



OUR PEOPLE MAKE THE DIFFERENCE

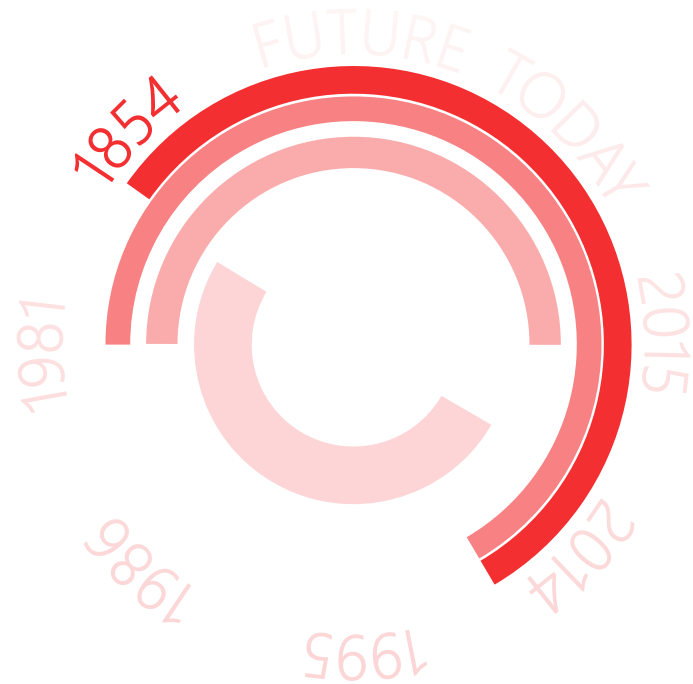
Managing Equipment Lifecycle Costs Liebherr



KATOEN NATIE

17/05/2021

INTRODUCTION KATOEN NATIE



Supply Chain
Engineering

Pl
Eng



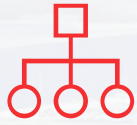
Injecting applied engineering
into logistics

ment
ain services
d quality

eral
o an
Art



FACTS & FIGURES



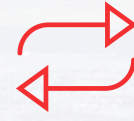
Structure

Privately owned
company



Headquarters

Antwerp, Belgium



Turnover

€ 2.2 billion



Employees

17.500



Countries

35



Logistics platforms

>160



Covered warehouse capacity

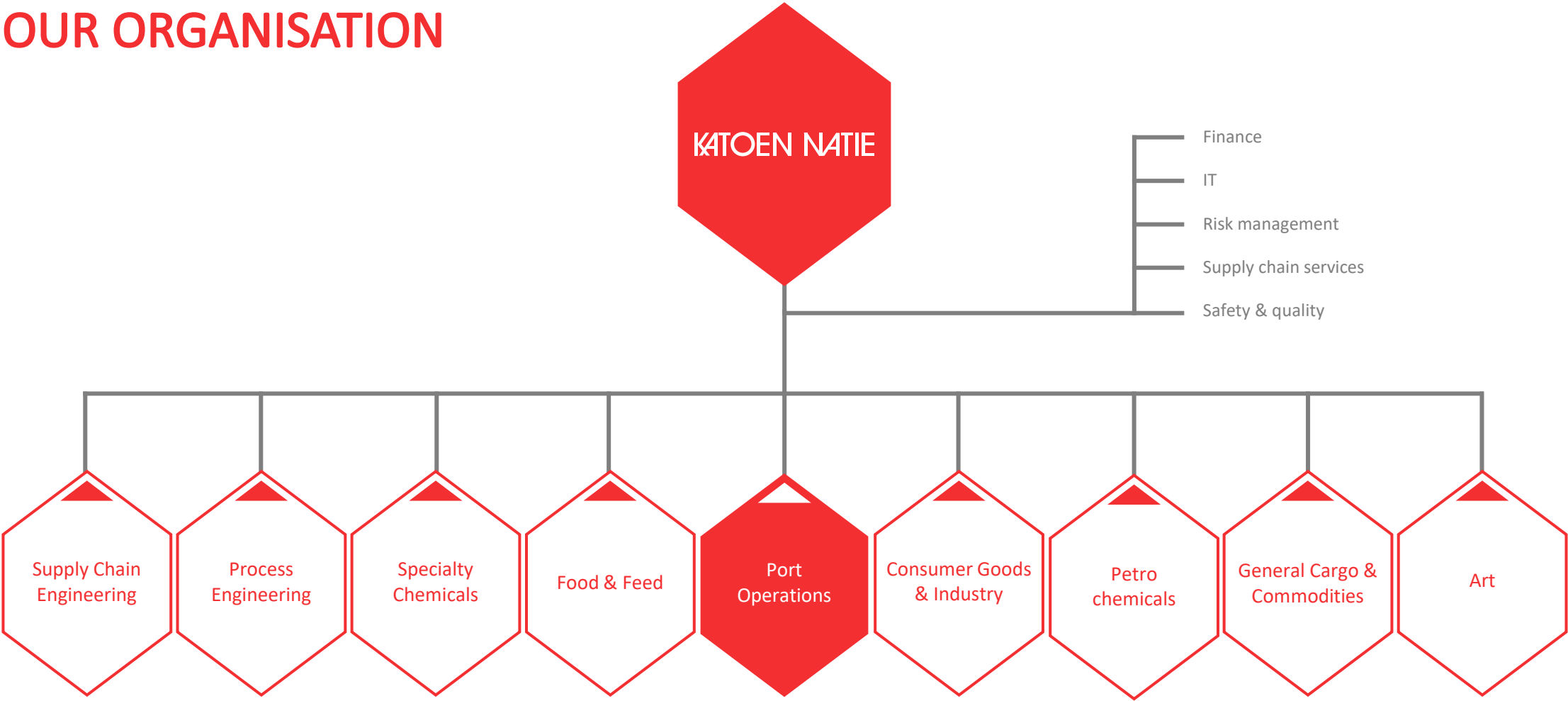
> 5.000.000 m²



Number of silos

> 3.300

OUR ORGANISATION



BUSINESS UNIT PORT OPERATIONS



**Stevedoring &
supporting services**



**+3 000 000 ton
General Cargo**



+600 000 TEU

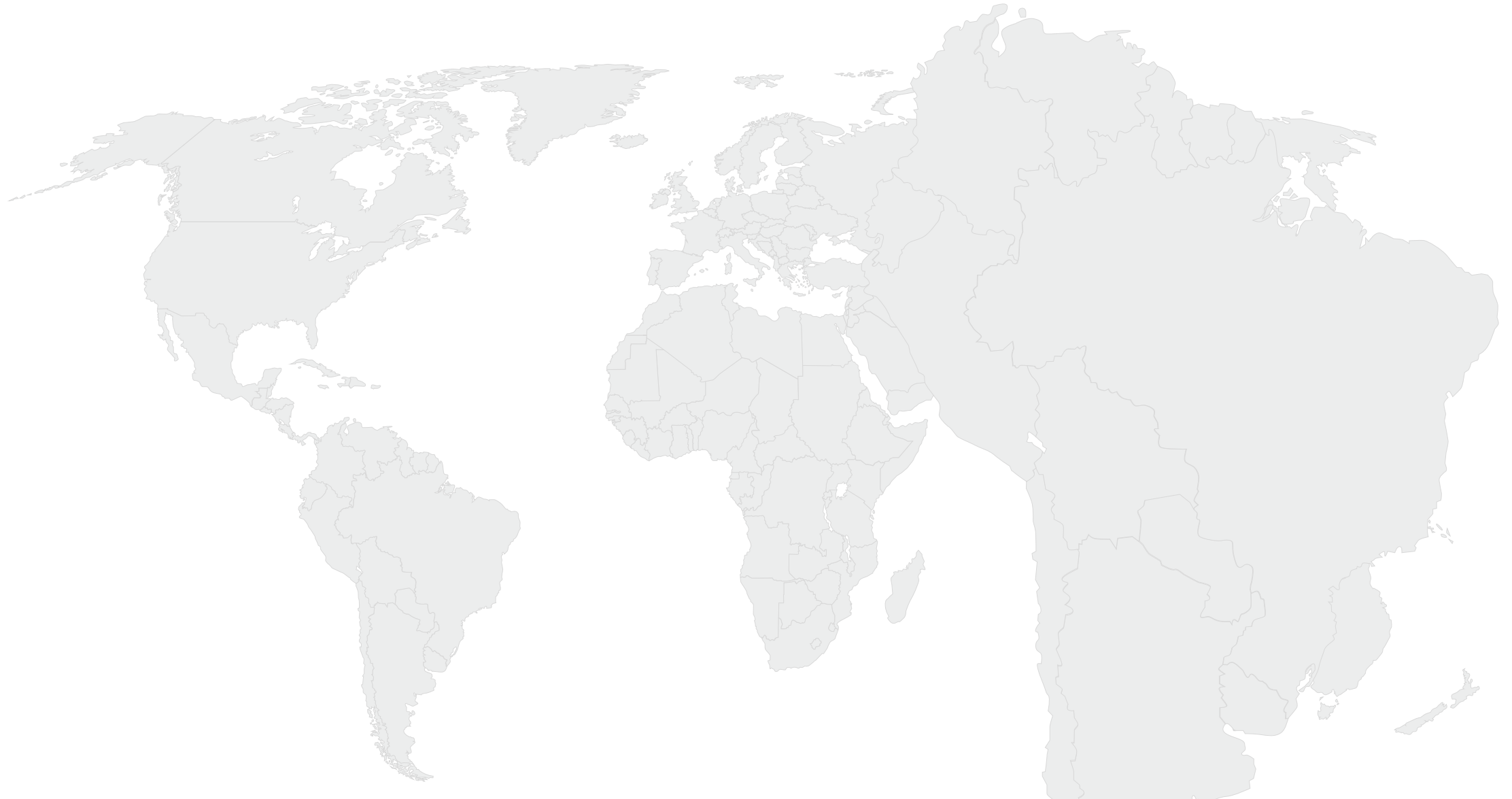


650 FTE



UY, BE, NL, FR





SOUTH AMERICA



TERMINAL CUENCA DEL PLATA

- 638 mtrs Quay length
- > 14m depth
- 33,5ha CY
- 810.000 moves/year
- 2.500 reefer plugs
- 4 super post panamax cranes and 3 post panamax cranes
- 34 Straddle carrier ; 7 empty stackers ; 2 reach stacker ; 2 forklifts >16ton ; 15 forklifts >5ton
- over 500 employees



EUROPE



ROUEN - RADICATEL

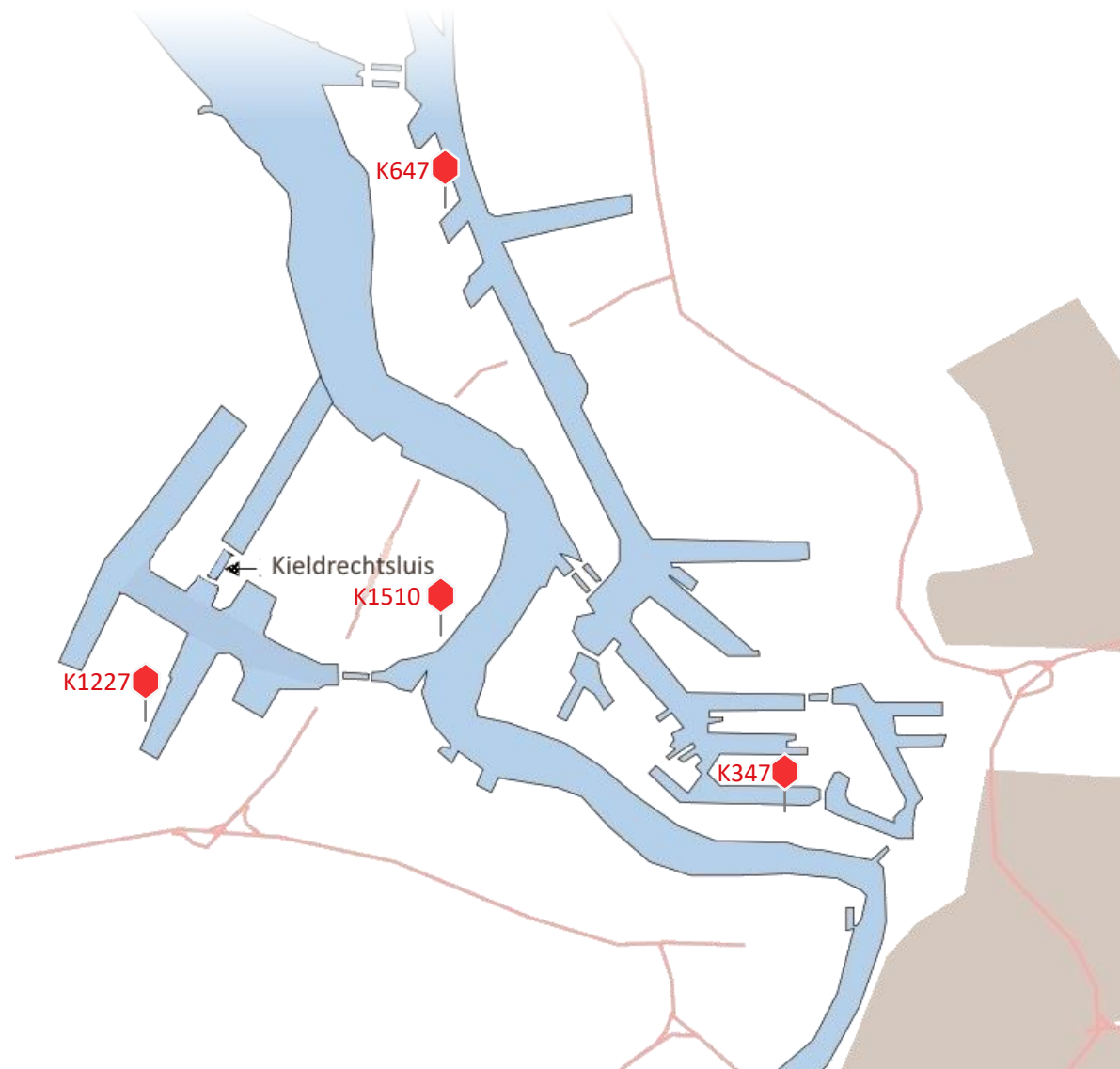
- 415 meters quay length ; 11m depth
- 2 mobile cranes Liebherr; 124t and 65t, 1 LHM 420 and 1 LHM 250
- 14 ha total surface , of which 3.700 m2 warehouses
- Container import
- Reachstackers; Forklift trucks(2.5-18t); Tugmasters/tow tractors; wheel excavators
- Small steel distribution from quay



ZEALAND CONTAINER TERMINAL

- Dedicated Container export HUB terminal
- 2 Hyster reachstackers
- 7 Terberg Machines
- Container Gantry Crane: Kranbau Eberswald Crane: 45tX18/40/18m
- 150,5 meters quay length
- 16ha total surface CY

ANTWERP, BELGIUM





LEFT BANK DEEP-SEA TERMINAL K1227

- 1 300 meters quay length
- 2 ship-to-shore gantry cranes & 4 mobile harbor cranes max 208mts capacity, 1 LHM 550 and 2 LHM 600 with pactronic
- 117 ha total surface
- 350.000 sqm covered
- Import steel distribution center
- Container import



RIGHT BANK DEEP-SEA TERMINAL K347 / ABES

- 1.800 meters quay length
- 4 mobile harbor cranes max 208mts capacity, amongst other 1 LHM 550 and 2 LHM 600 with pacronic
- 19 ha total surface
- 55.000 sqm covered
- Export hub for general & project cargo

BARGE TERMINAL K1510

- 350 meters quay length
- Mobile harbor crane max 64mts capacity with containerspreader
- Specialized in container barge handling
- Fumigation area



ON-SITE TERMINAL K647 / INOVYN

- 325 meters of operational quay length
- Depth 10 meters
- Dry bulk on customers ground storage 20 Kmts
- Katoen Natie Inhouse engeneering department has designed and built silo installation.
- 1 electric hydraulic crane, grab capacity 300 mt/h and 1 mobile harbor crane, grab capacity of 400 mt/h

MANAGING EQUIPEMENT LIFECYCLE COSTS LIEBHERR

- Katoen Natie has chosen for full service contracts in order to work pro active by weekly maintenance.
- Defects, eventually damages are detected rapidly and repaired.
- Meetings are organized on a regular base to discuss the finding of these maintenances
- Smart app mainly used for technical support between Katoen Natie garage department and Liebherr enables direct and short ways of communication
- Automatic positioning of the cranes toward vessels keep traffic on the quay effective



KATOEN NATIE