

PORT MANAGEMENT INFORMATION SYSTEM - PMIS

PMIS is an electronic platform that connects the multiple systems operated by a variety of organizations that make up a seaport community. It is shared in the sense that it is set up, organized and used by firms in the same sector.



Benefits?

Reduce paper (up to 90 %)

Speed Up processes (up to 20 %)

Increased data accuracy (up to 99.9%) for the exact cargo quantity and location within the terminal.

Total control of freight flows

Increased speed of freight turnover (up to 20%)

Optimized use of the terminal's operation areas (up to 25 %)

Improved service for freight owners by providing them with accurate cargo information including its current location.

Decrease operating costs

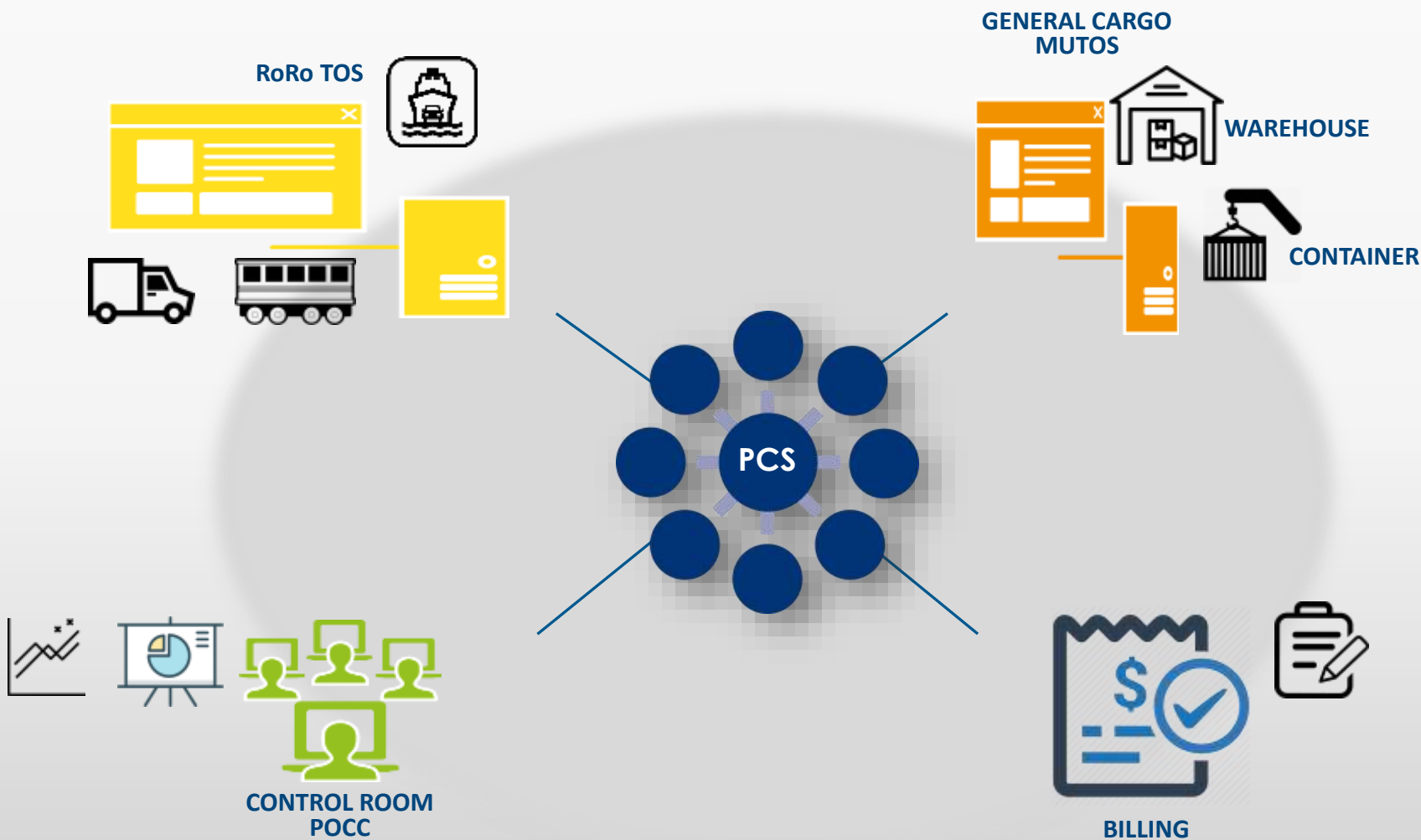
Increased speed and efficiency of data exchange between all freight processing parties at the terminal.

Guaranteed real-time access to operational information.

The goals of PMIS

- Develop and Implement standards and protocols for processes and messages with the port community.
- Systematically capture the relevant information from stakeholders. Avoiding the requirement to re-enter data limits errors and processing costs.
- Centralize and standardize community information.
- Provide transparency and real-time, or near real time, information to facilitate tracking and tracing of goods, and optimize transit times.

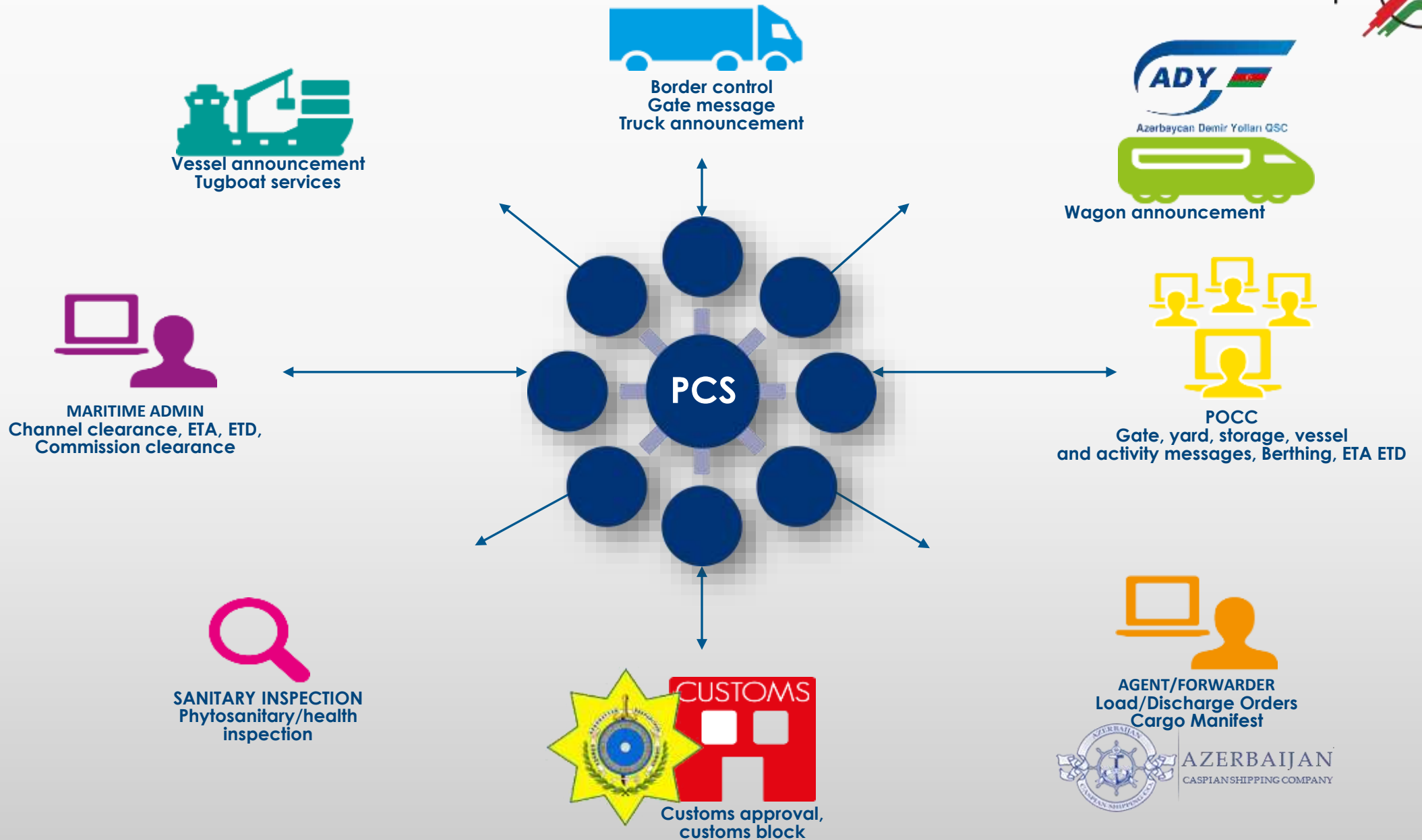
A comprehensive web-based solution comprising various modules



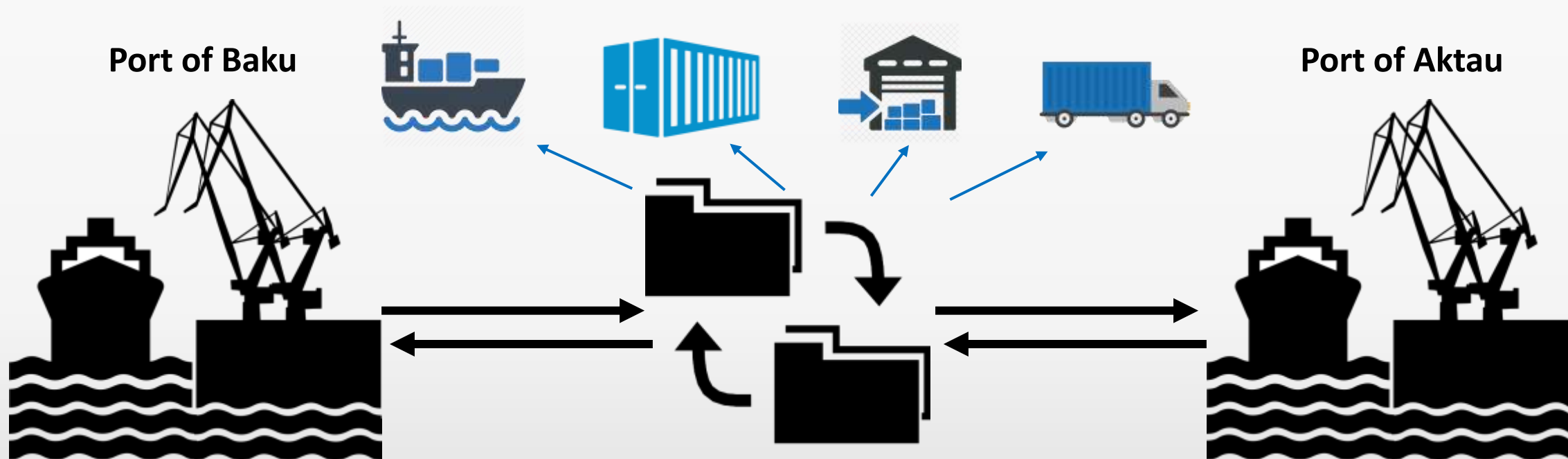
Modules:

- **PCS**
Port Community System
- **RoRo TOS**
- Terminal Operating System for RoRo
(Trucks and Rail Wagons)
- **General Cargo TOS - MUTOS**
Terminal Operating System for Multiuser Terminal with
 - ✓ **WAREHOUSE** Management System
- **General Cargo- CUBE**
 - ✓ **CONTAINER** Management
 - ✓ **CONTAINER YARD**
- **BILL**
Billing Module
- **CONTROL ROOM POCC**
Port operational Control room

PCS CONNECTS PMIS WITH THE COMMUNITY



Integration



Type of Electronic Data to be Exchanged

- Vessel Announcements
- Containerized Cargo Announcements
- General Cargo Announcements (Breakbulk and Dry Cargo)
- RoRo Cargo Announcements (RoRo Vehicles and Railway Wagons)