



GRIMALDI GROUP

*Transports Event, 22th October 2020*

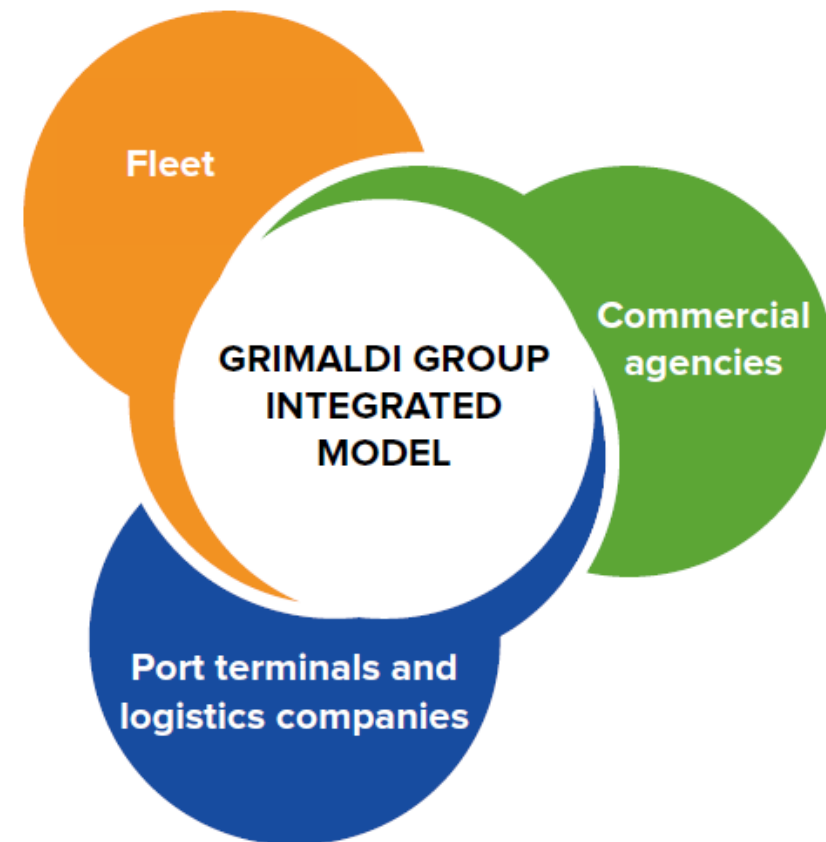


**GRIMALDI GROUP**



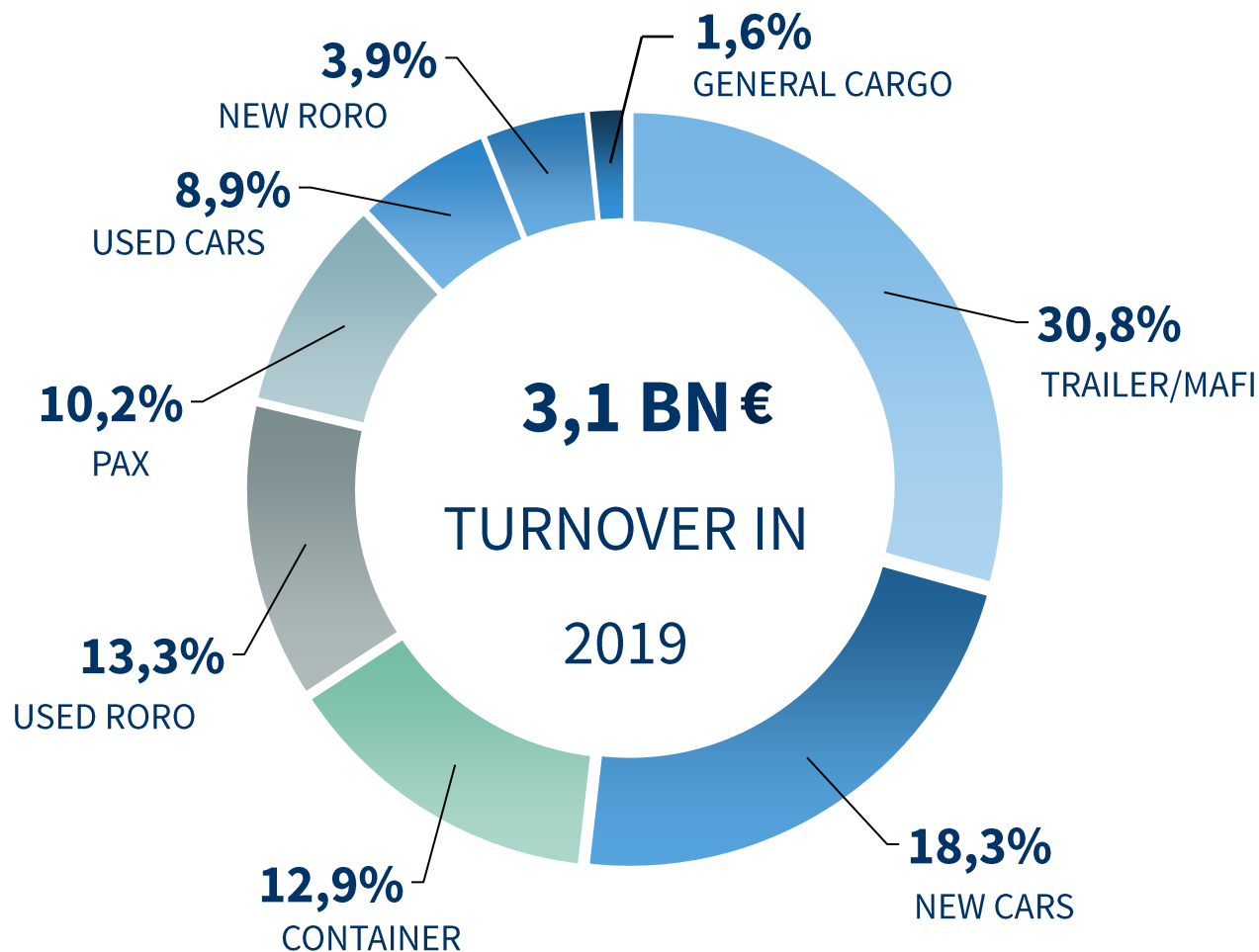
## THE GRIMALDI GROUP

- » The **Grimaldi Group** began its shipping activity in the late 40's operating through the years in different sectors: passengers, bulks, general cargo, tanker, containers, cars and ro/ro.
- » After developing in the 60's its maritime services in the Mediterranean, the Group **expanded into other areas of the world** and further developed the ro/ro concept with increasingly sophisticated and flexible ro/ro multipurpose vessels
- » The Group is today a **perfectly integrated polycentric multinational business**, which invests to keep its fleet modern and develop port terminals, mainly using owned ships, to transport freight and passengers
- » **Environmental sustainability** is coming an increasingly concrete and crucial concept in operating activity and corporate strategy for Grimaldi Group, with important investments in the **modernization of its fleet**, technologically at the leading edge and eco-friendly





## GRIMALDI: THE FIRST RO-PAX COMPANY IN THE WORLD



**130** VESSELS  
**118** OWNED UNITS



**5 BLN €** INVESTMENT PROGRAM ON FLEET NEW BUILDINGS BETWEEN 2010 AND 2020



**32** OWNED COMMERCIAL AGENCIES,  
**90** OFFICES WORLDWIDE



**140** PORTS IN **50** COUNTRIES,  
**125** MOTORWAYS OF THE SEA NETWORK



**16.000** EMPLOYEES



# 125 MOTORWAYS OF THE SEA AND MARITIME LINKS



## TIRRENICA

Genova-Salerno (4x)

## ADRIATICA

Ravenna-Brindisi (6x)

Venice-Bari (6x)

## SICILY

### Palermo

Genova (8x)

Livorno (8x)

Salerno (7x)

### Catania

Genova (daily)

Livorno (6x)

Salerno (daily)

Malta (8x)

Ravenna (6x)

Brindisi (6x)

## SARDINIA

### Cagliari

Genova (6x)

Livorno (6x)

Sagunto (6x)

Civitavecchia (6x)

Olbia (3x)

Salerno (6x)

### Olbia

Livorno (24x)

(40x peak season)

Civitavecchia (20x)

Cagliari (3x)

### Porto Torres

Civitavecchia (4x)

(10x peak season)

Barcelona (4x)

(10x peak season)

Genova (6x)

Cagliari (2x)

## GREECE

### Igoumenitsa/Patras

Venice (10x)

Ravenna (6x)

Ancona (daily)

Bari (6x)

Brindisi (22x)

Genova (2x)

Savona (2x)

Livorno (2x)

Catania (8x)

## TUNISIA

### Tunis

Civitavecchia (2x)

Salerno (4x)

Palermo (4x)

Genova (4x)

Livorno (4x)

## SPAIN

### Barcelona

Savona (daily)

Livorno (8x)

Civitavecchia (daily)

Porto Torres (4x)

(10x peak season)

### Sagunto

Salerno (6x)

Cagliari (6x)

Civitavecchia (6x)

### Valencia

Livorno (daily)

Savona (daily)

## MOROCCO

### Tangier

Barcelona (2x)

Savona (2x)



## GRIMALDI GROUP IN SPAIN

The **Group** started its activity in **Spain** in the 1990s, and today it operates with a **worldwide network of connections**:



- From **Barcelona** and **Valencia/Sagunto** to:
  - » **Italy** and **Morocco** → SHORT SEA SHIPPING
  - » **Mediterranean Sea** → EURO MED / EURO AEGEAN
  - » **West Africa** → WAF
  - » **North America** and **México**
  - » **South America** → SAM

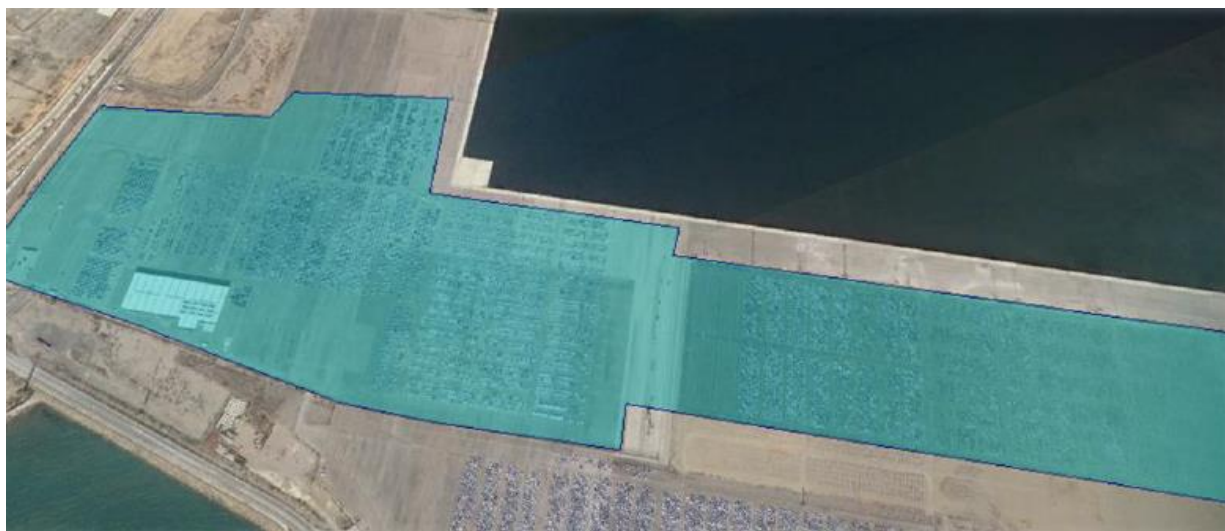
- From **Bilbao** and **Vigo** to:
  - » **North Europe y Baltic Sea** → FINNLINES
  - » **West Africa** → WAF
  - » **South America** → SAM



## VALENCIA TERMINAL EUROPA: VALENCIA & SAGUNTO TERMINALS



- ✓ **Valencia Terminal – total area:** 210.000 m<sup>2</sup>
- ✓ **Mooring Line:** 1.300 m
- ✓ **Train:** 3 tracks to operate simultaneously up to 2 trains of 700 meters
- ✓ **PDI:** 800 m<sup>2</sup> with a daily production capacity of 100 vehicles
- ✓ **Silos:** 160.000 m<sup>2</sup>

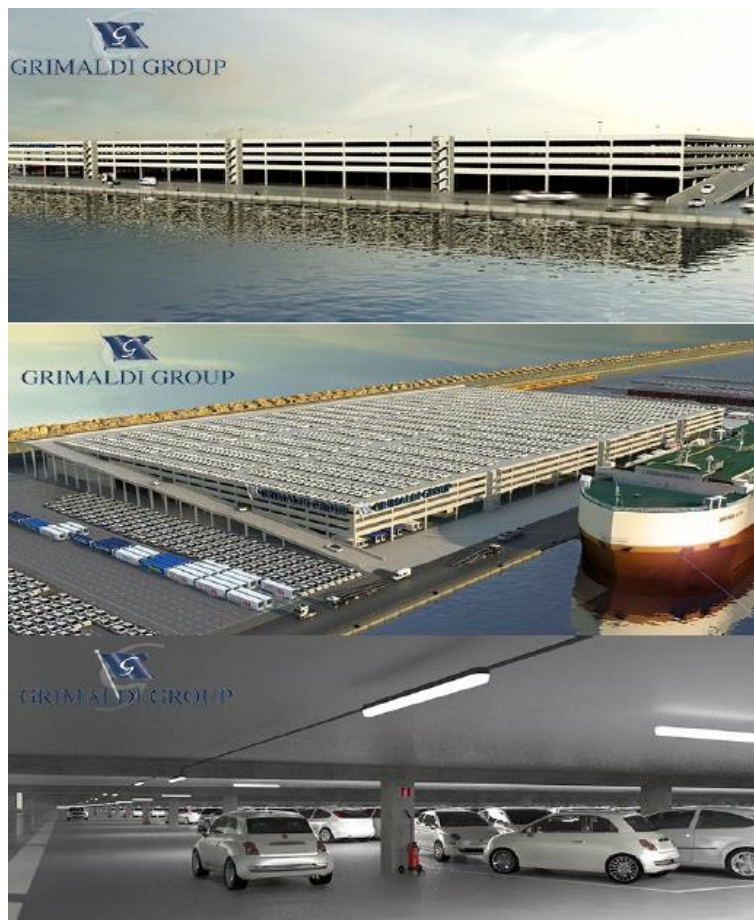


- ✓ **Sagunto Terminal – total area:** 314.000 m<sup>2</sup>
- ✓ **Mooring Line :** 1.200 m
- ✓ **Vehicle spaces :** 14.160 units.
- ✓ **PDI:** 2.500 m<sup>2</sup>
- ✓ **Offices:** 3000 m<sup>2</sup>



## THE GROUP'S INVESTMENTS – INFRASTRUCTURE

### *Valencia Terminal Europa*



- **22 MLN € investment in a Silos for new cars**
- **Total area: 202.587 m<sup>2</sup>**
- **Total capacity: 10.426 vehicles**
- **Floor: 256 x 156 m (or 39.963 m<sup>2</sup>)**
- **Ground floor + 3 floors + open air floor**
- **2 side ramps of 160 meters long**
- **PDI: 3.700 m<sup>2</sup>**
- **Extension of the concession for 20 years more**



## THE GROUP'S INVESTMENTS

### *Grimaldi Green 5th Generation*

- » **800 mln \$** investment on **12 vessels** class: “**Grimaldi Green 5th generation**”
- » **+100% capacity:** 520 trailers
- » **RoRo hybrid:** **Ø emissions of CO2** during stays in ports thanks to a 5,5 MWh lithium batteries plant which recharges during navigation using shaft generators and 600 m2 solar panels
- » **Peak Shaving:** **keeps the load on the thermal engine constant** (maximum efficiency) reducing all the transients that cause extra consumption and emissions.
- » **Air Lubrification System:** Innovation capable of **reducing the friction of the hull**, through a flow of small air bubbles under the “flat bottom” by means of specific blowers controlled with VFDs (Variable Frequency Drives). The flow of small bubbles under the hull is capable of **educing its resistance to friction**”.
- » **Silicon Painting:** The hull is treated with a cycle of **non-toxic silicon paint** of the latest generation based on the concept of **free surface energy**
- » **Open Loop Scrubbers with wash water system:** In order to comply with regulatory requirements which, as of 2015, establish **Sulphur emission limits** of less than 0.10% for ships operating in the ECA areas, the Group has invested in the installation of "scrubber" systems.







GRIMALDI LINES



**KNUD E. HANSEN**

SHIP DESIGN SINCE 1937



GRIMALDI GROUP

# Thank you

