



Sustainable Port Development

A Contractor's perspective

Koen Hutsebaut / 28 April 2021



Jan De Nul
GROUP

Jan De Nul Group's Expertise.



Marine Works.

Concept realisation, design, expansion and maintenance of ports, rivers and coastlines.



Offshore Energy.

Full balance of plant, design, installation and cable connections of all aspects of offshore energy projects.



Civil Constructions.

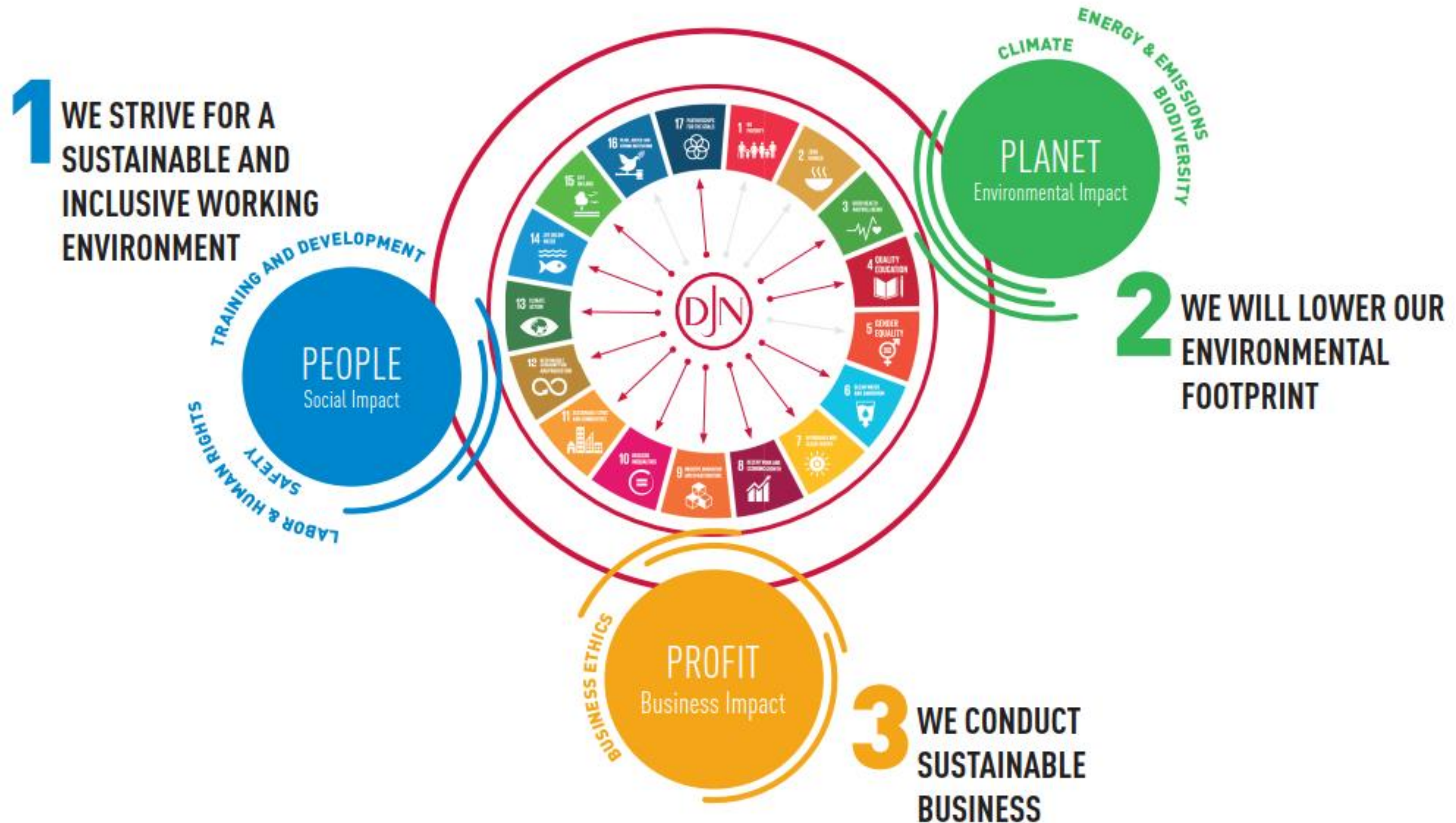
Design and construction of onshore infrastructure, buildings and foundations.



Environmental Solutions.

The answer to environmental issues. Reconversion of sites and maximal valorisation and re-use of sediments.

Sustainability – an intrinsic part of Jan De Nul Group's DNA.



Marine Works.

Dredging

- 30** Trailing Suction Hopper Dredgers
- 13** Cutter Suction Dredgers
- 6** Backhoe Dredgers
- 17** Split Hopper Barges
- 3** Water Injection Dredgers

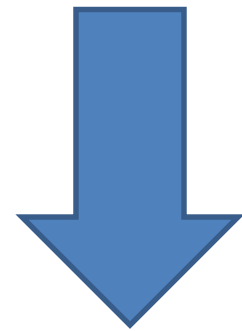


Sustainability in Port Construction East Africa & Indian Ocean

- 
- An aerial photograph of a large-scale port construction project. A long, straight concrete pier extends from the bottom center towards the middle of the frame. To the left of the pier, a large ship is docked. To the right, another large ship is docked, and a curved breakwater with orange and white buoys is visible. In the background, a busy port area with various ships, cranes, and storage containers is visible under a clear sky.
1. Legal / Client / Project / Contract Requirements
 2. Contractor's own sustainability drive
 3. Incentives towards contractor's sustainability

1. Legal / Client / Project / Contract Requirements

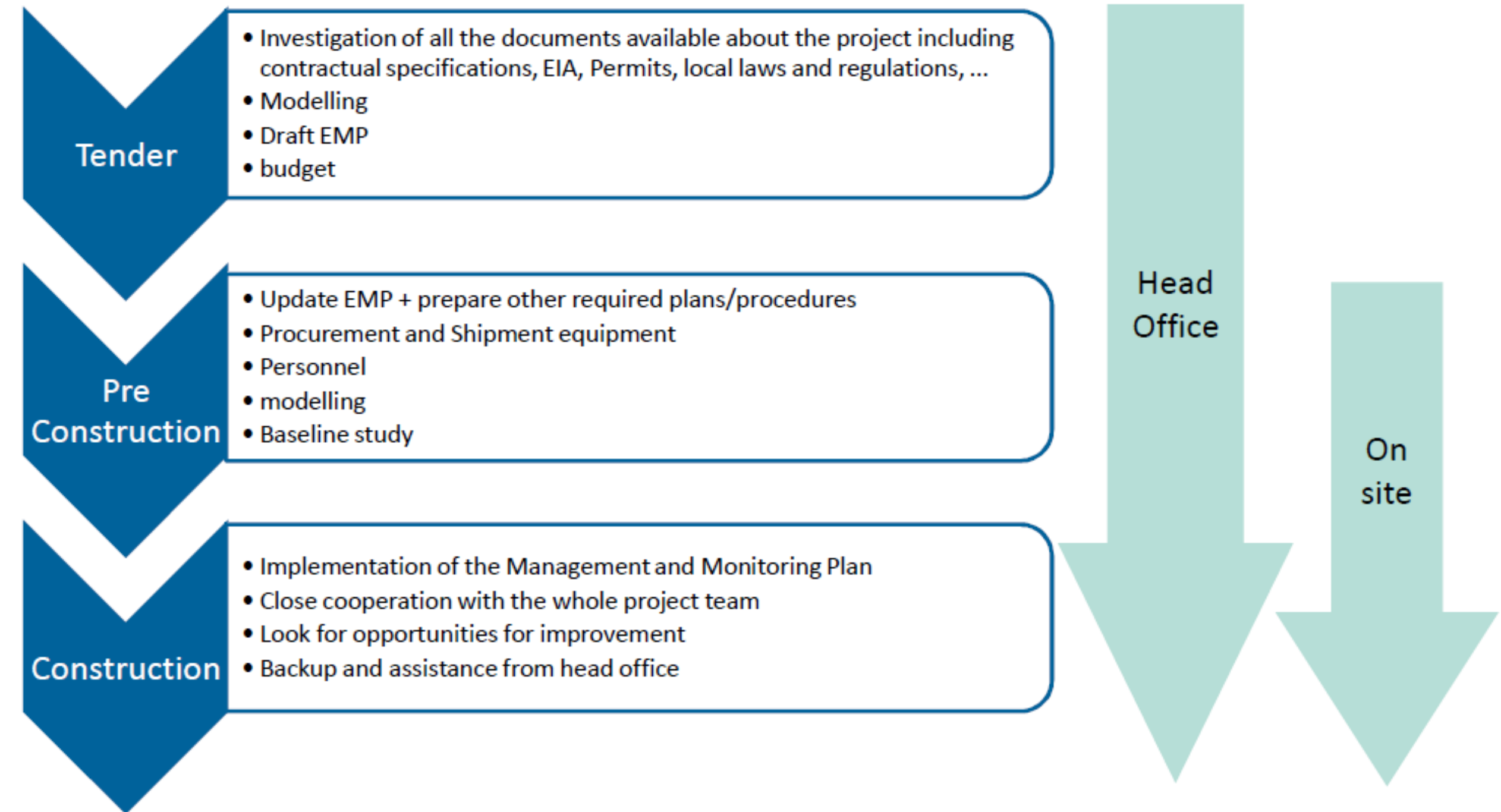
Marine Environmental Management



- Protect habitats like sea grass, coral reefs, mangrove forests, marsh lands,
- Protect marine and terrestrial fauna
- Protect people living and working around a project and their revenues



Project Specific Approach by Contractor



Every Project is different - Balance between Economy and Ecology

In-House Tools & Methods for Environmental Management

Parameters: Water Quality, Sedimentation (quality), Oceanographic, meteorologic

In-House Marine Environmental Department

Management Plans

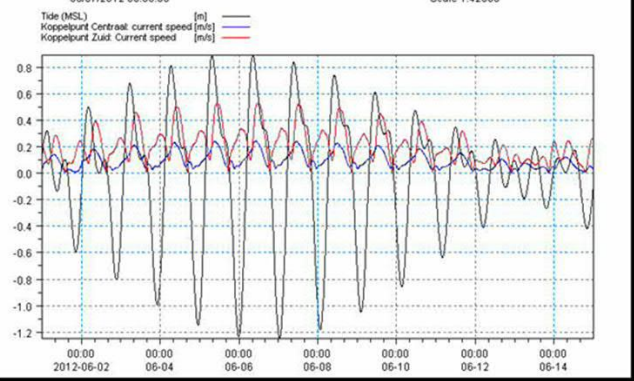
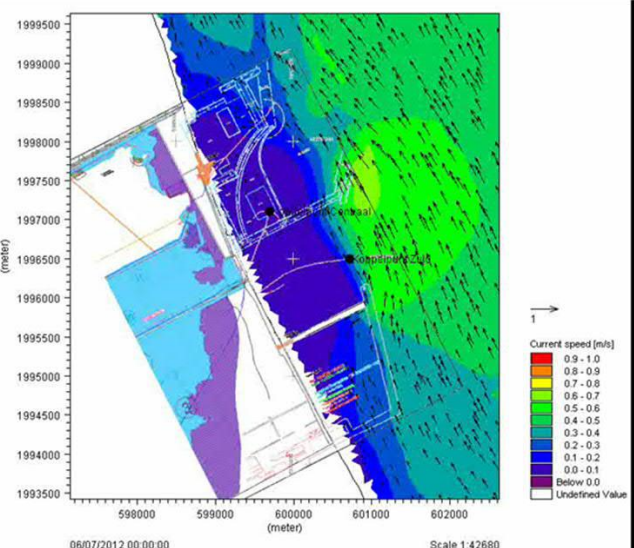
Environmental, Turbidity,
Method statements silt curtain

Modelling (since 2006)

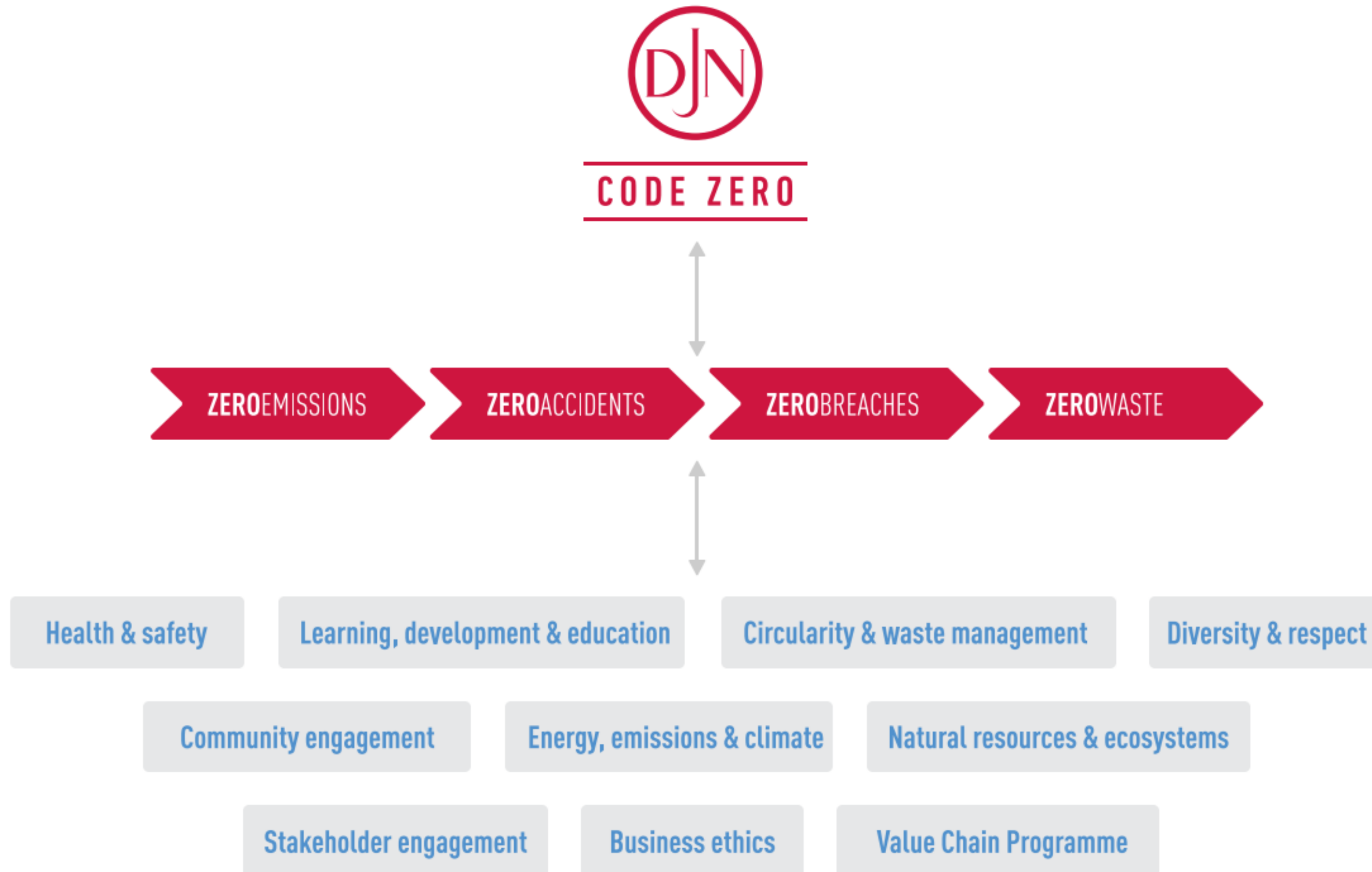
hydrodynamic, turbidity Plume,
sand and mud transport, spectral wave

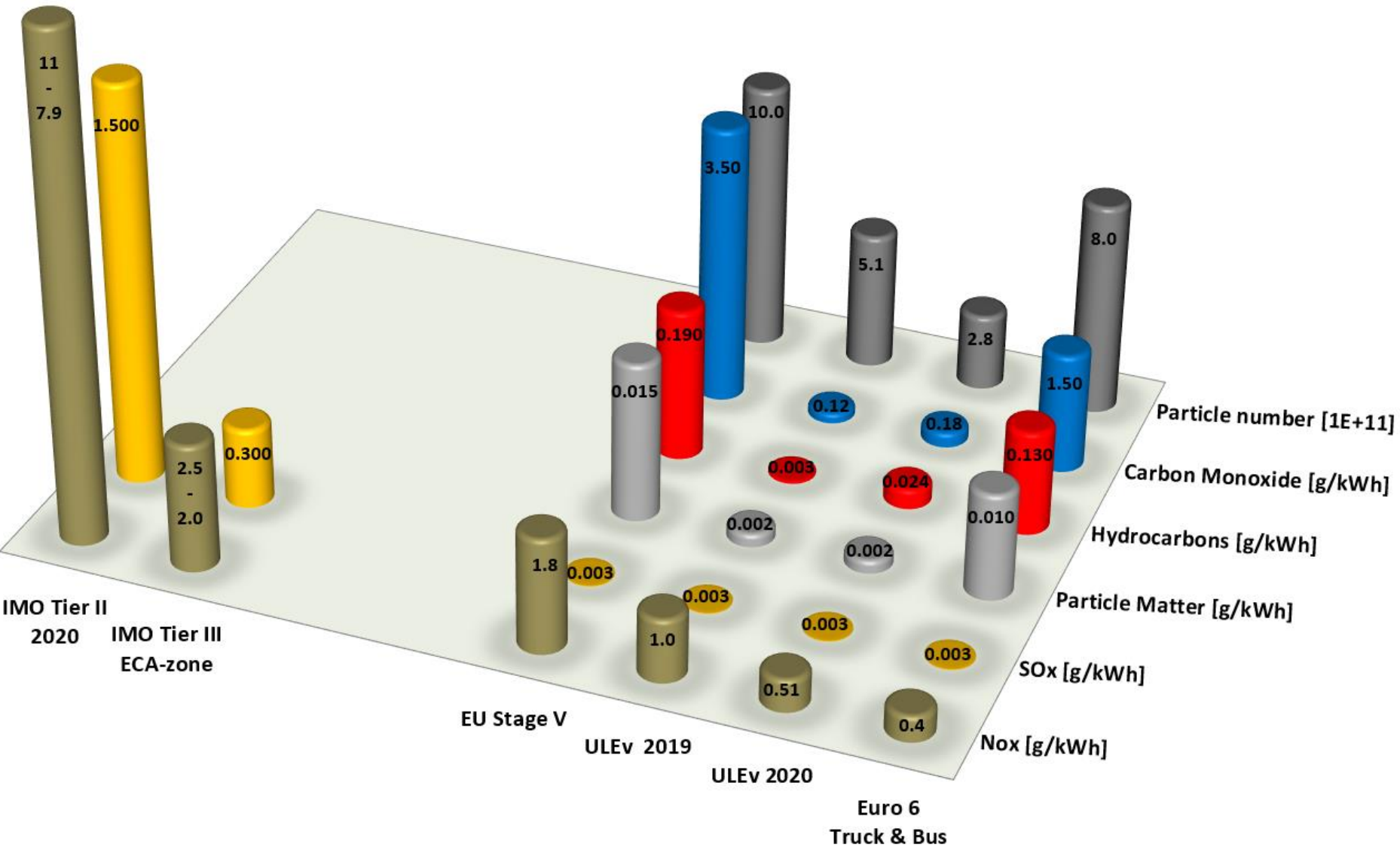
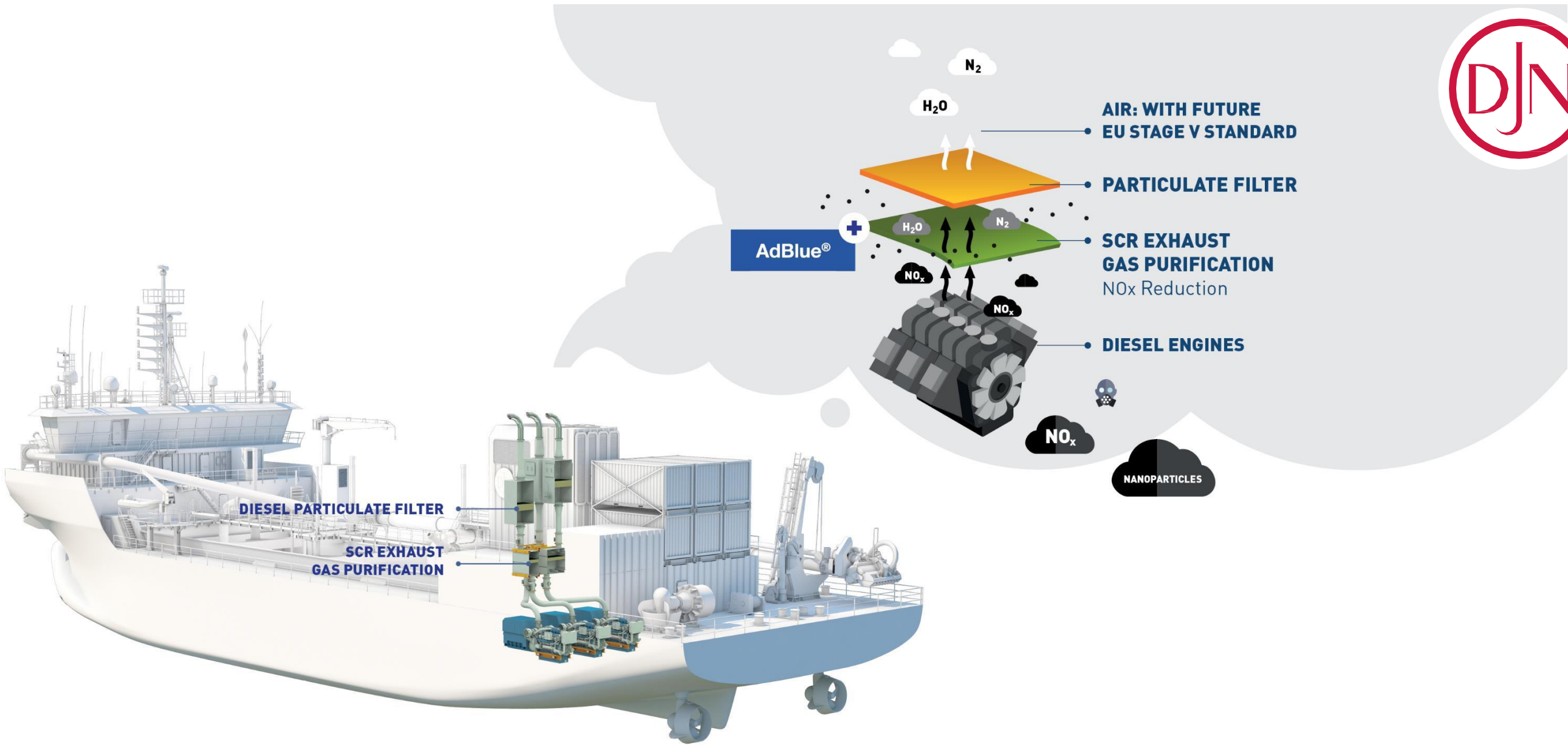
Monitoring

water quality (turbidity), hydrodynamic
parameters, sediment quality, marine
fauna observations



2. Contractor's own sustainability drive





3. Incentives towards contractor's sustainability



Circular Solutions.

Aiming for maximum re-use of raw materials is the answer to environmental issues.



Nature Based Solutions.

Building with materials nature provides us. Solutions where ecology meets engineering.



Protecting biodiversity.

In-house Marine Environmental Department protecting biodiversity and ecosystems.

**Price not the only determining factor
Include sustainability points during tender scoring system**



**Taking
responsibility for
generations to
come.**



www.jandenul.com | ita.jandenul.com

