

# MMC Corporation Berhad

## Port Sustainability Initiatives

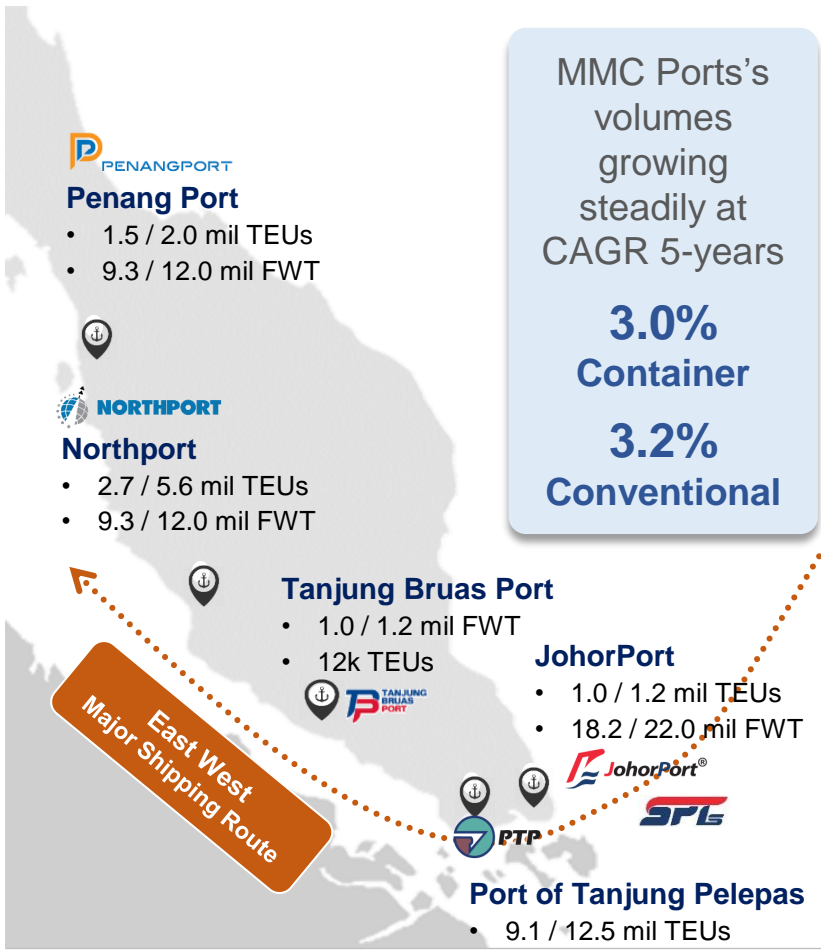
IAPH World Ports  
Sustainability Programme

29 Sept 2020



# MMC CORPORATION BERHAD: MMC PORTS

The largest port operator in Malaysia



MMC Ports's volumes growing steadily at CAGR 5-years

**3.0% Container**  
**3.2% Conventional**

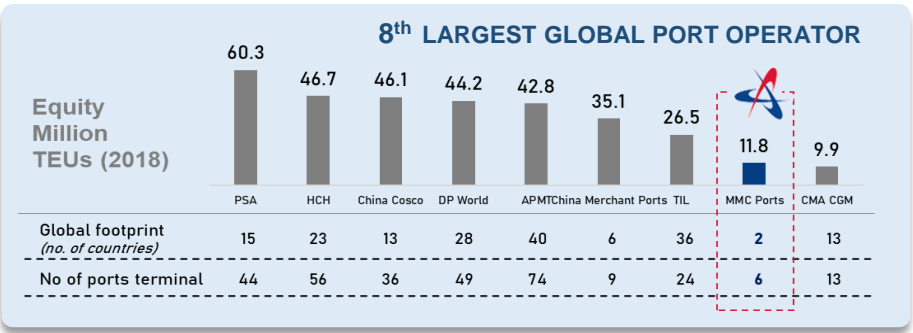
## 2019 Achievements

**21.3\* million TEUs** of container handling capacity

**14.3\* million TEUs** of container throughput (*Malaysia: 54% market share*)

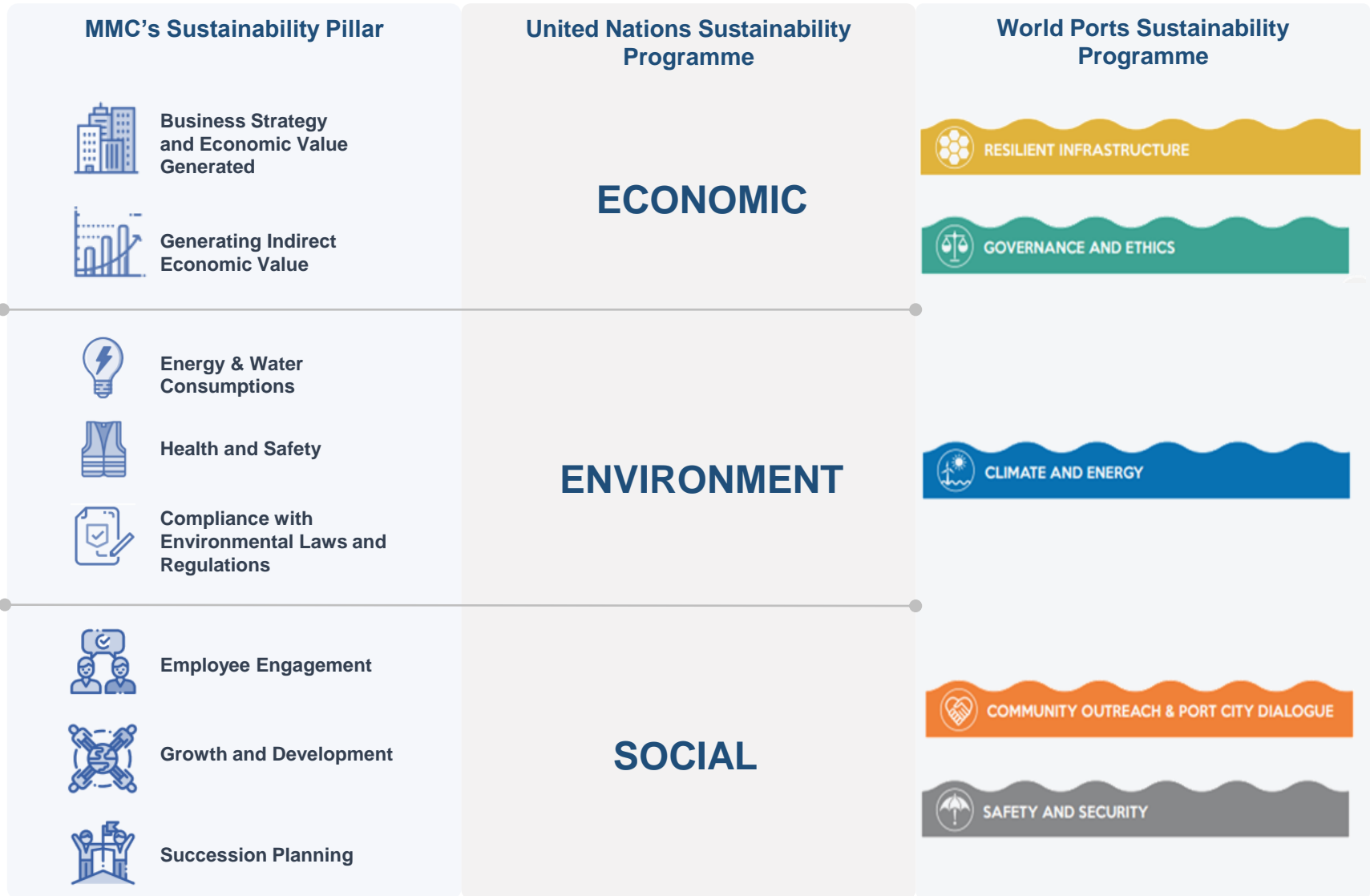
**37.8 million FWT** of conventional throughput (*Malaysia: 25% market share*)

\* Malaysia container capacity and handling – excluding RSGT



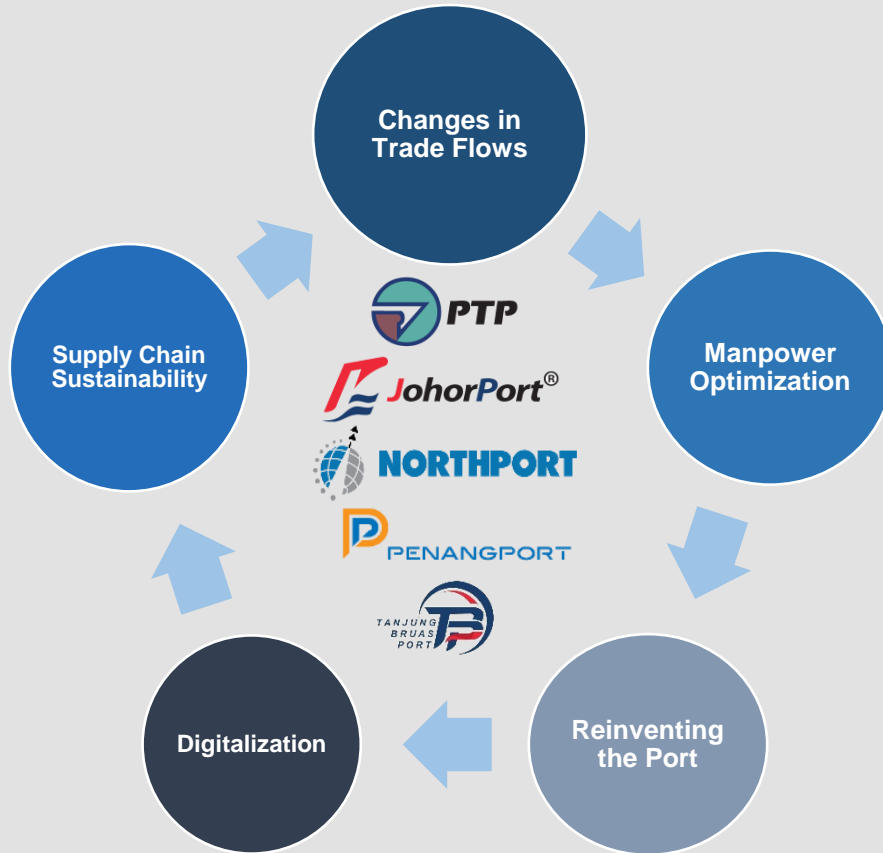
# SUSTAINABILITY PROGRAMME

Our commitment in creating sustainable ports - MMC's core business



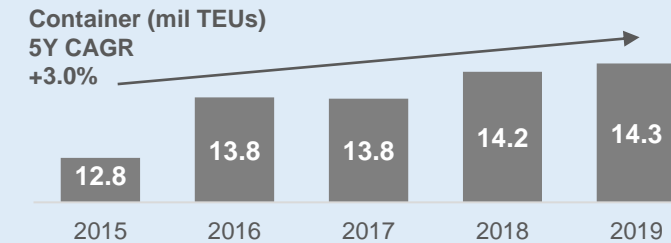
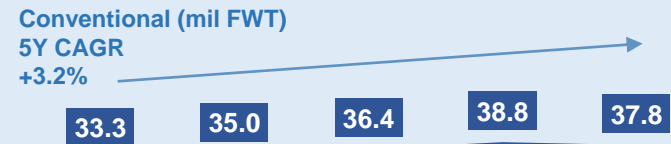
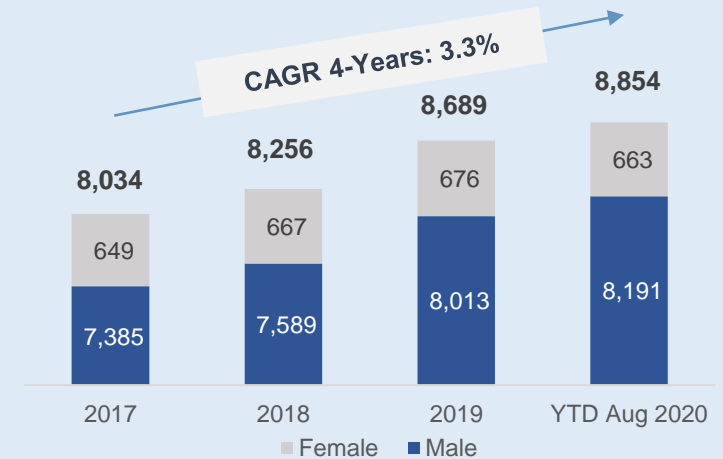
# SUSTAINABILITY : ECONOMIC PILLAR

Growing our business, at the same time creating job opportunities



MMC Group and DRB-HICOM Berhad collaborated with MACC to combat bribery and corruption at a pledging and signing ceremony on Aug 2019

## Volume, Workforce & Diversity Growth



## De-carbonisation



- **PTP:** Using Electrified-Rubber Tyred Gantry (“E-RTG”)
- **JPB:** RTGs shutdown initiatives to minimize deployment
- **PPSB:** Replacement of conventional RTGs with new Hybrid RTGs

**51,800 Tons of CO2**  
savings in 2019

## Waste Management



- **PTP:** Expansion and modernization of the sewerage treatment plant
- **NMB:** 1<sup>st</sup> Malaysian Port to implement an Integrated Port Reception Facility (PRF)



## Green Port Status

- **Johor Port Authority Green Port Policy** (2014 – 2020)
- Seawater sampling, heavy metals sediments, hydrocarbons and marine biologics

## Energy Efficiency

- **All ports:** Started using biodiesel B7 for all the equipment
- **JPB, NMB & PPSB:** Replacement of High-Pressure Sodium Vapor (HSPV) to LED lightings

# SUSTAINABILITY : SOCIAL PILLAR

Focus on diversity, partnership and CSR for the society at large

## Diversity

- Increase in percentage of women employees, especially in non-traditional roles
- PTP is running a programme to have more female for frontline jobs



## Taking care of our employee

- PTP signed up with Malaysian social security (SOCSSO)
- Port centric Rehab programs to keep operators maximum time in the job (FitPort) – rest of ports are to follow



## Partnership

- University partnership across the ports, offering internship, visits etc.
- Signing up on MACC, group wide compliance programme





# Thank You

**MMC Corporation Berhad | Group Strategy**  
+603 2071 1122 | [investor@mmc.com.my](mailto:investor@mmc.com.my)