

PRIVILEGE
BECOMES
STANDARD

ONE
STOP
SHOP

GAME CHANGER IN PORT OPERATIONS AND MANAGEMENT

SC
INDUSTRIAL
PORT
OPERATOR



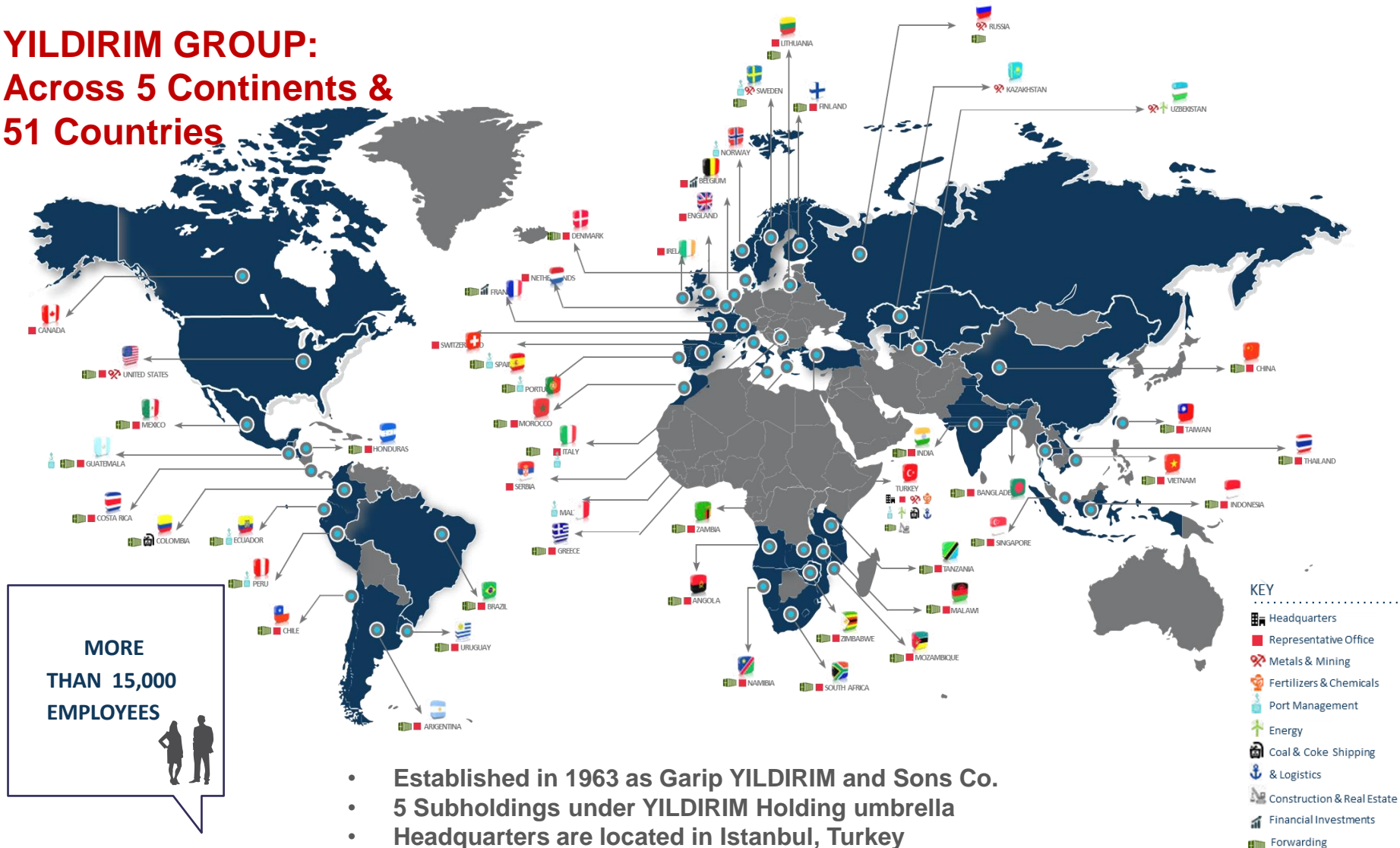
YILDIRIM GROUP

Overview



YILPORT HOLDING as subsidiary of **YILDIRIM GROUP** benefits of global well diversified industrial knowledge and experience

YILDIRIM GROUP: Across 5 Continents & 51 Countries



YILDIRIM is active in **9 industries** which open synergies and huge business development potentials

WORLD'S #2

HC FeCr Producer

WORLD'S #4

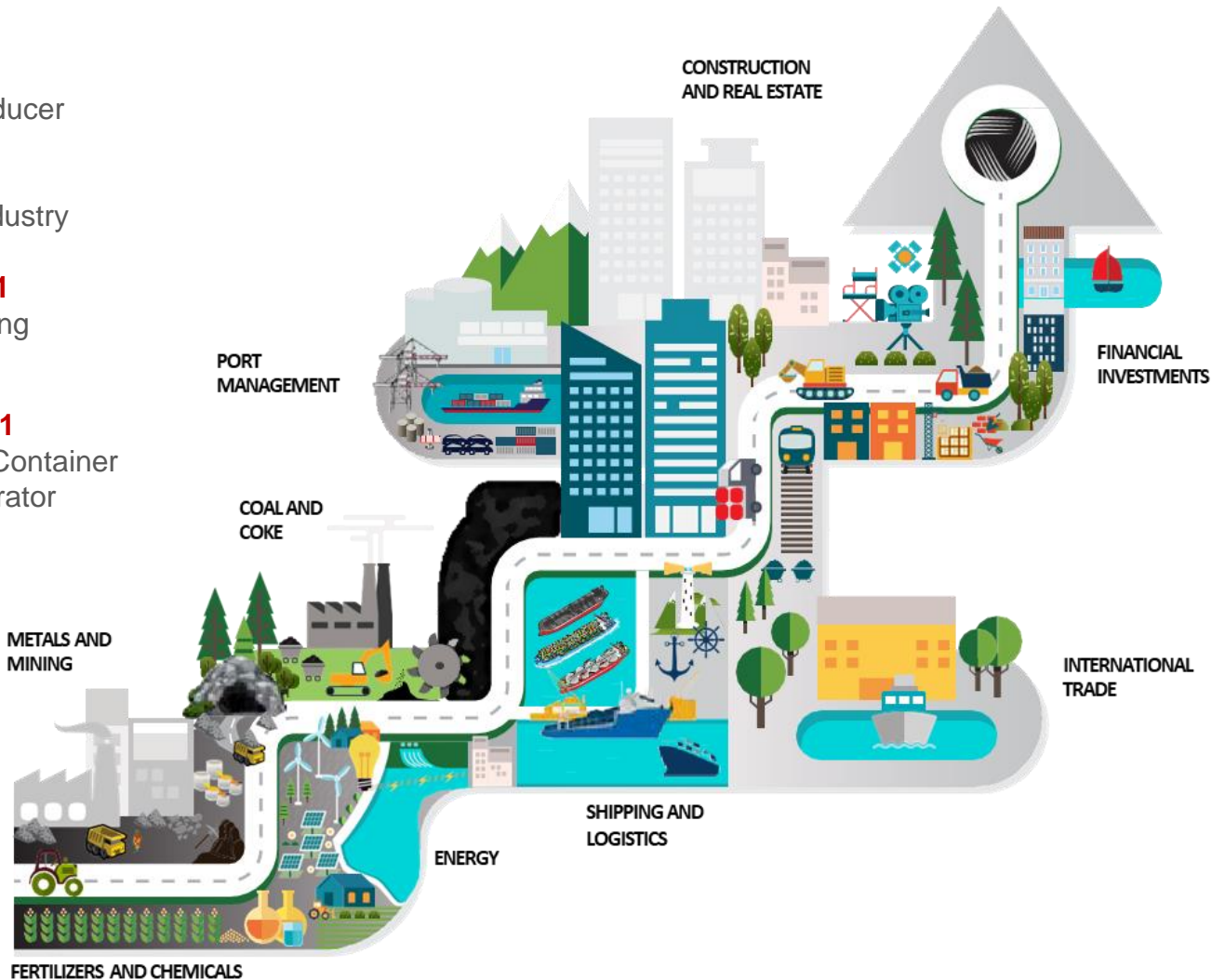
Chromium Industry

TURKEY'S #1

Metals & Mining
in Chromium

WORLD'S #11

International Container
Terminal Operator



TURKEY'S #1

Coal & Coke
Coke Importer

TURKEY'S #1

Fertilizers &
Chemicals
CAN &
Ammonia

YILDIRIM HOLDING

Industrial conglomerate with a growing global footprint

Overview

- YILDIRIM Holding is a vertically integrated Turkish industrial conglomerate headquartered in Istanbul, Turkey. The group's core industries are metals & mining, fertilizers & chemicals, and port management. Core industries are supplemented by operations in energy, coal & coke, logistics, shipping, industrial construction and real estate development. The group also has a diversified portfolio of financial investments.
- The group commenced its operations in 1963 in Samsun, and continues to be privately owned by the YILDIRIM Family.
- YILDIRIM Holding has operations in 51 countries on five continents, with ca. 15,000 employees.

Key people

- Ali Riza Yildirim, Chairman
- Robert Yuksel Yildirim, President & CEO

Key facts

Active industries

9

Total assets

USD 5.9bn

Global footprint

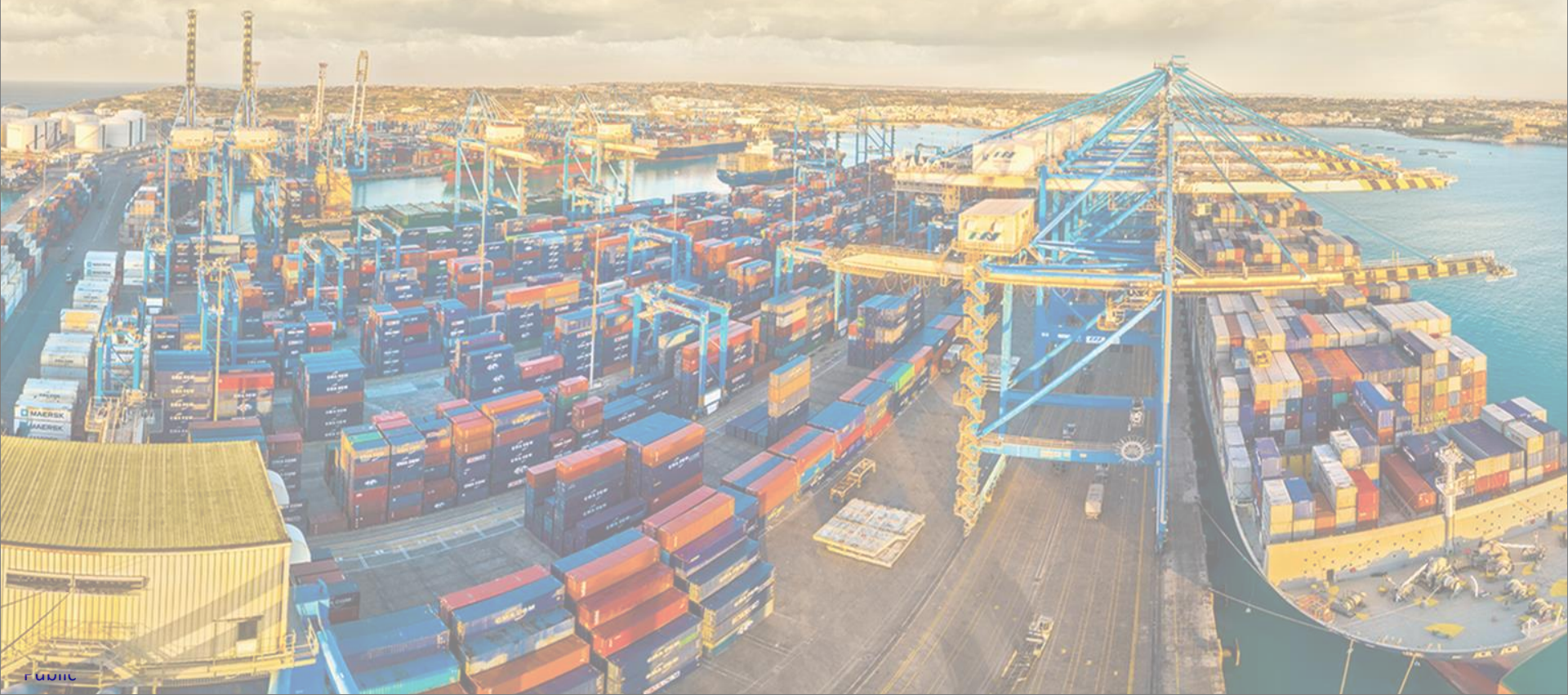
51 countries

Employees

ca. 15,000

	%20A Rev ⁴	Selected Subsidiaries	Description
Metals & Mining	26%	    	<ul style="list-style-type: none"> Engaged in the exploration, mining and processing of chrome ore and high carbon ferrochrome in 5 countries (Turkey, Kazakhstan, USA, Sweden, Russia). The group is planning to expand its global network to Africa and Latin America besides its current presence. #4 player in the global chromium industry.
Ports & Logistics	41%	  	<ul style="list-style-type: none"> International port and terminal operator with activities in 10 countries with 22 marine ports and 6 dry terminals - fastest growing player in the world. Ranked #11 globally in Drewry's Global Container Terminal Operators Report – #1 in Turkey Target is to be among the top global 10 players by 2025.
Fertilizers & Chemicals	15%	 	<ul style="list-style-type: none"> Largest producer and exporter of calcium ammonium nitrate (CAN) fertilizers and ammonia in Turkey. #3 trader of fertilizers and chemicals (CAN, AN, DAP, AS, NPK, Urea) in Turkey.
Financial Investments	18%	  	<ul style="list-style-type: none"> Established in the Netherlands in 2010, YILDIRIM Asset Management serves as an investment arm of the group with a flexible mandate. Investments include: CMA CGM (#4 container shipping company globally), Sealease (niche maritime company in Belgium), Seven Bridges (World's largest dedicated cloud-based genomics analysis platform).
Other		     	<ul style="list-style-type: none"> Coal&Coke: Largest coal importer in Turkey. Engaged in production of metallurgical coke in Colombia. Energy: 3 operational hydro-power plants (147.7 MW) and 2 greenfield power plant projects in Turkey. Shipping: Fleet of 11 dry bulk & general cargo vessels. Also manages 29 third-party owned vessels. Real Estate: Real estate developer with projects of an Ottoman-era tannery and a shoe factory in Istanbul. Others: ETI Beton (ready-mix concrete), ETIPET (Distributor of fuel oil, gas and diesel oil).

YILPORT Holding Overview



YILPORT HOLDING – Introduction

Who we are;

- YILPORT Holding is one of the **fastest growing global port operator** 100% owned by YILDIRIM Holding
- As of January 2021, we serve liners and customers at **22 port terminals** and **6 dry-terminals** across **10 countries** including Turkey, Portugal, Spain, Malta, Italy, Sweden, Norway, Ecuador, Peru and Guatemala
- We are a **multi-purpose port operator** with 10m TEUs of container, 22m tons of general cargo, 2.15m tons of liquid cargo, 1mm CEUs of Ro-Ro handling capacity per year
- As per Drewry league table, in 2021, YILPORT Holding has become the **11th largest international container terminal operator** globally

Our mission;

- We see massive opportunity in the port space through continued expansion of global trade
- Building a global ports platform leveraging on industry expertise
- We have gone from being a local player to one of the world's most promising international names
- Our mission is to be within the **top 10 global port operators by 2025** and to generate long-term sustainable growth and profitability
- Further develop our international presence and further diversify our portfolio internationally

We propose;

- YILPORT, as a multi purpose port operator, we focus on **gateway cargo** and we see a strategic focus on **cargo owners**. We are proposing sustainable business and growth to liners in our terminals
- As an **independent port operator**, we are looking to generate long term business partner with each and every liner
- Our **port centric logistic** activities support the liner-agency activities and keep the competitiveness in our ports, beyond the terminal gates
- We are proposing **world class service** level in every terminal that we are operating and strong hinterland where the liners can easily access and get the cargo

YILPORT HOLDING's 17 YEARS TIMELINE OF GROWTH

2004 – 2005

Acquisition of Sedefport and Alemdarport
YILPORT Container Terminal and Port Operations Inc. established
YILPORT Gebze terminal opened



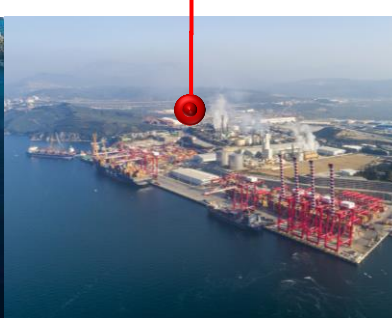
2011

Acquisition of 50% Malta Freeport



2012

YILPORT Holding established
Acquisitions of Gemport and Rotaport in Turkey



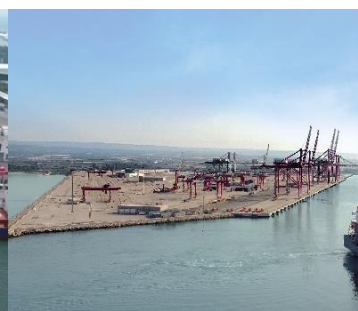
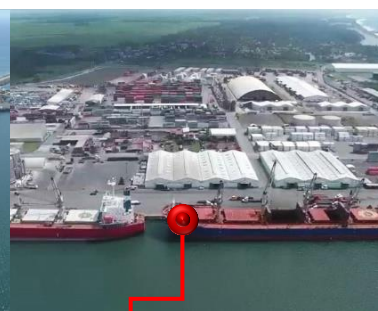
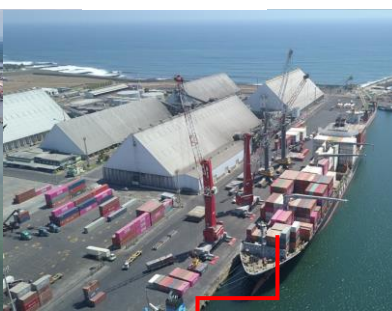
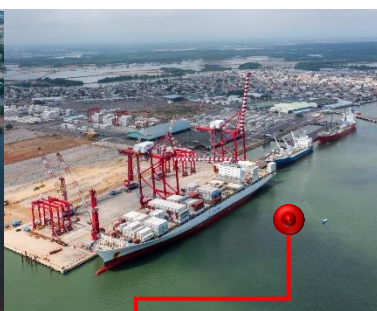
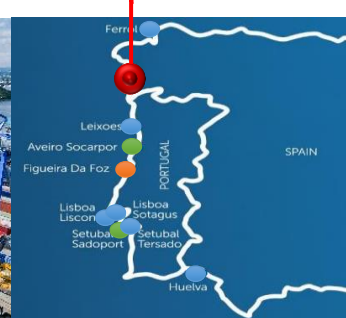
2014

Acquisitions of Gavle CT, Stockholm Nord Dry Terminal and Oslo CT.



2015

Acquisition of TERTIR Group (10 Terminals)



2016

Acquisitions of Gävle BSG, Solventas and Puerto Bolivar

2017

Operation started in Puerto Bolivar
Yilport Nordic Logistics Group established

2018

Taranto CT
Acquisitions of Puerto Quetzal, Guatemala and MoU signed for Gulfport Mississippi

2019

Puerto Quetzal, Guatemala operations started

2020

Taranto SCCT Terminal operations started
Automated paper WH at Gavle

YILPORT PROVIDES ONE-STOP-SHOP

COMBI & INLAND

Emty Depot (sweeping, repair, washing and etc...)
Storage (bonded, temporary bonded, open, closed)
Special yards (mineral, marble, tiles)

LOGISTICS & FORWARDING

Freight Forwarding
Trucking
Rail
Feeder
Combined Services

LIQUID

Vessel Operations
Liquid to Container
Transfer from Container to Tank
Blending and Marking



RO-RO

Vessel Operations
Inspection
PDI
Touch-up

GENERAL BULK

Vessel Operations
G.C./Bulk to Container
Project
Lashing – Blending - Fumigation

TUGBOAT & PILOTAGE

Maneuvering
Tugboat
Pilotage

CONTAINER

Vessel Operations
CFS (Stuffing, stripping, inspection)
Reefer services
IMO Services

YILPORT HOLDING Business Development Strategy:

We focus on the BCO and the hinterland connection ...

Business Model with;

- HQ Sales and Marketing and BD upon global accounts and guiding the regions
- Regional Management for Sales & Marketing and BD in the region
- CRM system applied

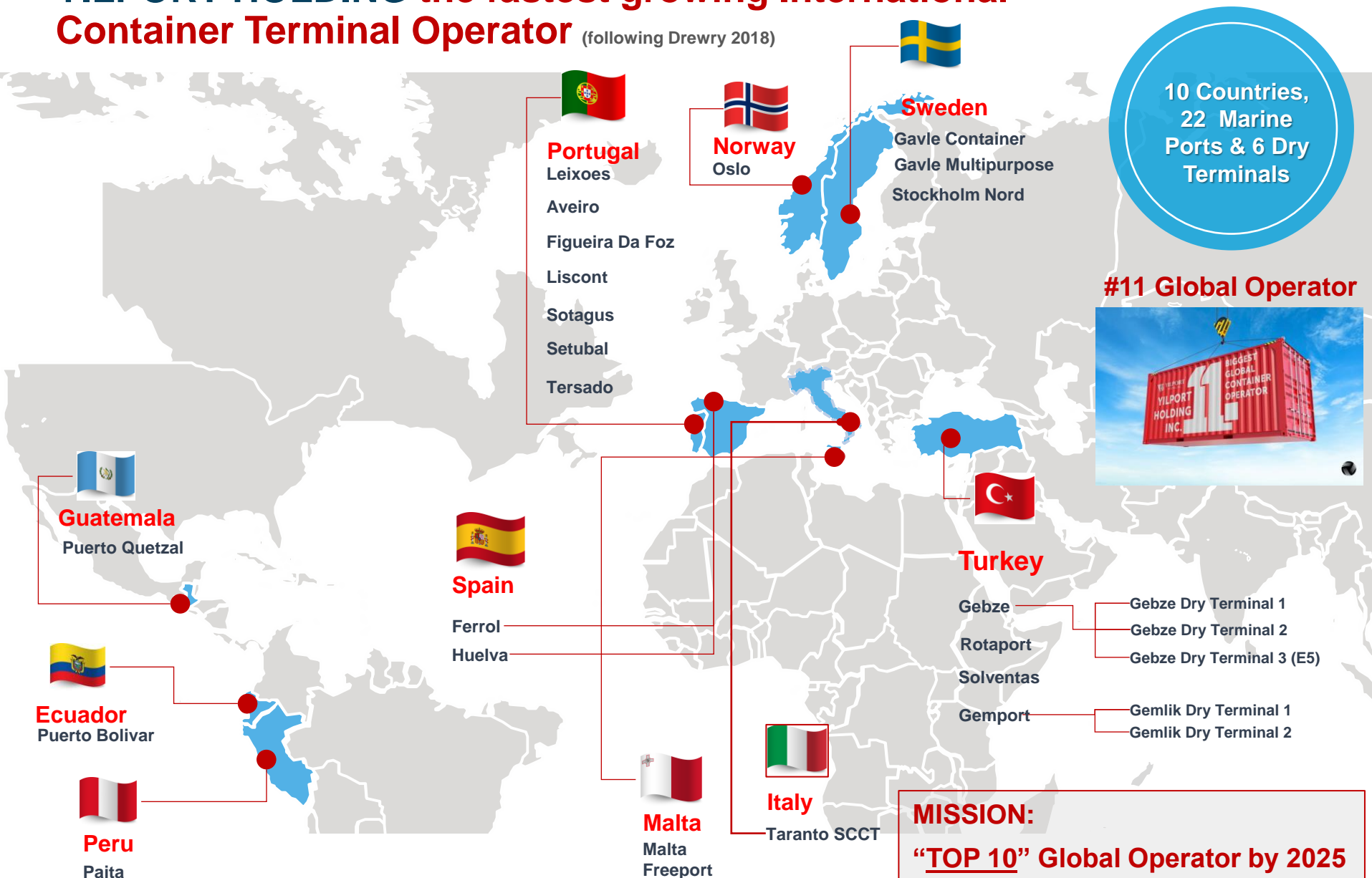


Transitex: logistics across 4 continents & 40 Countries

ETI Logistics: internal and external logistics provider in Turkey

Nordic Logistics: supply chain support and logistics provider for the regional industry

YILPORT HOLDING the fastest growing International Container Terminal Operator (following Drewry 2018)



YILPORT Holding IBERIA Terminals



YILPORT Regions / **IBERIA – Atlantic Gate** of Europe



CONTAINER
3,300,000 TEUs



RO-RO
40,000 CEUs



GENERAL CARGO
6,000,000 TON

- Located among the Iberian Peninsula, YILPORT Iberia terminals offer best solutions among its multipurpose peers. The terminals are located in Portugal and Spain. They offer easy access to railroads and highways, and the terminals are close to industrial zones.
- YILPORT Leixões, Lisbon Liscont, Lisbon Sotagus, Setubal, Tersado, Figueira da Foz, Aveiro, Huelva and Ferrol Terminals offer bonded and non-bonded areas, warehouses, supported by logistic services.
- From beginning to the end, YILPORT Iberia terminals provide entire import and export operations 24/7 with a long-term YILPORT know-how discipline.



Ferrol

Leixoes

Aveiro

F.Da Foz

Liscont

Sotagus

Setubal

Tersado

Huelva

YILPORT HUELVA / SPAIN



DEEP SEA TERMINAL AT ATLANTIC COAST OF SPAIN GATE TO ANDALUSIA

**Berth Max. Vessel Size Handling
Capacity:**

Post Panamax Plus 9.600 TEUs

Latitude & Longitude:

37° 9'2.24"N
6°52'38.94"W

Terminal Area:

54.000 m²

Capacity:

Container: 400.000 Teu

Length of Quay:

500 m

Drafts:

14 m

Equipment:

QC: 5*

RS: 5

Spreaders: 2

**3 QC cranes
deployed in July 2021*