

The background of the entire image is a composite of industrial scenes. The top half shows two workers in grey shirts working on a large, circular industrial machine. The bottom half shows a worker in a yellow shirt working on a complex mechanical assembly. The image is overlaid with semi-transparent geometric shapes: a large light blue triangle on the left and a smaller red parallelogram in the center. The text is white and bold, providing a high-contrast look against the dark, industrial background.

WiCHMANN
• ELECTRIC •

WiCHMANN
• GROUP •

WiCHMANN
• DRIVE SHAFTS •

WiCHMANN

•DRIVE SHAFTS•

TECHNOLOGY
DRIVEN BY US.

www.wichmann-gelenkwellen.de



Business **Portfolio**

The WiCHMANN group is a high-performance organisation in the area of development, production and maintenance of cardan shafts for commercial and industrial applications of all kinds (paper mills, steel mills & railway vehicles).

FAMILY-RUN BUSINESS SINCE 1980



- Owner-managed family business in the second generation
- Company foundation in 1980 by Horst Wichmann
- 7 production sites in Germany, Netherlands, Belgium, Switzerland and United Arab Emirates; headquarter in Lotte near Osnabrueck, Germany.
- Activities:
 - > Commercial vehicle replacement business
 - > Industrial OEM segment & replacement business

Our Company Professional Team

WiCHMANN

Wichmann GmbH is backed by a dedicated team of around 140 highly qualified specialists, engineers and technicians who work passionately every day on customized solutions.



www.wichmann-gelenkwellen.de

WiCHMANN

OUR HEADQUARTER
in Lotte



www.wichmann-gelenkwellen.de



QUALITY FEATURES

- Unsplitted bearing eyes
- Maintenance-free function
- Highest possible strength and minimum deformation under load
- Certified welding process
- Engineering for special solutions
- Specific material selection and treatment
- Several Certifications

WICHMANN Certifications

With our certified expertise, we ensure that your drive shafts work reliably and efficiently - for trouble-free mobility in all areas.

DIN ISO 14001:2015 - Environmental management standard

DIN EN 50001:2018 - Energy management

DIN ISO 9001:2015 - Quality management standard

DIN EN 15085-2 CL1 - Welding of new rail vehicles and parts of rail vehicles

DIN 27201-6 - Welding repair of rail vehicles and vehicle parts

DIN EN ISO 3834-2 - Quality requirements for welding manufacturing companies

www.wichmann-gelenkwellen.de



WICHMANN SERVICE CONCEPT INDUSTRY

As a specialist in cardan shafts, Wichmann GmbH offers customized solutions for a wide range of industrial and mobile applications. Whether heavy-duty traffic, high-performance machines or complex production plants - our high-quality cardan shafts ensure reliable power transmission, long service life and maximum operational safety.



Papermachines



**Steel and Rolling
Mills**

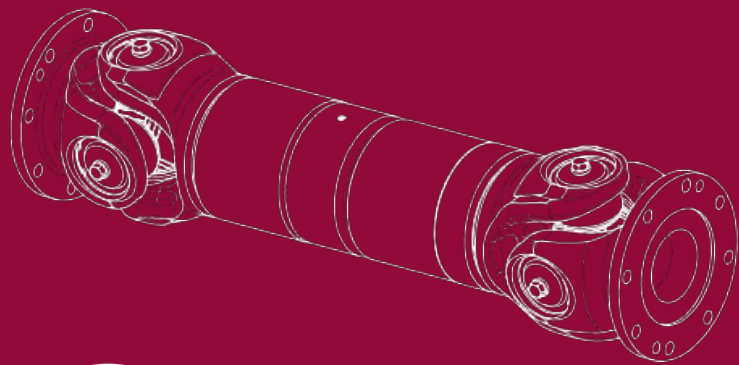


Railway Vehicles



General Machinery

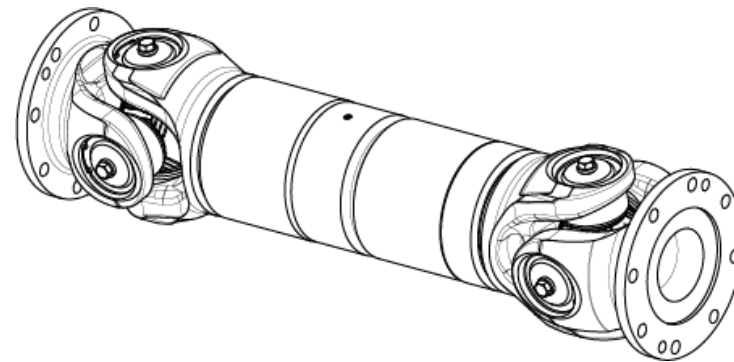
Product Series/Designs



052 00 – 076 00

52 – 76 mm

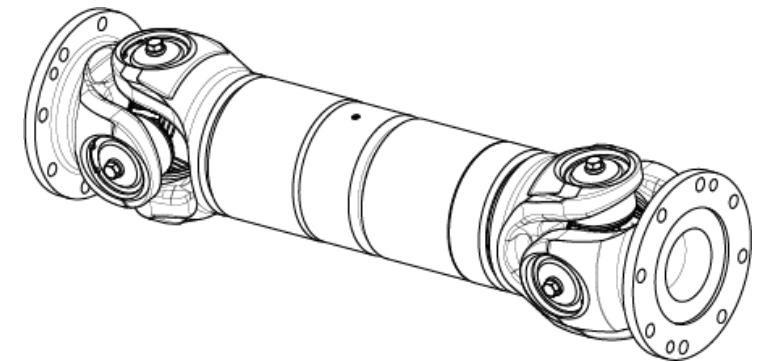
75 – 300 Nm



100 00 – 144 00

100 – 144 mm

700 – 2 300 Nm

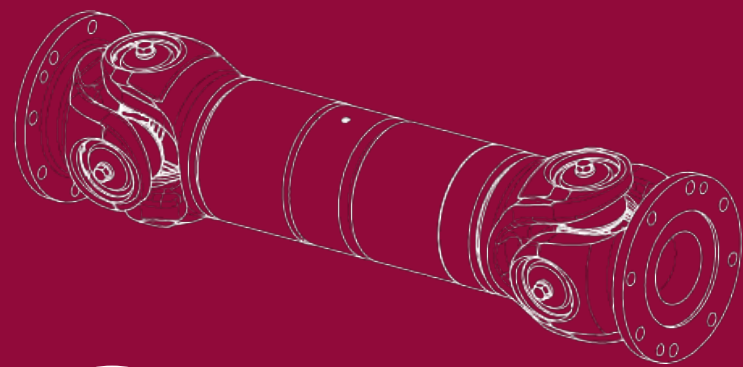


158 00 – 204 00

158 – 204 mm

2 900 – 11 000 Nm

Product Series/Designs

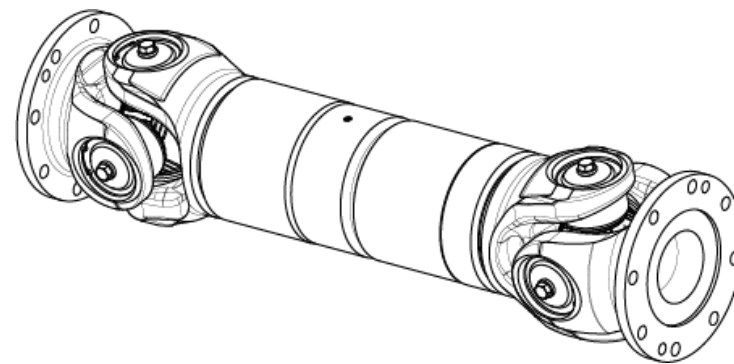


XL

215 00 – 285 80

215 – 285 mm

14 500 – 35 000 Nm

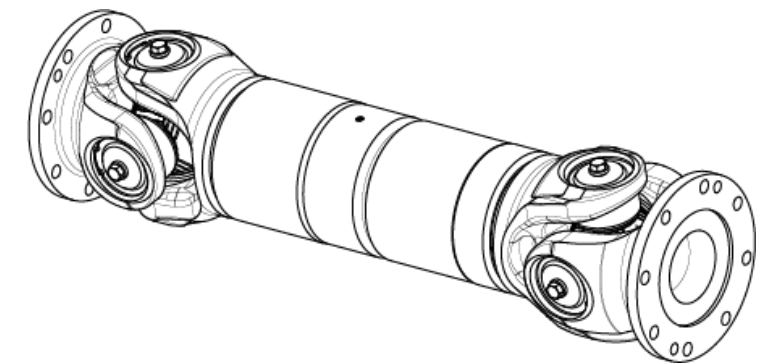


XXL

315 10 – 550 00

315 – 550 mm

50 000 – 625 000 Nm



XXL+

620 00 – 840 00

620 – 840 mm

800 000 – 1 600 000 Nm

WICHMANN E

•ELECTRIC•

TECHNOLOGY
DRIVEN BY US.

www.woelfer-motoren.com



- 80 years of experience – founded by Franz Wölfer
- Focus on squirrel cage motors
- Internal and external cooling options
- Motors were wind manually
- Smaller size and higher power allow us to offer more competitive pricing
- Simpler control systems than standard products
- Smaller motors consume less power, resulting in lower lifecycle costs
- Low downtime due to manual work, special wire, and superior quality

WiCHMANN E

Business Areas

Since 1945, Wölfer has been developing and manufacturing electric motors for use in hoisting equipment, in and on ships as well as in general mechanical engineering. We apply our extensive know-how to produce highly efficient motors for individually adapted drive mechanism solutions.

www.woelfer-motoren.com



WICHMANN E

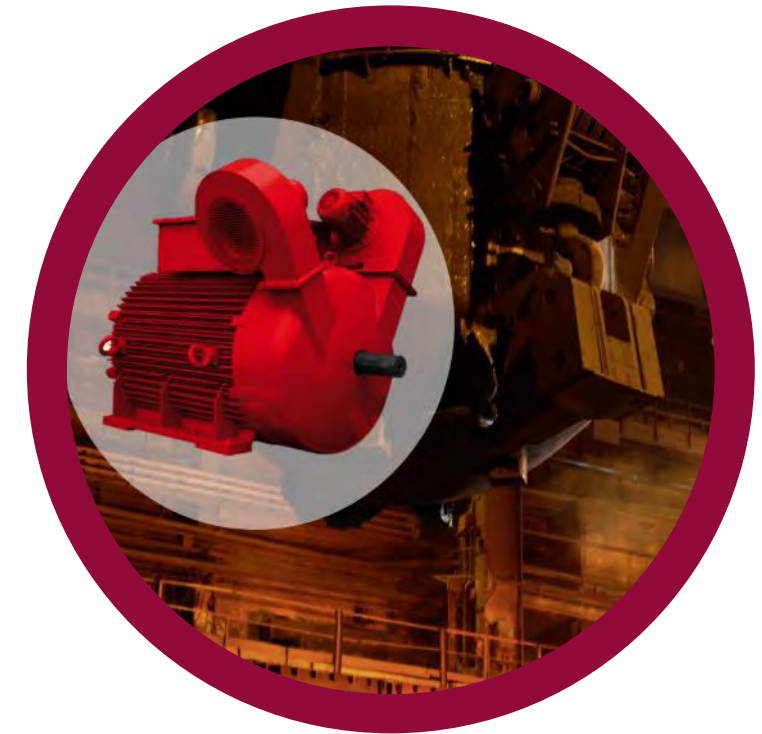
Business Areas



Lifting Applications



Marine Applications



General Machinery

WICHMANN E

Lifting Applications



Container Cranes



Goliath Cranes



Tower Cranes

WICHMANN E

Container Cranes



STS Cranes



RTG Cranes



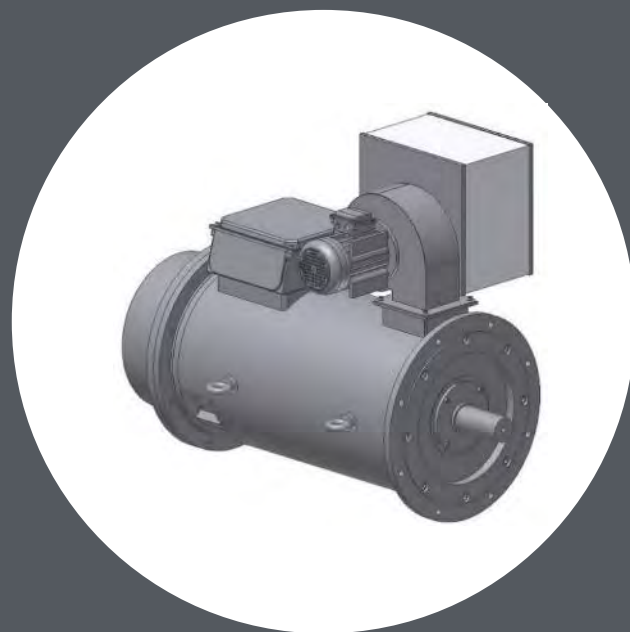
RMG Cranes



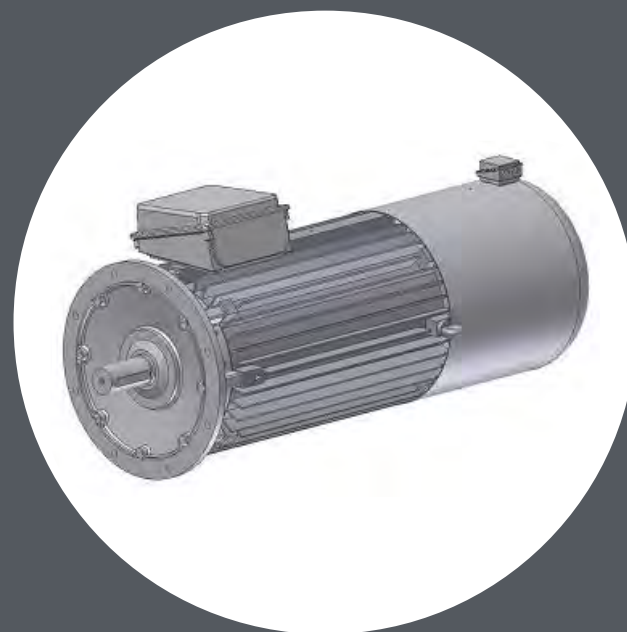
Straddle Carrier

WICHMANN E

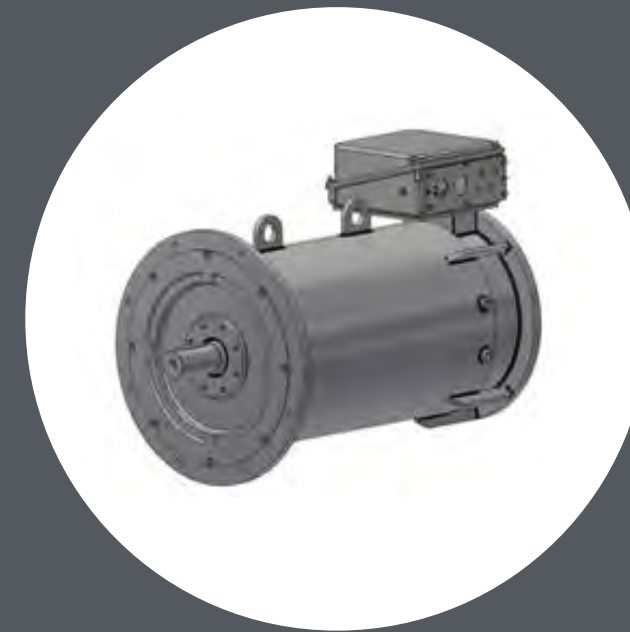
Construction types – IEC classification and different protection classes



IP 23
Inner Cooled
Steel welded housing



IP 54 – 56
Outer Cooled
Grey cast Iron housing

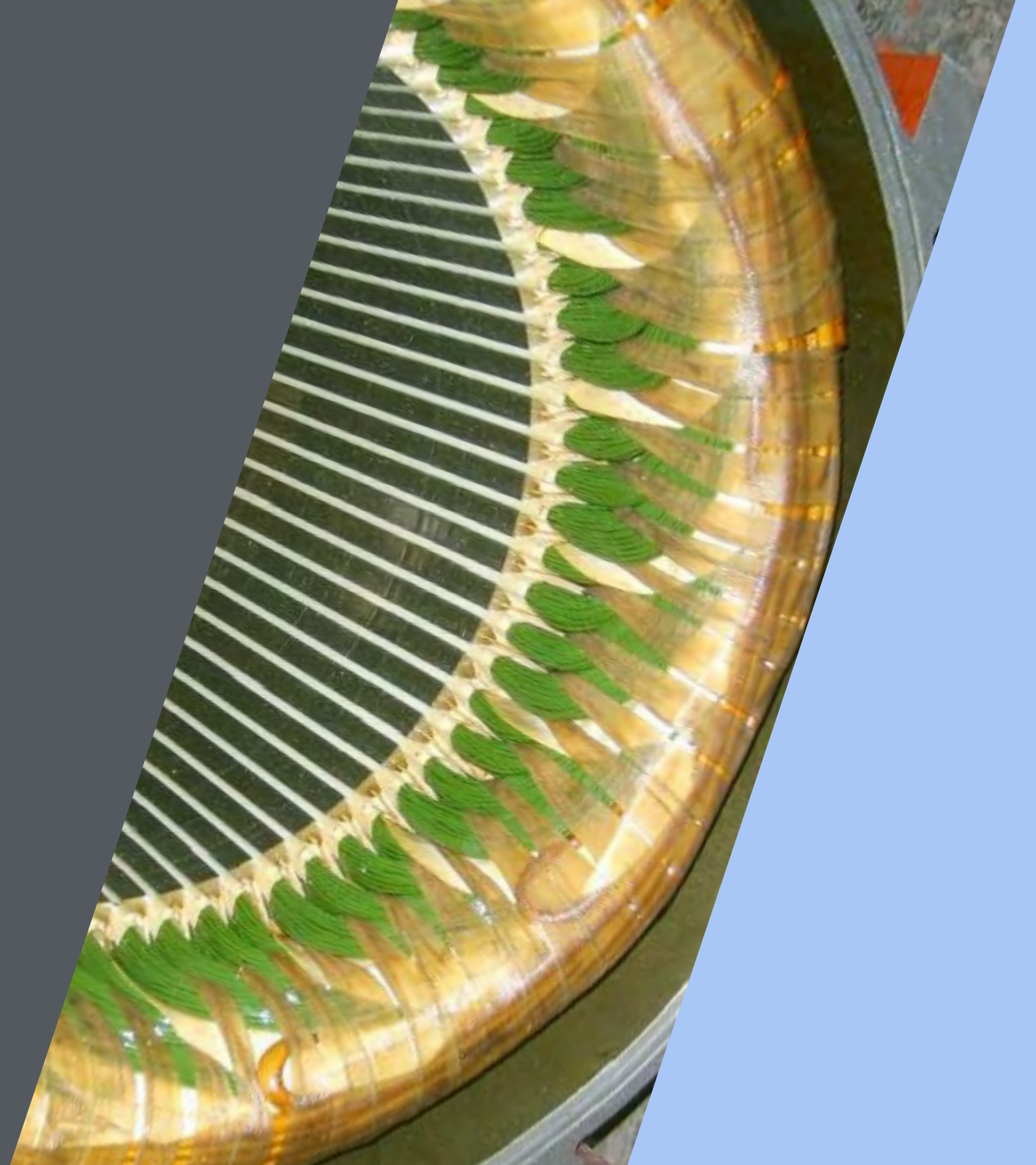


IP 67
Water Cooled
Steel welded housing

WiCHMANN E Windings

- insulation system developed for inverter operation
- Special wires resistant against partial discharges

www.woelfer-motoren.com



WiCHMANN E Rotor

- lowest moments of inertia
- high pull-out torques
- shortest acceleration times
- low currents during start and operation

www.woelfer-motoren.com



WiCHMANN E

Additional equipment

- Brake
- Encoder (specified by customer)
- Two shaft ends
- Anti-condensation heater
- All kind of winding protection
- Preparation for bearing monitoring and vibration monitoring
- Insulated bearings

www.woelfer-motoren.com



WICHMANN E References

DP World

Super Post Panamax STS cranes

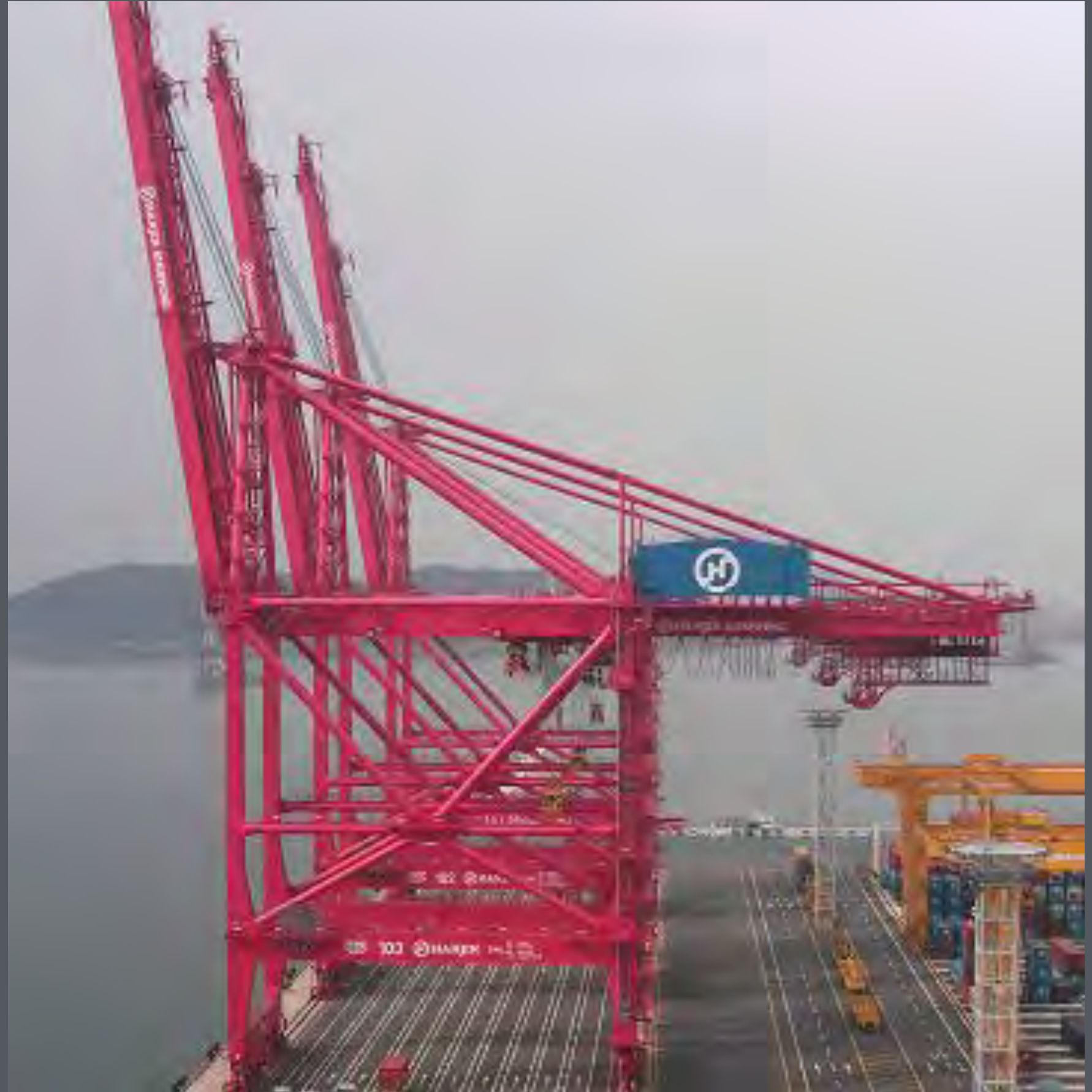
www.woelfer-motoren.com



WICHMANN E References

Newport Terminal Busan – Korea
Electrical OEM – ABB

www.woelfer-motoren.com



WICHMANN E

References

RTG-Crane in Ningbo – China, Kone

Hoist:

Motor type: DRKF 315 L-6bbbT

Power: 1 x 210 kW

Trolley:

Motor type: DRK0 180 M-4bSFB10HT

Power: 2 x 15 kW

Gantry:

Motor type: DRK0 200 L-4bSFB25HT

Power: 4 x 30 kW

www.woelfer-motoren.com



WICHMANN E

References

SPLEIPNIR with 2 x 10.000 t cranes by
Huismann / Netherlands



www.woelfer-motoren.com

WiCHMANN E

Summary

- 80 years of expertise in custom designed motors
- Lower moment of inertia
- Lower starting current
- Shorter acceleration time
- Robust design, smaller weight and frame size
- Energy savings
- Lifting more containers per hour
- Possibility to use smaller cables and inverters due to lower currents

www.woelfer-motoren.com



Thank You

