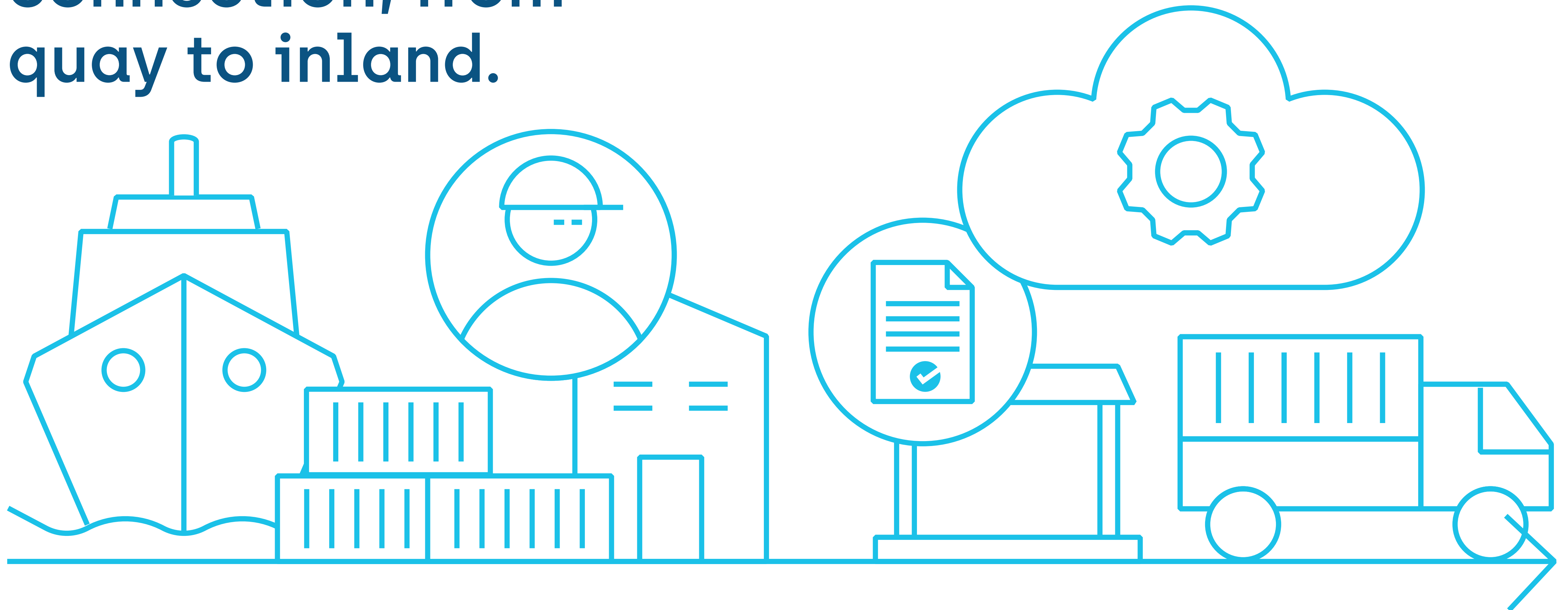


Introducing Nexus:
Hinterland Community System



**Clarity, control &
connection, from
quay to inland.**





Ports don't operate in isolation. Behind every container gate is a sprawling, high-stakes hinterland of trucks, terminals, customs, and cities—an ecosystem as complex as the port itself.

And yet, most digitization efforts stop at the dock. Core systems focus on the vessel. The cranes. The yard. But what about the chaos beyond the fence line?

Our Nexus Hinterland Community System (Nexus HCS) is designed for the entire hinterland ecosystem—giving you the tools to streamline operations, unify stakeholders, and create true end-to-end visibility.

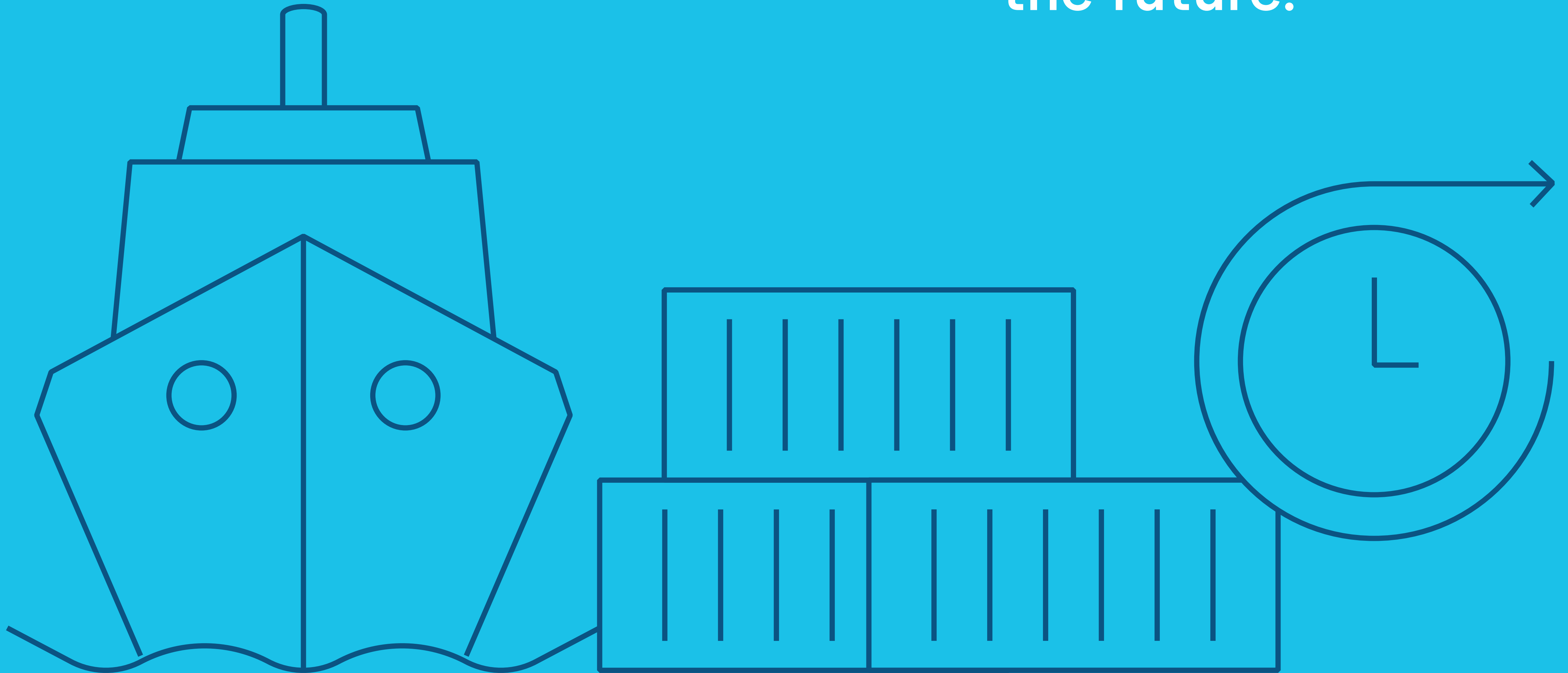
Today, ports that master their hinterlands unlock the real competitive advantage: faster throughput, lower costs, resilient supply chains, and fewer surprises.



Consider the ecosystem. Every day, clearing agents, freight forwarders, shipping lines, trucking companies, and customs officials negotiate a tangle of systems, processes, and timelines.

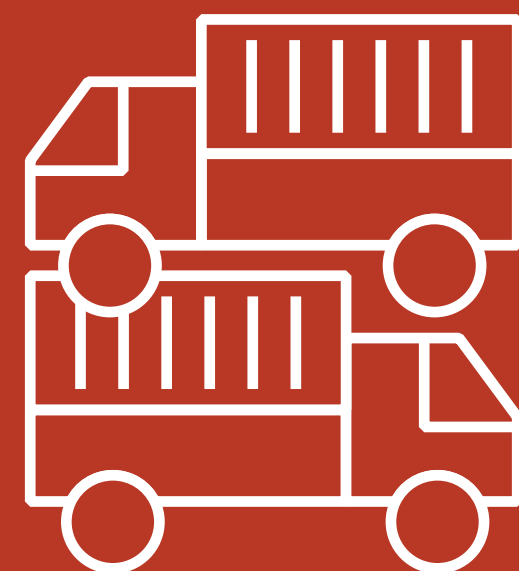
NFident's Nexus HCS flips this model on its head, turning disconnected actors into a synchronized network. We integrate with your existing Terminal Operating System (TOS), national eWaybill platforms, security systems, and customs workflows, providing a single operational picture from the ship to the city.

“Ports that connect
the hinterland win
the future.”





The dire cost of hinterland fragmentation



Gates choke under
unscheduled arrivals.



Truck turnaround times stretch
from minutes to hours.



Costs stack up through idle
assets, missed slots, and rework.



Cities grind with traffic and
emissions from port congestion.

Orchestrating a seamless flow..

Building a smart hinterland

It's not just about digitizing what you have. It's about rethinking how the entire system operates.

The result? Lower turnaround times. Smoother handoffs. And a port operation that doesn't just work—it flows.



From pains



to solution

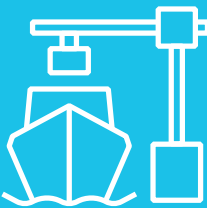
PORT OPERATION



Vessel Arrival



- Documentation delays
- Customs bottlenecks
- Dwell times



Unloading & Yard Management



- Notifications clearance
- Real-time manifest sharing
- Predictive yard allocation



Customs Clearance

HINTERLAND TRANSFER



Secure Cargo Corridor



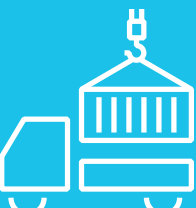
- Truck queues
- Unauthorized access
- Traffic congestion



Gate Managanet

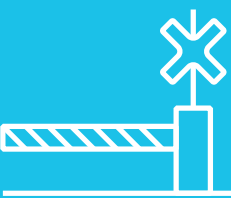


- Dynamic appointment scheduling
- Automated gate processing
- Real-time truck tracking



Truck Marshalling Yard

INLAND OPERATIONS



Dry Port Inland Terminal



- Lost visibility after port exit
- Manual handoffs
- Compliance gaps



Delivery to Importer / Exporter

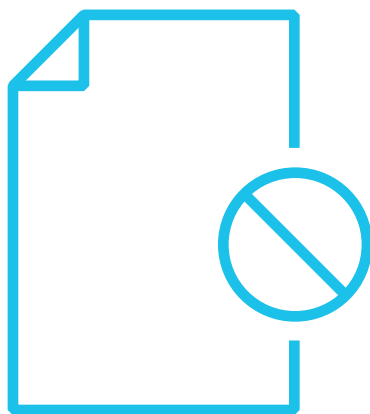


- eWaybill integration
- End-to-end cargo tracking
- Cross-jurisdiction data exchange

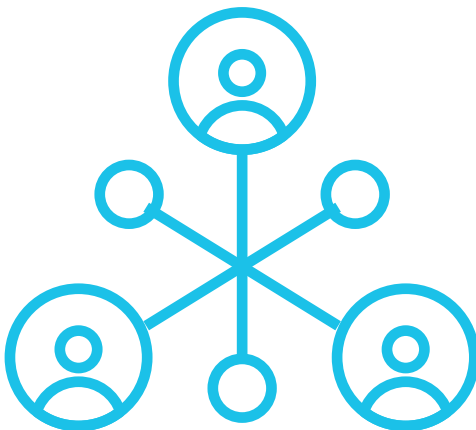


Cross-border coordination

Nexus HCS core features: the hinterland, re-imagined, re-engineered.



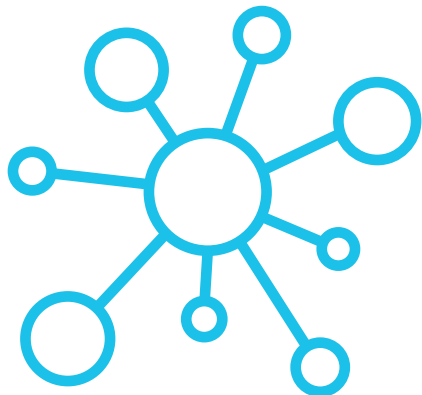
Paperless workflows



Complete stakeholder integration



Role-based access and data governance



Predictive, real-time data flows



Secure cargo corridors and eWaybill automation



Dynamic scheduling and capacity management



**"Complexity is
inevitable.
Chaos isn't."**

“Bridiging the physical and the virtual, with integrated software, infrastructure & services.”



NFident infrastucture that works as hard as your data

While the Nexus HCS orchestrates the digital side of the hinterland, physical operations stay connected through our integrated hardware modules.

Together, these technologies create an environment where trucks move predictably, paperwork happens invisibly, and every shipment has a clear, secure path through the system.

iGate Automated Entry/Exit Control	NVision Deep Vision Cameras	WIM Weigh-in-Motion
iPortals Cargo Imaging & OCR	RFID Identification Systems	Smart Yards Truck Marshalling
eKiosks Unmanned Lanes	CCC Command & Control Centers	

Every port is unique. So are our solutions.

No two ports are the same. That's why NFident's Nexus HCS isn't a product off the shelf—it's the basis of a strategic partnership. We work directly with port authorities, private terminal operators, inland hubs, and governments to design, deploy, and optimize systems that reflect local realities and global standards.

Compliance leadership	Change management programs	Lifecycle support
Tailored configurations	Full-service onboarding	

The global gap

Why tier 2 hubs can't wait

For too long, digital transformation has been the privilege of the world's largest ports. Tier 1 hubs secured the investments, the systems, and the visibility—while smaller, inland, and intermodal terminals were left navigating complexity with outdated tools and manual processes.

But the global logistics landscape is shifting. As supply chains decentralize and regional trade corridors gain importance, the performance of these underserved hubs is now critical to global flow. Congestion, lack of data, and unpredictable turnaround times at these points don't just stay local—they ripple across continents. NFident's Nexus HCS is designed to close this gap. We bring Tier 1 capabilities to Tier 2 hubs, helping them compete on a global stage without the burden of heavy capital investment or years-long overhauls.

This is more than optimization. It's an opportunity to lead in a new era where every node in the chain matters. And to build the kind of resilient, agile operations that future trade demands.

The ports that move first will set the standard. Those that wait may find themselves permanently outpaced.

"This is more than optimization. It's an opportunity to lead in a new era."

Looking ahead

The ports leading the next decade won't just be larger. They'll be smarter, more agile, and seamlessly connected from vessel to hinterland.

At NFident, we're already delivering that future today.

If you're ready to extend your port's digital perimeter, harmonize your logistics community, and unlock new levels of efficiency and resilience, let's talk.

Re-engineering port communities from the inside out.



nfident.com
info@nfident.com
sales@nfident.com

Frankfurt, Germany
Amman, Jordan
Dubai, UAE.