

Unlocking Tomorrow's Potential **TODAY!**



Port of Salalah Introduction

We have over 25 years of experience in elevating global supply chains and lifting regional industries with connections that unlock opportunities for growth – offering a world-class infrastructure, optimal trading conditions and tailored logistic solutions.

PORT OF SALALAH SNAPSHOT

1998

Operation Start



Public listed company
Traded on Muscat
Securities Market



Largest Employer in
Dhofar
2200+ Staff



Area :
87 hectares
Quay length:
5,600 m



27 STS
cranes
Capacity
6 m TEUs



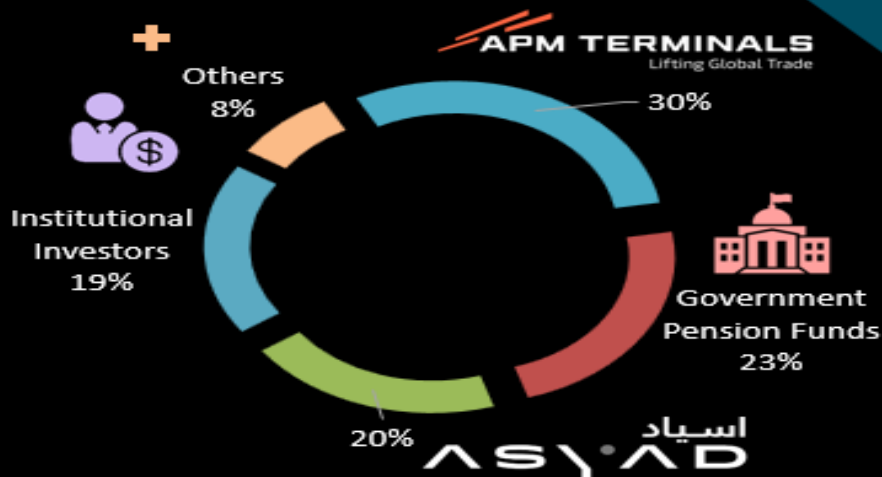
30 years
Concession
Agreement



14 Berths in
General Cargo
Terminal



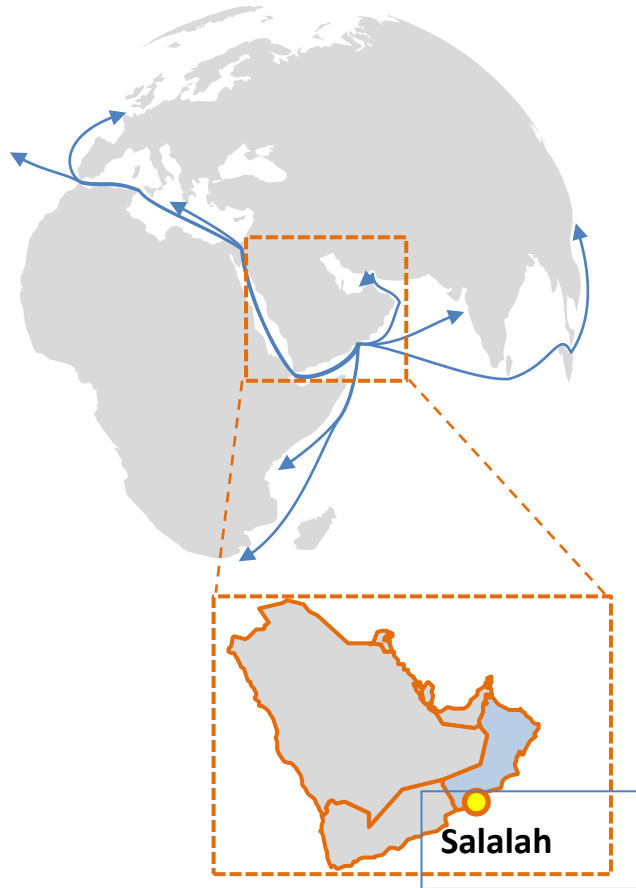
6 Berths in
Container
Terminal



ميناء صلالة
Port of Salalah

Salalah offers the opportunity for businesses to gain competitive advantage..

We are at the heart of a world of opportunities...



At the crossroads of global trade routes:

- Located on the ocean routes connecting South and East Asia with Europe, North Africa and Americas, and the upper Gulf with East Africa
- Large connectivity through global shipping hub Port of Salalah
- Benefiting from favourable climate

In a favourable political climate:

- Neutrality in regional conflicts makes Oman a unique access point to the region
- Part of GCC trade agreements, FTA with USA
- Ongoing extensive reforms to facilitate ease of doing business

...with facilities that make it easy to leverage them.



- **3rd largest port** in the **GCC** and largest port of Oman
- **Most efficient Large sized terminal** in the world and **2nd overall world ranking**
- **50+ direct connections**

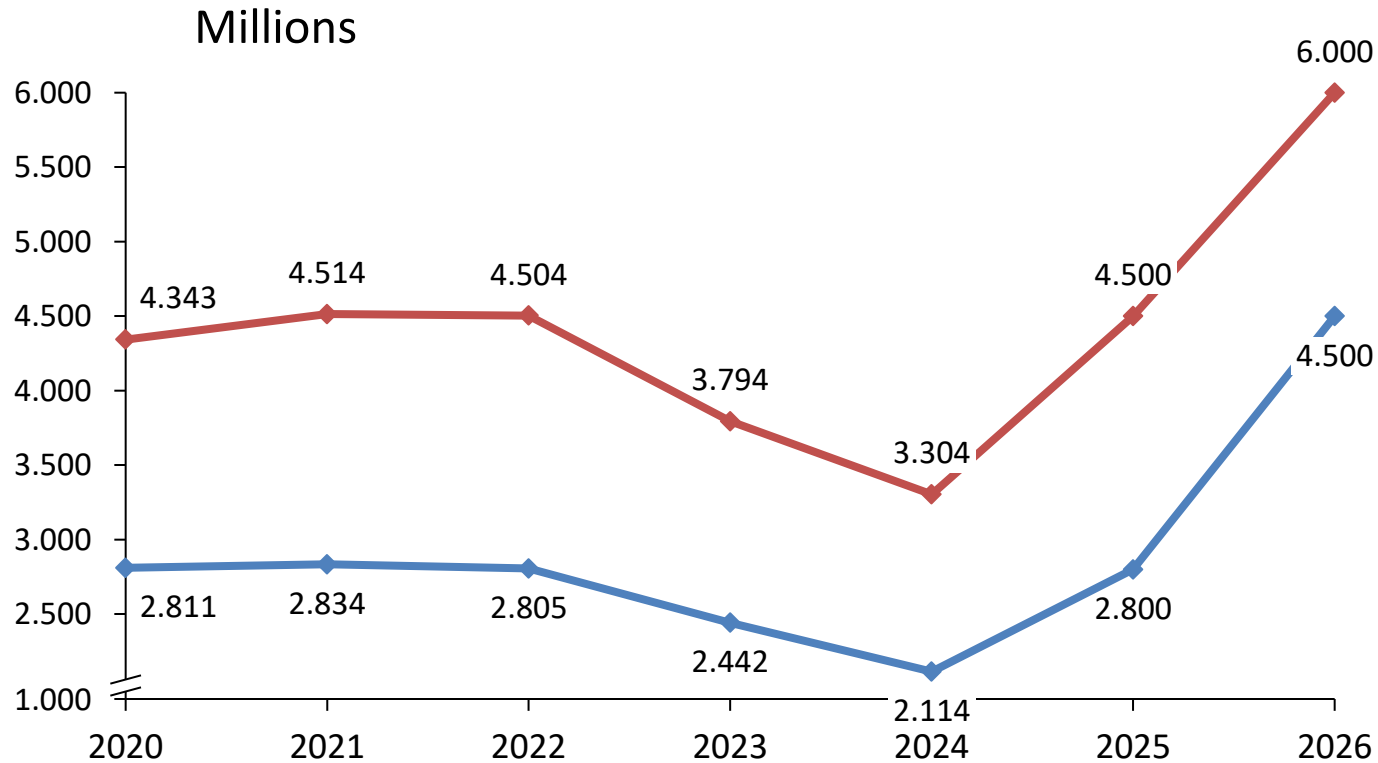


- **High quality office space, warehousing and developed land**
- **0% corporate tax and 0% customs duties**
- **100% foreign ownership** and **no minimum capital requirements**



- **State-of-the-art infrastructure**, with excellent location for both **tourism** and **airfreight** purposes
- Ability to handle both **narrow-**and **wide-body aircraft**
- **Proximity** to other Ecosystem assets

VOLUME DEVELOPMENT OVER LAST 5 YEARS



—◆— Moves (M)
—◆— TEU's (M)

Volume Capacity:

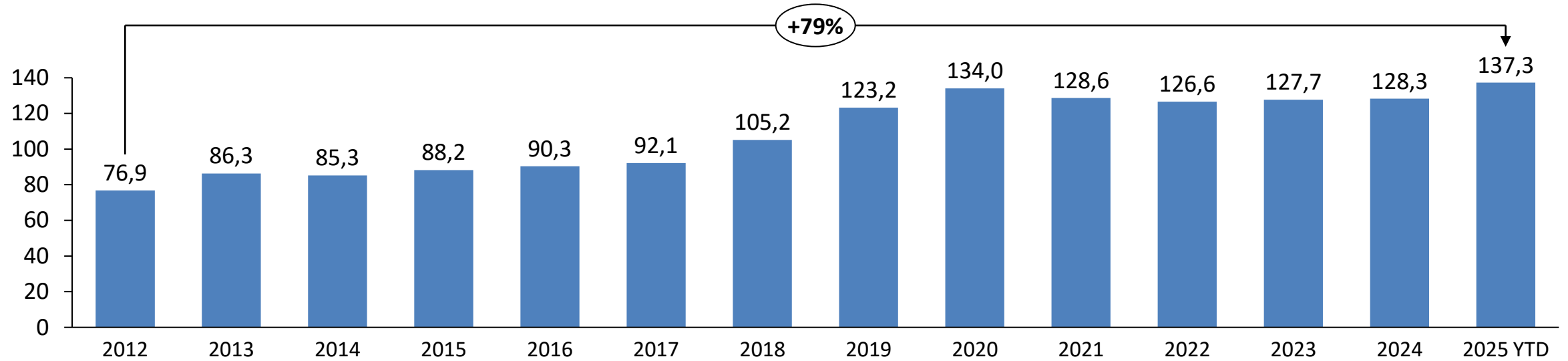
- Port of Salalah reached the design capacity in 2021 at 4.5M Teus
- Mid -2023 POS commenced the upgrade and expansion project to increase the volume capacity by 28%
- POS today has the capability to handle over 6M Teus.

Notes:

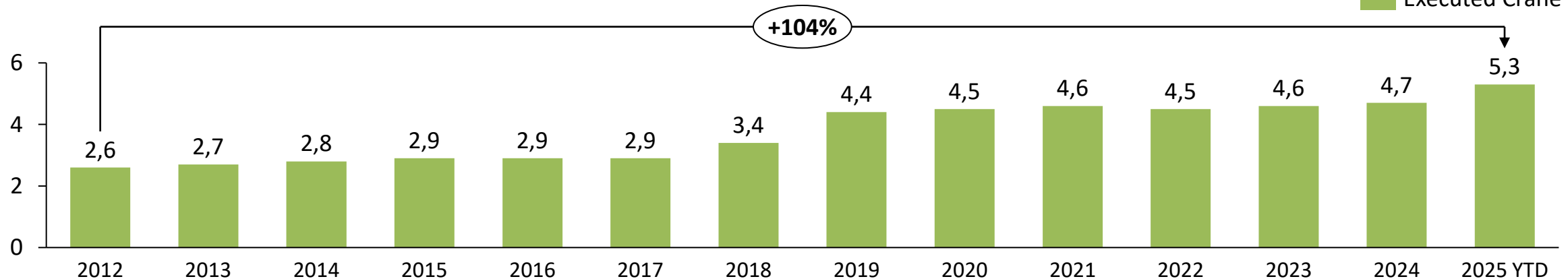
2023-2024 Expansion project commenced and volumes were reduced
2025-2026 are forecasted

QUAY PRODUCTIVITY & CRANE INTENSITY

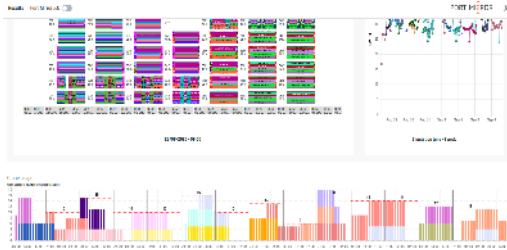
BMPH



Executed Crane Intensity



Port Mirror



- Port Mirror is a simulation tool that is connected to both the Terminal system and Shipping lines
- Port Mirror simulates operations from the next 24 x hours to 2 x weeks ahead using the information from the Terminal and shipping lines
- Port Mirror helps the terminal to manage its resources better and identify operational bottlenecks ahead of time shifting to a proactive resolutions of problems

Asset Digitization



AD – Asset Digitization

- Digitalizing the terminal equipment with GPS
- Live Asset Health monitoring by engineering
- Ability to identify real time equipment position
- Visualize workload , hotspots and idle equipment.
- Ability to use this information to aid a better decision in equipment deploying and avoiding operational bottlenecks

Gate Automation



Gate Automation

- Separation of Man/Machine
- Faster service to the customers
- More volume with same number of gates
- Reduction in service failures
- Increasing workforce productivity per move

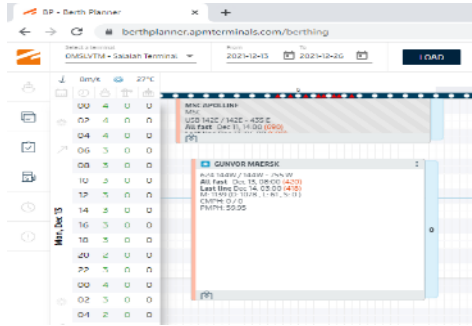
Crane OCR



Crane OCR

- Separation of Man/Machine
- Truck Alignment under Quay reducing waste
- Reduction in service failures
- Increasing workforce productivity per move

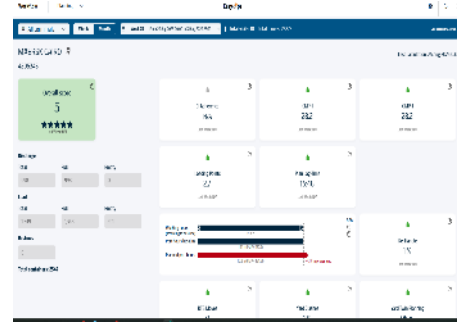
Berthing Tool



Berthing Tool is an online berthing application. It provides:

- Real time update
- Liner Schedules up to 60 x days ahead , Imported to TOS rather than manual creation
- View access for customers eliminating the need to share updates
- Customers do need to wait for hours for a terminal update

Easy OPS



Easy OPS

- Easy OPS first serves as a virtual check list between various teams in POS and the shipping lines in planning a vessel visit and maintaining deadlines.
- Easy OPS visualizes the planning quality with leading metrics to ensure a smooth vessel execution

RTG Optimizer



RTG Optimizer is a semi – automated yard dispatching application

- Automated Yard CHE range allocation
- Evaluation and prioritization of job lists for yard CHE
- Yard visualization for operator
- Identification of hot spots
- Increase Yard CHE productivity
- Reduction of Human errors

ACE



ACE stands for **Automated Cargo Execution** platform. Integration of this application will:

- Enforce Cut-offs
- Auto Data validation between TOS & Liner system
- Auto – Generation of Load lists
- Auto generation of COPRAR EDIs



شكرا لكم - THANK YOU

PORT OF SALALAH | PO. BOX: 369 | SALALAH - 211 | SULTANATE OF OMAN

