

# BETTER WAYS

**MAKING MULTIMODAL TRANSPORT  
MORE SUSTAINABLE ACROSS EUROPE**

**CMA CGM**

 **CONTAINERSHIPS**

# Shortsea services

Containerships multimodal transport services connect north-western Europe, the Baltics and Russia with the Iberian Peninsula, the Canary Islands and Morocco.

With door-to-door transport by shortsea, rail, road and barge, we combine multiple modes of transportation with innovative logistics services to provide reliable, secure and cost-effective supply chain solutions. We specialise in 45' high cube pallet wide (45' HCPW) containers and offer a wide range of fully multimodal containers, offering you a safe and flexible alternatives to transport your goods.

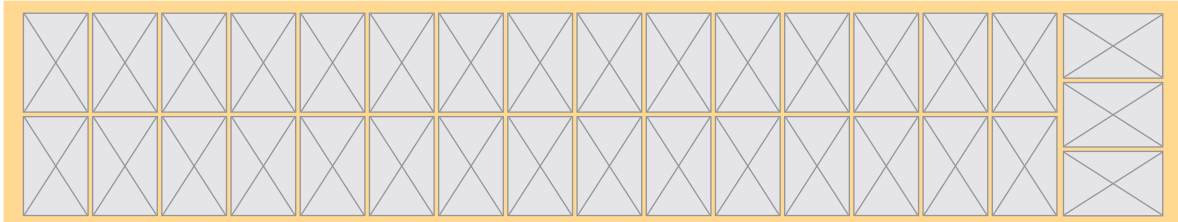


# Size matters to us

Extensive fleet of 45' HCPW containers is essential when competing with trailers

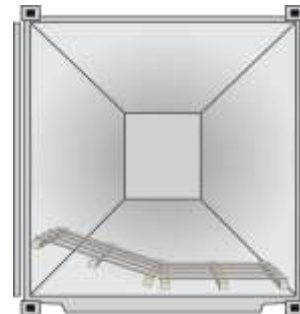
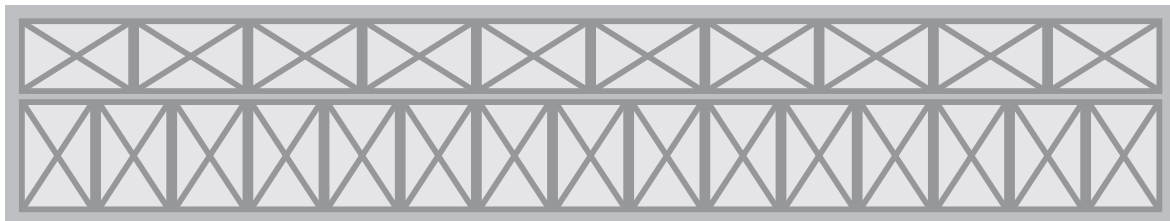
## 45'

33 euro pallets (1,2 m x 0,8 m)



## 40'

25 euro pallets (1,2 m x 0,8 m)



The 45' PWHC container provides an additional 31% cubic capacity and 32% more pallet intake than a standard 40' unit, offering the **same capacity as a trailer.**

# Why Containerships?

## We focus on sustainability and innovation at every stage of the supply chain

- We are the first European operator to use LNG as the main fuel source across our fleet - including sea and land services
- We share your environmental goals – our LNG fleet is growing, and we're committed to providing more future focused transport solutions

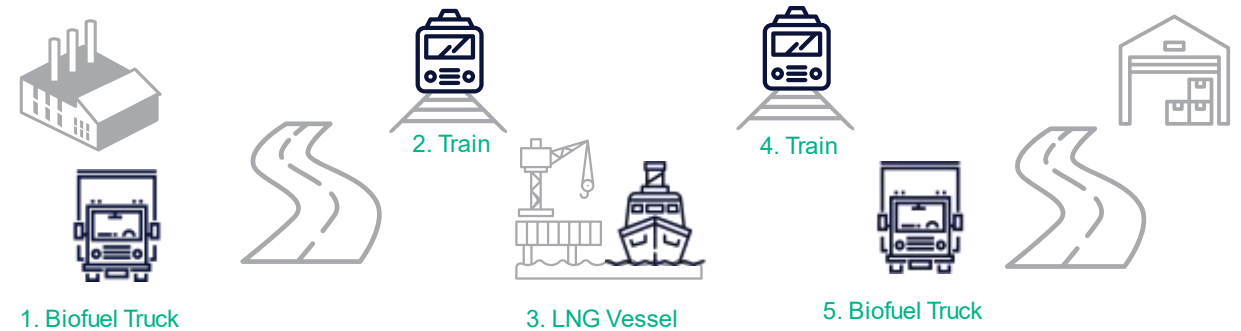


Comprehensive multimodal **door-to-door** service that accommodates all our customers' needs with fully integrated departments to ensure continuity, reliability and reactivity throughout end-to-end transportation chain.

# Sustainable Innovation

# LNGPOWERED

- Intra-European door-to-door deliveries, via the **motorways of the sea**, reducing pollution by trucks and enhancing the range of **environmentally friendly** solutions
- We focus on sustainability and innovation at every stage of the supply chain
- We are committed to:
  - 🌱 **CO<sub>2</sub> reduction** (reduce regional transport footprint)
  - 🌱 **Boldness** (committed to LNG, investing in Electric)
  - 🌱 **Integrity** (respect our employees, our suppliers, our customers and the environment)
- Our door-to-door multimodal transport is based on the most environmentally friendly means of transport



# Concrete steps in our journey towards the energy transition

6 LNG Vessels in operation



1<sup>st</sup> container carrier to introduce an LNG-powered vessel into Europe back in 2018



This year our LNG-powered fleet grew by 50%

LNG is the replacement to Diesel providing **fewer greenhouse gas emissions** and has a massive reduction on air pollutants (Sox, NOx, PM10)



End-to-end solutions focused on sustainable modes of transport



1. Biofuel Truck



2. Train



3. LNG Vessel



4. Train



5. Biofuel Truck





***THANK YOU***

**Urban WILLIAMSON**  
**Short Sea Director Sweden and Norway**

[gtg.uwilliamson@containerships.eu](mailto:gtg.uwilliamson@containerships.eu)