

ABU DHABI PORTS

HSE Best Practices & Sustainable Development

17th DEC 2020





AD PORTS HSE STRATEGY DIRECTION

Safeguarding Port Users

Enable Operational Resilience & Business Continuity

Protection of Environment & Promote Green Port

Sustainable Development

Process Efficiency, Quality Assurance & Customer Happiness

ISO 45001:2018
Occupational Health and Safety management System

ISO 14001:2015
Environmental Management System

ISO 22301:2012
Business Continuity

ISO 10002:2004
Customer Satisfaction

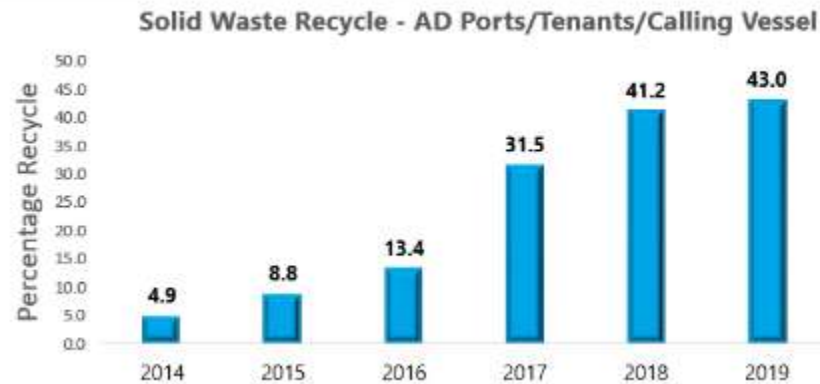
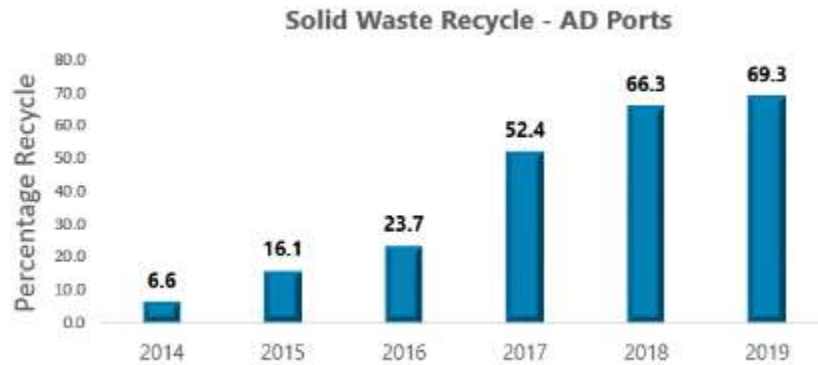
ISO 9001:2015
Quality Management System

ADPHC; OSHAD-SF
Abu Dhabi Occupational Health and Safety System Framework





SUSTAINABLE PERFORMANCE



Efficient Waste Management with vendors and clients

81%

of the female workforce are UAE nationals



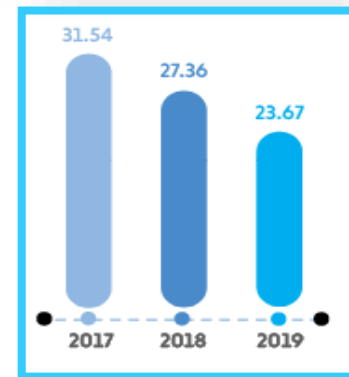
First Women VTS operator in the UAE

55

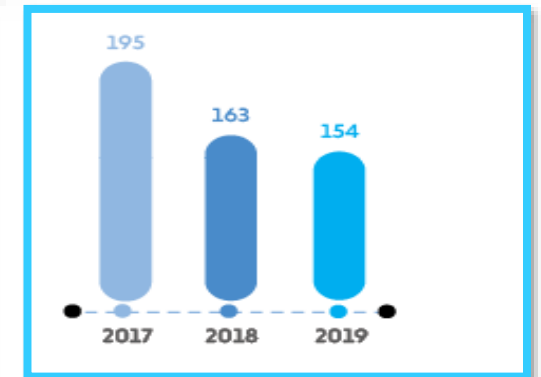
Nationalities on board

04

No. of people of determination employed



KWh per TEU



Fuel Liters per hour for tug boats



KEY INITIATIVES & ACHIEVEMENTS



Introducing Remote Pilotage



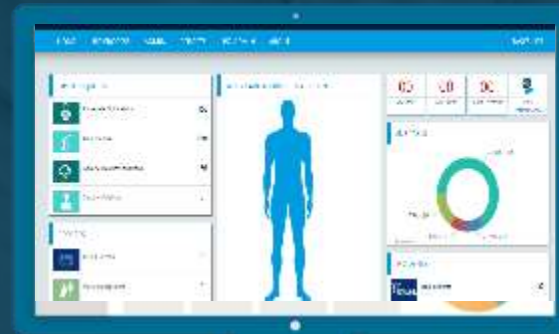
**NEESHAN HSE Awards - Cycle 3
Virtual Ceremony**



2nd Sustainability Report



HSE Week



**Automation of HSE Management
(SENYAR)**



29% Reduction in Traffic Incidents



MARITIME INNOVATION

Autonomous Tug

An autonomous ship is a marine vessel with sensors, automated navigation, propulsion and auxiliary systems, with the necessary decision logic to follow mission plans.

Objectives:

- Sustainable Towage Operation.
- Environmental Friendly, Green Towage & Port's Operations.
- Innovation
- Safe Marine Operation





AD PORTS RISK & RESILIENCE 2020 – 2021 CURRENT BUSINESS CONTINUITY MANAGEMENT FUNCTION STATUS

More than 10 new processes have been developed to enable related functions to mitigate, implement and successfully achieve the following:

**Pandemic Diseases
Vessel Response**



COVID-19 Disinfections



**COVID-19 Cases
Management**



**COVID-19 Cases
Evacuate**



(Which has been circulated as best practice for all UAE Ports to follow)

**Onsite Accommodation &
PCR Test**



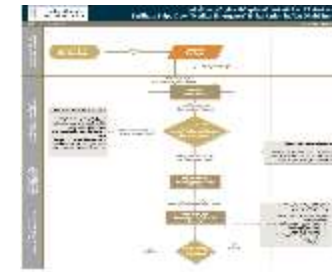
Ship Crew Change



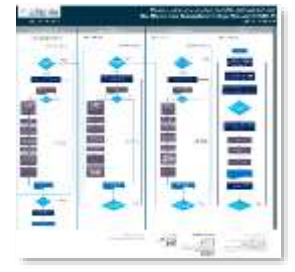
**Recovery Strategic
“Restore”**



BC & Crisis Budget



**Cruise
Recovery Plan**





1,350 *Workers*

Covered by Ports & Maritime
Operations Accommodation
Programme

846 *Workers*

Targeted for Alternative
Workforce Training
Programme

COVID-19 Weekly Report



2020 KEY RESULTS



Support Managing
Workers Residential Cities
350,000 Workers

14,234 *Test*

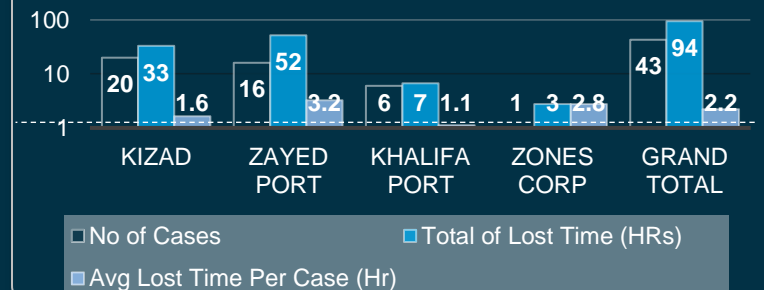
Public Health Care Services
PCR Test Conducted via
(ZP, KP & Al-Dhafra Region)

2,500 *AD Ports Employees*

Adopt Working Remotely
Procedure Successfully



Business Disruption Cases Analysis - 2020



Supported Power Infrastructure Assessment
Project



HORNS OF HOPE GLOBAL INITIATIVE

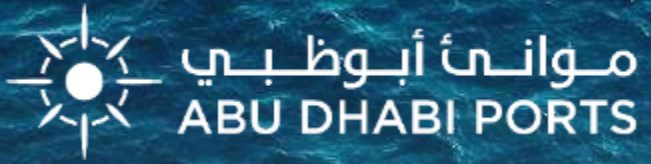
Horns of Hope is a world-first campaign that saw all ships within port harbours across the world signalling their horns for 15-second bursts each evening at 6:30pm in solidarity and recognition of the maritime, healthcare and critical sector personnel working on the front lines to address the impact of COVID-19 and maintain the movement of our essential goods for the community.

- **Number of Ports that Participated : 36**

- **Number of Countries that Participated : 15**



THANK YOU



ADPORTS.AE



@abudhabiports