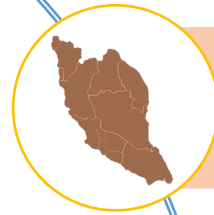


CONTENT

1. INTRODUCTION TO MMD
2. PORT IN MALAYSIA
3. COVID-19

MARINE DEPARTMENT MALAYSIA



MARINE DEPARTMENT PENINSULA

- Established on 1 Mac 1953 (L.N. 74/1953)



MARINE DEPARTMENT SARAWAK

- Enactment of the Merchant Ordinance 1960 (No. 2 of 1960)
- Merchant Shipping Ordinance 1960



MARINE DEPARTMENT SABAH

- Enactment of the Merchant Ordinance 1960 (No.2 of 1960)
- Merchant Shipping Ordinance 1960



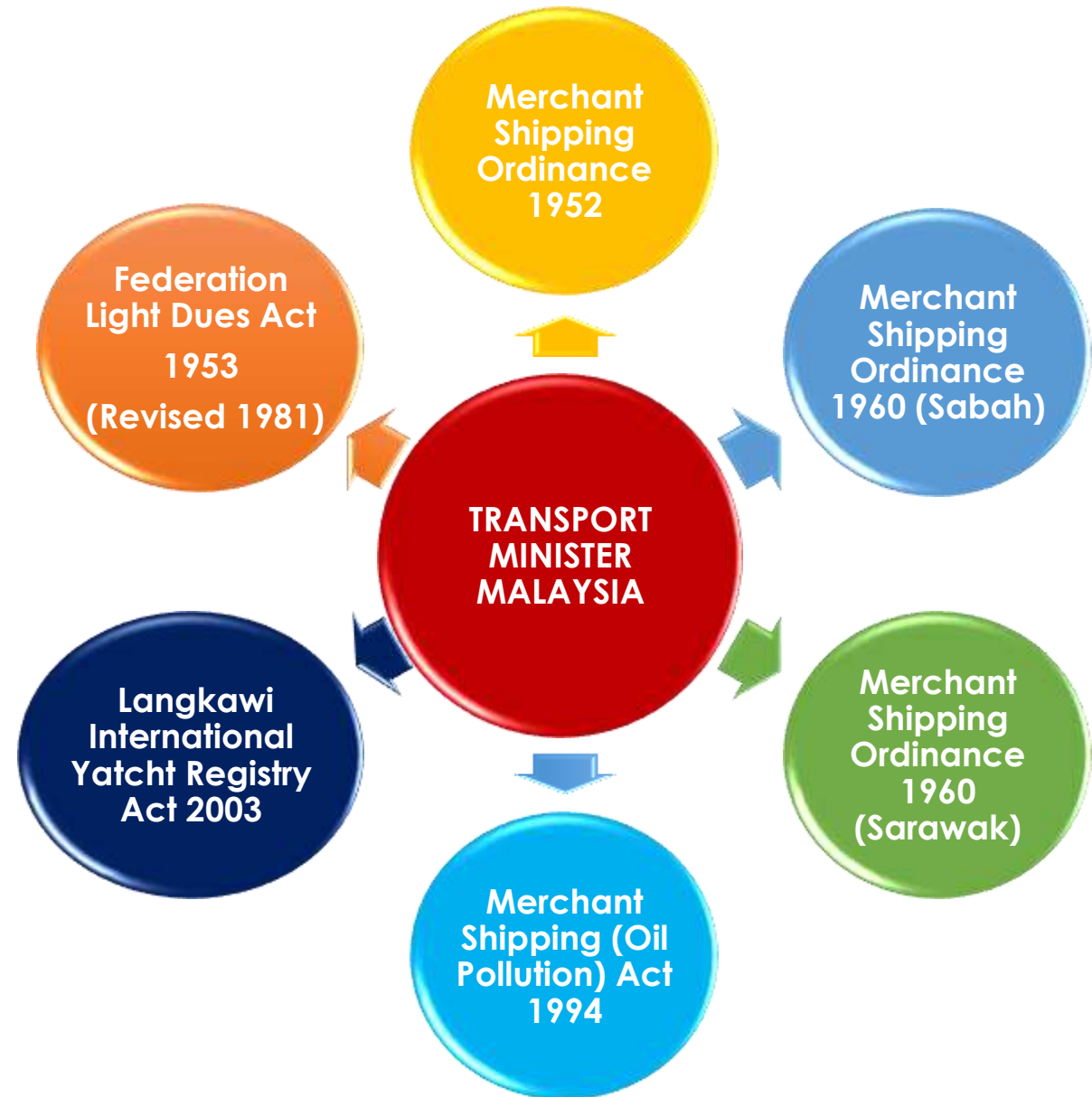
MERGED ON 1 JANUARI 2011

MARINE DEPARTMENT **MALAYSIA**

RESTRUCTURING EXERCISE 2019



LAW



CONVENTION

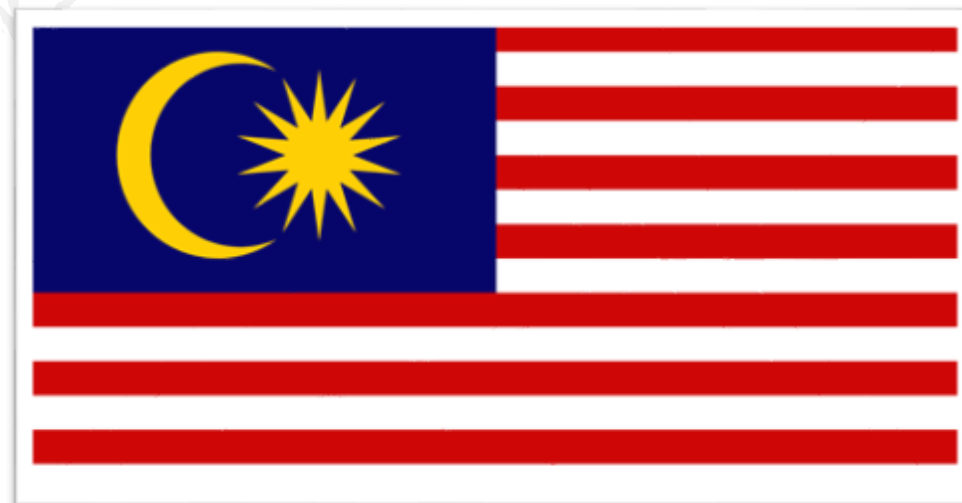
No	IMO CONVENTION	Date of Signature or Deposit of Instrument	Date of Entry Into Force or Succession
1	IMO Convention 48	12 January 1971	12 April 1971
2	LOAD LINES Convention 66	12 January 1971	12 April 1971
3	INMARSAT OA 76	3 September 1976	16 July 1979
4	COLREG Convention 72	23 December 1980	23 December 1980
5	SOLAS Convention 74	19 October 1983	19 January 1984
6	SOLAS Protocol 78	19 October 1983	19 January 1984
7	TONNAGE Convention 69	24 April 1984	24 July 1984
8	IMSO Convention 76	12 June 1986	12 June 1986
9	STCW Convention 78	30 January 1992	30 April 1992
10	FUND Protocol 92	6 January 1995	6 April 1995
11	MARPOL 73/78 (Annex I/II)	31 January 1997	1 May 1997
12	MARPOL 73/78 (Annex V)	31 January 1997	1 May 1997
13	OPRC Convention 90	30 July 1997	30 October 1997
14	CLC Protocol 92	9 June 2004	9 June 2005
15	LLMC Protocol 96	12 November 2008	10 February 2009
16	BUNKERS CONVENTION 01	12 November 2008	12 February 2009
17	MARPOL 73/78 (Annex III)	27 September 2010	27 December 2010
18	MARPOL 73/78 (Annex IV)	27 September 2010	27 December 2010
19	MARPOL Protocol 97 (Annex VI)	27 September 2010	27 December 2010
20	ANTI FOULING 2001	27 September 2010	27 December 2010
21	SOLAS Protocol 88	11 November 2011	11 February 2012
22	LOAD LINES Protocol 88	11 November 2011	11 February 2012
23	OPRC/HNS 2000	28 November 2013	28 February 2014
24	NAIROBI WRC 2007	28 November 2013	14 April 2015
25	BALLASTWATER 2004	27 September 2010	8 September 2017
26	FACILITATION Convention 65	10 April 2019	9 June 2019



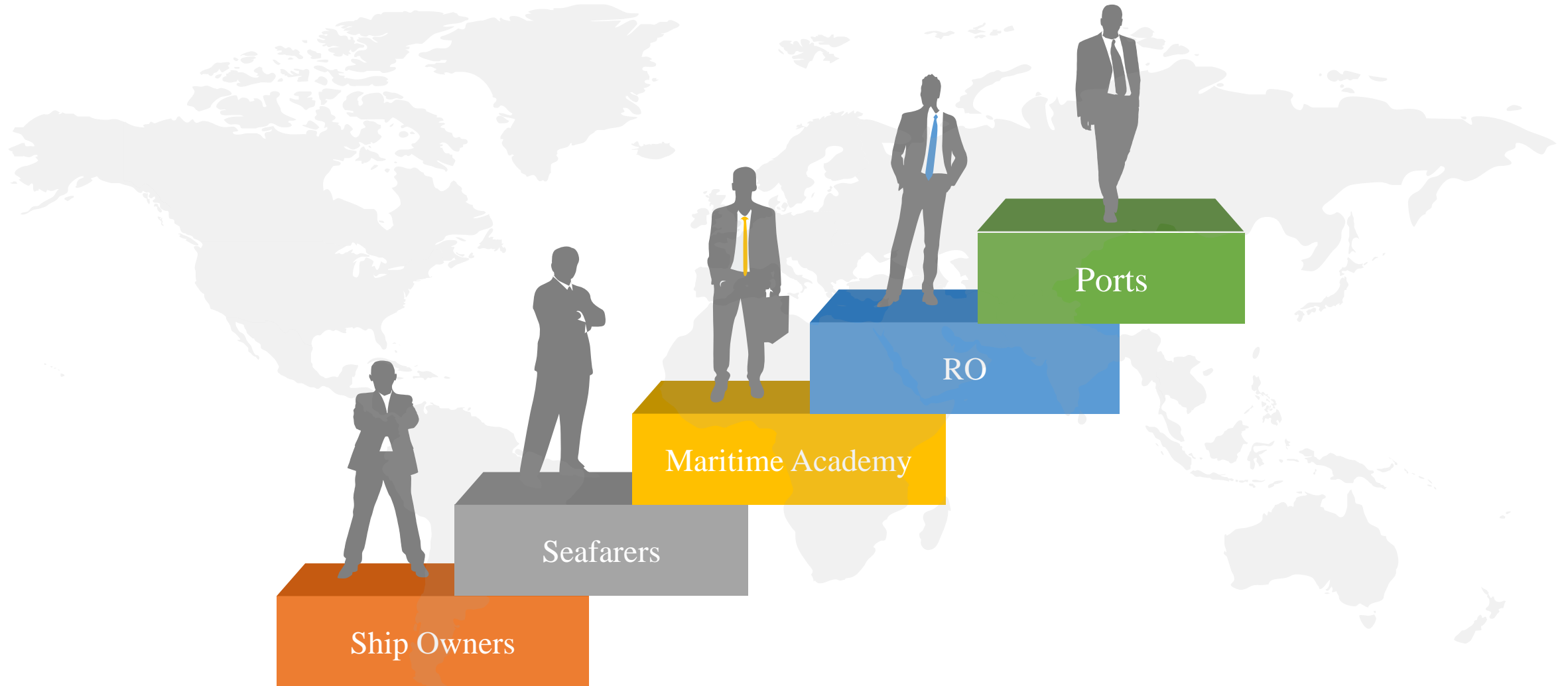
26



1



CLIENTS



MAIN FUNCTION

Regulating Shipping, Ports, Seafarers And Shipping Safety

To carry out this function, the Department is responsible for drafting laws, registering ships, inspecting ships, verifying ports, training institutes, shipping companies and conducting maritime accident investigations, oil spills, securities violations and mismanagement of seafarers' welfare affairs

Shipping Sector Service Provider, Port And Shipping Safety

To carry out this function, the Department plays a role to measure the depth of the shipping flow, control the movement of ships and take care of passenger terminals, cargo terminals, shipping aids, seafaring guesthouses and trust tubes

Maritime Economic Development

To carry out this function, the Department plays a role to develop human capital, development & growth of maritime industry as well as strengthening infrastructure.



PORTS IN MALAYSIA

7 major Federal ports under it's own Port Authority



SECONDARY PORTS

- Minor ports play an important role in helping the movement of goods to users, especially those in remote areas and away from major ports, in addition to supporting certain important industries that are only in the region.
- Ports in Sabah and Sarawak are under the jurisdiction of the State Government of Sabah and Sarawak respective.

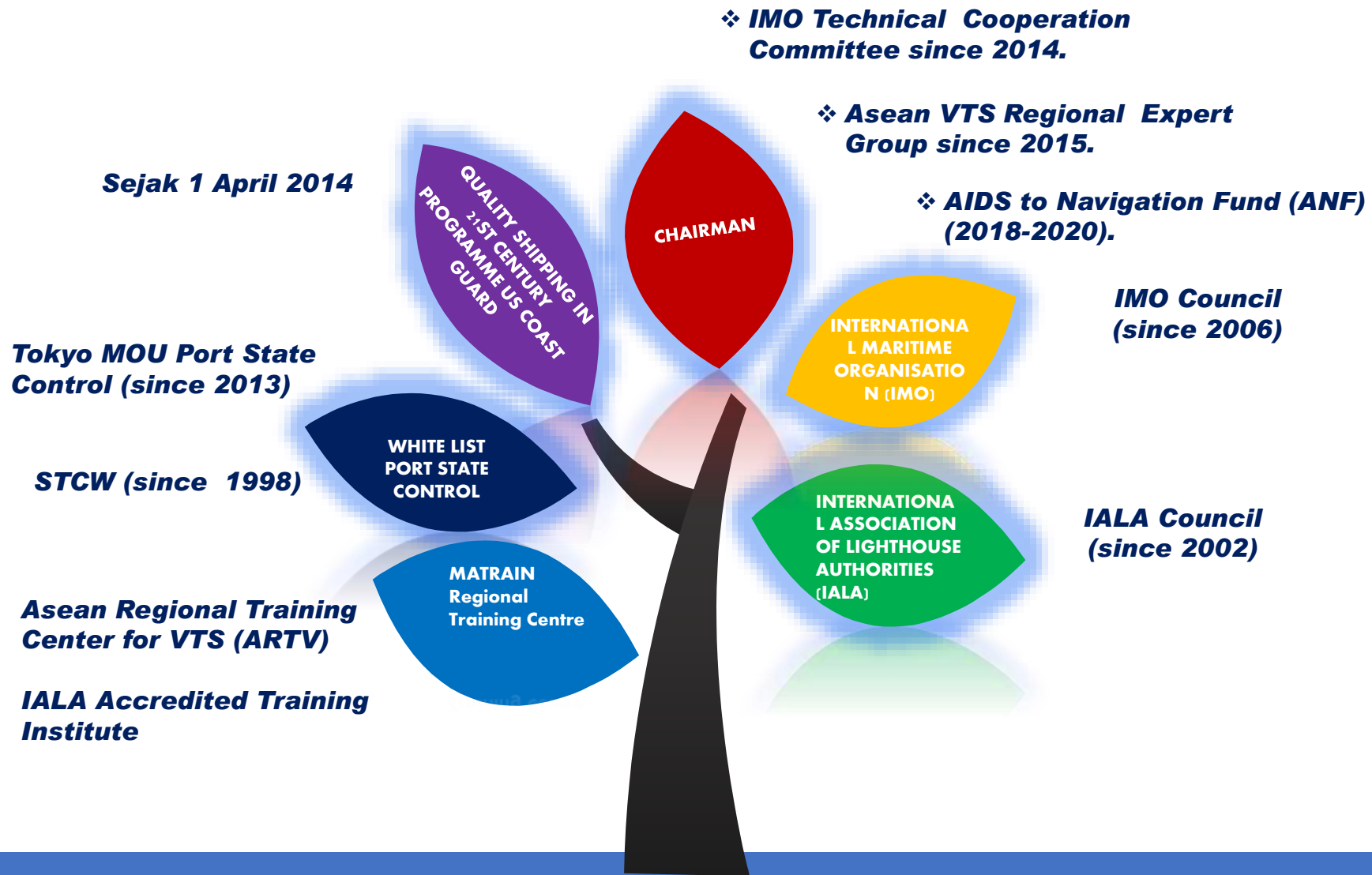


AIDS TO NAVIGATION




Negeri	Rumah Api	Tandarrah Suar	Pelampung Pandu	Jumlah AtoN
Perlis	-	2	8	10
Kedah	-	22	23	45
Penang	3	24	41	68
Perak	-	39	39	78
Selangor	4	33	44	81
Negeri Sembilan	-	12	8	20
Malacca	2	12	15	29
Johor	1	52	72	125
Pahang	1	18	23	42
Terengganu	-	57	31	88
Kelantan	-	8	6	14
Labuan	1	33	20	54
Sarawak	7	43	76	126
Sabah	3	63	29	95
JUMLAH	22	418	435	875

SUCCESS & AWARDS

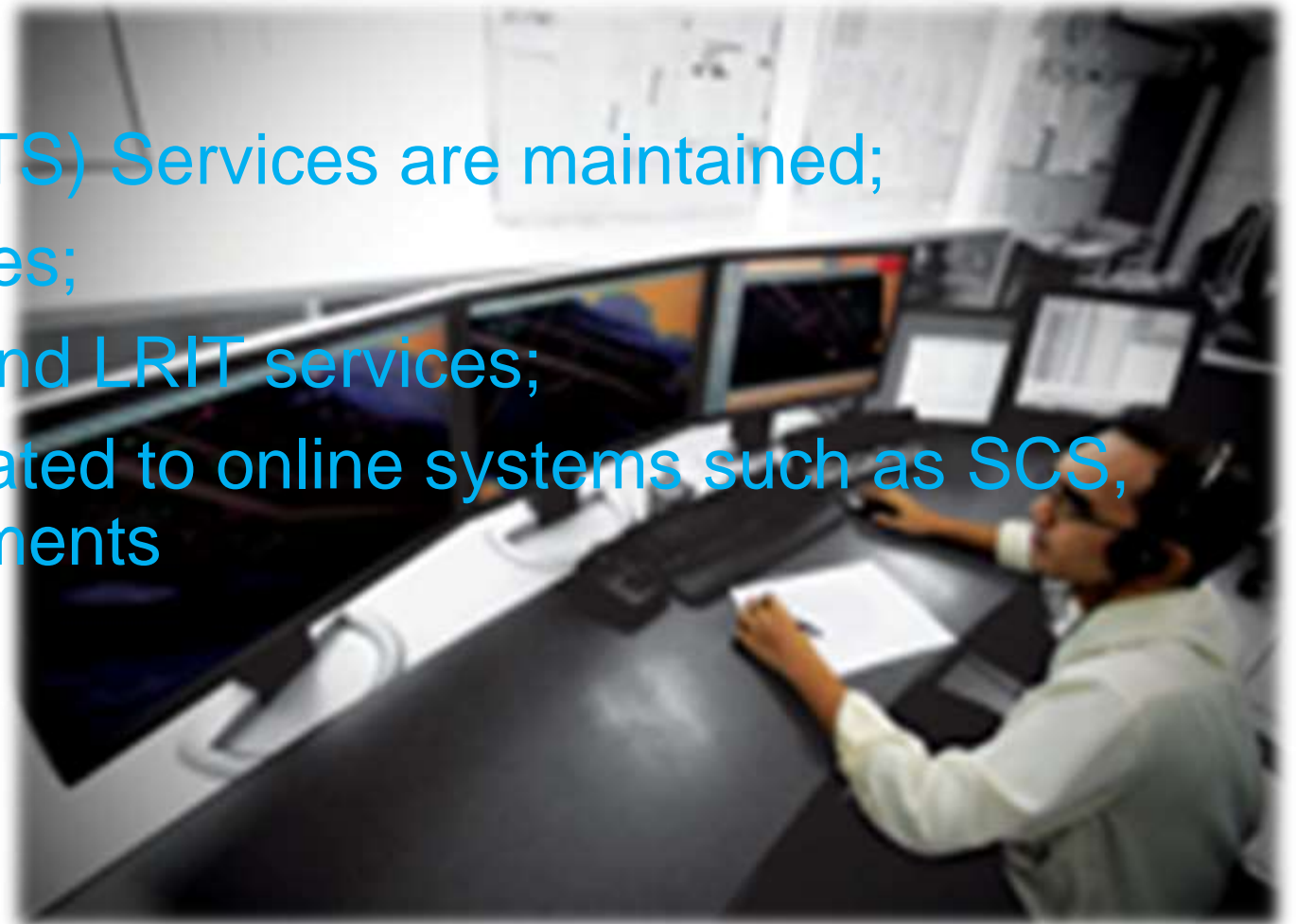


COVID 19 IMPACT ON MARITIME TRANSPORT IN MALAYSIA

- In accordance with Paragraph 2 of the Prevention and Control of Infectious Diseases Regulations, MMD services are defined as necessary services. ALL OFFICES ARE OPEN.
 - Arrangement during MCO
 - Working from home : 60% of the total number of staff
 - Working at the office : 40% of the total staff
 - According to latest guidance
- 

COMMITTED TO SAFETY

- Vessel Traffic System (VTS) Services are maintained;
- Aids to Navigation services;
- GMDSS, AIS, NAVTEX and LRIT services;
- IT services especially related to online systems such as SCS, SDPx and ON-LINE payments
- Seafarer Documentation
- Ship Certification



Port Office.

- *Ship Clearance*
- *Sign On and Sign Off*
- *Port operations under MMD*
- *Pre departure inspection of ferries*
- *Disaster Management at sea*



Sign On and Sign Off

1. Transfer instructions: Malaysia Shipping Notice (MSN) 06/2021 and the guidelines.
2. MOH crew exchange guideline: Annex 9 – Management of COVID-19 at POE, 7 June 2021 edition.
3. NSC SOP (Logistics & Transport) VAT MOT: No SOP for sailors and crew, 23 Jul 2021 edition.
4. Guidelines for NADMA quarantine procedure: latest edition 24 July 2020.



**MARINE DEPARTMENT
MALAYSIA**

Peti Surat 12,
Jalan Limbungan,
42007 Pelabuhan Kelang, Selangor
Telefon: 03-33467620
Fax: 03-31685289
khidmatpelanggan@marine.gov.my



JabatanLautMalaysia



lautMy



jabatanlaut

THANK YOU

“Safer Ships, Secure Ports, Cleaner Seas”

