

# Puerto Bolívar Machala - Ecuador

## ■ Puerto Bolivar Expansion Project



20 January 2022



- Existing Port Infrastructure



- Puerto Bolivar Project Expansion

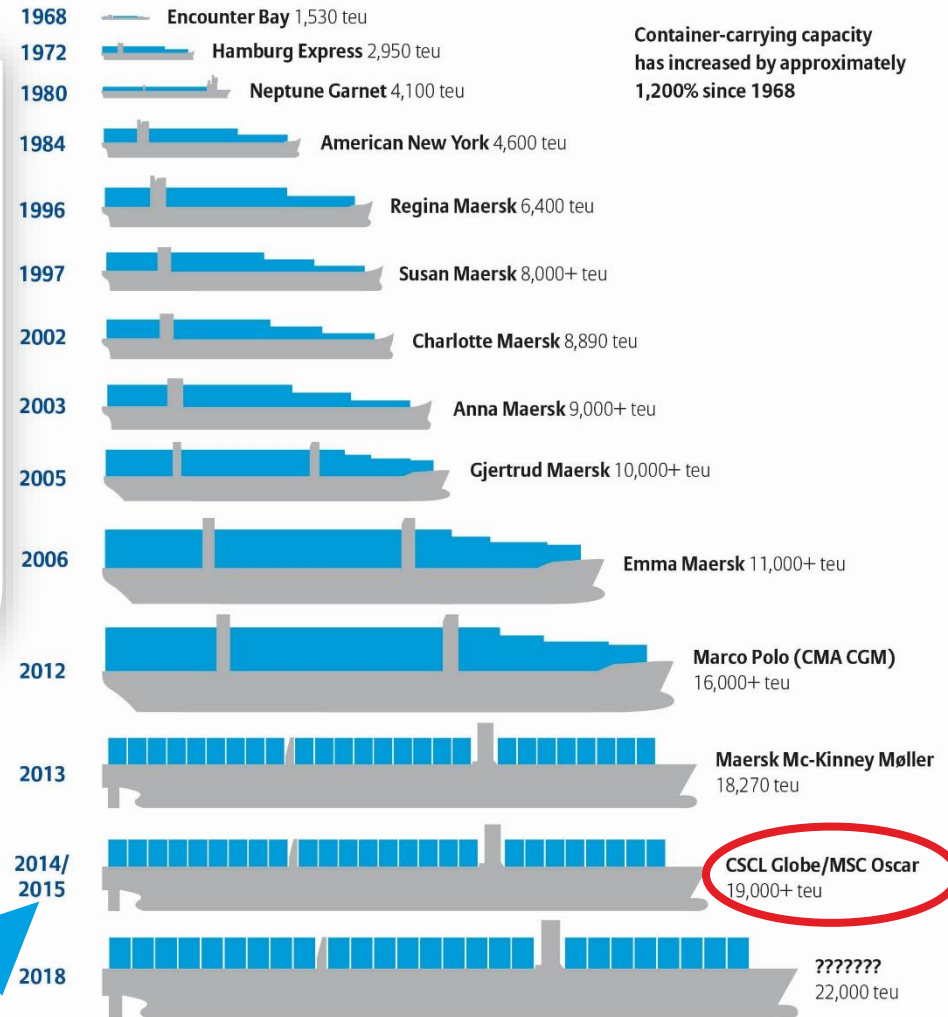


## ■ Design Vessel



- » Design Vessel: MSC OSCAR Type Vessel
- » Quay length: 450 meters long.
- » Quay depth: -16.50 meters below MLWS.
- » 200 000 DWT Container Vessel, 24 rows.
- » Access Channel: -16.50 meters below MLWS

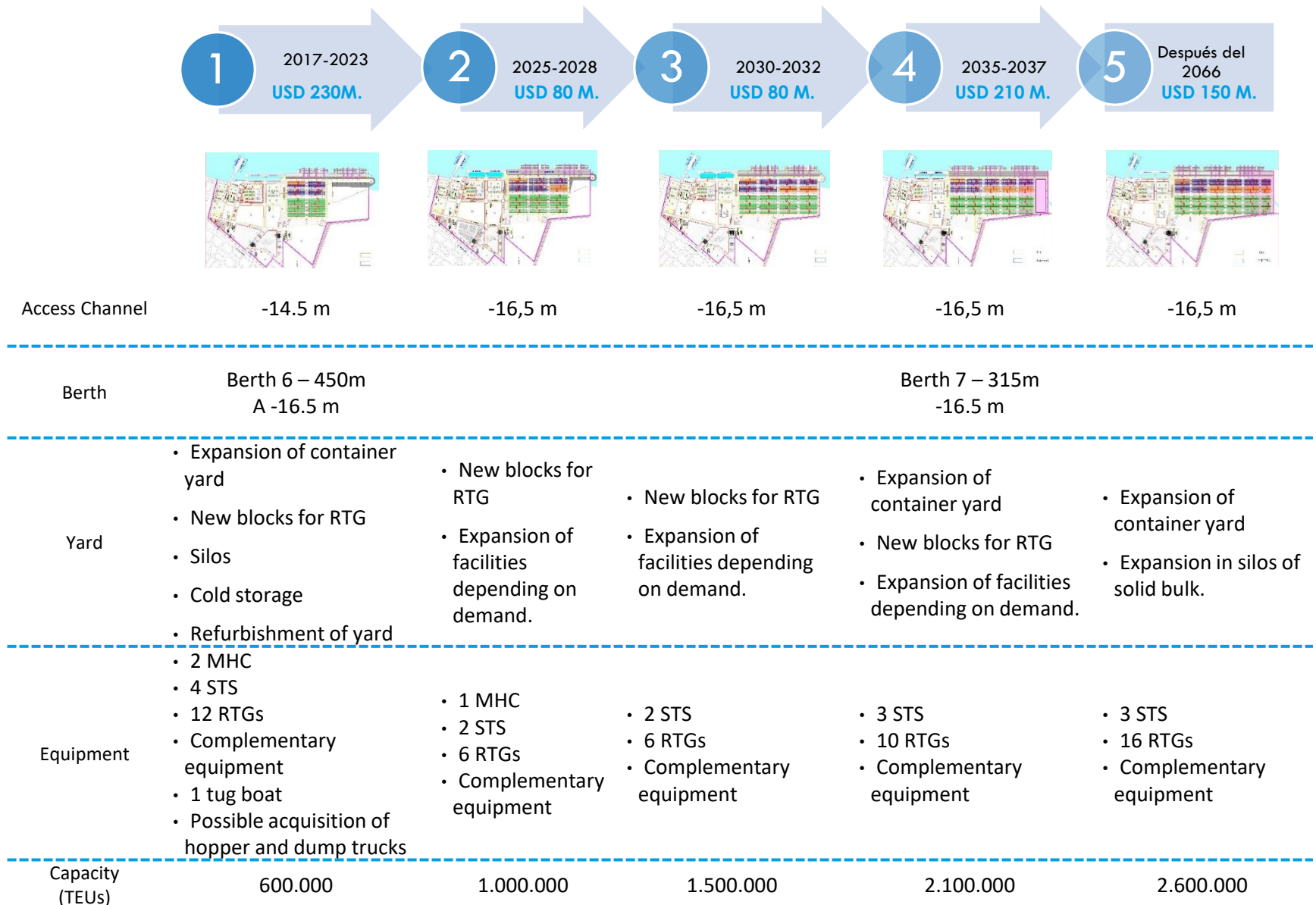
### 50 years of Container Ship Growth



Graphic: Allianz Global Corporate & Specialty.

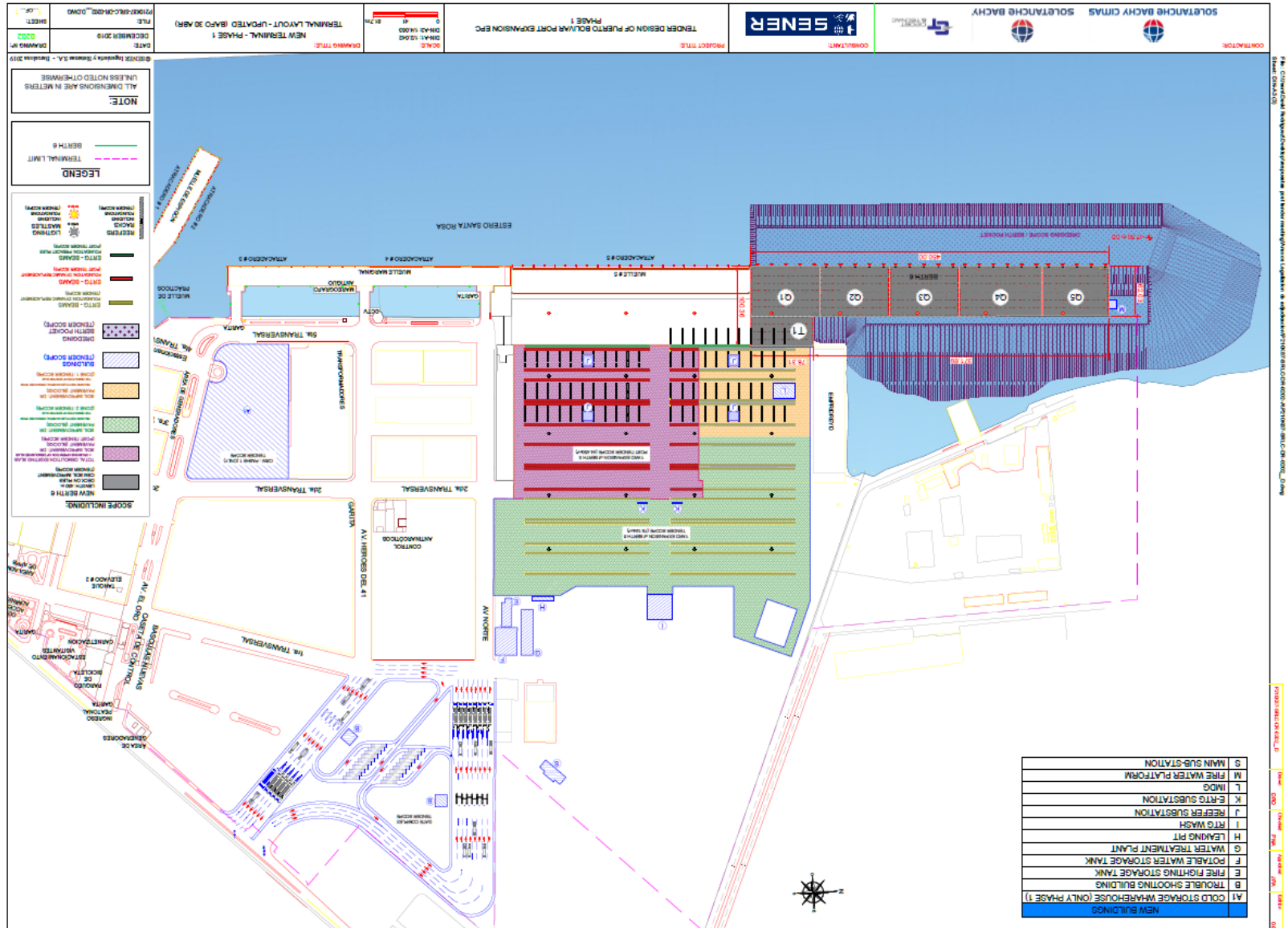
Approximate ship capacity data: Container-transportation.com

# Overall Puerto Bolivar Project Expansion (Contractual)





- Berth #6 Construction



- Access Channel

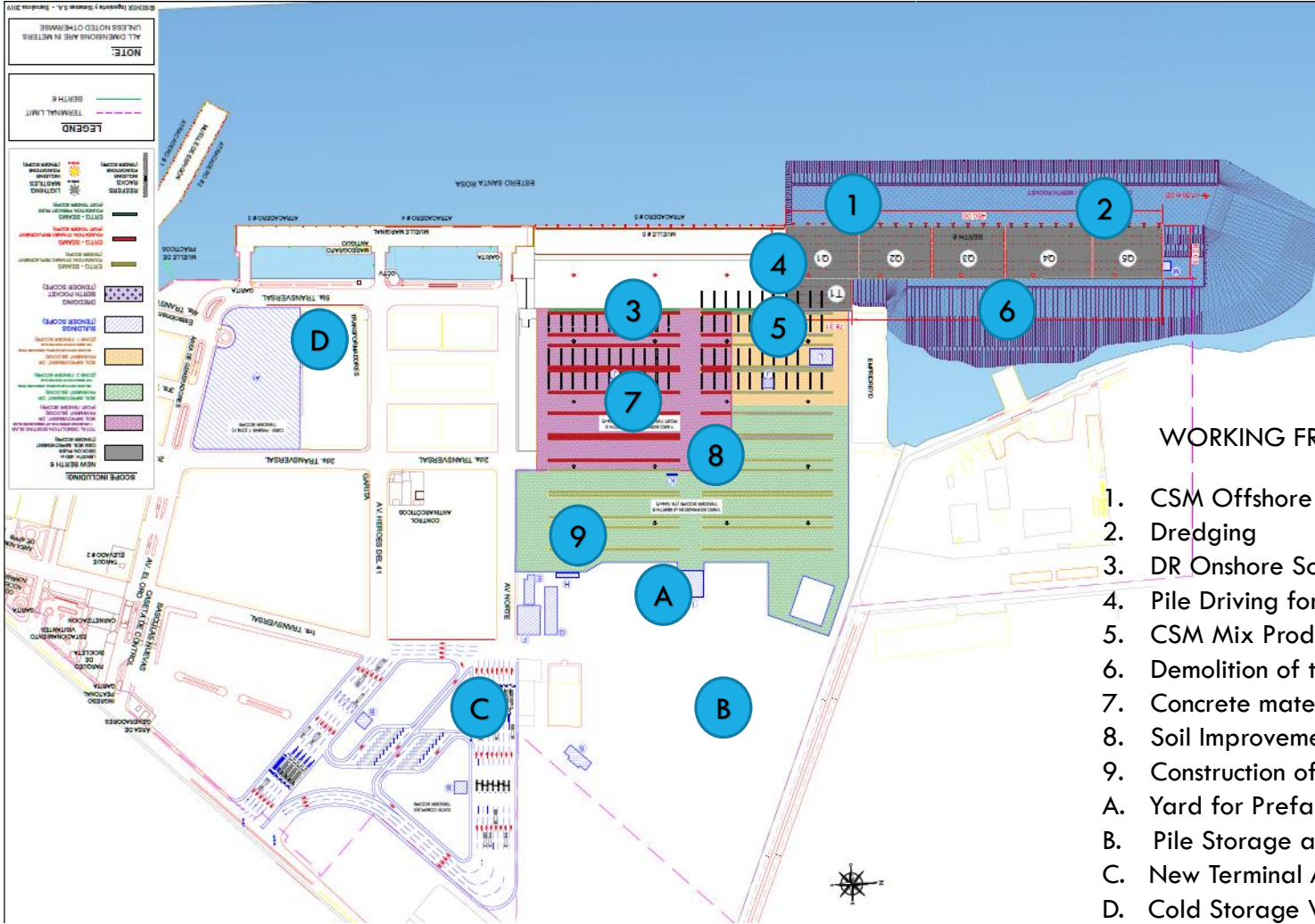
## ACCESS TO PUERTO BOLIVAR

Access Channel and maneuvering  
area to be dredged to

- 14.5 m on Phase 1
- 16.5 m on Phase 2



1. **LEGEND**  
 2. **LEGEND**  
 3. **LEGEND**  
 4. **LEGEND**  
 5. **LEGEND**  
 6. **LEGEND**  
 7. **LEGEND**  
 8. **LEGEND**  
 9. **LEGEND**  
 10. **LEGEND**  
 11. **LEGEND**  
 12. **LEGEND**  
 13. **LEGEND**  
 14. **LEGEND**  
 15. **LEGEND**  
 16. **LEGEND**  
 17. **LEGEND**  
 18. **LEGEND**  
 19. **LEGEND**  
 20. **LEGEND**  
 21. **LEGEND**  
 22. **LEGEND**  
 23. **LEGEND**  
 24. **LEGEND**  
 25. **LEGEND**  
 26. **LEGEND**  
 27. **LEGEND**  
 28. **LEGEND**  
 29. **LEGEND**  
 30. **LEGEND**  
 31. **LEGEND**  
 32. **LEGEND**  
 33. **LEGEND**  
 34. **LEGEND**  
 35. **LEGEND**  
 36. **LEGEND**  
 37. **LEGEND**  
 38. **LEGEND**  
 39. **LEGEND**  
 40. **LEGEND**  
 41. **LEGEND**  
 42. **LEGEND**  
 43. **LEGEND**  
 44. **LEGEND**  
 45. **LEGEND**  
 46. **LEGEND**  
 47. **LEGEND**  
 48. **LEGEND**  
 49. **LEGEND**  
 50. **LEGEND**  
 51. **LEGEND**  
 52. **LEGEND**  
 53. **LEGEND**  
 54. **LEGEND**  
 55. **LEGEND**  
 56. **LEGEND**  
 57. **LEGEND**  
 58. **LEGEND**  
 59. **LEGEND**  
 60. **LEGEND**  
 61. **LEGEND**  
 62. **LEGEND**  
 63. **LEGEND**  
 64. **LEGEND**  
 65. **LEGEND**  
 66. **LEGEND**  
 67. **LEGEND**  
 68. **LEGEND**  
 69. **LEGEND**  
 70. **LEGEND**  
 71. **LEGEND**  
 72. **LEGEND**  
 73. **LEGEND**  
 74. **LEGEND**  
 75. **LEGEND**  
 76. **LEGEND**  
 77. **LEGEND**  
 78. **LEGEND**  
 79. **LEGEND**  
 80. **LEGEND**  
 81. **LEGEND**  
 82. **LEGEND**  
 83. **LEGEND**  
 84. **LEGEND**  
 85. **LEGEND**  
 86. **LEGEND**  
 87. **LEGEND**  
 88. **LEGEND**  
 89. **LEGEND**  
 90. **LEGEND**  
 91. **LEGEND**  
 92. **LEGEND**  
 93. **LEGEND**  
 94. **LEGEND**  
 95. **LEGEND**  
 96. **LEGEND**  
 97. **LEGEND**  
 98. **LEGEND**  
 99. **LEGEND**  
 100. **LEGEND**  
 101. **LEGEND**  
 102. **LEGEND**  
 103. **LEGEND**  
 104. **LEGEND**  
 105. **LEGEND**  
 106. **LEGEND**  
 107. **LEGEND**  
 108. **LEGEND**  
 109. **LEGEND**  
 110. **LEGEND**  
 111. **LEGEND**  
 112. **LEGEND**  
 113. **LEGEND**  
 114. **LEGEND**  
 115. **LEGEND**  
 116. **LEGEND**  
 117. **LEGEND**  
 118. **LEGEND**  
 119. **LEGEND**  
 120. **LEGEND**  
 121. **LEGEND**  
 122. **LEGEND**  
 123. **LEGEND**  
 124. **LEGEND**  
 125. **LEGEND**  
 126. **LEGEND**  
 127. **LEGEND**  
 128. **LEGEND**  
 129. **LEGEND**  
 130. **LEGEND**  
 131. **LEGEND**  
 132. **LEGEND**  
 133. **LEGEND**  
 134. **LEGEND**  
 135. **LEGEND**  
 136. **LEGEND**  
 137. **LEGEND**  
 138. **LEGEND**  
 139. **LEGEND**  
 140. **LEGEND**  
 141. **LEGEND**  
 142. **LEGEND**  
 143. **LEGEND**  
 144. **LEGEND**  
 145. **LEGEND**  
 146. **LEGEND**  
 147. **LEGEND**  
 148. **LEGEND**  
 149. **LEGEND**  
 150. **LEGEND**  
 151. **LEGEND**  
 152. **LEGEND**  
 153. **LEGEND**  
 154. **LEGEND**  
 155. **LEGEND**  
 156. **LEGEND**  
 157. **LEGEND**  
 158. **LEGEND**  
 159. **LEGEND**  
 160. **LEGEND**  
 161. **LEGEND**  
 162. **LEGEND**  
 163. **LEGEND**  
 164. **LEGEND**  
 165. **LEGEND**  
 166. **LEGEND**  
 167. **LEGEND**  
 168. **LEGEND**  
 169. **LEGEND**  
 170. **LEGEND**  
 171. **LEGEND**  
 172. **LEGEND**  
 173. **LEGEND**  
 174. **LEGEND**  
 175. **LEGEND**  
 176. **LEGEND**  
 177. **LEGEND**  
 178. **LEGEND**  
 179. **LEGEND**  
 180. **LEGEND**  
 181. **LEGEND**  
 182. **LEGEND**  
 183. **LEGEND**  
 184. **LEGEND**  
 185. **LEGEND**  
 186. **LEGEND**  
 187. **LEGEND**  
 188. **LEGEND**  
 189. **LEGEND**  
 190. **LEGEND**  
 191. **LEGEND**  
 192. **LEGEND**  
 193. **LEGEND**  
 194. **LEGEND**  
 195. **LEGEND**  
 196. **LEGEND**  
 197. **LEGEND**  
 198. **LEGEND**  
 199. **LEGEND**  
 200. **LEGEND**  
 201. **LEGEND**  
 202. **LEGEND**  
 203. **LEGEND**  
 204. **LEGEND**  
 205. **LEGEND**  
 206. **LEGEND**  
 207. **LEGEND**  
 208. **LEGEND**  
 209. **LEGEND**  
 210. **LEGEND**  
 211. **LEGEND**  
 212. **LEGEND**  
 213. **LEGEND**  
 214. **LEGEND**  
 215. **LEGEND**  
 216. **LEGEND**  
 217. **LEGEND**  
 218. **LEGEND**  
 219. **LEGEND**  
 220. **LEGEND**  
 221. **LEGEND**  
 222. **LEGEND**  
 223. **LEGEND**  
 224. **LEGEND**  
 225. **LEGEND**  
 226. **LEGEND**  
 227. **LEGEND**  
 228. **LEGEND**  
 229. **LEGEND**  
 230. **LEGEND**  
 231. **LEGEND**  
 232. **LEGEND**  
 233. **LEGEND**  
 234. **LEGEND**  
 235. **LEGEND**  
 236. **LEGEND**  
 237. **LEGEND**  
 238. **LEGEND**  
 239. **LEGEND**  
 240. **LEGEND**  
 241. **LEGEND**  
 242. **LEGEND**  
 243. **LEGEND**  
 244. **LEGEND**  
 245. **LEGEND**  
 246. **LEGEND**  
 247. **LEGEND**



1. CSM Offshore Soil Improvement
2. Dredging
3. DR Onshore Soil Improvement
4. Pile Driving for Berth #6
5. CSM Mix Production Plant
6. Demolition of the Finger Pier
7. Concrete material crushing
8. Soil Improvement on the Yard
9. Construction of Utilities Networks
  - A. Yard for Prefabricated Elements
  - B. Pile Storage and Preparation
  - C. New Terminal Access/Gates system
  - D. Cold Storage Warehouse (CSW)

THANK YOU