

# ACCELERATING MALAYSIA'S ECONOMIC RECOVERY THROUGH RESILIENT PORT AND LOGISTIC SECTOR



**CAPT. K. SUBRAMANIAM,  
GENERAL MANAGER,  
PORT KLANG AUTHORITY**



## MALAYSIA HAS CONSTRUCTED OVER

**200,000 KM**  
ROADS

**2,900 KM**  
RAILS

**18**  
PORTS

**22**  
AIRPORTS

## POPULATION

**32.73 mil** - Population of Malaysia on 2020 (1<sup>st</sup> Quarter)

Population Projections for Malaysia by 2040

Decreasing growth rate

2010  
**28.3**  
million

2040  
**41.5**  
million

Malaysia's population  
**INCREASED** by  
**13.2 million**  
people for a period of 30 years

1.8%  
2010  
0.8%  
2040  
Annual population growth rate in 2010 and 2040

## TRADE

<b>2018</b>	IMPORT	RM879.80bil
	EXPORT	RM1,003.59bil
<b>2019</b>	IMPORT	RM849.01bil
	EXPORT	RM986.40bil
<b>2020 Until May</b>	IMPORT	RM322.41bil
	EXPORT	RM366.16bil

## ECONOMY

For the 1st quarter of 2020, Malaysia's GDP grew **0.7** per cent.

## WORLD-CLASS FACILITIES & INFRASTRUCTURE



## CONTAINER WORLD PORT RANKING 2019- 12<sup>TH</sup>

### COUNTRY RANKING 5<sup>th</sup>

RANK	COUNTRY	TOTAL TEUs
1	CHINA	225.8M
2	UNITED STATES	54.7M
3	SINGAPORE	36.6M
4	R.O.KOREA	28.9M
5	MALAYSIA	24.9M

## STATE OF THE ART FACILITIES



# PORT KLANG

ASIA'S PREFERRED LOGISTICS HUB

CONTAINER QUAY LENGTH  
WESTPORTS **5.8 km** NORTHPORT **3.0 km**

## MULTIPURPOSE PORT



TOTAL MALAYSIA VOLUME 2019  
**25.7mil Teus**

13.58 Million TEUs Total throughput In 2019

19.6 Million TEUs annual capacity

35 Moves per hour average

## CONNECTIVITY

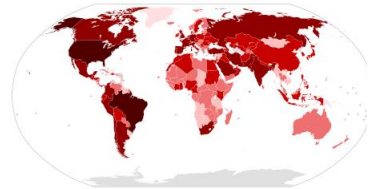
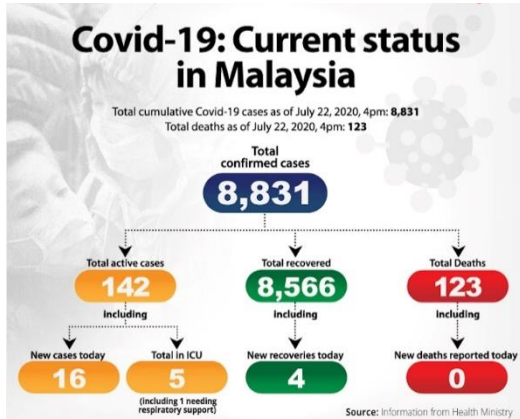
350 Ports over 130 countries connected to Port Klang

30 Main Line operators call at Port Klang



## PERFECTLY POSITIONED

World's Busiest Sea Lane with 80,000 vessels passing through annually  
**90%** Malaysia's Cargo handled through sea  
**50%** Nation's Cargo handled through Port Klang



Confirmed **15,008,046**      Death **617,902**

#### Impact on GDP

Bank Negara Malaysia predicts GDP to be at the range of **-2.0% and 0.5%**

Value of GDP losses relative to the projected 2020 is estimated to be in the range of **RM38 billion and RM102 billion**

- Industrial output is estimated to reduce between **40% and 70%** during MCO.
- A projected **negative growth of -8.6%** of the manufacturing sector

### IMPACT TO THE PORT & LOGISTIC

Tourism		Logistics	
<p><b>Contribution to GDP: RM86 billion</b></p> <p><b>6.1%</b> of the national GDP of RM1.4 trillion</p>	<p><b>Contribution to GDP: RM57 billion</b></p> <p><b>4.1%</b> of the national GDP of RM1.4 trillion</p>	<p><b>Employment</b></p> <p><b>437,926</b> (Figures from DOSM, 2017)</p> <p>Drivers and operators (such as equipment operators, clerical staffers)</p>	<p><b>Financial</b></p> <p>Potential losses of <b>RM1 billion</b> in revenue. <i>*Based on engagements with major logistics players</i></p>
<p><b>Employment</b></p> <ul style="list-style-type: none"> <li>Total jobs of approximately 56,000 in hotel services.</li> <li>Potential job losses of up to 10% by June 2020.</li> </ul>	<p><b>Financial</b></p> <ul style="list-style-type: none"> <li>Potential losses of <b>RM3.3 billion</b> in revenue by June 2020.</li> </ul>		
<p>Source: Malaysian Association of Hotels (MAH)</p>		<p>Source: DOSM and Engagements with Major Logistics Players</p>	

# NATIONAL TRANSPORT POLICY 2019-2030

THE VISION OF THE NTP 2019-2030 IS ANCHORED ON  
THE PRINCIPLES OF SUSTAINABLE TRANSPORT

## Three principles of the Vision

### Economic competitiveness

- Ensuring seamless connectivity and movement as an enable for other economic activities
- Delivering reliable, efficient, affordable and high quality service
- Developing skilled human capital
- Nurturing global players in the transport sector

### Social impact

- Ensuring inclusivity and accessibility of transport services
- Improving safety and security of transport services
- Involving public participation/ stakeholders engagement in the development of transport initiatives

### Environmental impact

- Reducing fuel consumption and GHG emission/pollution control
- Promoting environmental protection and conservation
- Encouraging sustainable consumption and production

## 6 STRATEGIES



Implement smarter and more efficient use of existing infrastructure and in developing new infrastructure



Increase the utilisation of rail service for passengers and goods



Upgrade hinterland connectivity to gateways & connect corridors for economic distribution



Reinforce maintenance regime of transport infrastructure



Enhance competitiveness in air cargo operation



Modernise integrated logistics to reduce cost of doing business

# SHORT TERM STRATEGIES TO STIMULATE PORT & LOGISTIC SECTOR

Financial Incentives by Port Authority

To Waive Permit & Fee Imposed By Other Government Agencies

To enhance Infrastructure capacity i.e Road Link at Port

Additional Free Storage Period

To embrace seamless connectivity through digitalization at Port

Commercial Incentives & Strategies Package from Terminal Operators to Shipping, Importers & Exporters.



**-THANK YOU-**

**#STAYSAFE #KITAJAGAKITA**

