

# CURRENT CHALLENGES AND FUTURE OPPORTUNITIES FOR PORTS AND SHIPPING IN BIMP-EAGA

ANALEE G. AGUILA  
PHILIPPINE PORTS AUTHORITY



Other  
Gov't  
Ports

D

PHILIPPINE  
PORTS  
AUTHORITY



A

25 Baseports

B

83 Terminal  
Ports

C

Private  
Ports

PHILIPPINE  
PORTS  
AUTHORITY



*Reliable &*

*Responsive*

Port  
Services  
Nationwide





Other  
Gov't  
Ports

D

PHILIPPINE  
PORTS  
AUTHORITY



A

25 Baseports

B

83 Terminal  
Ports

C

Private  
Ports

BIMP-EAGA  
PORTS

- Davao
- General Santos
- Zamboaga
- Jolo
- Puerto Princesa
- Cagayan de Oro
- Iligan
- Nasipit
- Surigao
- Ozamis

PHILIPPINE  
PORTS  
AUTHORITY



*Reliable &  
Responsive*

**Port  
Services  
Nationwide**

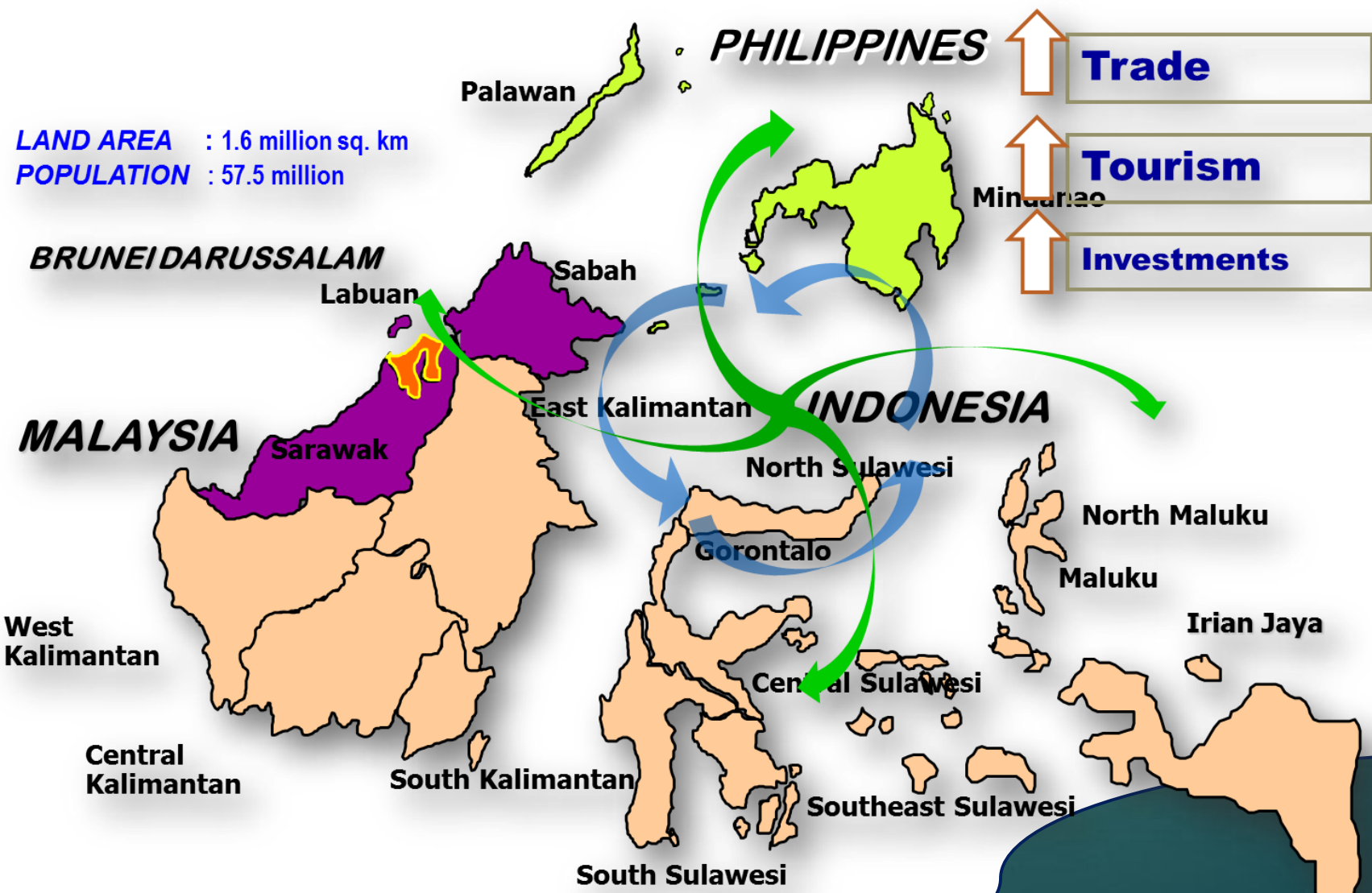




PHILIPPINE  
PORTS  
AUTHORITY



LAND AREA : 1.6 million sq. km  
POPULATION : 57.5 million



*Reliable &  
Responsive*  
**Port  
Services  
Nationwide**



PHILIPPINE  
PORTS  
AUTHORITY



*Reliable &  
Responsive*  
**Port  
Services  
Nationwide**



# CHALLENGES

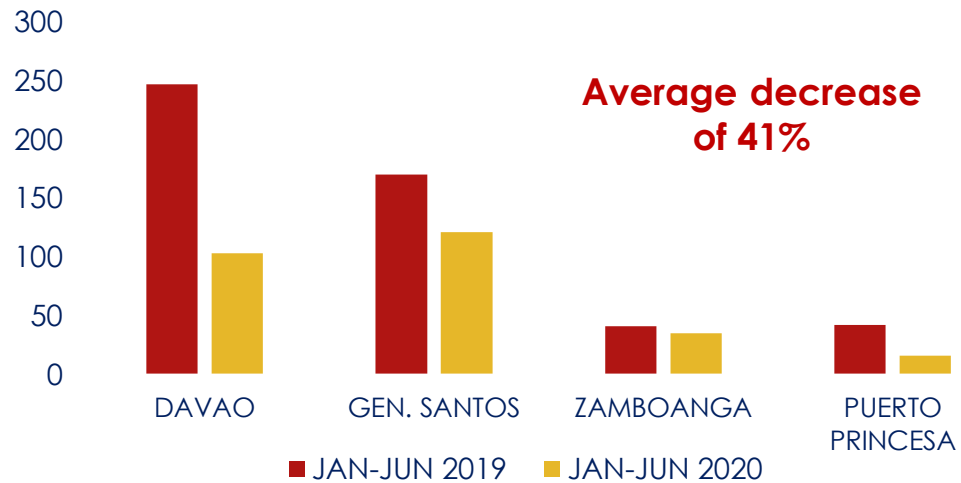
With Port Restrictions



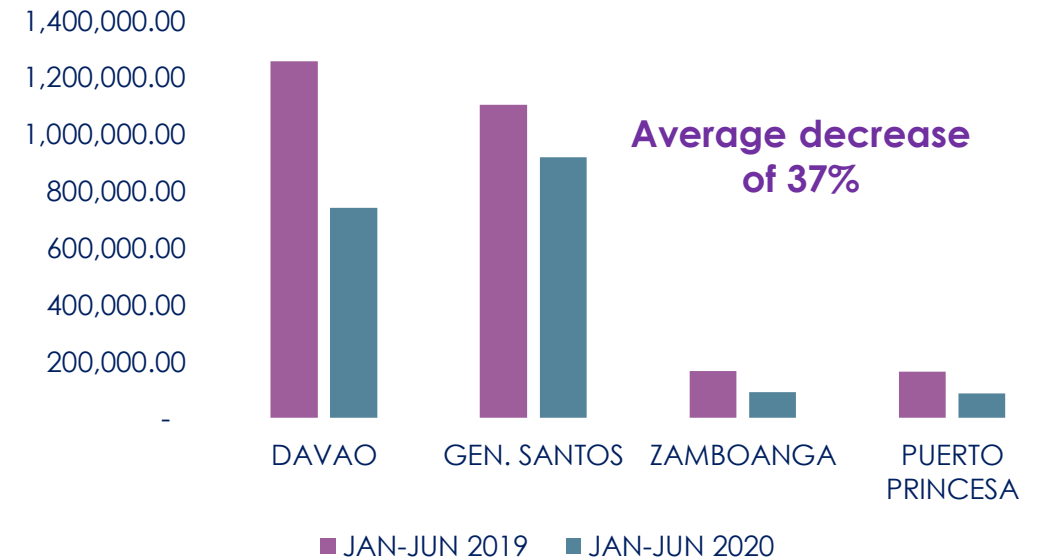


# CHALLENGES

FOREIGN SHIPCALL  
Jan-Jun 2019 vs Jan-Jun 2020



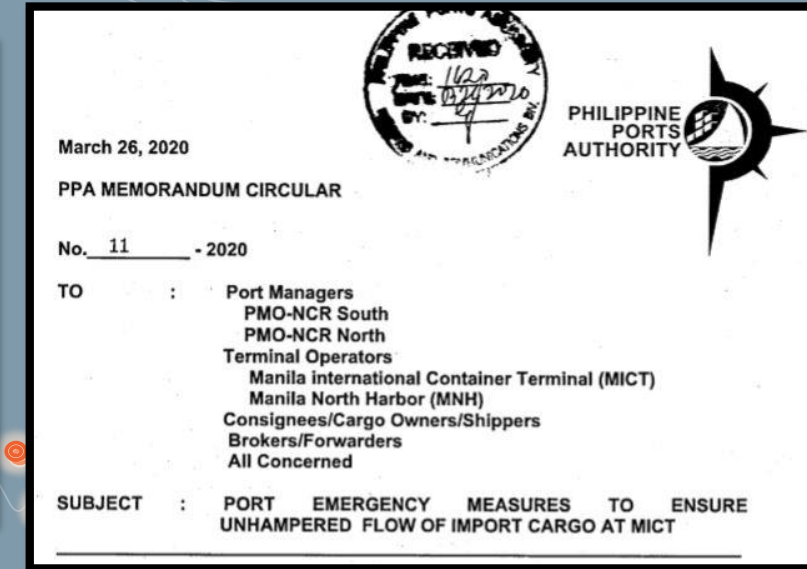
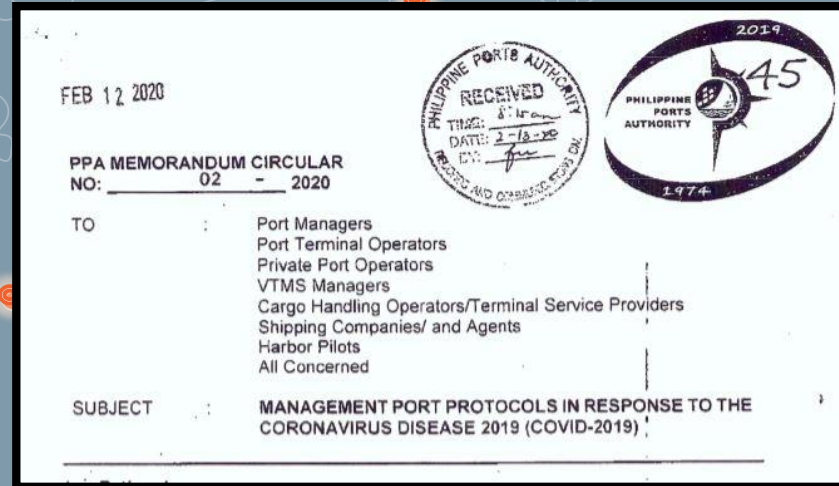
FOREIGN CARGO THROUGHPUT in MT  
Jan-Jun 2019 vs Jan-Jun 2020



## Covid-19 Pandemic

- Decrease in vessel traffic and Cargo volume
- Budget Crunch

# CHALLENGES



## Covid-19 Pandemic

- Decrease in vessel traffic and Cargo volume
- Budget Crunch



# CHALLENGES

## [REPUBLIC ACT NO. 8506]

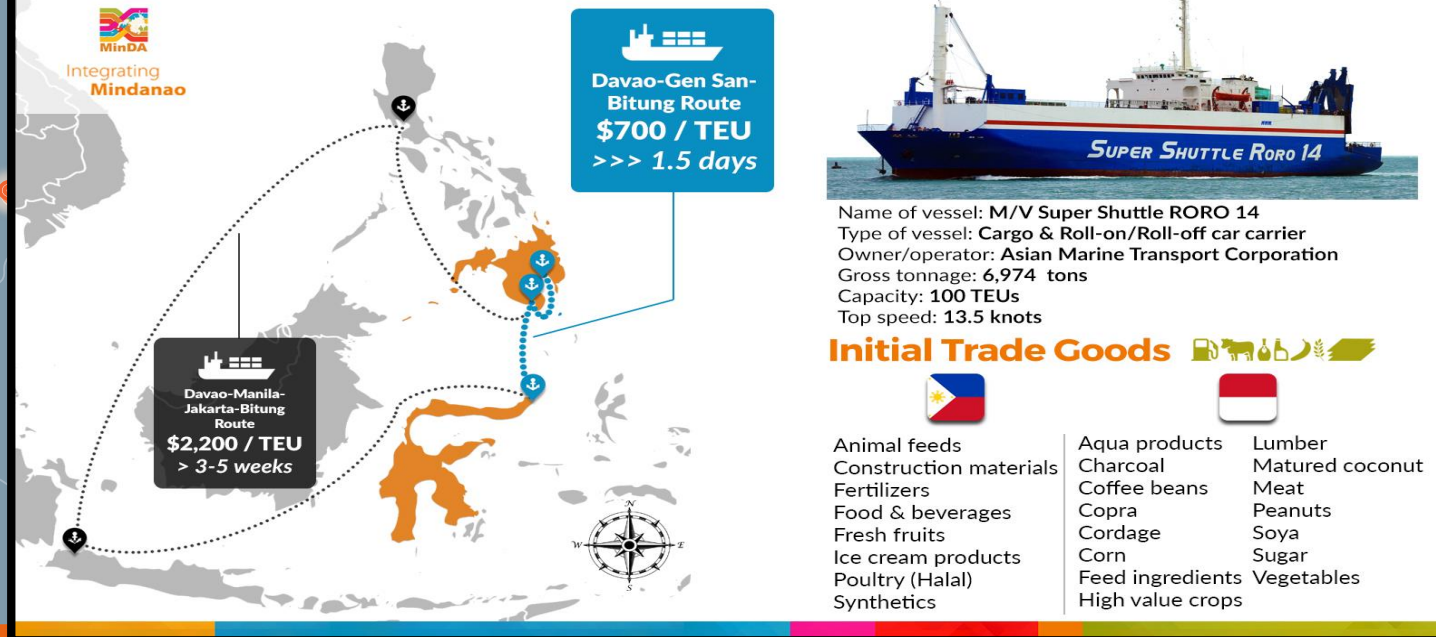
AN ACT BANNING THE REGISTRATION AND OPERATION OF VEHICLES WITH RIGHT-HAND STEERING WHEEL IN ANY PRIVATE OR PUBLIC STREET, ROAD OR HIGHWAY, PROVIDING PENALTIES THEREFOR AND FOR OTHER PURPOSES

*Be it enacted by the Senate and House of Representatives of the Philippines in Congress assembled:*

SECTION 1. It shall be unlawful for any person to import, cause the importation of register cause the registration of, use, or operate any vehicle with its steering wheel right-hand side thereof in any highway, street or road, whether private or public or of the national or local government except such vehicles that are acknowledge as vintage automobiles, manufactured before 1960, in showroom condition, and/or are to be utilized exclusively for officially and legally sanctioned motorsports events, and off-road special purpose vehicles.

## Davao-General Santos-Bitung Shipping Route

New shipping route within the East ASEAN Growth Area to spur trading between **Indonesia** and the **Philippines**



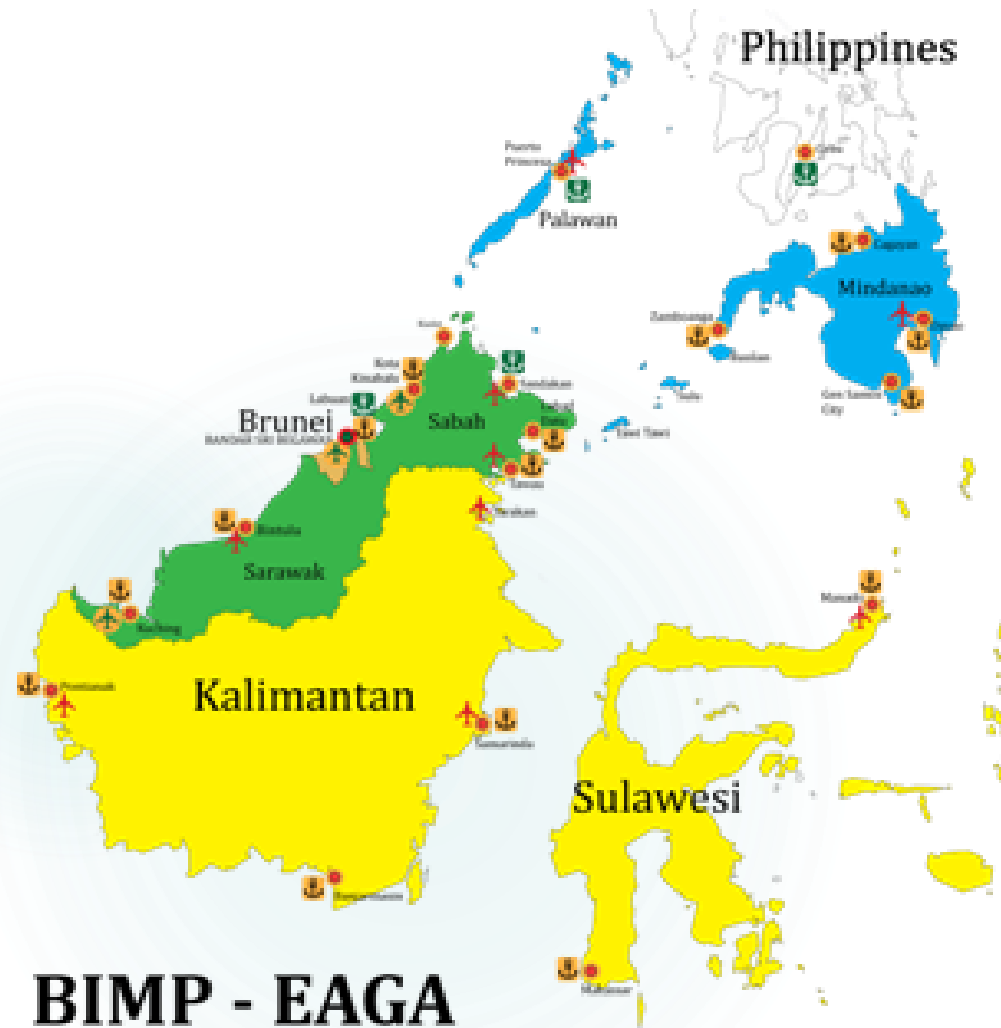
## Facilitation of Trade

- Operationalization of Davao-GenSan-Bitung Shipping Route
- RoRo Connections- concerning Right-Hand-Drive vehicles

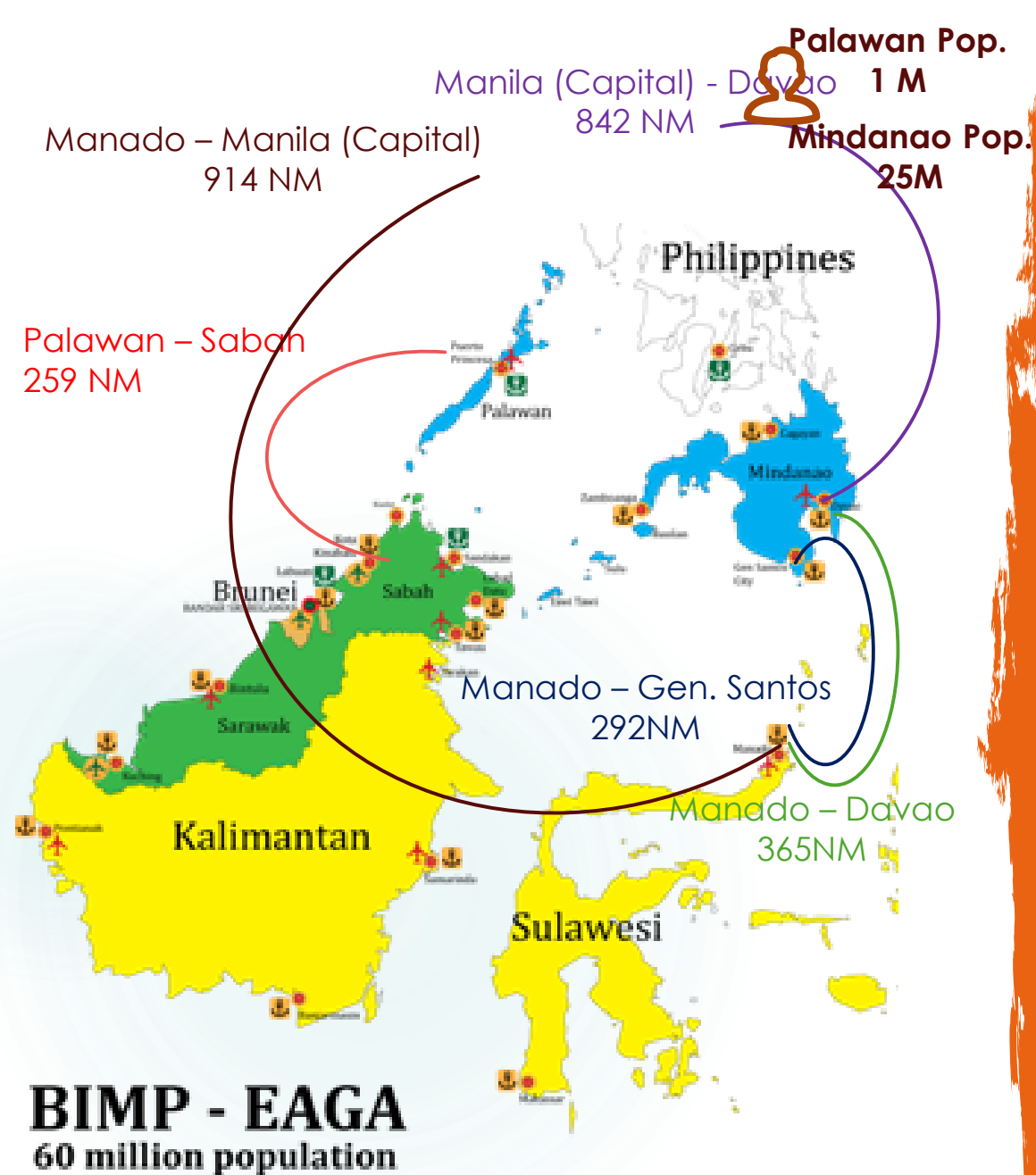
Palawan Pop.  
1 M  
Mindanao Pop.  
25M

# OPPORTUNITIES

1. Mindanao and Palawan
  - Population



**BIMP - EAGA**  
60 million population



# OPPORTUNITIES

1. Mindanao and Palawan
  - Population
  - Geographical Advantage



# OPPORTUNITIES

## 1. Mindanao and Palawan

- Population
- Geographical Advantage
- Products/ services (Natural Resources)



PHILIPPINE  
PORTS  
AUTHORITY



PPA ePayment Portal



Select Site

Baseport Davao

✓ Select Transaction -  
Vessel CS  
Cargo CS  
Accreditation  
PTO

ONLINE SERVICES OFFERED BY PPA



PPA e-Payment  
Portal



# OPPORTUNITIES

1. Mindanao and Palawan
  - Population
  - Geographical Advantage
  - Products/ services (Natural Resources)
2. Ease of Doing Business
  - Electronic Processing Systems (E-Portal)
    - Electronic Payment Portal
    - Electronic Permit Management System
    - Electronic Accreditation System
    - Automated Ticketing System



PHILIPPINE  
PORTS  
AUTHORITY



PPA ePayment Portal



Select Site

Baseport Davao

✓ Select Transaction -  
Vessel CS  
Cargo CS  
Accreditation  
PTO

ONLINE SERVICES OFFERED BY PPA



PPA e-Payment  
Portal



# OPPORTUNITIES

1. Mindanao and Palawan
  - Population
  - Geographical Advantage
  - Products/ services (Natural Resources)
2. Ease of Doing Business
  - Electronic Processing Systems (E-Portal)
    - Electronic Payment Portal
    - Electronic Permit Management System
    - Electronic Accreditation System
    - Automated Ticketing System
  - Oplan Malasakit





PHILIPPINE  
PORTS  
AUTHORITY



PPA ePayment Portal



Select Site

Baseport Davao

Select Transaction -

- Vessel CS
- Cargo CS
- Accreditation
- PTO

ONLINE SERVICES OFFERED BY PPA



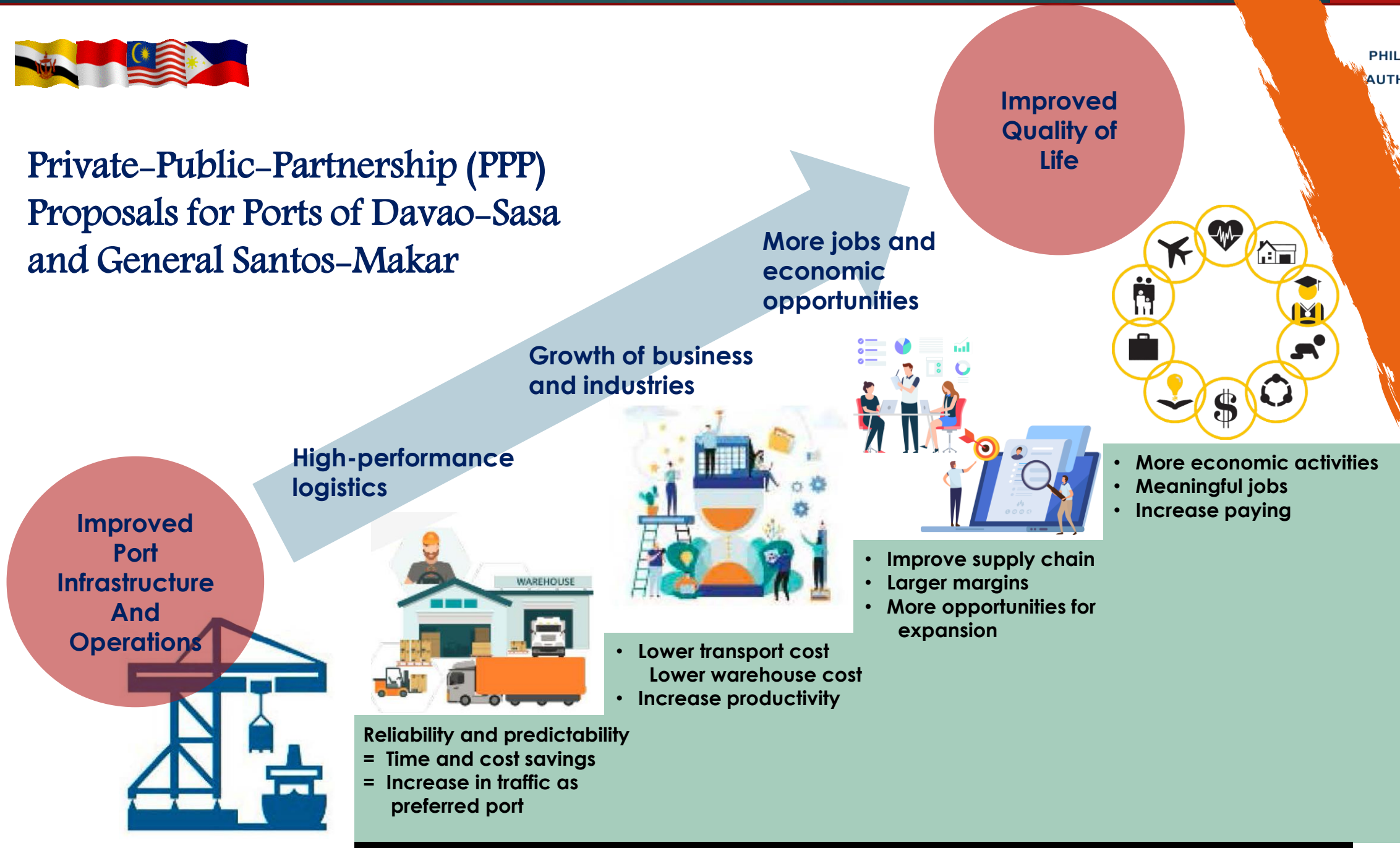
# OPPORTUNITIES

1. Mindanao and Palawan
  - Population
  - Geographical Advantage
  - Products/ services (Natural Resources)
2. Ease of Doing Business
  - Electronic Processing Systems (E-Portal)
    - Electronic Payment Portal
    - Electronic Permit Management System
    - Electronic Accreditation System
    - Automated Ticketing System
  - Oplan Malasakit
3. Private Public Partnership





# Private-Public-Partnership (PPP) Proposals for Ports of Davao-Sasa and General Santos-Makar



*Thank you...*

*If everyone is moving forward together,  
then success takes care of itself.... — Henry Ford*

