

WEBINAR

Sponsored by



Port Sustainability in East Africa and the Indian Ocean

Wednesday 28 April 2021

Marine environment and biodiversity monitoring: from the shallow to the deep

Ludovic Hoarau – PhD student – Marine Biologist
GPMDLR - Entropie

ludovic.hoarau@reunion.port.fr
ludovic-remy.hoarau@univ-reunion.fr



Port Reunion's Strategic Project

Natural Heritage Master Plan

- Inventories of terrestrial and marine diversity
- Surveys for assessing impacts port projects
- Action plan for biodiversity conservation



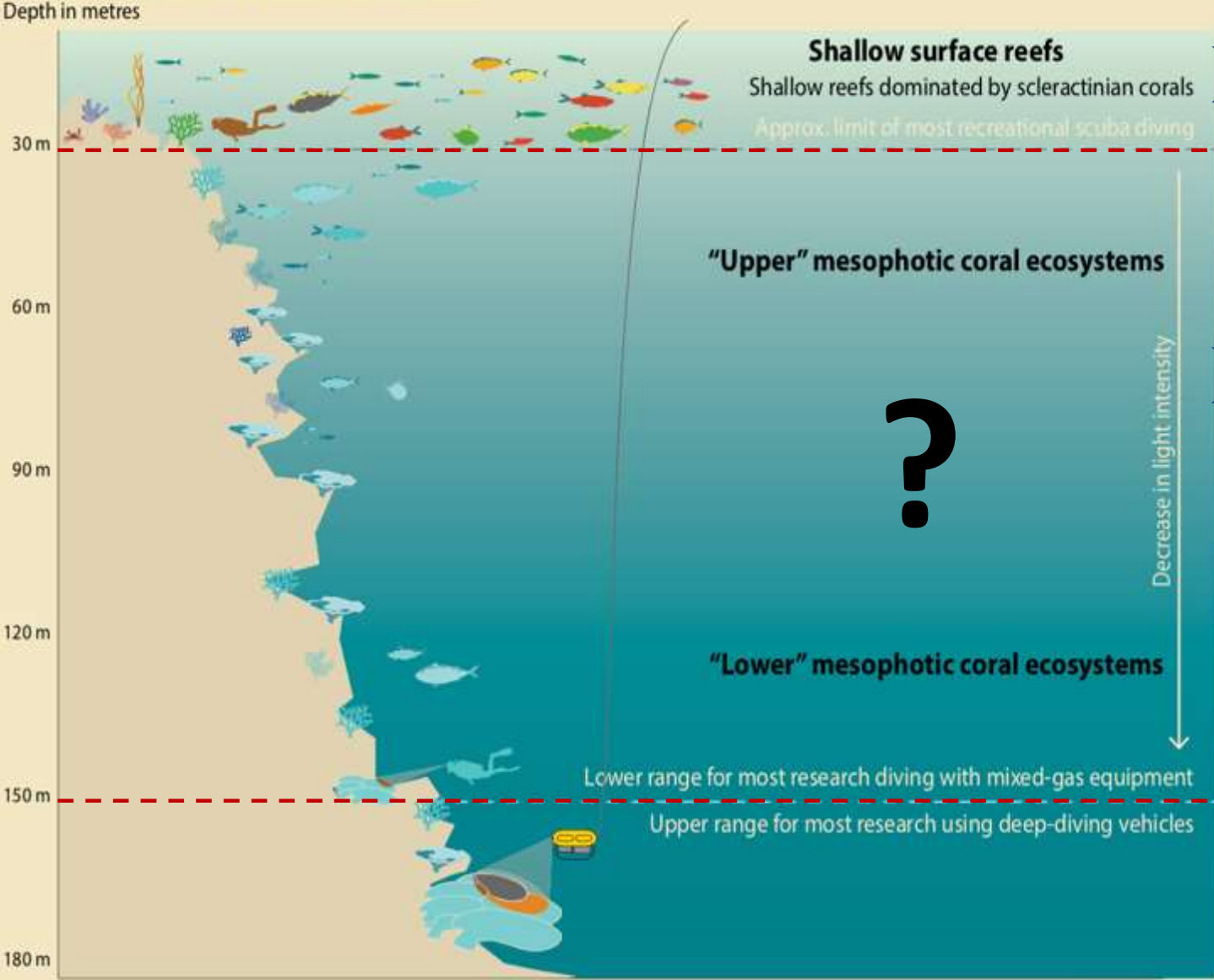
A voluntary environmental approach

Avoid

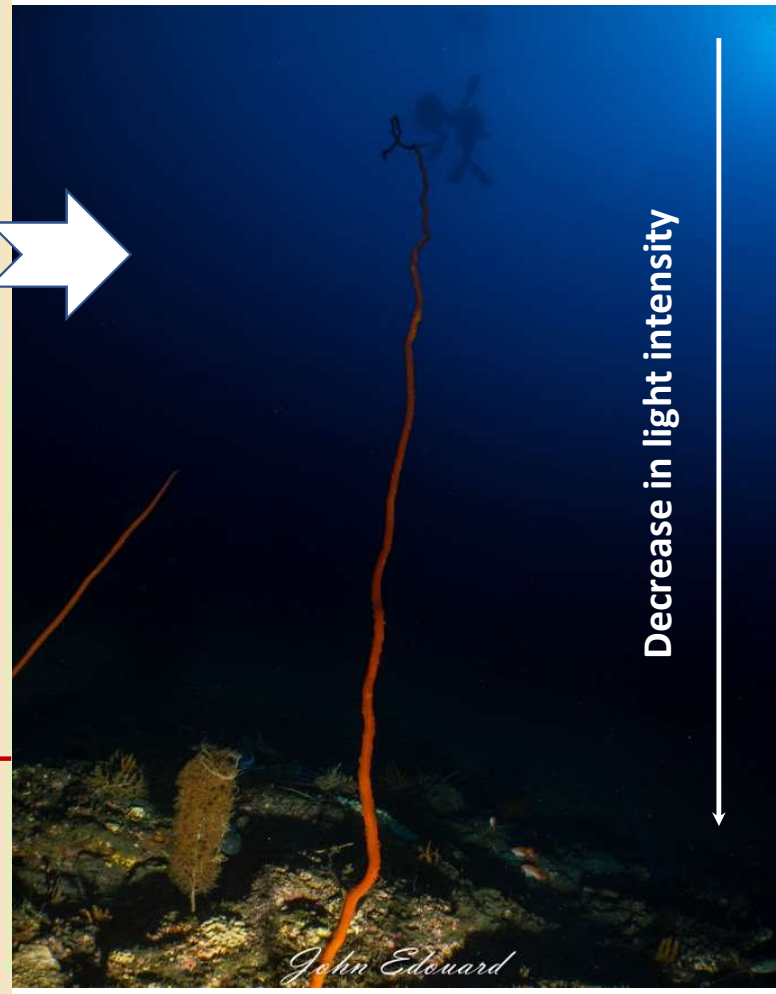
Reduce/Mitigate

Compensate

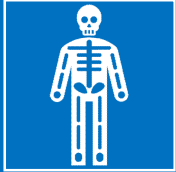
The mesophotic coral ecosystem



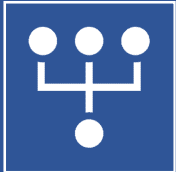
Source: Richard Pyle, unpublished data.



Mesophotic Coral Ecosystems (MCE): biodiversity & conservation



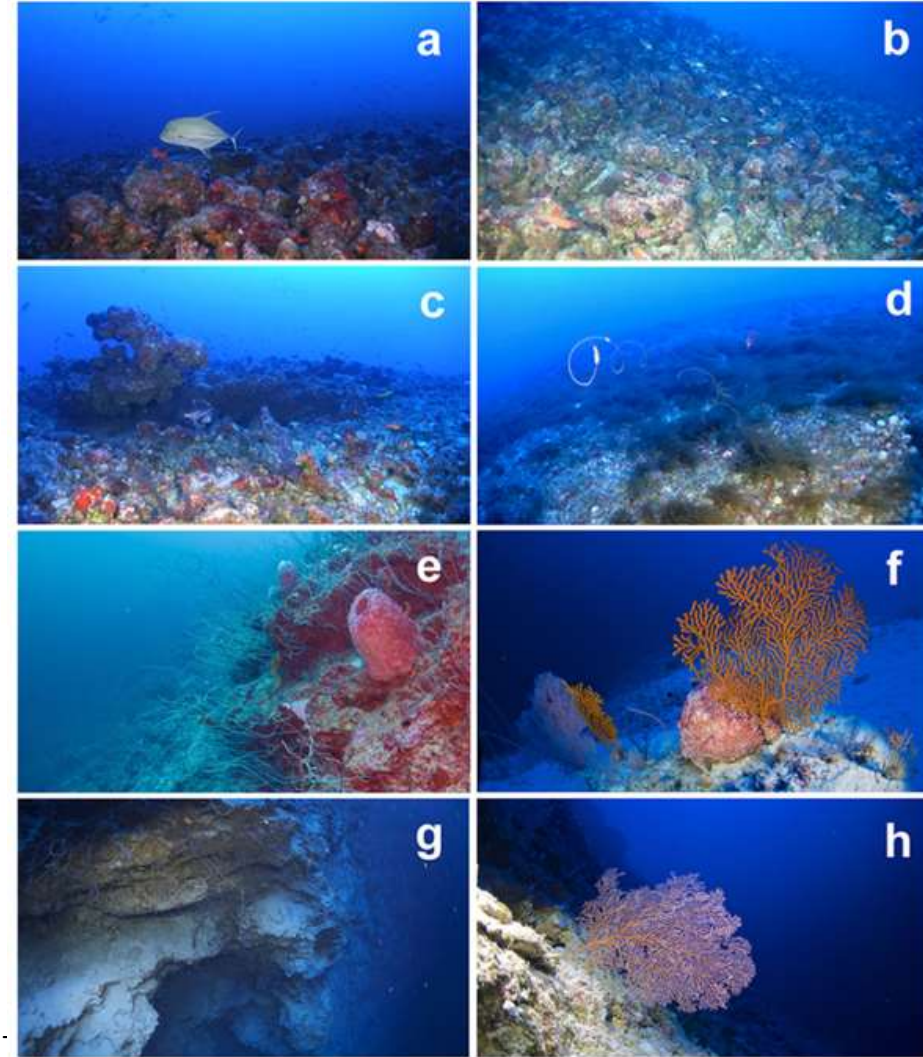
Habitats and communities
characterization of MCE (30–100 m)



Demography and population
dynamics of corals in MCE



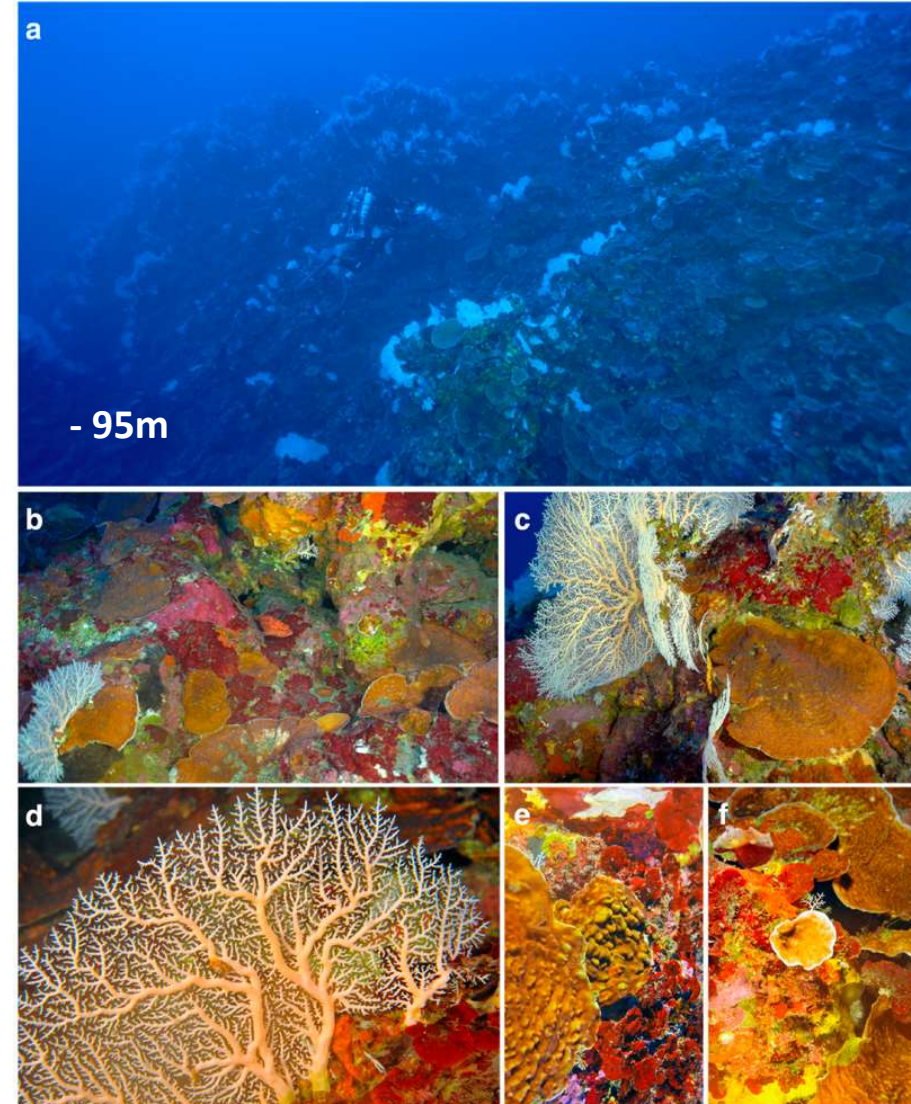
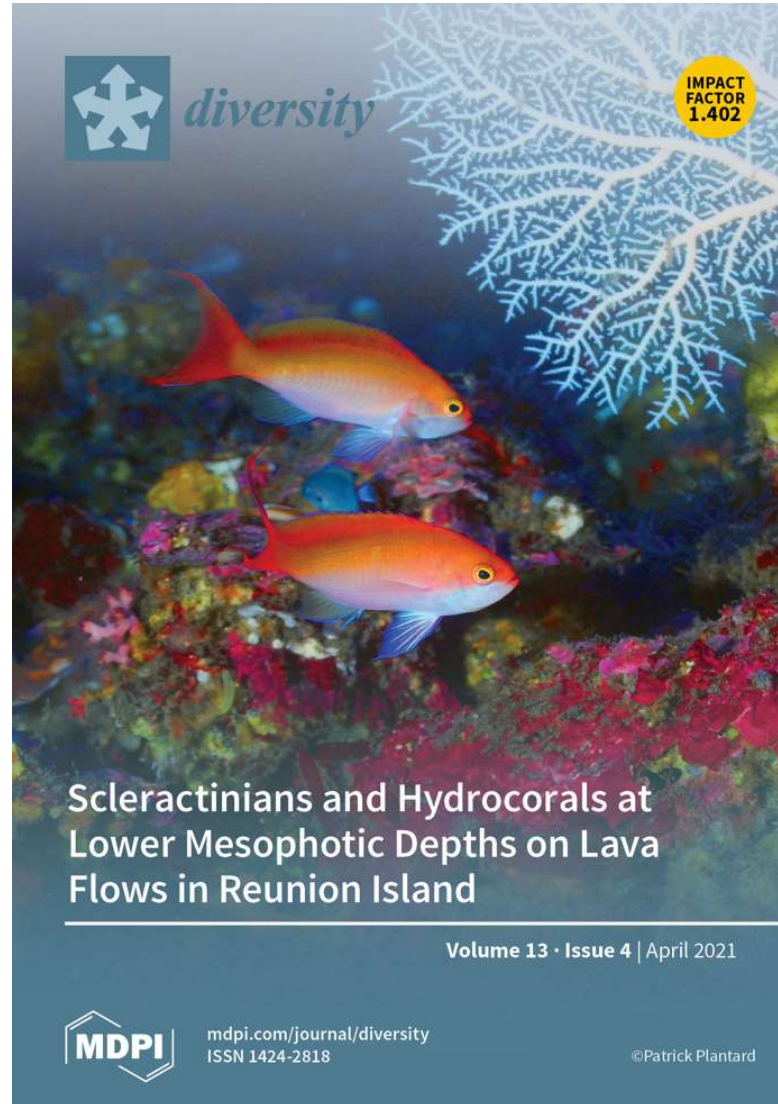
Action plan for a sustainable
management and conservation of
MCE in Reunion Island



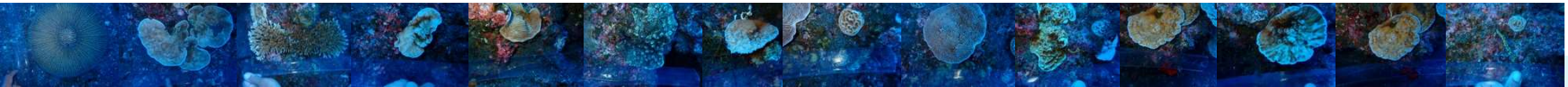
Pinheiro et al. 2016. Upper and lower mesophotic coral reef fish communities



- Le Port
- Sainte-Rose



Hoarau, L. et al. Unexplored Refugia with High Cover of Scleractinian *Leptoseris* spp. and Hydrocorals *Stylaster flabelliformis* at Lower Mesophotic Depths (75–100 m) on Lava Flows at Reunion Island (Southwestern Indian Ocean). *Diversity* **2021**, *13*, 141



Sustainability

Thank you

Studies
Environment

Sustainable Light Development

Sustainable Sustainability

Coral Marine Conservation

Mesophotic

Fish Mesophotic Corals

Environment

Resilience Marine Pollution

Ludovic Hoarau
GPMDLR - Entropie

ludovic.hoarau@reunion.port.fr
ludovic-remy.hoarau@univ-reunion.fr

Pollution Port Deep
biodiversity

Shallow Fish Port Coral
Deep

Shallow Studies

Corals biodiversity

Impacts

Antipatharian

Choose La Réunion 

