

# Port de Barcelona:

*Towards a more efficient and sustainable European logistics model:  
The role of Mediterranean ports*



**Port de Barcelona**

**Carles Mayol**  
Commercial Manager, Barcelona Port Authority



# Contents

**1**

**Global logistics trends and the new role of Mediterranean ports**

2

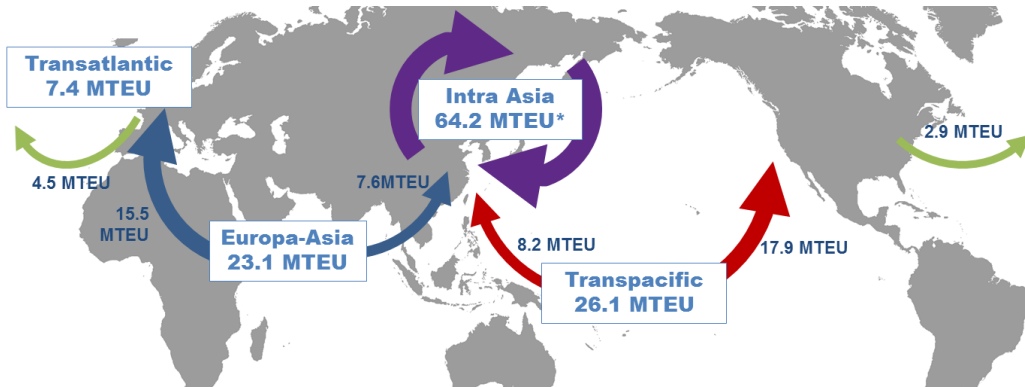
Why today intermodality is vital for a Port's strategy?

3

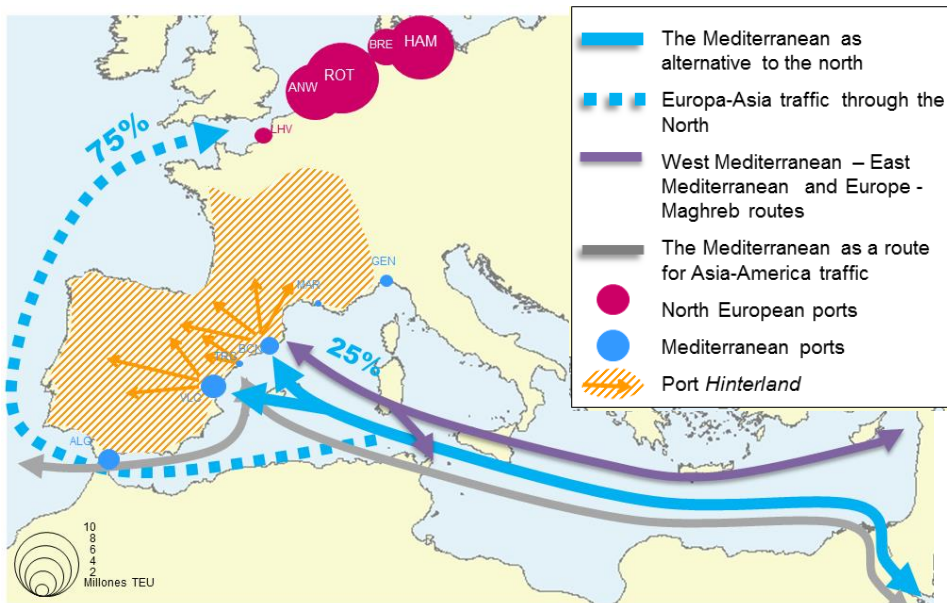
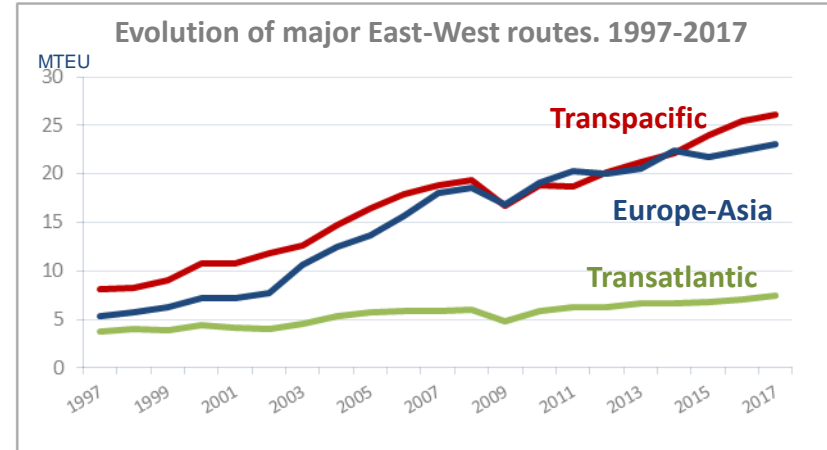
Present and future challenges



## The role of Mediterranean ports in a sustainable and more efficient logistics



Source: UNCTAD, Review of maritime transport 2017. \*Drewry Maritime Research 2017 (2016 Data)



### Advantages of Mediterranean ports:

- Reduction of navigation days, CO<sub>2</sub>&NO<sub>x</sub> emissions. Reduction of emissions up to 20% aprox in the Far East-Europe route
- Reduction of logistics costs
- Slows steaming: better transit time through the Mediterranean
- Reduction of congestion in Northern European infrastructures
- Take advantage of the Mediterranean and North and West African potential
- Improved infrastructures to berth the biggest containerships.



## What does BARCELONA offer as an Euro- Mediterranean distribution center?

### Biggest industrial & consumption in the MED & Southern Europe



### Distribution capacity to Europe/MED/Africa



### Logistics specialization

packaging REVERSE LOGISTICS specialised transport services  
E-FULFILMENT CLASSIFICATION  
JISGPS tracking GHS regulations  
AIR REAL-TIME INVENTORY SYSTEMS  
GROUPAGE IRONING SUPPLY  
supply chains handling and storage  
REPAIRS PICKING replacement  
TAPA security system DELIVERY AND CONSOLIDATION  
ACCESSORIES  
PDI handling of fragile goods  
WAREHOUSING security regulations  
CLP spare parts management  
VEHICLE PERSONALIZATION  
distribution transport on hangers  
delivery outlets CUSTOMER ORDERS RECEPTION

### An integrated logistics hub with port, airport and logistics facilities





# Contents

1

Global logistics trends and the new role of Mediterranean ports

2

**Why today intermodality is vital for a Port's strategy?**

3

Present and future challenges



## The Port of Barcelona's mission

**“ To contribute to the competitiveness of the customers of the Port by providing efficient services responding to their needs for maritime transport, land transport and logistics services ”**

- 1. Competitiveness of shippers, industries, logistics operators & shipping lines.**
- 2. Attraction of new industries & distribution centers.**







## Connectivity: efficient maritime connections with foreland & Mediterranean

### Weekly connections with all main world ports

Regular, frequent & direct container services

#### ➤ Main maritime routes from Barcelona (direct container services):

MAIN MARITIME ROUTES	Number of services from / to Barcelona
Europe – Far East	4
Europe – Indian Subcontinent	2
Europe – Middle East	10
Europe – Africa	26
Europe – North America	8
Europe – Central & South America	9
Mediterranean	47

Almost **100** regular shipping lines  
Operated by **54** shipowners  
connecting Barcelona with **209** ports



## Network of maritime services in the Mediterranean

### Container liner services in the Mediterranean

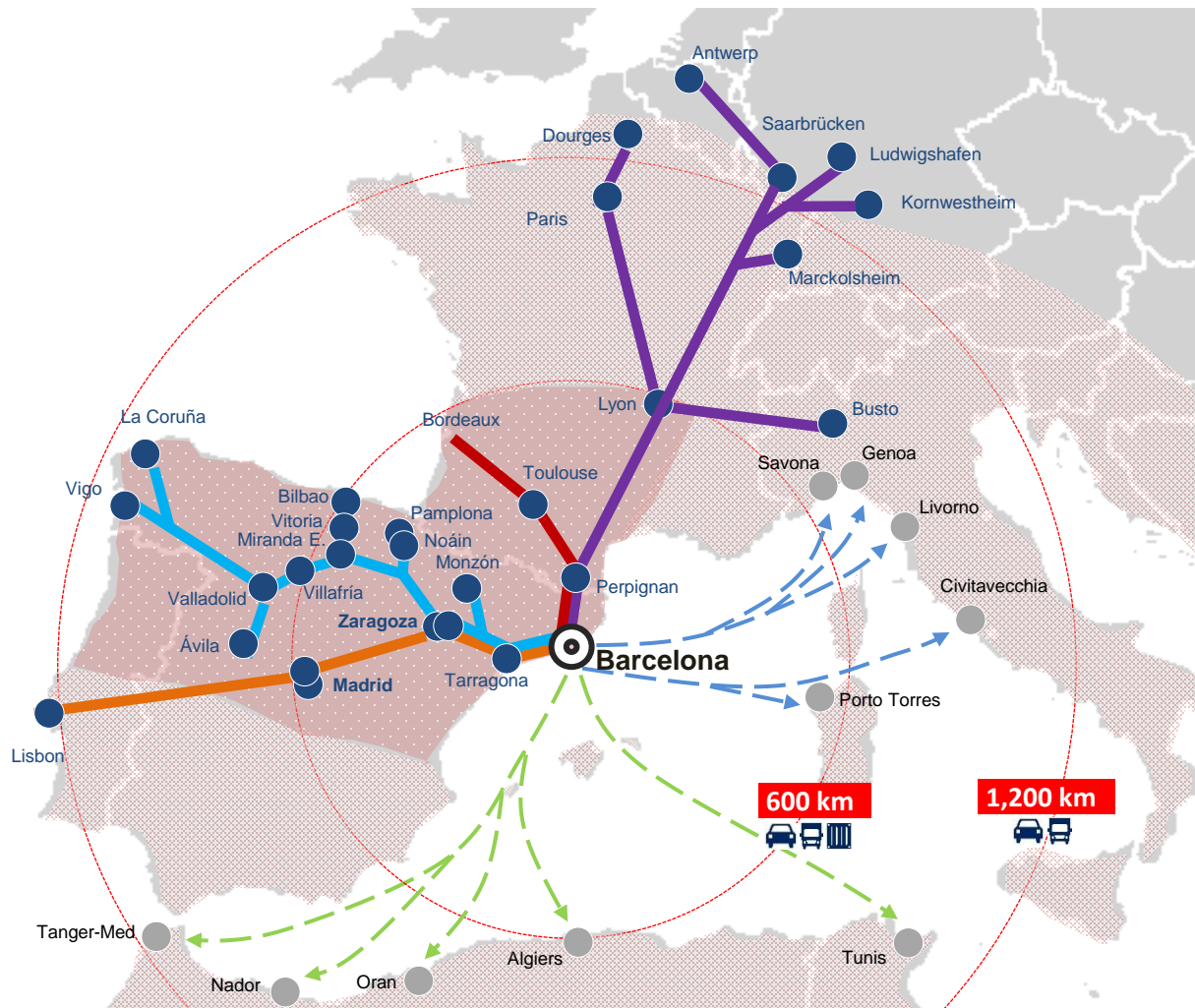


### Short Sea Shipping & Ro-Ro & Multipurpose services





## Location of Port of Barcelona customers and hinterland



**Port of Barcelona**



**Hinterland**



**Containers, finished vehicles and trailers**



**Finished vehicles and trailers**



**Intermodal terminals connected to the port by rail (containers and vehicles)**



**Ports currently connected to the port by Motorways of the Sea**

**Strategic corridors**



**Iberian North Western**



**Iberian Central**



**Southern France**



**Central European**



**Motorways of the Sea with Maghreb**



**Motorways of the Sea with Italy**





## Competitive logistics chain through the Port of Barcelona

China



Barcelona



Madrid



World

**Saturday**

**08:00**

Container ship arrives at the Port of Barcelona. Containers are unloaded and transferred to the train (Sunday 01:00)

**Sunday**

**06:00**

Cargo train leaves the Port destination Madrid

**Sunday**

**16:00**

Cargo train arrives to Azuqueca intermodal terminal (Guadalajara, Madrid)

**18:00**

Trucks pick up containers and transport them from the terminal to the nearby distribution centre  
In Madrid

**Monday**

**10:00**

From the distribution center the pieces of clothing are shipped throughout the world





# Contents

1

Global logistics trends and the new role of Mediterranean ports

2

Why today intermodality is vital for a Port's strategy?

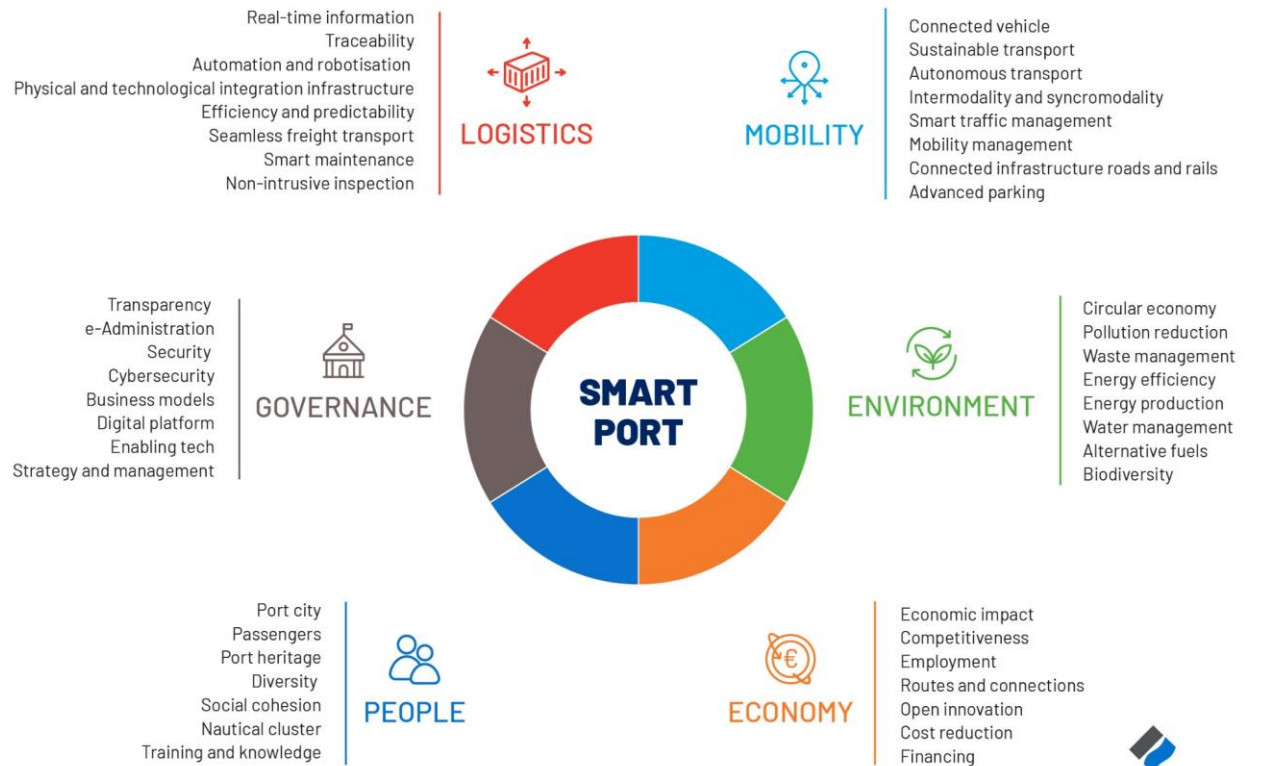
3

Present and future challenges



# What are the challenges in an end to end supply chain driven market which need to be considered?

## Digitalisation





What are the challenges in an end to end supply chain driven market which need to be considered?

## Sustainability



Reduce the environmental impact of port activity in the Port area and its vicinity

- *Improve air quality: electrification, more sustainable fuels(LNG), multimodality, energy generation and smart grids)*
- *Improve the quality of ports waters*
- *Make efficient use of resources*
- *Prevent soil contamination*
- *Generation of renewable energy*



Increase the sustainability of the supply chain that uses the Port

- *Promote more sustainable forms of transport*
- *Reduce the carbon footprint of port activities*
- *Promote the use of alternative fuels for the different forms of transport: LNG*



[www.portdebarcelona.cat](http://www.portdebarcelona.cat)

**Thank you.**

