







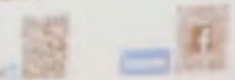


AFRICA 2017

Tuesday 23 to Thursday 25 November 2017



All presentations are available at www.transportevents.com
Username: ABIDJAN Password: 181A171C





PORT OF MOMBASA PORT AUTHORITY

17

WISETECH GLOBAL

15

ABIDJAN PORT AUTHORITY

GHANA PORTS AND HARBOURS AUTHORITY

32
of the
top 50

ggest global logistics service
providers are our customers

\$1
million

novation and
entertainment



23

of the
top 25

freight forwarders
our customers¹

32

of the
top 50

largest global logistics service
providers are our customers

167
billion

on and prod
ment spend
FY17)³

,000

customers



2
the
p 50

global logistics service
ers are our customers?

167
illion

on and produ
ment spend
FY17)³



Faiveley

A Walbrook Company

moreCONNECT

various designs for
ideal integration in
ever

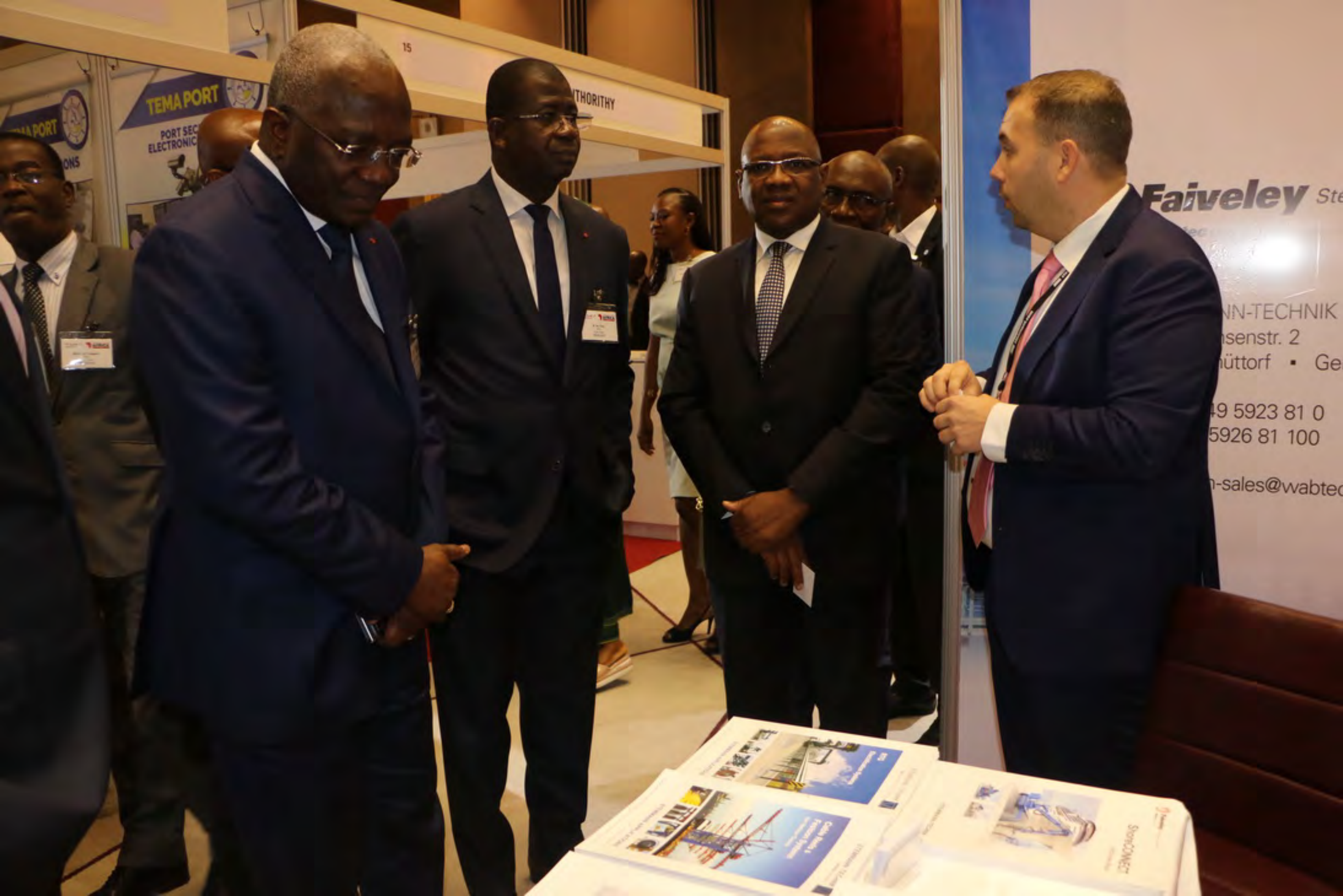
la

GHANA PORTS AND HARBOURS AUTHORITY

GHANA PORTS AND HARBOURS AUTHORITY



The Port of Tema



TEMA PORT

PORT SECURITY
ELECTRONIC

15

THORITY

Faiveley Ste

NN-TECHNIK

senstr. 2

hüttorf • Ge

49 5923 81 0

5926 81 100

n-sales@wabtec

14

GHANA PORTS AND HARBOURS AUTHORITY

TEMA PORT

PORT SECURITY
ELECTRONIC CONTROL

Faiveley Stemmann-Technik
A Walbrook Company

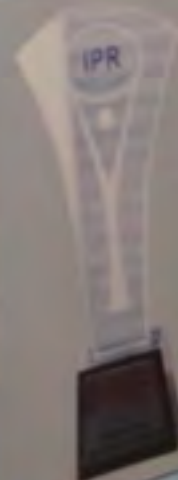




URITY

TEMA PORT

AWARDS



14

GHANA PORTS AND HARBOURS AUTHORITY

TEMA PORT

TEMA PORT

PORT SECURITY
MARITIME CONTROL



TEMA PORT

AWARDS



14

GHANA PORTS AND HARBOURS AUTHORITY

TEMA PORT

PORT OPERATIONS

TEMA PORT

PORT SECURITY
ELECTRONIC CONTROL



IPR





PORT

GHANA PORTS AND HARBOURS AUTHORITY



de S

GHANA PORTS AND HARBOURS AUTHORITY



PORT AUTONOME DE SAN PEDRO

Faiveley Siemens-Technik
Ruhle Group



Port Autonome de San Pedro
Un port qui s'ouvre sur le monde

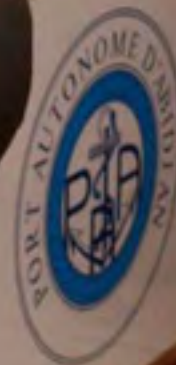


ARSO



ABIDJAN PORT AUTHORITY

ABIDJAN PORT AUTHORITY



15

ABIDJAN PORT AUTHORITY

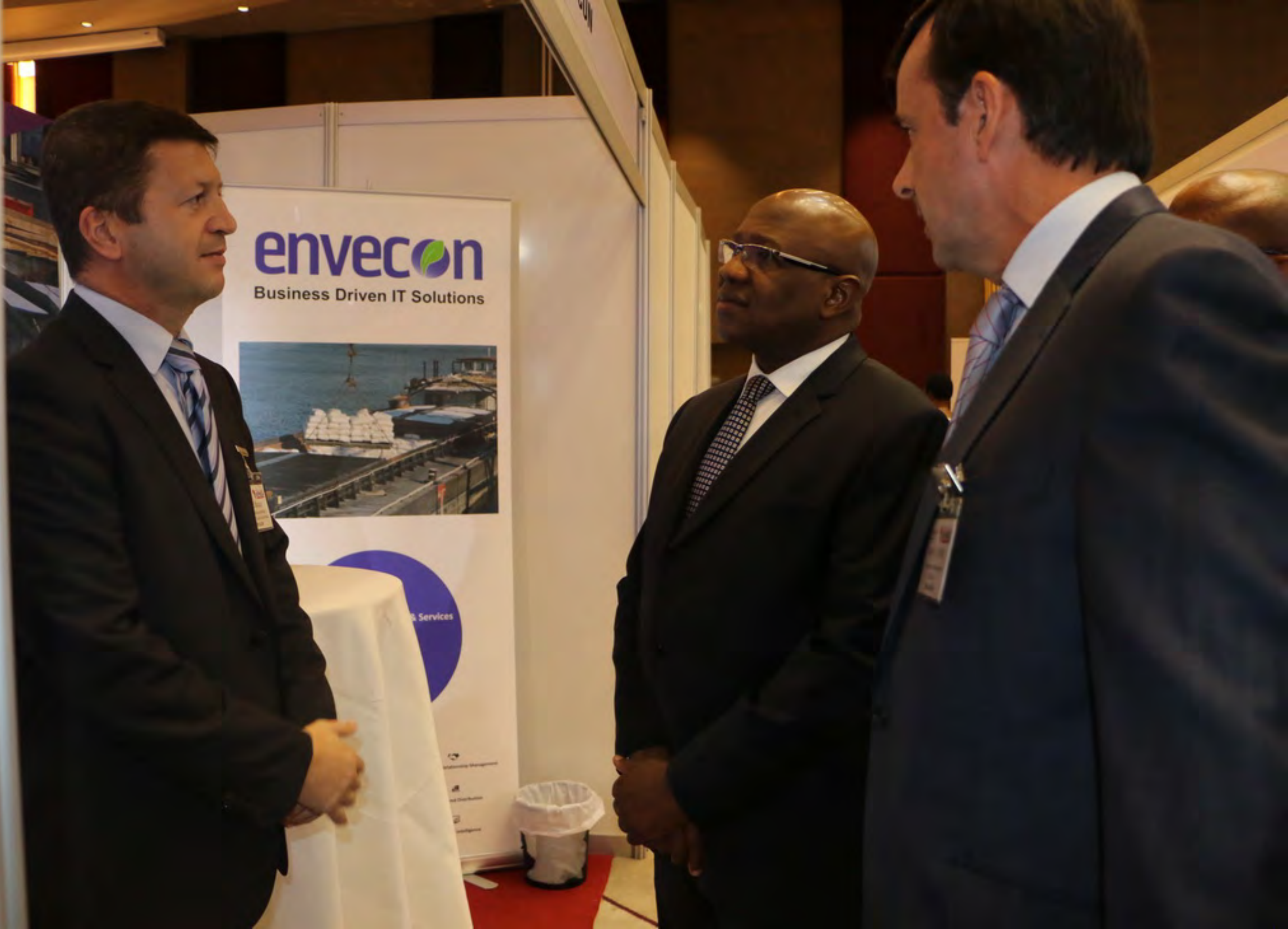


Welcome to Abidjan Port



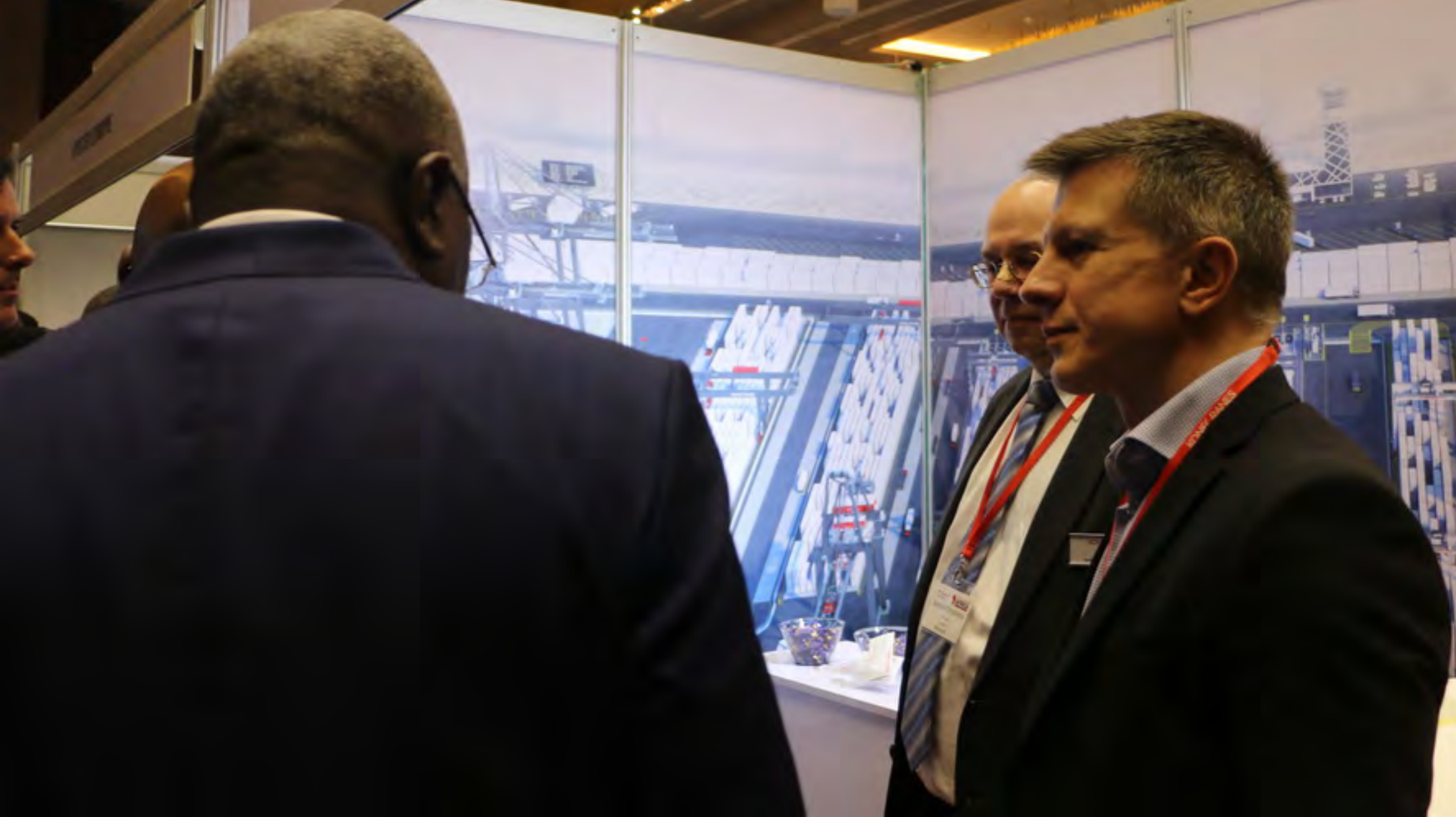
ROLLORE TRANSPORT

pour de la transformation
de la Côte d'Ivoire



KONECRANES
Lifting Businesses

KONE



SIEMENS

Ingenuity for life

SIMOCRANE Modular Automation

siemens.com/simocrane



12
SOLVO

o.TOS 6.0

w features

n-one system for an

ce;
equipment

e wor
nal f

SOLVO

solvosys.com

Solvo

Ultimate solution
for your logistics

solvo.WM

Online warehouse
management

Information Technology
and consulting

Warehouse
Management
Support





SOLVO

Solve

ultimate
for your logistics

vo. W

logy

vo

for logistics

implementation

operation

AFRICA
Africa
Member of Transport
Africa
2017



- Many African...
- 16 of the Fifteen largest remittances recipient countries in West Africa. Remittances funds:
 - represent a lifeline for household consumption,
 - increase foreign exchange reserves
 - allow for investments in small businesses and education
- ECOWAS adopted a common external tariff which became effective in January 2015 resolution
- Continental Free Trade Area (CFTA) will strengthen Africa's appeal as a global trading partner



effective in January 2015 resou
appeal as a global trading part



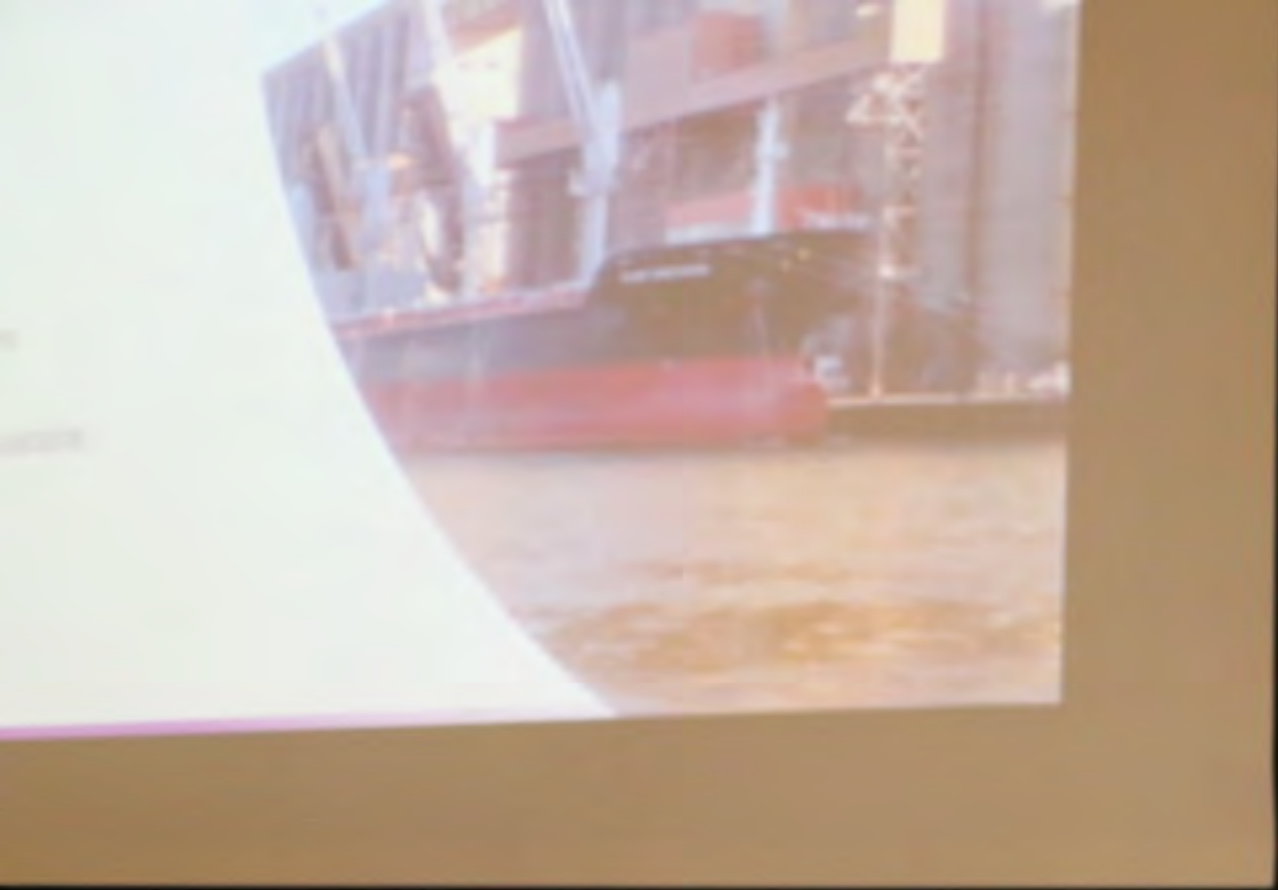




CTS Consulting

Specialized in sustainable development of
businesses





Risk & Reward

A Port insurer's guide to accidents and risk management





- 40,000 PLS TUS handled in 2018
- 14,000 containers delivered in 2018
- 18,500 sqm warehouses
- 50 trucks dedicated fleet

Main Activities

- Logistics
- Warehousing
- Transport



- 120 ports across 6 continents
- 19 car/container terminals (Total: 5.5 million m2)
- 4 Owned Logistics Companies
- 66 worldwide branches
- Number of employees: 13,000 (including crews)





2017 Market – The Evolution of Containerised Bulk Handling (23 November 2017)



omer has to scout the
et for forwarders

omer has to invite
mination officers and
rnmment agencies. This
delay the process

ghing has to be done
where





• Born in 1930

- energy production
- bridge, steel structure, tank, gates, remote, fork and lifting equipment

• In 1965

- container handling equipment, crane, gantry cranes
- development for nuclear, thermal and hydro power station

• 1973 First Nuclear Polar Crane installed in Georgia (Portugal)

- 40 m Diameter
- 400 Tons - lifting
- 360° degree circular movement

• 1970 IHI Corporation (Japan) provided OMG with the authorized license for the conception and manufacturing of the first Ship to Shore in Felixstowe Port (1990)



Four men are seated at a long conference table. They are looking at documents or laptops. There are microphones and water bottles on the table.



A man in a suit and glasses is standing at a podium, speaking into a microphone. He is holding a laptop.



A small round table with a white tablecloth, holding a glass award and a small box.







(an)

- FINANCEMENT: Budget PAA
- Coût : 33,6 Milliards FCFA + 5 Milliards pour le dragage des chenaux (58.845,320 €)







Performance Measurement

Principles for Defining KPIs and Targets

Relevance

- Measurements that contribute to the project and describe core processes
- Ignore marginal activities

Practicability

- Measurements feasible to implement with a view to resources
- Measurements for which data will be available in a workable format, i.e. electronically transmittable with standard protocols

Sustainability

- Measurements that are maintainable in the future, i.e. data should be used from sources that are not project dependent but stable, e.g. Single Window, TOS
- Reduce number of measurements to avoid effects of weariness in the port community

Expectations

Conditions

Feasible KPIs

