



TRANSPORT MIDDLE EAST 2025

Towards Sustainable and Modern Logistics: From Aqaba to the World



Sure to be Safe

Siegerland Bremsen



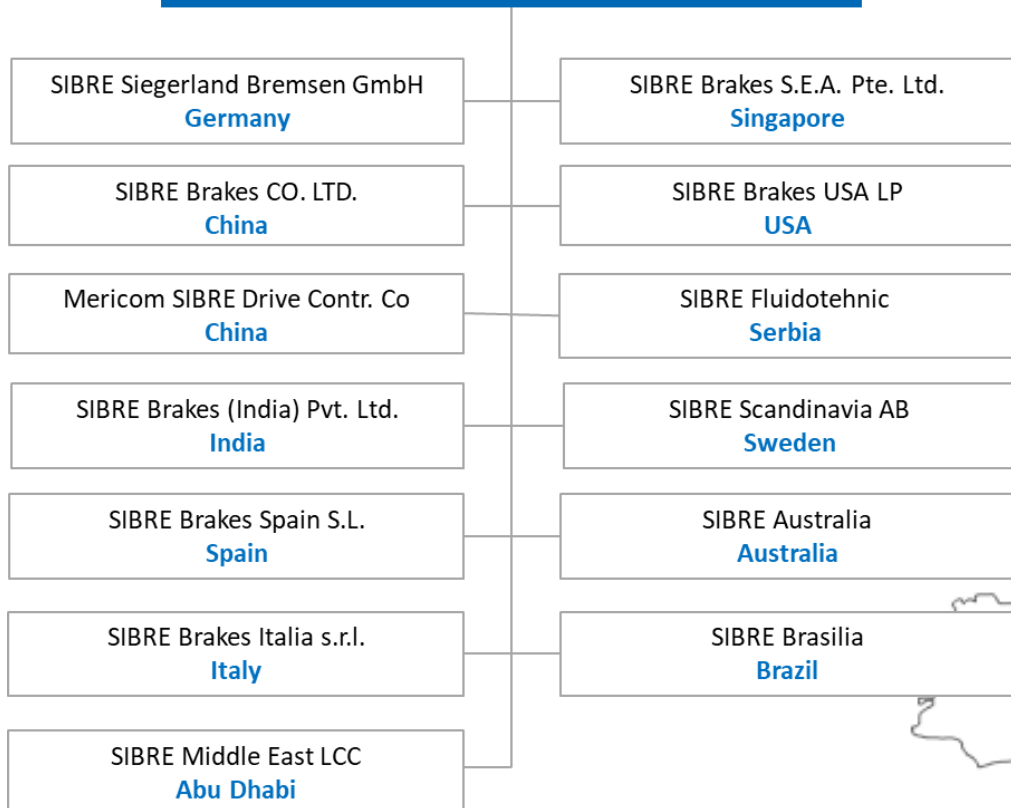
Brake Technology and Monitoring for Increasing Safety and Productivity

Matthias Grimm, Head of Components



Siegerland Bremsen

SIBRE Holding GmbH & Co KG





Headquarter Haiger

SIBRE invest to stay future-proof and reliable

- 3 new halls in total
- 18 new CNC machines + ABB handling robots
- > 17 Mio € investment since 2019
- Highest energy efficiency



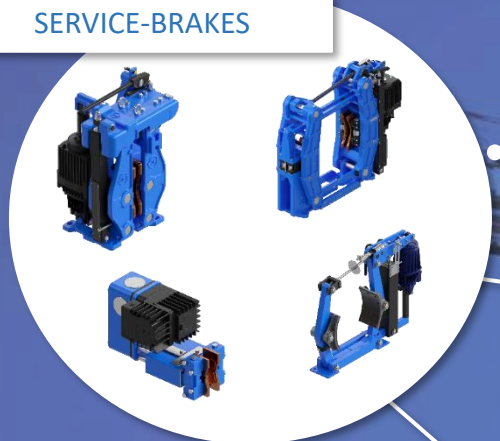
SIBRE invest to stay future-proof and reliable

- **Existing test rig**
 - Renewal of control, measurement and evaluation
- **Dynamic storm brake test rig**
 - Holding forces over 1000 kN
- **New dynamic test rig**
 - Inertia up to 500 kgm²
 - Speed up to 2200 rpm



AS A ONE STOP SUPPLIER, SIBRE
DELIVERES COMPREHENSIVE
SOLUTIONS FOR ALL DRIVES IN CRANES.

SERVICE-BRAKES



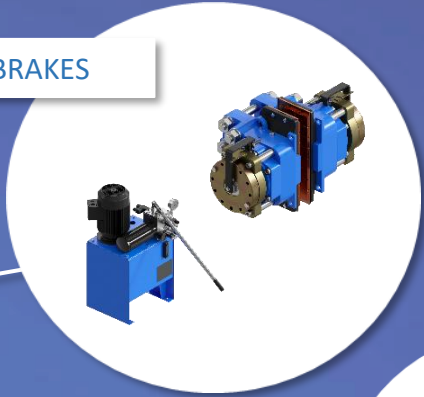
STORM-BRAKES



HYDRAULIC BUFFERS



SAFETY-BRAKES



SNAG LOAD PROTECTION & MONITORING



WHEELS & SHEAVES

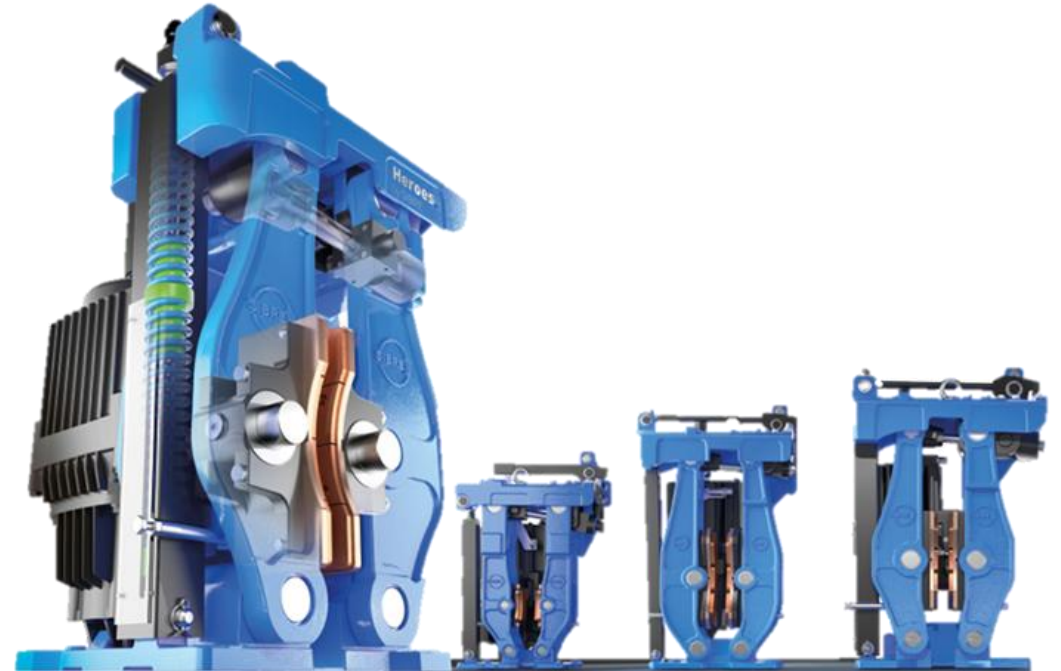


COUPLINGS

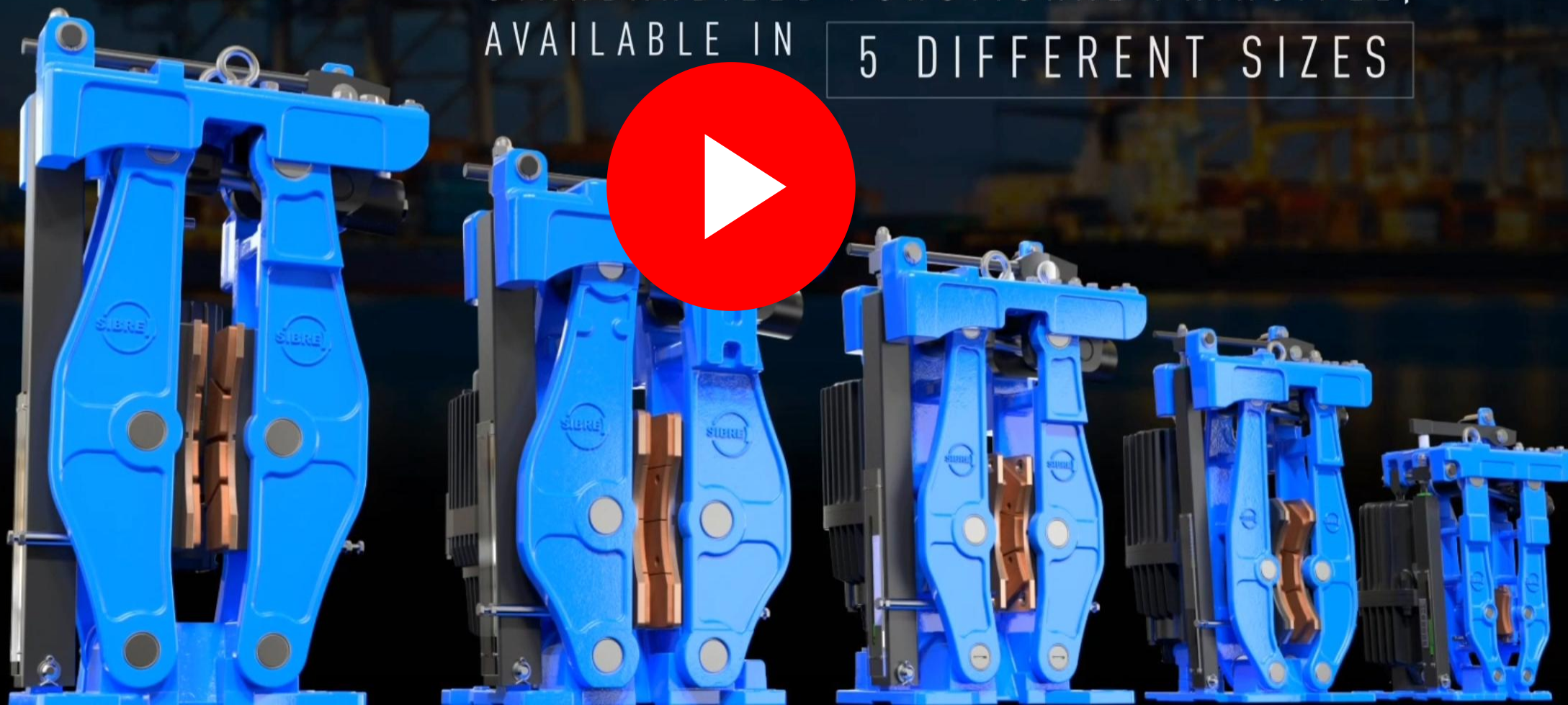


USB5 service brake - key design advantages

- Designed for all applications in a crane
- Identical conditions regarding installation, adjustment and maintenance
- Enhanced corrosion protection
- Parallel opening of brake shoes
- Optimized spring unit
- Upgraded manual release system
- Monitoring of brake status

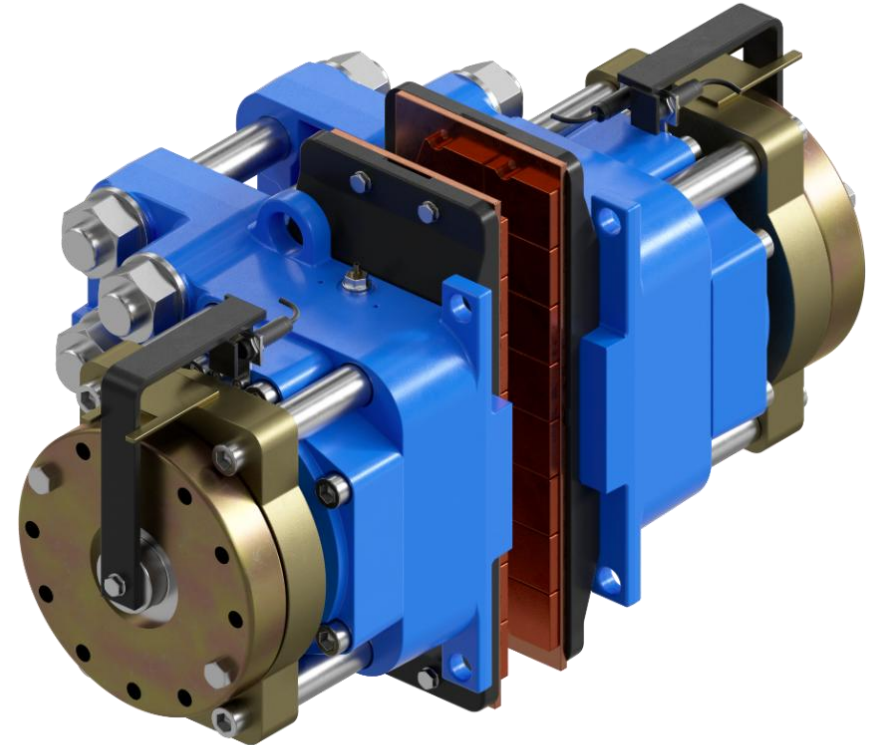


STANDARDIZED FUNCTIONAL PRINCIPLE,
AVAILABLE IN 5 DIFFERENT SIZES

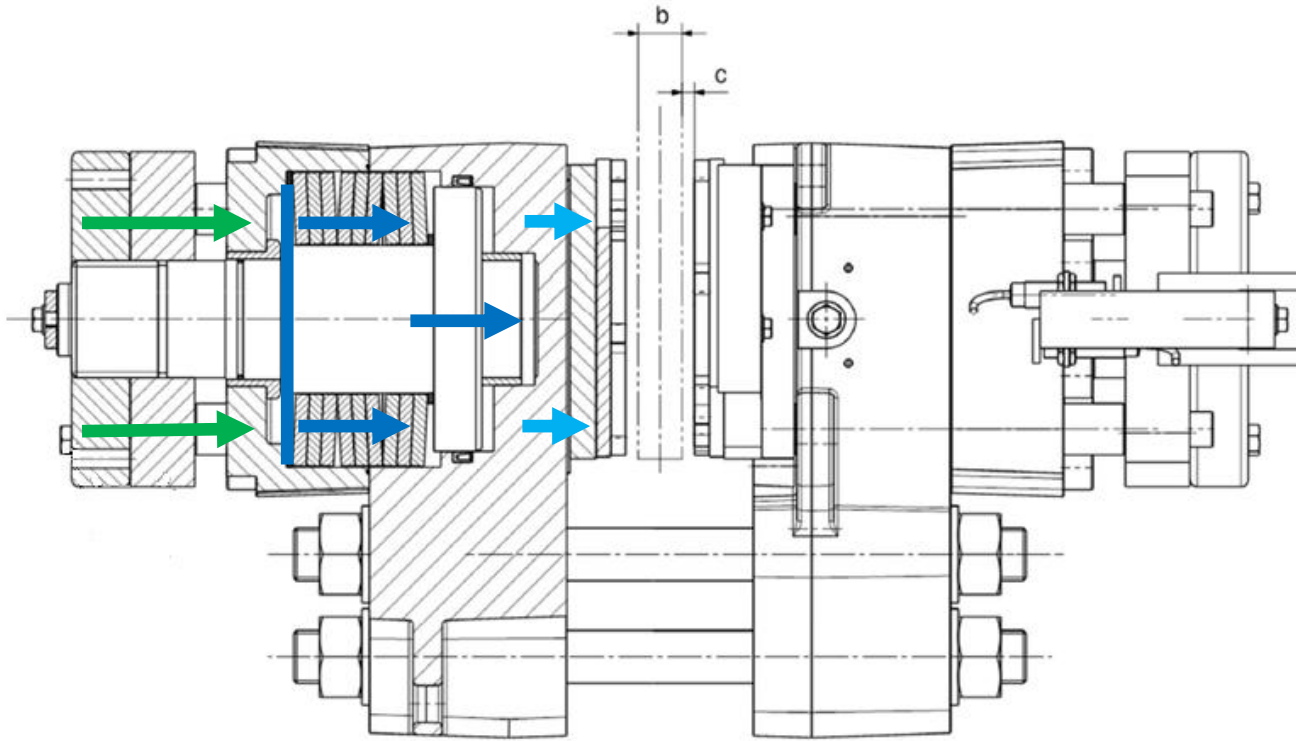


SHI emergency brake

- Standardized functional principle, available in 7 different sizes
- Clamping force range: 17kN - 555kN
- Less leakage-risk
- Less maintenance requirements
- Favorable force-transmission



SHI design benefits



- 1) Extending cup-springs
- 2) Transmission to piston
- 3) Transmission to pressure pins
- 4) Transmission to linings/disc

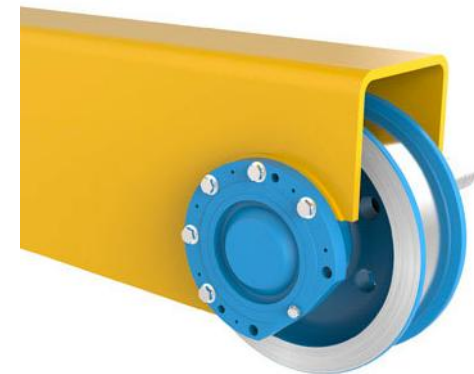
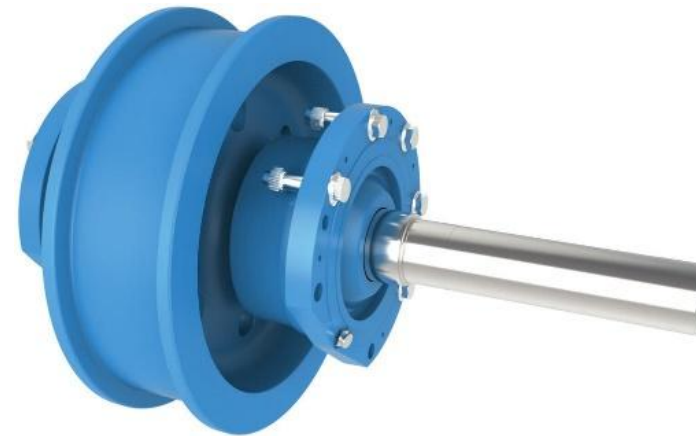


SIBRE crane wheels & units

- single crane wheels
- complete driven and non-driven wheel sets
- Size 315- 1000 mm

according to:

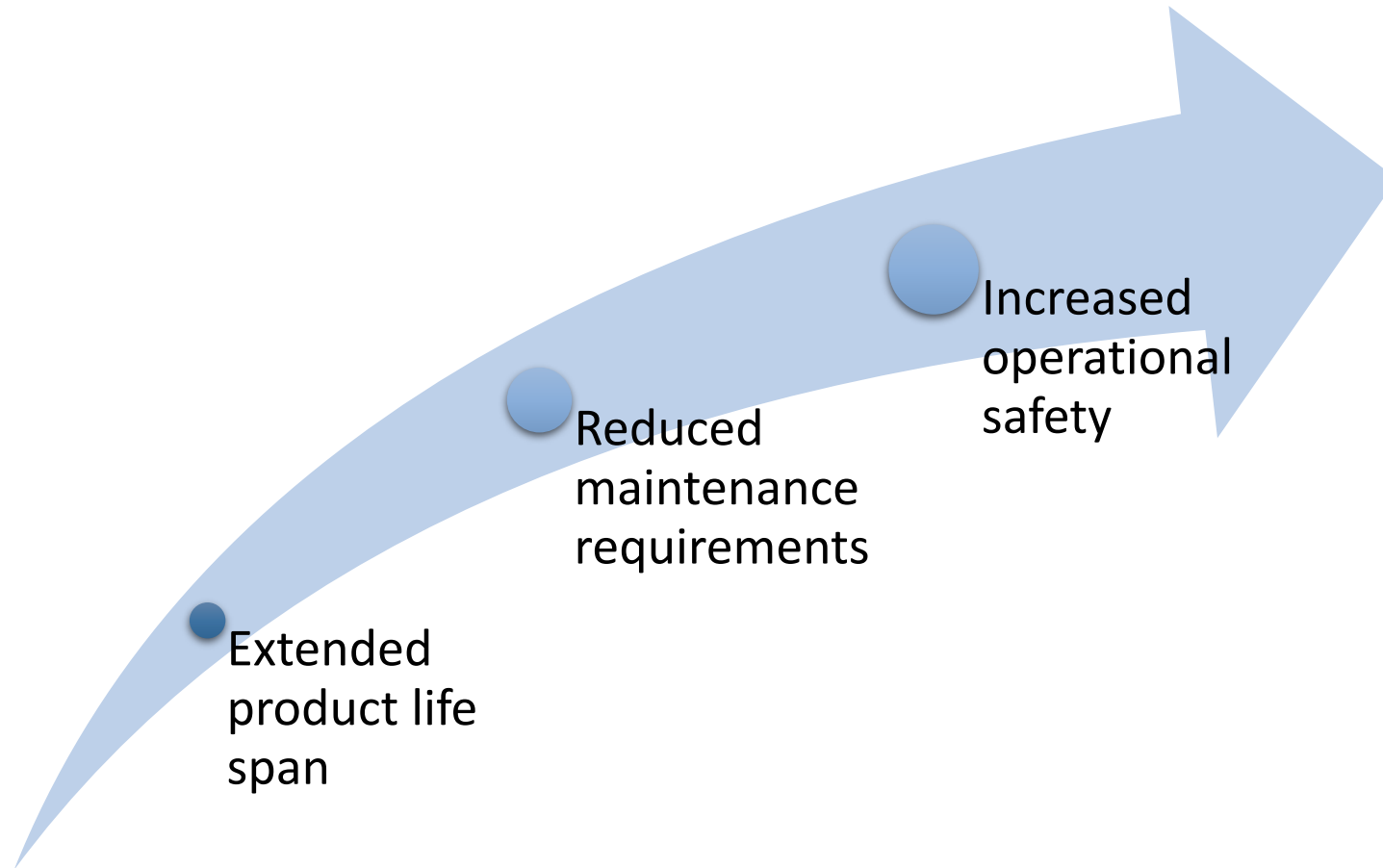
- standards (DIN 15090)
- customer specifications
- SIBRE own design drafts
(approved by customers)



Assembly



Maximize your efficiency by





Sure to be Safe

Siegerland Bremsen



TRANSPORT
MIDDLE EAST 2025

Towards Sustainable and Modern Logistics: From Aqaba to the World

Thank you for your attention!

matthias.grimm@sibre.de | www.sibre.de

