
Electric solutions for port cranes

LIEBHERR

Maritime cranes



Presentation outline

- 01 Liebherr – a family business
- 02 E-Drive for mobile harbour cranes
- 03 Zero emission mobile harbour crane
- 04 Purely electric portal crane LPS 420 E

01 Liebherr – a family business



LIEBHERR

Group overview (2022)



1949

Founded by Hans Liebherr in Kirchdorf an der Iller, Germany

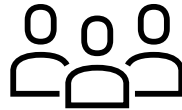


Parent company
Liebherr-International AG
based in Bulle, Switzerland

Liebherr is a family-run technology company

13

Product segments



51,321

Employees

40

Production sites



12,589

Turnover in € mio

>140

Companies

A 100% independent family business



From left to right: Jan Liebherr, Stéfanie Wohlfarth, Sophie Albrecht, Philipp Liebherr, Patricia Rűf, Johanna Platt, Isolde Liebherr and Willi Liebherr

02 E-Drive for mobile harbour cranes



Advantages of an electric drive

- Port cranes fitted with electric main drive delivers **many benefits**:
 - ZERO CO₂ emissions
 - Lower operational costs
(Depending on local fuel vs electricity prices)
 - Reduced maintenance
 - No fuel and lubrication
 - Substantial reduction of engine noise

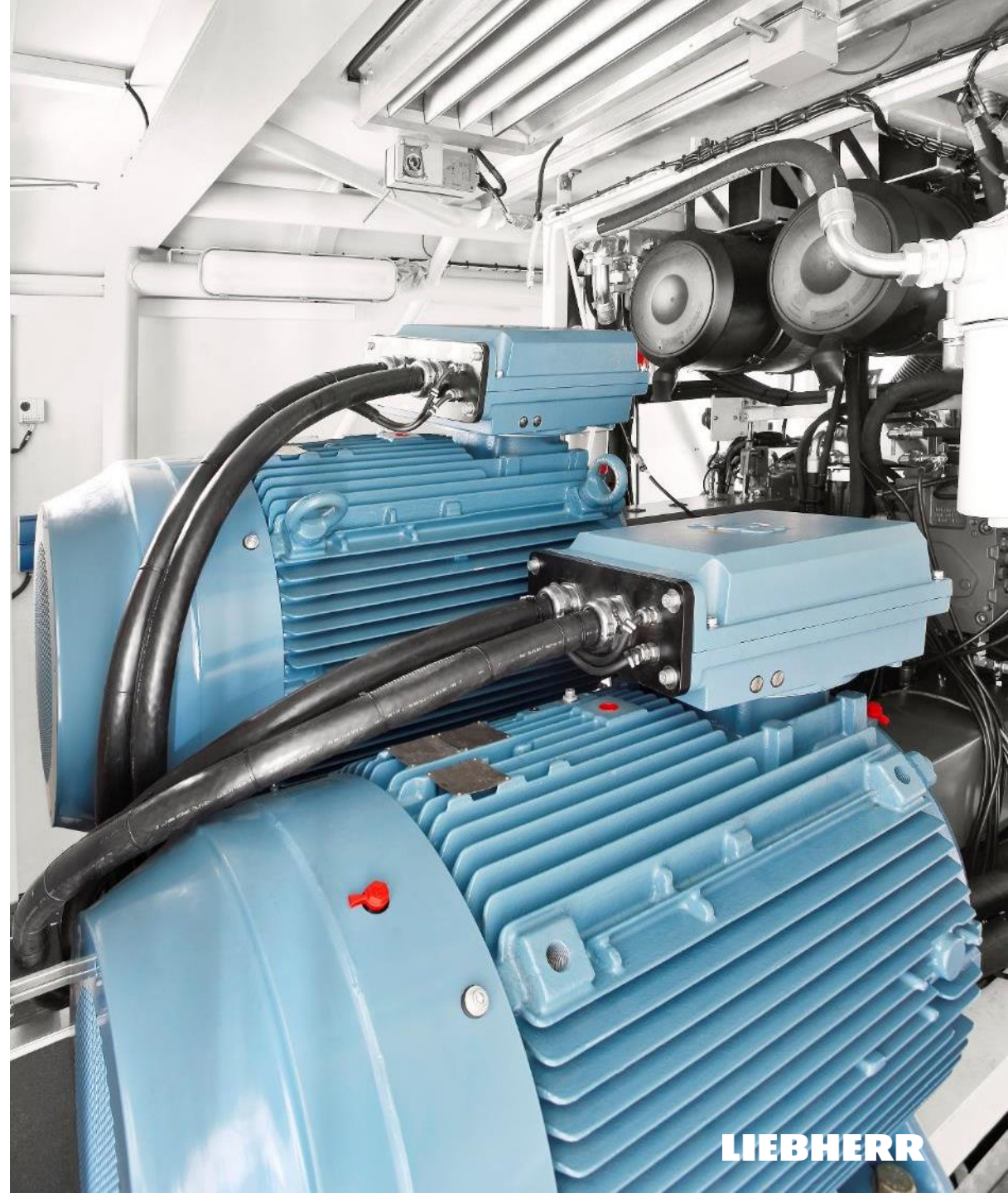


Advantages of an electric drive

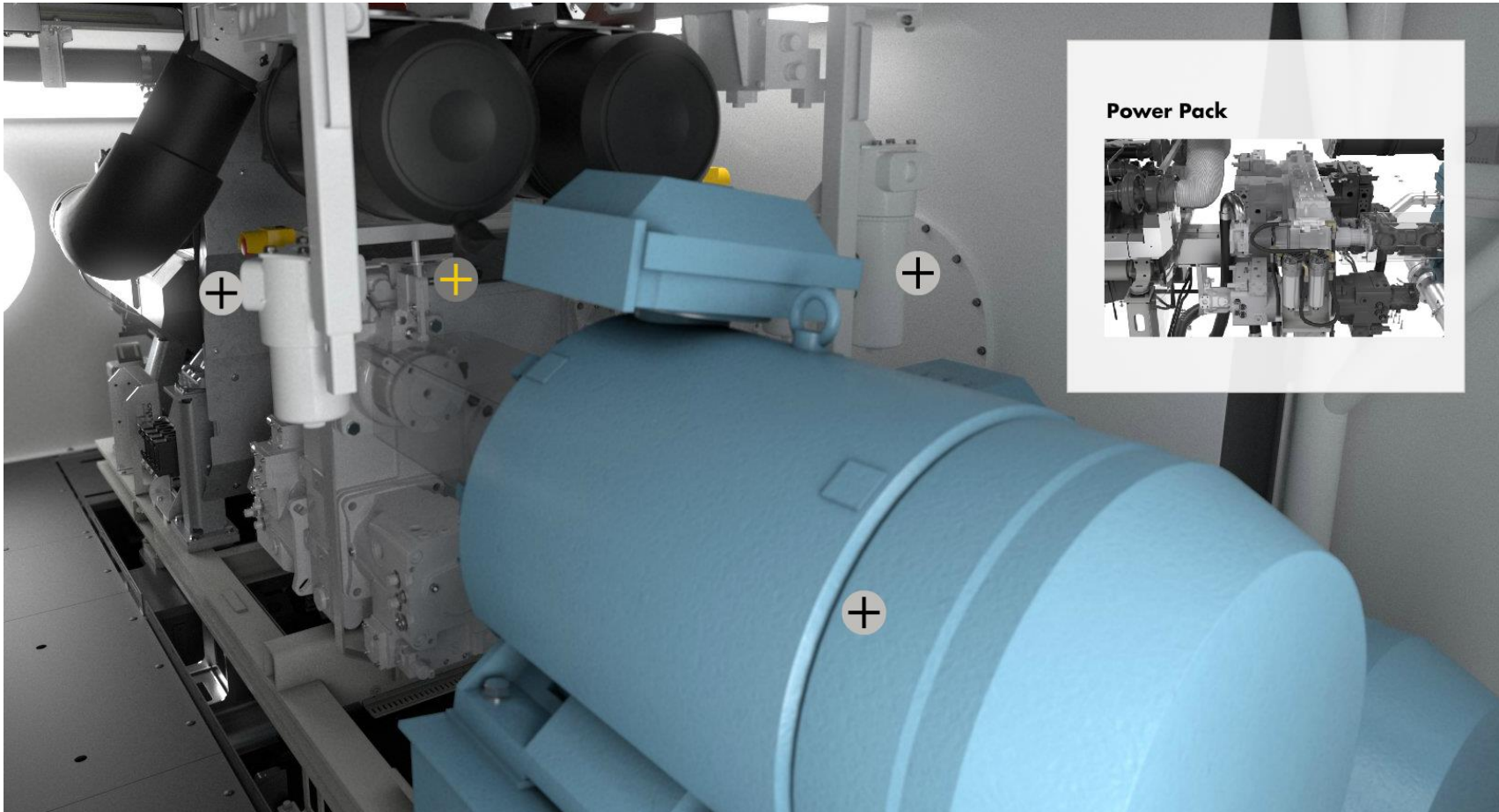
- An auxiliary external generator can also be plugged in to provide further backup if required

The electric main drive for LHM

- The two E-drive motors are installed internally within the cranes engine room and are therefore **protected from the elements**
- The electric drive consists of **two squirrel cage induction motors** for driving the crane hydraulics
- Engine characteristics:
 - Powerful
 - Reliable
 - High speeds
- Suitable for operation with power supply from 400V – 20kV and 50/60 Hz



Hybrid drive solution



- **Hybrid drive** (electric & diesel) also possible
- A mechanical clutch allows for quick switching between electric and diesel operation.

Electric drive in high demand

- Liebherr has been using **an all-electric or hybrid drive concept** consisting of a diesel engine and an electric motor **for over 20 years** for its mobile harbour cranes
- In the 2021-2022 sales years, the demand for Liebherr mobile harbour cranes with an e-drive has **increased strongly**
- Compared to 2019, the number of units equipped with an electric motor has even **doubled**



Representative solution 1

- High Voltage cable drum in the middle of the undercarriage with a cable trench on the quay





Representative solution 2

- Low Voltage cable drum at the back side of the undercarriage with a cable trench on the quay



Representative solution 3

- High voltage cable drum at the back side of the undercarriage with loose installation of the cable on the quay



Representative solution 4

- High voltage cable drum at the back side of the undercarriage with a cable car connected to the undercarriage
- Cable will be laid in a cable trench and covered with Panzerbelt



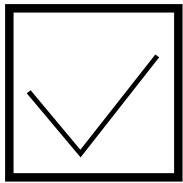
03 Zero emission mobile harbour crane



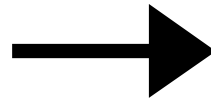
LIEBHERR

Zero emission LHM traveling by battery

Emission free crane travelling via battery



Emergency operation possible



Up to 2 km travelling distance



10 years battery lifetime



Unplugged LHM

- Up to **2 km travelling distance** with 260 kWh capacity
- Fully recharged battery within 10 to 12 hours
- Up to **10 years** battery lifetime
- Emergency operation possible

Zero emission traveling for grid connected cranes

04 Purely electric portal crane LPS 420E



Purely electrical

First 100% electrical driven port crane in the Liebherr MHC product range

All crane movements electrical driven:

- Luffing
- Hoisting
- Slewing
- Driving



Pure performance

Hook operation:

—124 tonnes

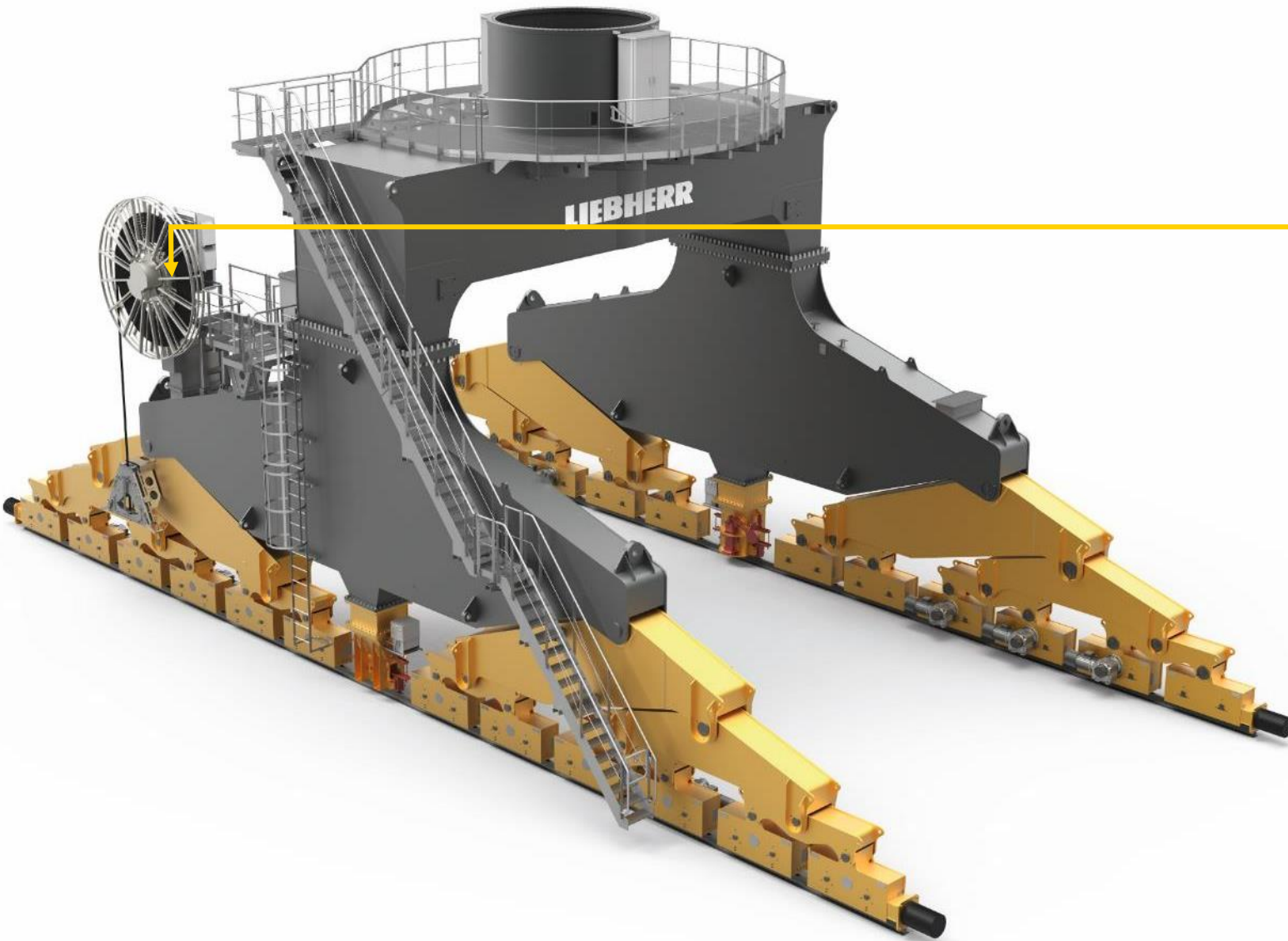
Bulk operation:

—Up to 1200 tonnes per hour

Container operation:

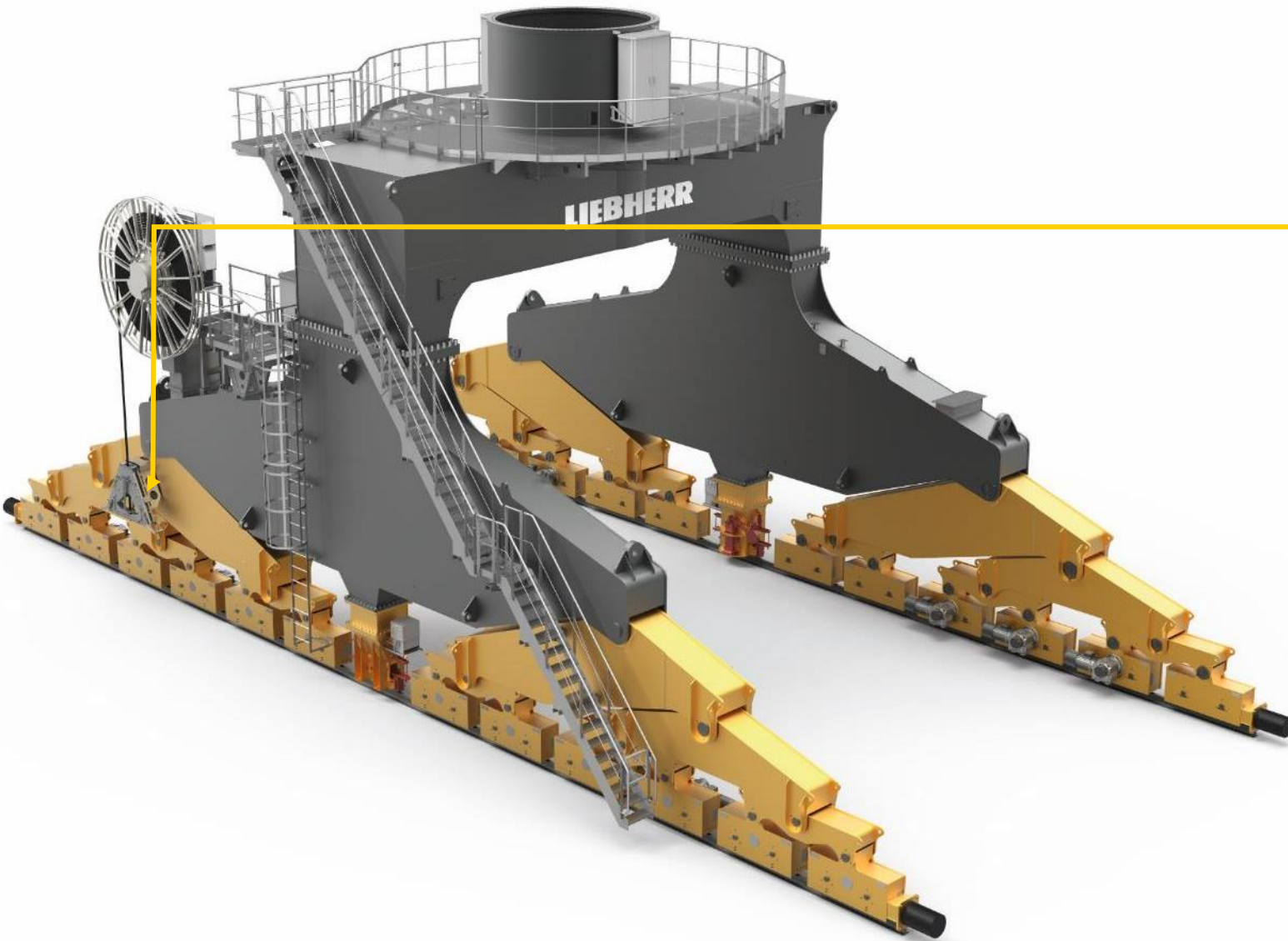
—Up to 30 cycles per hour





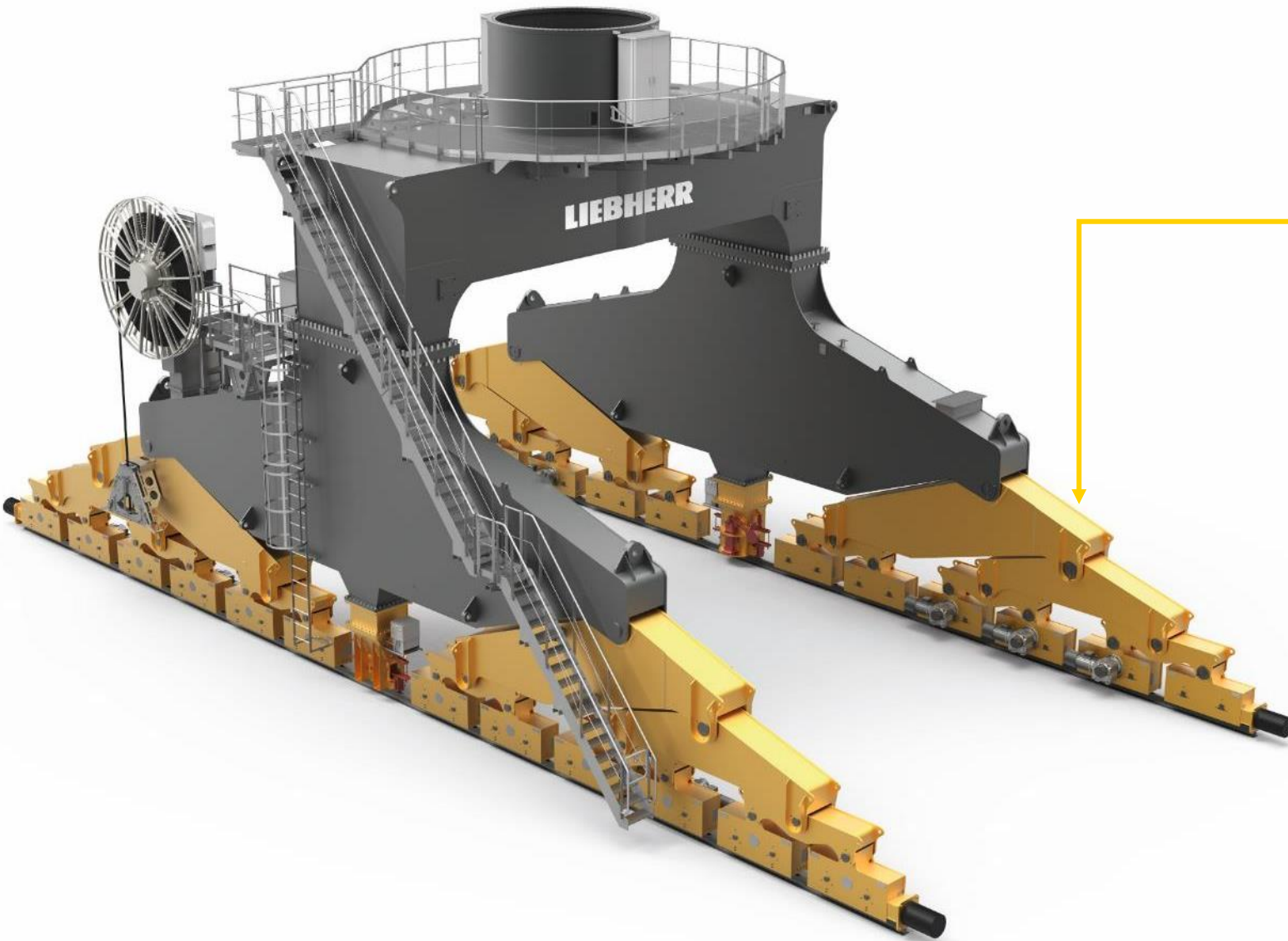
Main power supply incl. cable reel

- Optimised for low-voltage (380 V – 460 V)
- Optional high-voltage supply via additional transformer
- Simultaneous operation of driving, slewing, luffing



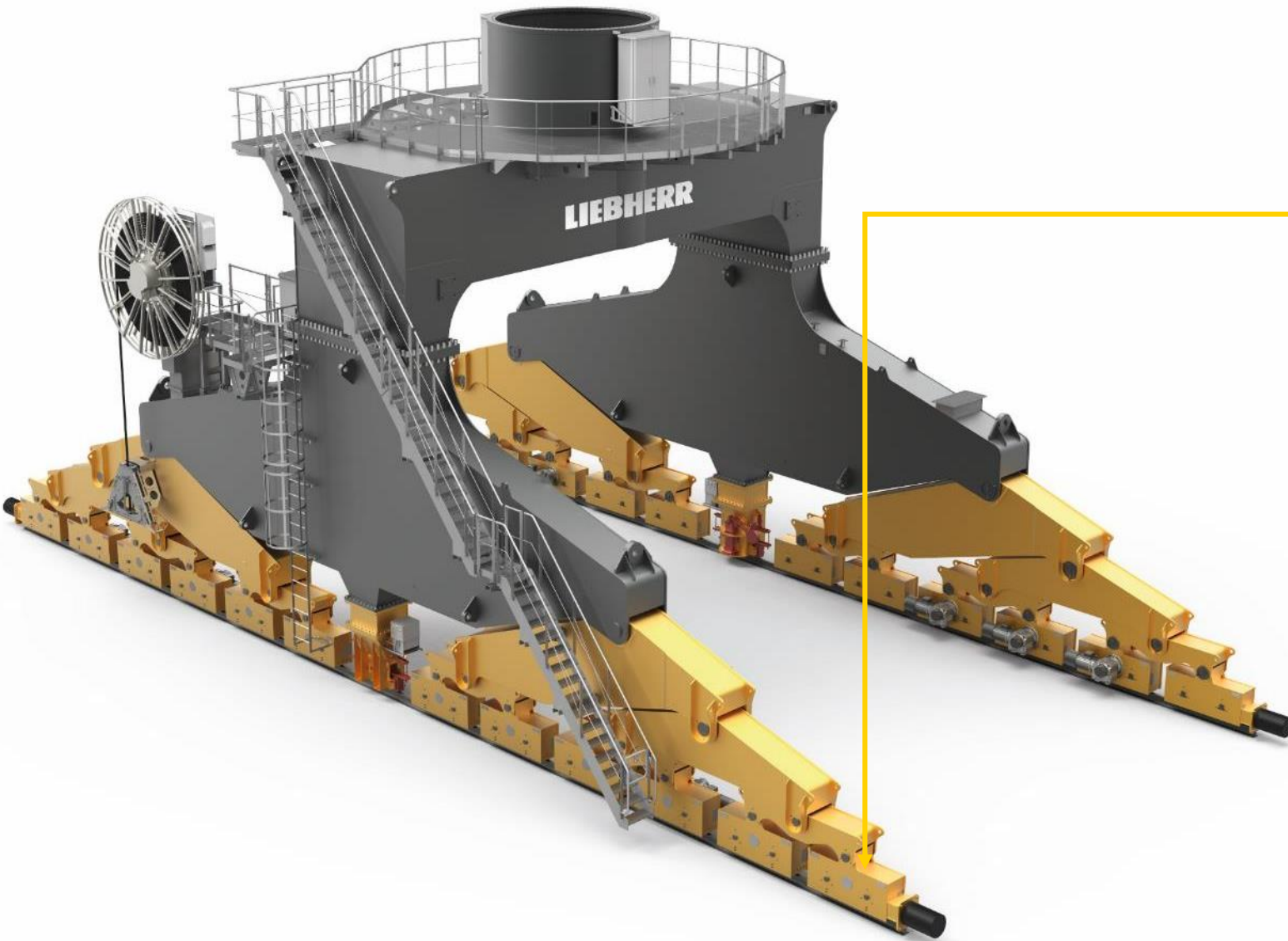
Cable reel incl. deviation funnel

- Traveling distance low voltage
~70m (max.)
- Traveling distance high voltage
 - standard 150 m
 - max. 300 m



Bogie system

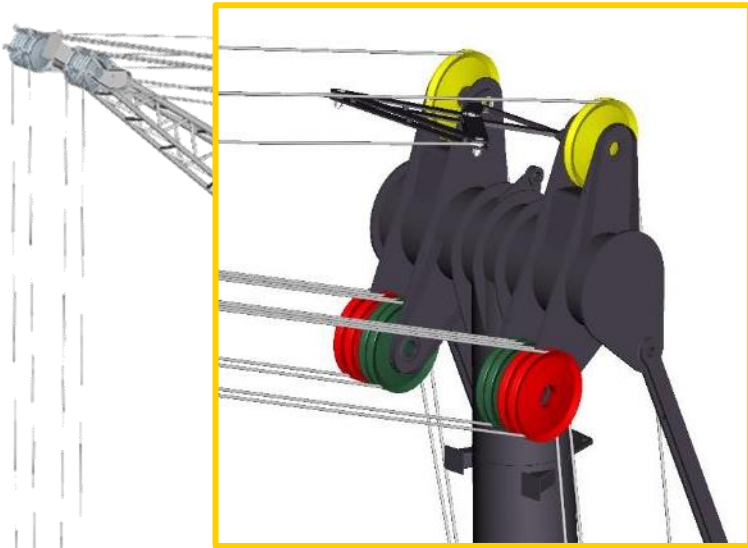
- Bogie driven with 9.5 kW gear asynchronous motor
- Variable number of driven bogies possible (8-12)
- Wheel load 30 t – 50 t
- Buffer, optical anti-collision sensors and parking device



Parking and safety devices

- Storm anchor
- Take up wedge
- Buffer and optical anti- collision sensors
- Cameras to ensure safety traveling (optional)

New Luffing System

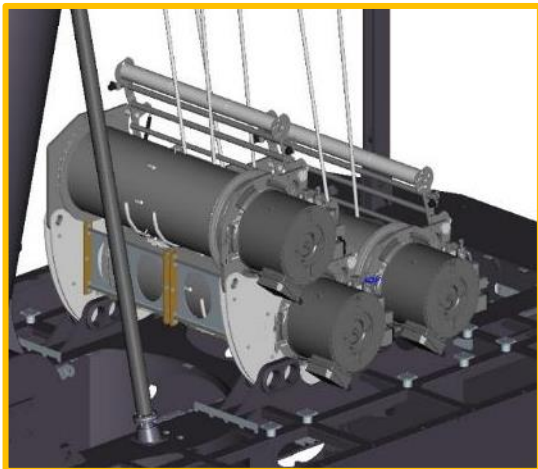


Reeving Plan

- 2-Rope Double Reeving
- Mechanical rope length compensation
- Same ropes & sheaves as 4-Rope Hoisting System
- Boom lay down up to 12,5m gantry height possible

Winch

- Same single layer winch as 4-Rope Hoisting System
- Elastic suspension for less vibration



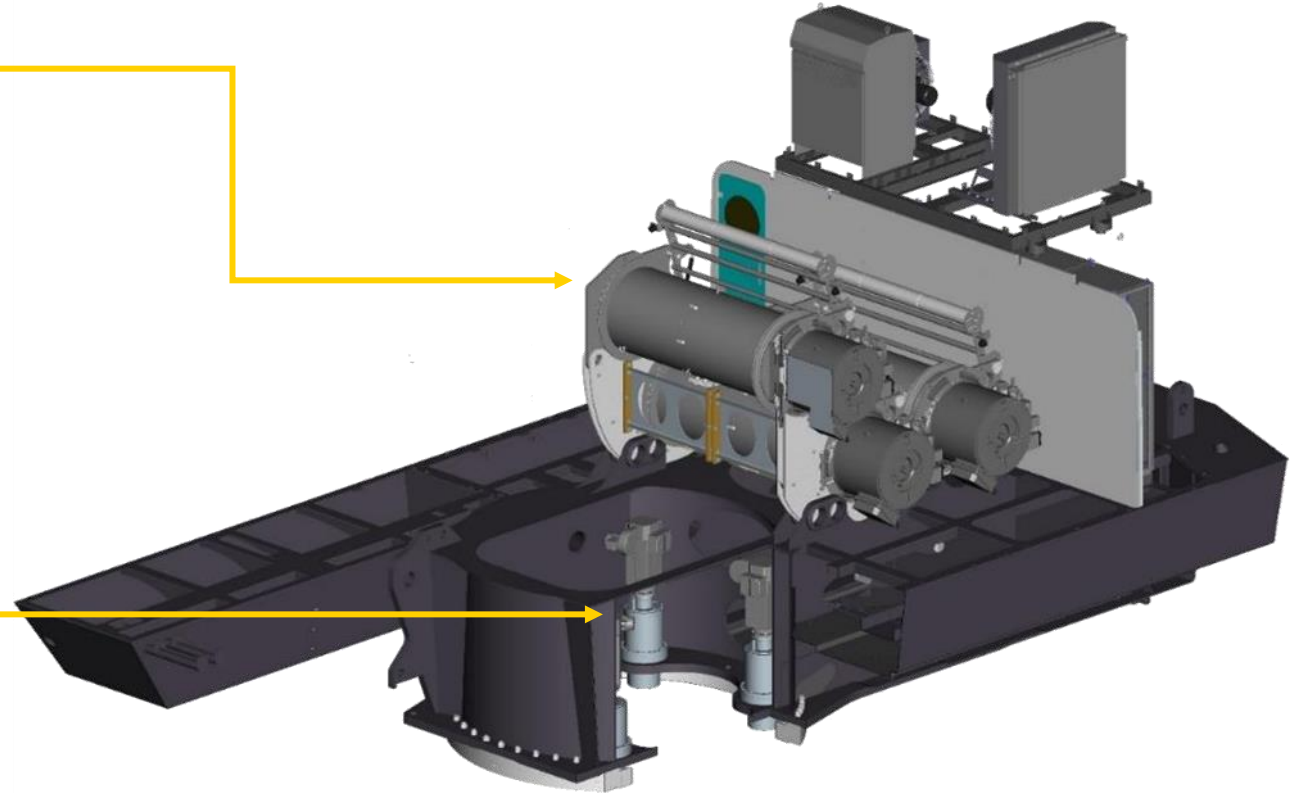
Main drives components

Hoisting and luffing winches

- Water-cooled permanent magnetic field synchronous motors
- Integrated holding brake – hydraulic

Slewing drive

- 3 x air-cooled asynchronous motors
- Integrated holding brake – hydraulic



Electric drive components

Energy storage system (optional)

LiCaTronic® double layer
capacitor unit (watercooled)

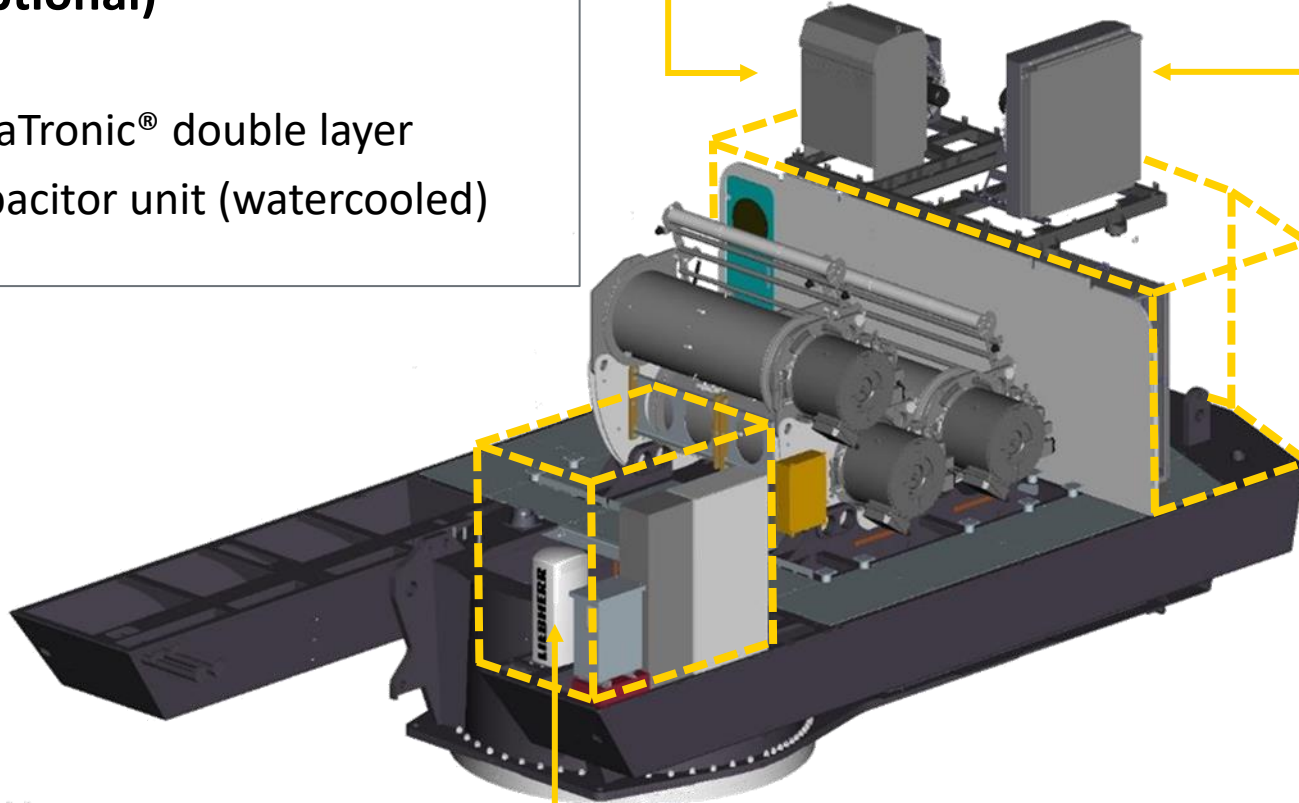
Cooling units & brake resistor

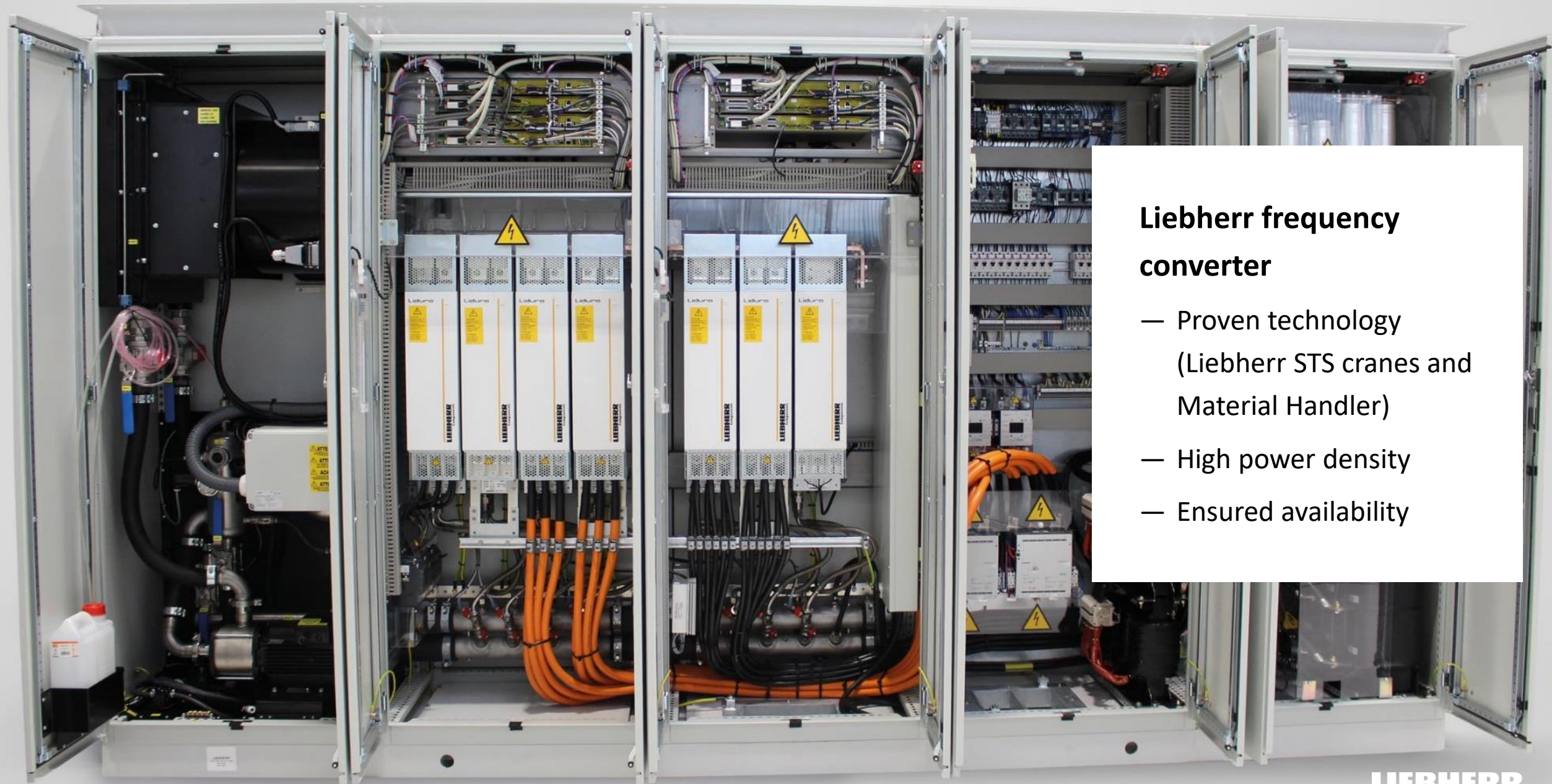
Separate heat exchangers for winch
drives and power electronics

Power electronics compartment

LiCaTronic® Frequency Converter
modules (same as LH150)
Switch cabinet build by COT Biberach

Control electronics compartment





Liebherr frequency converter

- Proven technology (Liebherr STS cranes and Material Handler)
- High power density
- Ensured availability



Technical specifications

Hoisting power	2x190 kW (50 m / min @ 40 t)
Max. SWL (Hook)	124 t
Max. SWL (Grab)	90 t / 75 t
Turnover bulk Classification bulk	1200 t / h A8
Turnover container Classification container	30 cycles / h A7
Max. hoisting speed	100 m / min
Working temprature	-30°C - +50°C

LPS 420 E in Europe

- Euroports Germany expands bulk cargo capacity at the Rostock Overseas Port with the all-electric LPS 420 E portal crane
- Delivery mid of 2022

"We want to further strengthen the handling performance at our bulk terminal. In the coming year, we are not only investing in a new crane to be even more efficient, but we also want to make our contribution to sustainability."

Karsten Lentz
Managing Director of the Euroports Germany Group



—
Thank
k
—
you.



LIEBHERR