

Barcelona, a diversified, productive port

3rd MED PORTS CASABLANCA

Lluís París, Commercial Manager
March 2015

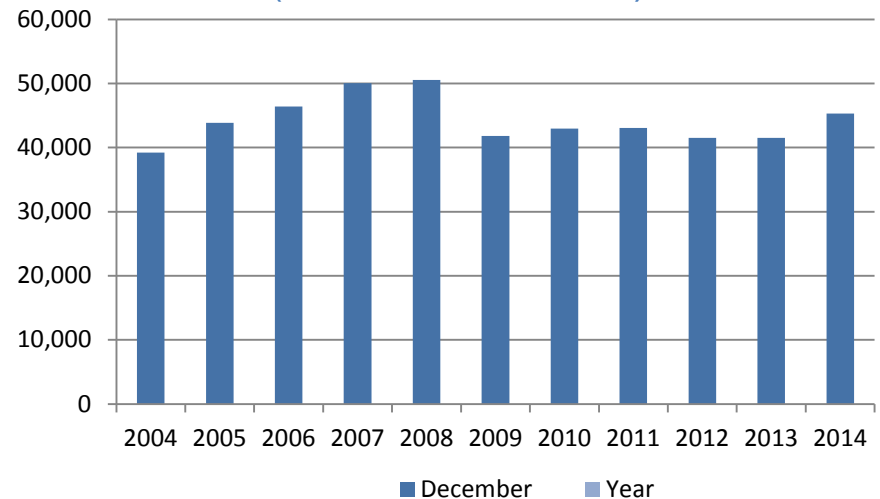


A unique port due to its specialisation in different traffics

Traffic 2014

Total traffic	45,3 M Tm
Container	1,9 M TEU
Vehicles	748.394 Units
Ro-Ro traffic	327.065 ITUs
Passengers	3,5 M Pax

Total traffic in the Port of Barcelona 2004-2014
(Thousands of tons)



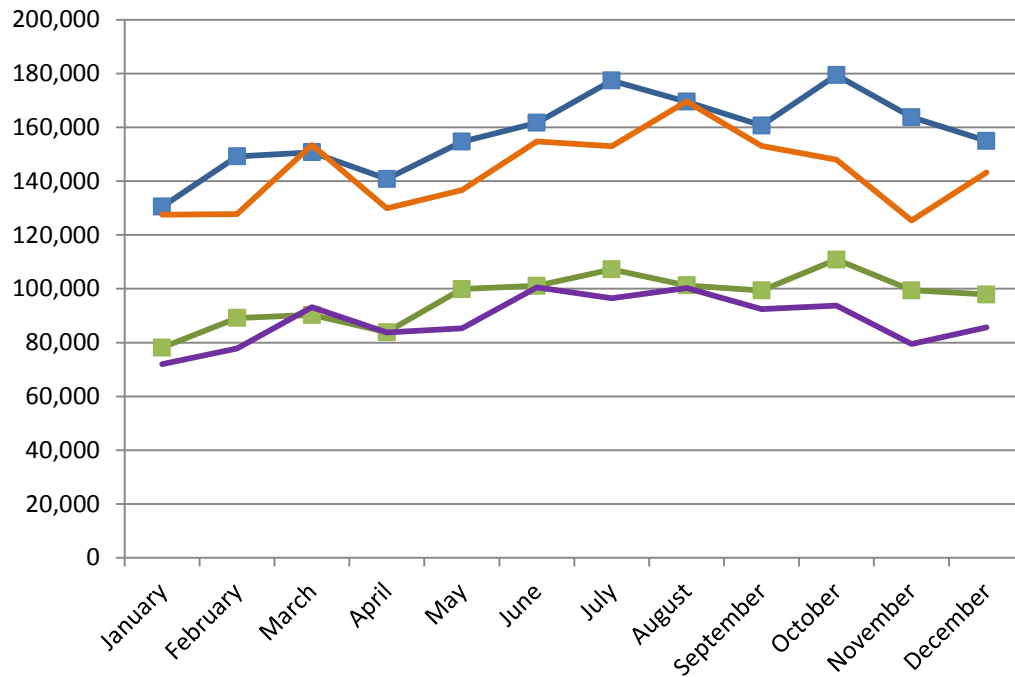
Over 30% of cargo is to/from Mediterranean

→ A highly specialised port





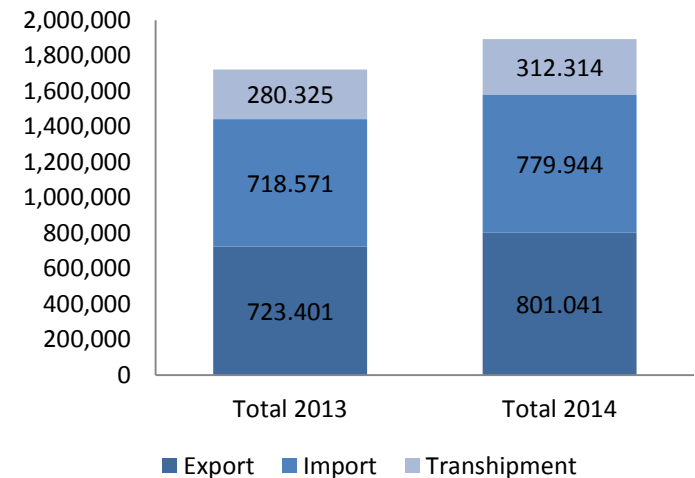
Port of Barcelona statistics. TEU traffic



Total traffic 2014: 1.9 M Teu
9,9 increase vs. 2013

■ Total TEU 2014
■ Total TEU 2013
■ Full TEU without T/S 2014
■ Full TEU without T/S 2013

	Total 2013	Total 2014	Variation (%)
Export	723.401	801.041	10,70%
Import	718.571	779.944	8,50%
Transshipment	280.325	312.314	11,40%
Total Traffic	1.722.296	1.893.299	9,90%





A diversified port: traffic distribution areas





Port de Barcelona: strategy

Main logistics hub in the Southern Europe and the Mediterranean



**Enlargement
of the Port and
Logistics areas**



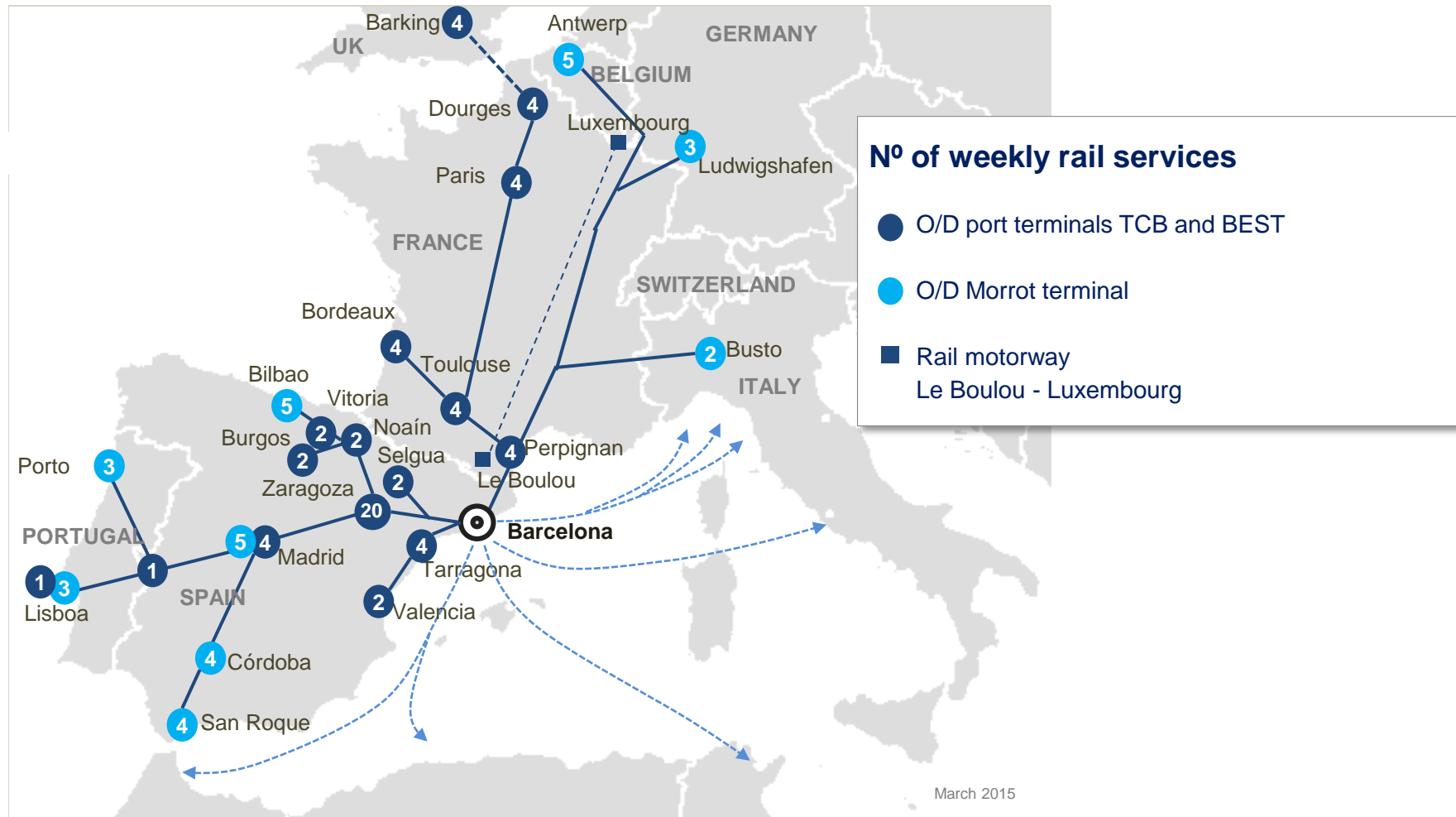
**Improved
connectivity with
hinterland and
foreland**



**Client-oriented:
competitiveness, quality,
proactivity, efficiency**



Railway services from the Port of Barcelona to the Iberian Peninsula and Europe





Enlargement of the Port and Logistics areas

Developments and international private investments



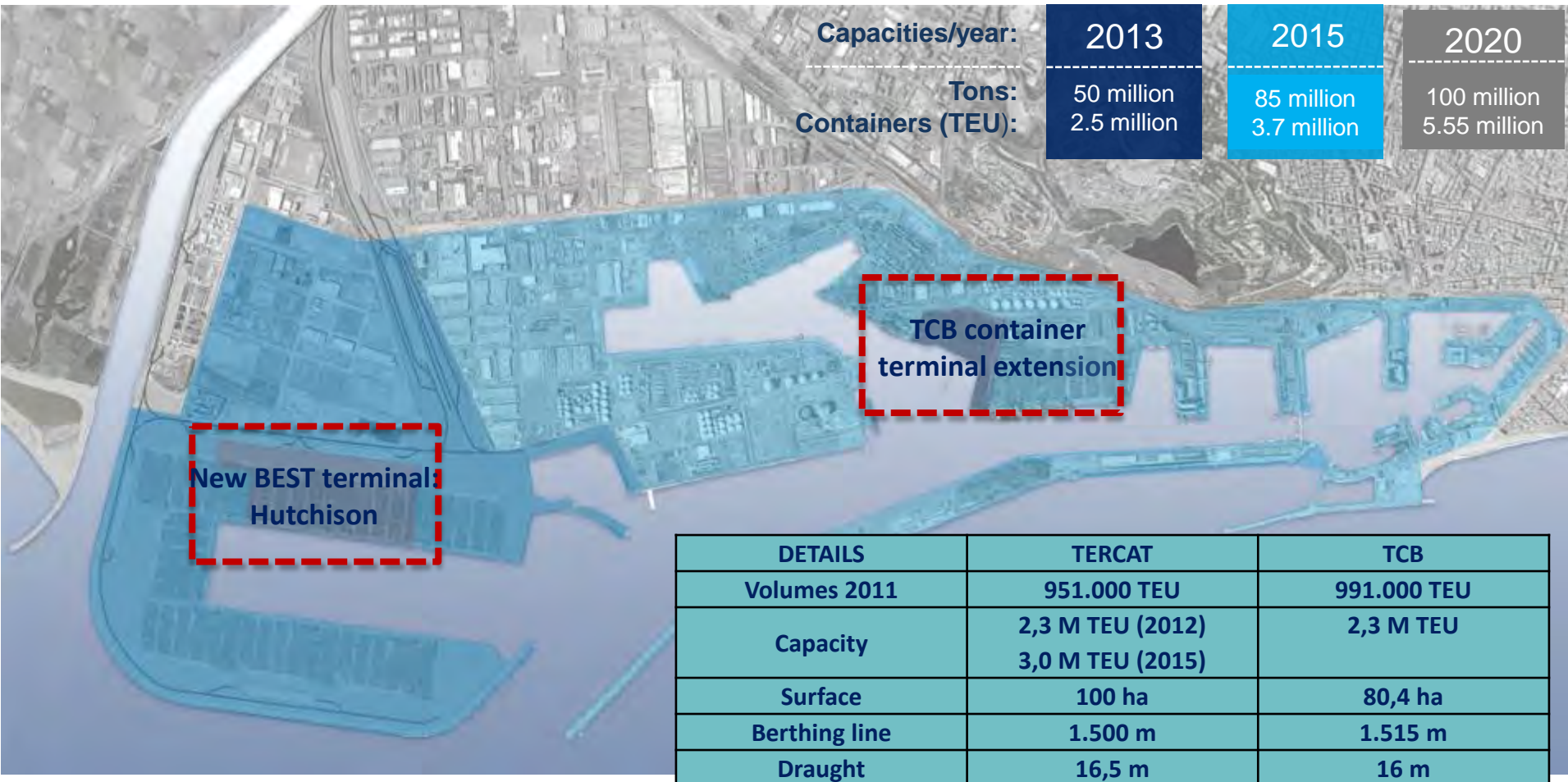
Ongoing projects	Investment (million €)	Finished projects	Investment (million €)
1 New BEST terminal (Hutchison)	500	11 Terquimsa: capacity expansion	10,4
2 Marina Port Vell	35	12 Grimaldi Terminal Barcelona	22
3 Marina Nova Bocana	30	13 Total Petrochemicals Iberica (styrene pipe)	1,1
4 Tepsa: facility remodeling	14,45	14 Marina Barcelona 92	13
5 Expansion of container terminal (TCB)	27,3	15 Tradebe	60
6 Improved processing plant (Bunge)	13,2		
7 Iberpotash	20-30		
8 Expansion cruises terminal D	5,25		
9 New cruise terminal E	42		
10 Manipuladora de mercancías SL (SAMER)	9,2		

More than 2.000 million € of private investment engaged 2000-2014



Enlargement of container terminals

More surface, more capacity: more opportunities





Enlargement of container terminals

BEST

DATA 2015

BEST 2015	
Capacity	1.5 M TEU
Area	79 ha
Berthing line	1.500 ml
Draught	16 m
Quay cranes	11
Blocks	24
ASC	48
Shuttle carriers	26
RMG	2
Reefer plugs	1700

Railway terminal	
8	Rail tracks (750mts each)
Total rail tracks of 21Km (Mixed gauge UIC-Iberian)	
2	RMG

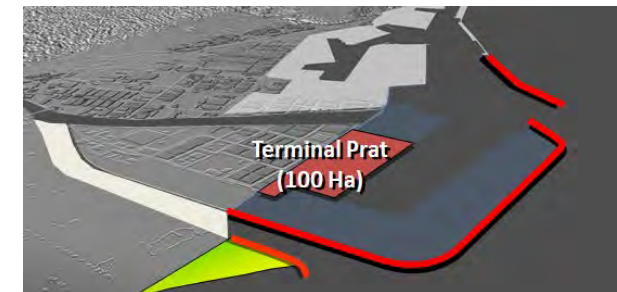
BEST End of Works phase 1	
Capacity	2.6 M TEU
Area	100 ha
Berthing line	1.500 ml
Draught	16 m



First semi-automated terminal in the Mediterranean

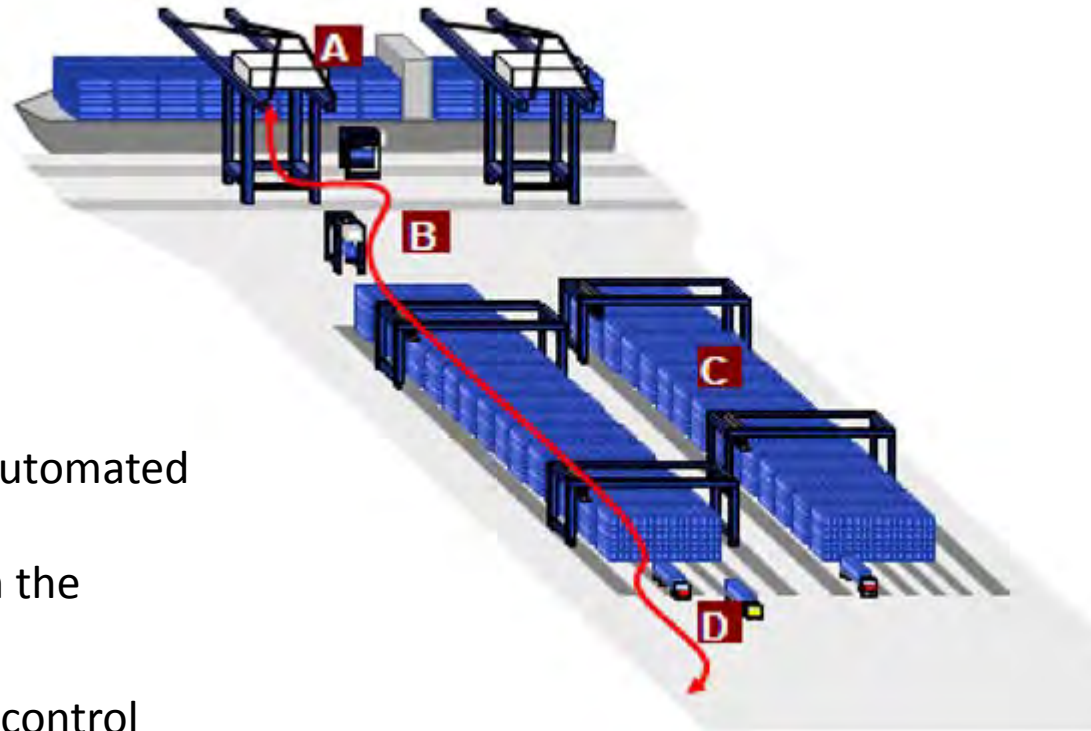
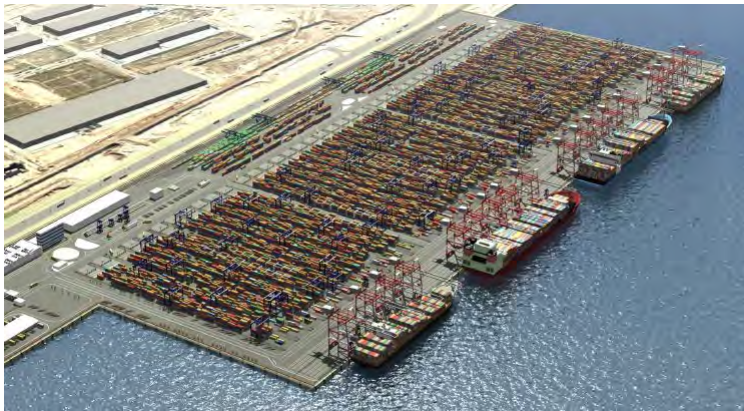


BEST terminal: enlargement process





Optimising operations: increasing productivity



- A. Ship operations
- B. Horizontal movements with non-automated Shuttle carrier
- C. Automated operations with ASC in the stockage area
- D. Land side operations with remote control



Enlargement of container terminals

TCB

TCB has increased the height of 3 Super Post Panamax up to 47m under spreader

DATA 2015

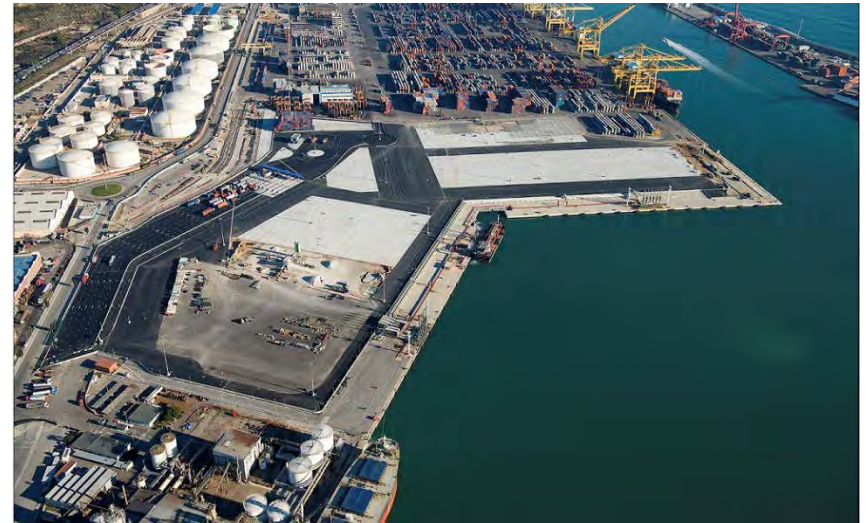
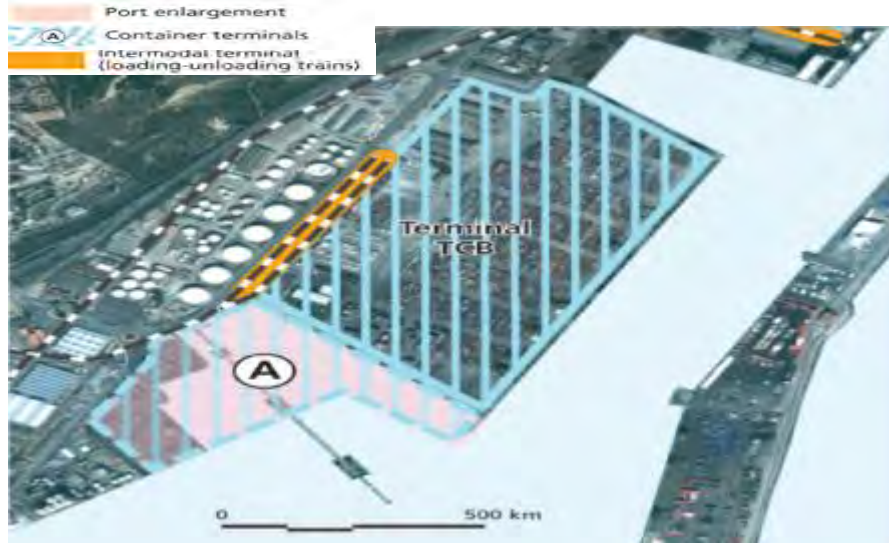
TCB terminal	
Capacity	2.3 M TEU
Area	80,4 ha
Berthing line	1.515 ml
Draught	16 m
Quay cranes	13
Reach Staker	3
Fork lift	10
Straddle carrier	62
Reefer plugs	486

Railway terminal
6 Rail tracks (750mts each) (Mixed gauge UIC-Iberian) 3 RMG





TCB: Growing operational capabilities



1. Crane height of 3 Super Post Panamax will be increased from 41 to 47m
2. Online berthing windows booking system, avoiding vessel berthing delays
3. Visual container inspection system (OCR), vessel to terminal and terminal to truck EIR, avoiding and reducing cargo and container claims to a minimum
8 Lanes to gate in / 4 Lanes to gate out
4. Highest crane productivity per hour in the Mediterranea (35 moves/crane/hour)
5. Receiving & Delivery daily average 2,500 truck moves



TCB: Intermodal facilities

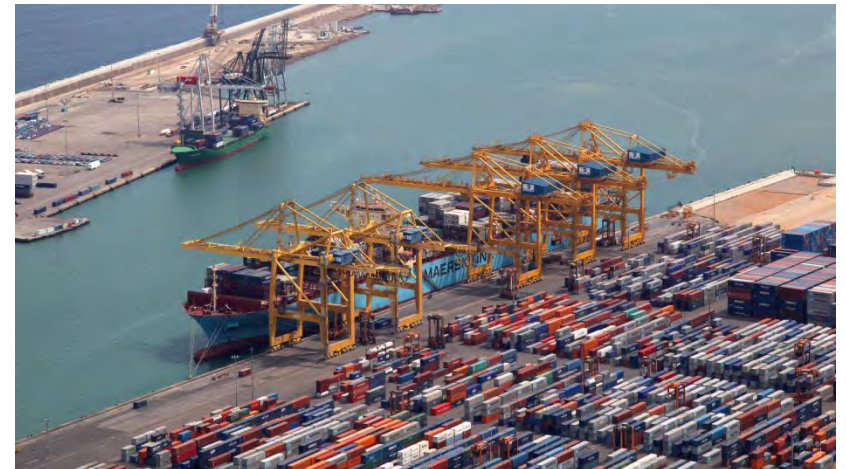




Focused in high productivity



- The Port of Barcelona got award at the JOC Europe Port Performance Conference
- 3rd position in terms of productivity among European ports.
- The two container terminals of the Port of Barcelona are among the first 10 terminals in Europe, with a productivity between 76 and 80 movements/ship/hour.





Media are aware


Port de Barcelona

Press Release
21 November 2014

Port of Barcelona ranks third for productivity

The Port's two container terminals, TCB and BEST, feature among the top ten in Europe's productivity index

The commitment by the terminals to improve operations has paid off. The JOC report corresponding to the first half of 2014 ranks **TCB 8th European terminal for productivity** with 80 movements per hour, with **BEST coming in 9th** with 76 movements per hour.



Port de Barcelona

Cruises: Excellence in operations. Forth World Port i cruise traffic

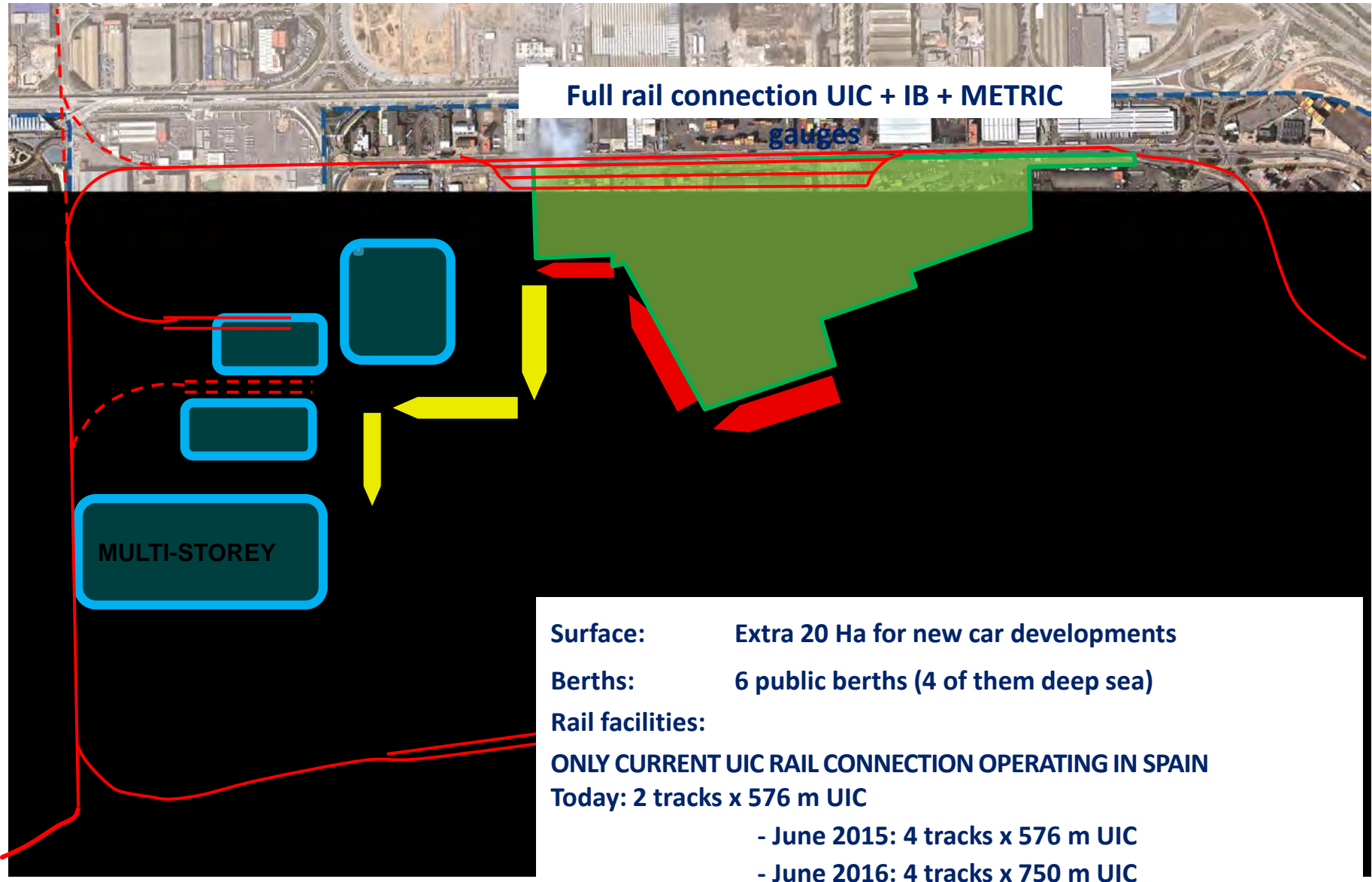
Two awards by *Cruise Insight Magazine* during the *Cruise Shipping Miami trade Show 2015*

- ❑ “Best turnaround port operations”
- ❑ “Most Efficient Terminal Operations”





Port infraestructures: Fully developed and connected car terminals





Infrastructure Costa Quay





Development of rail facilities in the port terminals.

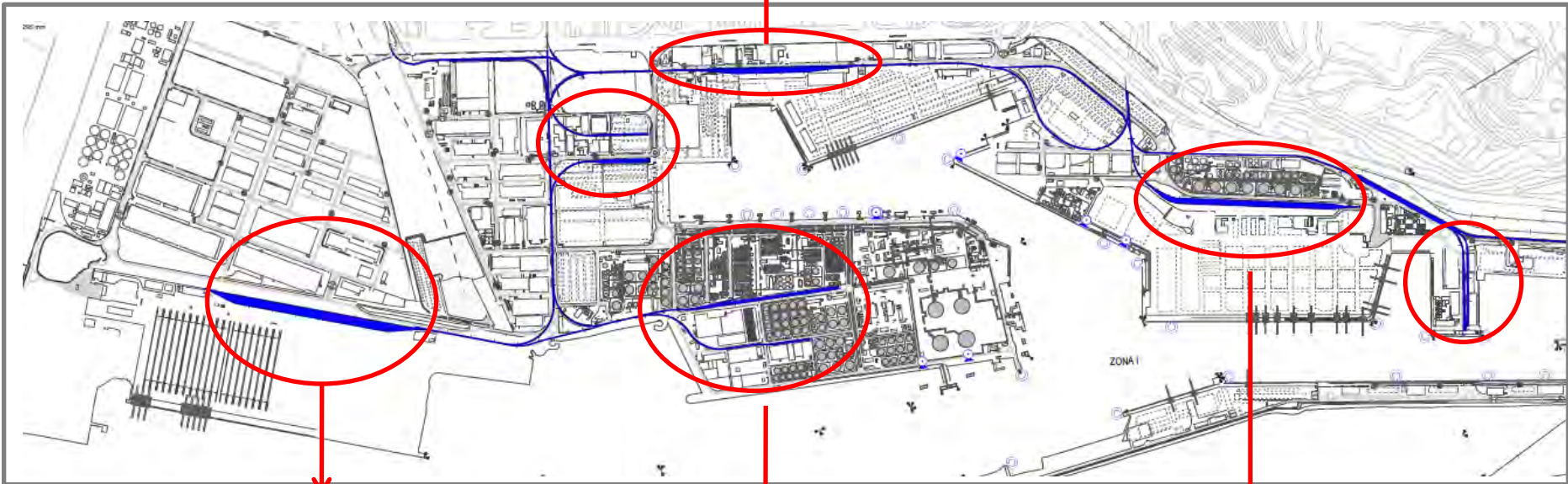
Current standard **UIC** tracks

CAR TERMINALS

TODAY: 1 + 1 tracks UIC (600 m)

2015: 1 + 3 tracks UIC (600 m)

2016: 1 + 3 tracks UIC (750 m)



BEST

8 Tracks UIC (750 m)

ENERGY WARF

TODAY: 3 tracks UIC (680 m)

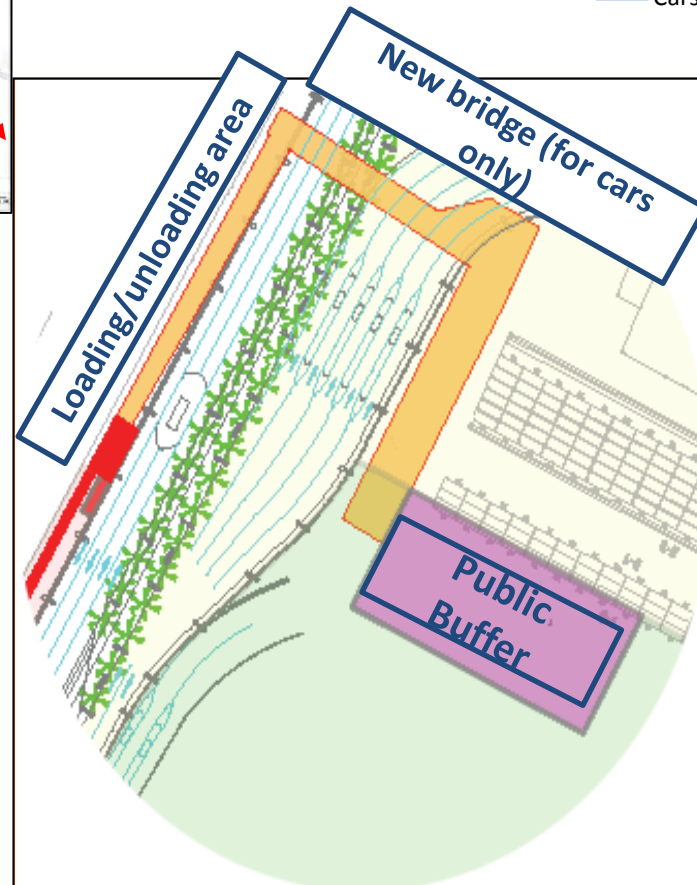
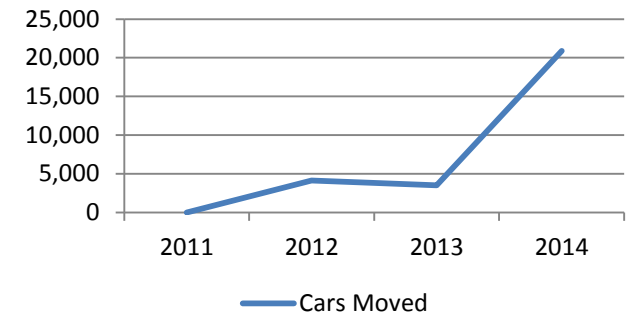
300 m AWAY FROM CAR TERMINAL

TCB

6 tracks UIC (750m)



Infrastructure Costa Quay



Vehicle
Movement in
2014: **20,904**

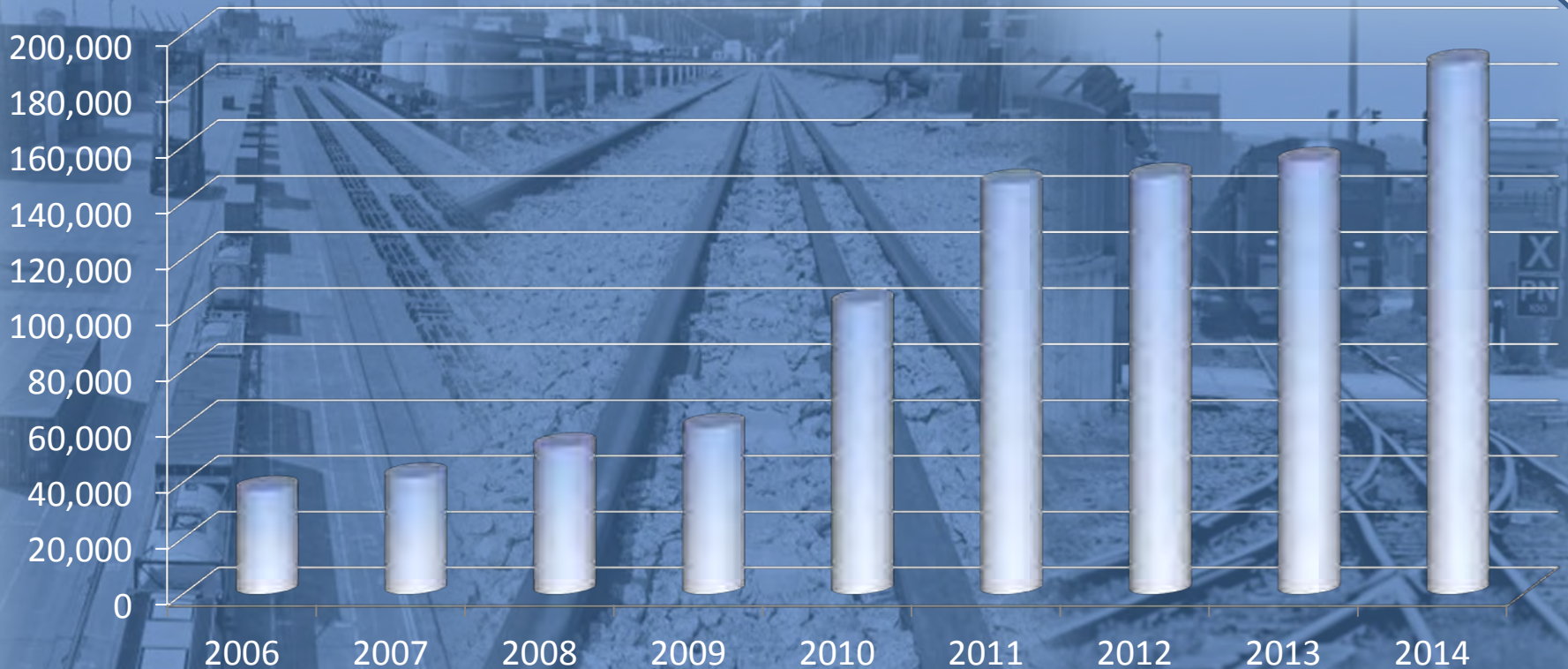
Terminal details:

- 14,000 m² surface
- Metric & Spanish gauges
- 470 m free on straight line
- Exclusive discharging runaway
- New bridge allowing direct access to terminal compound
- Public buffer available

Vehicles moved since the beginning of the operation: 28.542



Rail traffic evolution in the Port of Barcelona



	2006	2007	2008	2009	2010	2011	2012	2013	2014
TEUs	37.070	41.770	52.562	59.544	103.898	146.685	148.926	154.522	189.553
TOTAL increase	-23,00%	13,00%	26,00%	13.2 %	75,00%	41,00%	1,50%	+3.7%	22,67%
Railway share over total traffic	2,50%	2,60%	3,00%	5,00%	8,00%	10,70%	11,32%	10,70%	11,99%

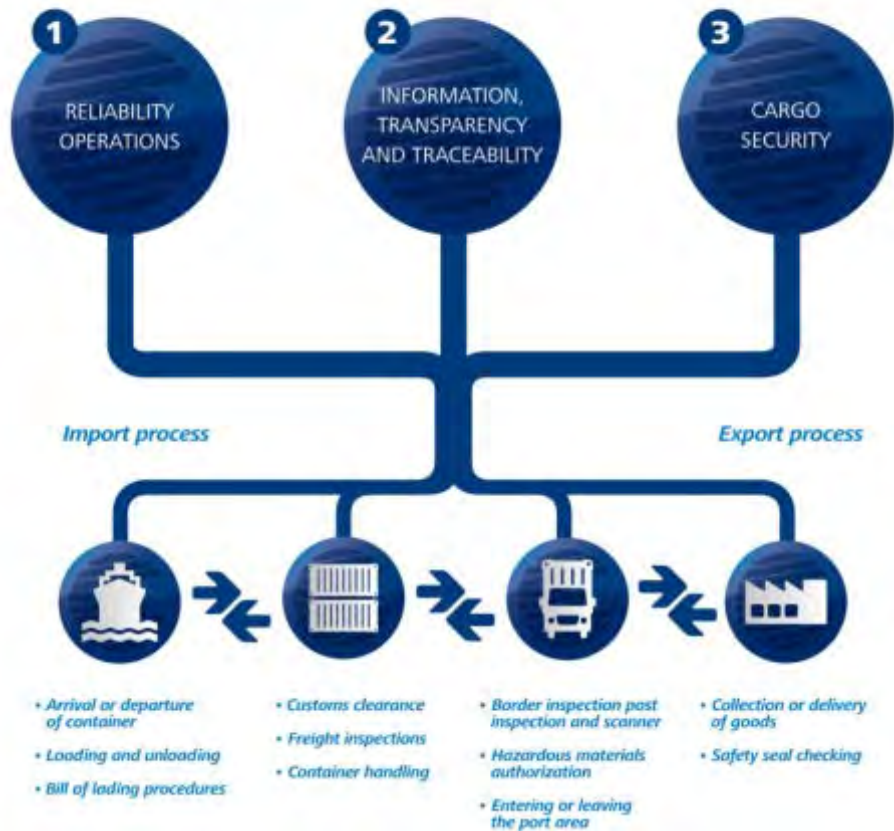


Efficiency Network

Efficiency Network is a commitment to quality and efficiency of service between the companies and institutions involved in maritime transportation at Port de Barcelona.

78 Certified companies: Freight Forwarders, Shipowners, Transport companies, Terminals

Efficiency commitments





Quality commitments

RELIABILITY OF OPERATIONS

- Delivery and collection of goods at committed time
- Customs Clearance within 17 hours.
- When BIP inspection required, Custom Clearance of goods within 25 hours.
- Bill of lading available 10 hours after ship's departure.

INFORMATION AND TRANSPARENCY

- Provide reliable information concerning operations and cargo in the Port.

SECURITY OF GOODS

- No incidents on goods during their stay at Port.
- Import containers will be delivered with the same seal they had at their departure from the terminal.

Breach of these commitments will be compensated with 60€ to 450€



Port de Barcelona