



# Aktau International Airport JSC



# MULTI-MODAL LOGISTICS AND AIR CARGO TRENDS

---

**The rise of e-commerce drives demand for fast air freight transportation**

- Logistics is being revolutionized by AI 2.0, enhancing efficiency and decision-making

**Sustainability**

- Companies like Maersk are reducing carbon emissions through integrated sea, land, and air transport to meet ESG goals

**E-Commerce Growth**

- The rise of e-commerce drives demand for fast air freight transportation

**Smarter Cold Chains**

- Innovations in temperature control improve the transport of perishables

**Integrated Multi-Modal Solutions**

- Combining air, sea, rail, and road transport enhances flexibility and efficiency, with leaders like DHL and Maersk

## AKTAU AIRPORT'S ROLE

---

- Strategic Location: Positioned on the Caspian Sea, it connects Central Asia with Europe and Asia, ideal for integrated air, sea, and land transport.
- Future Focus: Emphasizing digital integration, sustainability, and infrastructure upgrades to maximize its logistics potential.

## CARGO AIRLINES ROLE IN MULTIMODAL LOGISTICS

---

- Technological Integration: Utilizing AI and big data for forecasting and efficiency.
- IoT for Tracking: Implementing real-time tracking for better supply chain visibility.
- Sustainability: Reducing carbon emissions through green logistics solutions.

## AKTAU AIRPORT'S STRATEGIC POSITION

---

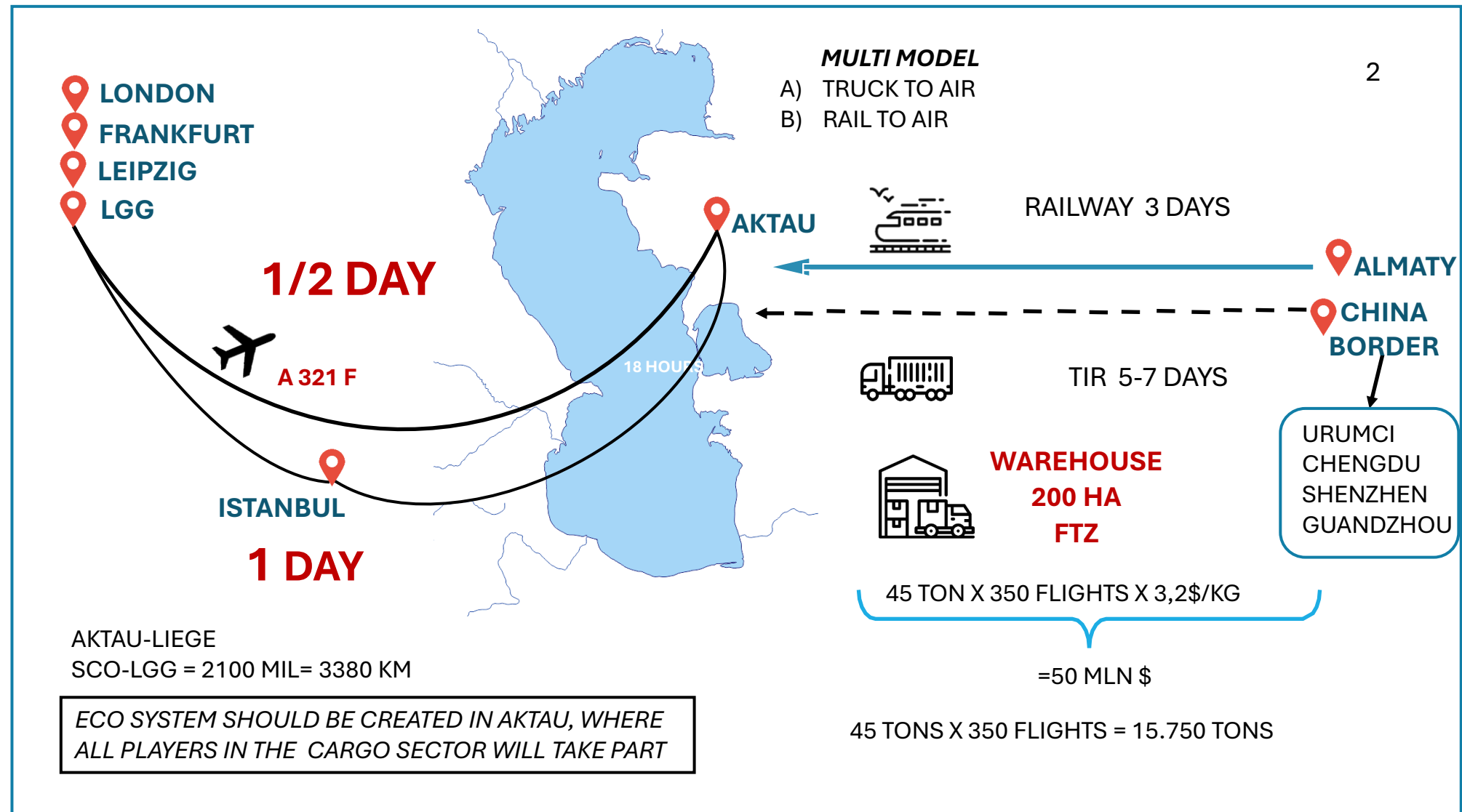
- Connecting Routes: Supports routes between Europe and Asia with efficient cargo handling and transshipment.

# TRANS-CASPIAN INTERNATIONAL TRANSPORT ROUTE



## TRANS-CASPIAN ROUTE

China - Kazakhstan - Azerbaijan - Georgia - Turkey/ Ukraine/ Poland/ Romania/ Italy/ EU countries



## CASE STUDY: AKTAU AIRPORT

- Strategic Location: Critical junction for European and Asian trade routes.
- Facility Upgrades: Enhancing cargo terminals for efficient transfers.

## INTEGRATION WITH THY CARGO, YTO AND OTHER CARGO AIRLINES

- Collaborative Enhancement: Leveraging network and technology for streamlined operations.

## SPEED VS. COST IN MULTIMODAL LOGISTICS

### Type of Goods

- Perishables and High-Value Items: Speed is crucial for items with limited shelf life.
- Bulk Commodities: Cost efficiency is key for non-perishable, lower-value items.

### Industry Requirements

- E-commerce: Speed is essential to meet consumer expectations.
- Manufacturing and Retail: Balance of speed and cost for efficient inventory management.

### Market Dynamics

- Competitive Advantage: Speed can differentiate companies in competitive markets.
- Cost Sensitivity: Prioritizing cost in cost-sensitive markets to maintain profitability.

### Strategic Goals

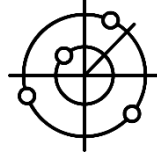
- Customer Satisfaction: Prioritizing speed for quick delivery and better customer experience.
- Operational Efficiency: Focusing on cost to optimize supply chains.

# ADVANTAGE OF AKTAU

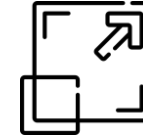
---



**GOOD LOCATION  
BETWEEN EUROPE  
AND ASIA**



**OPEN SKY MODE  
(5 DEGREES OF FREEDOM)**



**THE PRESENCE OF AN ADJACENT  
TERRITORY TO EXPAND  
THE CAPABILITIES OF THE AIRPORT**



**ACCESS TO THE  
KAZAKHSTAN-TURKMENISTAN-IRAN  
RAILWAY (NORTH-SOUTH CORRIDOR)**



**AVAILABILITY OF ACCESS  
TO A MULTIMODAL  
TRANSPORT SYSTEM**



**AVAILABLE AREA FOR  
CONSTRUCTION SMART  
WAREHOUSE 50 000 M2**



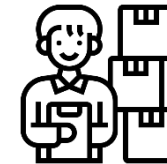
**FAVORABLE WEATHER  
CONDITIONS  
THROUGHOUT THE YEAR**



**RUNWAY - 3048 X 45 M  
25 STANDS 2 TAXIWAYS**



**WAREHOUSE AREA  
MORE THAN 2,500 M2**

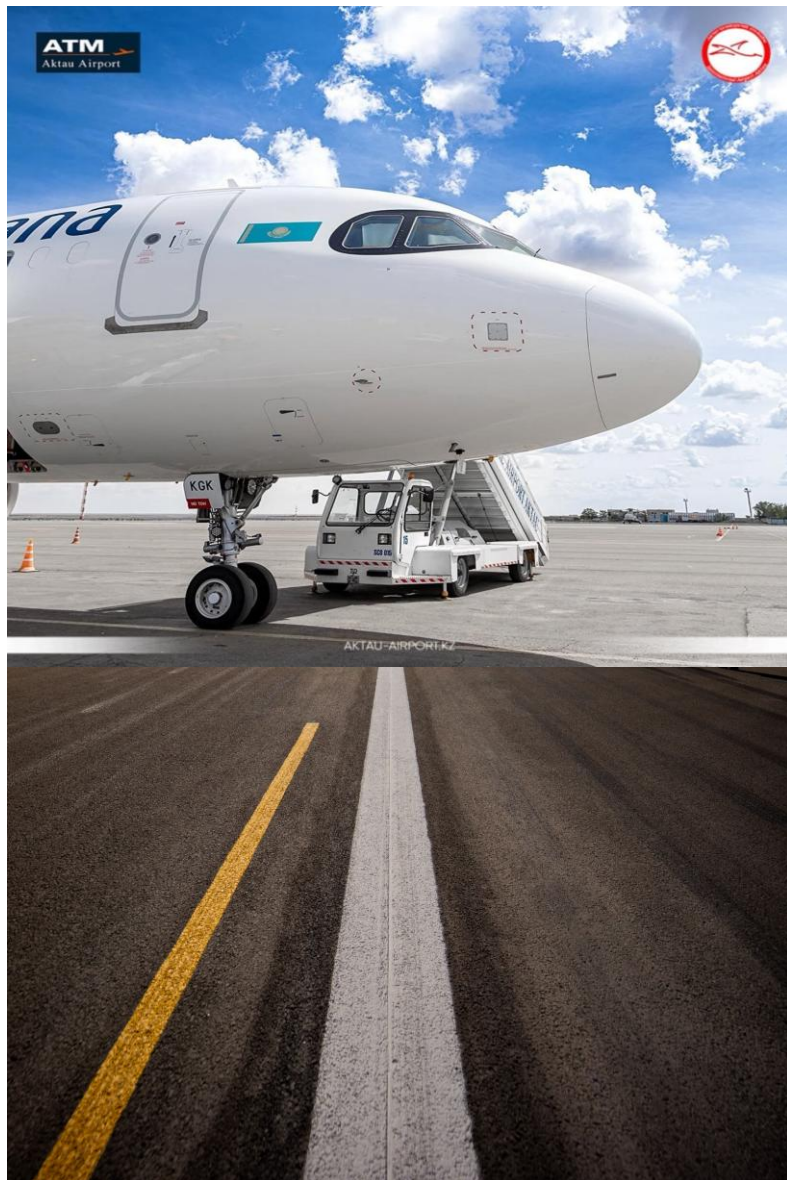


**TRAINED  
STAFF**



**24/7  
CUSTOMS CONTROL  
BORDER CONTROL**

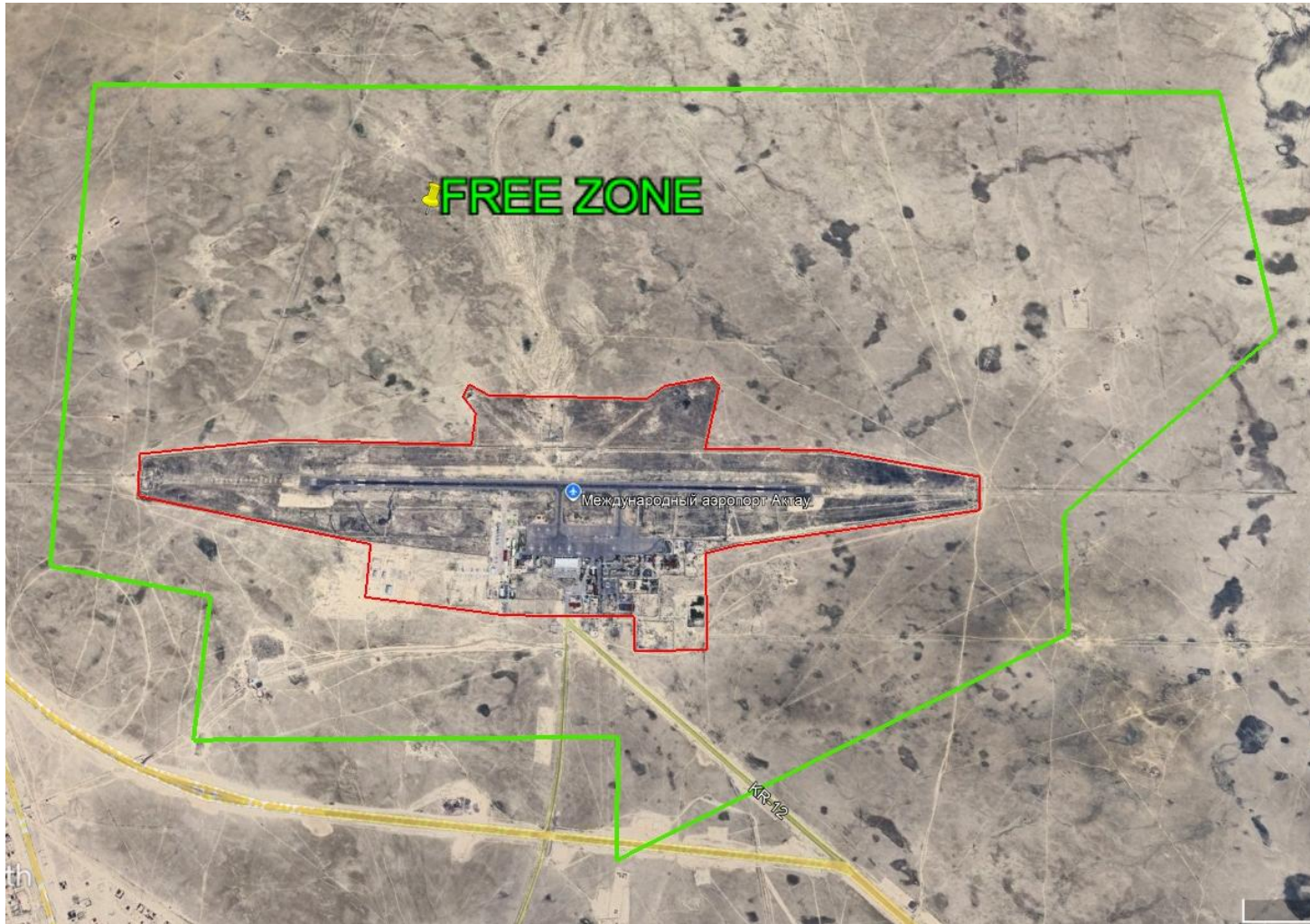
# AERODROME



## RUNWAY CHARACTERISTICS:

Code	<b>UATE / SCO</b>
Square	<b>486,6 Hectare</b>
Working hours	<b>24/7</b>
Location	<b>21 km from Aktau</b>
Time zone	<b>+ 5</b>
Runway length	<b>3048 m.</b>
Runway width	<b>45 m.</b>
Coating strength	<b>PCN 56/F/C/W/T</b>
	<b>Asphalt concrete</b>
Taxiways	<b>2</b>
Number of aircraft stands	<b>26</b>
Runway lights	<b>CAT I</b>
ILS, VOR/DME -	<b>CAT I</b>

## STRATEGIC AIRPORT LAND WITHIN FREE ZONE - READY FOR INVESTMENT



**AIRPORT LAND DEVELOPMENT IN FREE ZONE (SEZ AREA - 1 700 HA)**

### KEY ADVANTAGES:

- Located within the **Special Economic Zone (SEZ)** – tax and customs benefits for investors
- **1 700 ha of airport land** available for multi-modal logistics and air cargo development
- Suitable for **Cargo Village, MRO facilities, e-commerce fulfillment hubs, warehousing & distribution**
- Direct access to **airside/landside infrastructure**
- Ideal location for **multi-modal connectivity** and future expansion
- Accelerated procedures for foreign operators and logistics projects
- Opportunity for strategic partnerships and long-term development

# THANK YOU !

## Contacts

---

Address: 130000 Mangystau region  
Aktau International Airport  
E-mail: [office@aktau-airport.kz](mailto:office@aktau-airport.kz)  
Tel/fax +7 7292 609746  
+7 7292 609745

## Operation service

---

Tel/fax +7 7292 609775  
SITA-SCOBFXH-SCOOOXH  
AFTN-UATEAPDU

## Contact person

---

Zholdybayeva Meruyert  
Tel: +7 7292 609701  
Mob: +7 701 7972177  
E-mail: [deputy@aktau-airport.kz](mailto:deputy@aktau-airport.kz)

Guvenc Hamdi  
Tel: +90 532 3144538  
E-mail: [hamdi.guvenc@yda.aero](mailto:hamdi.guvenc@yda.aero)

