

AKTAU MARINE NORTH TERMINAL





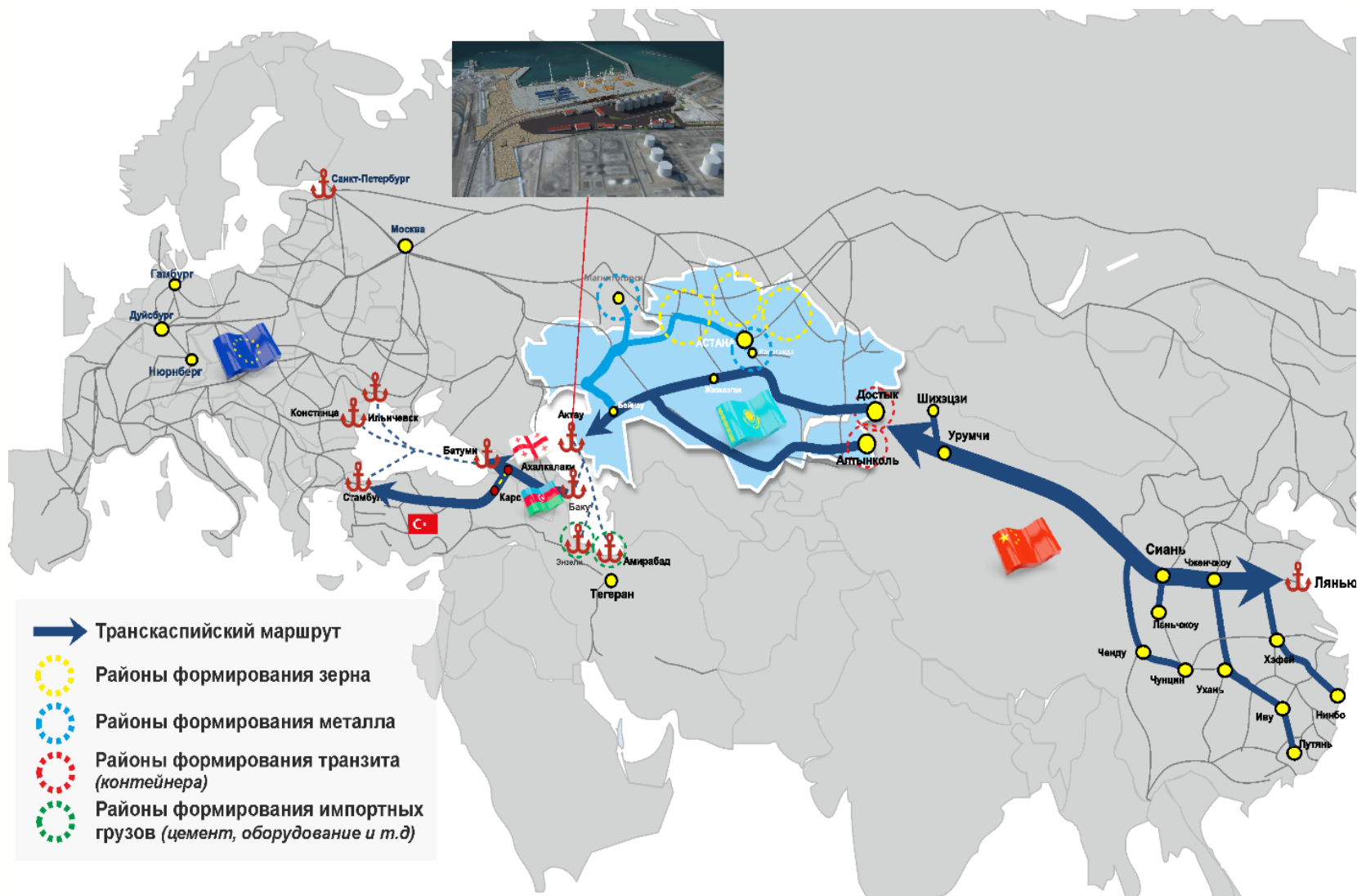
ABOUT US

- *located on the eastern coast of the Caspian Sea*
- *connects Central Asia with Europe and the Middle East*
- *access to major trade routes and modern infrastructure*
- *ensure the smooth transshipment of goods across borders*

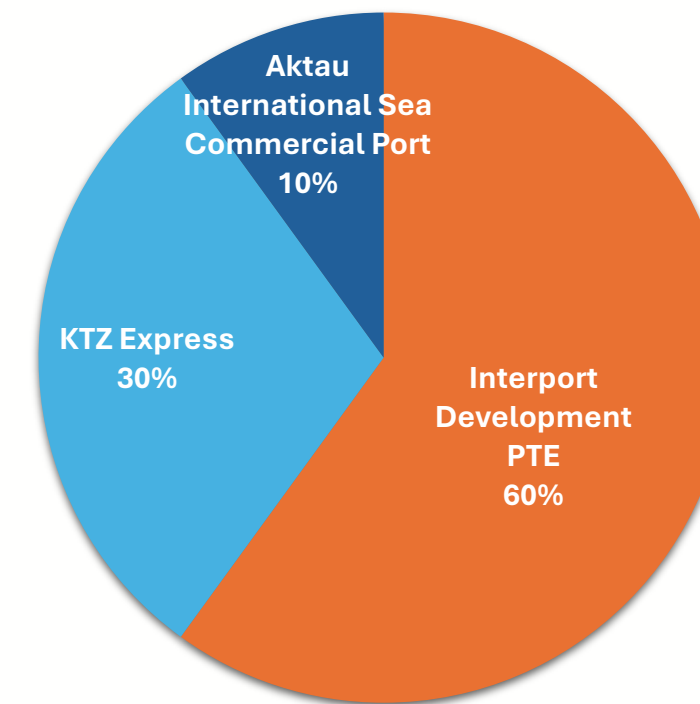


**AKTAU MARINE
NORTH TERMINAL**

- *capacity of up to 3 million tons of cargo per year*
- *we offer reliable, efficient, and high-performance services*
- *support of global trade and strong international partnerships*



Ownership



■ Interport Development PTE
 ■ KTZ Express
 ■ Aktau International Sea Commercial Port

OUR PROJECT

01 MODERN INFRASTRUCTURE

- *Area of the territory - 22 hectares*
- *Modern equipment*
- *Handling various types of cargo, including general cargo, grain, and containers*

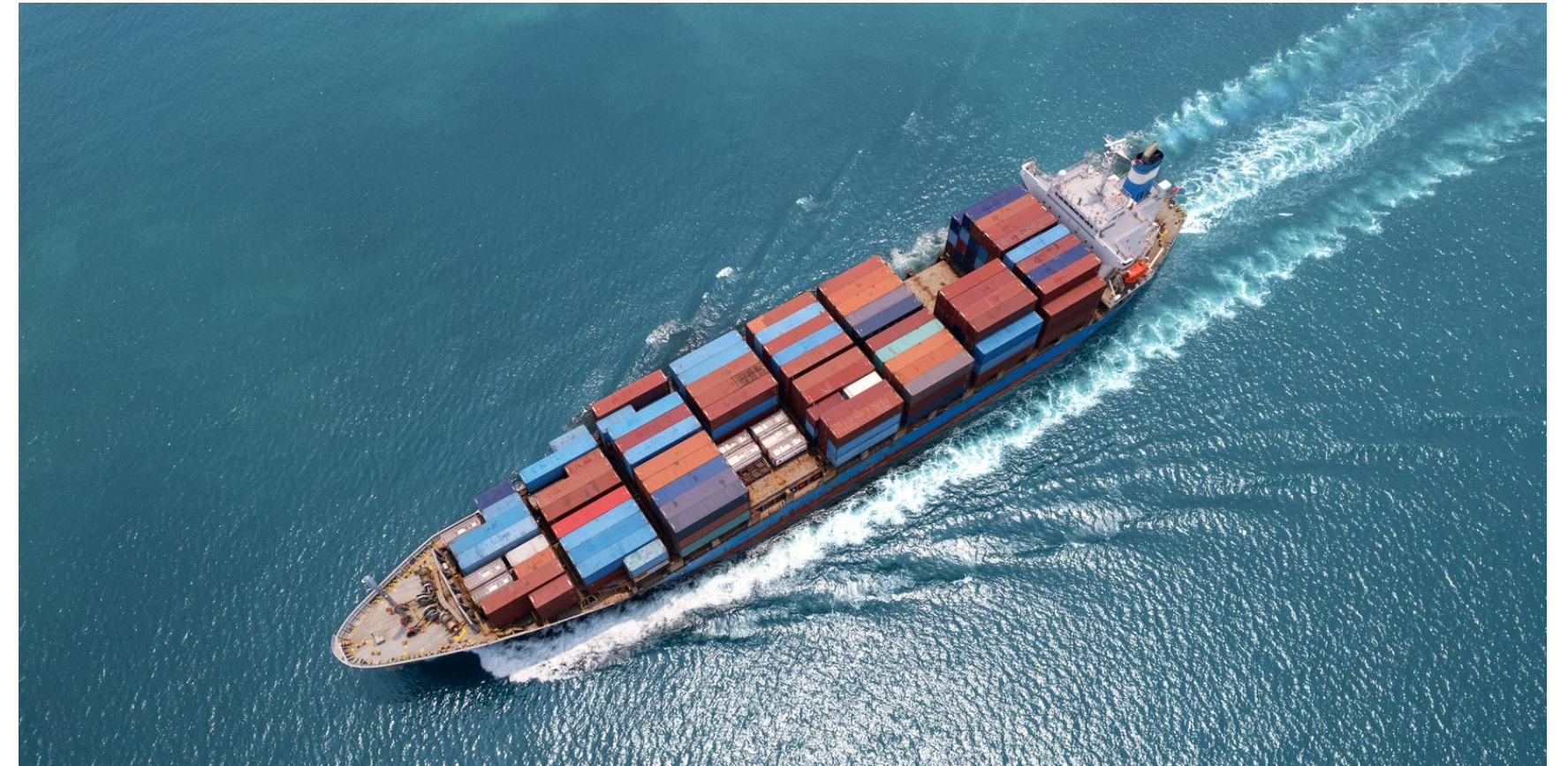
02 HIGH CAPACITY

Total transshipment capacity - 3 mln. tons/year, including:

- *Grain cargo- 1 mln. tons/year (one-time storage in silos 60.000 tons)*
- *General cargo - 2 mln. tons/year*
- *Container complex with one-time storage up to 6 000 TEU and 70 thousand TEU/year*

03 STRATEGIC EFFECTIVENESS

- *No. of simultaneously processed vessels - 4 vessels*
- *Modern warehouse infrastructure*
 - *100 thousand m² of open space*
 - *900 m² covered space*
- *Optimized storage - 170 000 tons allows for efficient cargo handling and significantly increases throughput capacity.*



Technical advantages

01 FLEXIBLE AND SCALABLE CARGO HANDLING

- Berth No. 18, 21, 22, 23
- Depth of berths - 4,8 m.
- Total length - 582 m.
- Length of access roads - 4 213 m.
- Capacity of access roads - up to 120 wagons

02 CUSTOMIZED LOGISTICS SOLUTIONS FOR A VARIETY OF CARGOES

- Grain products (barley, wheat, legumes and etc.)
- 20, 40, 45, 53 - foot containers
- Refrigerated containers
- Tank containers
- Open-top containers

Total area of open space storage – 100 000 m²



1. Container yard
2. Cargo complex
3. Grain complex
4. Berth for transshipment
5. Access roads



CLARK



LIEBHERR



FERRARI

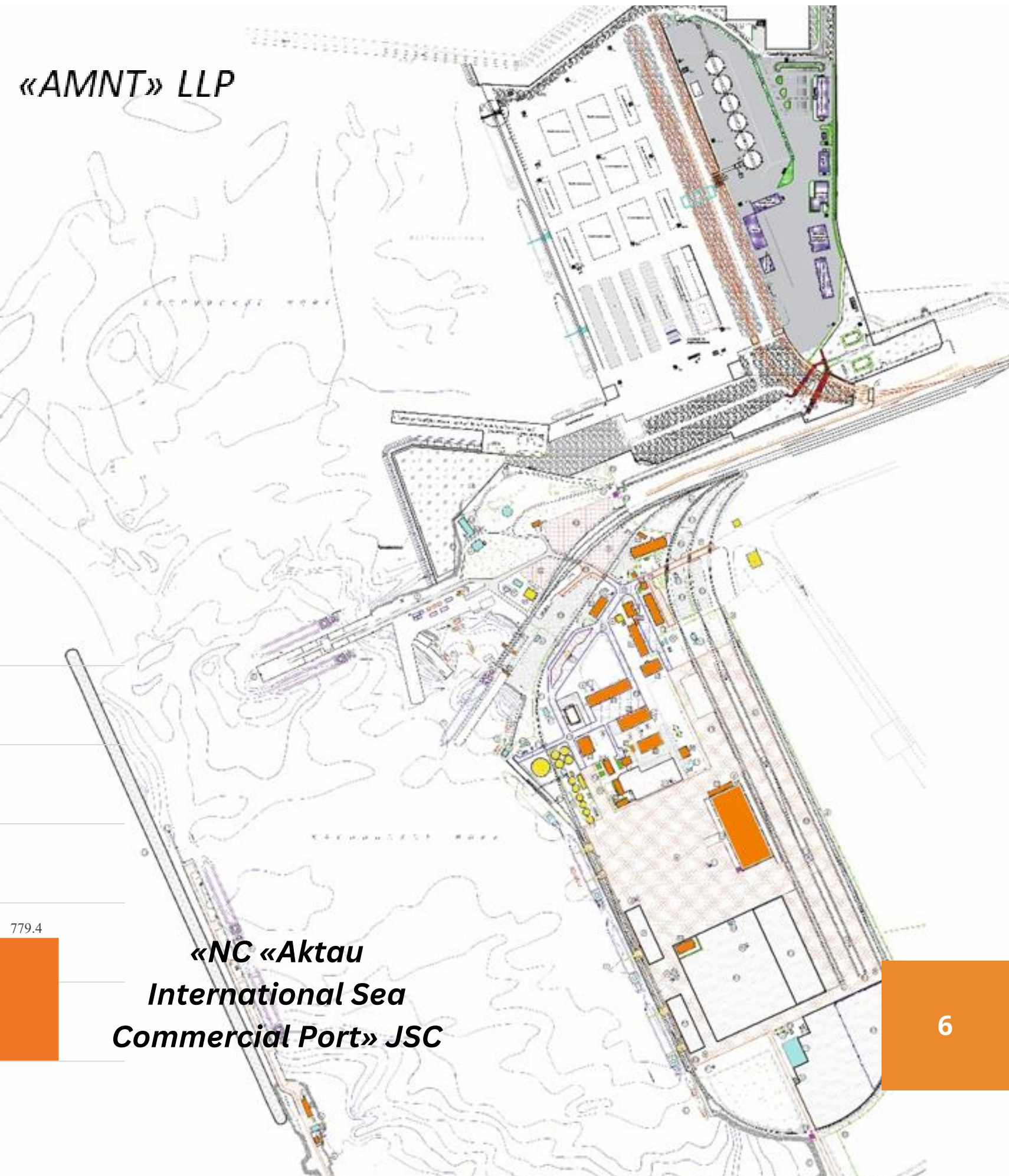
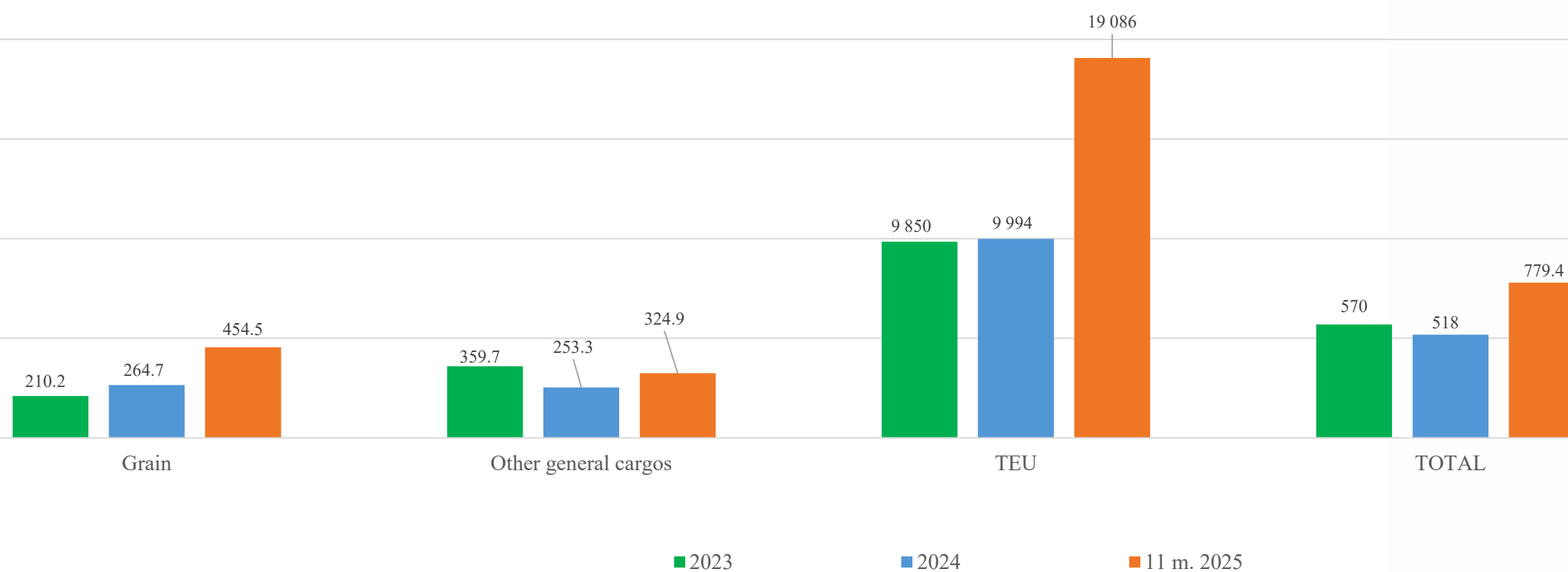
*CLARK forklift (2 to 5 t.) – 16 units;
 FERRARI forklift (16 t.) – 4 units;
 FERRARI reach stacker (45 t.) – 4 units.*

*Mobile crane LHM-180 (64 t.) - 1 unit;
 Mobile crane LHM-280 (84 t.) - 1 unit;
 Portal full-circle crane LPS-180 (64 t.) - 2 units;
 RMG crane (41 t.) – 1 unit;
 RTG crane (41 t.) – 1 unit.*

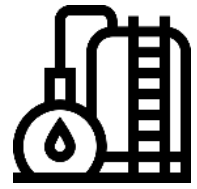
*FERRARI terminal tractor – 6 units;
 Trailer (60 t.) – 6 units.*

DYNAMICS OF CARGO TRANSSHIPMENT 2023-2025

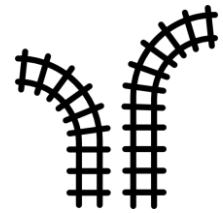
Volumes of cargo transshipment, thousand tons	2023	2024	11 m. 2025
Grain	210,2	264,7	454,5
Other general cargos, inc.	359,7	253,3	324,9
Containers, TEU	9 850	9 994	19 086
TOTAL	570,0	518,0	779,4



CONSTRUCTION OF VEGETABLE OIL TERMINAL



- *Construction 3 metal. Reservoir (6 000 m3);*



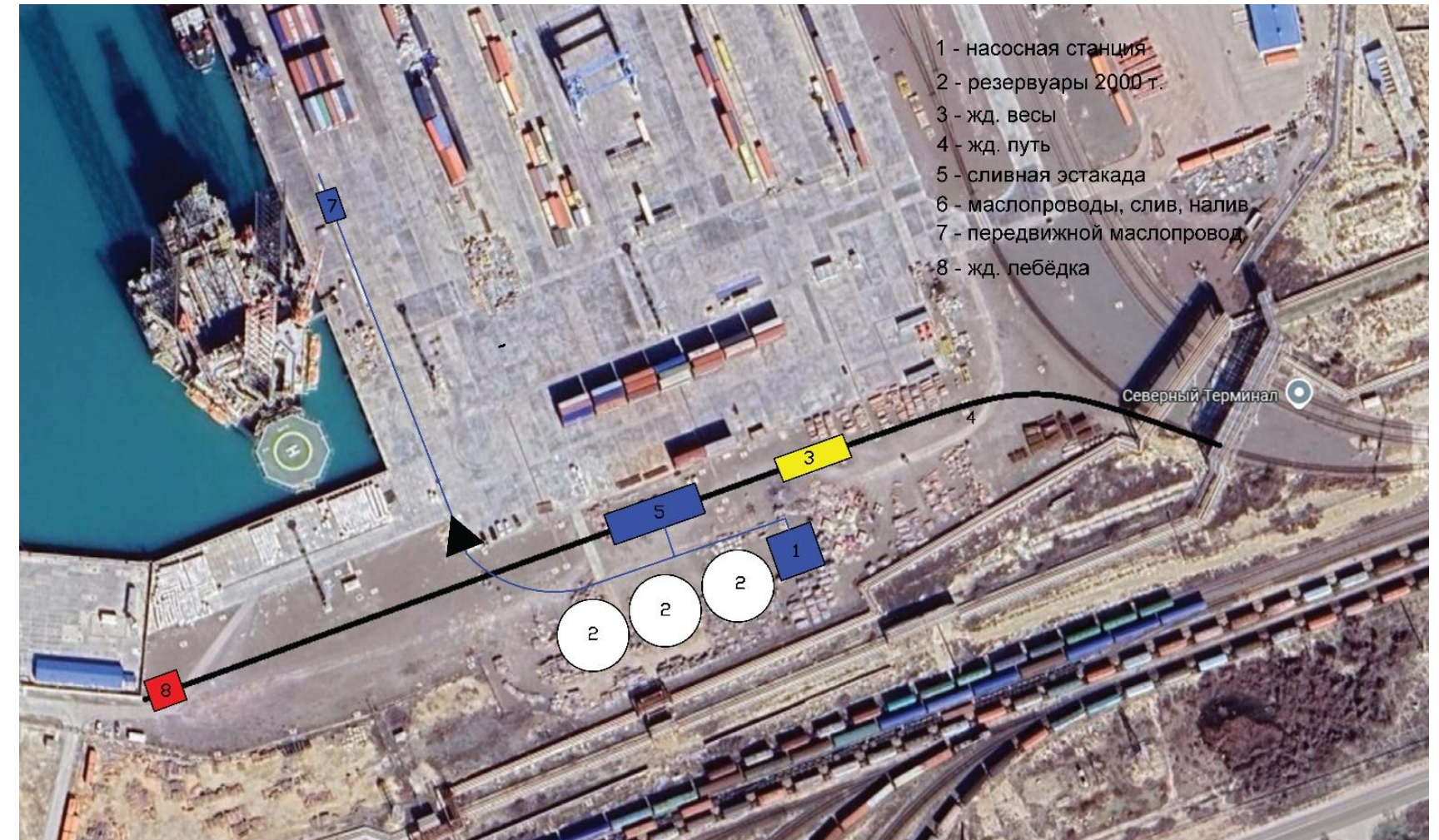
- *Construction of railway to the terminal;*
- *Total length – 450 r.m.;*



- *Delivery and installation manoeuvring device for moving tanks.*



- *Removal and installation of transport and technological equipment for loading/unloading from tanks: pipelines, power equipment, etc.*



SUMMARY AND BENEFITS

- *Fast construction and commissioning of the project;*
- *Absence of vegetable oil loading terminal in the ports of Kazakhstan.*
- *The possibility of direct transshipment or with the accumulation in tank.*
- *Annual transportation capacity – 100-200 thousand tons*



AKTAU MARINE
NORTH TERMINAL

**THANK YOU FOR
YOUR ATTENTION!**