

# ***Supercharging Port's Operations through Technology***

Transport Middle East – Abu Dhabi

29 Jan 2026

**[WWW.TMEIC.COM](http://WWW.TMEIC.COM)**

# Introduction



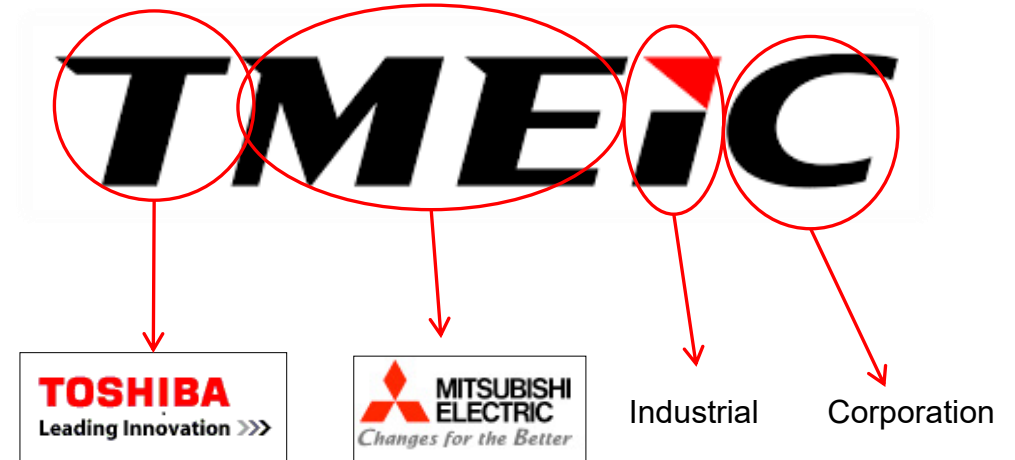
**Suraj Mishra**  
Business Development Manager  
TMEIC Industrial Systems

## Experience:

- |                  |  |
|------------------|--|
| 2009 – 2012      | Procurement Manager<br><i>Godrej &amp; Boyce Mfg Co Ltd</i>        |
| 2012 – 2025      | Head of Equipment & Automation Procurement<br><i>APM Terminals</i> |
| Since April 2025 | Business Development Manager, Industrial Systems<br><i>TMEIC</i>   |

## Education:

Mechanical Engineering – University of Pune  
Executive MBA – NMIMS, Mumbai



TMEIC is a global drive and automation systems supplier with manufacturing, engineering, sales, and service facilities around the World.

# We are enabling Green Transition across industries



**Ports & Terminals**

**On-Shore Power Supply  
Equipment  
Electrification &  
Charging  
Smart and Micro Grids  
Energy Storage Solutions  
Energy Management &  
Control**



**Metals**

**Drives and Inverters for  
Power control and  
management  
Automation solutions  
for enhanced mill  
performance**



**Renewable Energy  
Production**

**Inverters for Grid-Scale  
Solar  
Energy Storage Systems**



**Hydrogen  
Solutions**

**Rectifier Systems for  
Electrolysis  
Motors & Drives for  
Compression  
and Liquification**

# Supporting customers globally with our global footprint

## Global Presence

**19** Offices

**11** Factories

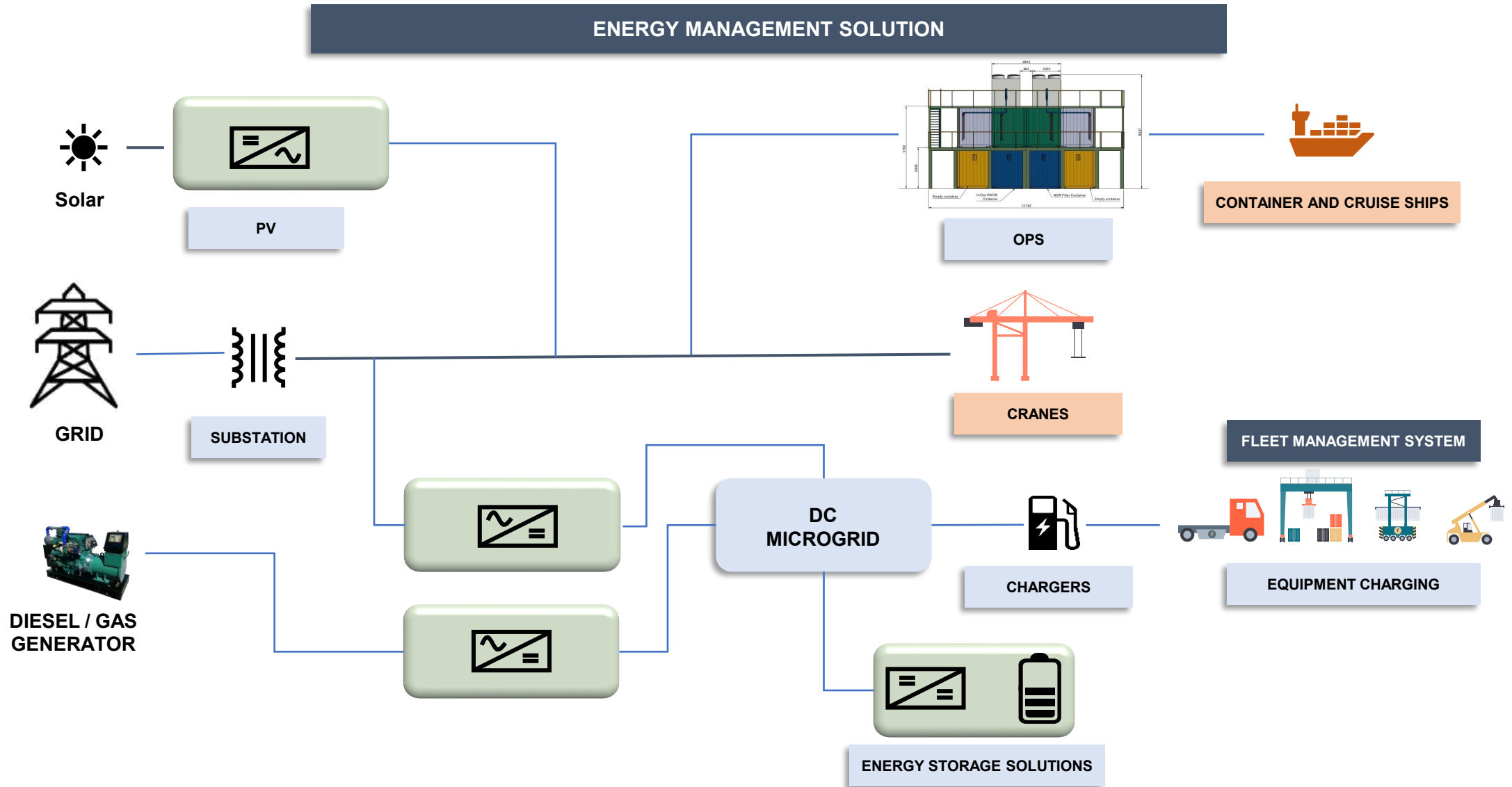
**30** Total Locations

**4,500+** Employees

**300+** Service Engineers

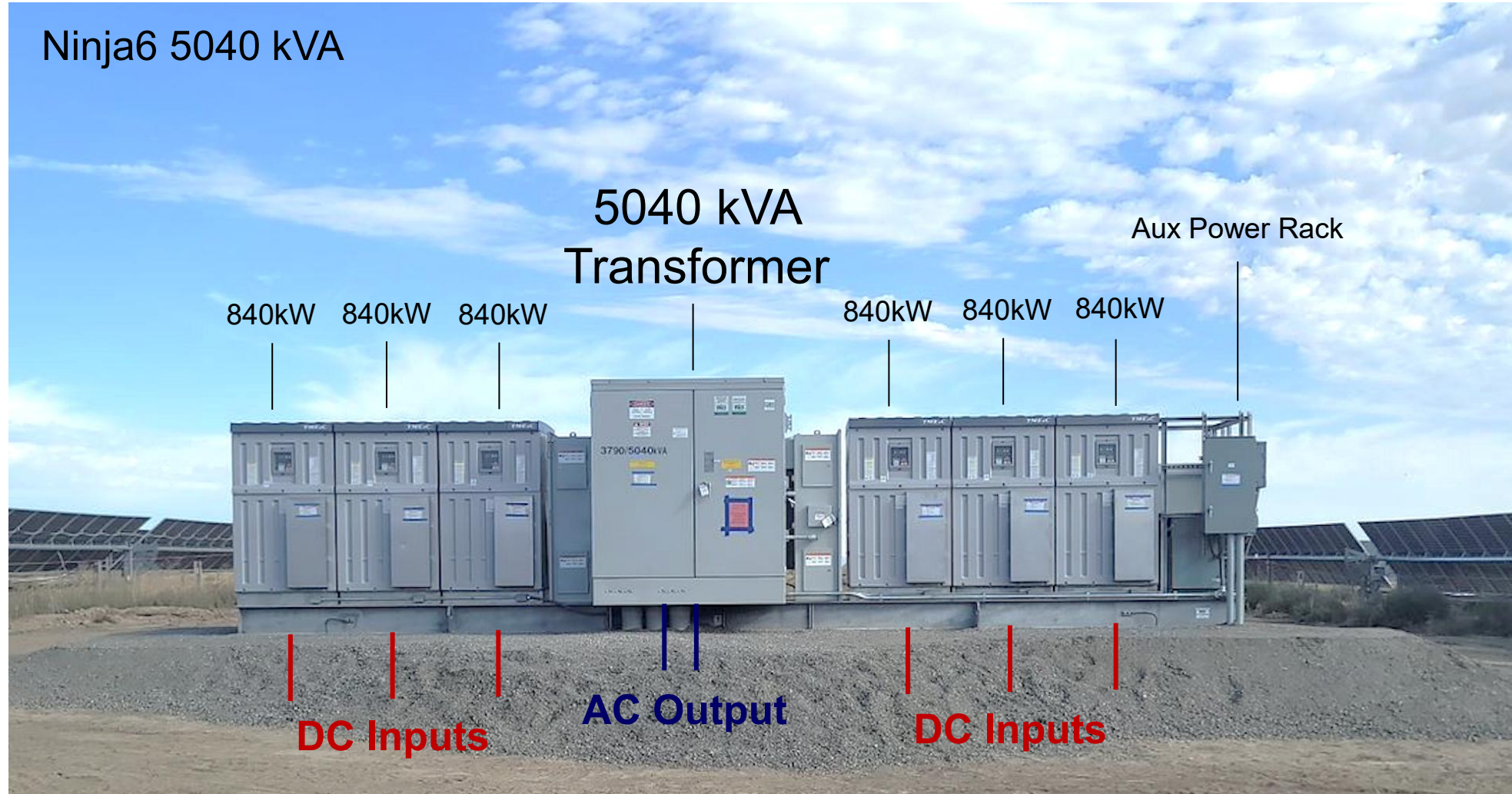


# TMEIC's Port Electrification Vision





# TMEiC PV Solution



# TMEIC Microgrid – Bangalore

- ▶ TMEIC's India factory – Manufacture PV inverters and ESS inverters
- ▶ This facility has its own “microgrid” with factory load, PV, ESS, & energy management





# TMEiC – MaxShorePower™ - 8 MVA Configuration



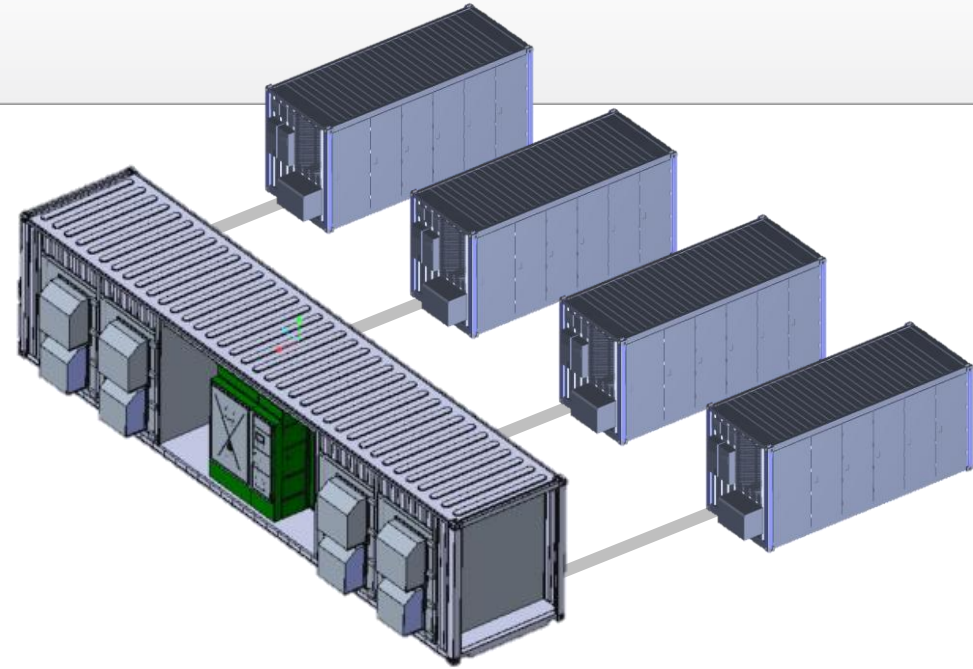
Two 4 MVA blocks in parallel



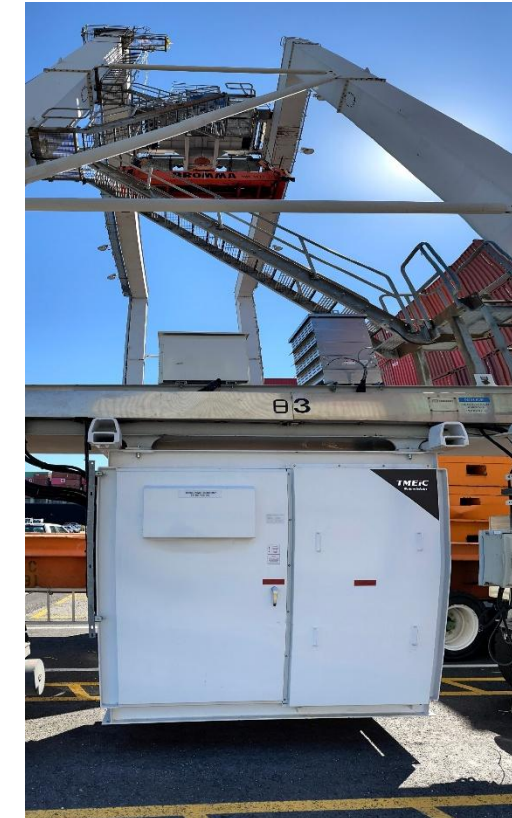
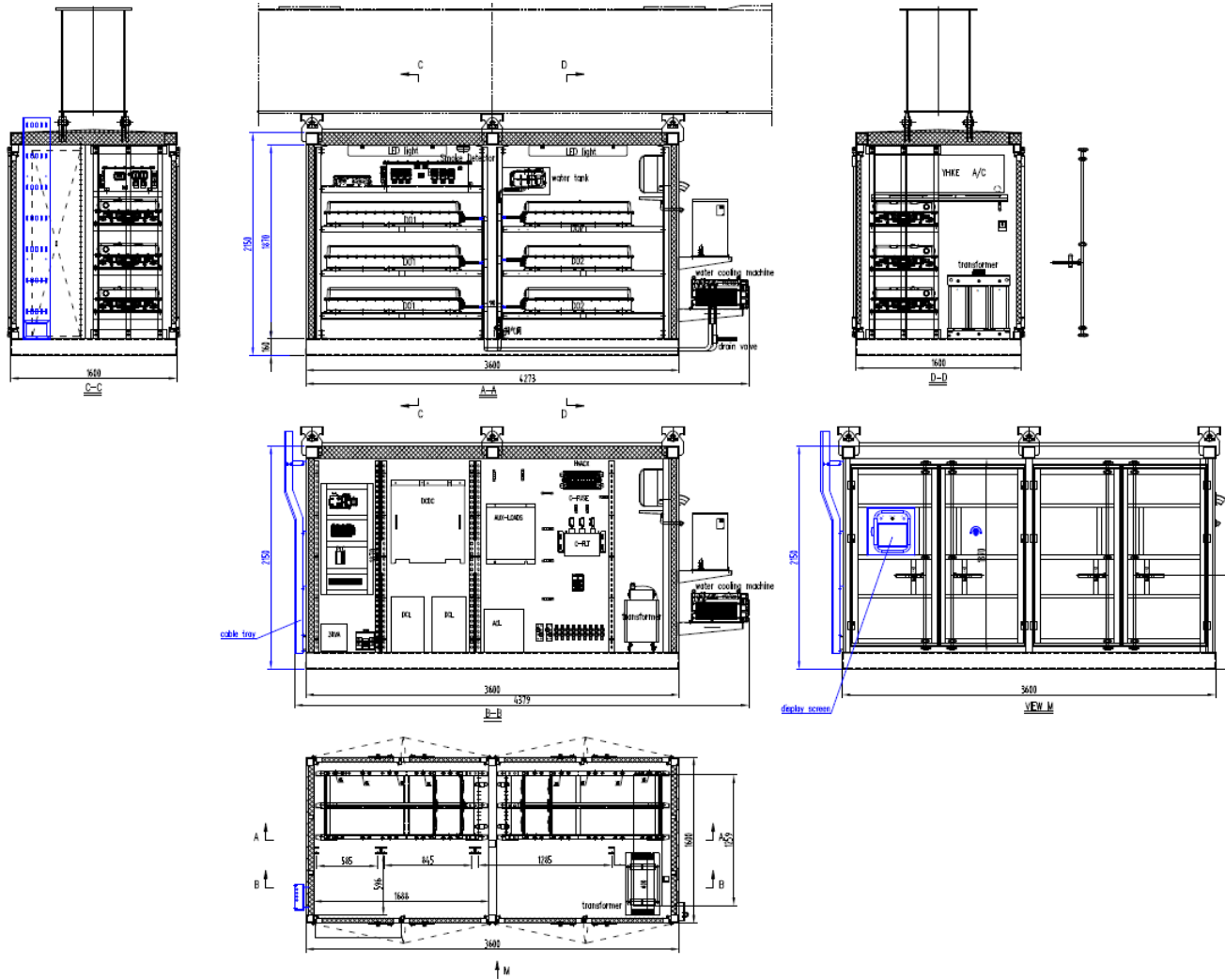
# Energy Storage Solution

## TMEIC Experience

- 2.3GWh ESS installed worldwide
- 30GW inverters connected throughout US grid
- Latest inverter generation delivered in Nov/2023



# Hybrid RTG - Battery + Intermittent DG





# TMEIC MW Charger



## Power Converter

- ▶ AC to DC Converter - Ninja ESS
- ▶ DC to DC Converter - a MW outdoor type DC to DC converter under development

## DC Dispenser

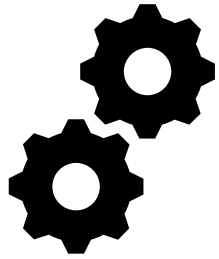
- ▶ Communication
- ▶ Cable Cooling
- ▶ Mechanical Enclosure
- ▶ Protection

## Control Card

- ▶ a control card for the power converter is under development



# Navigating the Green Transition for Ports



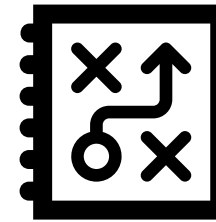
Technical &  
Infrastructure



Financial &  
Economic Factors



Regulatory &  
Compliance



Operational  
Planning



Sustainability &  
Future Proofing

# Navigating the Green Shift with TMEIC by Your Side



End-to-End  
Infrastructure  
Assessment



Modular & Operations  
Friendly Solutions



Performance &  
Partnerships



Co-present solutions to  
Port Authorities &  
Shipping Lines



Training & Capability  
Building

# Thank you