

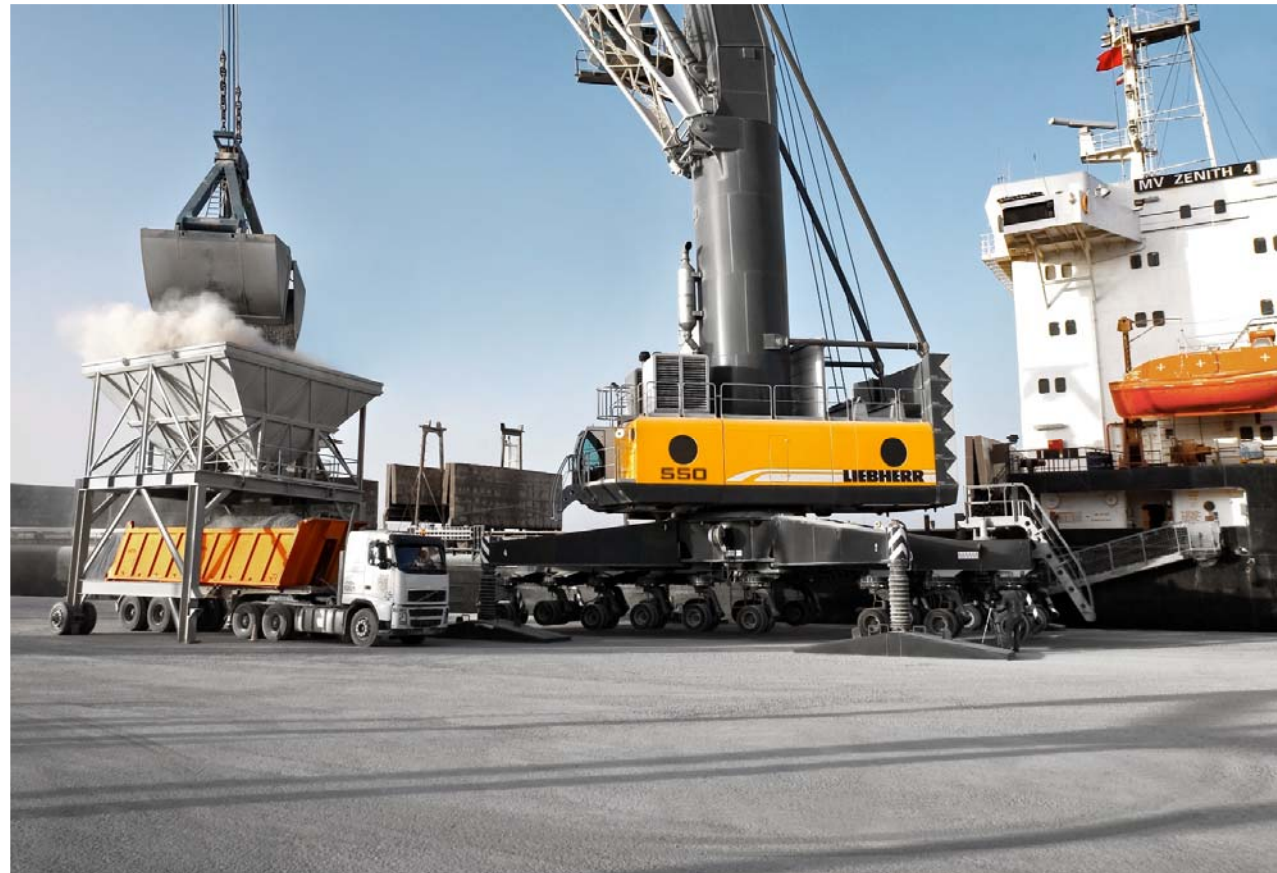
LiDAT[®] smartApp

smart up your performance

LIEBHERR

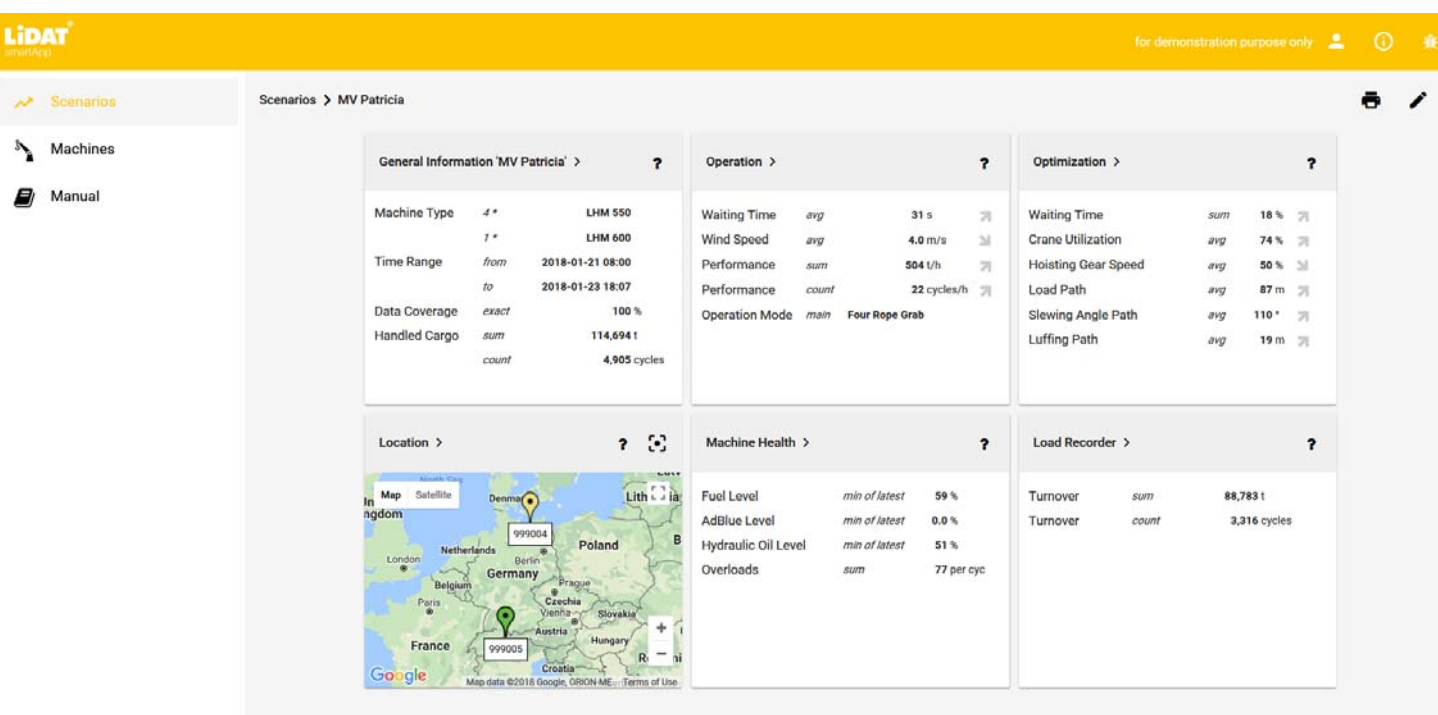
Content

- What it is
- Technical description
- Packages
- Upgrade and Retrofit
- Business Cases
- Demo Version
- Sales Support
- Technical support



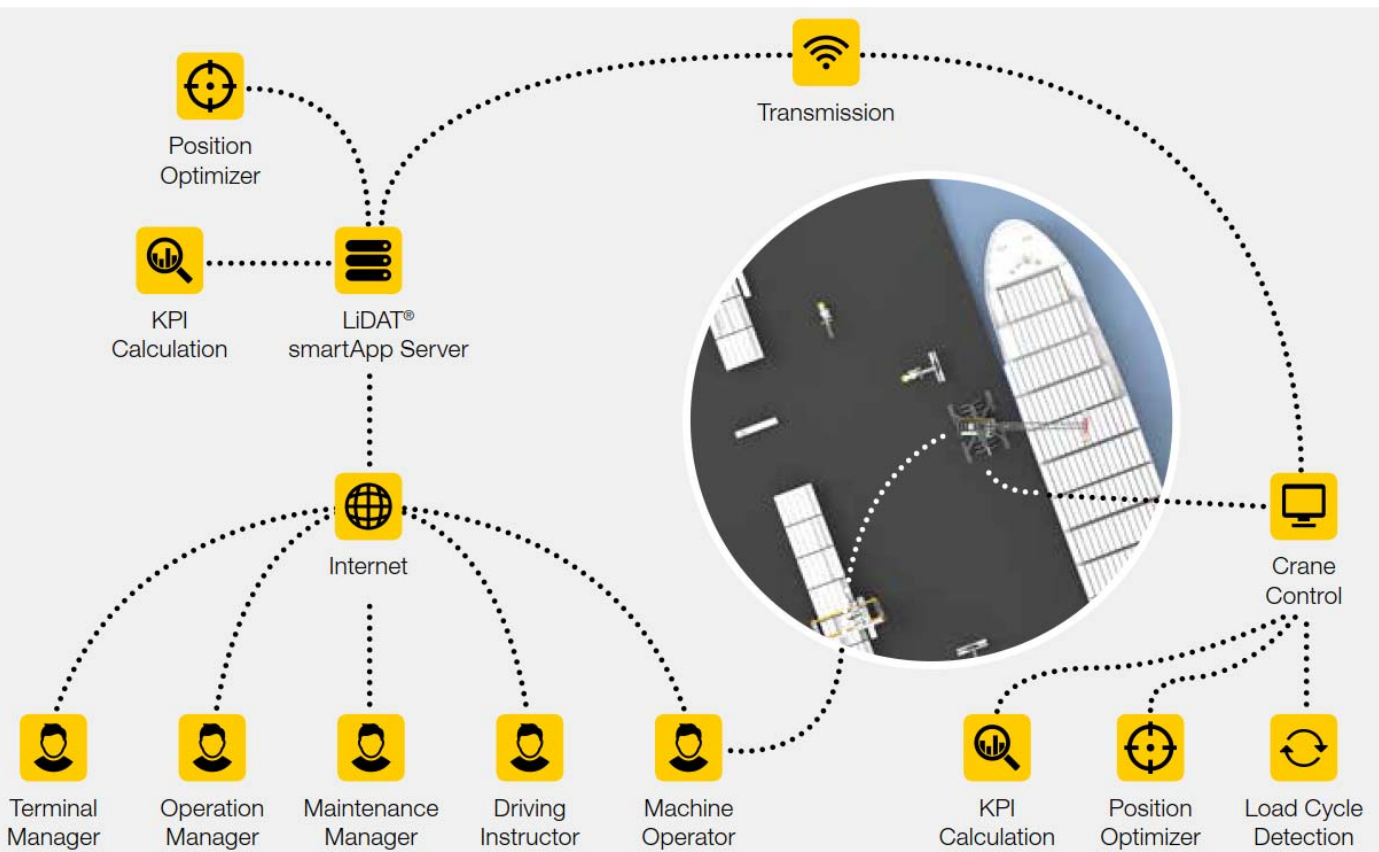
LiDAT® smartApp

What it is



- IT-solution for analysing and optimising cargo handling processes
- Makes the processes faster, more environmentally friendly and more cost effective
- Real-time overview of the equipment status and the progress
- The Optimization Package additionally recommends specific optimisation actions.

Technical description

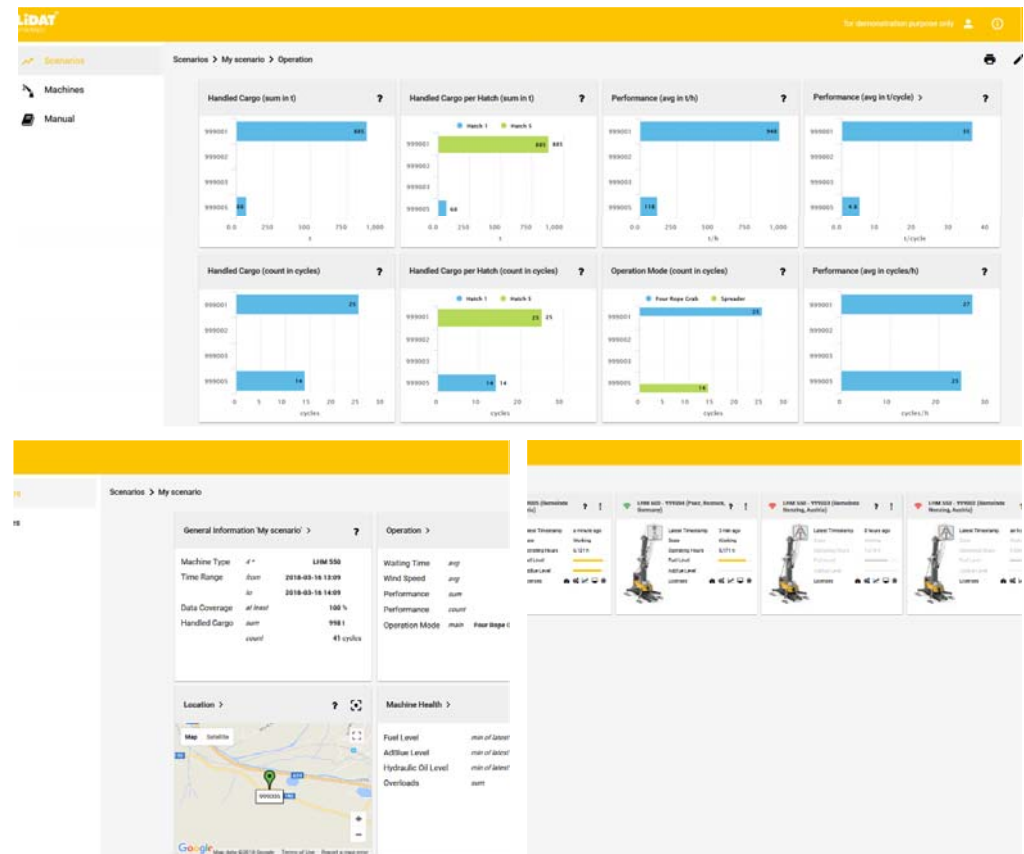


- The relevant data transmitted to the LiDAT® smartApp server
- Authorised users can access and download the processed data via LiDAT® smartApp
- Liebherr handles the setup and support of the transmission link, hosts the data and maintains the software during the active user subscription

LiDAT® smartApp Packages

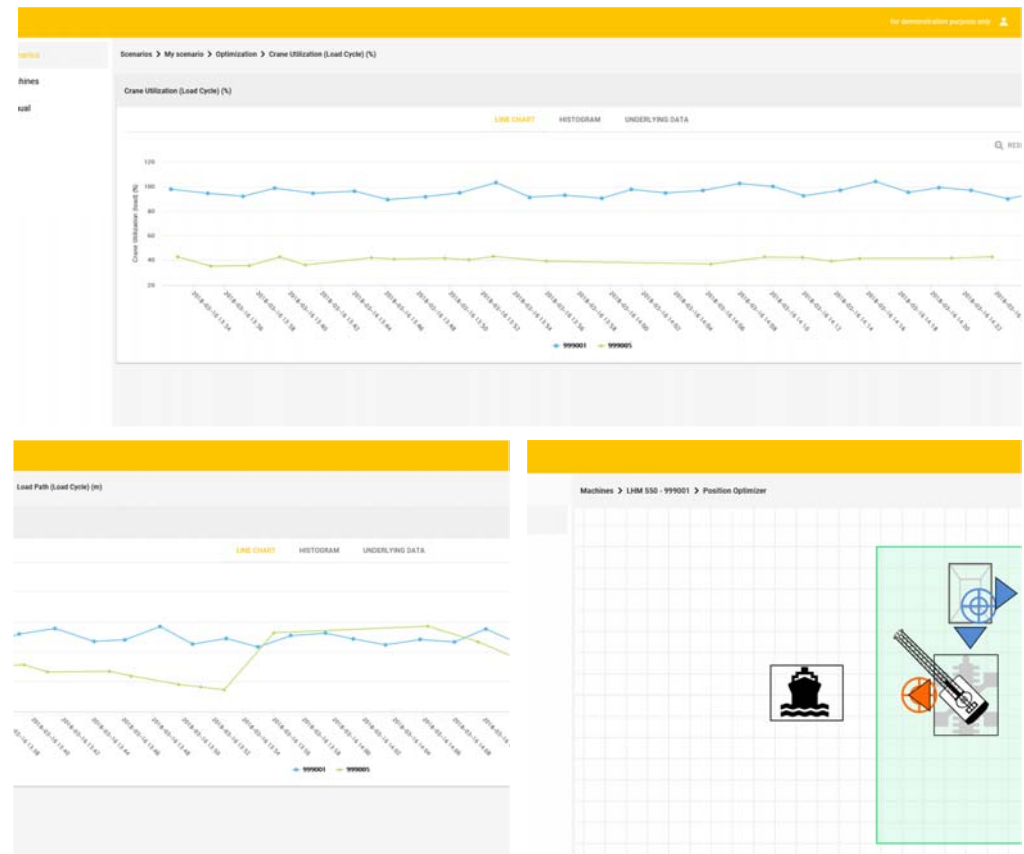
Basic

- Web based IT-solution
- Optimised for mobile devices
- Intuitive use
- Worldwide data recording and transmission in real-time
- Significant reports in PDF-format available as download
- Integrated user manual
- Transparency of processes by figures and charts
- Comparability of cranes and processes across locations



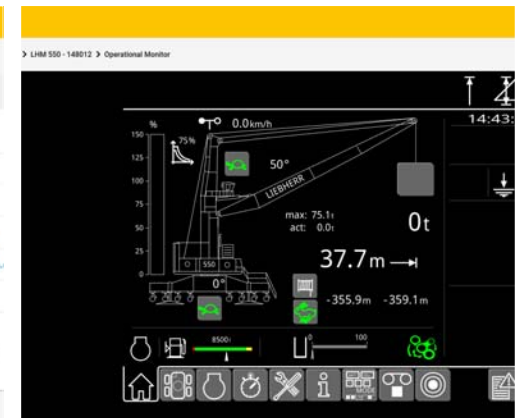
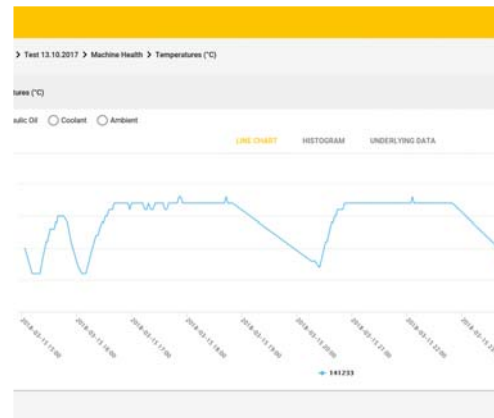
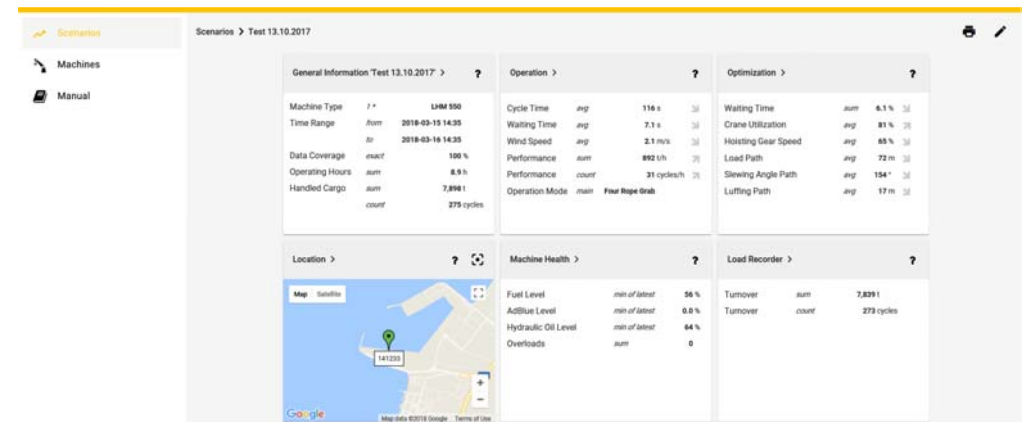
Optimisation

- Turnover and optimisation orientated figure spectrum
- Detailed graphic representation
- Intelligent optimisation algorithm (Position Optimizer) for bulk turnover
- Load Recorder turnover analysis
- Detection of optimisation potential by additional figures and charts
- Position Optimizer
- Automatic load cycle detection
- Performance comparison inside the fleet



Maintenance

- Display of important operating data (e.g. operation hours, fluid levels)
- Crane control display visible via user interface
- Enables Teleservice
- Higher machine availability by improved planning of maintenance and fill-up interventions
- Remote support by Operation Monitoring
- Reduction of service interventions by Teleservice
- Graphic presentation of machine display via mobile devices



Package overview

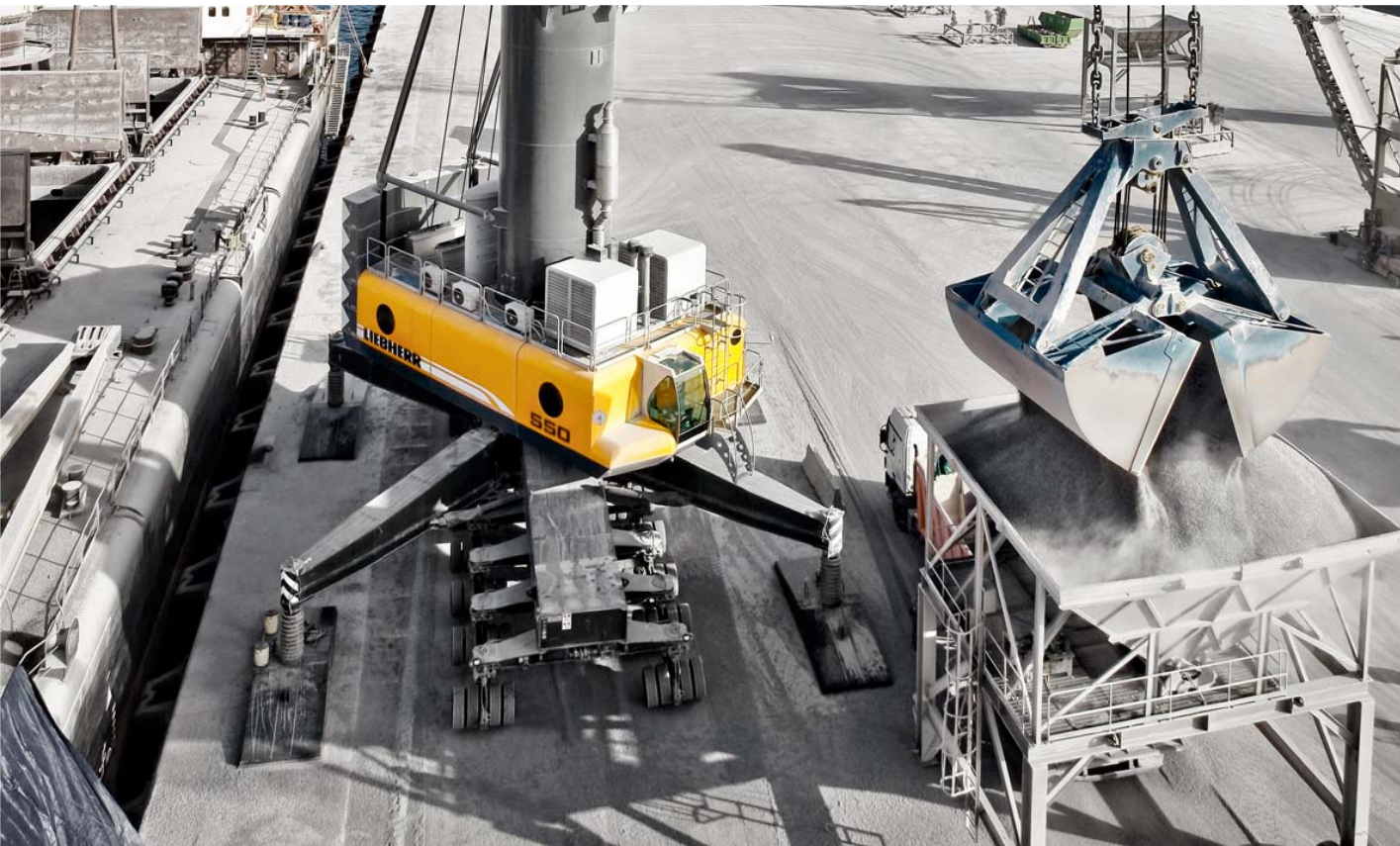
	Basic	Maintenance	Optimisation
Machine Data			
Current Location, Dataset and Environment	◆		
Current Operating Hours and Resources		◆	
Process Data (Scenario)			
General Information (machines, location handled cargo, operation hours, data coverage)	◆		
Machine Health (filling levels, temperatures)		◆	
Operation KPIs (Handled Cargo, Performance, Cycle Time, Wind Speed)	◆		
Operation KPIs (Split of Cycle Time, Handled Cargo per Hatch)			◆
Optimization KPIs (Crane Utilization, Gear Speed, Split of Cycle Times, Load Path, Outreaches, Luffing Path, Slewing Angle Path, Drive Configuration)			◆
Machine Reports			
Dashboard Report (Location, Environment, and Dataset)	◆		
Dashboard Report (Resources and Operating Hours)			
Machine Use	◆		
Machine Logbook	◆		
Safety Report	◆		
Customer Maintenance Planner	◆		

Package overview

	Basic	Maintenance	Optimisation
Process Data Report (Scenario)			
General Information, Operation, Data Coverage, Handled Cargo, Operating Hours, Operation Mode, Performance, Wind Speed, Cycle Time	◆		
Machine Health		◆	
Optimization (Split of Cycle Time, Handled Cargo per Hatch, Crane Utilization, Gear Speed, Load Path, Luffing Path, Slewing Angel Path, Drive Configuration, Outreaches, Turnover per Hatch)			◆
Features			
Operation Monitoring		◆	
Position Optimizer			◆
Load Recorder			◆
Teleservice		◆	

LiDAT® smartApp

Upgrade and Retrofit

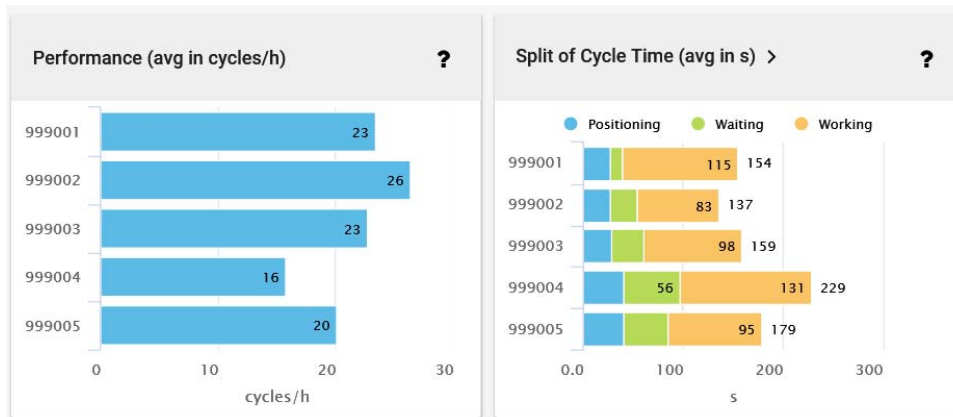


- Upgrades from existing LiDAT® packages available
- Retrofit depending on machine software and crane generation
- For further information please contact your responsible service station or contact:

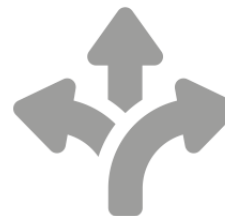
lwn-ts-itm@liebherr.com

LiDAT® smartApp

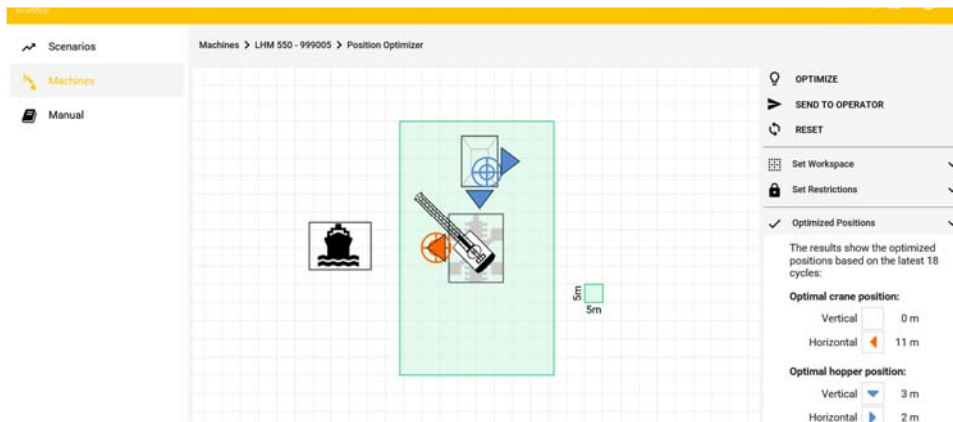
Business Cases



Comparison: Direct comparison of multiple cranes during definable time periods with the feature „Scenario“

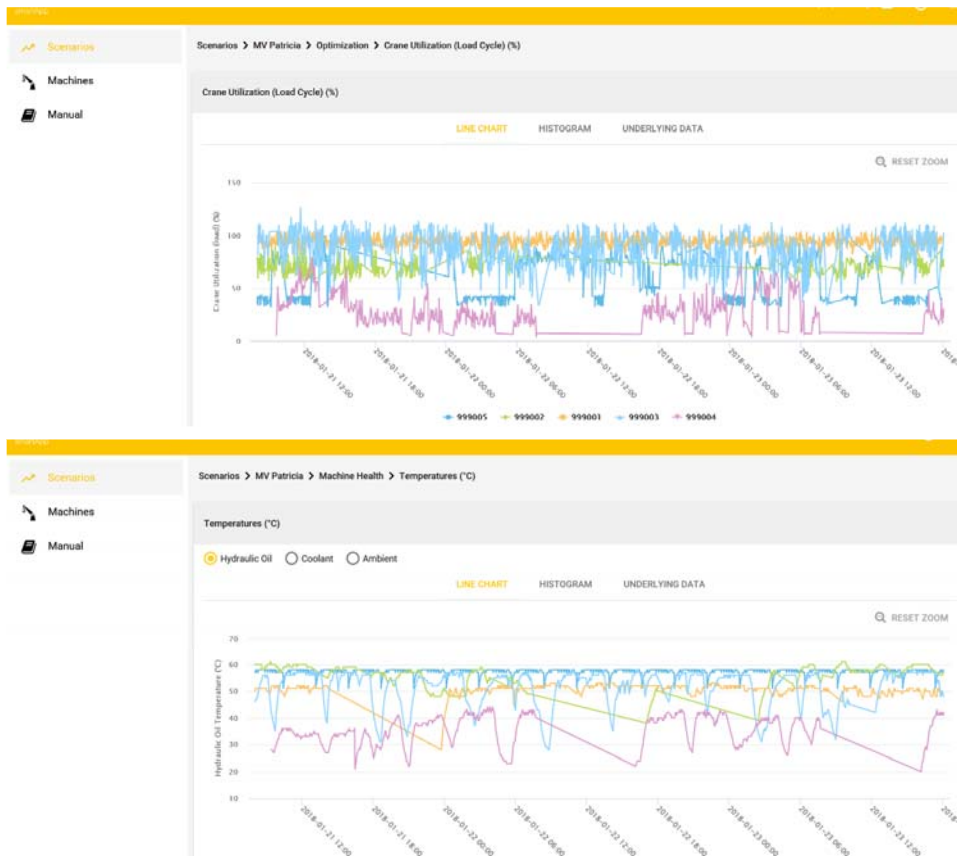


Optimisation: Identification of starting points for optimisation activities with the feature “Position Optimizer”



LiDAT® smartApp

Business Cases



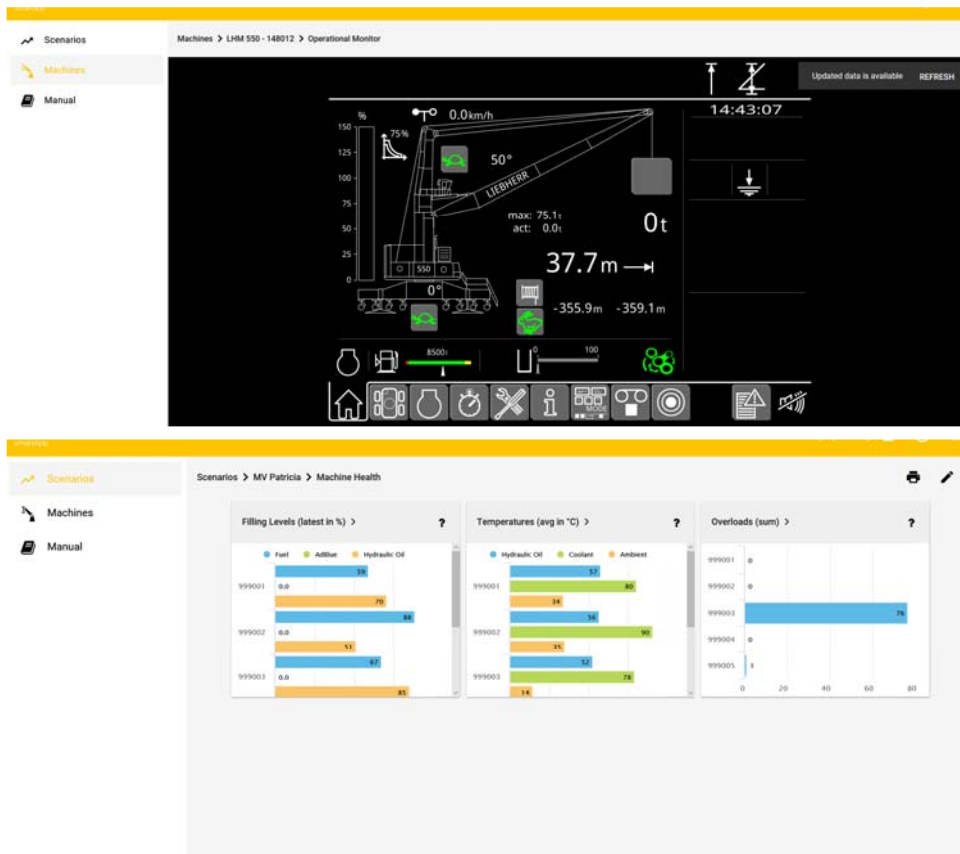
Analysis: Detailed analysis of cargo handling process in real-time.



Tracking: Comprehensive, informative data collection on process and machine statuses

LiDAT® smartApp

Business Cases



Direct access: Information obtained directly from crane control system rather than from external sensors



Web app: Intuitive web application, available for different devices

LiDAT® smartApp

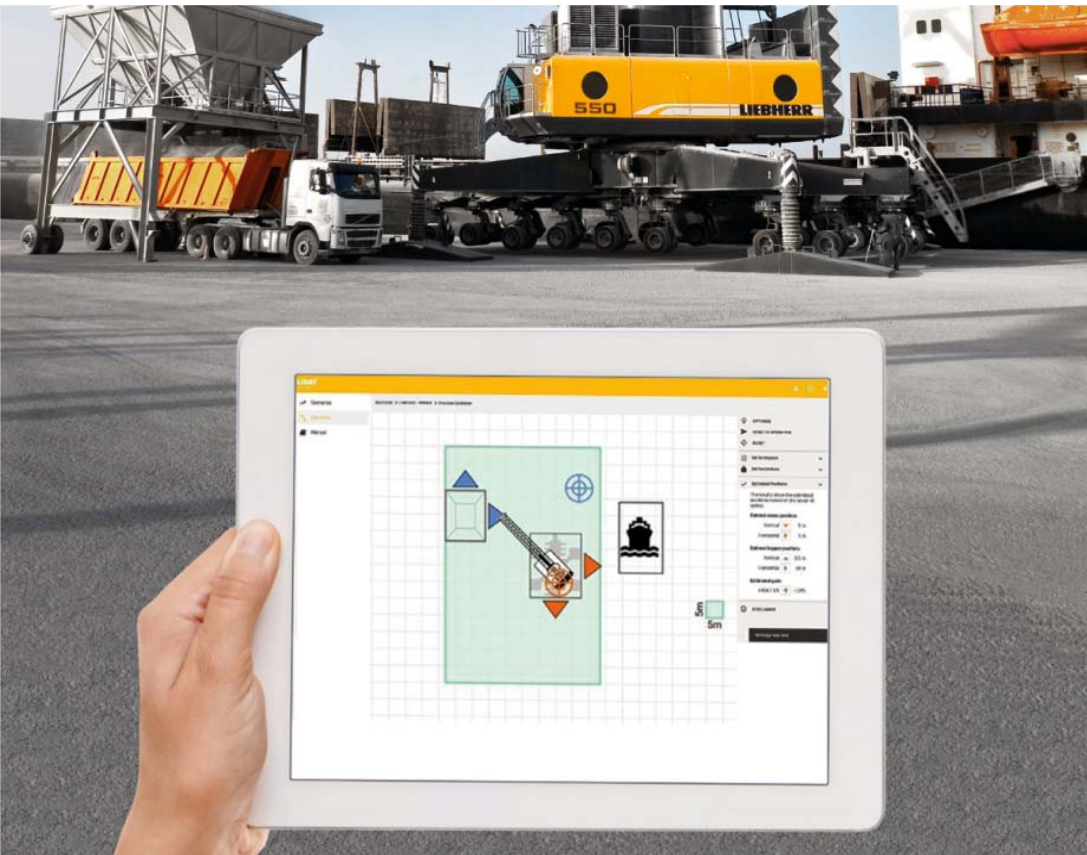
Benefits



- Increased turnover efficiency
- Cost saving
- Eco-friendliness
- Increased resale value
- Good process and machine overview

LiDAT® smartApp

LiDAT® smartApp - Demo version



- Get your user account from:
lwn-ts-itm@liebherr.com
- Login under:
<https://demo01-smartapp.liebherr.com/login>
- Discover the possibilities

LiDAT® smartApp

Sales Support

Contact:

lwn-ts-itm@liebherr.com



Günter Berthold
guenter.berthold@liebherr.com



Markus Bolter
markus.bolter@liebherr.com



Oliver Bitschi
oliver.bitschi@liebherr.com



Andreas Kühne
andreas.kühne@liebherr.com



Adrian Martin
adrian.martin@liebherr.com



Daniel Lange
daniel.lange@liebherr.com



Thank you for your kind interest