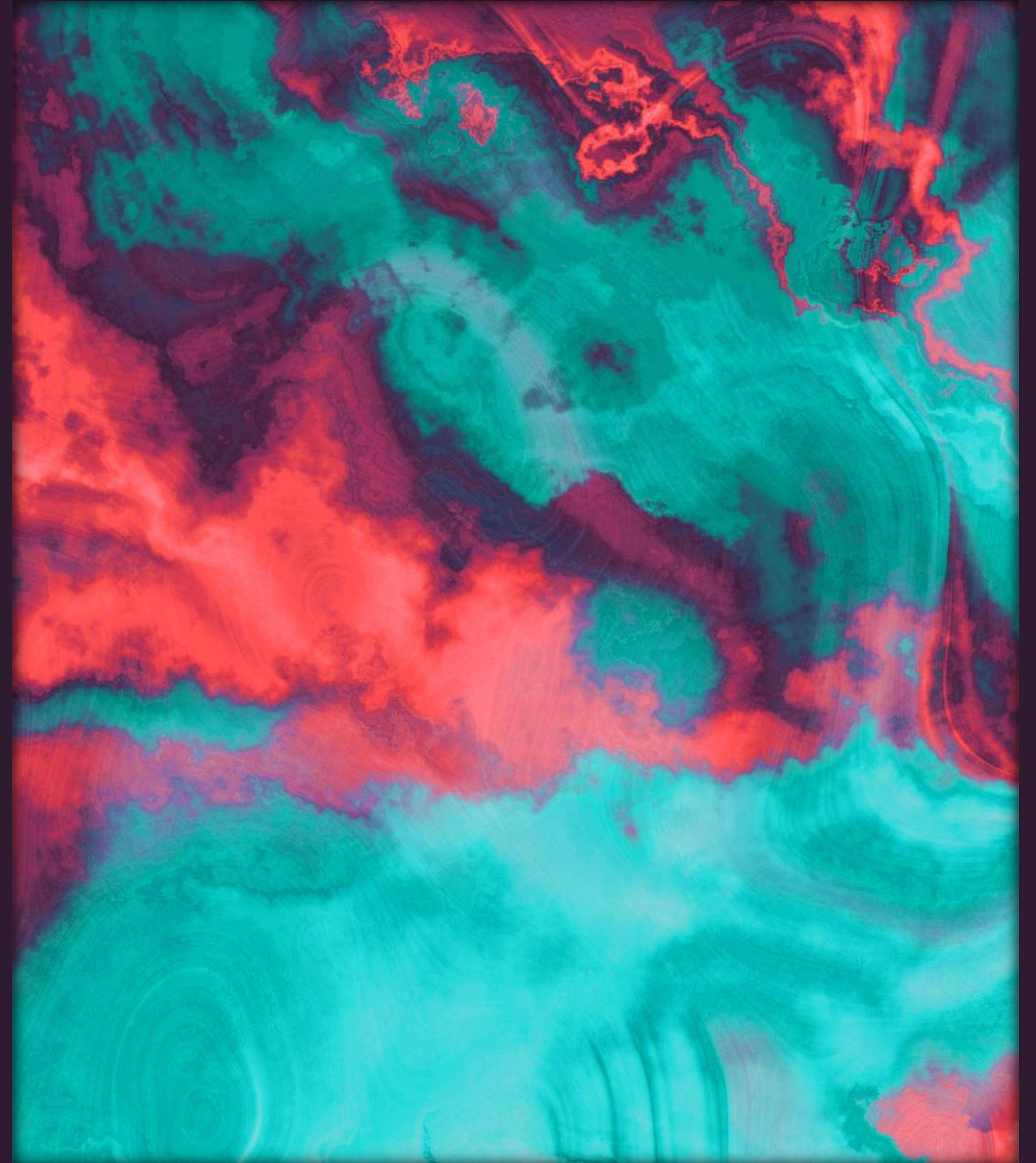


# THROUGHPUT & SUSTAINABILITY



*Warehousing Throughput,  
Operations Management in  
Sustainable Efficiencies*



# INTRODUCTION:



# WHAT IS THROUGHPUT?

*"Do more with less! "*

*"Do as much as possible in the shortest period of  
time?"*

*Main contributors of throughput:*



# THROUGHPUT TIME VS. CYCLE TIME VS. LEAD TIME

Throughput Time

= Closely related, term used interchangeably

Cycle Time

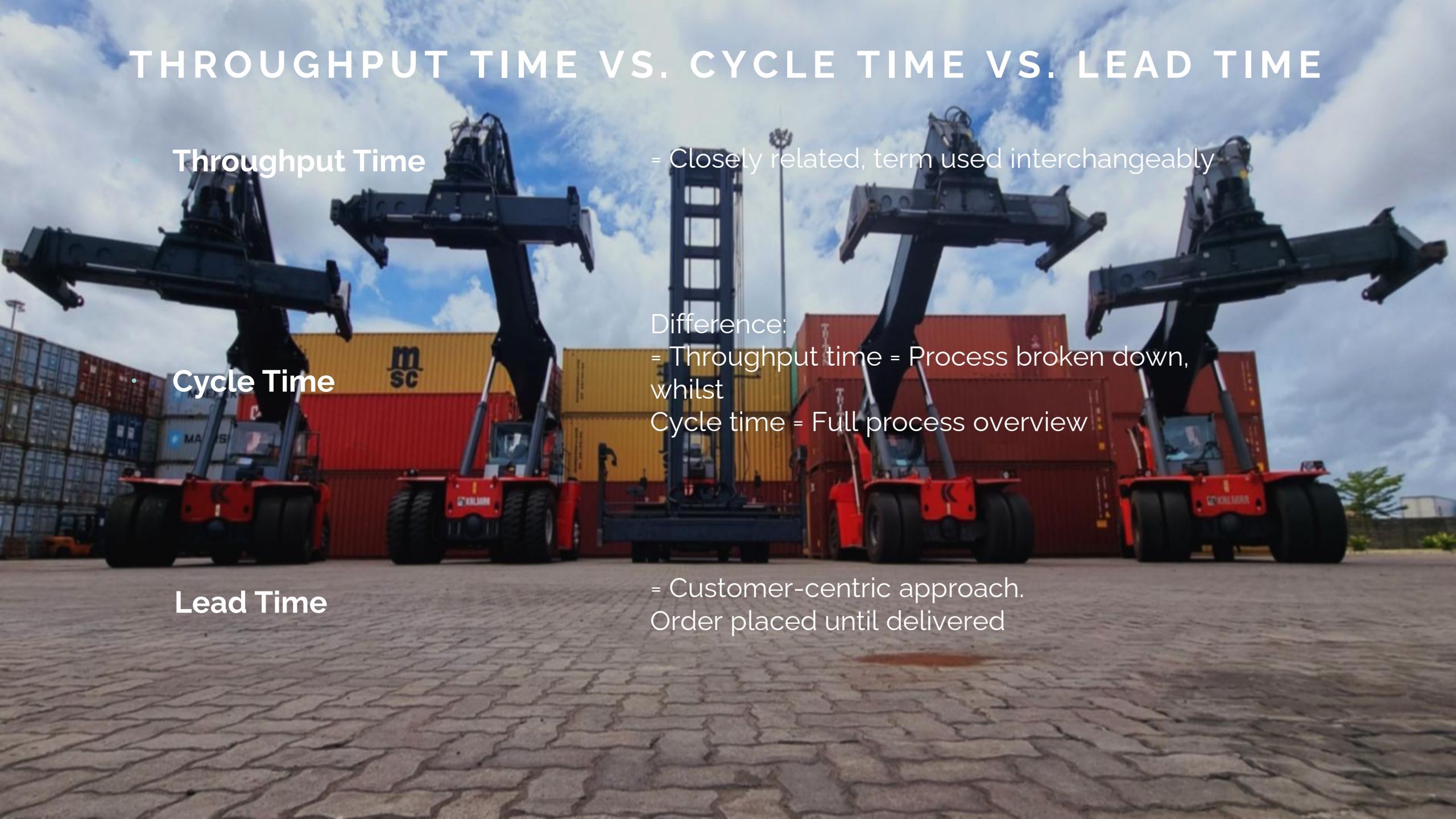
Difference:

= Throughput time = Process broken down, whilst

Cycle time = Full process overview

Lead Time

= Customer-centric approach.  
Order placed until delivered



# THROUGHPUT DEFINED:

- Process time = Time from docs received to goods delivered
- Receiving = Initial stage: Time elapsed for goods receipt
- Storing = Time elapsed of used space.  
What does unutilized space cost my business? What do I prioritize?
- Picking & Packing  
Loading/Offloading = Operational efficiency: Weighbridge-in to Weighbridge-out
- Admin & Dispatch = Admin efficiency: Weighbridge-out to "get on the road, Jack!"

*You cannot improve what you cannot measure!*

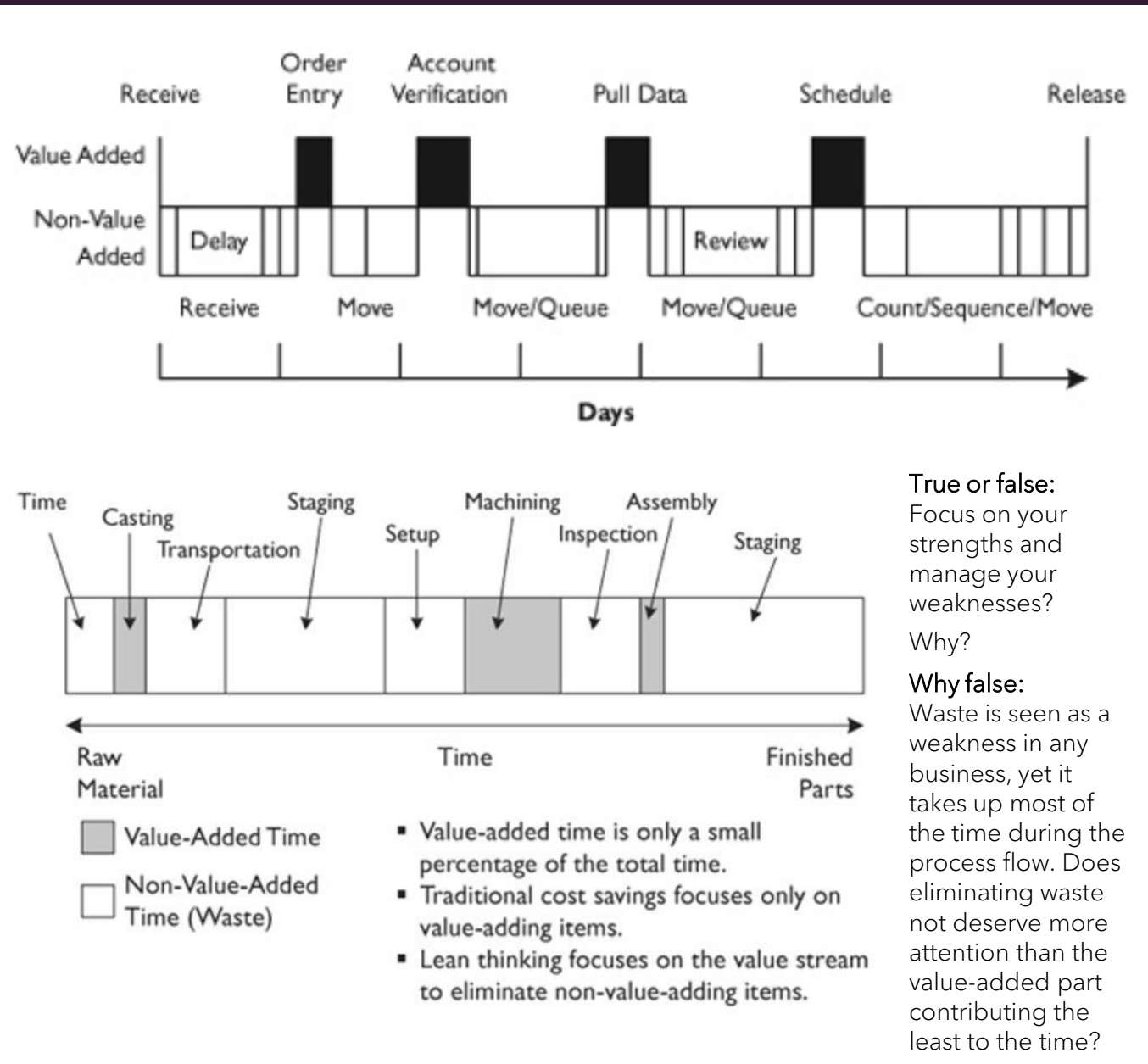
# ELIMINATING WASTE: VALUE ADDED VS. NON-VALUE ADDED:

## TAKEAWAY POINTS:

FOCUS ON WHAT YOU CAN CONTROL

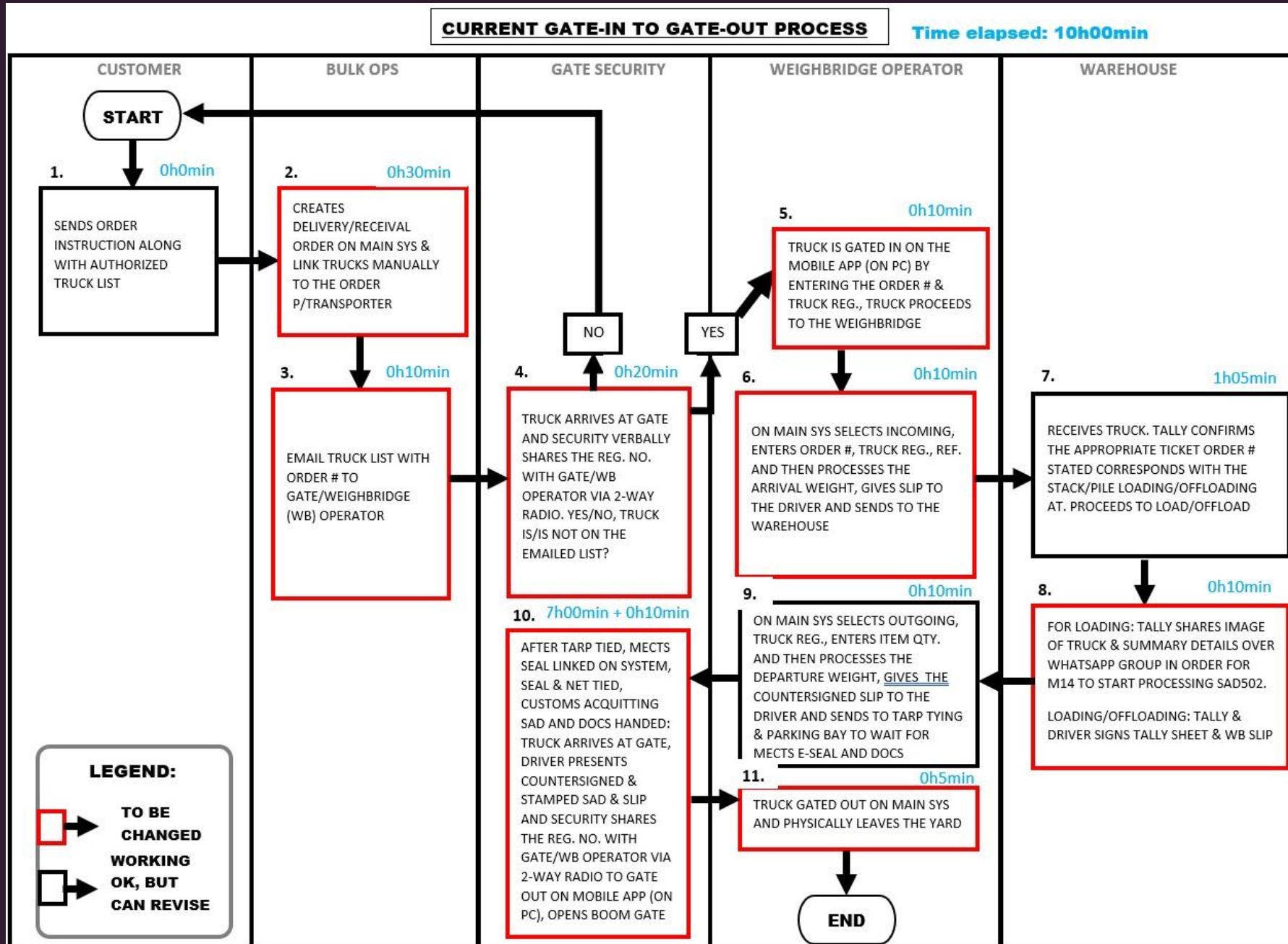
REDUCING THE TIME ELAPSED ON WASTE DURING YOUR PROCESS FLOW, WILL INCREASE THE TIME AVAILABLE FOR VALUE ADDED STEPS  
= HIGHER THROUGHPUT

BREAK DOWN FURTHER ALL CONTRIBUTING THROUGHPUT STEPS TO SEE WHAT IS COSTING YOU VS. BENEFITING YOU  
= FULL OVERVIEW



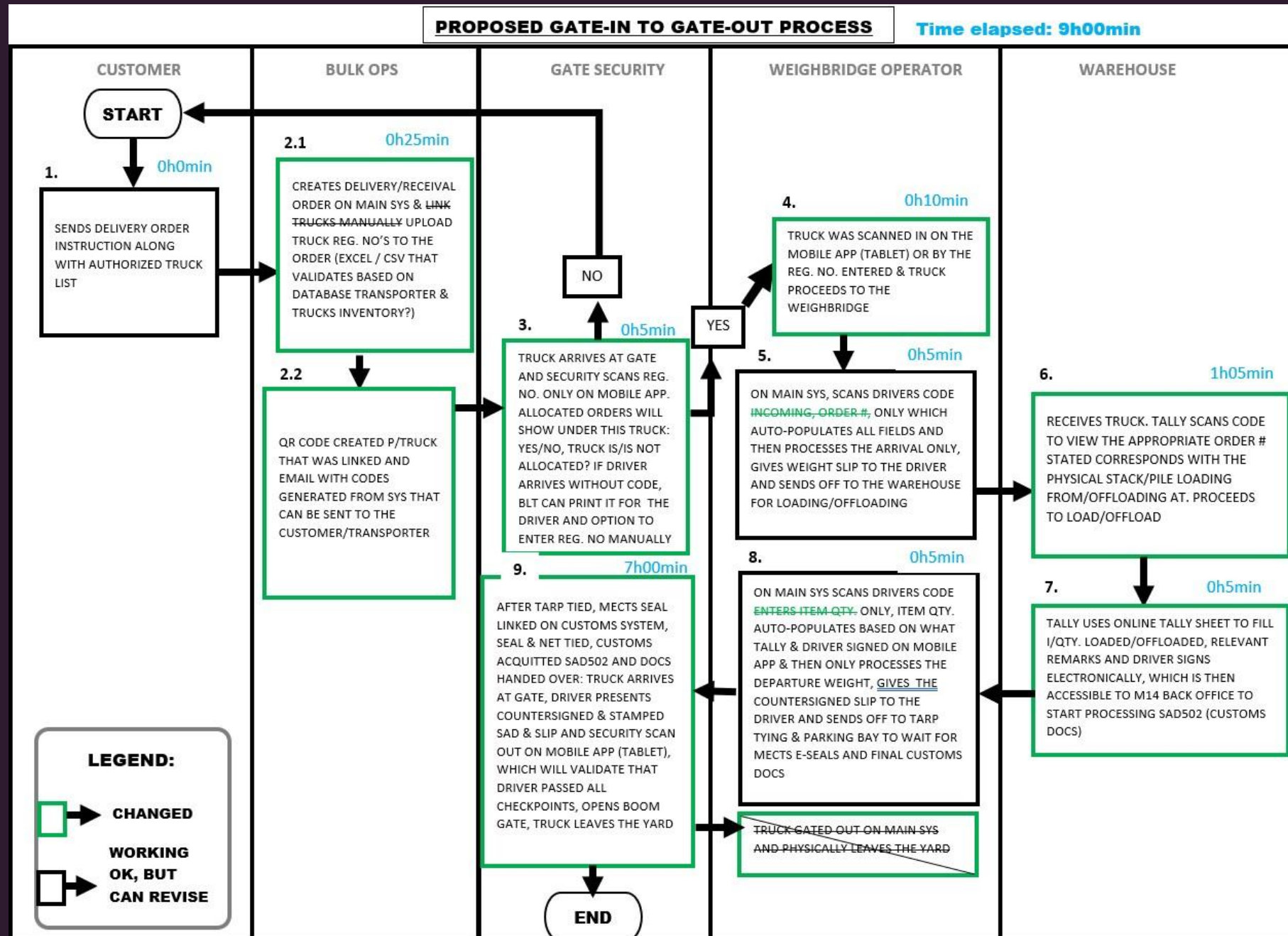
# EXAMPLE OF PROCESS FLOW IN WAREHOUSING:

BEFORE:



# EXAMPLE OF PROCESS FLOW IN WAREHOUSING:

AFTER:



# SUSTAINABILITY BASED ON THE TOYOTA WAY & PHILOSOPHY



## REFERENCE CREDIT:

- <https://www.ptc.com/en/blogs/iiot/what-is-manufacturing-throughput>
- <https://www.logisticsbureau.com/warehouse-throughput/>
- The Toyota Way – Dr. Jeffrey K. Liker
- IBLT&S Internal Processes

OBRIGADO  
THANK YOU!

