

Port of Antwerp-Bruges International

Mozambican ports as drivers for sustainable supply chain & corridor development

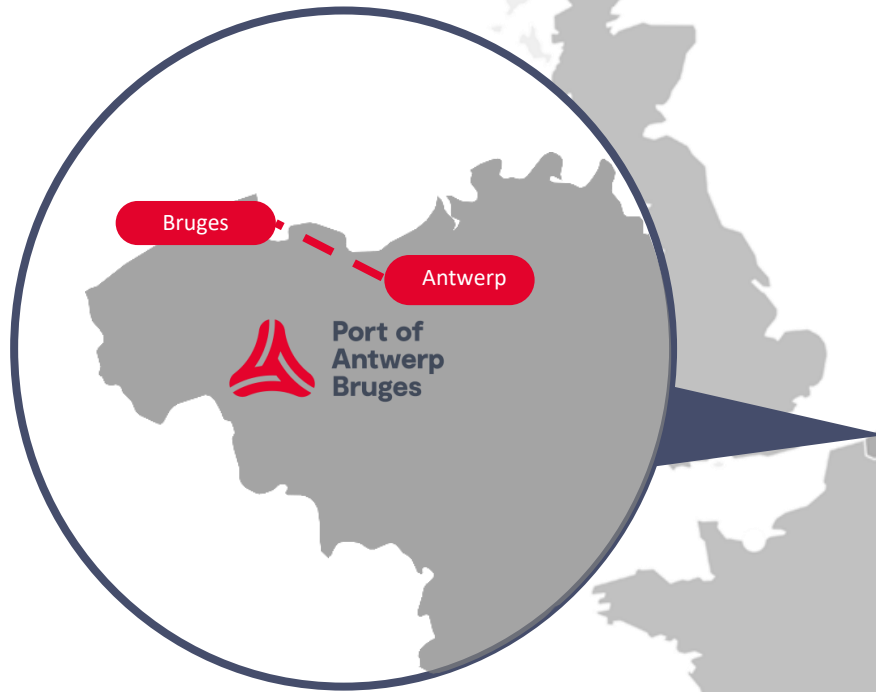
24th of July, 2025
Beira



**Port of
Antwerp
Bruges**
International



intermodal
AFRICA 2025 



A global port
in the heart of Europe

One port
Two sites



Port of Antwerp-Bruges

Main gateway to Europe



Largest **car handling** port in Europe
> 3,000,000 cars/year



Largest **petrochemical cluster** in Europe



Frontrunner in the **energy transition**



Driver of **Economic growth** (4.5% GDP contribution)



Total annual throughput of +- 300 million tonnes



Port of
Antwerp
Bruges
International



IN THIS PICTURE

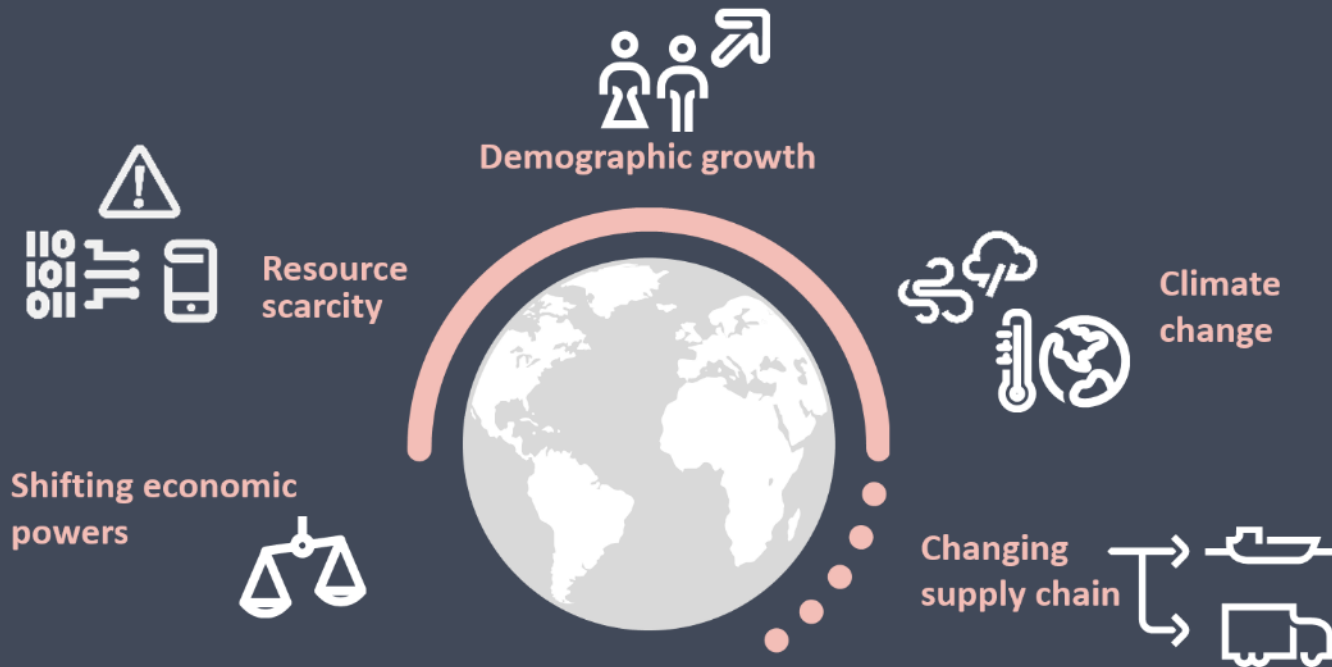
MPET, the largest container terminal in Europe, is located in Antwerp and has a capacity of 9 million TEUs, along with 3,700 meters of quay space.

Port of Antwerp-Bruges

A global port in the heart of Europe



Disruptive global drivers



Trends

Sustainability



Transition



Technology



Collaboration



Port of Antwerp-Bruges

A global port in the heart of Europe



Belgian Port Authority

Port authority managing the Port of Antwerp-Bruges, the main gateway to Europe



Global Port Developer

Advisory and investment division of Port of Antwerp-Bruges, focusing on global port development



Global Port Training Centre

APEC is a global port training centre, transferring port knowledge and expertise since 1977



Major Port in the Heart of Europe

Port of Antwerp-Bruges, the **second-largest petrochemical cluster in the world**, achieved a **total cargo throughput of 278 million tonnes** in 2024 and handled **13.5 million TEUs**.

Port of Antwerp-Bruges International



Reconciling people, planet and profit

Sustainable
growth



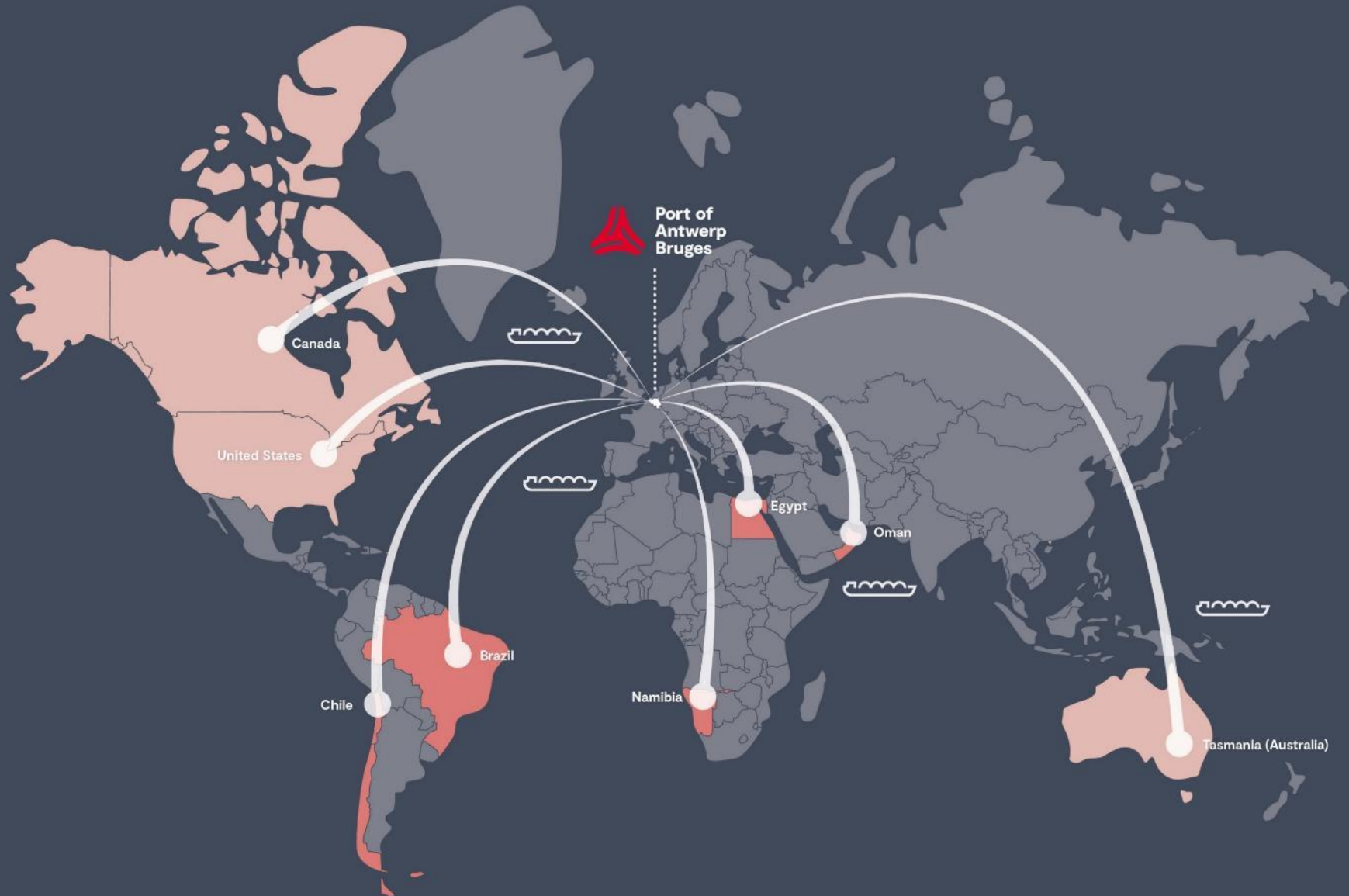
Frontrunner in the
energy transition



Strong position in the
global supply chain



Port of Antwerp-Bruges as lever for a global hydrogen supply chain



Embracing your role in shaping the port platform





“We must dare to pioneer”

Jacques Vandermeiren,

CEO Port of Antwerp-Bruges

The potential of the Mozambican ports

Sustainable supply chains and corridors

1. Mozambican ports as **regional gateways**
2. Mozambican ports embracing **digitization** and **multimodality** (rail, road, cabotage)
3. Mozambican ports adopting the **supply chain approach**.
4. Mozambican ports as hubs for **VAL** and **industrialization**.
5. Mozambican ports as drivers for the **energy transition**.



=> Mozambican ports as a **catalysts for growth** through creation of sustainable supply chains and corridors.

Port of Antwerp-Bruges International

Joint Venture Shareholders' Agreement

between
Port of Antwerp-Bruges International (PoABI)
&
Perak State Development Corporation (PSKPNP)



**Port of
Antwerp**
International

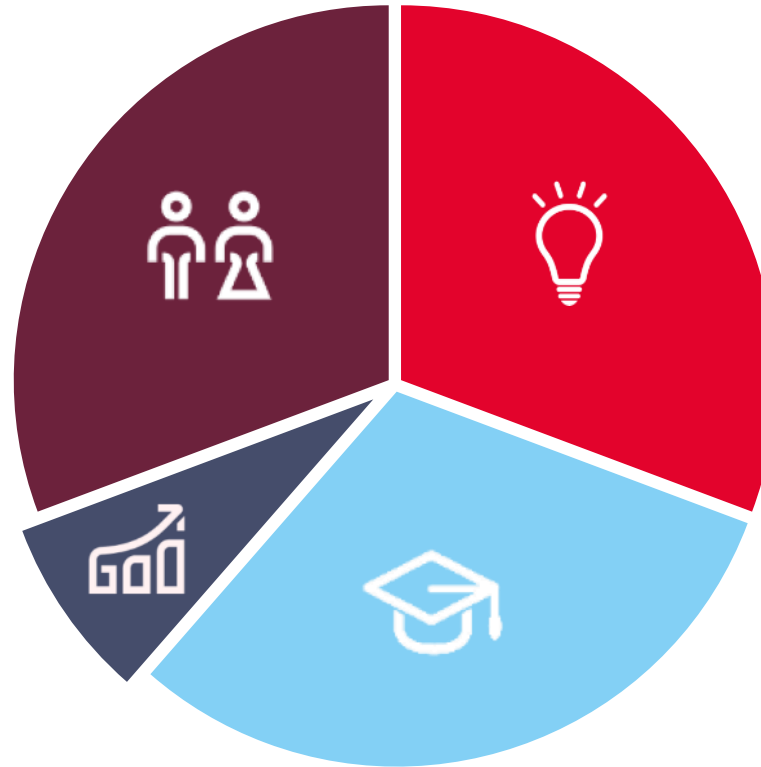


Partnership for the Win

Together towards sustainable port development

● **Port management**
Structural on-site support

● **Investment**
Strategic partnership



Advisory ●
Analysis & Implementation

Training programmes ●
Open enrolment & Tailor-made

Solutions

Working across the entire supply chain



1 Port Strategy
& Governance

2 Digital Business
Analysis

3 SHEQ and
Sustainability

4 Operations
& Blue collar training

5 White Collar
Training (APEC)

APEC Antwerp/Flanders Port Training Center



- **Yearly standard seminars**
- **Tailor made seminars**
- **Lecturing abroad**
- **Study visits**



**Port of
Antwerp
Bruges**
International





1977

More than 45 years
of experience

+150

Countries

+21.000

Alumni

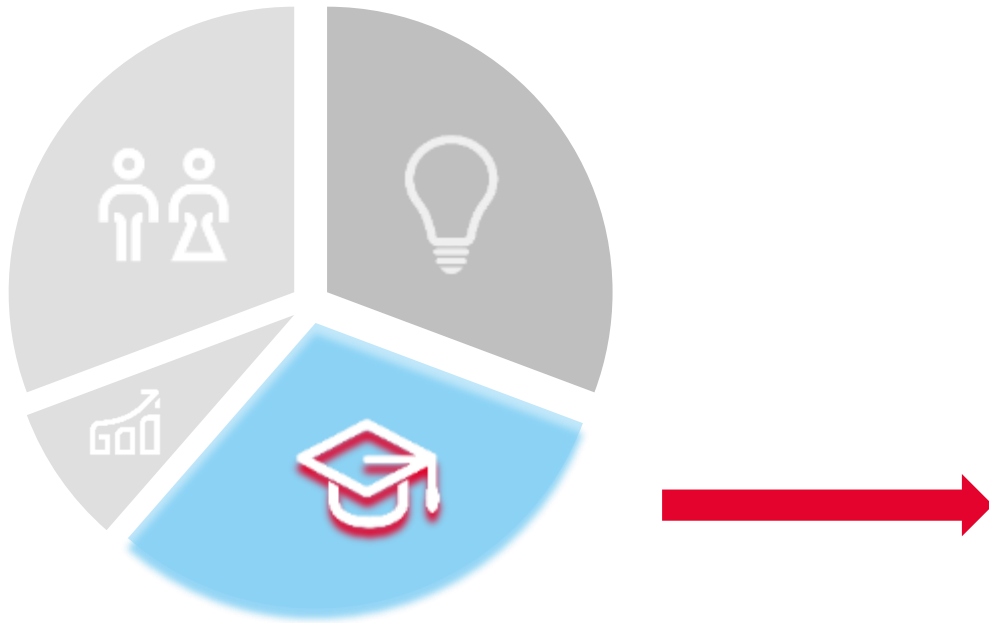


Local training institutes in China & India
And more coming in Africa, Latam, etc.

APEC programme offering

2025 Open-enrollment programme

- Port management & strategic masterplanning
- International Port Strategy
- Dredging technologies
- Supply Chain Management & Hinterland Connectivity
- Port Logistics
- Business Development
- Health, Safety, Security
- Container Terminal Management
- **Trending:**
 - Smart Port Technologies*
 - Energy Transition – A port's perspective*



Training solutions

Open programmes
&
Tailor-made solutions

Full information on apecporttraining.com

APEC

A SMART PORT CONNECTING SMART PEOPLE



Annual Port Courses

A range of different port courses on open enrollment



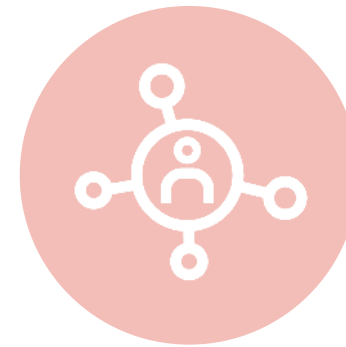
Tailor made courses

Tailored programmes, Crafted to meet your talent developing



Training Assessment

Defining talent developing challenges, Delivering Tailored Solutions



Training Tools

Empowering learning with innovative training tools

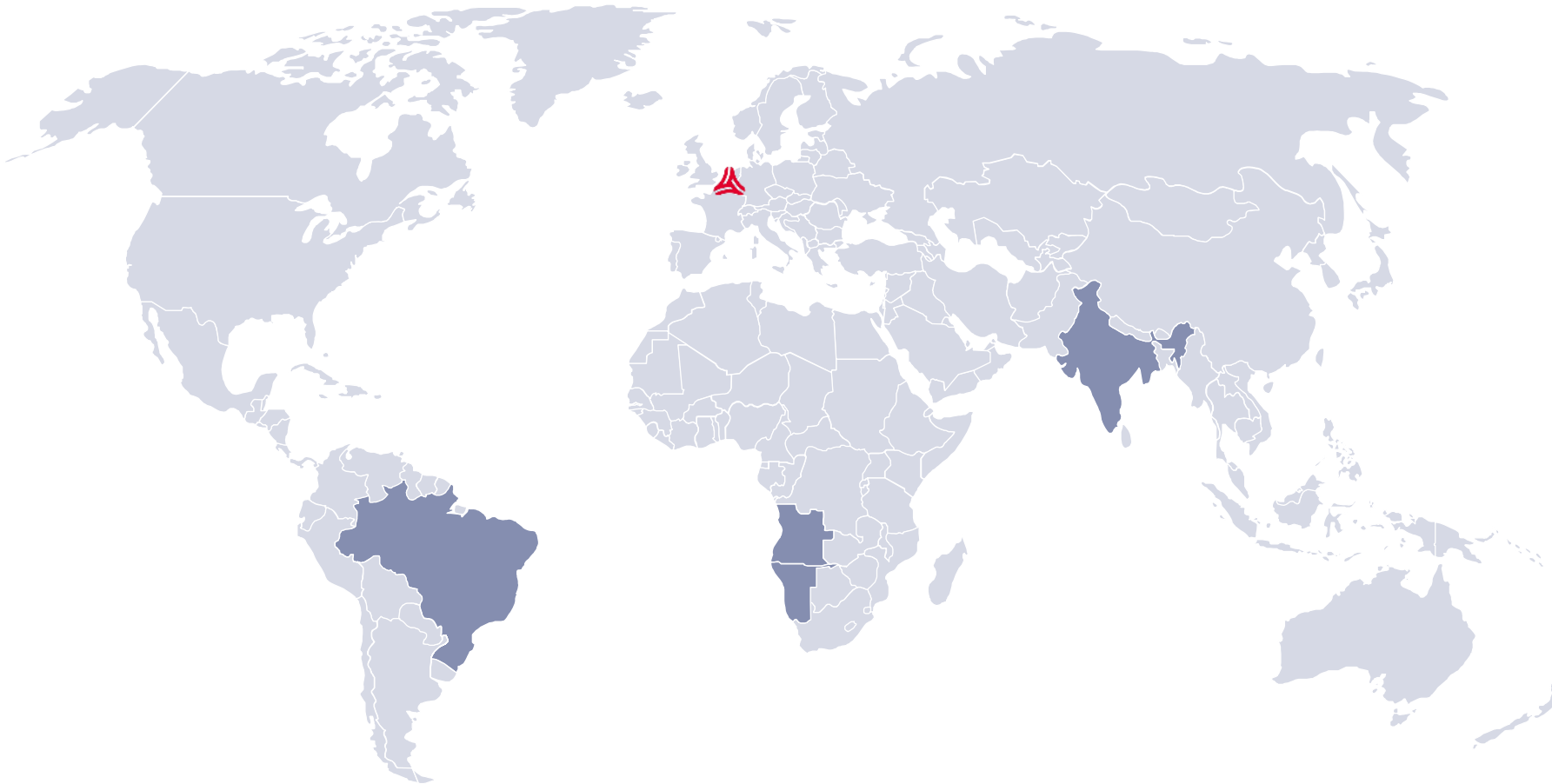


APEC Connect

Stay connected, Grow together

Global Port Network

Delivering value through know-how, network and brand



What we offer

- Know-how
- Network
- Brand

How we contribute

- Enable and derisk infrastructure projects
- Mitigate political risk
- Improve technical reliability
- Strengthen credibility with both investors and customers

Projects & partnerships



Oman - Port of Duqm



50/50 JV: Belgian consortium | Oman National logistics company



Develop | Manage | Train | Operate | Promote



Port of Duqm as **logistics hub** for the largest Special Economic Zone of Oman and gateway to Saudi market



SEZ focusing on **industrial diversification** with **green energy** potential: confirmed investments of H2 and green steel, with potential for larger cluster development



Close to new mineral-rich areas, O&G concessions



World class port infrastructure with deep draft of -18m



ميناء الدقم
PORT OF DUQM



Port of
Antwerp
Bruges
International



Brasil - Port of Açu



POABI as a **minority shareholder**, with management, consultancy and training programmes



2nd largest port in Brazil - First 100% private port complex in Brazil



Large industrial land available at a strategic location serving a region representing 54% of Brazilian GDP



ESG frontrunner with Ecoports certificate and winner of World Ports Sustainability Award



Energy hub with focus on green: 14 projects totalling 33GW of **offshore wind** being licensed and ongoing partnerships for **Hydrogen** development from 10-100MW with R&D scope



Malaysia – LuMIC



Strategically located at the Melacca Street



Shareholder with Perak state (PKNP) in LuMIC Development
Maritime and Industrial City in LUMUT




Management and Port development



Supported by the **EU Global Gateway** Initiative




Benin - Port of Cotonou



Port management: POABI responsible for the management of the only seaport of Benin through a management agreement with the Government



Belgian bilateral programme: strong focus on capacity building, green port & decent work



Team Europe: Focus on capacity building, green port, good governance and hinterland connectivity



Tanzania- TPA Strategic partnership

Capacity building programme to co-create TPA's long term strategy



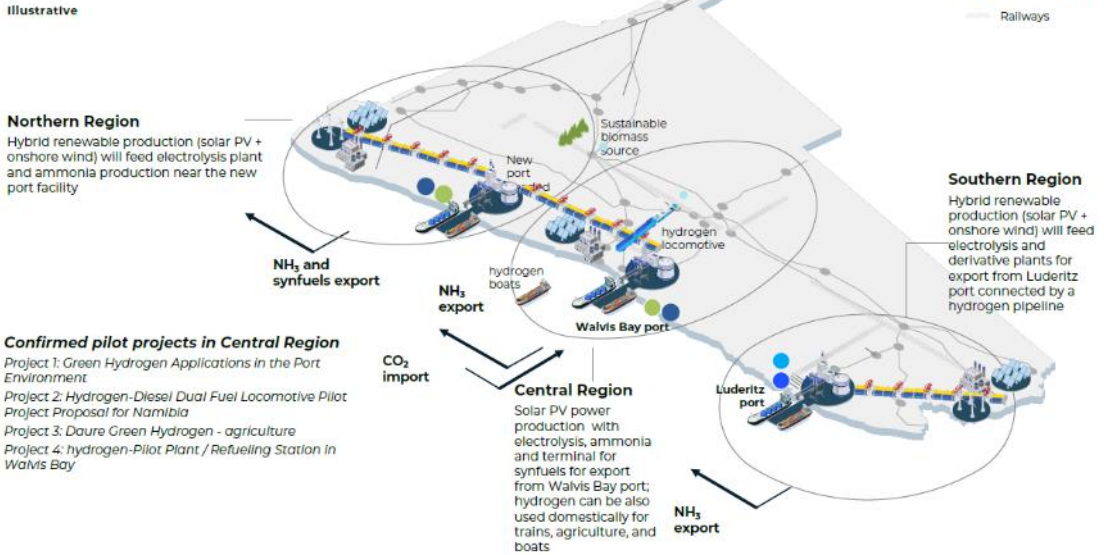
Namibia – Walvis bay

Green molecule hub



Walvis Bay as a hub for green energy in the Central Region

Vision for Namibia's three green valleys



Green Ammonia Production in Namibia



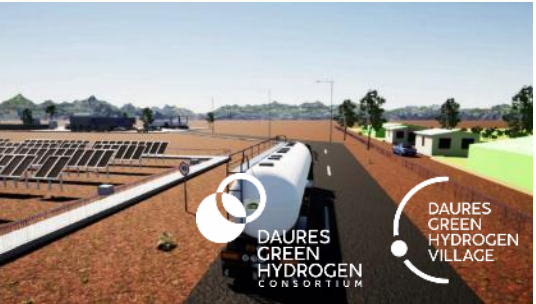
PARTNERSHIP NAMPORT | POABI

- Co-development of Walvis Bay

GLOBAL GATEWAY

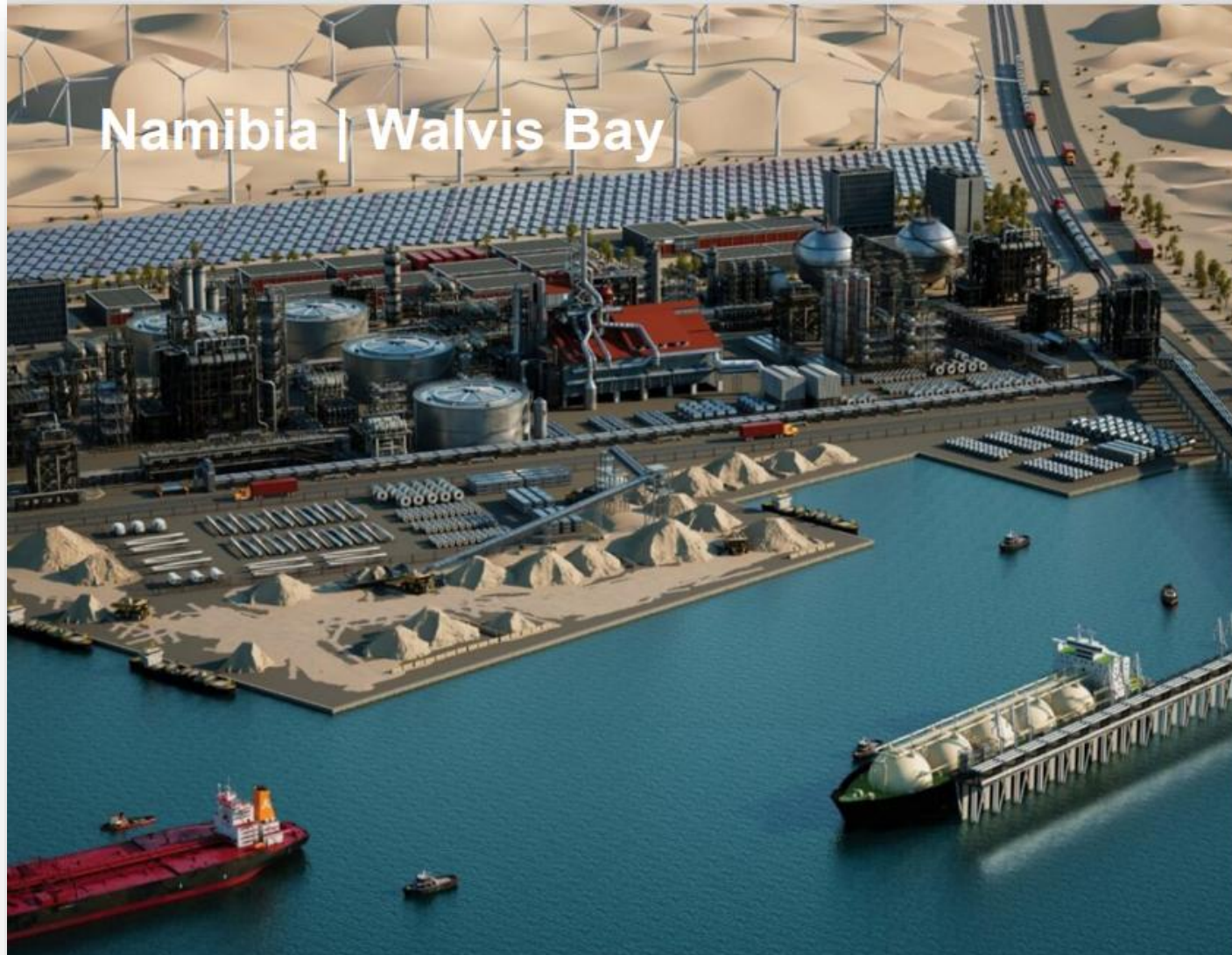
- High level development framework
- Green hydrogen roadmap

zhero



Namibia – Walvis bay

Green molecule hub



Walvis Bay,
the gateway for Namibia's
green industrialisation

Mozambique as a global gateway



**Port of
Antwerp
Bruges**
International



12 Global Gateway priority corridors

1. Abidjan-Lagos

West Africa: Côte d'Ivoire, Ghana, Togo, Benin, Nigeria

2. Abidjan-Ouagadougou

West Africa: Côte d'Ivoire, Burkina Faso

3. Dakar-Abidjan

West Africa: Senegal, Gambia, Guinea-Bissau, Guinea, Sierra Leone, Liberia, Côte d'Ivoire, Cabo Verde

4. Cotonou-Niamey

West Africa: Benin, Niger

5. Libreville-Kribi-Douala-N'Djamena

Central Africa: Gabon, Equatorial Guinea, Cameroon, Chad, São Tomé and Príncipe

6. Douala-Kribi-Kampala

Central Africa: Cameroon, Central African Republic, Democratic Republic of the Congo, Uganda

7. Dar es Salaam-Nairobi-Addis Ababa-Berbera-Djibouti

East Africa: Tanzania, Kenya, Ethiopia, Somalia, Djibouti

8. Mombasa-Kisangani

East Africa: Kenya, Uganda, Rwanda, Democratic Republic of the Congo

9. Maputo-Gaborone-Walvis Bay

Southern Africa: Mozambique, South Africa, Eswatini, Botswana, Namibia

10. Durban-Lusaka-Lubumbashi

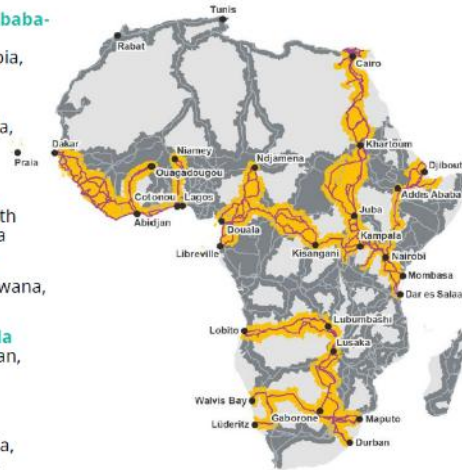
Southern Africa: South Africa, Botswana, Zimbabwe, Zambia

11. Cairo-Khartoum-Juba-Kampala

North and East Africa: Egypt, Sudan, South Sudan, Uganda

12. Lobito-Kolwezi-Lubumbashi/Solwezi-Ndola

Southern and Central Africa: Angola, Democratic Republic of the Congo, Zambia



THE GLOBAL GATEWAY

Connecting goods, people and services around the world in a sustainable way

€ 300 billion

in investments (2021- 2027)

Through a Team Europe approach



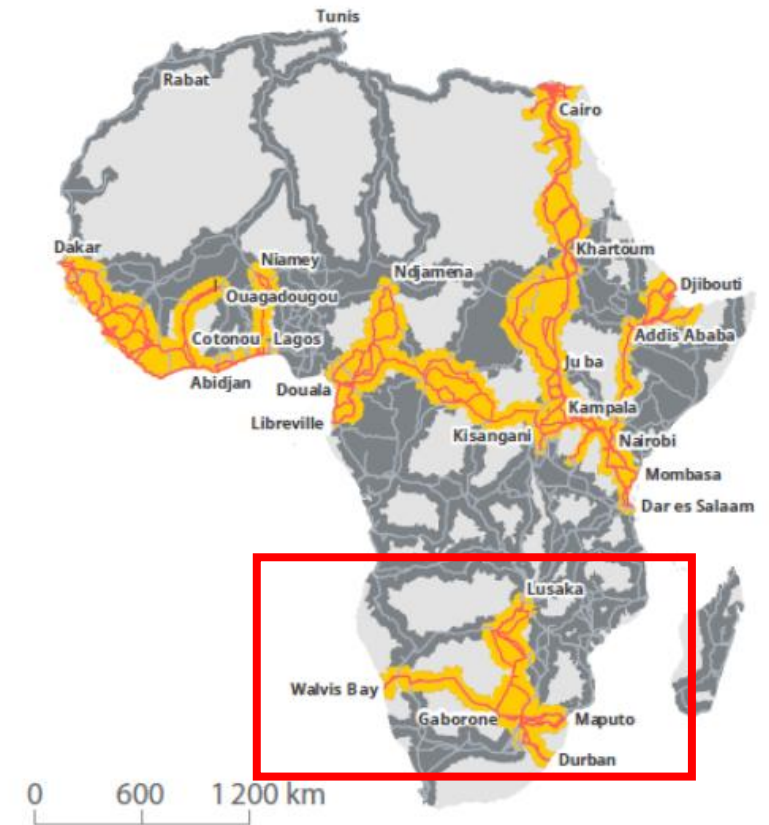
Global Gateway is Europe's offer to build more resilient connections with the world through investments and partnerships



Mozambique as a global gateway

Ports as drivers of sustainable supply chain and corridor development

- ❖ Development of the Mozambican Corridors
- ❖ Value chains benefitting both Mozambique & Europe
 - ❖ Sustainable and LT collaboration creating prosperity
 - ❖ Locally value added logistics & Industrialization
- ❖ Boosting hinterland connectivity
 - ❖ Multimodal Connectivity
 - ❖ Enhancing green energy transition and lower emissions
 - ❖ TF: Smooth international transit flows



Port growth and reform

Enabling forces

The success of port reforms will however depend on a number of **key enabling processes**, to support the driving forces and strengthen the overall **functioning of gateways** for the East and Central African region.

- Multimodal hinterland connectivity
- Lake and dry port development
- Blue collar capacity building & training centers
- Port Security
- Health & Safety
- Environmental performance
- Sustainability
- Deepsea port analysis
- Etc.

→ **Importance of international port collaboration!**

Count on PoABI 😊



Always welcome to the Port House!



Thank you!

Let's connect and co-
create your future.

Maartje Driessens

Head of business development

maartje.driessens@portofantwerpbruges.com

