



Maritime cranes

Company presentation
2026

LIEBHERR

Liebherr-MCCtec Rostock GmbH

Agenda

- 1 Liebherr Group
- 2 Liebherr-MCCtec GmbH
- 3 Product Range
- 4 The LHM
- 5 Technological Innovations

01

The Liebherr Group

Factsheet: Group overview (2024)



1949

Founded by Hans Liebherr in
Kirchdorf an der Iller,
Germany

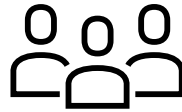


Parent company
Liebherr-International AG
based in Bulle, Switzerland

**Liebherr is a
family-run
technology
company**

13

Product segments



54,728

Employees

>40

Production sites



14,622

Revenue in € mio

>150

Companies

The Liebherr Group

A 100% independent family business



From left to right: Patricia Rűf, Sophie Albrecht, Jan Liebherr, Stéfanie Wohlfarth, Philipp Liebherr, Johanna Platt, Isolde Liebherr und Willi Liebherr

11 Divisions



EMT Earthmoving



LMT Concrete technology



HAU Refrigerators and freezers



MIN Mining



MCC Maritime and Construction



COT Components



LWE Mobile and crawler cranes



LBC Tower cranes



HOT Hotels



LVT Gear technology and automation systems



AER Aerospace and transportation systems

-
- In organisational terms, Liebherr is a **technology company** that is divided into independently operating divisions.
 - Each product segment is divided into manufacturing, sales and service companies, which are managed and operated by their divisional parent companies.

02

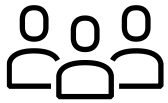
Liebherr-MCCtec GmbH

Locations

Facts and figures



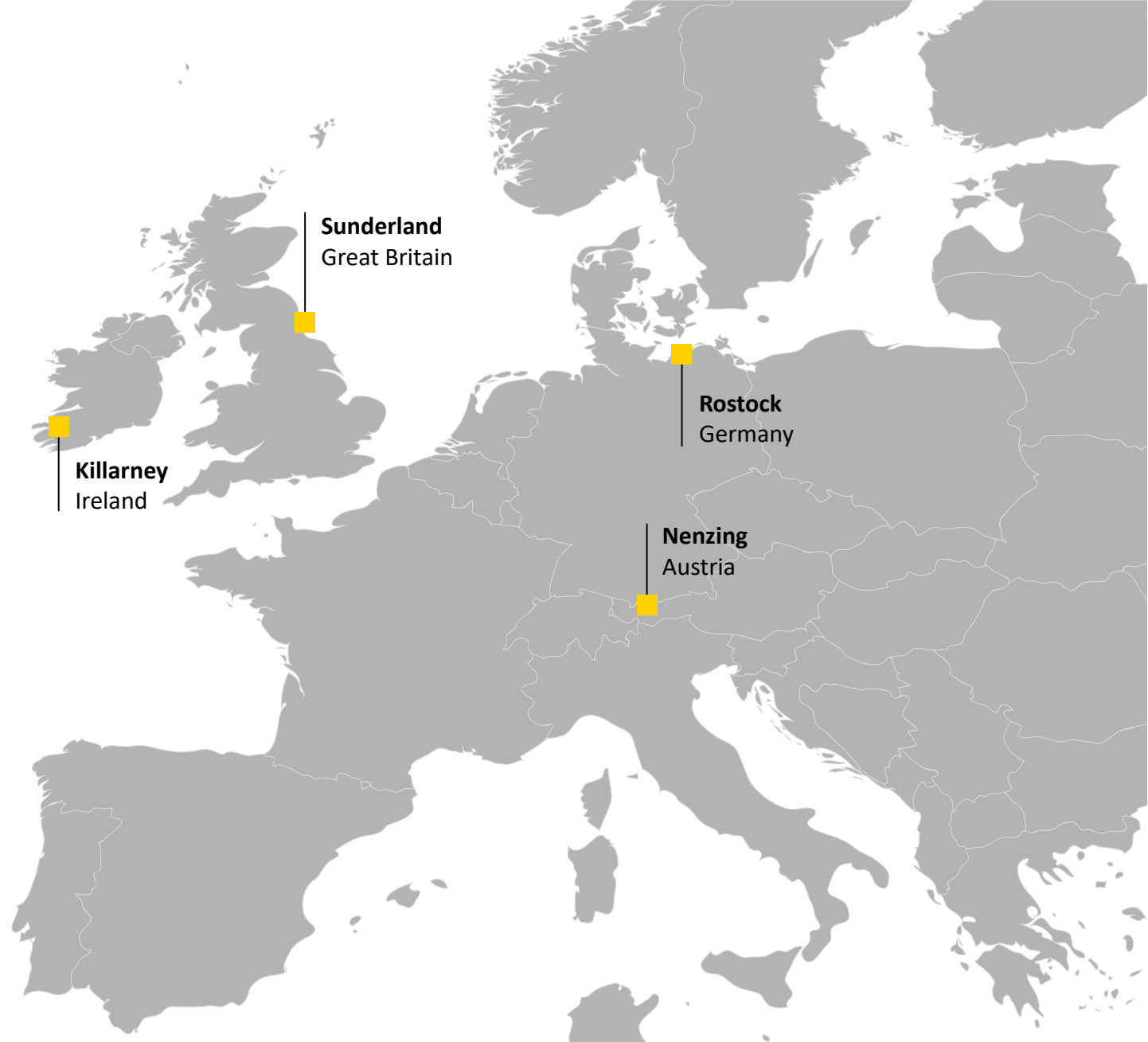
€ 1.75 bn
Turnover (2024)



6,009
Employees (2024)



50
Companies worldwide



03

Product range maritime

Port Equipment



LIEBHERR





J7522

Port of Rotterdam
MAERSK

EVERGREEN



MAERSK

MAERSK
SEALAND

Ship cranes



LIEBHERR

Transshipment solutions



LIEBHERR

Fixed port solutions



Offshore cranes



LIEBHERR

04

The LHM

Product range



One machine – many possibilities

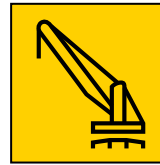


Container handling

From Coaster ships up to Ultra Large Container Vessels (ULCV).

Bulk handling

Max material handling rate of up to 2,300 tonnes per hour.



General cargo

Lifting attachments to be quickly and easily exchanged.



Heavy lift

Maximum load capacity 308 tonnes at 16 metres.





02 The LHM

Modularity

LFS – Liebherr Fixed Slewing

- Fitted on a fixed base column
- Reducing the space required



LPS – Liebherr Portal Slewing

- Rail-mounted gantry – adaptable for every rail loading
- For quays or wharves where space is limited or traffic is high
- Not restricting for quayside infrastructure and transportation of goods



02 The LHM

Modularity

LBS – Liebherr Barge Slewing

- Fitted on barges and pontoons
- Floating crane concept
- Tailor-made to individual requirements

LPM – Liebherr Portal Mobile

- Gantry which is fitted with rubber tyres
- Combination of LHM and LPS crane
- 360° mobility and all advantages of a gantry crane



05

Technological Innovations



The LHM

The LHM Unplugged

- Up to **2 km travelling distance** with 260 kWh capacity
- Fully recharged battery within 10 to 12 hours
- Up to **10 years** battery lifetime
- Emergency operation possible

Zero emission traveling for grid connected cranes

LIEBHERR



The LHM

New heat package

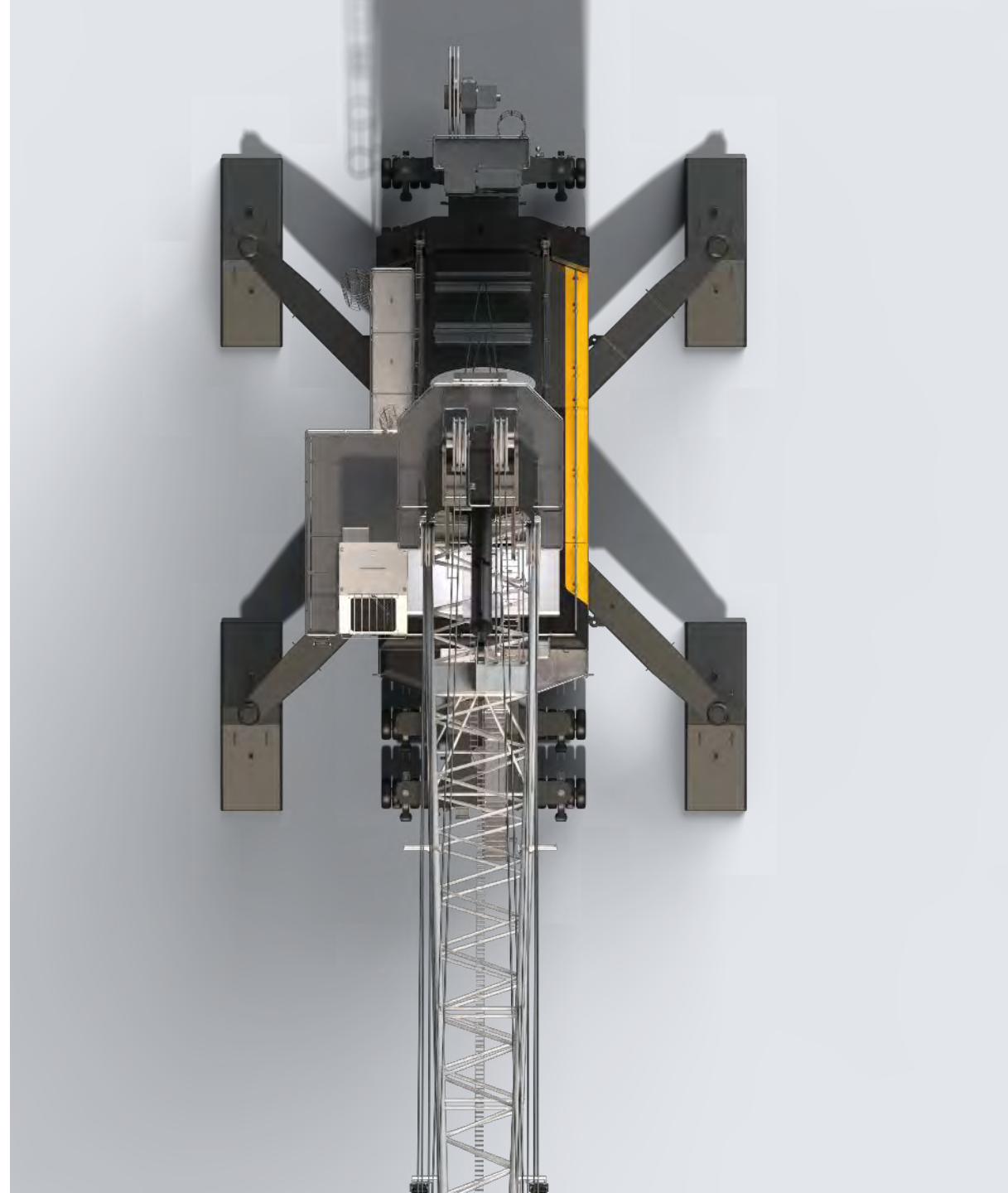
- Heat package to further improve reliability and performance under harsh temperature conditions.
- New concept for climate control
- Allows fast dehumidification of windows
- Comfortable flow of cool and warm air

The LHM

Flexible supporting base

- Outtrigger position is now an integrated system parameter due to sensor measurement
- Changing the outtrigger position requires only a software update, within technical limits

High degree of flexibility when changing the supporting base



Advanced Container Assistant

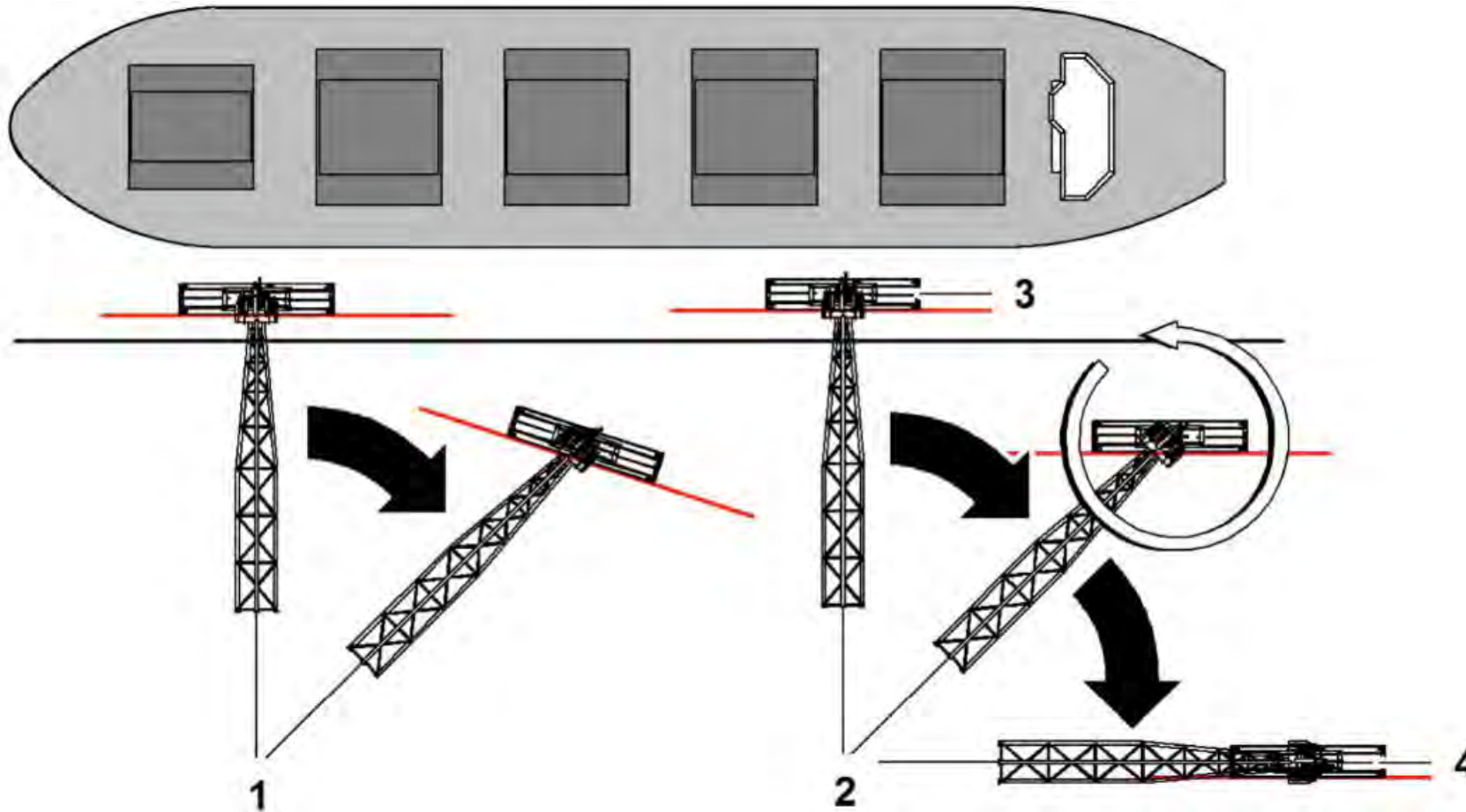
Maritime Technology

LIEBHERR

Maritime cranes



Technical Solution



Keeps the container
in the same position
during slewing

Turns the container
automatically 90° or
180°



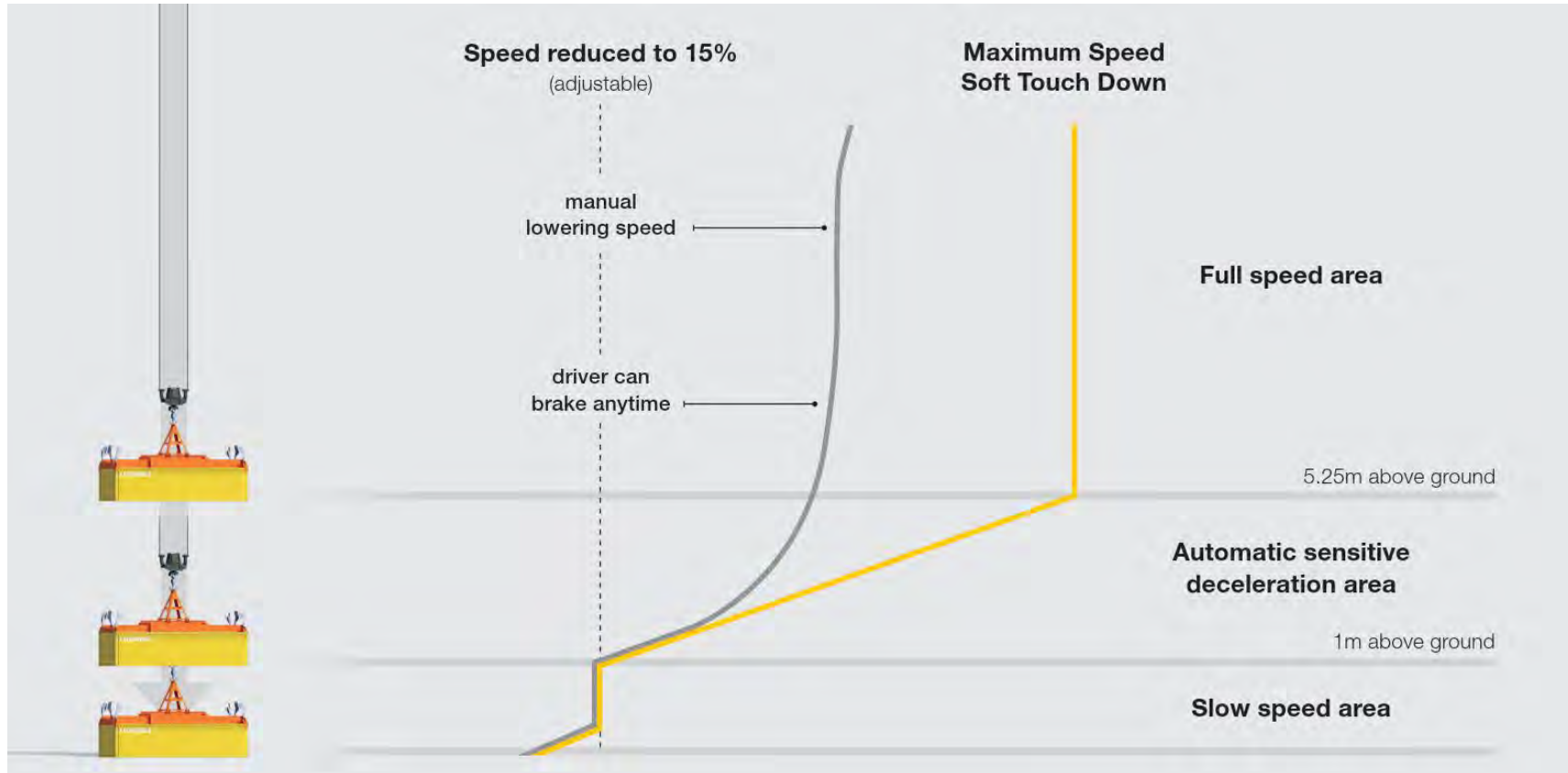
Soft Touch Down

Automatic winch speed
reduction system

LIEBHERR

Maritime cranes

Technical solution



- The indicated values (speed 15%, 5.25m above ground, 1m above ground) are not fixed.
- The values are set by the technician on site.

Teach-In[®]

Point-to-Point control for
bulk handling operation

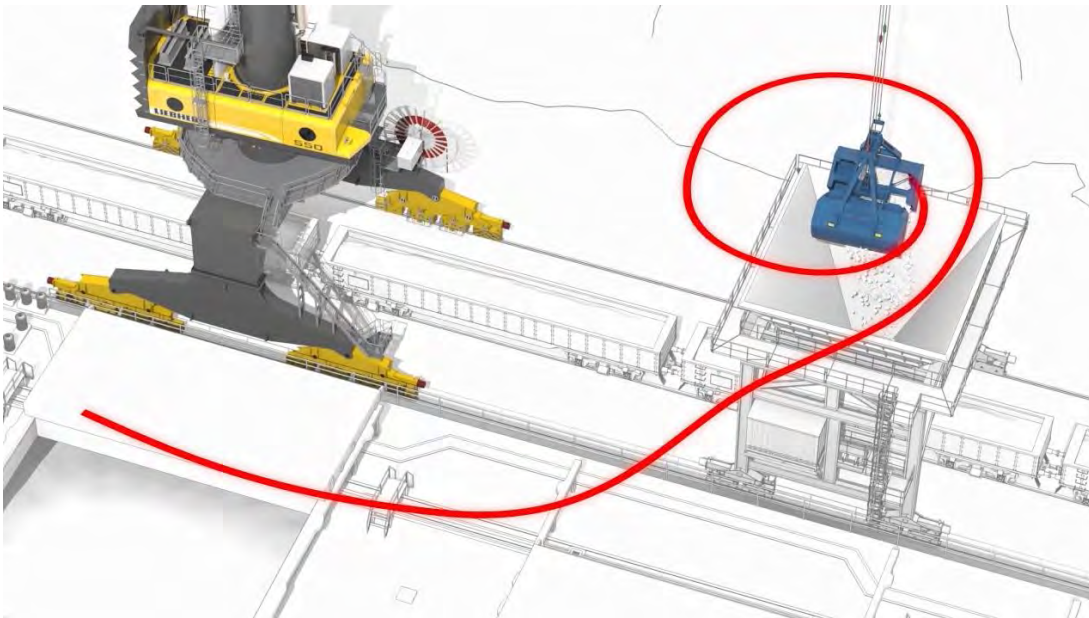
LIEBHERR

Maritime cranes



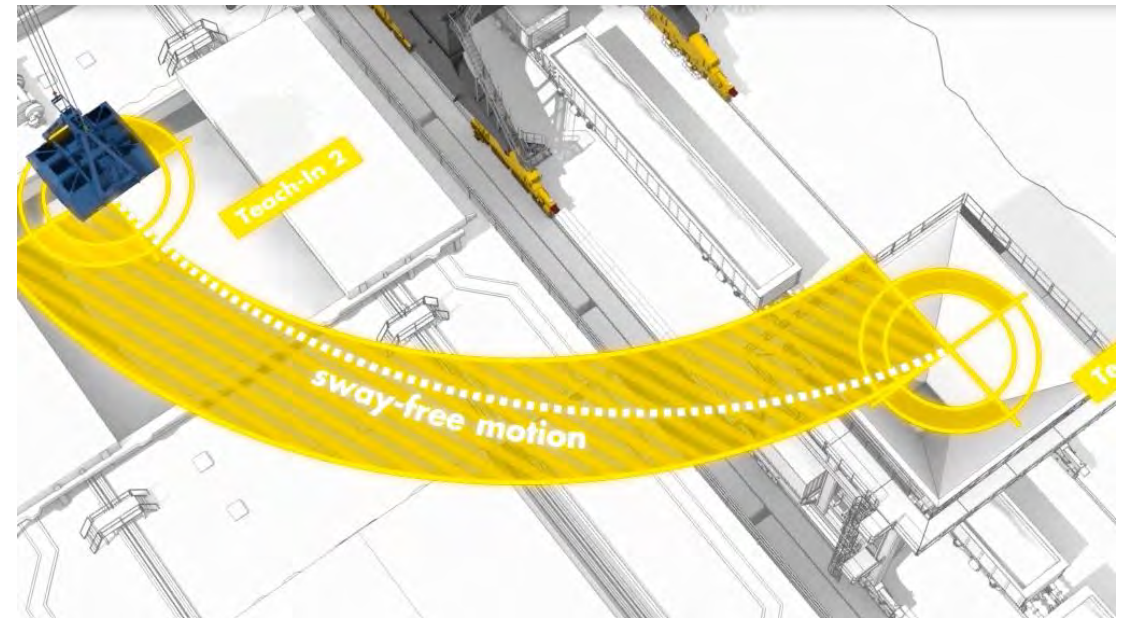
Comparison Teach-In

No Teach-In installed



- Unexperienced crane drivers cause a reduction in turnover due to unnecessary oscillating motions

Teach-In installed



- Defined luffing and slewing area with Teach-In
- Sway-free load in destination

SmartGrip®

Intelligent grabbing
technology

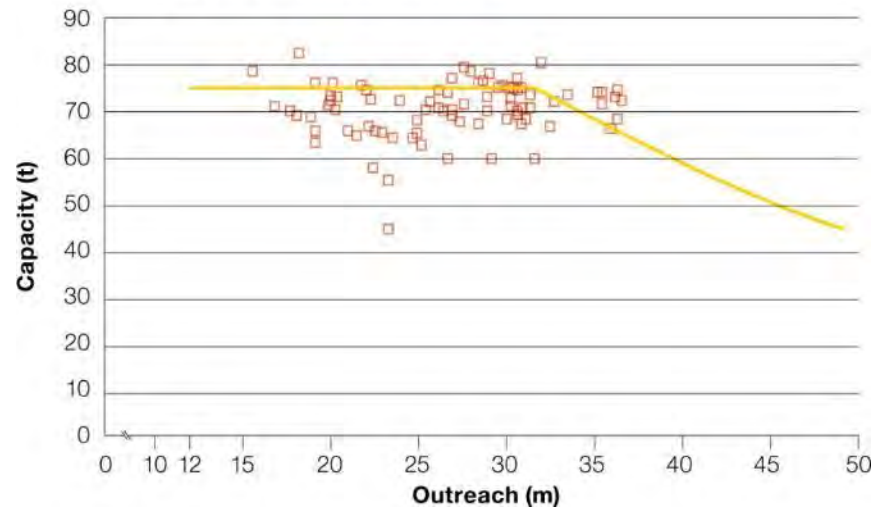
LIEBHERR

Maritime cranes

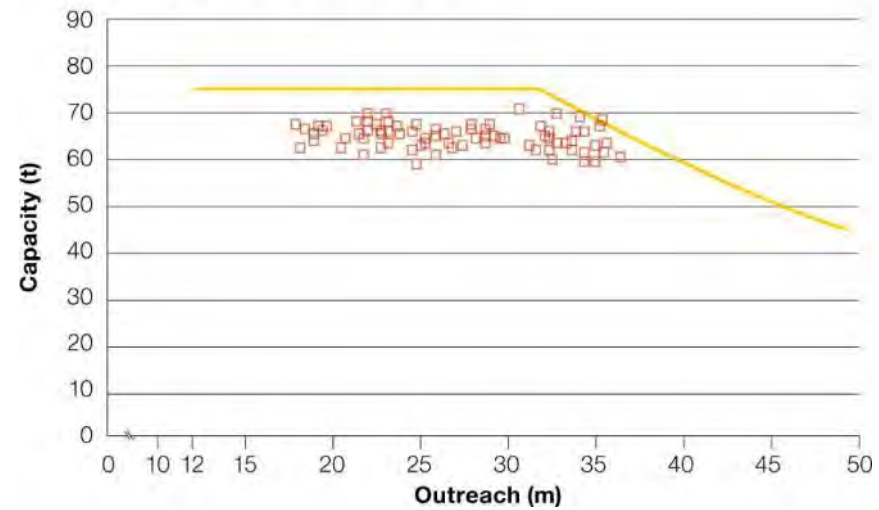


Technical Solution

Load Diagram without SmartGrip



Load Diagram with SmartGrip



Test and analysis in the field have shown an average grab filling rate of 70%. SmartGrip® utilizes the remaining 30%.

The LHM

IP-cameras

- The new ECU allows **multiple IP-camera** implementation (theoretically up to 256)
- **Better image quality** can be achieved through the IP-cameras
- Digital signal processing allows **for easier image storage** and further processing



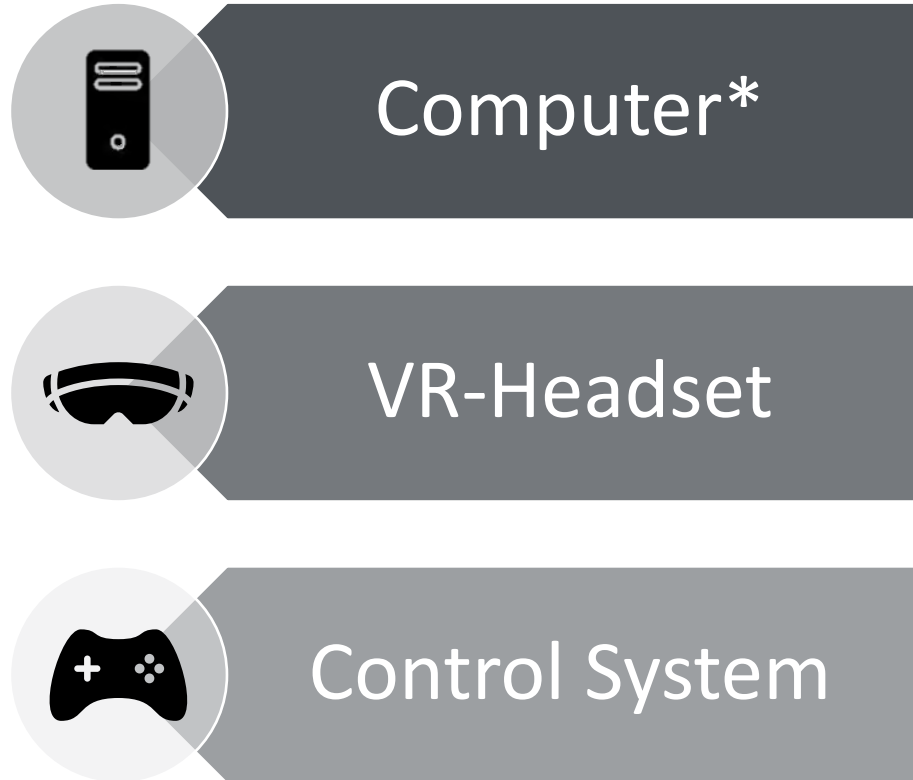
Sycratronic[®]

Automatically
synchronized tandem lifts

LIEBHERR

Maritime cranes



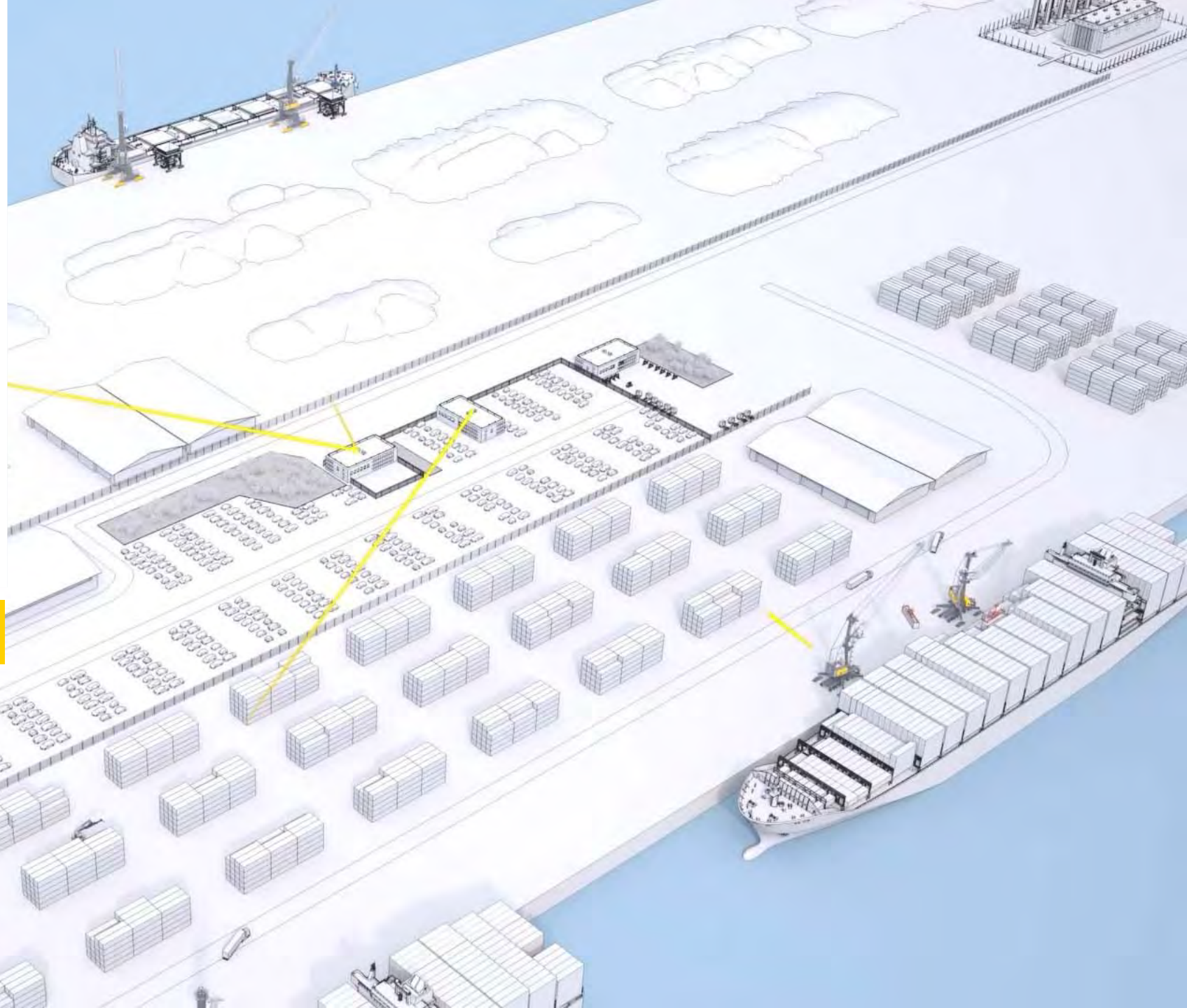


LiDAT[®] smartApp

Smart up your
performance

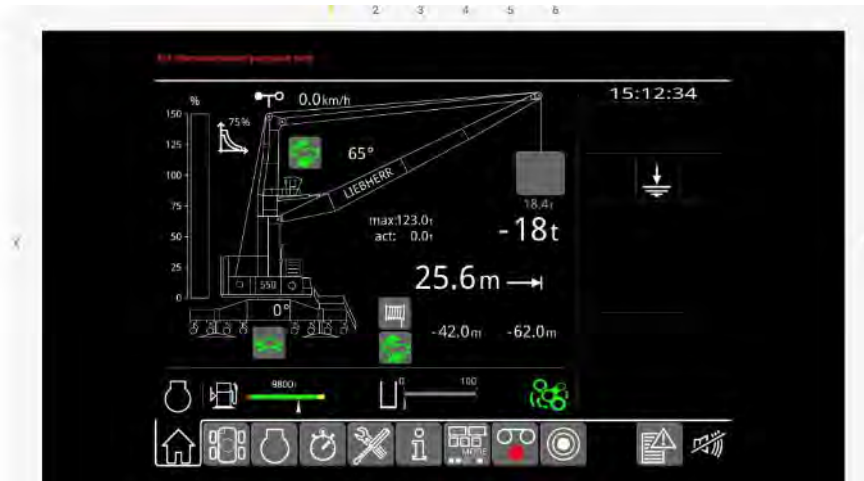
LIEBHERR

Maritime Cranes



Business Cases

Scenarios
Reports
Manual



Machines
Reports
Manual



Direct access: Information obtained directly from crane control system rather than from external sensors



Web app: Intuitive web application, available for different devices

Thank
you.



LIEBHERR