

# FROM SMART PORTS TO INTELLIGENT TRADE CORRIDORS

**Why Africa's Next Leap Is  
Architectural, Not Technological**



**Rhavy Nursimulu**

Founder, CEO & Chief Architect – LOGI-CONSULT  
Founder – Africa Intelligent Corridors 2030  
Intermodal Africa 2026 | **Djibouti**

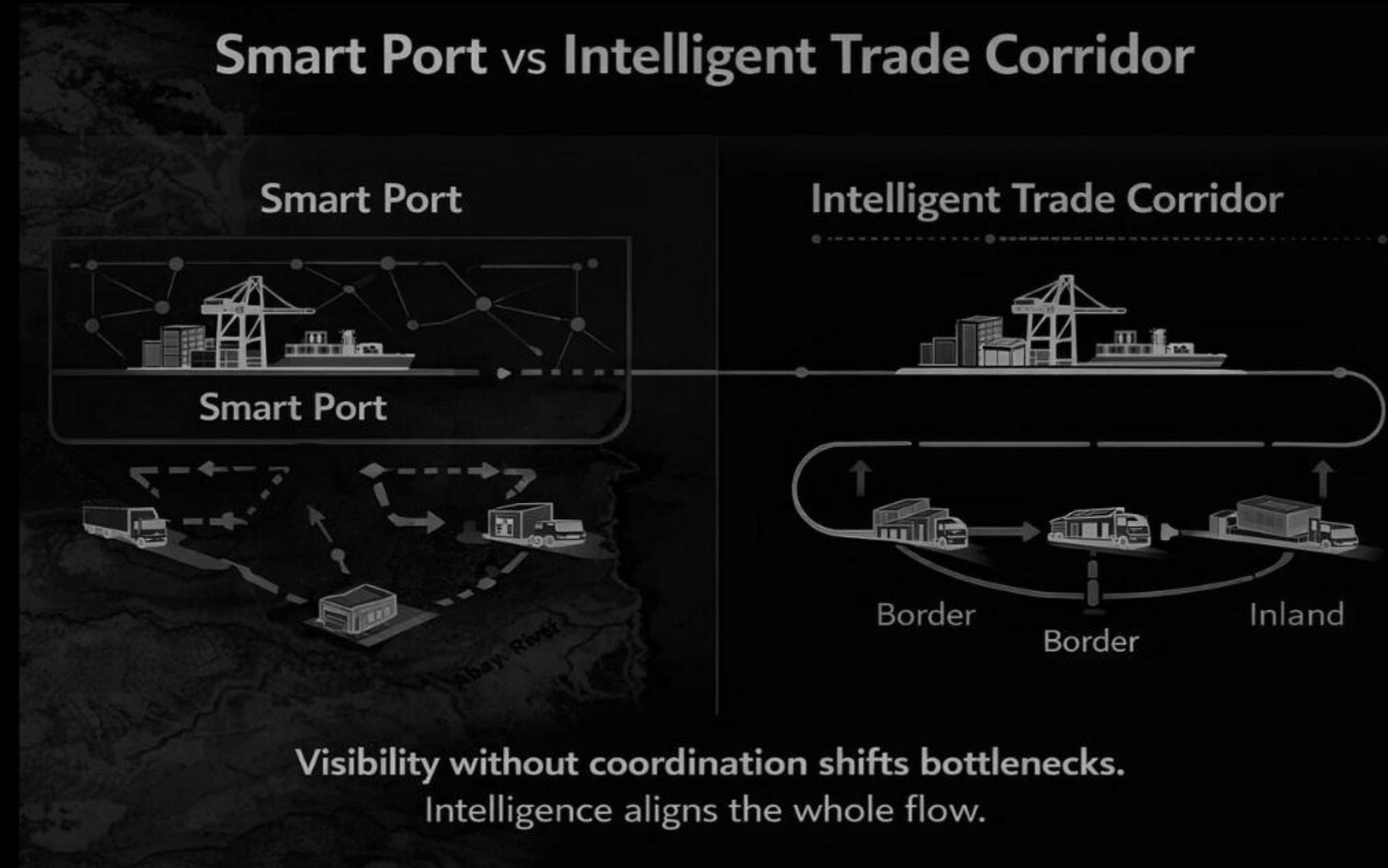




# THE LIMITS OF THE SMART PORT

## Why Smart Assets Alone Do Not Deliver Corridor Performance

- Smart ports improve local efficiency
- Fragmentation shifts bottlenecks downstream
- Visibility increases – coordination does not
- Disruptions cascade across borders and agencies



**“Visibility without coordination shifts bottlenecks.  
Intelligence aligns the whole flow..”**



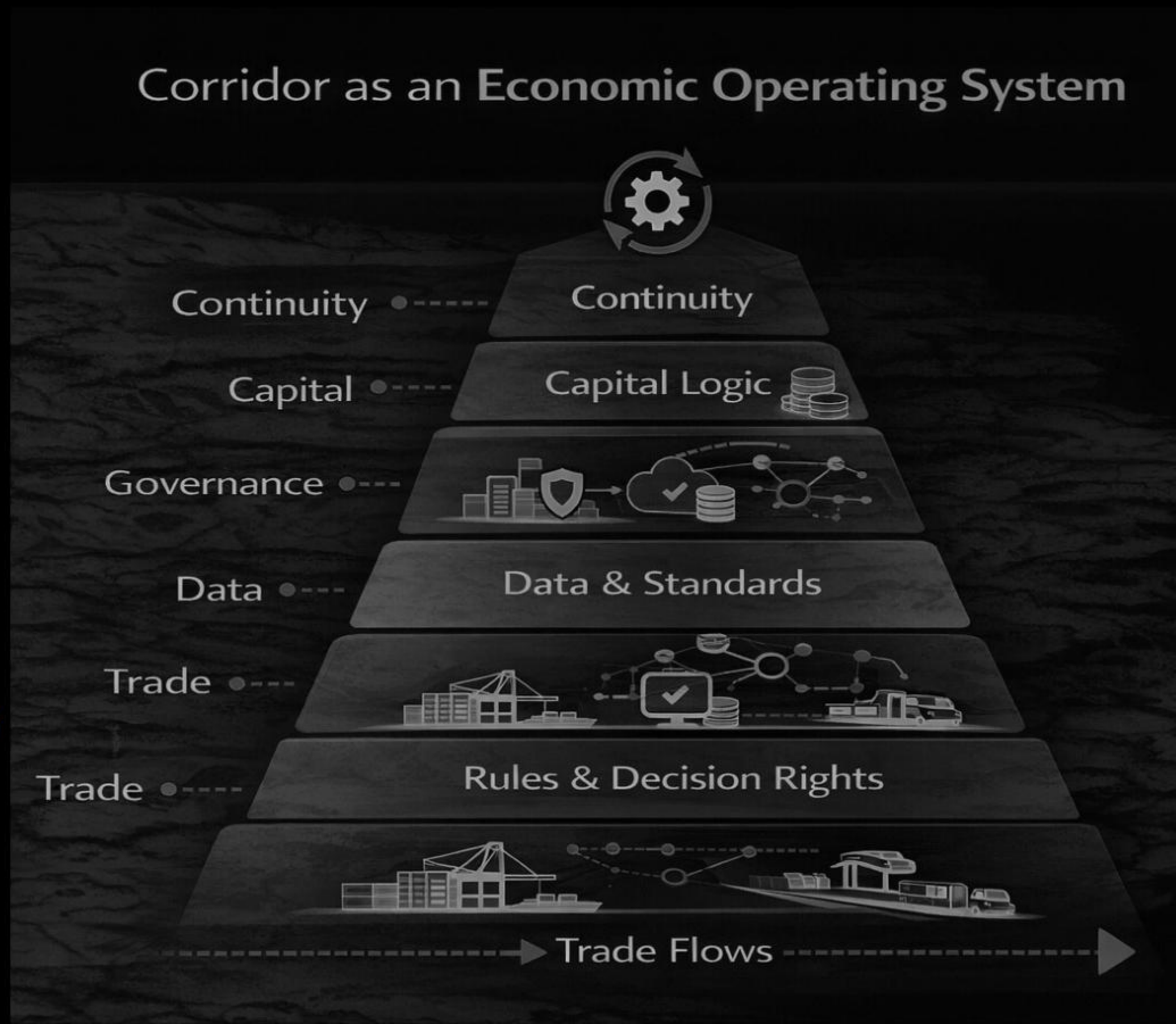
# WHAT IS AN INTELLIGENT TRADE CORRIDOR?

## Moving from Digitisation to System Intelligence

An Intelligent Trade Corridor is a system that can:

- Coordinate flows end to end
- Anticipate and absorb shocks
- Execute decisions across institutions
- Preserve continuity under stress

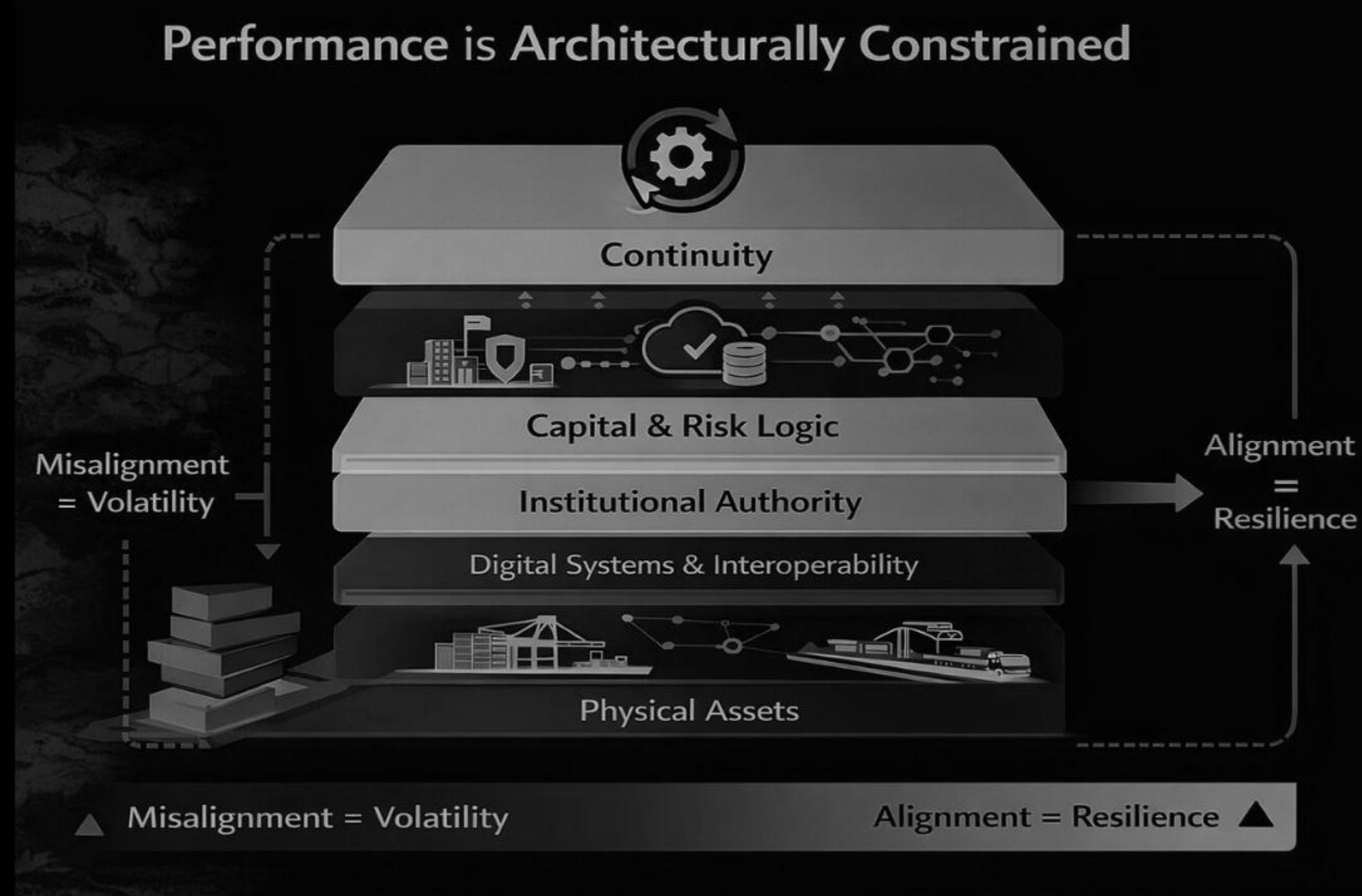
**“Throughput is vanity. Continuity is sanity.”**



# PERFORMANCE IS ARCHITECTURALLY CONSTRAINED

**"Corridors do not underperform  
because they lack technology.**

**They underperform because their  
systems are incoherent."**





# MINIMUM VIABLE ARCHITECTURE (MVA)

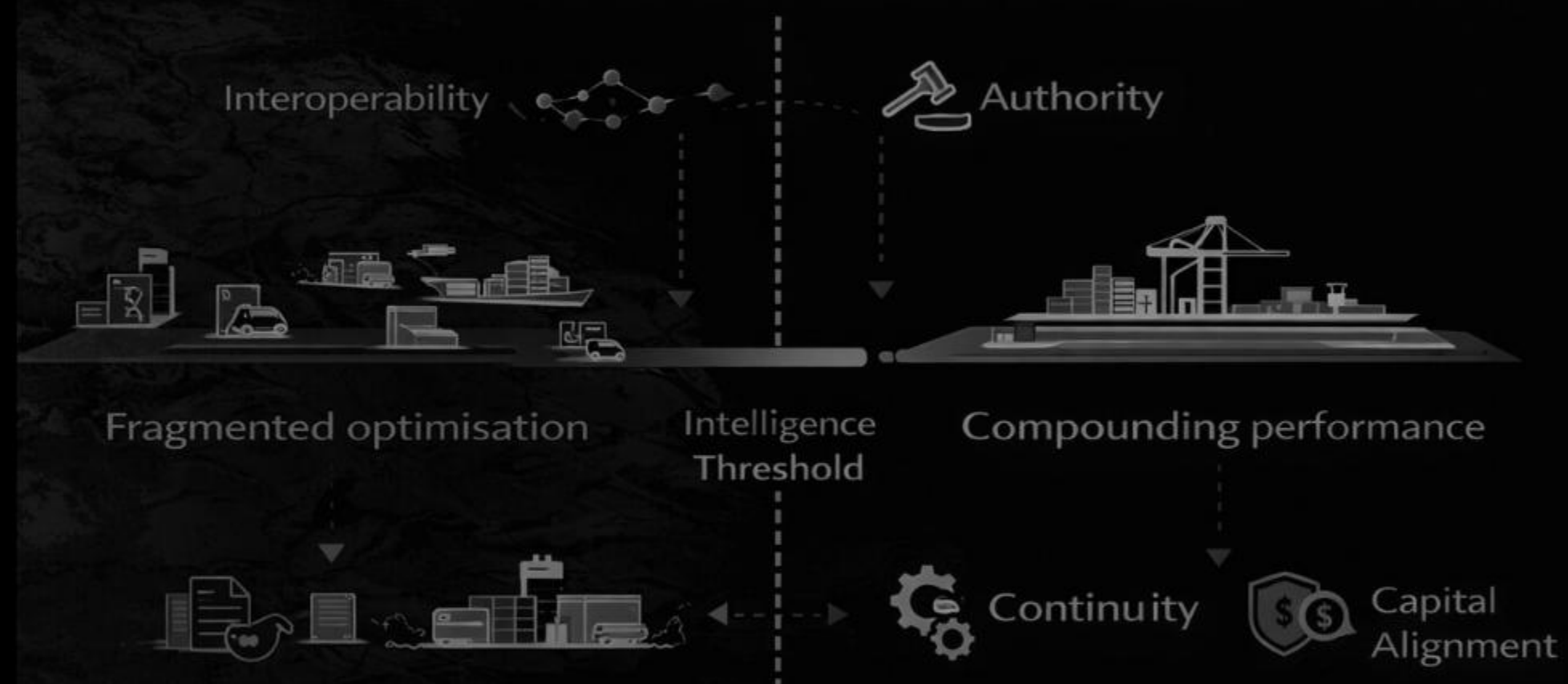
## The Threshold for Corridor Intelligence

Minimum Viable Architecture requires:

1. Interoperable digital standards
2. Clear corridor-level decision rights
3. Continuity beyond political cycles
4. Alignment of assets, data, and capital

**"You do not increment your way to intelligence.  
You cross a threshold."**

### Minimum Viable Architecture (MVA) Threshold



You do not digitise your way to intelligence.  
You cross an architectural threshold.

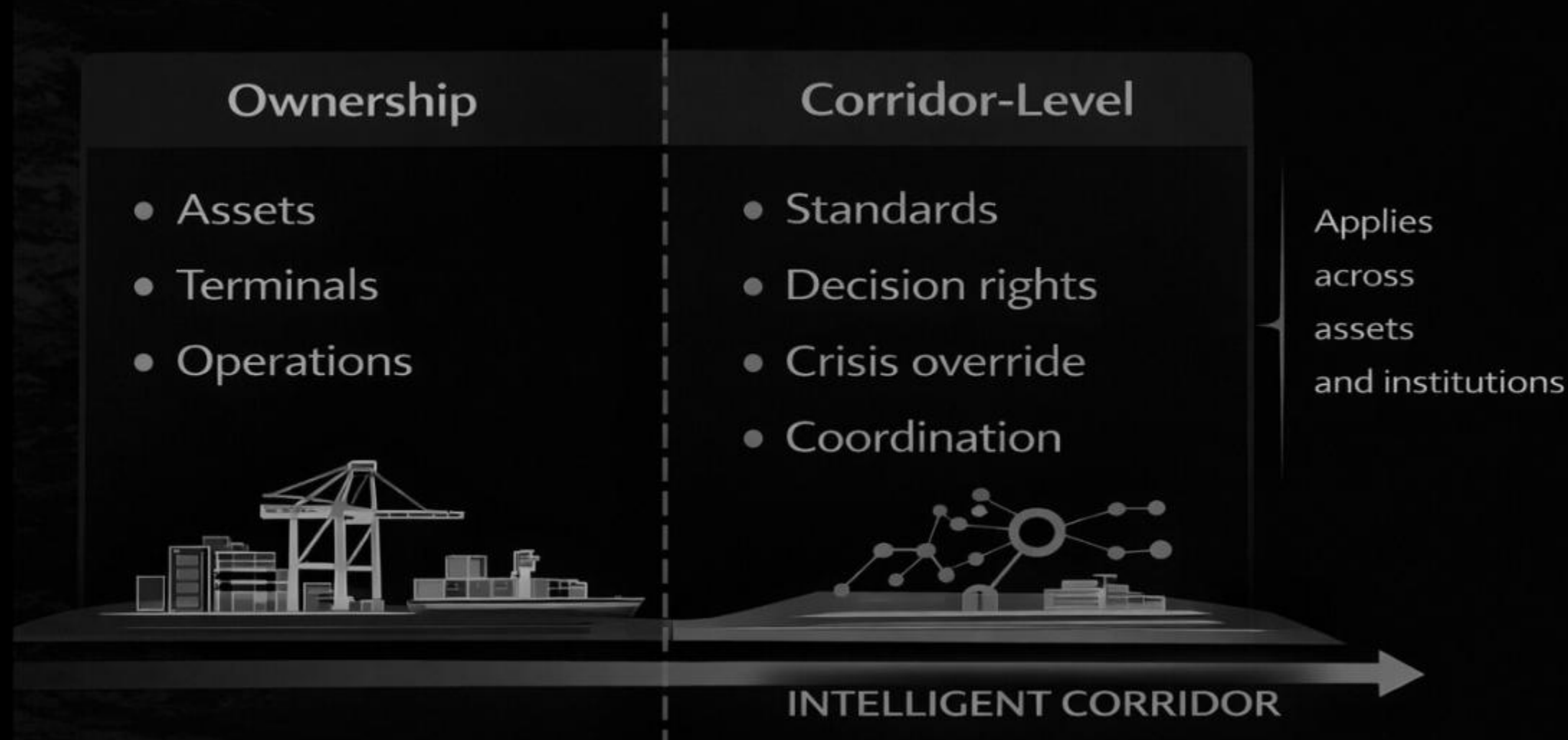
# AUTHORITY MATTERS (MVAu)

## Why Smart Assets Alone Do Not Deliver Corridor Performance

- Data without authority is advisory
- Intelligence requires executable decisions
- Authority  $\neq$  ownership
- Authority = enforceable coordination

**"Intelligence emerges from decision rights – not asset ownership."**

### Authority vs Ownership



Intelligence emerges from decision rights — **not asset possession.**



# DJIBOUTI

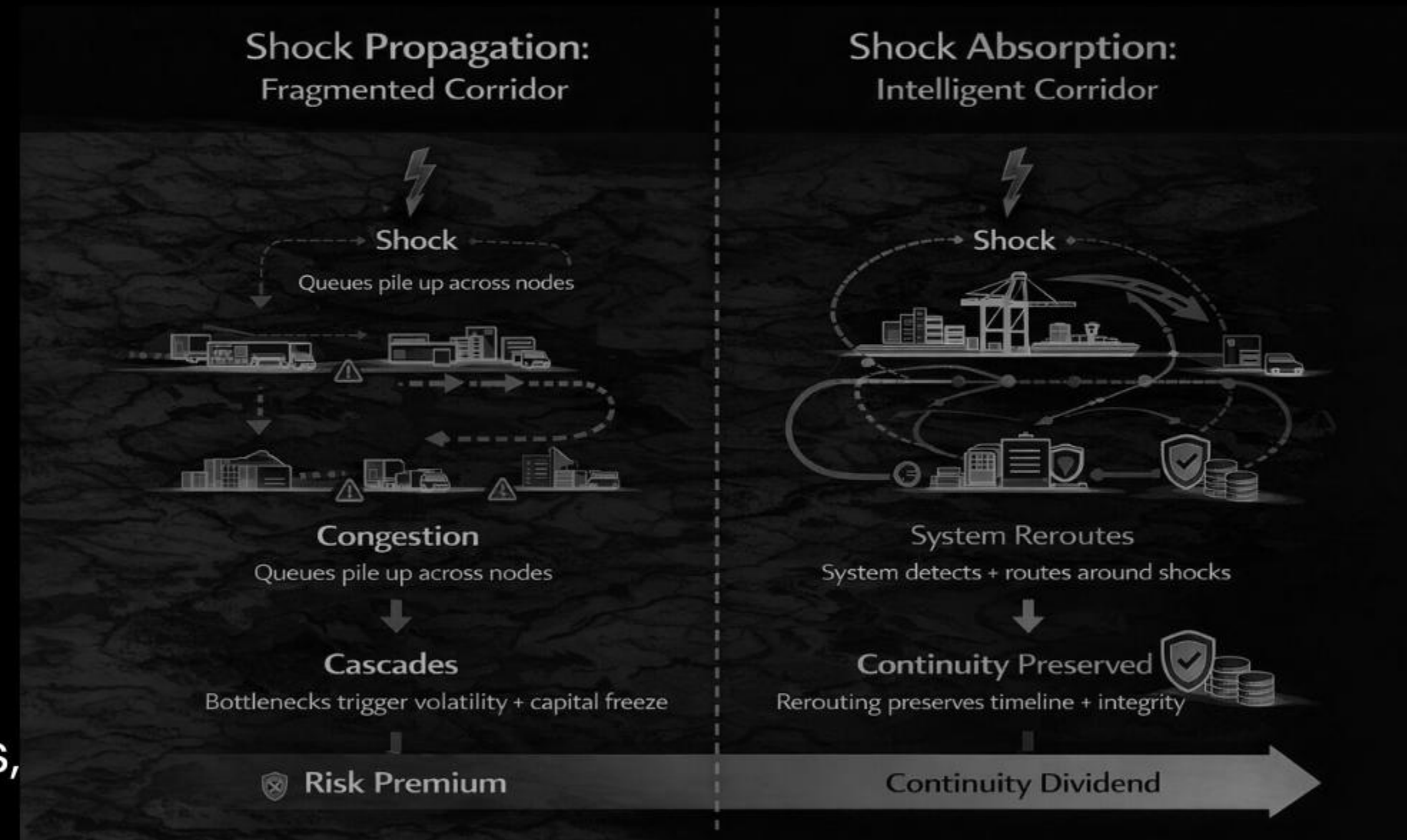
## FROM GATEWAY TO INTELLIGENT TRADE SYSTEM

Djibouti already has:

- World-class port assets
- Advanced digital initiatives
- A strategic gateway role for the Horn of Africa

### The next step:

Architecting ports, corridor roads, free zones, and borders into one operating system



**“Coordination by design –  
not expansion by default.”**

# WHY THIS MATTERS TO CAPITAL

## Architecture Compresses Risk

### Investors look for:

- Predictability
- Continuity
- Enforceable governance

### Result:

- Lower risk premiums
- Longer tenors
- Higher bankability

**“Markets price architecture before assets.”**

Architecture shapes **Risk**. Risk prices Capital.





# FROM PROJECTS TO SYSTEMS

## Old Model

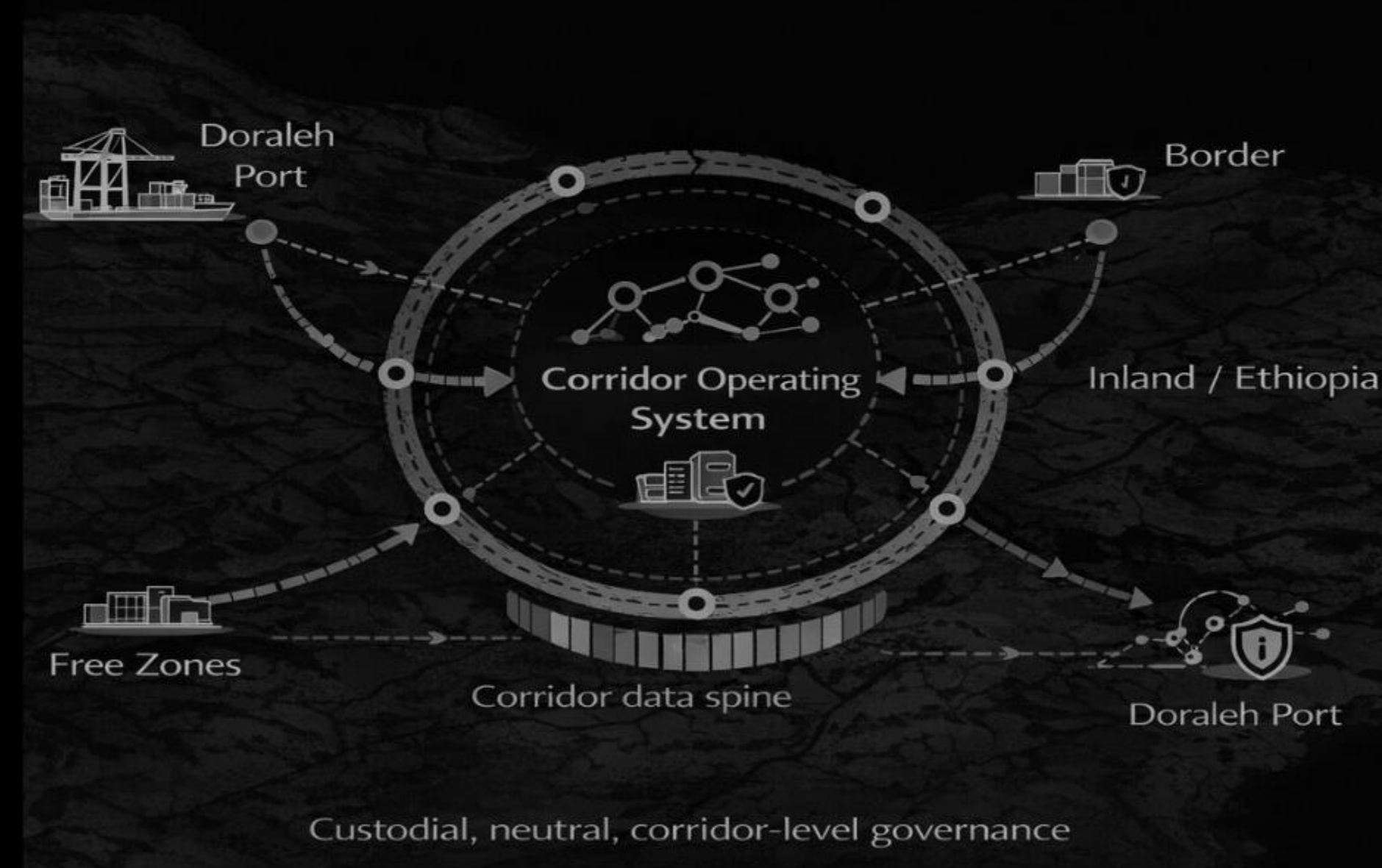
- Project-by-project
- Asset-centric
- Politically cyclical

## New Model

- Corridor-level architecture
- System governance
- Long-horizon continuity

**“Africa’s edge will not come from building more –but from designing better systems.”**

## From Gateway to Corridor Operating System





# THE QUESTION IS NO LONGER “CAN WE BUILD?”

- Can we govern, coordinate, and sustain trade corridors
- as intelligent economic systems?



# **“AFRICA DOES NOT NEED AID, AFRICA NEEDS ARCHITECTURE.”**

Rhavy Nursimulu, Founder & Chief Architect, LOGI-CONSULT





## **Rhavy Nursimulu, CMILT**

**Founder, CEO & Chief Architect – LOGI-CONSULT**

**Trade Commissioner (International) – Asian-African Chamber of Commerce and Industry (AACCI) |**  
**Research Associate – Centre de Recherche Maritime, Portuaire et Logistique (CREMPOL)**

Rhavy Nursimulu is the Founder and Chief Architect of LOGI-CONSULT, a firm shaping Africa's logistics and trade architecture through innovation, integration, and strategic capital mobilisation. In 2025, he authored "Mombasa Port & the Northern Corridor in a Fragmented World," a blueprint positioning Mombasa as Africa's intelligent, climate-aligned, and investment-ready trade artery.

