



# **NAMIBIAN PORTS AUTHORITY**

## **PORT DEVELOPMENTS 2025/2026**

**TREVOR NDJADILA**

**Manager: Business Development**

**12 February 2026**

# OUR DUAL MANDATE

## Public Service Delivery Objectives

- Develop, manage and operate all Namibian ports
- Provide port facilities and services at the least possible cost
- Manage lighthouses and other navigational aids in Namibia's territorial waters

## Commercial Objectives

- Conduct business in accordance with sound and generally accepted business principles
- Ensure port facilities and services are operated in such a manner to obtain maximum usage of such facilities
- Provide services at competitive prices which will yield a fair and reasonable profit

**Our strategy must therefore strike an appropriate balance required between public requirements and commercial objectives**





# 1994 2025

## Laying the **Foundation**



The Namibian Ports Authority Act 1994 (No.2 of 1994) is enacted, under the Ministry of Works, Transport, and Communication (MWTC), charged with managing, operating, and developing Namibia's ports.

### NAMPORT ACTIVITIES



Vessel Traffic



Container Cargo



Import/Export



Vessel Repair



Fuel Imports



Passenger Traffic



Supporting Fishing Industry



Warehouse Facilities

## Looking **Ahead**



**8.42 Million Tons**

TOTAL CARGO THROUGHPUT

**253,996 TEUs**

TOTAL CARGO HANDLED

**0.76% | N\$ 20.9Billion**

NAMPORT CONTRIBUTION TO NAMIBIA GDP OVER 30 YEARS

SADC 2023 GDP (CONVERTED TO NAD) **N\$ 15Trillion** (Per Year)

Average

**N\$ 696Million** (Per Year)

### COMMODITIES

Copper Cathode ◯ Copper Concentrate ◯ Zinc Concentrate ◯ Sulphur ◯ Lithium ◯ Uranium oxide concentrate ◯ Fertilizer  
Ammonium nitrate ◯ Petroleum ◯ Wheat ◯ Machinery ◯ Empty containers ◯ Petroleum products ◯ Wet fish ◯ Machinery  
Salt bulk ◯ copper ◯ Lead concentrates ◯ Charcoal ◯ Wooden Products ◯ Marble and granite

*Africa's Ultimate Ports Experience*

[f](#) [in](#) [v](#) [g](#) [www.namport.com](#)

NAMIBIAN **PORTS** AUTHORITY



[www.namport.com](http://www.namport.com)

# VISION, MISSION AND VALUES

## NEW (2026-2031)

### VISION

To be Africa's leading maritime logistics hub.

### MISSION

To provide integrated port and logistics solutions, connecting Africa to global markets and creating sustainable value for all our stakeholders.

### CORE VALUES

Caring

Collaborative

Committed

Connected

Creative

Credible

## OLD (2021-2026)

### VISION

To be the best performing seaports in Africa.

### MISSION

To provide excellent port services to all seaborne trade, creating sustainable value for all our stakeholders.

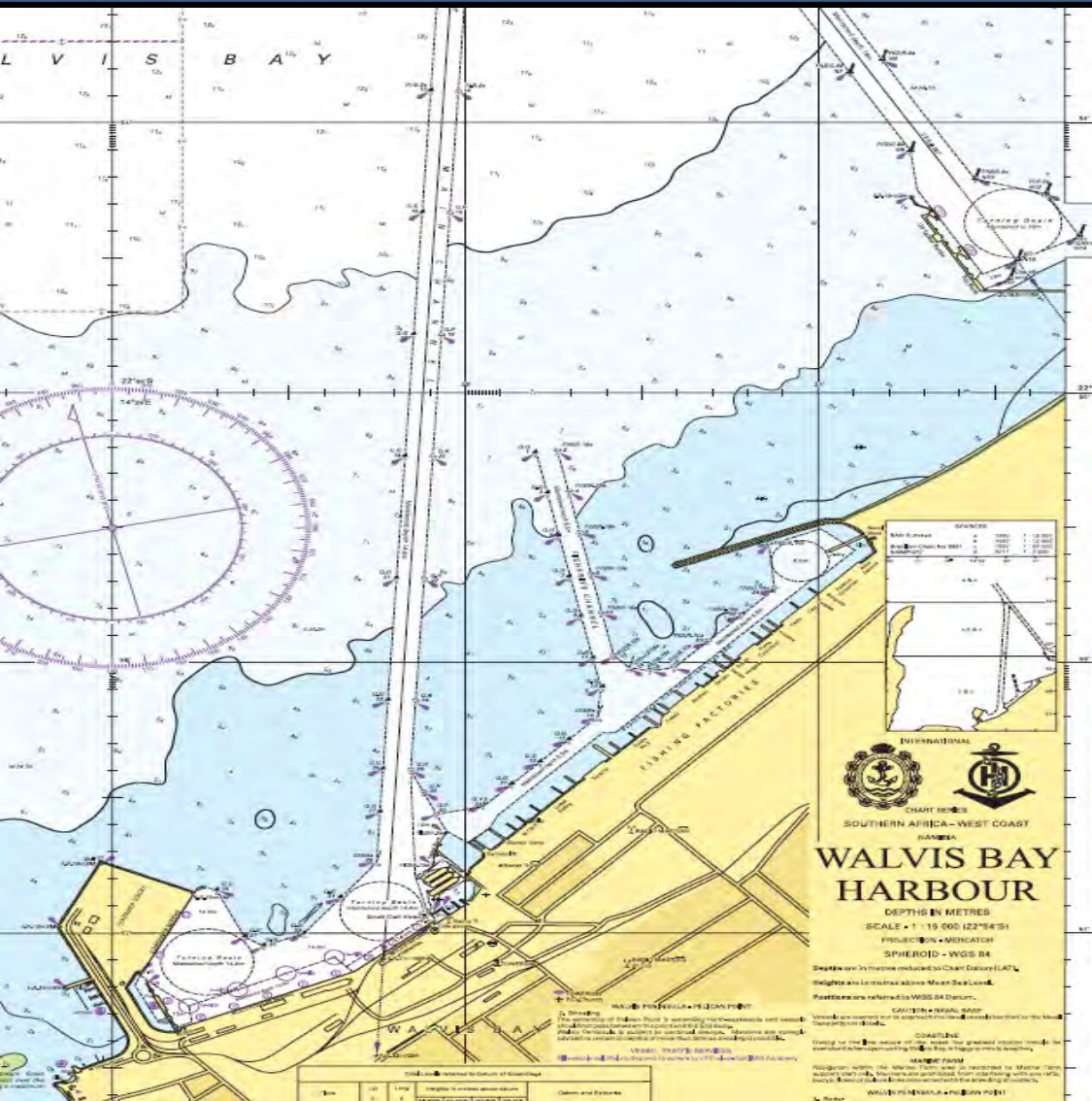




# PORT OF WALVIS BAY SOUTH PORT INFRASTRUCTURE DEVELOPMENT PROJECTS



# CAPITAL & MAINTENANCE DREDGING COMPLETED





# BERTH 9 MODIFICATION COMMENCING THIS FY



Image © 2025 Airbus  
Data SIO, NOAA, U.S. Navy, NGA, GEBCO

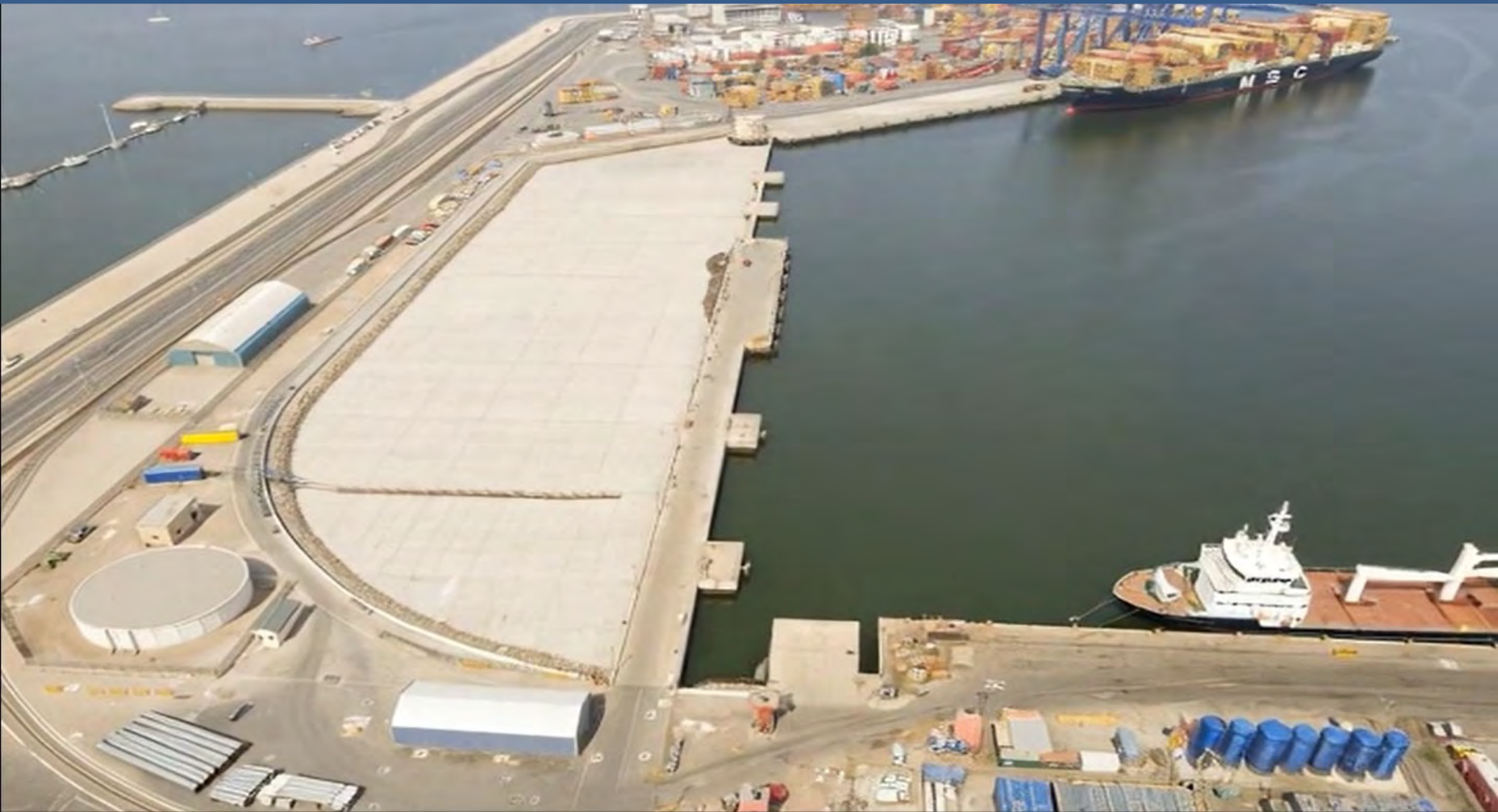


# PLANNED BERTH 9 MODIFICATION SKETCHES





# PLANNED BERTH 9 MODIFICATION 3D VISUAL





# BERTHS 1 TO 8 RECONSTRUCTION DESIGNS STARTED

4/2023

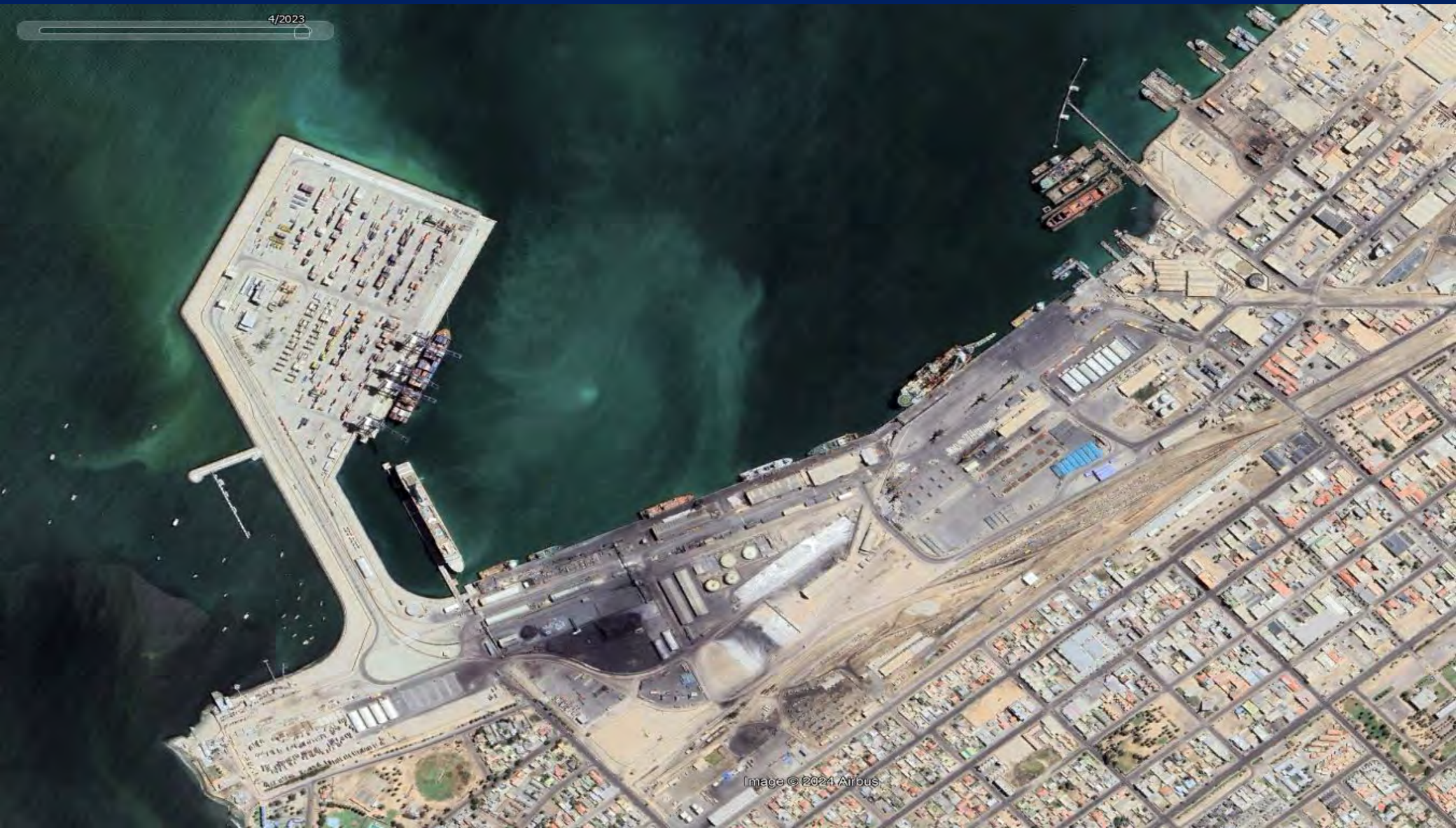


Image © 2024 Airbus





# **PORT OF WALVIS BAY NORTH PORT INFRASTRUCTURE DEVELOPMENT PROJECTS**

140 R2 - PWB NORTH PORT MASTER PLAN REVISED - 10 JULY 2025 - R2.dwg   
 Plot Date: 7/11/2025 10:52:04 am   
 Plot Device: AutoCAD PDF (General Documentation).pc3   
 Page Setup: ---   
 Plotted by: Elanor W. Gelderboom P. Eng. (Newport) : 229 R2







# PORT OF LUDERITZ EXPANSION PROJECTS

## IDENTITY MAY BE AFFECTED BY SUPPLY BASE. JULY 2023/2024. PLOTTED BY: ELIZABETH W. CALDWELL, Ph.D., Eng. (Hampshire)





# PORT OF LUDERITZ – ANGRA POINT

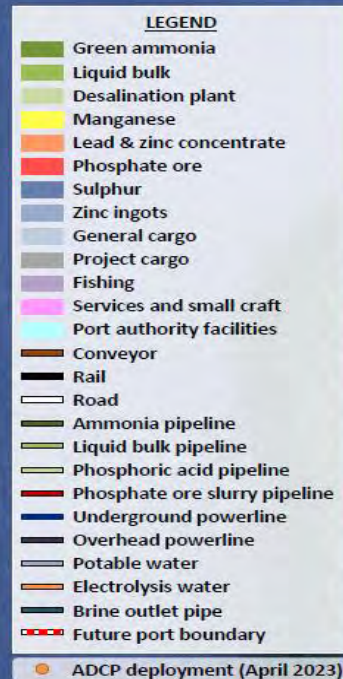
## Master Plan Study for the Proposed Deepwater Port at Angra Point, Port of Lüderitz Concept Development and Cost Estimate



Port of Rotterdam



### Medium-Term Layout (2043)



- Angra Point development to be built, with first ammonia export berth commissioned by 2028
- Once additional berths are built the existing dry bulk operations will be relocated from current port to new port
- Oil & Gas activities will expand further and continue at the current port.



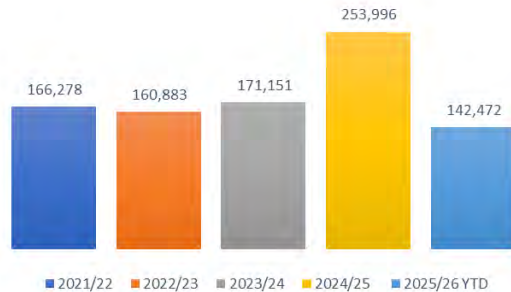


# OPERATIONAL PERFORMANCE

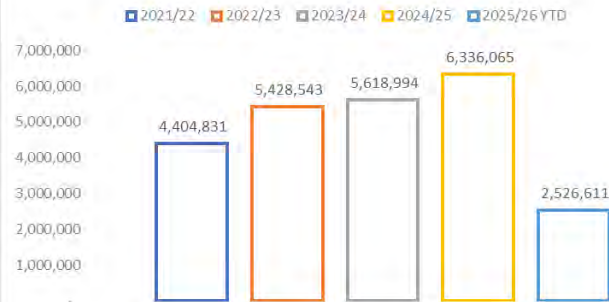


# OPERATIONAL PERFORMANCE

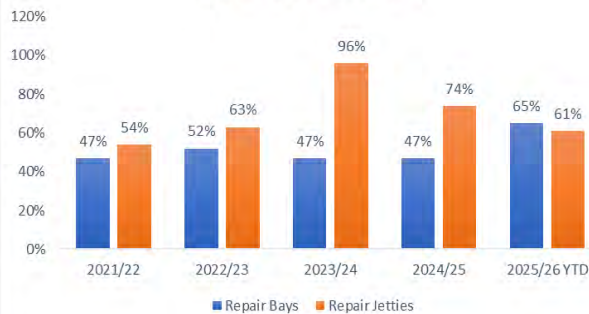
Container Volumes Per Annum (TEUs)



General Cargo (Metric Tonnes)



Syncrolift occupancy



Vessel Statistics



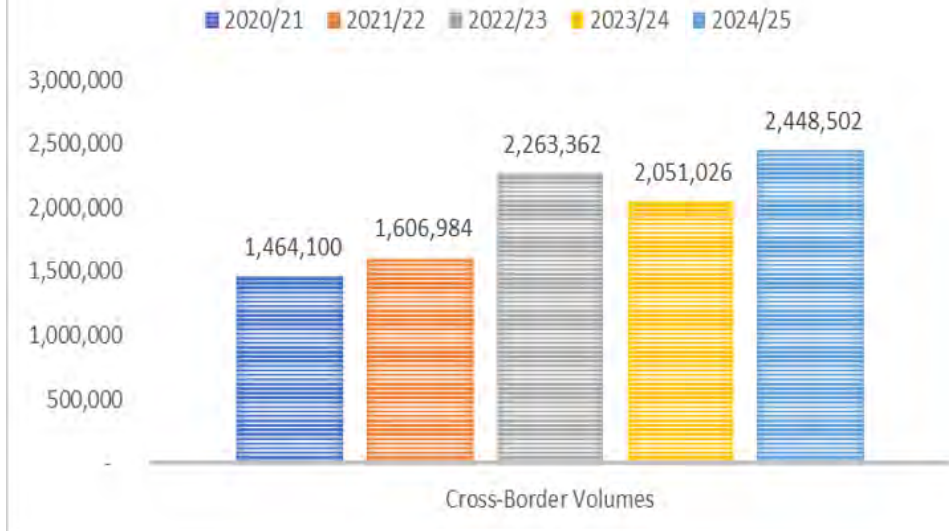
For FY 2024/25, strong performance was recorded across all cargo categories, with general cargo increasing by 13%, while container volumes increased by 33%.

Year to date, performance container performance is up 41%, while general cargo is down 7%. Syncrolift performance has increased at the bays, while the jetty occupancy is down compared to prior year. Despite a slight reduction in vessel calls, gross tonnages have increased due to the prevalence of larger vessels.



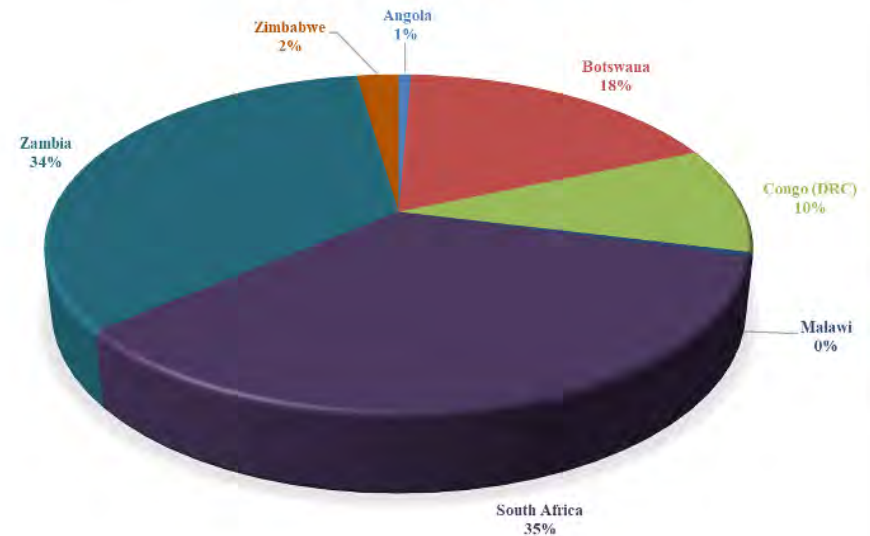
# OUR CROSS-BORDER PERFORMANCE

## CROSS-BORDER VOLUMES



Cross-border volumes increased by 19% after a decline in the prior year.

## Crossborder Cargo Market Share (%) April 2024 - March 2025



The growth was supported by a recovery in DRC and Botswana cargo on the back of increased outputs from the mines, while Zambia also benefited from strong growth in return cargo. However, volumes from South Africa declined.



# KEY VOLUME DRIVERS

**Nickel**



**Manganese**



**Ship Spares**



**Sulphur**



**Fertilizer**



**Cruise Lines**



**Vessel calls**





# UPGRADING OUR CAPACITY

## Mobile Cranes



## Wharf Cranes



## Tug Boat



## Fork Lift



# Namport's Strategic Shift from Hybrid to **Landlord Port Model**

- Coinvestment with the private sector.
- Mainstreaming of participation in port operations by the greater investment community.
- Focus on capacity and efficiency enhancement and competitiveness.



# EMBEDDING PARTNERSHIP



# ADVANCING PARTNERSHIPS

**Salt Warehouse**



**Mud Plants**



**AGL Warehouse**



# Our Customer Value Proposition

Our customer value proposition is enhanced by the following value drivers which differentiate Namport's services from those of our competitors

CVP Drivers	Current Standing	Future Targets
<b>Connectivity</b>	<ul style="list-style-type: none"><li>Increased vessel traffic to the PoWB through improved service quality level</li><li>High freight charges</li><li>Draft restriction</li></ul>	<ul style="list-style-type: none"><li>Attract larger vessels to enhance economies of scale</li><li>Dredging to accommodate larger vessel</li></ul>
<b>Productivity</b>	<ul style="list-style-type: none"><li>Improved berth productivity</li></ul>	<ul style="list-style-type: none"><li>Acquiring modern cargo handling equipment</li><li>Training and development of personnel</li><li>Full rollout GCTOS</li></ul>
<b>Accessibility</b>	<ul style="list-style-type: none"><li>Increased demand by new economic sectors (O&amp;G, GH) Geopolitical tension.</li><li>Limitation of entrance channel &amp; turning basin</li></ul>	<ul style="list-style-type: none"><li>Increased vessel calls by larger vessel due to widening of entrance channel &amp; turning</li></ul>
<b>Capacity</b>	<ul style="list-style-type: none"><li>Multipurpose Terminal (WVB)</li><li>NCT Concessioning</li><li>Diversified customer &amp; tenants' portfolio</li></ul>	<ul style="list-style-type: none"><li>Quay wall extension &amp; Port Development (LUD)</li><li>Future Nort Port Development (WVB)</li></ul>
<b>Compliance</b>	<ul style="list-style-type: none"><li>Recertification of ISO 9001 – Quality of Service</li></ul>	<ul style="list-style-type: none"><li>Landlord model</li><li>Enhance customer satisfaction index 80%</li></ul>
<b>Cost/Pricing</b>	<ul style="list-style-type: none"><li>Tariff Benchmark Study</li></ul>	<ul style="list-style-type: none"><li>Competitive pricing strategy</li></ul>

# MSC names Walvis Bay as new Regional Transshipment Hub

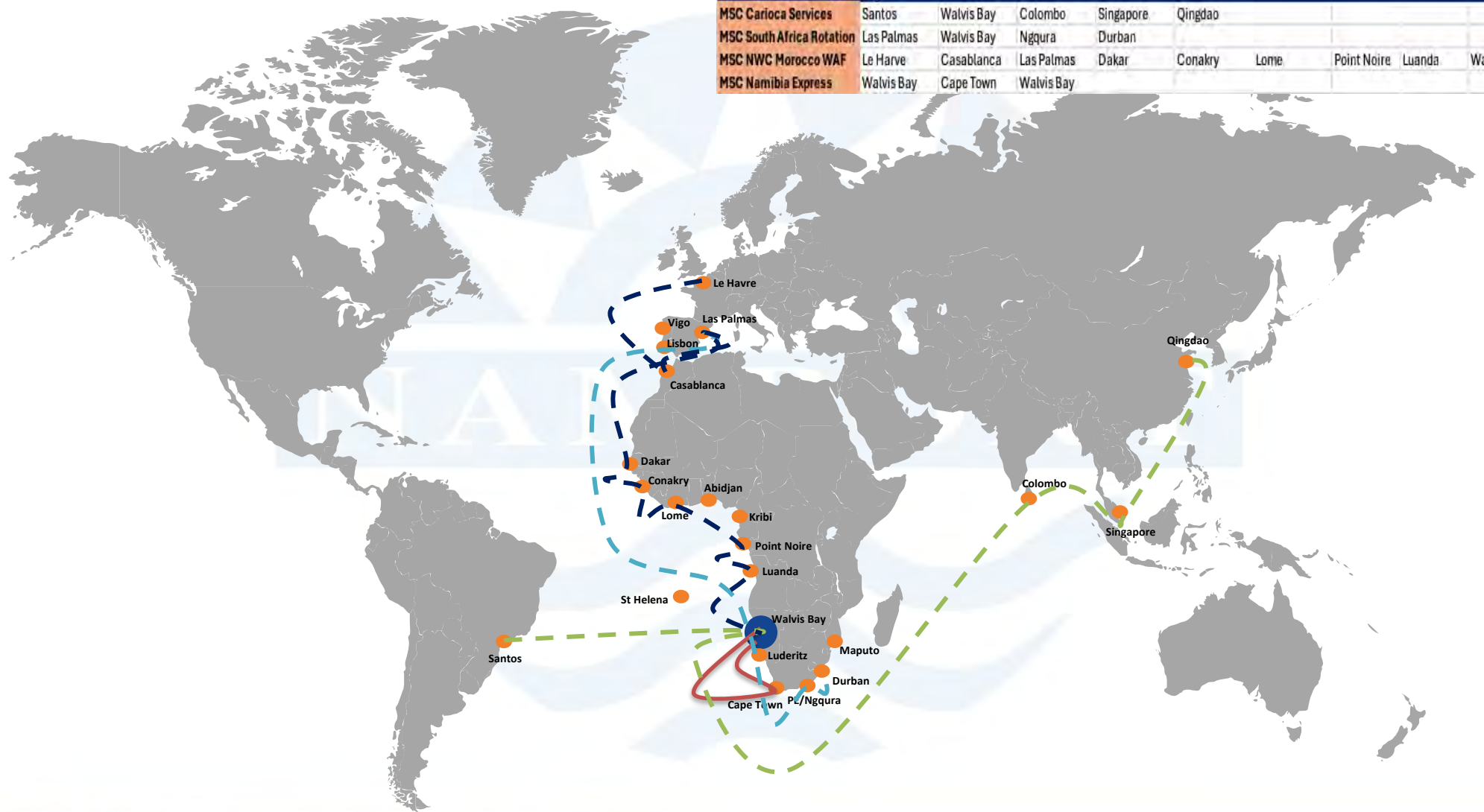




# Shipping Line Connectivity: MSC

## Container Services - Walvis Bay

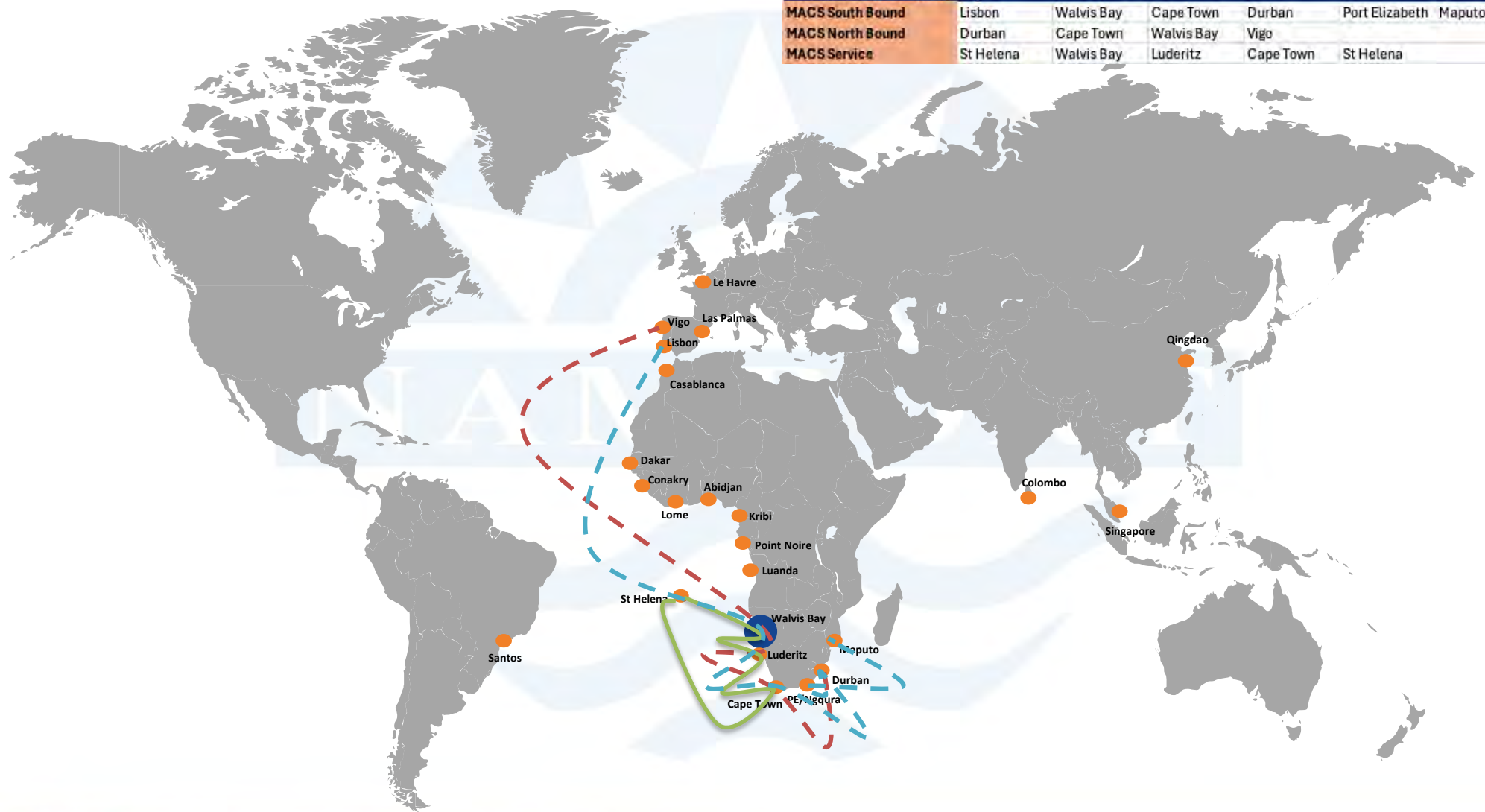
<b>MSC Carioca Services</b>	Santos	Walvis Bay	Colombo	Singapore	Qingdao				
<b>MSC South Africa Rotation</b>	Las Palmas	Walvis Bay	Ngqura	Durban					
<b>MSC NWC Morocco WAF</b>	Le Harve	Casablanca	Las Palmas	Dakar	Conakry	Lome	Point Noire	Luanda	Walvis Bay
<b>MSC Namibia Express</b>	Walvis Bay	Cape Town	Walvis Bay						



# Shipping Line Routes: MACS

## Container Services - Walvis Bay

<b>MACS South Bound</b>	Lisbon	Walvis Bay	Cape Town	Durban	Port Elizabeth	Maputo
<b>MACS North Bound</b>	Durban	Cape Town	Walvis Bay	Vigo		
<b>MACS Service</b>	St Helena	Walvis Bay	Luderitz	Cape Town	St Helena	

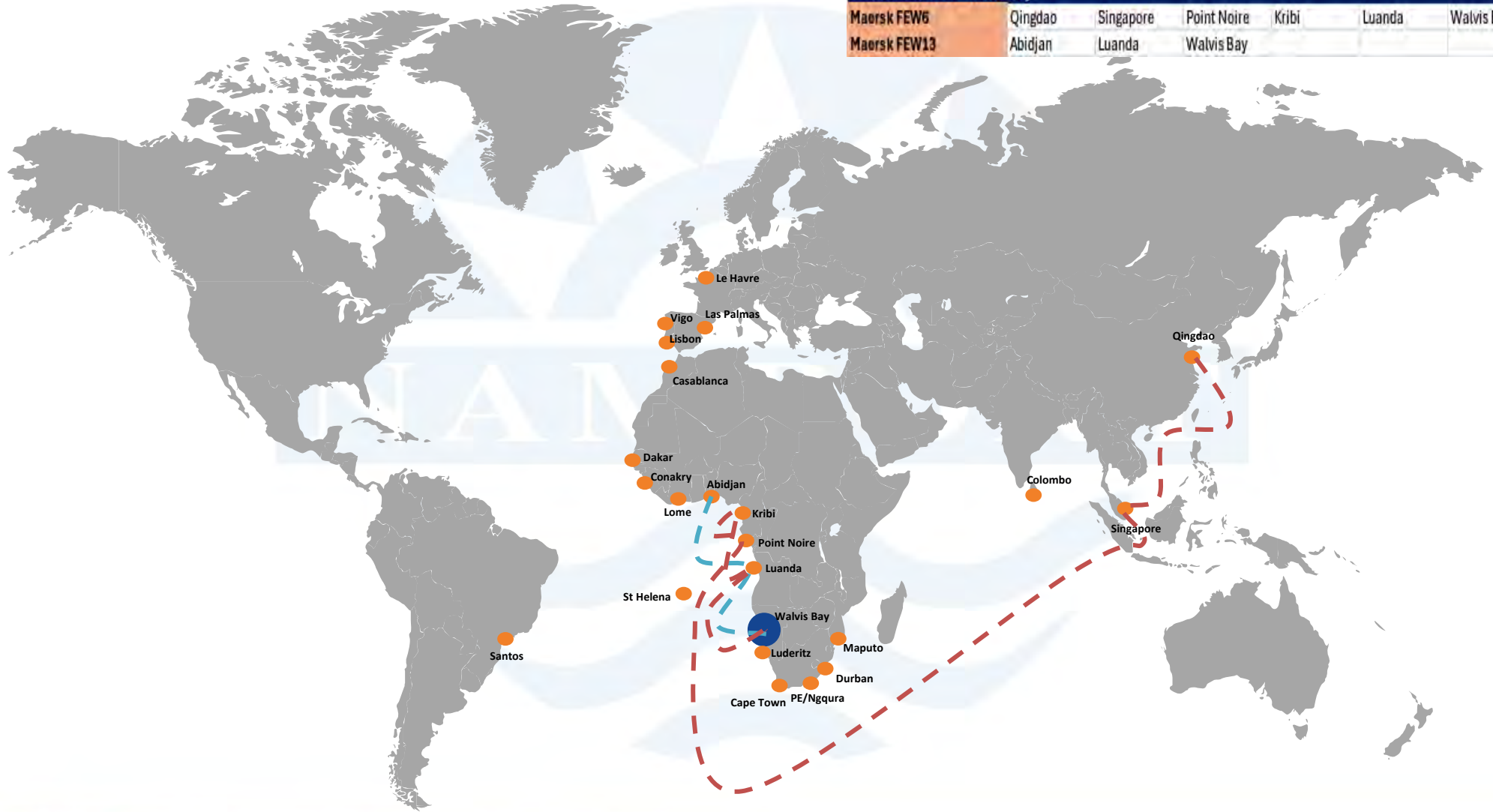




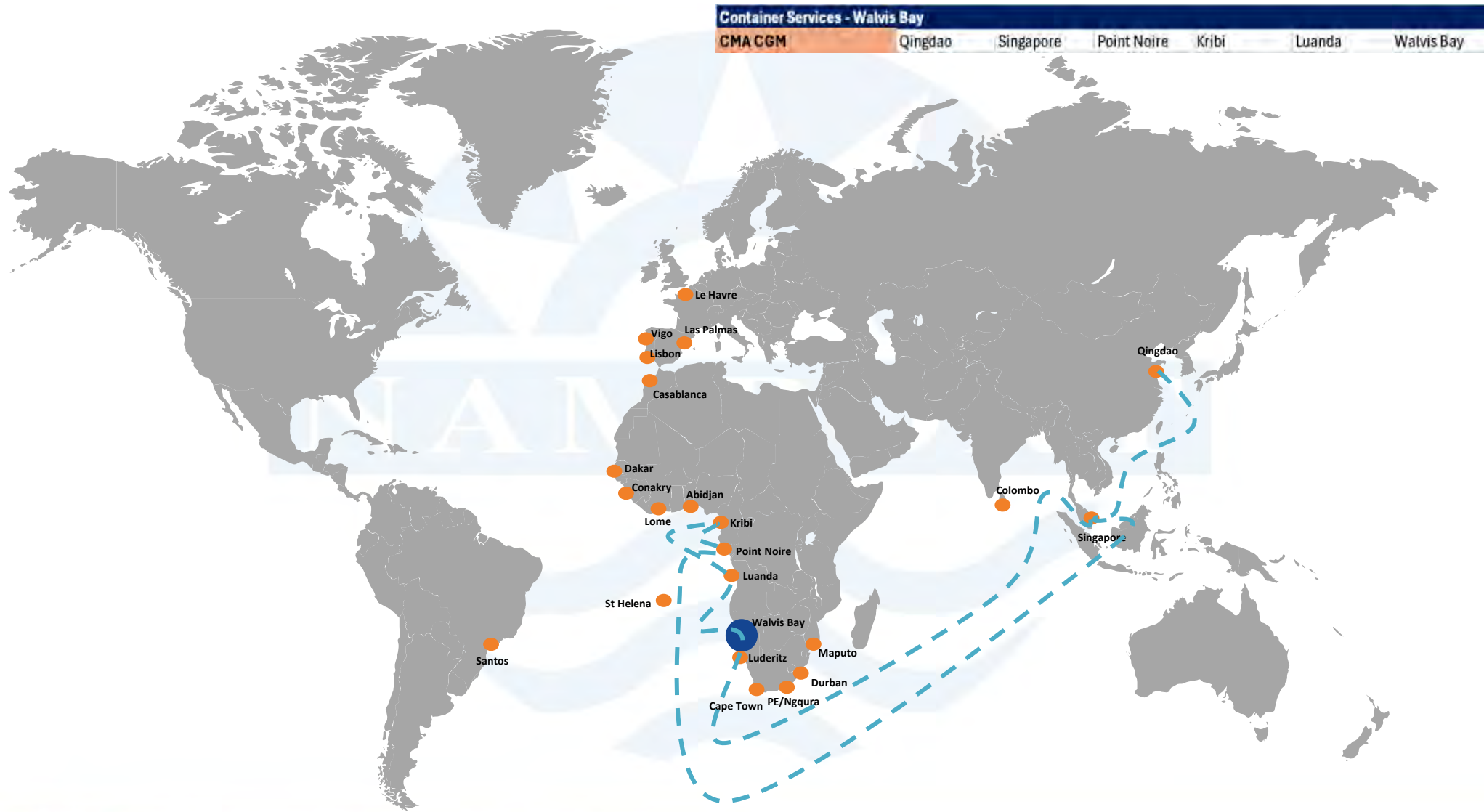
# Shipping Line Routes: Maersk

Container Services - Walvis Bay

Maersk FEW6	Qingdao	Singapore	Point Noire	Kribi	Luanda	Walvis Bay
Maersk FEW13	Abidjan	Luanda	Walvis Bay			

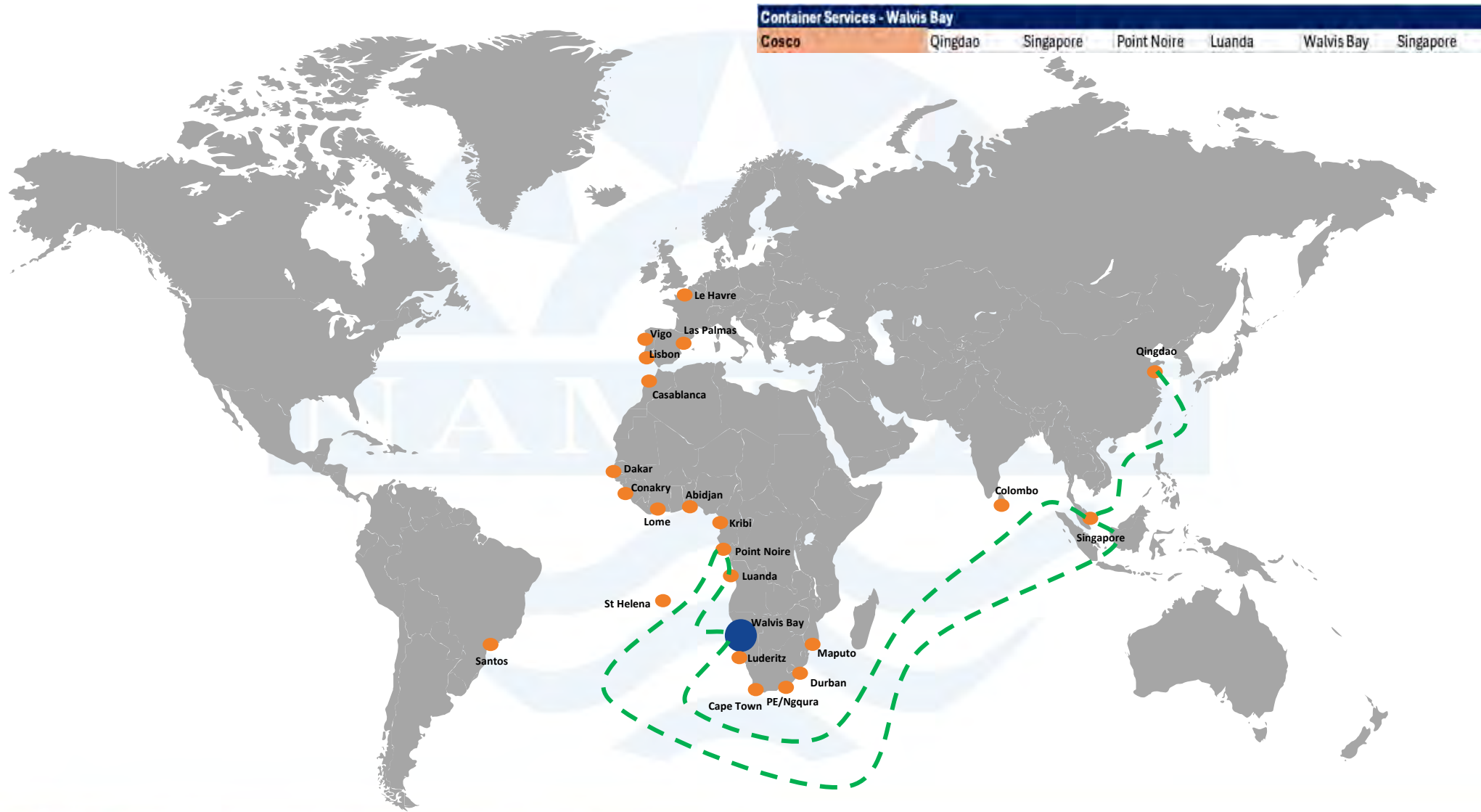


# Shipping Line Routes: CMA CGM

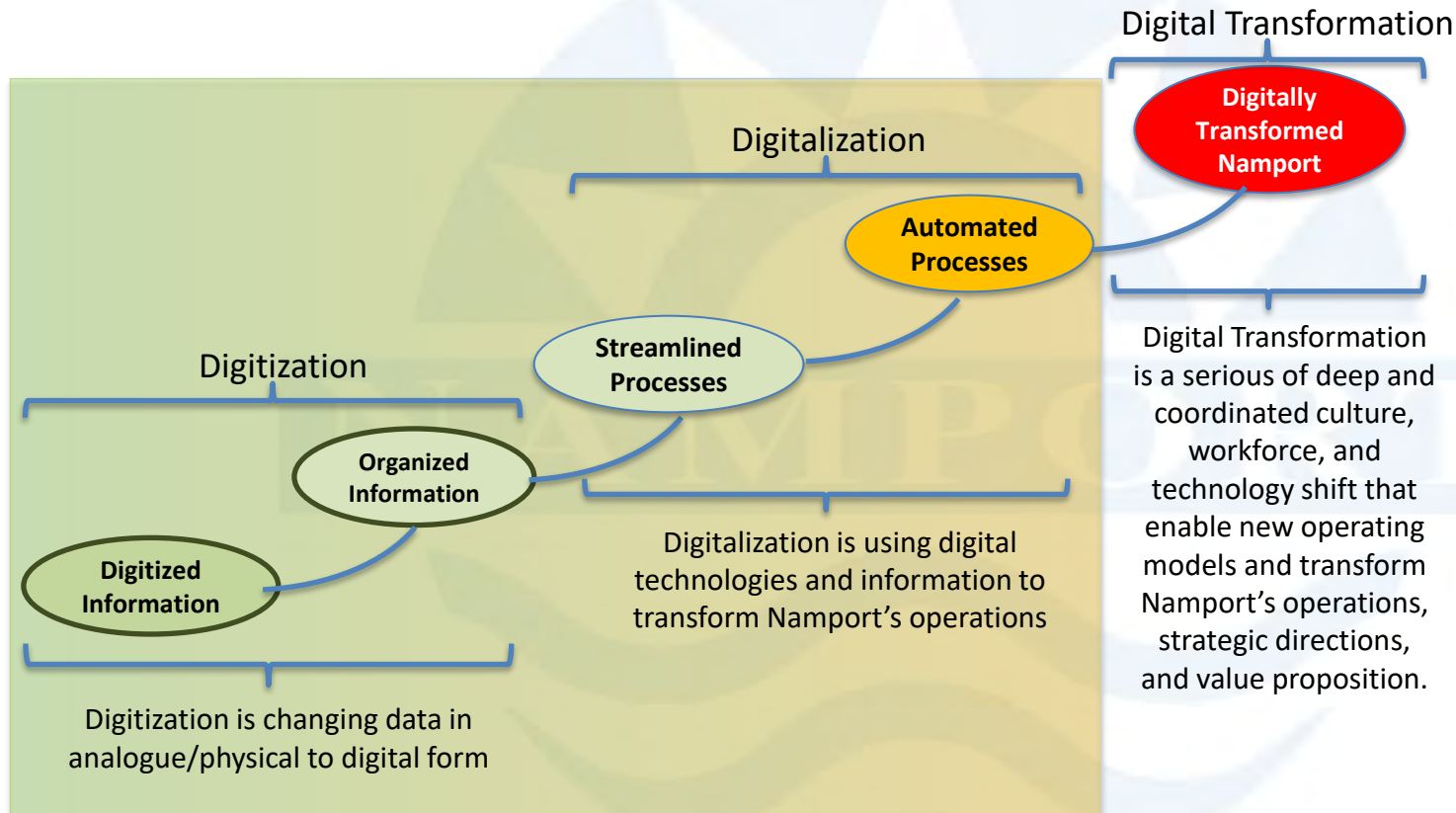




# Shipping Line Routes: Cosco



# SMART PORT JOURNEY



**Smart Port**

A technologically advanced port that uses digitalization, automation, and data-driven solutions to optimize operations, enhance efficiency, improve safety, and minimize environmental impact.



# IMPLEMENTATION ROADMAP

## 2025-2026

- SAP S/4Hana Conversion
- SAP SuccessFactors Ph1
- Vessel Tracking System

## 2026-2027

- Gate Automation & Truck Arrival Booking System
- Private Network 5G
- SAP SuccessFactors Ph2
- Integrated Billing

## 2027-2028

- Maritime Single Window

## 2028-2029

- Port Community System

## 2029-2030

- Cross Border Regulatory System

# OUR PEOPLE & CULTURE

## Enabling Excellence at our Ports through our People

### **Operational Continuity Secured:**

Organisational and engagement, Restructure completed and Mass recruitment ongoing. Manning levels sustained at 85+, ensuring 24/7 operations across ports during high cargo volumes and new terminals transitions.

### **Employee Relations:**

Positive & sound relationship with the trade union through regular consultations and engagement, a positive influence for the entire port community.

### **A Skilled & Ready Workforce:**

3% of total labour cost invested in training and reskilling of employees, ensuring faster turnaround and safer operations.

**Building Future Maritime Talent: 213 trainees, apprentices, and graduates** supported through Namport's Talent Curatorship and bursary programmes, strengthening Namibia's port skills pipeline.

### **Culture Transformation:**

Implementation of Namport's **Culture Transformation Strategy**, embedding the corporate values, positive employee experience, wellbeing, recognition and high accountability resulting in the reduction of disciplinary cases by **80%**, with **zero major safety incidents** linked to human error in FY2024/25.

### **Succession & Leadership Capability:**

Leadership capability development ongoing, strong focus on strategic foresight, change transformation, psychological safety and project management.

***Because a connected, competent, and engaged workforce drives customer value.***





**NAMPORT**  
**SOCIAL INVESTMENT FUND**  
Investing in Communities – Changing Lives

# “78 Million Reasons to Believe in Community, Commitment, and Change”

## **Namport:** Empowering Namibia Beyond the Port Gates

At first glance, Namport's influence is measured by the movement of cargo and ships. But beyond the cranes and containers lies a deeper story, one of a port authority committed not only to economic growth but to shared prosperity and inclusive development across Namibia.





# THANK YOU!



17 Rikumbi Kandanga Rd, Walvis Bay, Namibia | P O Box 361, Walvis Bay, Namibia  
Tel: +264 64 208 2111 | Email: [info@namport.com.na](mailto:info@namport.com.na) | Website: [www.namport.com](http://www.namport.com)