



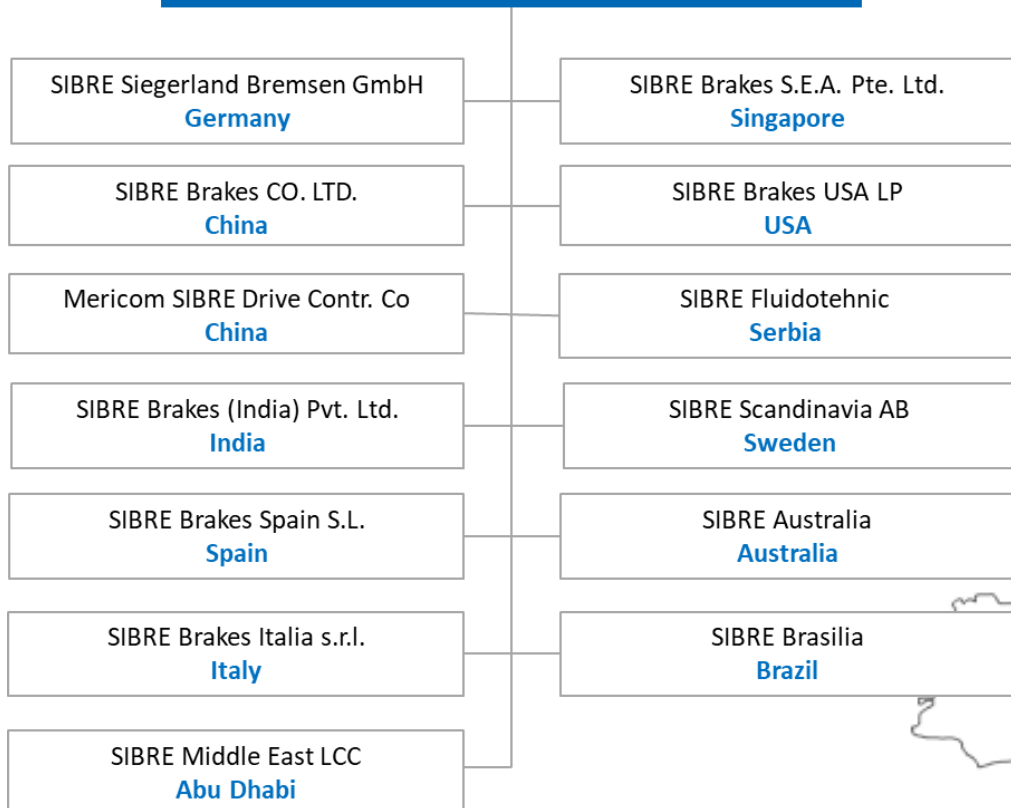
Brake Technology and Monitoring for Increasing Safety and Productivity

Lars Benner, Technical Sales



Siegerland Bremsen

SIBRE Holding GmbH & Co KG

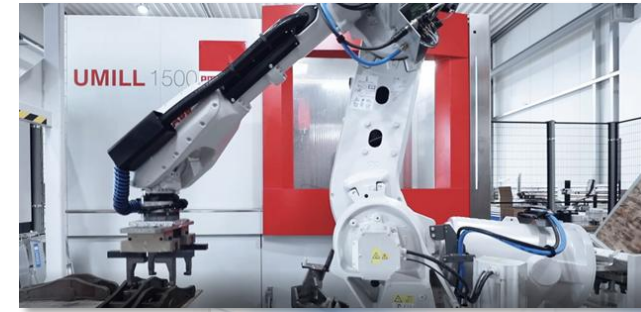




Siegerland Bremsen

SIBRE invest to stay future-proof and reliable

- 3 new halls in total
- 18 new CNC machines + ABB handling robots
- > 17 Mio € investment since 2019
- Highest energy efficiency



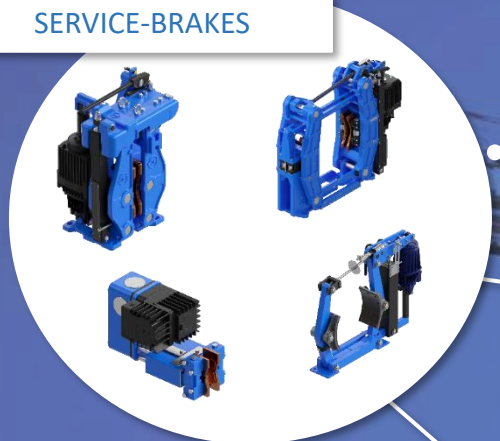
SIBRE invest to stay future-proof and reliable

- **Existing test rig**
 - Renewal of control, measurement and evaluation
- **Dynamic storm brake test rig**
 - Holding forces over 1000 kN
- **New dynamic test rig**
 - Inertia up to 500 kgm²
 - Speed up to 2200 rpm



AS A ONE STOP SUPPLIER, SIBRE
DELIVERES COMPREHENSIVE
SOLUTIONS FOR ALL DRIVES IN CRANES.

SERVICE-BRAKES



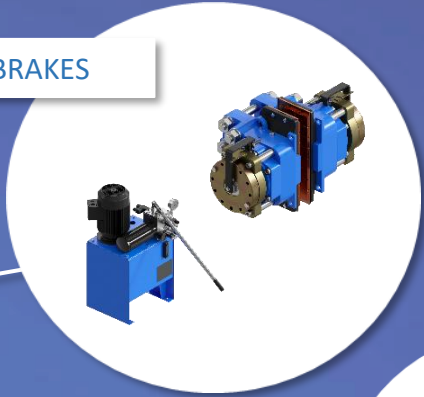
STORM-BRAKES



HYDRAULIC BUFFERS



SAFETY-BRAKES



SNAG LOAD PROTECTION & MONITORING



WHEELS & SHEAVES

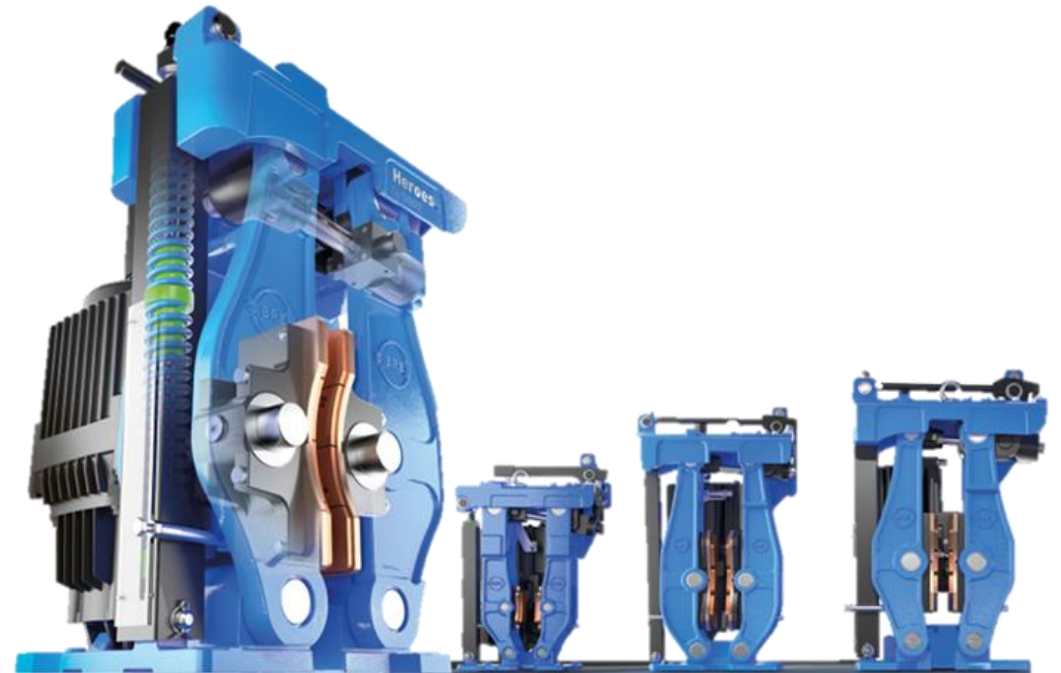


COUPLINGS



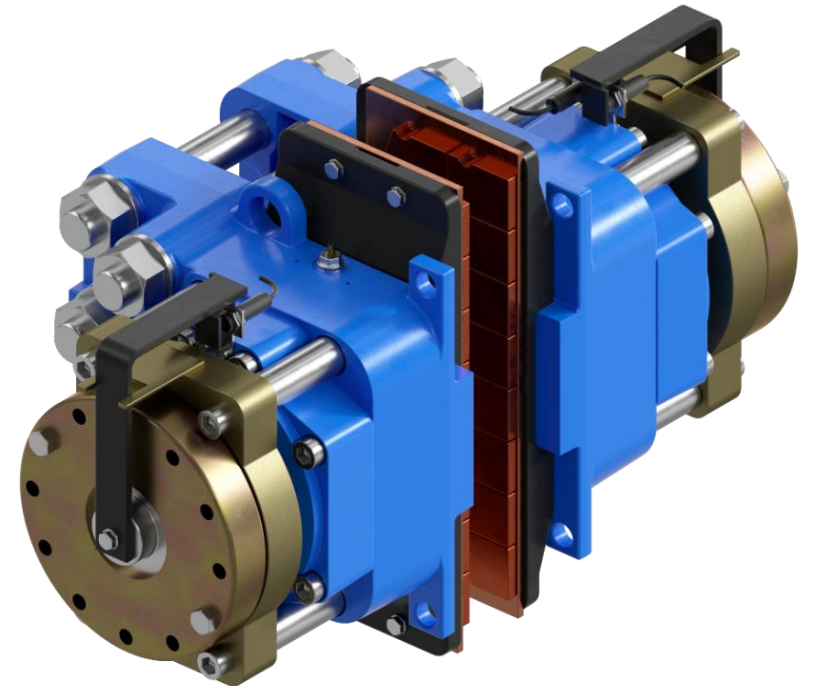
USB5 service brake - key design advantages

- Designed for all applications in a crane
- Identical conditions regarding installation, adjustment and maintenance
- Enhanced corrosion protection
- Parallel opening of brake shoes
- Optimized spring unit
- Upgraded manual release system
- Monitoring of brake status

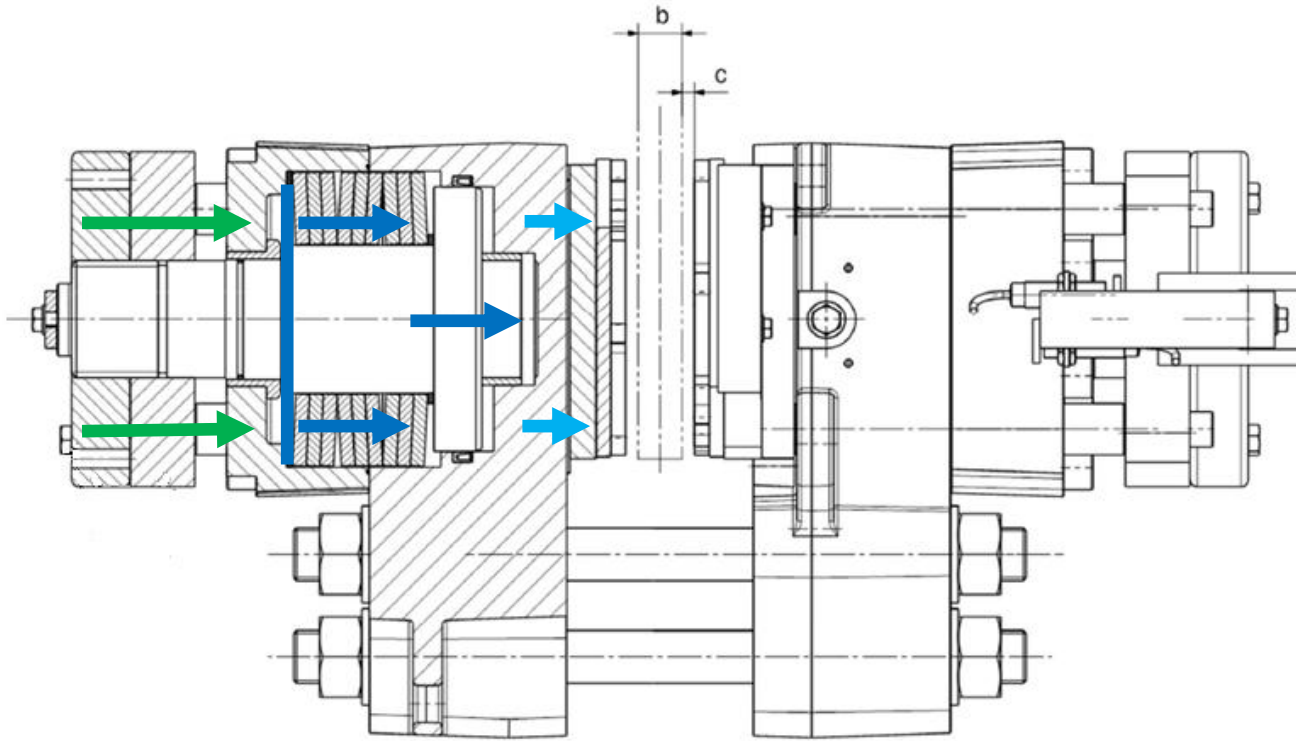


SHI emergency brake

- Standardized functional principle, available in 7 different sizes
- Clamping force range: 17kN - 555kN
- Less leakage-risk
- Less maintenance requirements
- Favorable force-transmission



SHI design benefits



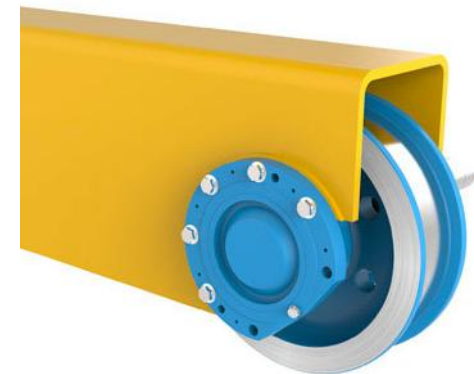
- 1) Extending cup-springs
- 2) Transmission to piston
- 3) Transmission to pressure pins
- 4) Transmission to linings/disc

SIBRE crane wheels & units

- single crane wheels
- complete driven and non-driven wheel sets
- Size 315- 1000 mm

according to:

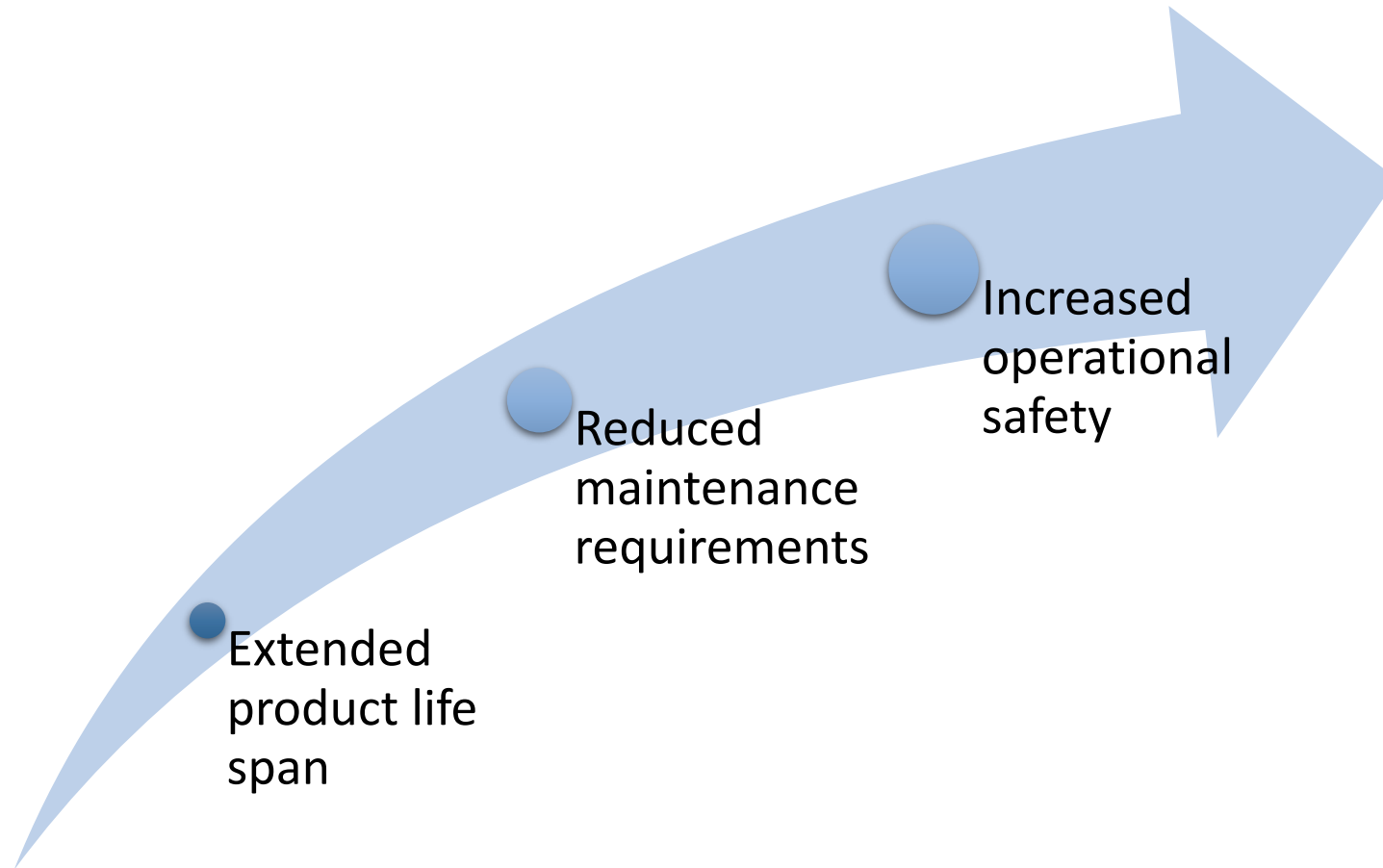
- standards (DIN 15090)
- customer specifications
- SIBRE own design drafts
(approved by customers)



Assembly



Maximize your efficiency by





Sure to be Safe

Siegerland Bremsen

BLACK SEA
Ports and Logistics 2025

A stylized graphic element for the Black Sea Ports and Logistics 2025 logo, featuring a blue and green swoosh that curves upwards and to the right.

Thank you for your attention!

lb@sibre.de | www.sibre.de

