



Dry Port's Role in Seamless Intermodal Transport

WHY ASEAN



WHY ASEAN ?



Located away from conflict zones



Infrastructure growth remains at a high pace



Large and growing consumer market

INTERMODAL TRANSPORT



Intermodal transport involves **moving cargo using two or more modes of transportation—such as rail, road, and sea**—without handling the freight itself when transferring between modes. This ensures **seamless and secure delivery** throughout the supply chain.

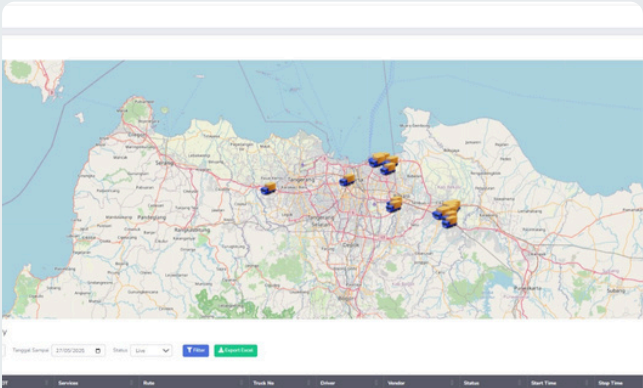


KEY BENEFITS

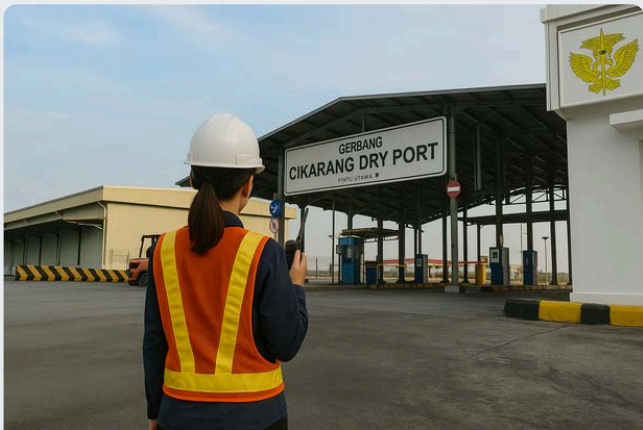
-  **Cost Efficiency**
-  **Reduced Transit Times**
-  **Enhanced Reliability**
-  **Environmental Sustainability**



Integration of Ship, Plane
Rail and Truck Services



Advanced Trucking System

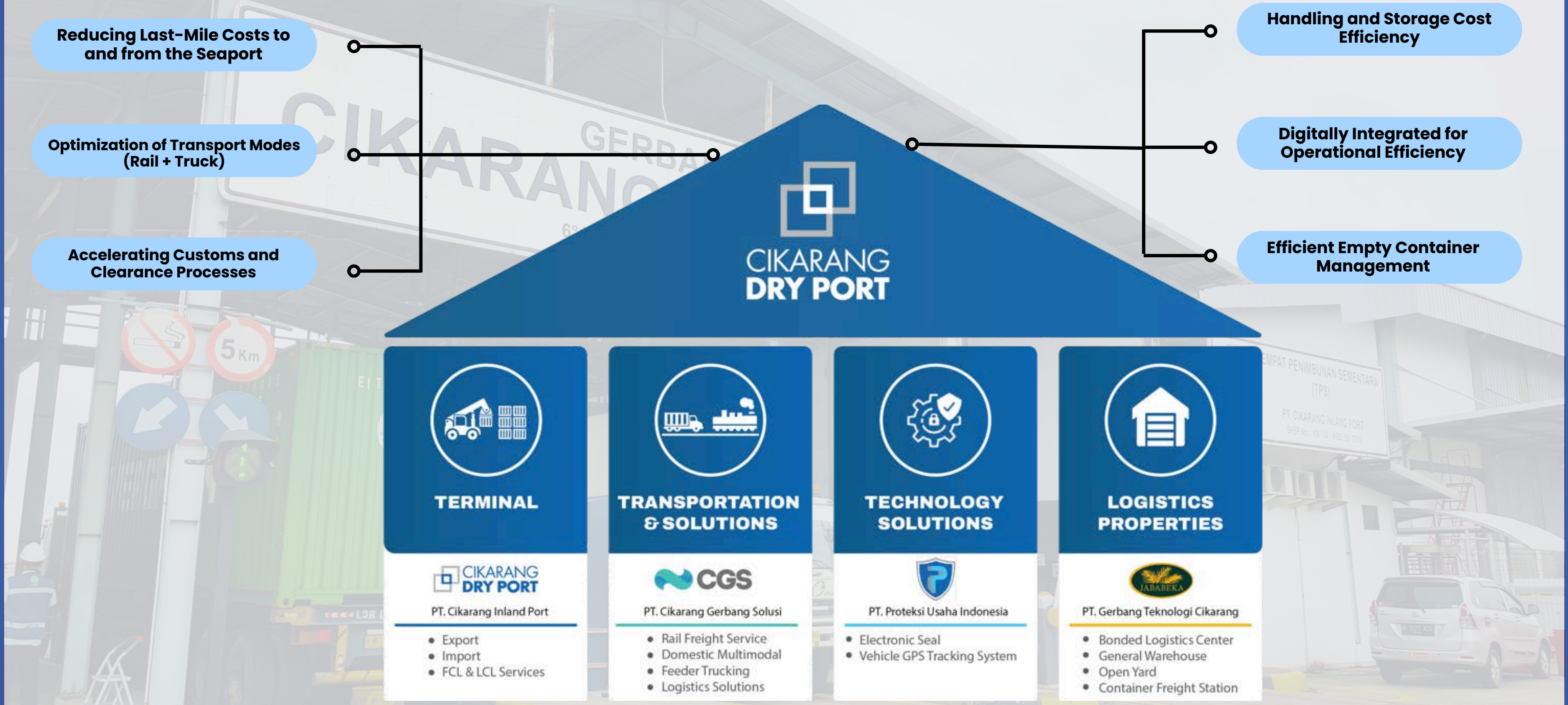


Strategic Terminal
Locations

Reduced
Handling Times

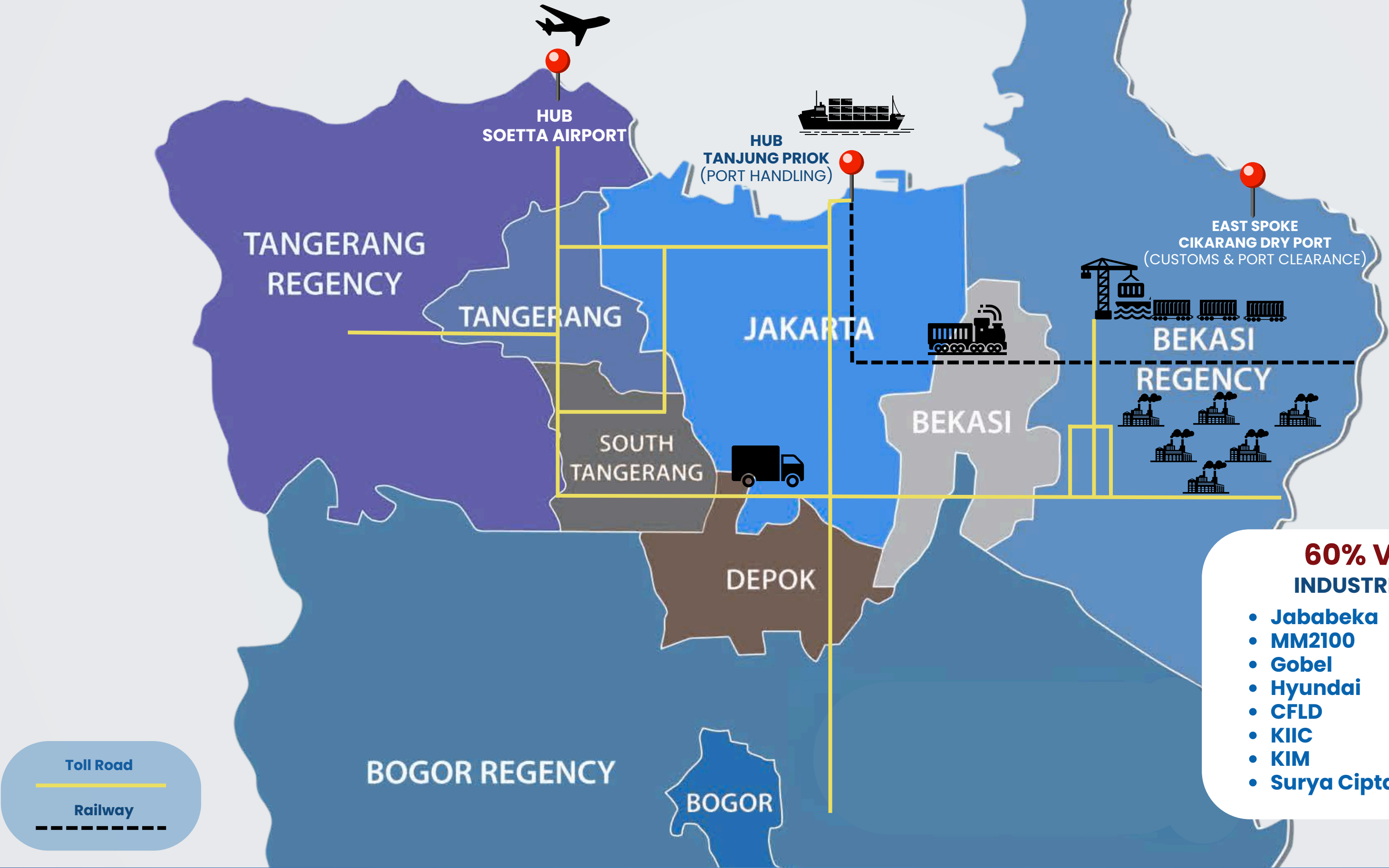
Improved
Service Reliability

CDP BUSINESS AND SERVICES



Cikarang Dry Port provides integrated port and logistics facilities for logistic and supply chain players to gather in one place for better coordination and increasing productivity

HUB & SPOKE IMPLEMENTATION

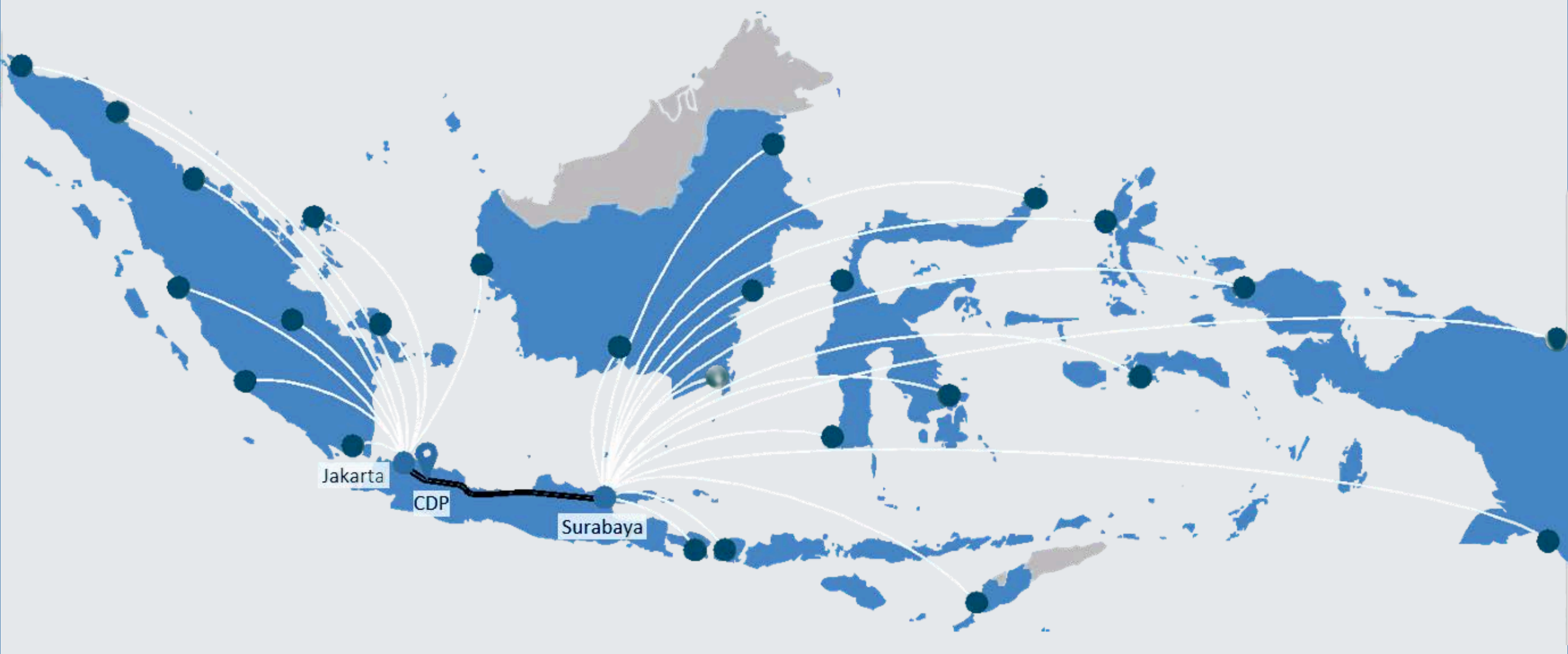


60% VOLUME

INDUSTRIAL ESTATE

- Jababeka
- MM2100
- Gobel
- Hyundai
- CFLD
- KIIC
- KIM
- Surya Cipta
- EJIP
- LIPPO
- GIIC
- KITIC
- KIKC
- KBI
- Indotaisei

DOMESTIC MULTIMODAL



SHIPPER/
CONSIGNEE



FEEDER



CIKARANG
DRY PORT



DOMESTIC



SUB/JKT



MULTIMODAL



SUB/JKT



SERVICES



DESTINATION
PORT

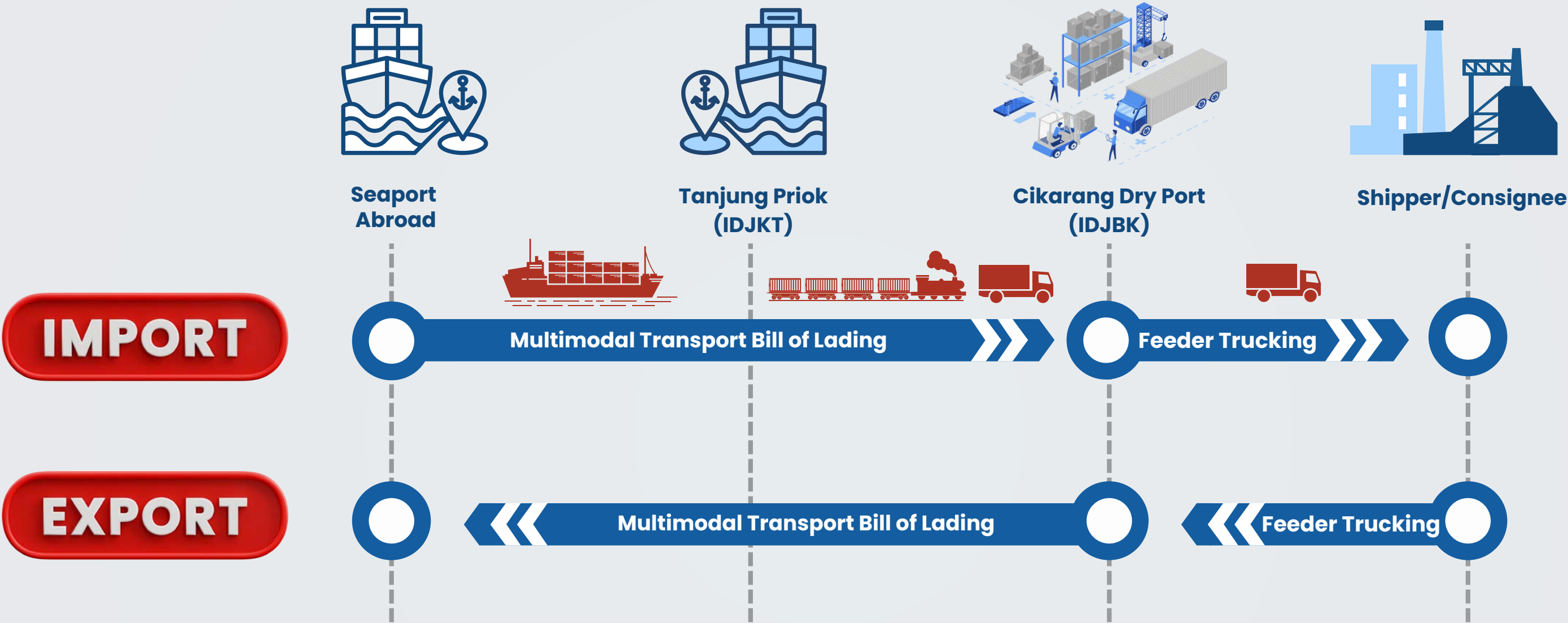


FEEDER



SHIPPER/
CONSIGNEE

EXPORT & IMPORT SCHEME



Services are provided by 19 Shipping Line Companies



INTEGRATED FACILITIES

CIKARANG
DRY PORT



TO JAKARTA
TO SURABAYA

Railway
Emplacement

Container
Yard

Bonded
Logistic Center

Reefer Plug
Station

CDP Auto Gate

Empty Depot

Container
Yard

Container
Freight Station

Physical
Inspection

Mobile X-Ray

- CDP Office
- Quarantine
- Banking
- E-Kiosk

3rd Party
Warehouse

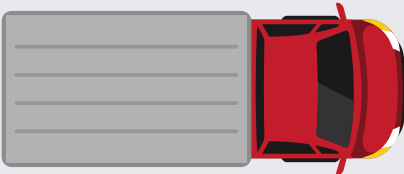
Bonded
Logistic Center

Customs

SMART PORT ECOSYSTEM



CIKARANG DRY PORT

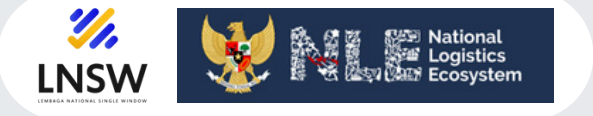


Connected to 20+ Trucker Company

More than 5000 Trucks

Intgerated with API Order Trucking

24 X 7 Realtime and Visible



Services are provided by 21 Shipping Line Companies

CUSTOMER
IMPORTER/EXPORTER

Optimized Supply Chain

Seamless intermodal connectivity enables faster, more predictable deliveries, reducing overall logistics costs.

THANK YOU

SCAN THIS BARCODE:



TO DOWNLOAD THIS PRESENTATION