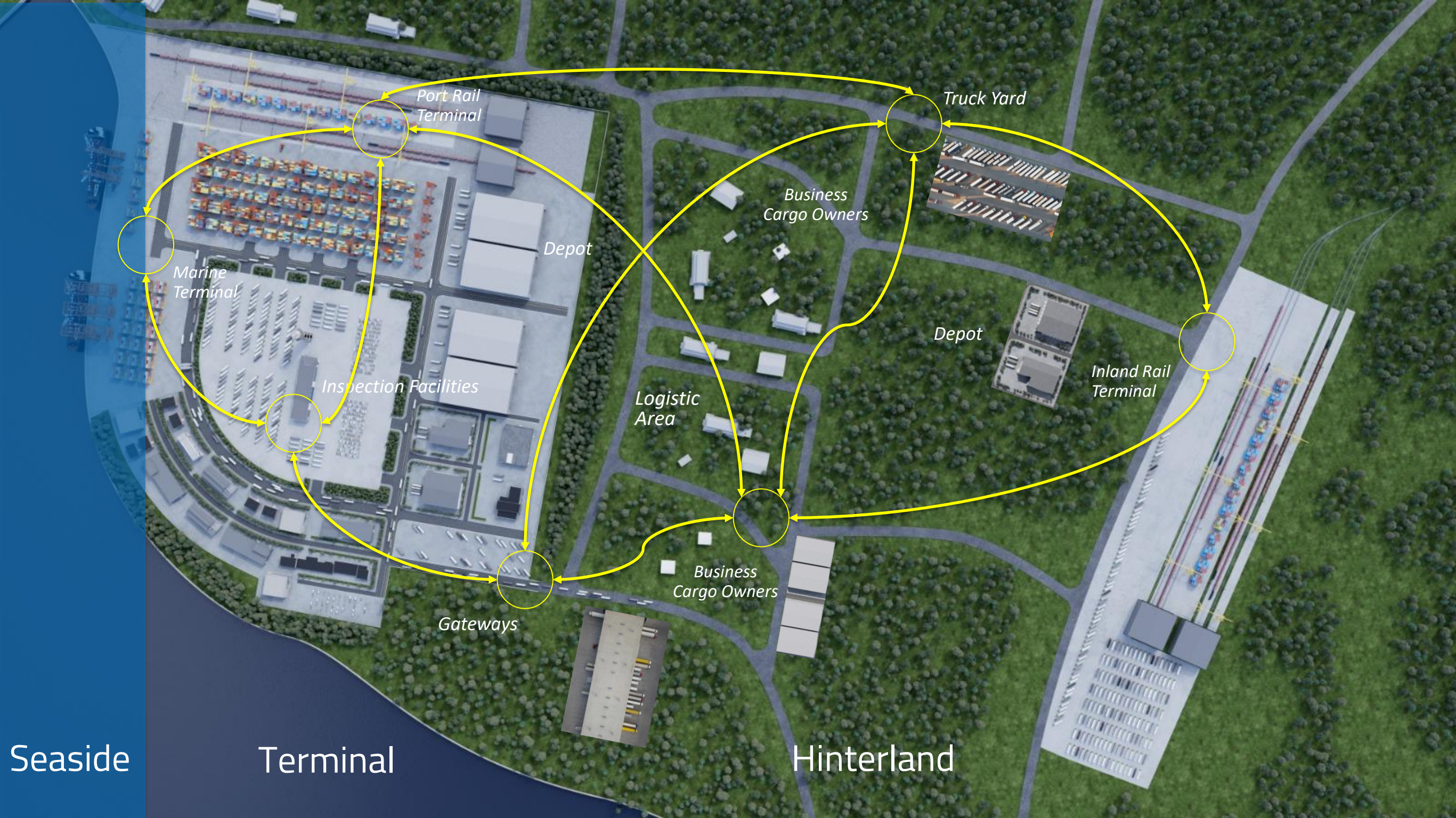


Intelligent Hinterland Connectivity between Ports and Logistics Hubs

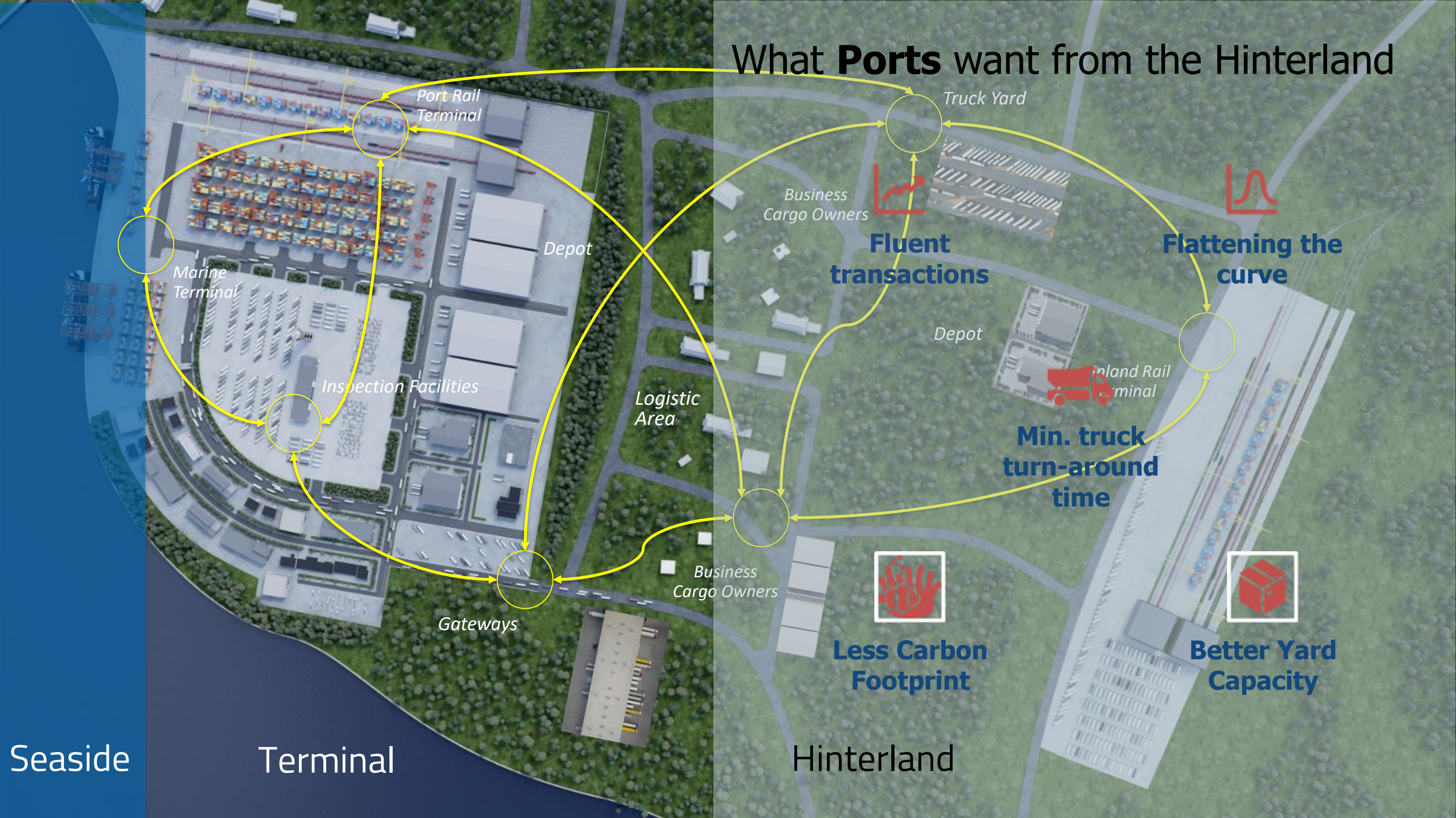


Seaside

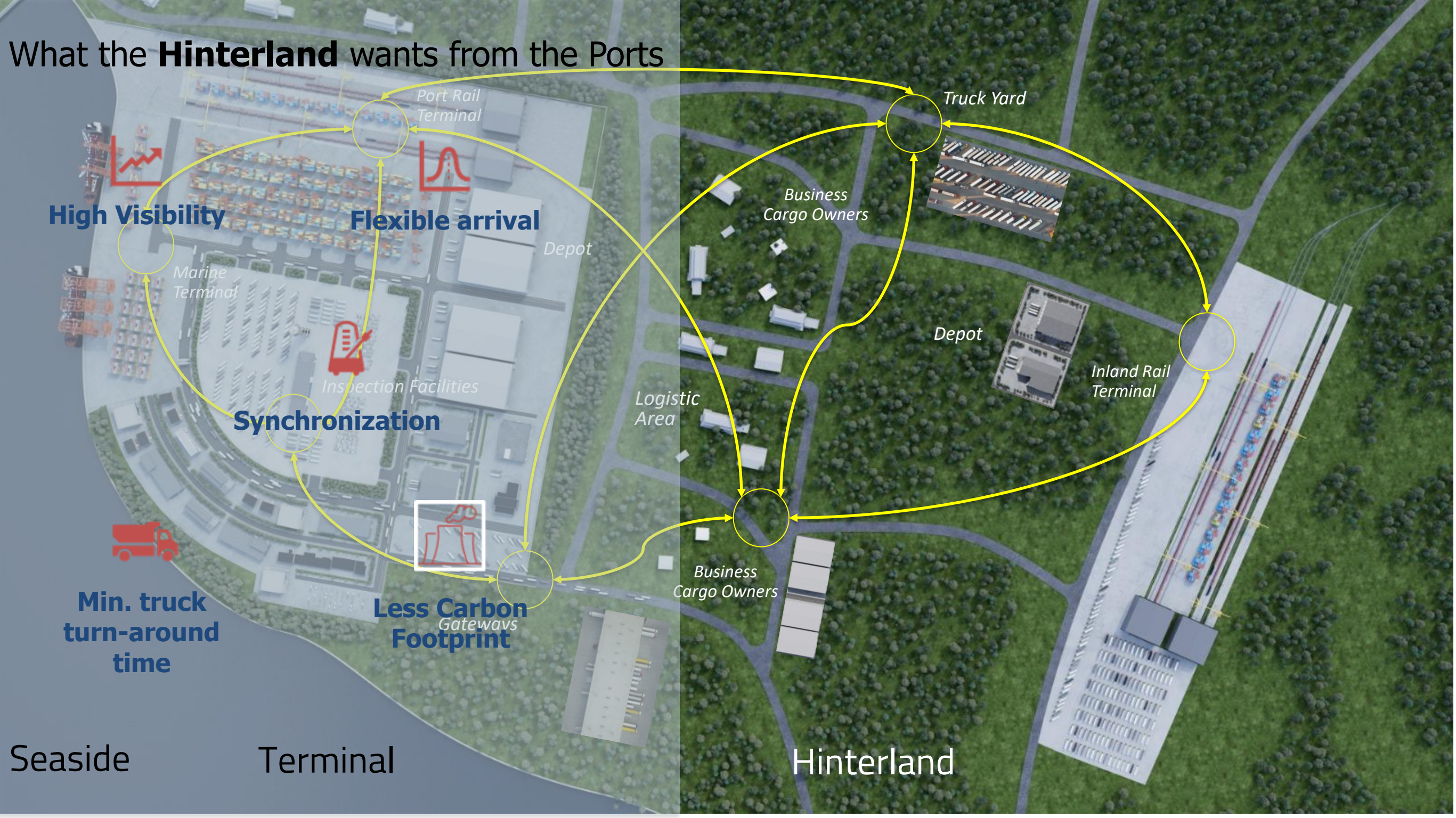
Terminal

Hinterland

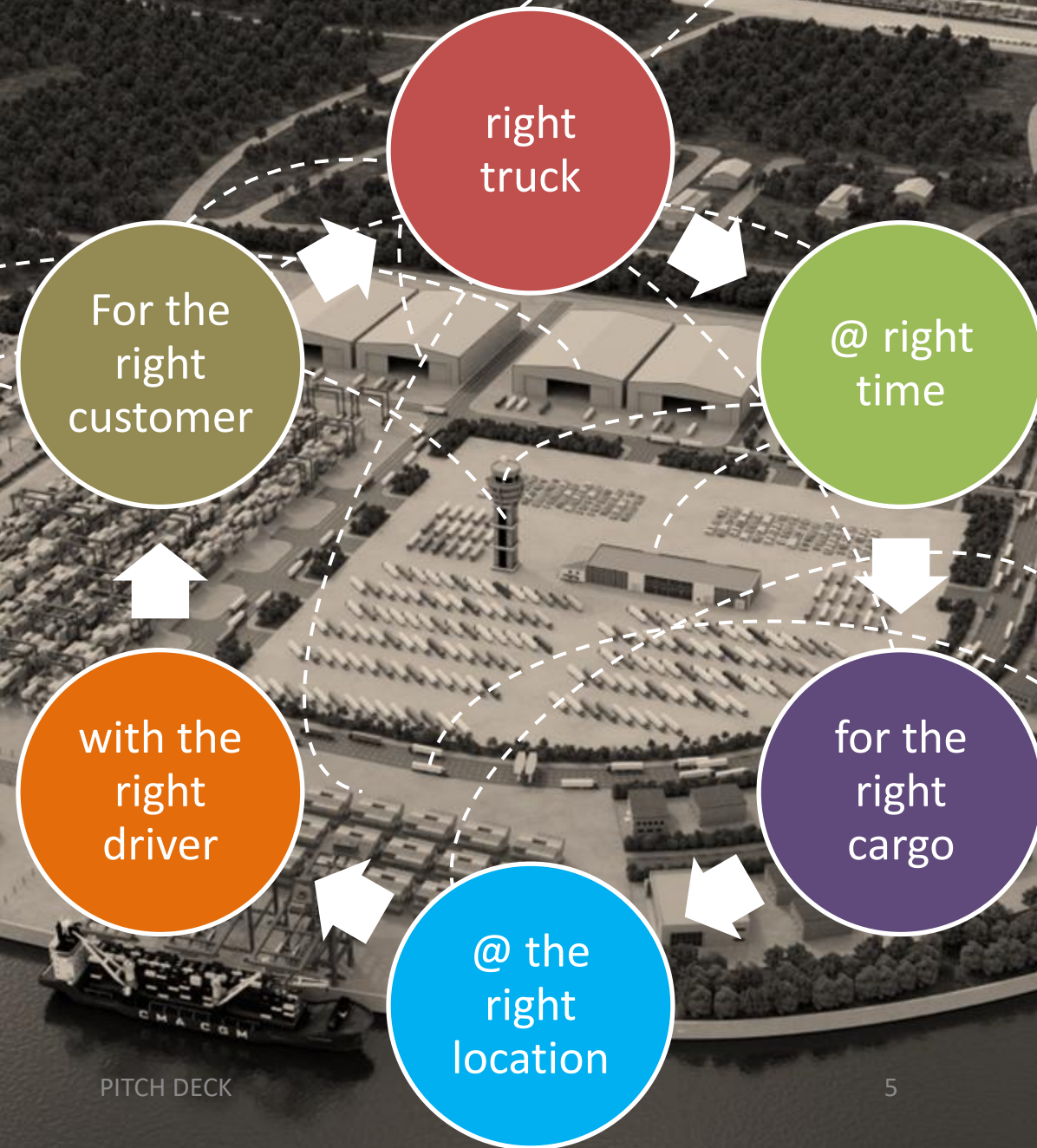
What **Ports** want from the Hinterland



What the **Hinterland** wants from the Ports



Basically what it means.....



NEXUS Hinterland Community System

Integrating public and private digital solutions





FINANCIAL MODELS
FOR YOUR
DIGITAL
TRANSFORMATION

"SYSTEM AS A SERVICE" (SAAS) MODEL



NO UPFRONT PAYMENTS

Huge capital investments.
Uncertainty
Long term investment

TOTAL COST OF OWNERSHIP

Free up cash flow to spend
on other
projects/investments

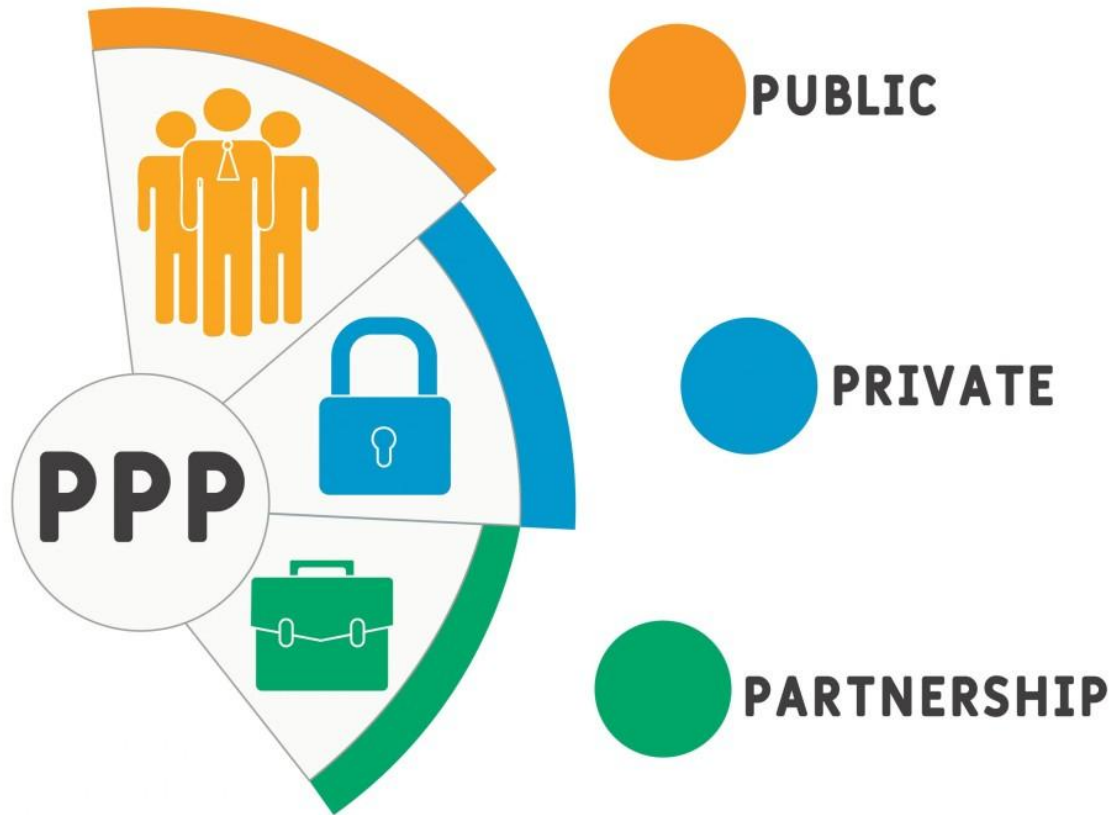
LOWER YOUR RISK

Manage your financial risk in a
better way by spreading costs
over time

ECONOMIC CHALLENGES

iHaaS will help you to
minimize economic risks

"PUBLIC PRIVATE PARTNERSHIP" (PPP) MODEL



POWERFUL MECHANISM

For authorities to catalyze
infrastructure growth

Stimulate economic
development

Improve the quality of life
for citizens

NAFITH INTERNATIONAL PARTNER WITH SCZONE TO REVOLUTIONIZE HINTERLAND CONNECTIVITY AT WEST PORT SAID



Source: General Authority for the Suez Canal Economic Zone.

Benefits of the NEXUS platform

Connectivity between Ports and Logistics Hubs



investing in “the right” infrastructure

implementing “the right” technology solutions

improving communication and coordination

collaborative effort among all the supply chain partners

ensure a smoother flow of cargo in and out of ports



PLEASE MEET US IN THE EXHIBITION AREA FOR MORE DETAILS