



Terex Fuchs Professional Solutions for Port Handling

Andrei Kelim, Regional sales manager, Terex Deutschland GmbH

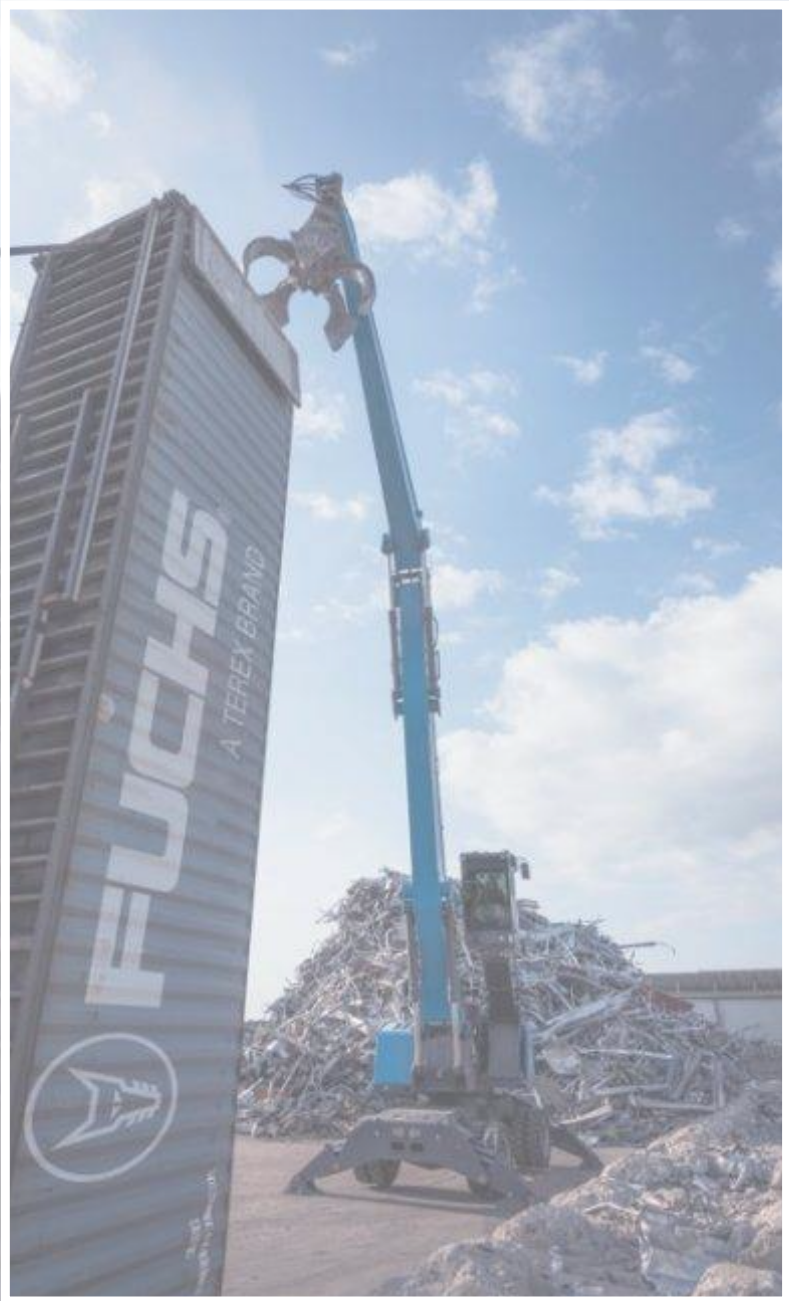
29th of September 2022



FUCHS
A TEREX BRAND

Agenda

- Fuchs a TEREX brand
- Dealer Network in the Region
- Fuchs Value Added Services
- Testimonials
- Outlook



Agenda

- Fuchs a TEREX brand
- Dealer Network in the Region
- Fuchs Value Added Services
- Testimonials
- Outlook



TEREX Corporation

Business units and brands



TEREX Corporation

Business units and brands




Fuchs a TEREX brand


Gobal Footprint


Bad Schönborn, Baden- Württemberg
Germany


   **HQ**



 Production for global market & HQ

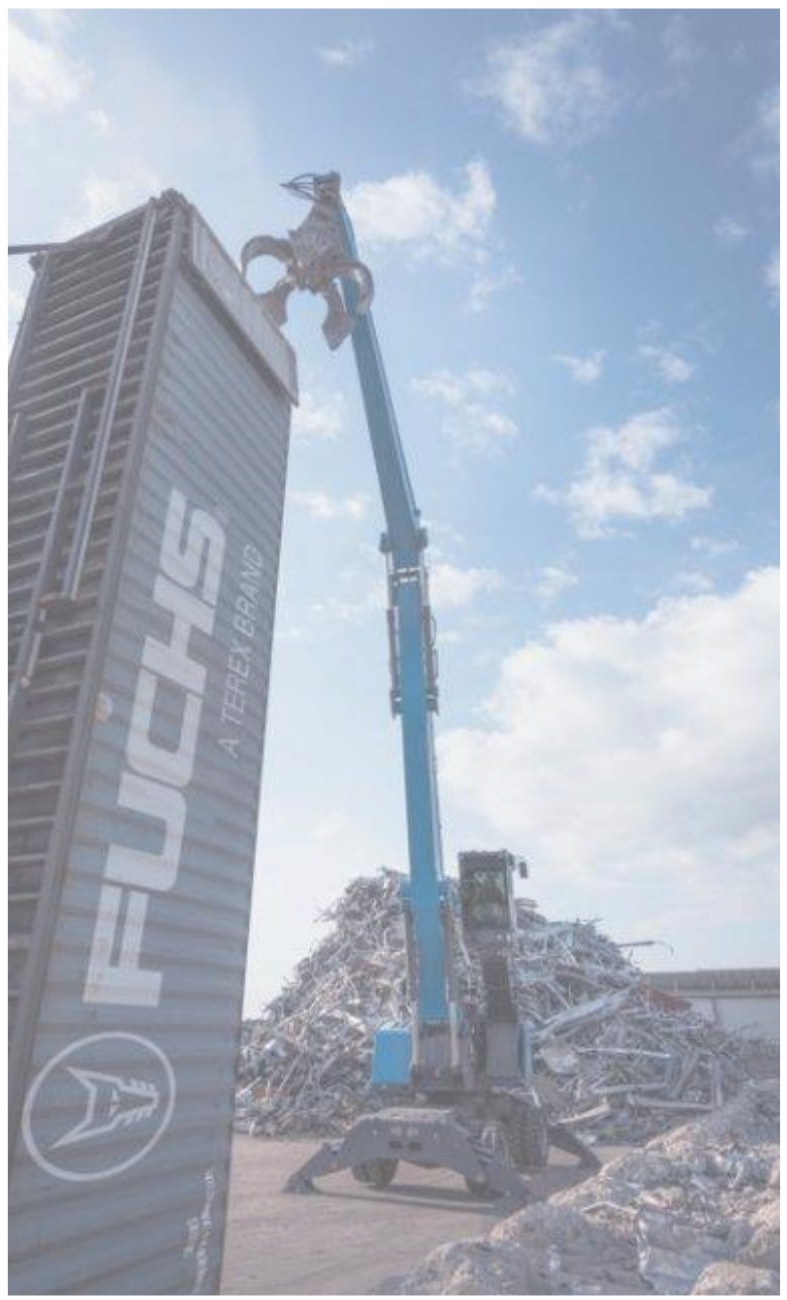
 Production for domestic market

 Service Hub

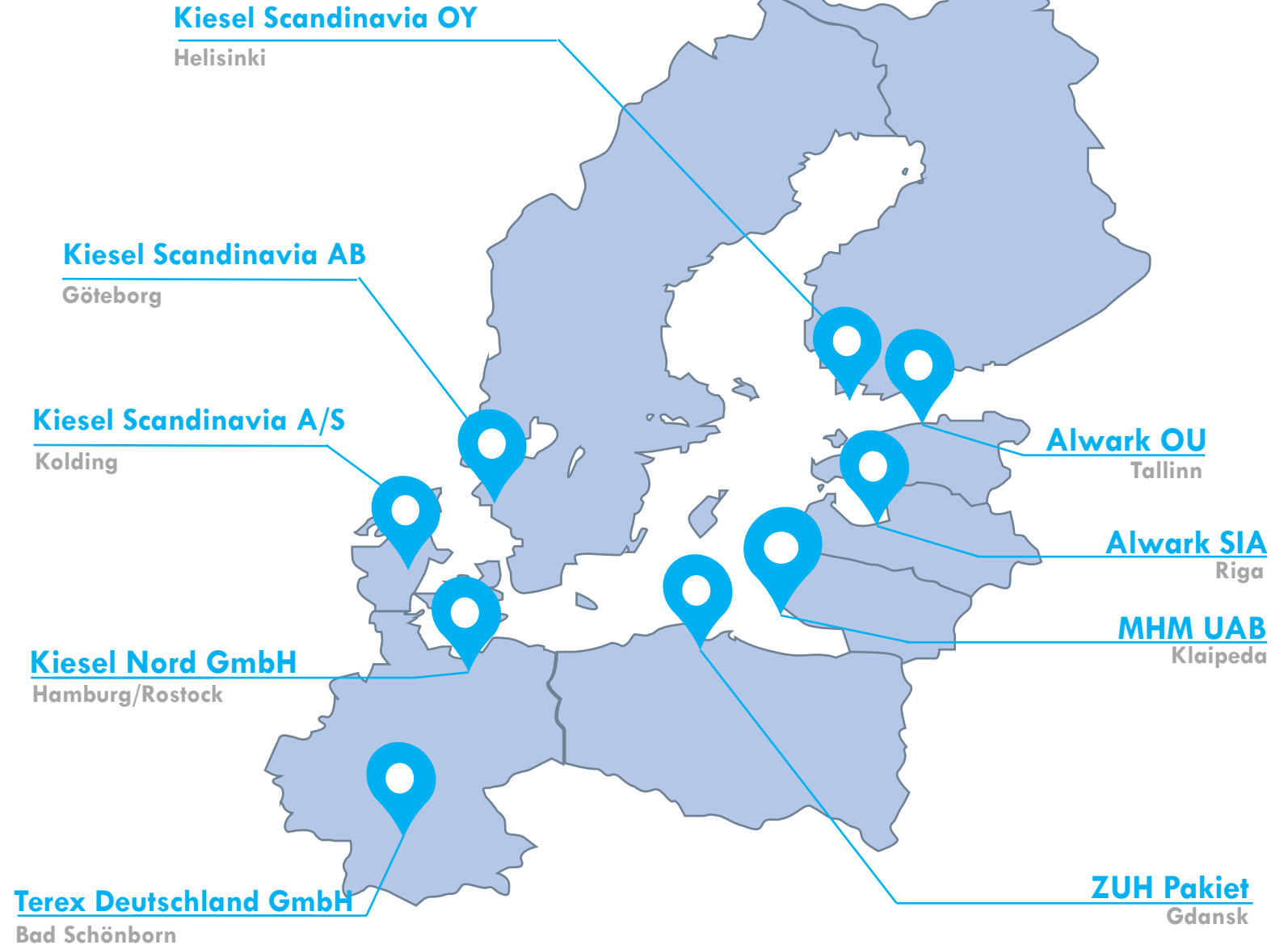
 Sales Office

Agenda

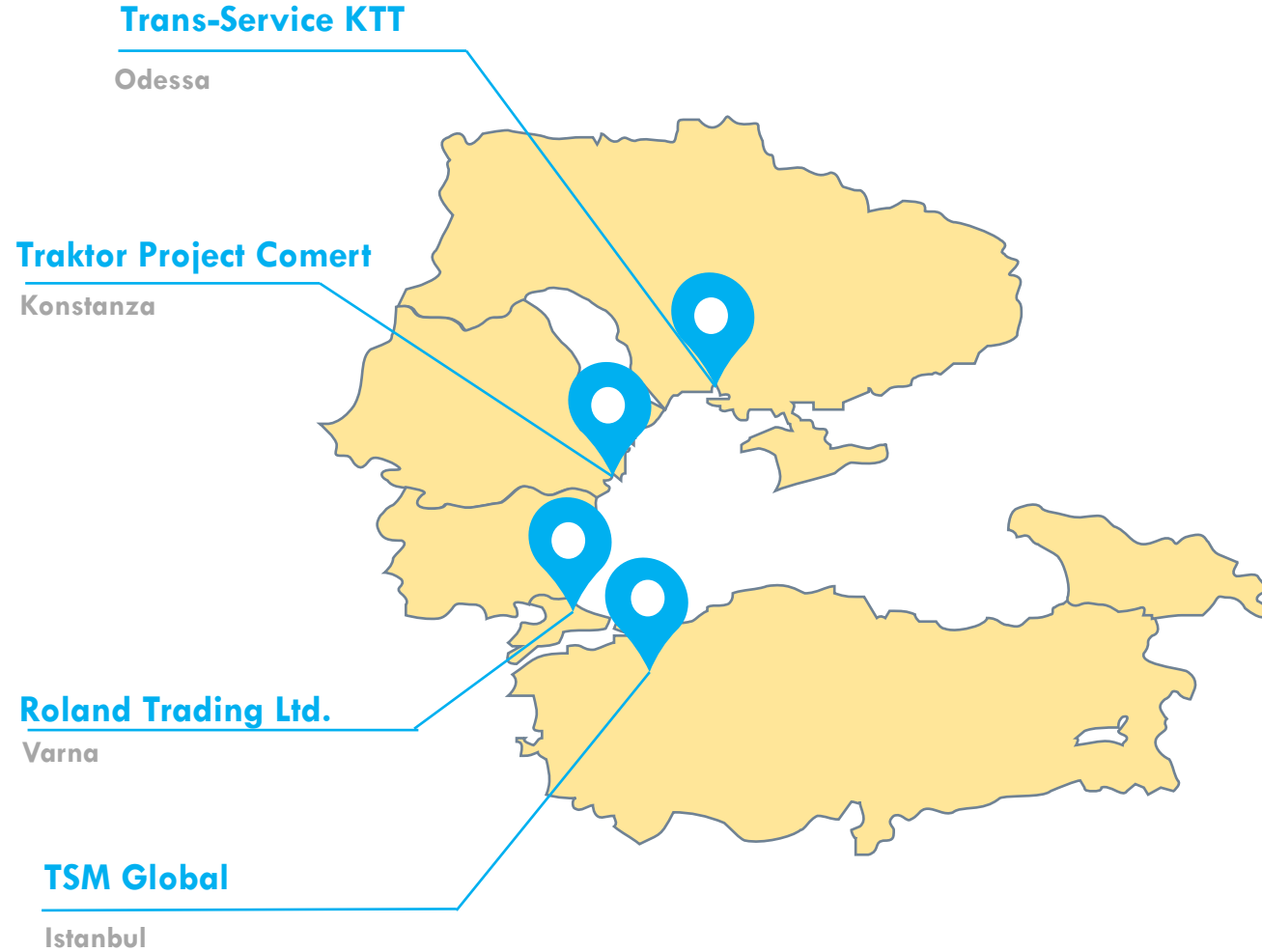
- Fuchs a TEREX brand
- **Dealer Network in the Region**
- Fuchs Value Added Services
- Testimonials
- Outlook



Fuchs operations in Scandinavia & Baltics

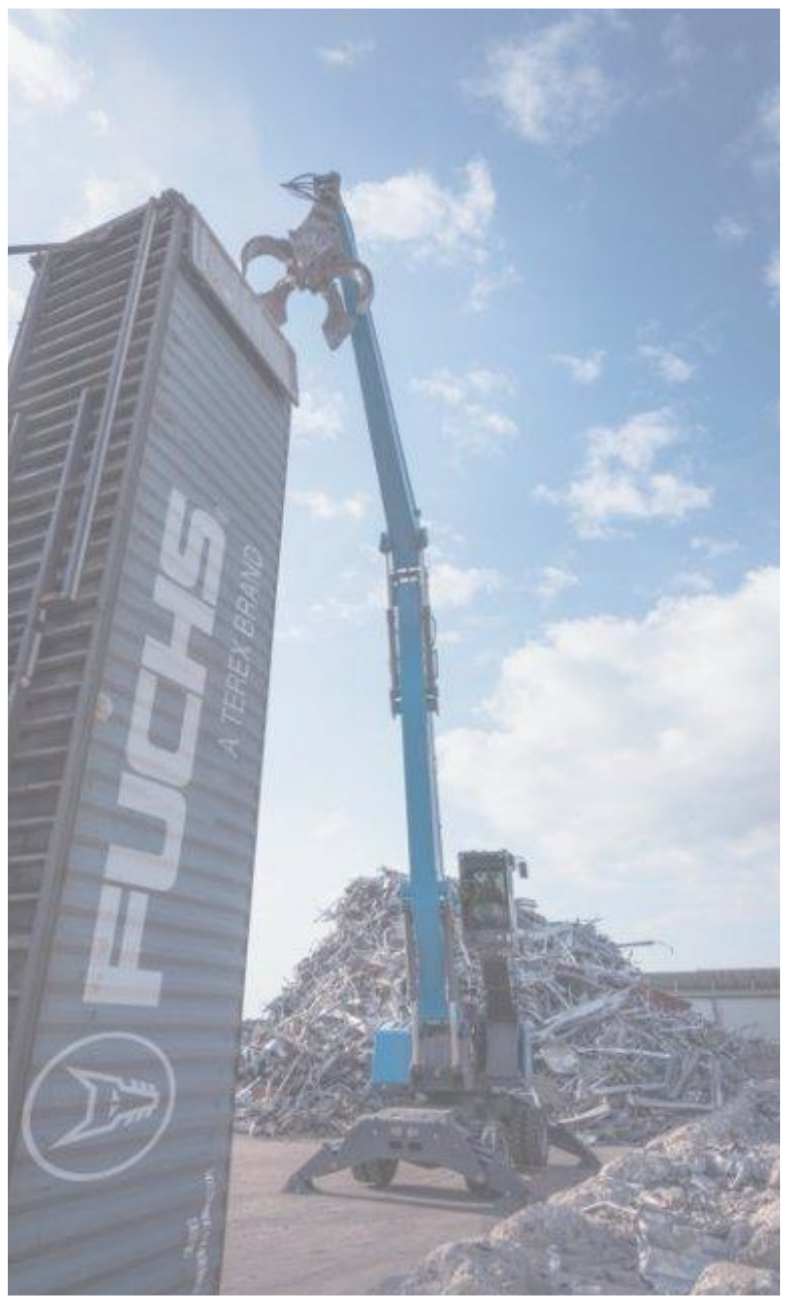


Fuchs operations in the Black Sea Region



Agenda

- Fuchs a TEREX brand
- Dealer Network in the Region
- **Fuchs Value Added Services**
- Testimonials
- Outlook





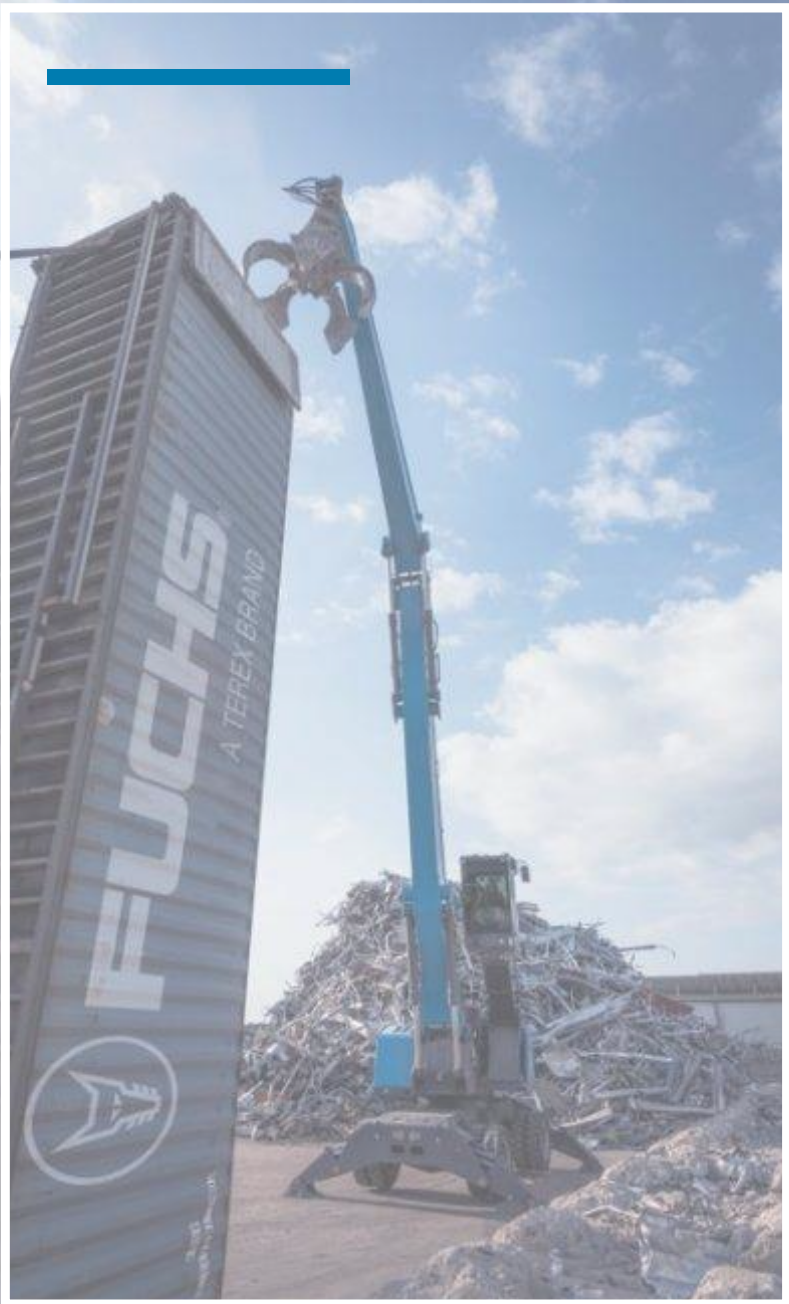
Product Portfolio – MHL

									
	MHL 310	MHL 320	MHL 331	MHL 335	MHL 340	MHL 345	MHL 350	MHL 355	MHL 360
	85 kW	95 kW	115 kW	115 kW	129 kW	129 kW	160 kW	160 kW	190 kW
	■	EDG	EDG	EDG	128 kW	128 kW	148 kW	148 kW	186 kW
	75 kW	75 kW	90 kW	90 kW	110 kW	110 kW	132 kW	132 kW	160 kW
	17,1 t	21,0 t	24,2 t	25,5 t	30,6 t	31,2 t	35,5 t	40,9 t	48,8 t
	9,0 m	10,4 m	12,0 m	12,0 m	13,7 m	13,7 m	16,0 m	16,0 m	18,0 m

								
	MHL 365	MHL 370	MHL 375	MHL 375 HD	MHL 380	MHL 390	MHL 360 PFLER (0,8 m)	MHL 365 PFLER (1,4 m)
	190 kW	230 kW	245 kW	245 kW	273 kW	300 kW	190 kW	190 kW
	186 kW	■	■	■	273 kW	273 kW	186 kW	186 kW
	160 kW	200 kW	200 kW	200 kW	250 kW	250 kW	160 kW	160 kW
	51,8 t	52,0 t	65,0 t	71,0 t	70,0 t	87,0 t	50,1 t	55,5 t
	18,0 m	18,0 m	20,0 m	22,0 m	22,0 m	24,5 m	18,0 m	18,0 m













All Models are also available with Electric drive



Product Portfolio – RHL (Track)

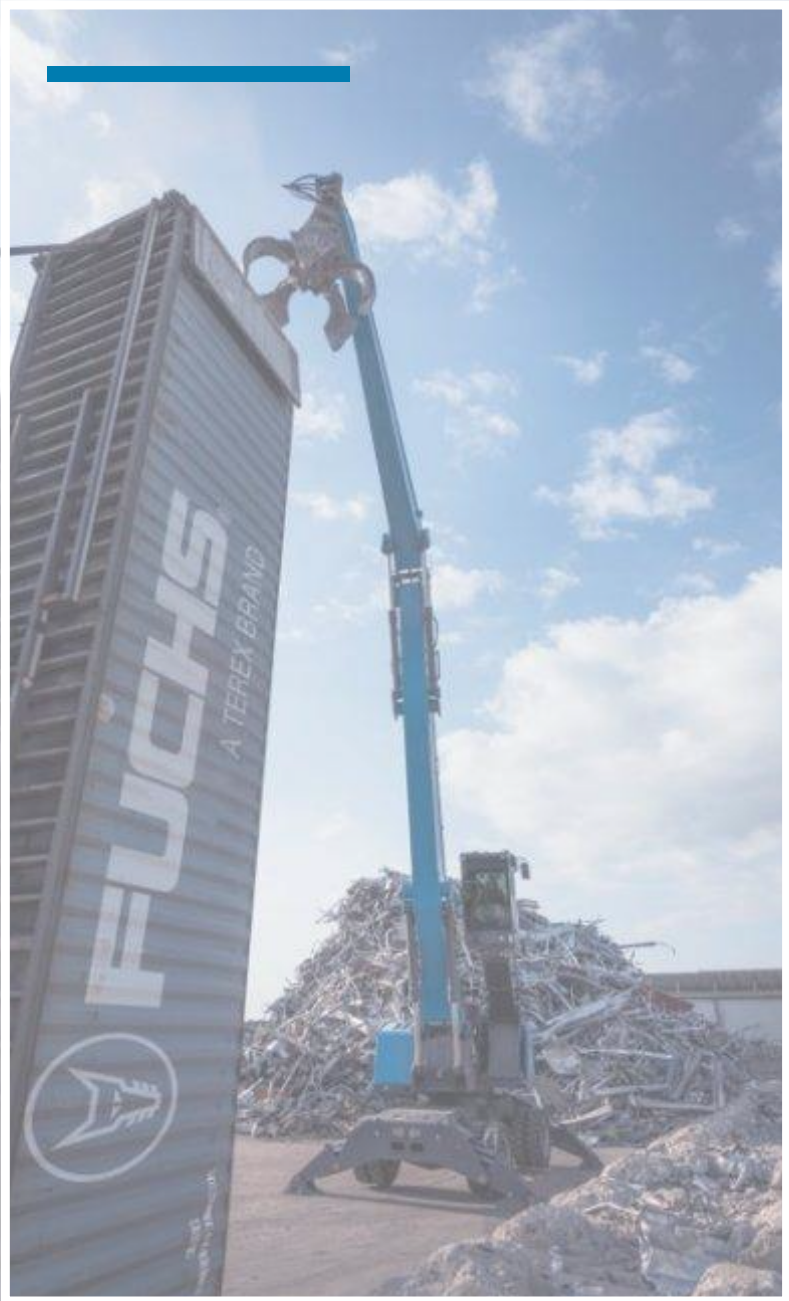
					
	RHL 320	RHL 331	RHL 340	RHL 350	RHL 360
	95 kW	115 kW	129 kW	160 kW	190 kW
	EDG	EDG	128 kW	148 kW	186 kW
	75 kW	90 kW	110 kW	132 kW	160 kW
	28,5 t	29,0 t	38,0 t	43,0 t	54,0 t
	10,4 m	12,0 m	13,7 m	16,0 m	18,0 m

					
	RHL 370	RHL 375	RHL 390	RHL 390 XL	RHL 390 GANTRY
	230 kW	245 kW	300 kW	300 kW	300 kW
	■	■	273 kW	273 kW	273 kW
	200 kW	200 kW	250 kW	250 kW	250 kW
	55,0 t	75,0 t	85,0 t	88,4 t	110,0 t
	18,0 m	22,0 m	24,5 m	24,5 m	24,5 m



All Models are also available with Electric drive

Application



✓ WASTE

Application



> SCRAP

Application



> PORT

Fuchs Connect Portal

Advantages:

- ✓ New Layout incl. Dashboard (Widgets)
- ✓ New functions - maintenance and Assignments
- ✓ Improved Reporting
- ✓ Open for new features



Fuchs Connect Portal



MG My Account

- Dashboard
- Machines
- Maintenance
- Events
- Assignments
- Reports
- Administration
- Links
- Instructions

Machines

MACHINES / MHL360F / MHL360F #5738

Dashboard configuration

Machine Dashboard

EDIT

MANAGE

REFRESH



● REALTIME SINCE 30.08.2022 08:08

MHL360F #5738

DETAILS

LOCATION

Machine info

Organization: ... [C] TSR Lünen [OU]
Model: MHL360F
Serial number: 5738

20 °C

MACHINE MAP



MACHINE DATA		EVENTS	DTC'S	CONSUMPTION REPORT	USAGE REPORT	SIGNALS
IGNITION HOURS		WORKING HOURS		MACHINE STATUS		SOFTWAREUPDATE STATUS
3517 h		3330 h		MACHINE WORKING		
HYDRAULIC WORKING HOURS		DRIVING HOURS		FILLING LEVELS		
2078 h		172 h		diesel filling level		
				49 %		
				DEF level		
				92 %		

Lab mode is currently active
pro 11.1.647



Fuchs Connect Portal



Search



My Account



- Dashboard
- Machines
- Maintenance
- Events
- Assignments
- Reports
- Administration
- Links
- Instructions

Machines

MACHINES / MHL360F / MHL360F #5738



Organization: ...

Model: MHL360F

Serial number: 5738



20 °C



MACHINE DATA

EVENTS

DTC'S

CONSUMPTION REPORT

USAGE REPORT

SIGNALS

WORK ECO MODE CONSUMPTION

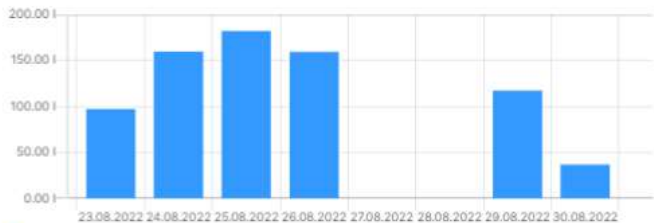
LAST 1 WEEK DELTA



Delta: Load fuel consumption ECO-Mode

WORK POWER MODE CONSUMPTION

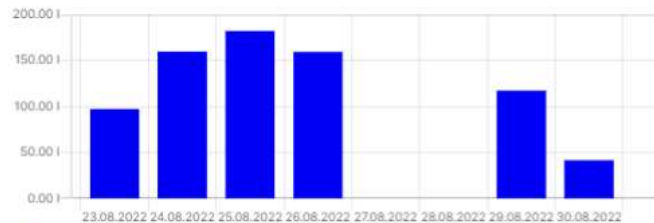
LAST 1 WEEK DELTA



Delta: Load fuel consumption Power-Mode

WORK FUEL CONSUMPTION

LAST 1 WEEK DELTA



Delta: Load fuel consumption

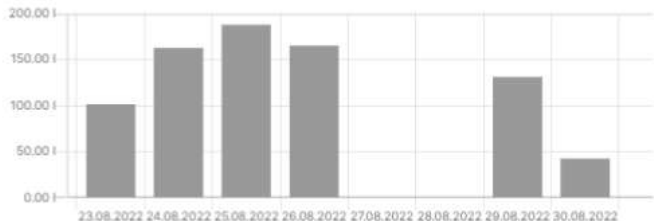
IDLE FUEL CONSUMPTION

LAST 1 WEEK DELTA



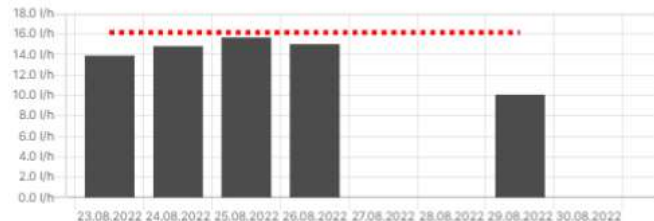
TOTAL FUEL CONSUMPTION

LAST 1 WEEK DELTA



AVERAGE FUEL CONSUMPTION

LAST 1 WEEK MAXIMUM



Lab mode is currently active
pro 111.647



Fuchs Connect Portal



Search



Mv Account



Dashboard



Machines



Maintenance



Events



Assignments



Reports



Administration



Links



Instructions

Maintenance Tasks

MHL360F #5738



Maintenance at 3000 total Operating Hours

COMPLETED

Completed at:

3083 h

Target:

3000 h

Machine: MHL360F #5738

Model: MHL360F

Organization: [C] TSR Lünen [OU]

Created 29.06.2022 02:43, modified 15.07.2022 02:43



Maintenance at 2500 total Operating Hours

SKIPPED

Skipped at:

2954 h

Target:

2500 h

Machine: MHL360F #5738

Model: MHL360F

Organization: [C] TSR Lünen [OU]

Created 03.05.2022 02:43, modified 29.06.2022 02:43



Maintenance at 2000 total Operating Hours

COMPLETED

Completed at:

2362 h

Target:

2000 h

Machine: MHL360F #5738

Model: MHL360F

Organization: [C] TSR Lünen [OU]

Created 18.02.2022 01:43, modified 19.04.2022 17:01

Maintenance at 3000 total Operating Hours

COMPLETED

operating hours

Last known value when completed:

3083 h

Target:

3000 h

Assigned to:



User



MHL360F #5738

Model: MHL360F

Organization: ... [C] TSR Lünen [OU]

Description

Operating Hours: 2954

Activities:

- 500h Clean diesel engine radiator
- 500h Perform standstill regeneration (in advance of engine oil change)
- 1000h Charge air cooler inlet area; drain lubricating oil, condensate
- 3000h Grab hydraulic oil filter (optional)

Replace:

- 500h Engine oil
- 500h Engine oil filter
- 500h Filter insert for AdBlue / DEF EU (Stage IV+V / EPA Tier 4f)
- 500h Manual transmission oil
- 1000h Fuel pre-filter
- 1000h Fuel filters
- 1000h main air filter cartridge and safety cartridge
- 1000h hydraulic oil tank ventilation filter
- 3000h Hydraulic oil
- 3000h Return filter insert

Check:

- 500h Hydraulic oil

Lab mode is currently active

pro 11.1.647



Fuchs Connect Portal



Search



My Account



Dashboard



Machines



Maintenance



Events



Assignments



Reports



Administration



Links



Instructions

Events



MHL360F #5738



Refuel

SEVERITY 30

Event key: event.common.consumables.fuel.refill
Occurred: 26.08.2022 13:45
Machine: MHL360F #5738

DEF Refill

SEVERITY 30

Event key: event.common.consumables.def.refill
Occurred: 26.08.2022 13:30
Machine: MHL360F #5738

Refuel

SEVERITY 40

Event key: event.common.consumables.fuel.refill
Occurred: 24.08.2022 13:45
Machine: MHL360F #5738

Refuel

SEVERITY 30

Event key: event.common.consumables.fuel.refill
Occurred: 22.08.2022 13:35
Machine: MHL360F #5738

DEF Refill

SEVERITY 30

Event key: event.common.consumables.def.refill
Occurred: 22.08.2022 13:20
Machine: MHL360F #5738

Refuel

SEVERITY 30

Event key: event.common.consumables.fuel.refill
Occurred: 26.08.2022 13:45
Machine: [MHL360F #5738](#)

PROPERTIES

TIMESERIES

MAP

Key

Value

Start

26.08.2022 13:35

End

26.08.2022 13:45

Level Before

145 l

Level After

580 l

Level Difference

435 l

Operating Hours

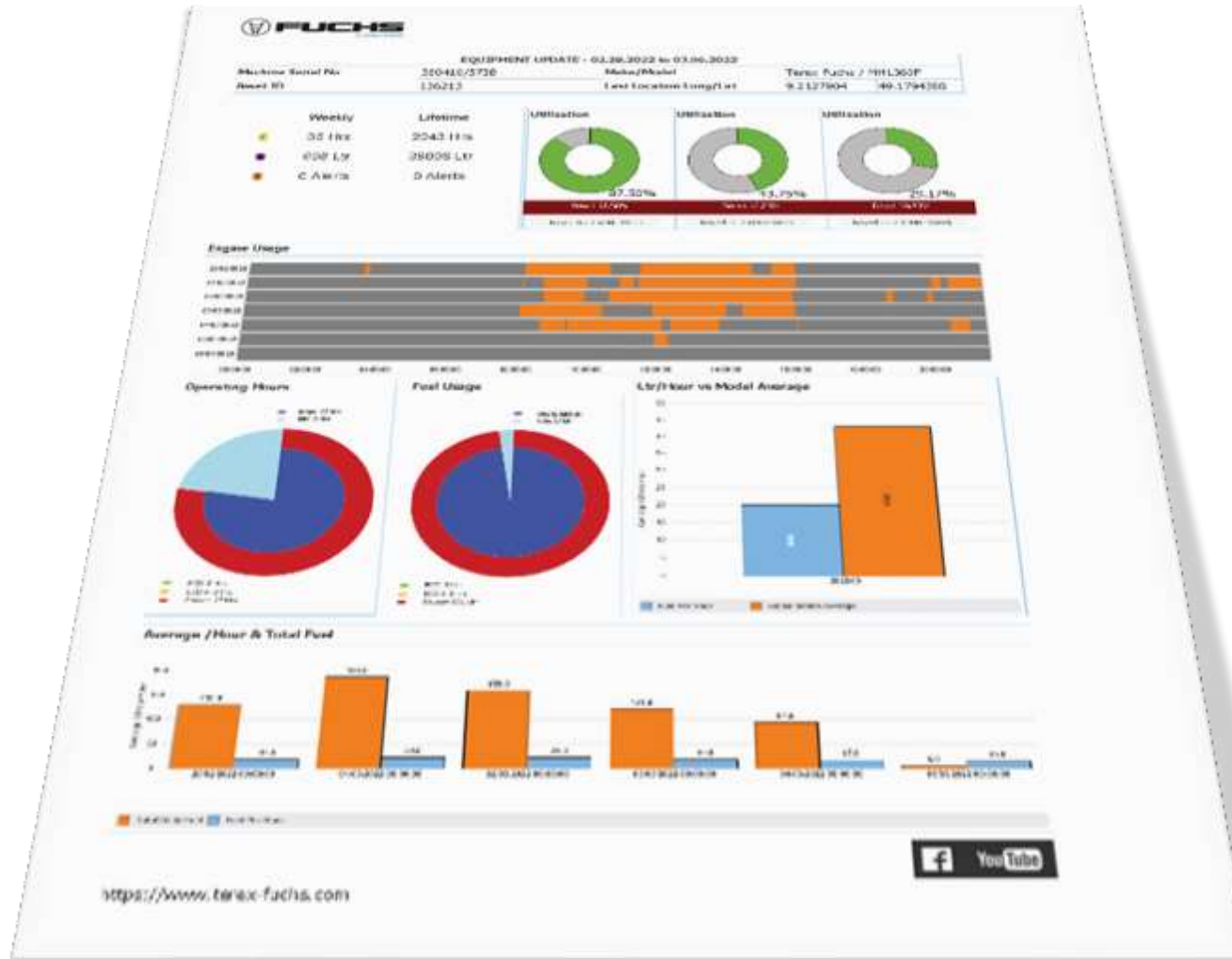
3310 h

Lab mode is currently active
pro 11.1.647



FUCHS
A TEREX BRAND

Fuchs Connect Reports



Advantages:

- ✓ Active weekly reporting
- ✓ Distributed for dealers and customers
- ✓ Usage profile of machines
- ✓ Chance to realize savings

Fuchs Helpdesk



Create ▾ View ▾ Technical ▾ Admin ▾ My Terex Portal

Technical Helpdesk

Search Issues....



ALL ▾

en-gb ▾

☐ Include Notes



Advantages:

- ✓ One contact platform with dedicated persons
- ✓ Issues visible for complete team
- ✓ Easy and transparent process



Open Issues

10



Assigned To You

0



Unassigned

1



Owned Issues

0

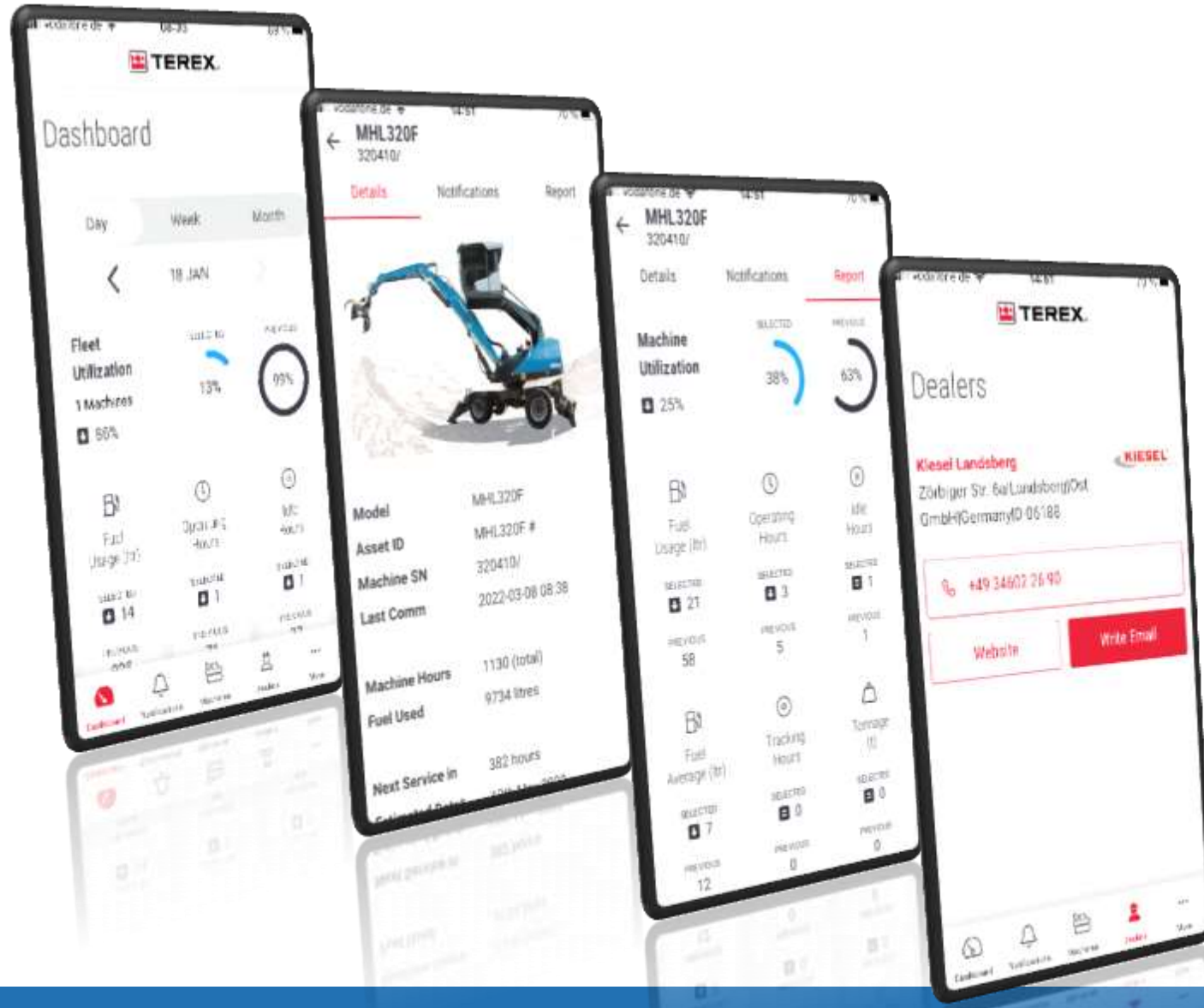


Closed Issues

1213



myTerex Customer Fleet App



Advantages:

- ✓ Terex MultiBrand App
- ✓ Designed for customers
- ✓ Included with each machine (active telematics)
- ✓ Available for Android and iOS

Fuchs OTA Update

Advantages:

- ✓ Regular Updates with new features and bugfixes
- ✓ Minimized standstill time during update
- ✓ No service tech required at customer site
- ✓ Guided update via the machine display



Fuchs Look-Up



Advantages:

- ✓ One system to search for:
 - Spare parts catalogues
 - Unit master cards
 - Operators manuals
 - Service documentation
 - Bulletins
 - Technical knowledge
- ✓ 24/7 available
- ✓ Efficient service with less time for preparation

Fuchs Remote Assist App



Advantages:

- ✓ Assistance in tricky situations from the factory without travelling
- ✓ Efficient and quick to maximize machine uptime
- ✓ Available to all Fuchs dealers
- ✓ Available for Android and iOS

Agenda

- Fuchs a TEREX brand
- Dealer Network in the Region
- Fuchs Value Added Services
- **Testimonials**
- Outlook



FOUR GENERATIONS OF FUCHS MHL

MHL340 E, MHL350 D & F & MHL360 C

PORT HANDLING Testimonial



PORT HANDLING

Testimonial

Scrap Handling
River Terminal



Bulk Handling
River Terminal

PORT HANDLING

Testimonial



PORT HANDLING

Testimonial

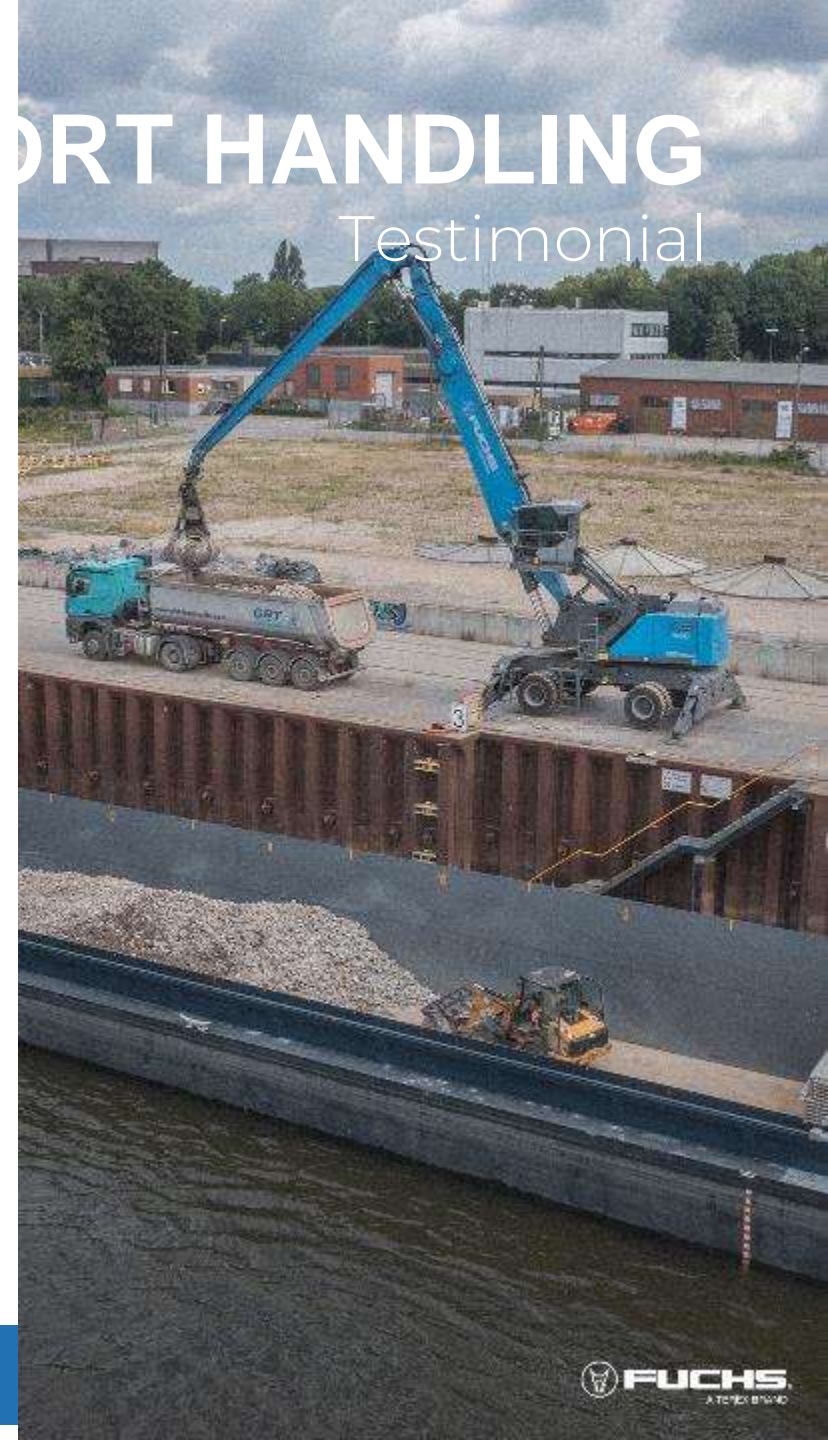
Scrap Handling
River Terminal



Bulk Handling River Terminal



PORT HANDLING Testimonial



An aerial photograph of a scrap metal processing facility. A large barge is docked at a river terminal, filled with scrap metal. A blue excavator is positioned on the barge, reaching into the scrap pile. The background shows a large pile of scrap metal and a road.

PORT HANDLING

Testimonial

Scrap Handling
River Terminal

Dry Bulk Handling
River Terminal

PORT HANDLING

Testimonial



PORT HANDLING

Testimonial

Scrap Handling
River Terminal



PORT HANDLING

Testimonial

Scrap Handling
River Terminal



Dry Bulk Handling
River Terminal

PORT HANDLING

Testimonial



DRY BULK HANDLING

River Terminal

PORT HANDLING

Testimonial



BREAK BULK HANDLING

Short Sea Shipping

PORT HANDLING

Testimonial



DRY BULK HANDLING

Seaport

PORT HANDLING

Testimonial



Agenda

- Fuchs a TEREX brand
- Dealer Network in the Region
- Fuchs Value Added Services
- Testimonials
- Outlook





PORT HANDLING

Testimonial

UNTIL NOW

1119 S Gantry

- Max. length: 25 m/ 82'
- Max. weight: 110 t/ 242,000 lbs
- Biggest model in the portfolio



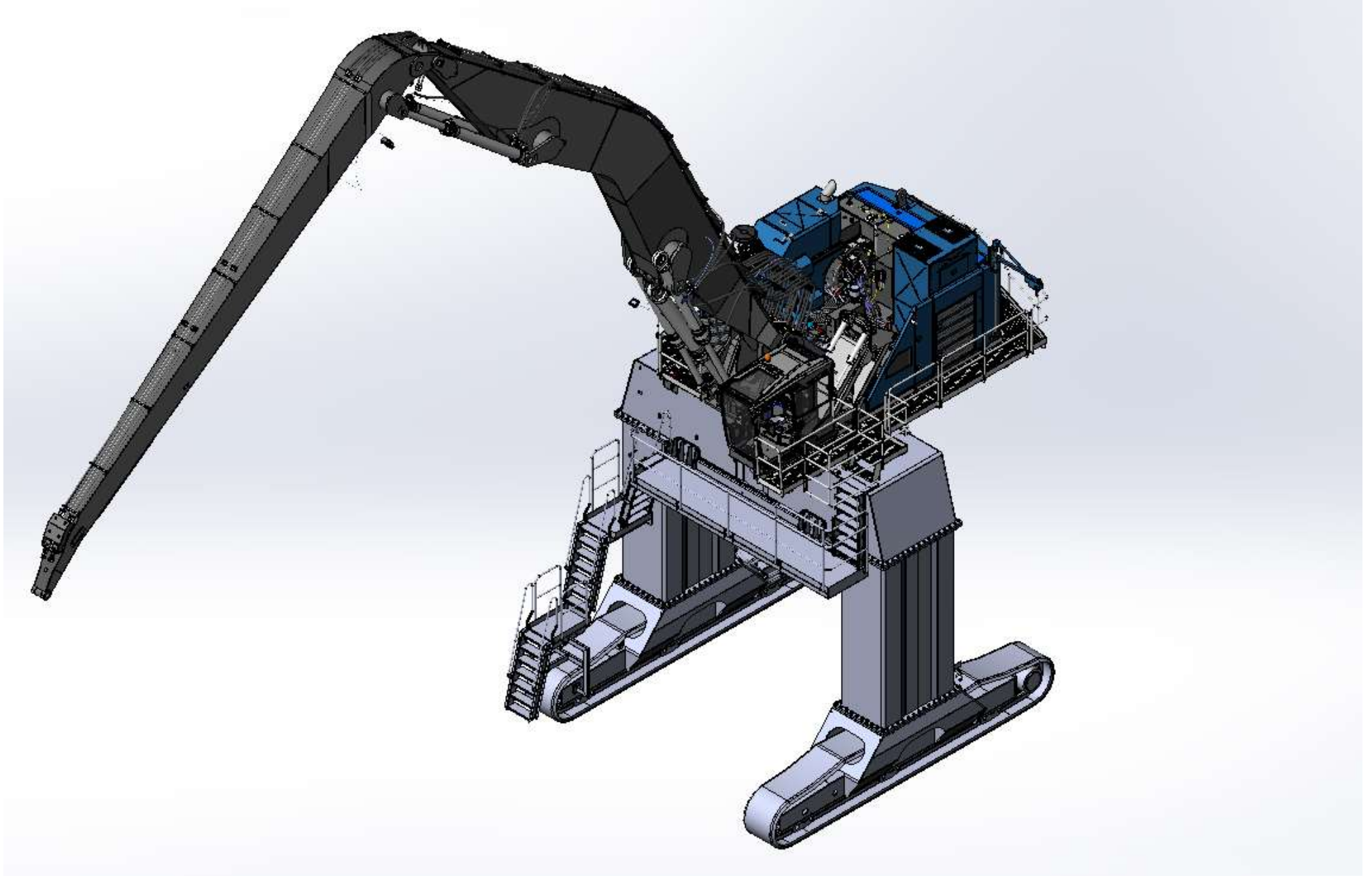
FUCHS

A TEREX BRAND

INTRODUCING:
The FUCHS Port
Handling Series

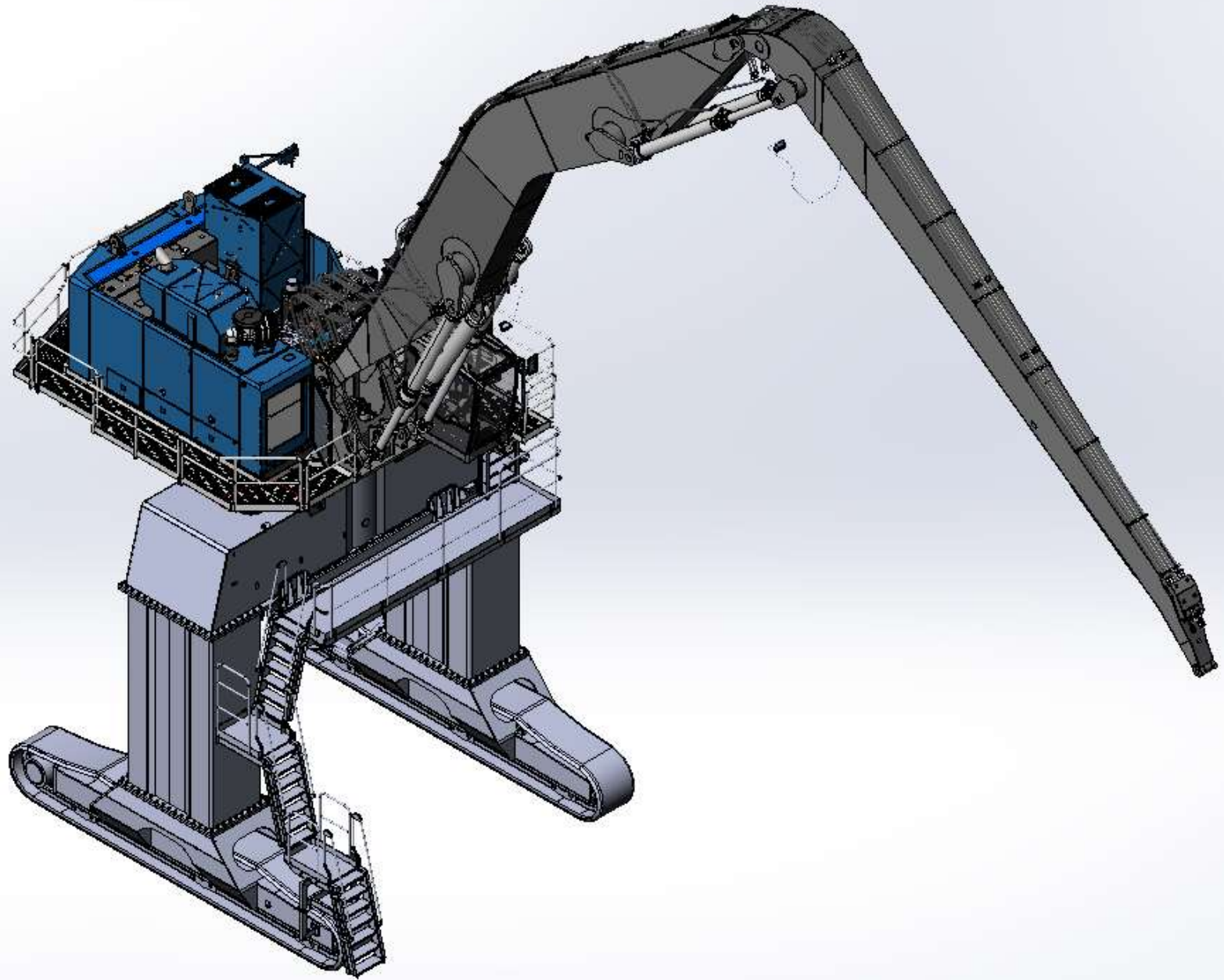
F120 MH

Gantry



F120 MH

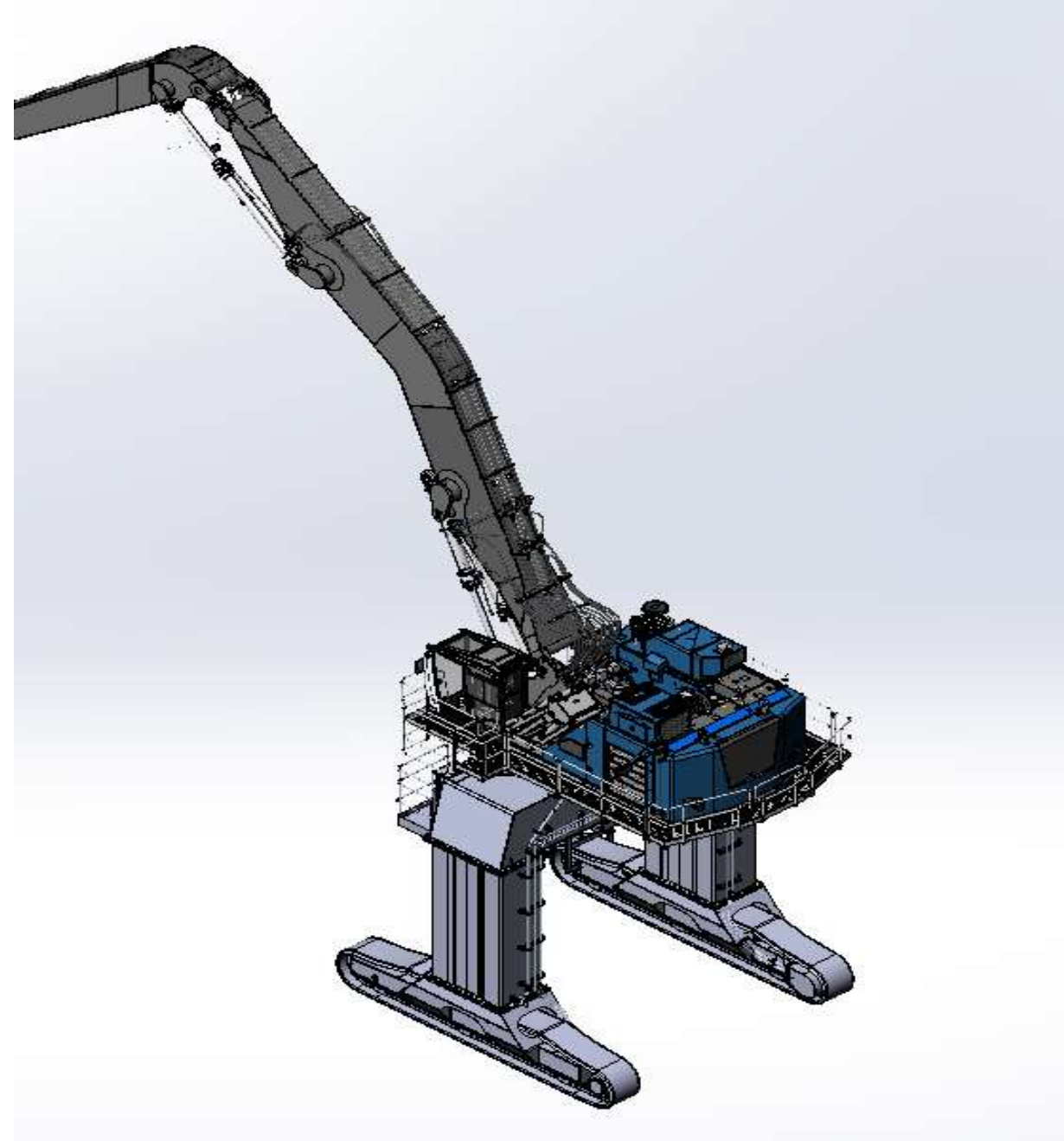
Gantry



F120 MH

Technical Details

- Operating weight starting at **120 t/ 264,000 lbs**
- Min. reach **19 m/ 62'4"**
- Max. reach **27 m/ 88'6"**
- Deutz TCD 12.0 V6
- Hydraulic Hybrid System
- Electric Pilot Control
- **First Model of an ALL NEW portfolio**



F120 MH

Uppercarriage Design

Water- and Intercooler

Hoist Points
(integrated in the steel frame)

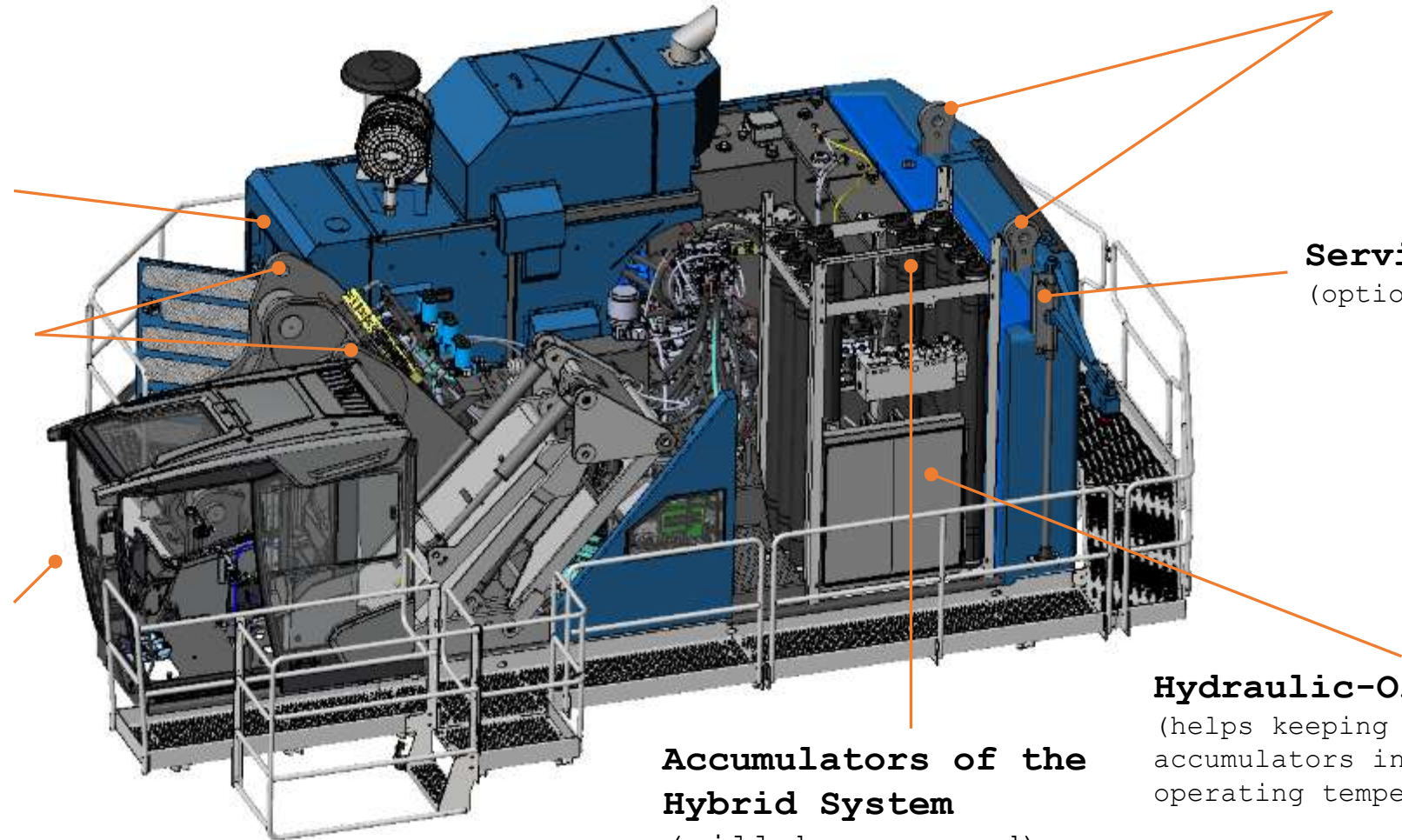
**FUCHS Comfort Cab
in & out**
(a bigger „Marina Cab“ will be
available as an Option)

Hoist Points
(integrated in the steel frame)

Service Crane
(optional)

**Accumulators of the
Hybrid System**
(will be covered)

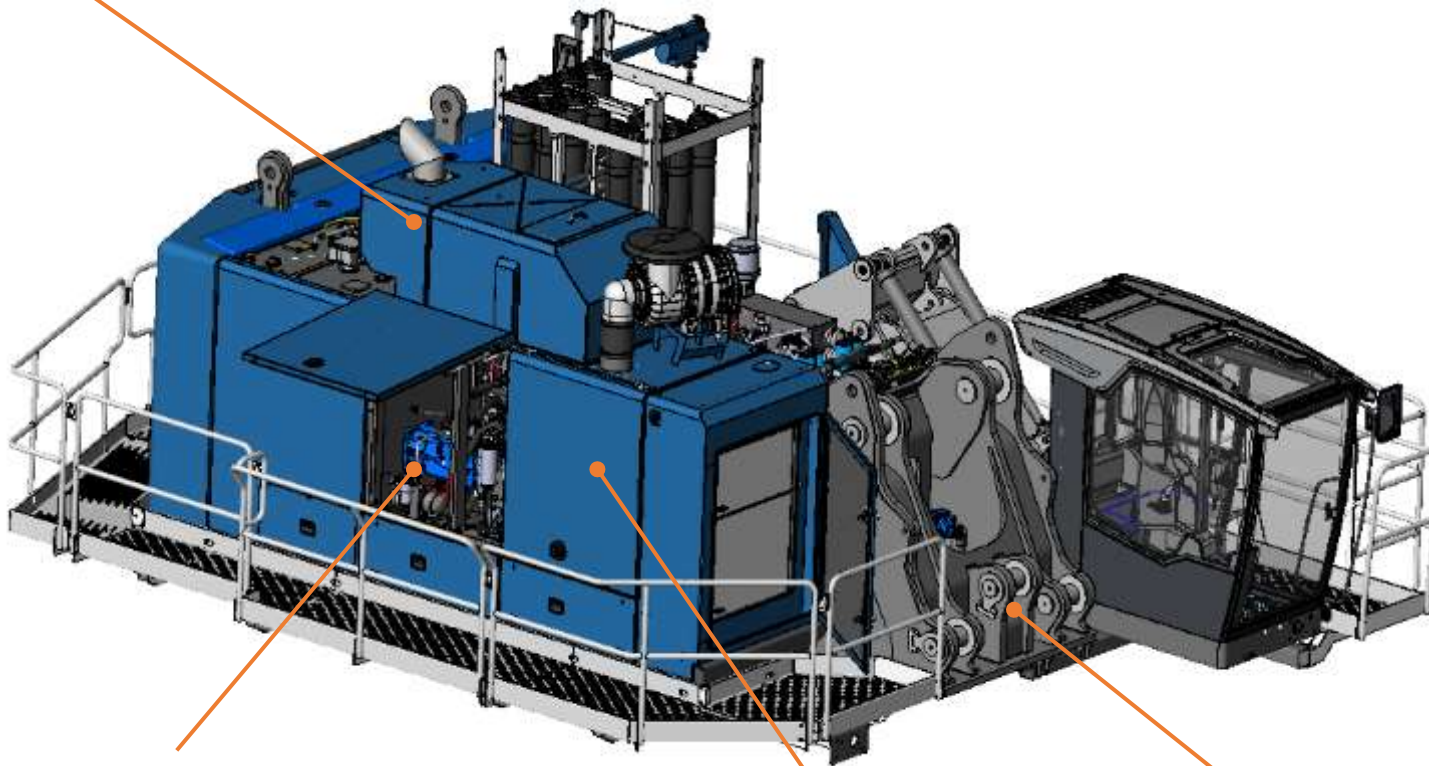
Hydraulic-Oil Cooler
(helps keeping the
accumulators in the best
operating temperature)



F120 MH

Uppercarriage Design

EAT System



Engine
(Deutz TCD 12.0 V6)

**All covers are made of
sheet metal**

3rd. Cylinder



THANK
you