

A large container ship is docked at a port at night. Several red and white cranes are positioned along the ship's length, lifting and moving colorful shipping containers. The ship's hull is blue with a white 'C' logo. The water in the foreground is dark, reflecting the lights from the ship and cranes. The sky is dark with some clouds.

Driving productivity through innovation

Dominic Lim
21 March 2024

BROMMA

v1.0



Bromma TODAY

- Over 20,000 spreaders delivered
- Spreaders delivered to 99 out of the top 100 ports worldwide
- Headquarters in Singapore
- Spreader production is located in Ipoh, Malaysia
- Global sales & service network in 40 countries



Ship-to-shore spreaders



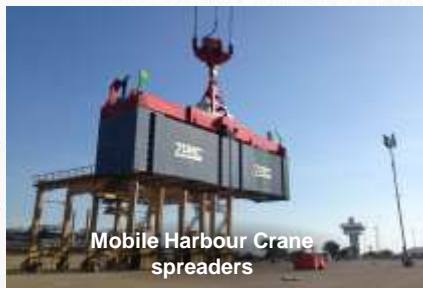
Yard crane spreaders



Upgrades &
Refurbishments



Digital services



Mobile Harbour Crane
spreaders



Mobile Equipment spreaders



Maintenance



Spare Parts

EQUIPMENT

SERVICES

Full range of
**SPREADERS AND RELATED
SERVICES**

Bromma innovations that drive productivity



Bromma Spreader Monitoring System

A cloud and web-based system that provides an overview over the entire spreader fleet's health: real-time troubleshooting, maintenance planning and insight to operational KPI's

BROMMA



All-electric STS45E G2 PLUS

No compromises on the productivity and energy consumption reduced to up to 90%



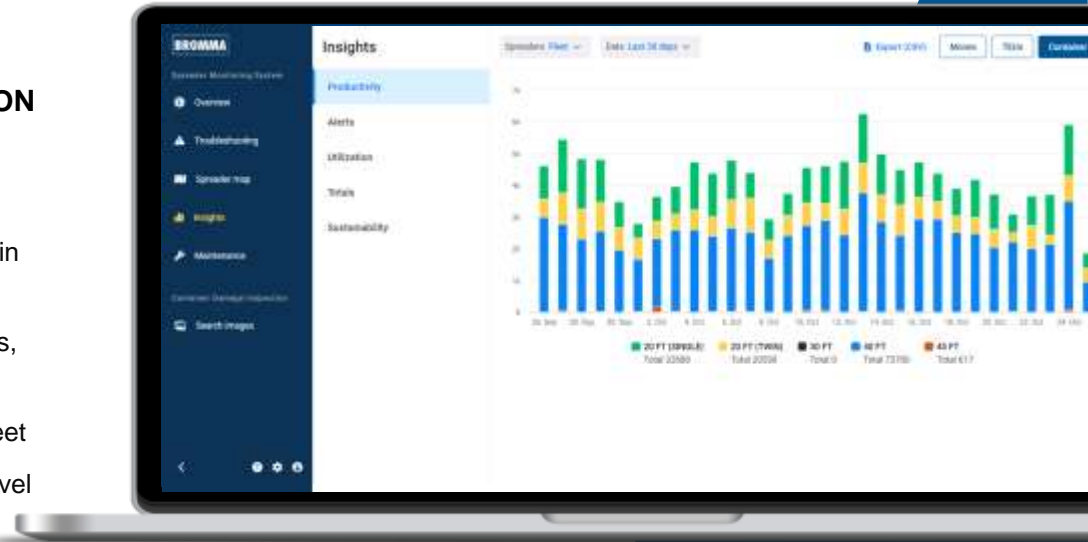
Bromma Hawkeye

Innovative camera platform that offers to monitor operations in real-time, enabling to make data-driven decisions

BROMMA SMS AT A GLANCE

SPREADER MONITORING SYSTEM IS A SUBSCRIPTION BASED WEB APPLICATION PROVIDING:

- ✓ Real time monitoring of spreader “health” for each spreader in the fleet
- ✓ Packaged information on issues and recommended solutions, with highlights on what is most important
- ✓ Structured overview of planned maintenance for spreader fleet
- ✓ Statistics on performance, productivity and issues on fleet level and for individual spreaders



Bromma Climate Commitment

Cutting down greenhouse gas emissions by 50% by 2030

Bromma's climate ambition includes activities across the end-to-end value chain



Materials Supply

- Integration of CO2 reduction criteria in Bromma sourcing decisions
- Evaluation of fossil-free steel for inclusion in Bromma spreaders (partnership with SSAB)



Own operations

- Implementation of clean energy in the Bromma factory
- Reduce, Reuse and Recycle Program across Bromma
- Company-wide use of electric vehicles



Use of spreaders

- Boosting our all-electric offering for all crane spreader applications
- Further developing energy-efficient solutions for hydraulic spreaders

All-electric STS45E G2 PLUS

- No compromises on the productivity
- Improved structural design
- Reduces energy consumption and CO2 emissions by up to 90%
- Eliminates hydraulic oil spills
- Significant cost savings over spreader lifetime

BROMMA



Hawkeye supports terminal operations



Crane operator

- Video feeds
- Visual information(s)



Container handling

- OCR
- Safety features helping to avoid risks
- Container Damage Inspection



Automation

- Video feeds
- OCR
- TTDS

Give your spreaders accurate and precise vision with Bromma Hawkeye



**Boost productivity
with accuracy**



**Installation to any
spreader type**
(STS, Yard or Mobile
Equipment)



**Easy integration
with other systems**



CUADRICOM, INCORPORATED

"Your need, our priority"

BROMMA

A Tradition of Innovation

We serve Anyday, Anytime, Anywhere