

Latest IT Solutions For Processing Various Types of Cargo And Transport at The Terminal To Ensure Its Competitiveness And Sustainability

*Giovanni Migliaccio,
Senior Vice President Sales & Marketing*



28+ years experience



24/7/365 support



5 offices worldwide



400+ projects

Who we are

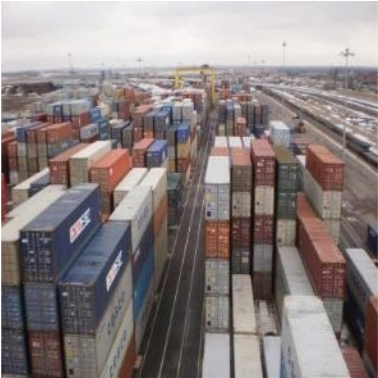
SOLVO is an international leading vendor of TOS, WMS and YMS solutions and systems integrator on the global markets.

We are a leading provider of high-end supply chain solutions to help and optimize the logistics and all cargo handling.

Our approach

Not just development and implementation. We have the largest expertise in automating storage logistics and are ready to work on a turnkey basis, taking risks. We are a leading firm in providing quality and value to our customer.

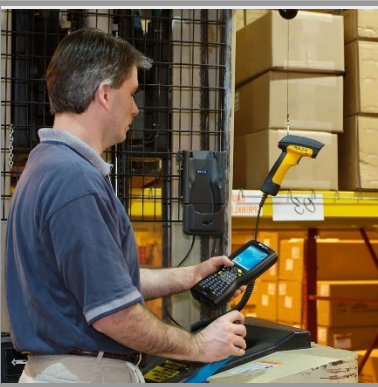




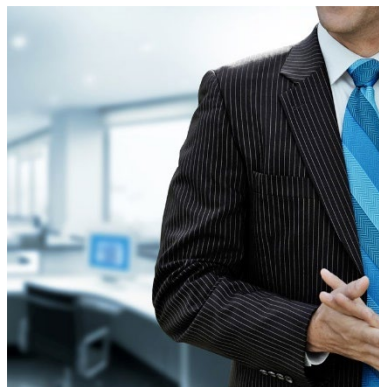
**Solutions for ports
and terminals**



**Solutions for yard
management**



**Solutions for
warehouse logistics**



**Consultancy in logistics
and system integration**

400+
projects



INTERNATIONAL TRADE SUMMARY

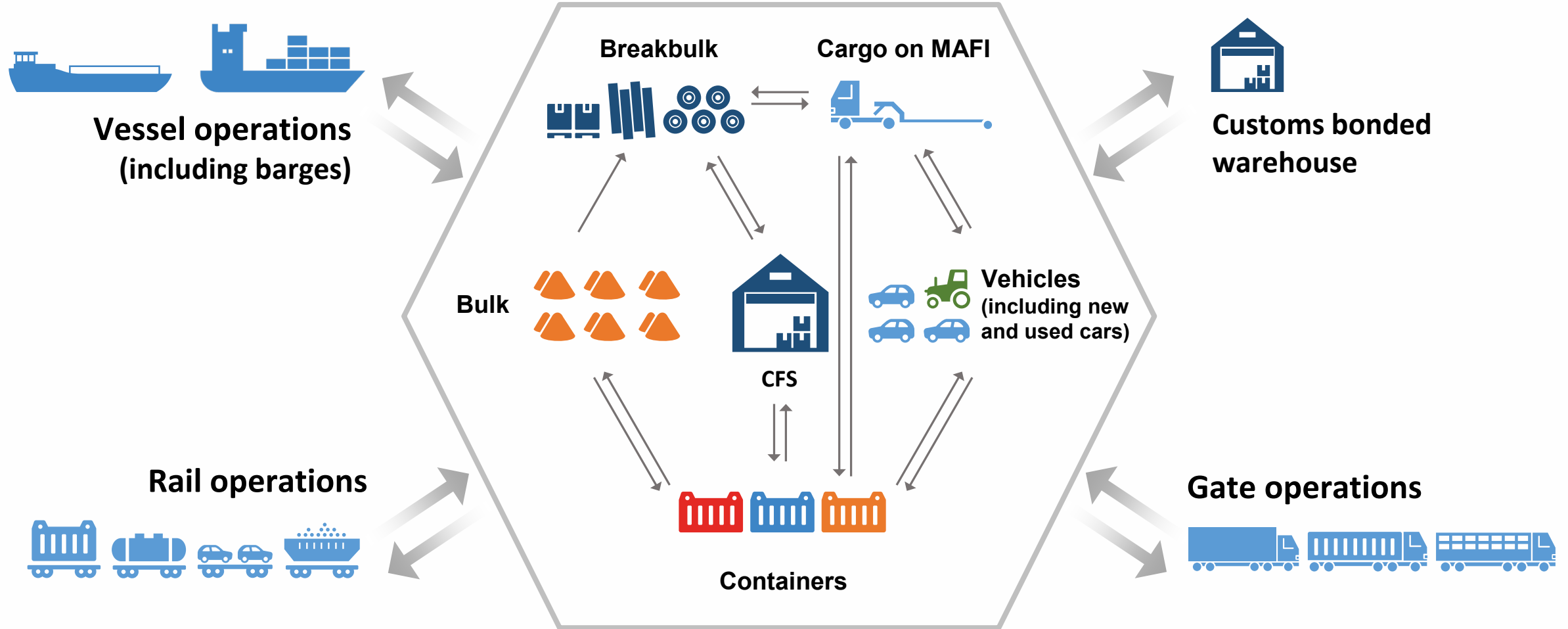


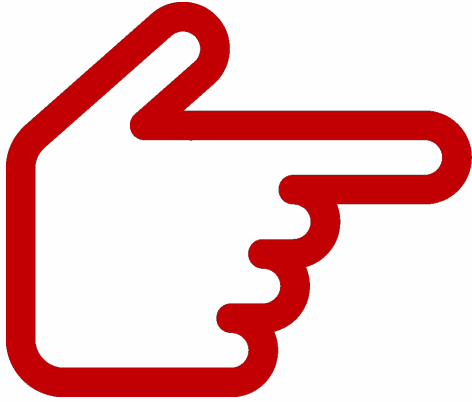
- Moving to Global Supply Chain
- Global Information Environment Connecting All the Elements of the Supply Chain
- End to End visibility - to final customer

=

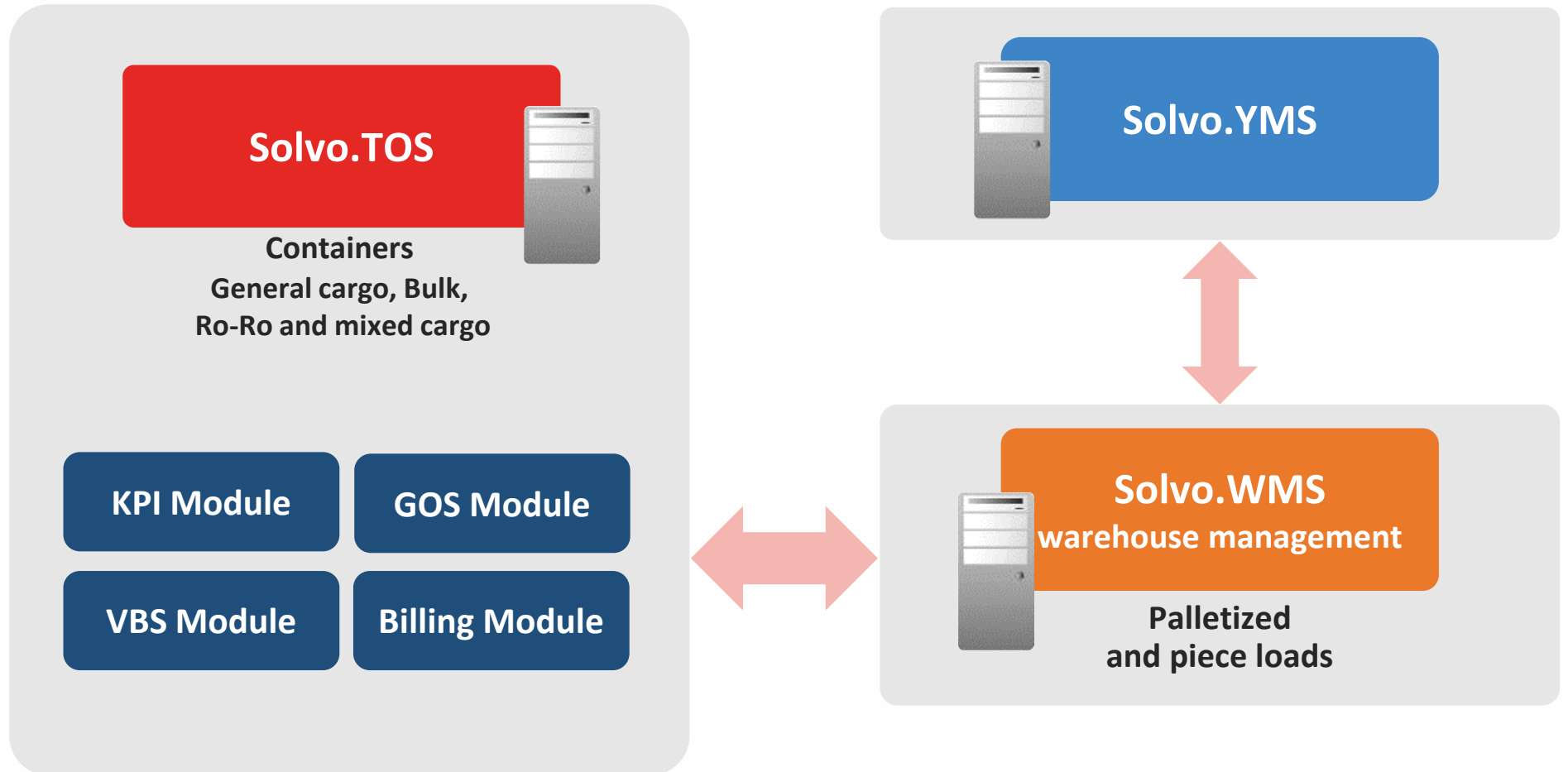
**Modern TOS as a full Supply Chain
solution and an integration platform**

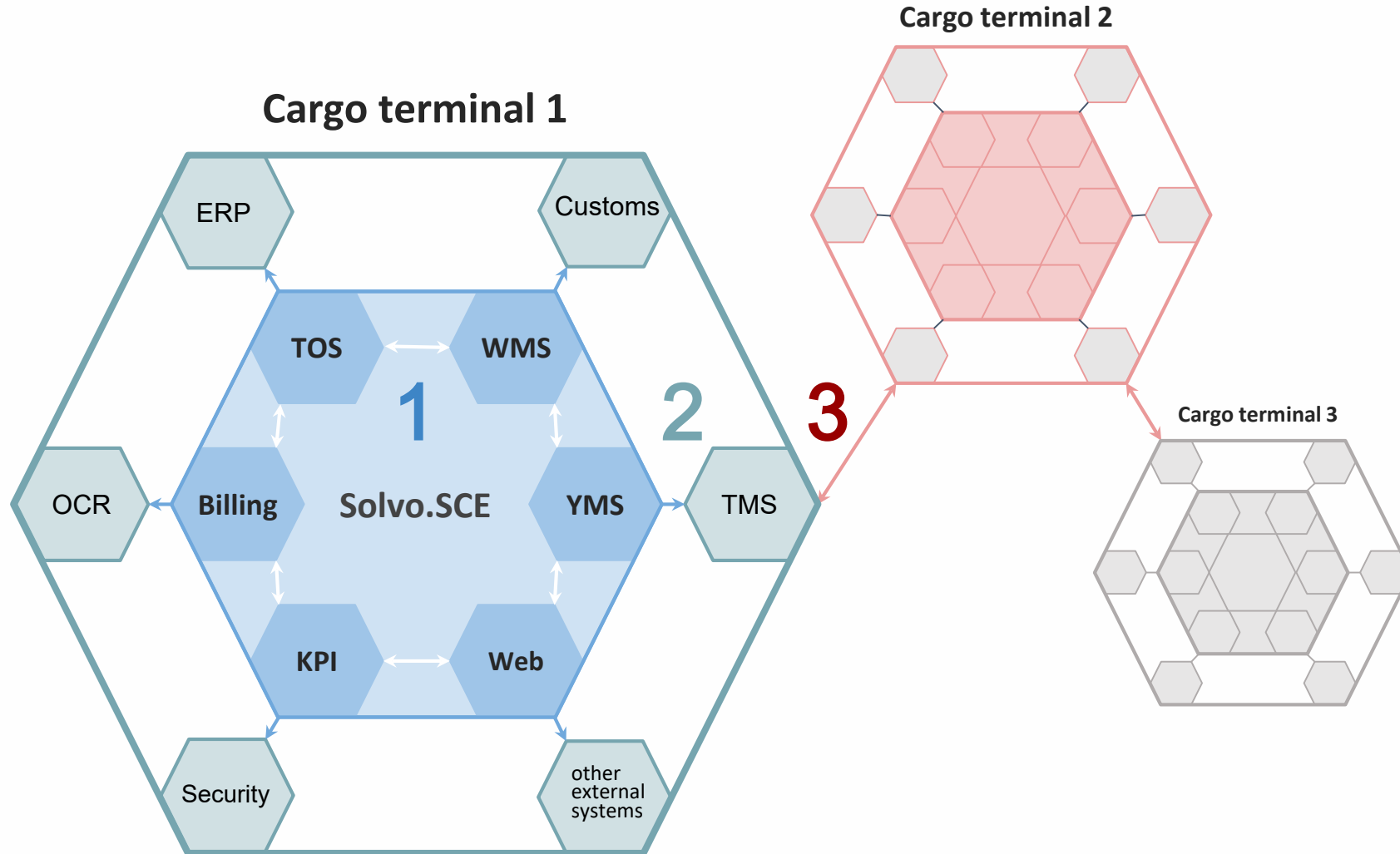
Support of Complex Technological Chains

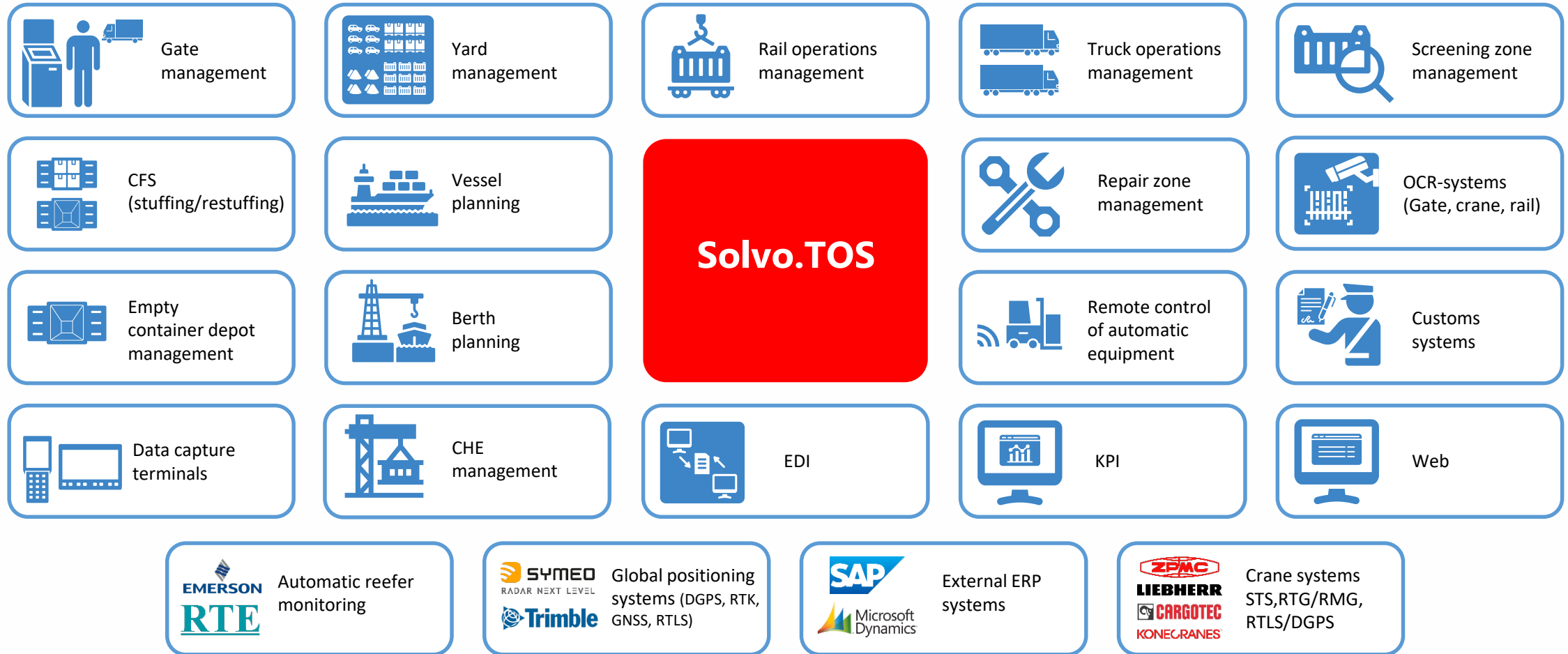


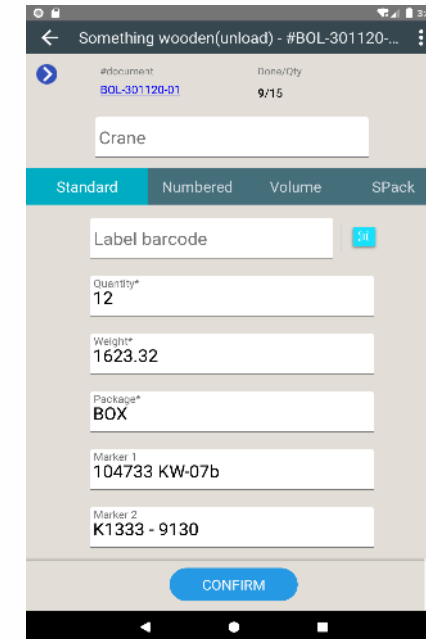
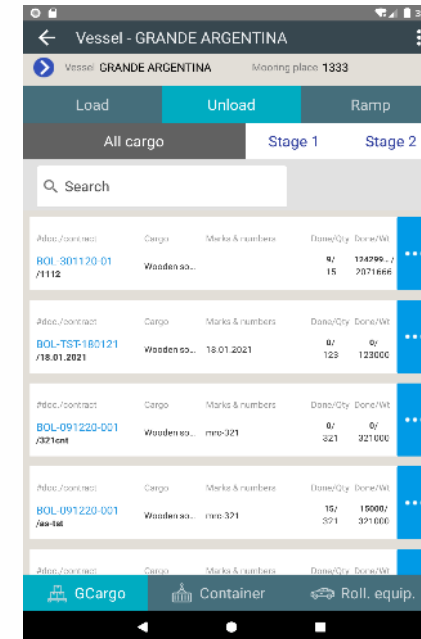
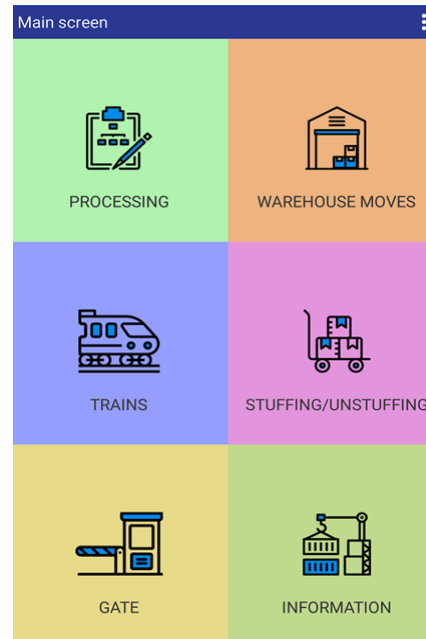


- ④ The different document format leads to problems with information exchange between various stakeholders in the supply chain;
- ④ Poor planning cause delaying with the cargo delivery time and confusions due to lack of required information;
- ④ Inability to track the status and current location along the extended Supply Chain ;
- ④ Manual planning of personnel and equipment operations not feasible due to the increase of task and works, impacting into the processing time significantly.









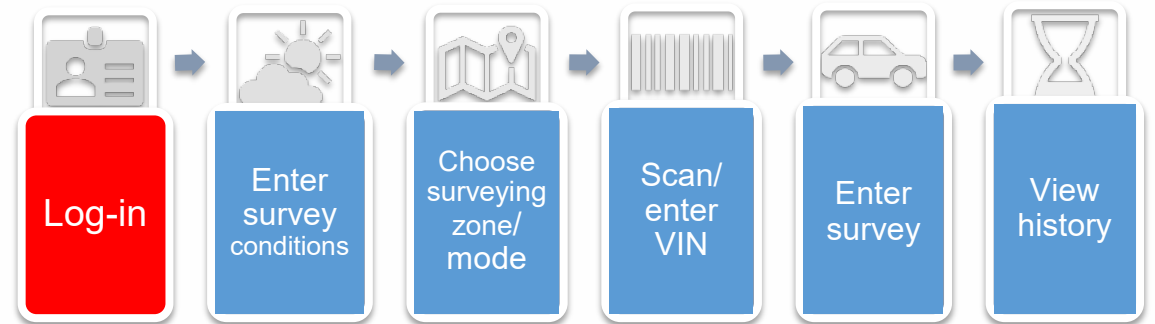
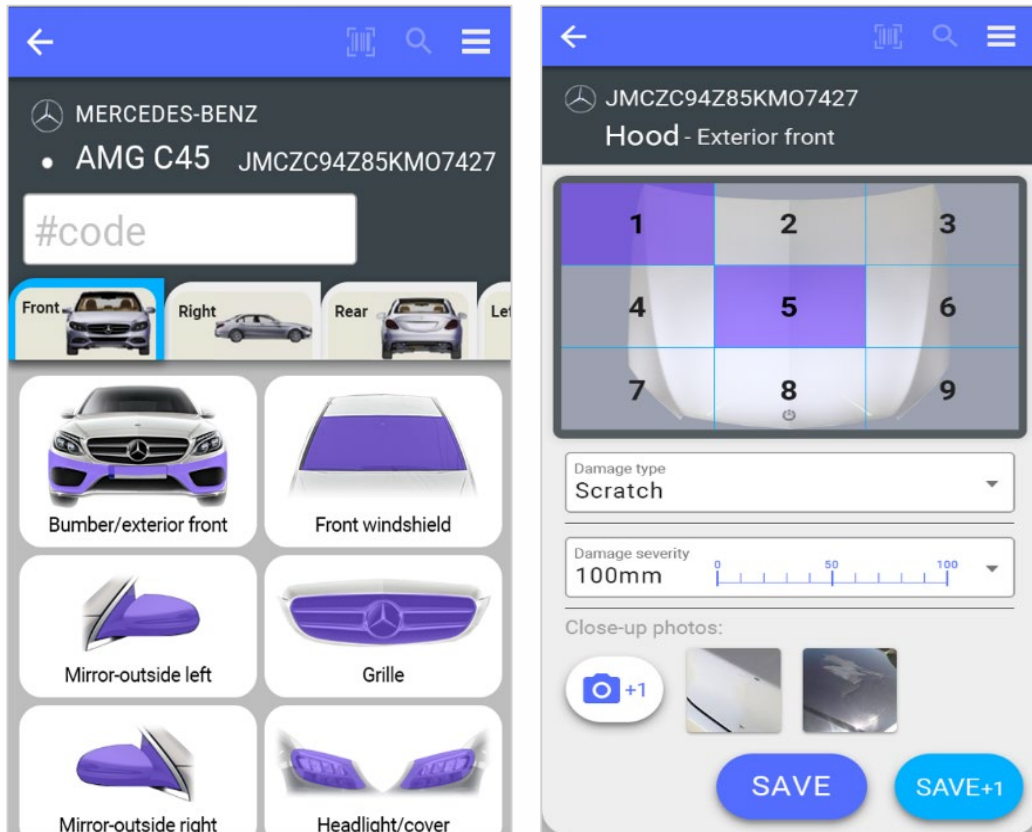
Among cargo characteristics processed by Solvo.TOS:

Package type, weight, quantity, dimensions (length, width, height), marking (label), markers.

For each cargo type the system can have specific characteristics, for example, cars:

VIN number, color, mode, dimensions (length, width), weight, type.

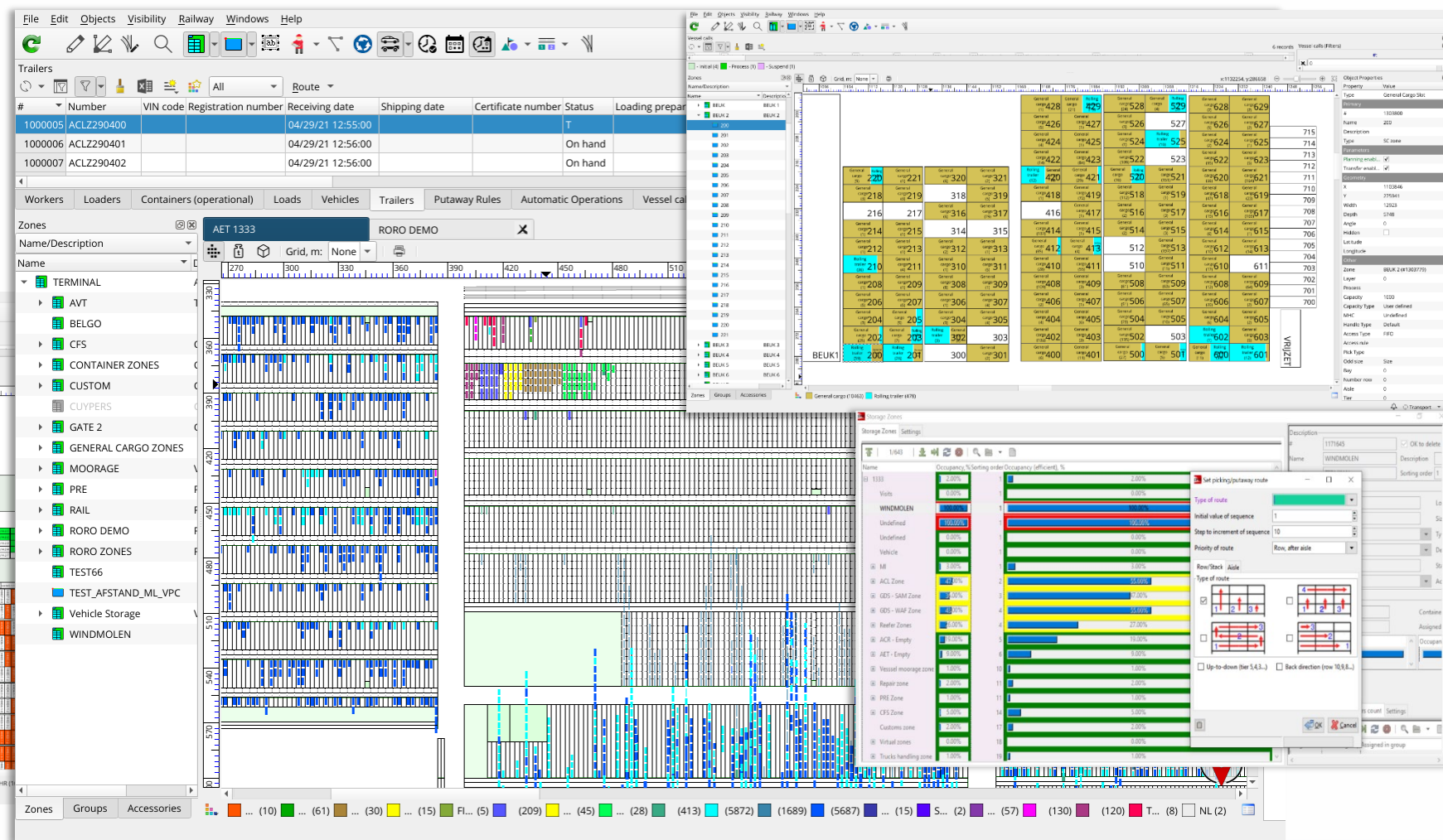
New Survey Mobile application



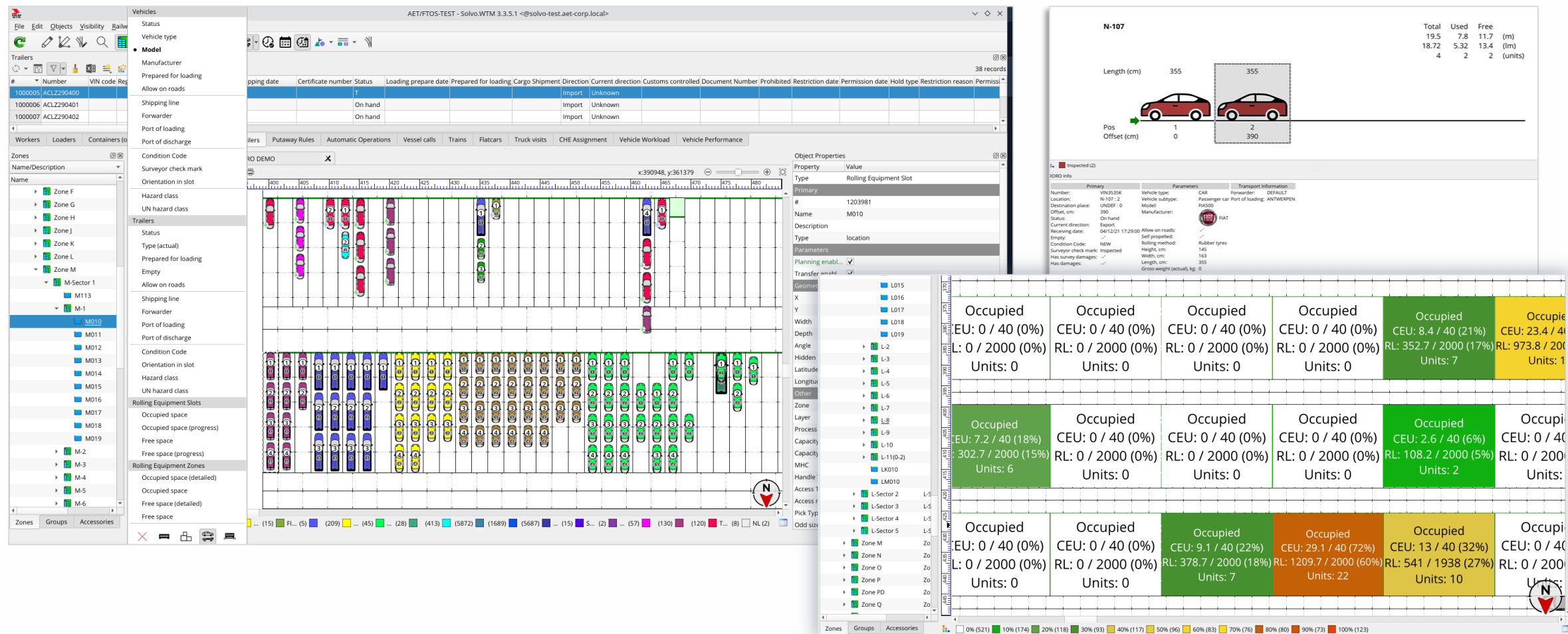
The application is based on the AIAG international standard.

The application has flexible settings and according to the weather conditions of the surveyor: before starting the shift it is necessary to set such parameters as time of day, weather conditions and vehicle condition: soiled, clean, snow/ice covered.

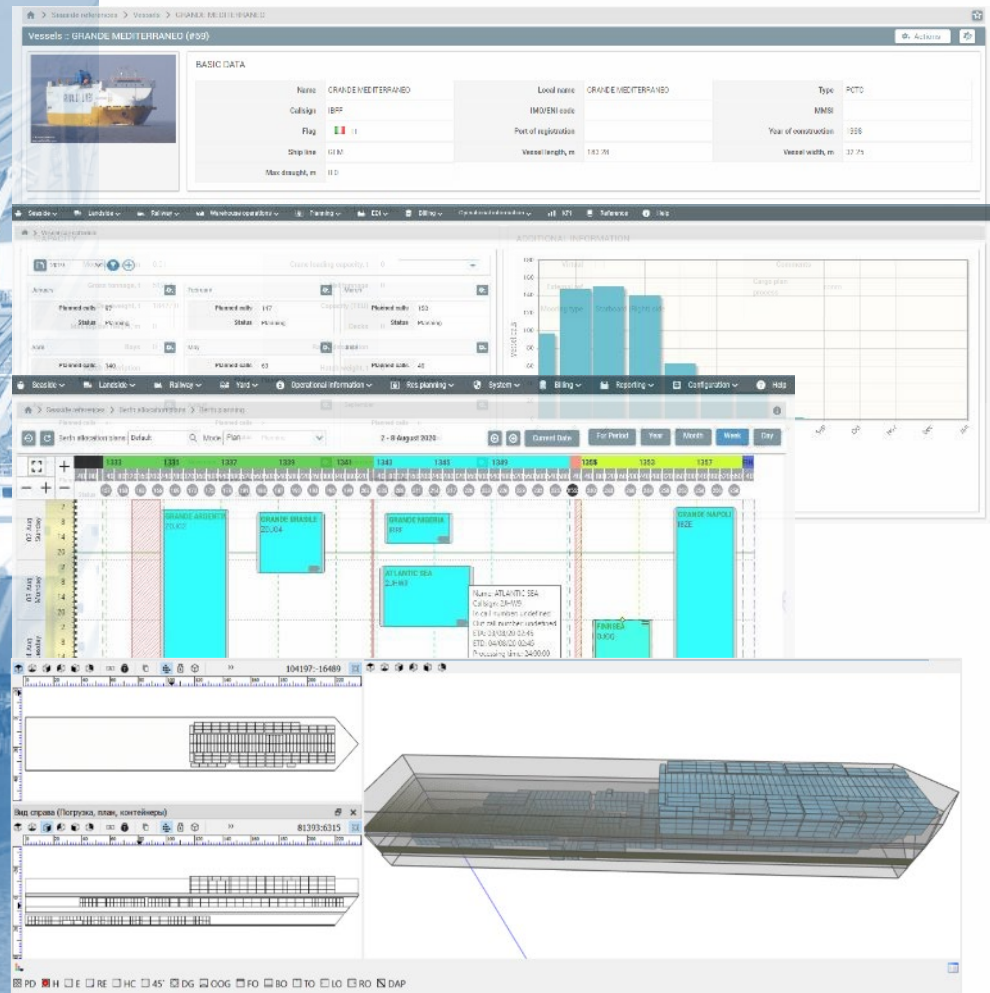
- **WTM: Graphic terminal layout viewer and editor**
- **Dynamic stacking based on rules and strategies**
- **Dock scheduling**



Realtime visibility. Graphical terminal layout



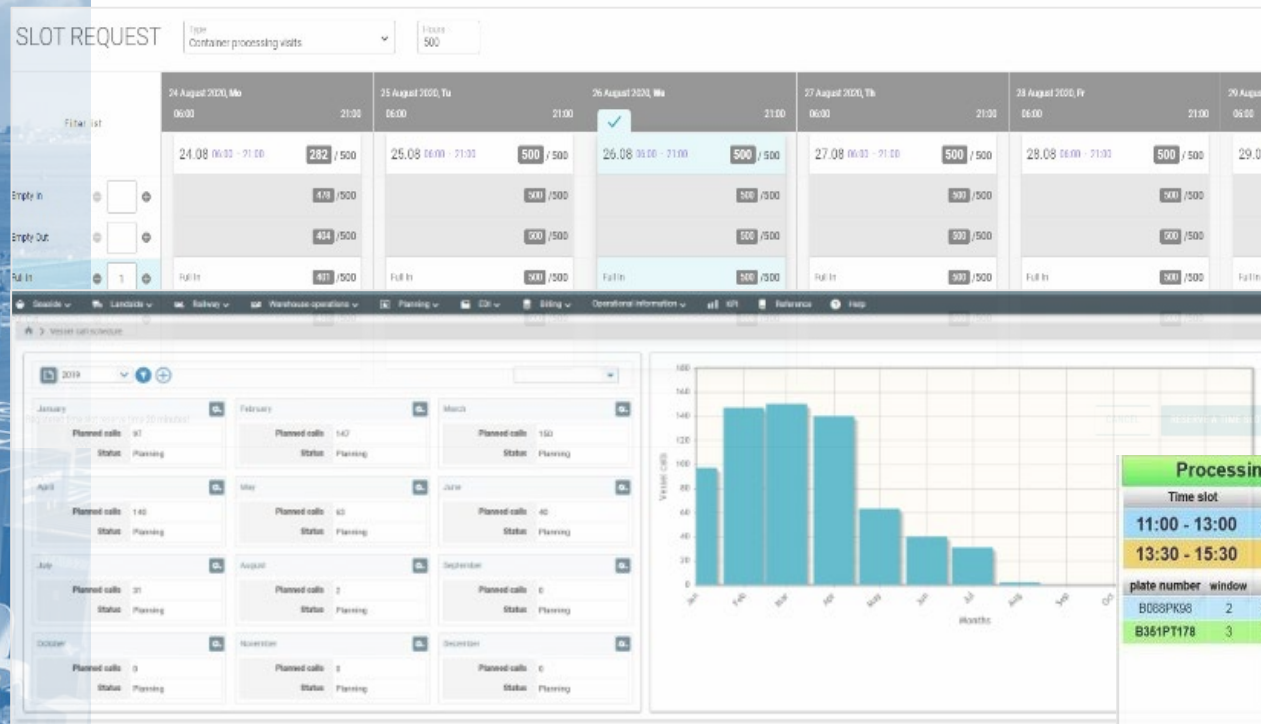
Vessel planning capabilities



Solvo.TOS has a wide range of options for planning vessel arrivals.

With the help of tools such as the Cargo Planner and the Universal Vessel Planner it is possible to plan the loading and unloading of containers in the required order, taking into account the container characteristics and specifications.

Once at the terminal, the container is recorded in the system and all of its further movements are registered in the system.



Solvo.TOS creates truck appointment using time slotting technology.

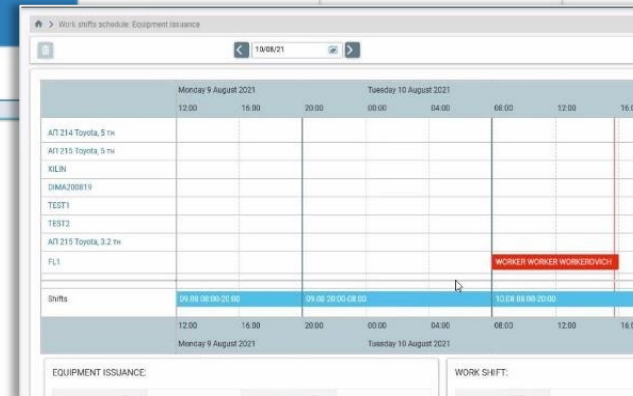
Processing			Standby					
Time slot		Status	plate number	duration	plate number	duration	plate number	duration
11:00 - 13:00		Processing	B782OK178	4 min.	B630BO178	20 min.		
13:30 - 15:30		Standby	K490HT190	4 min.	A844CO35	32 min.		
			B669MM178	8 min.	Y027CP78	32 min.		
plate number	window	Status						
B088PK36	2	Processing	H790PP178	8 min.	B457TP06	36 min.		
B361PT178	3	Invitation	M597MC178	12 min.	B072EO178	36 min.		
			T706XY47	12 min.	O932PT178	40 min.		
			K049TB178	10 min.	B800KA06	40 min.		
			Y687KE78	16 min.	P910KX47	44 min.		
			B070OE178	20 min.				
			H356TC178	20 min.				
			B035BP178	24 min.				
			B156CB178	24 min.				

Solvo.TOS for General Cargo

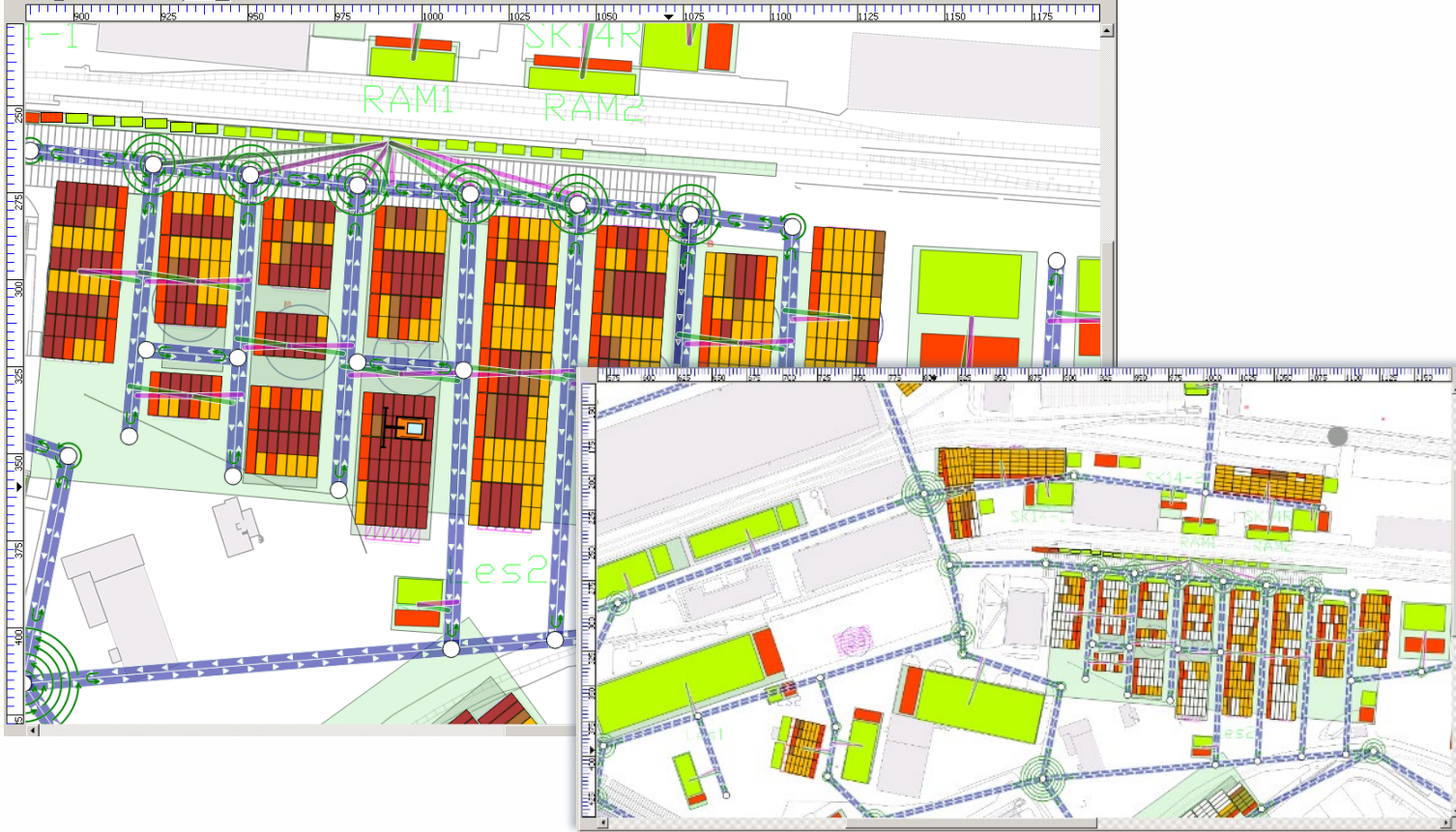


General cargo is one of the most complex categories in terms of organization of handling, storage, and accounting.

Solvo.TOS enables to manage all the operations with general cargo taking into account it's dimensions, weight, cargo types, storage rules, handling equipment and other criteria



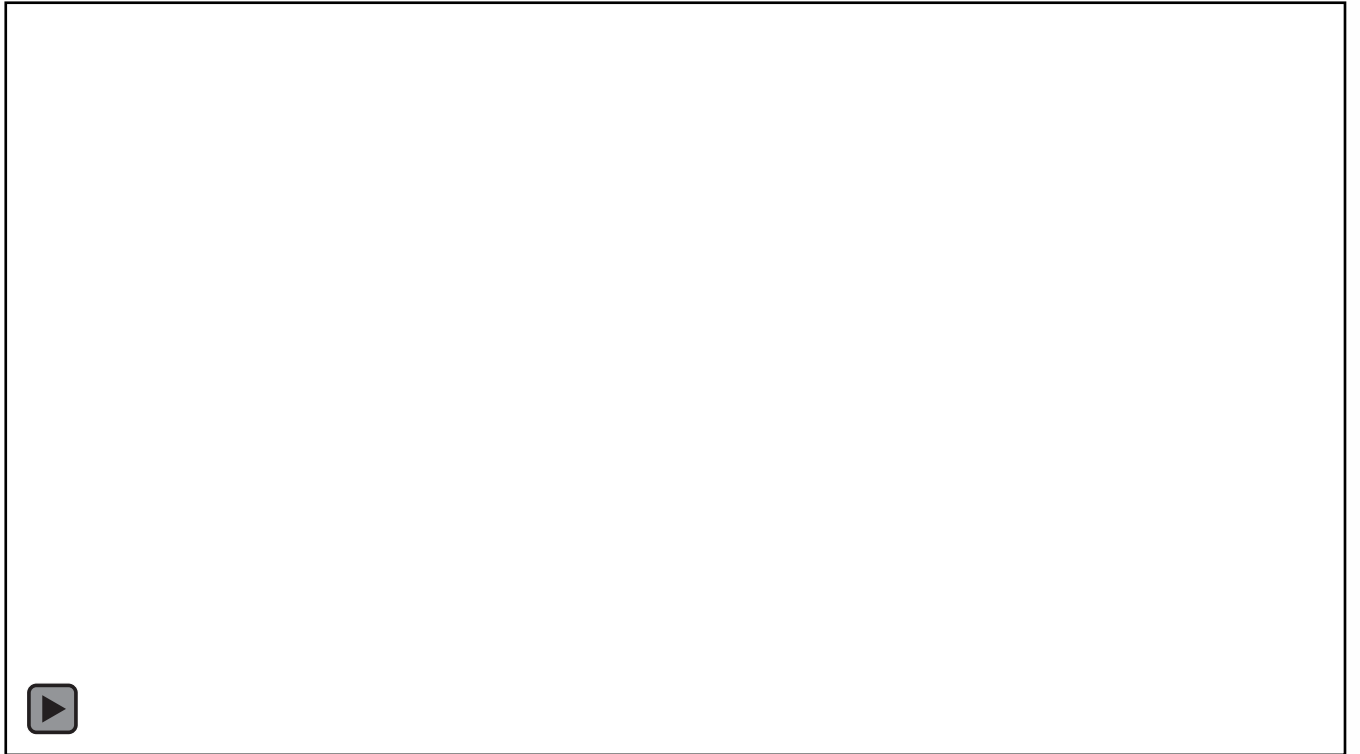
CHE Accounting and assignment



- Solvo.TOS analyzes the available data about the road network of the terminal and builds the optimal route for a MHE
- The entry of road data is carried out through the roads editor function - part of the Real-time terminal layout viewer and editor
- The user defines the key checkpoints, permitted turns and delays
- The user can also then set the availability of a stack for processing from a selected road

Key performance indicators

The **Solvo.KPI module** is designed to present statistical and dynamic data on the operation of a cargo terminal or warehouse, people, and equipment in a graphical form.



The result of the work is a reduction in the time for compiling reports, an increase in the transparency of production processes, and a reduction in the time spent on evaluating work. Formation of data for the wage system.

- ✓ Increase cargo handling efficiency & terminal throughput
- ✓ Increase personnel & equipment productivity
- ✓ Improve transparency of technological and commercial processes
- ✓ Increase in load handling speed in the storage zone
- ✓ Reduction in re-handles (non-productive container moves)
- ✓ Eliminating human factor
- ✓ Improving health and safety ops
- ✓ Finding efficiencies in processes and logistics
- ✓ Improving margins
- ✓ Reducing operating costs



Smart solutions for your logistic tasks