

# SENNEBOGEN

SMART CARGO HANDLING SOLUTIONS TO INCREASE PRODUCTIVITY &  
REDUCE CARBON EMISSIONS



**MEDITERRANEAN**  
Ports and Logistics 2026



MOVE  
**BIG**  
THINGS



# INDUSTRIES

## RECYCLING



## STEEL & SCRAP



## DEMOLITION



## TIMBER INDUSTRY



## TREE CARE



## LOADING



## CRANE RENTAL



## CIVIL ENGINEERING



## MINING



# PORT HANDLING & HARBOR CRANES

SENNEBOGEN

## Powerful in ports. Flexible on every job.

Whether bulk or general cargo, ship loading or unloading — SENNEBOGEN provides the right solution, from mobile harbor cranes to the world's largest material handler. Modular concepts, Green Hybrid technology, and up to 40 m reach ensure top performance in any port environment.



Diesel



Electric

**PROJECTING** we support you with individualized system consulting — ensuring you receive the solution that perfectly fits your application.

**OUR MACHINES** combine cutting-edge technology with tailor-made performance — reliable, powerful, and precisely matched to your requirements.

**IN AFTERSALES** we provide comprehensive service, training, and software updates to ensure maximum availability and smooth operation.

**TRAINING** and continuous knowledge transfer ensure that your teams are well prepared and able to use your machines to their full potential.



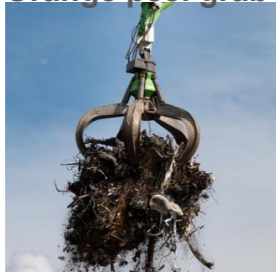
# 1 machine – many different types of cargo

## Bulk grabs

Clamshell grab



Orange peel grab



Timber grab

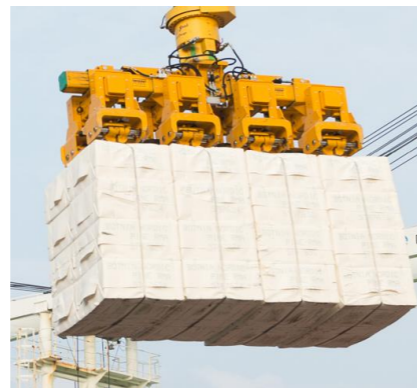
Bale grab

## Break Bulk attachments

Timber pack traverse



Pulp / cellulose traverse



Coil clamp



Paper roll grab



BigBag traverse



OILQUICK®



## Container Spreader



Container Spreader

# Electrification

Rail Gantry



Crawler Gantry



Mobile



## SENNEBOGEN EGREEN BOOST

Stage 1  
Evacuation

Stage 2  
Traveling only

Stage 3  
Full Operation

# Electrification

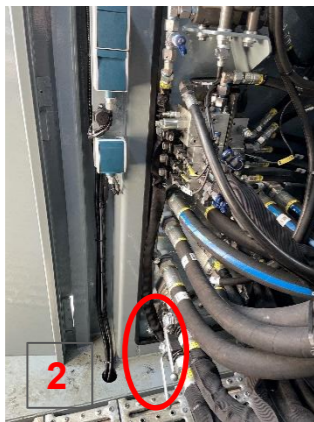
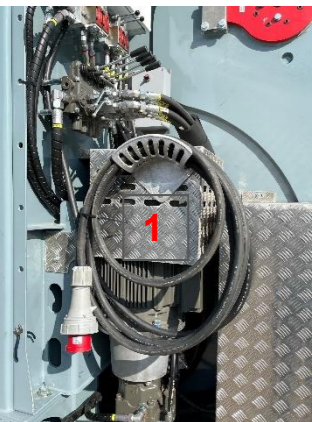


SENNEBOGEN EGREEN BOOST		
Stage 1 Evacuation	Stage 2 Traveling only	Stage 3 Full Operation

## Steered functions:

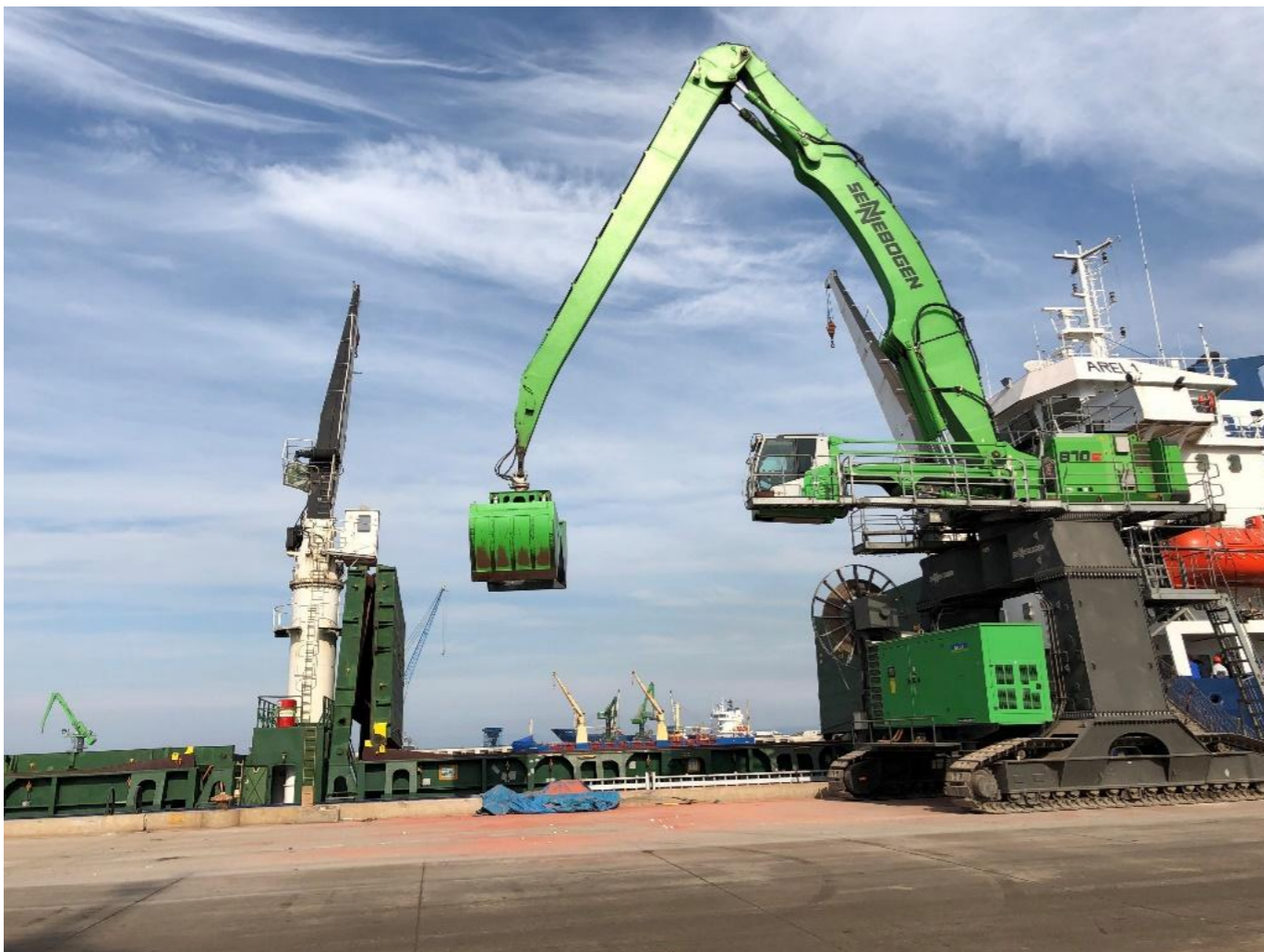
- Open grab
- Stick in / out
- Main boom in / out
- Swing

1. Plug in 400 V (22kW Motor) cable
2. Open handvalves in Powerstation
3. Start the E-Motor
4. Open the valves
5. Electric Power to Hybrid SCV
6. Manually open the SCV
7. Steer function



# Electrification

SENNEBOGEN EGREEN BOOST		
Stage 1 Evacuation	Stage 2 Traveling only	Stage 3 Full Operation



# Electrification

SENNEBOGEN EGREEN BOOST		
Stage 1 Evacuation	Stage 2 Traveling only	Stage 3 Full Operation



# Digitalisation

my**SENNEBOGEN** – Your central access to all digital services

## SENtrack

Real-time machine data worldwide via telematics

## Fleet Management

Convenient management of your entire machine fleet

## License Management

Easily manage and monitor software licenses

## SENNEBOGEN Troubleshooter

Guided error diagnostics — online and offline

## Remote Diagnostics

Check machine status and adjust settings remotely

## SENNEBOGEN Parts

View spare parts and order easily online

## Support Ticket System

Direct contact with the service team

## SENNEBOGEN Academy

Digital learning platform for training and education

## Machine Documentation

Online catalogue with up-to-date technical information



# Highest Uptime

Comprehensive performance and support.

## Global Presence

Over 300 service locations including technician teams

## Technical Support

First-class partner for maintenance and assistance

## Safe & Efficient

Maximum performance for your machines

## Efficient & Sustainable

Long-term value and extended service life guaranteed

## Service Consultant

Manufacturer expert knowledge for highest machine availability

## Premium Genuine Parts

High-quality original SENNEBOGEN components



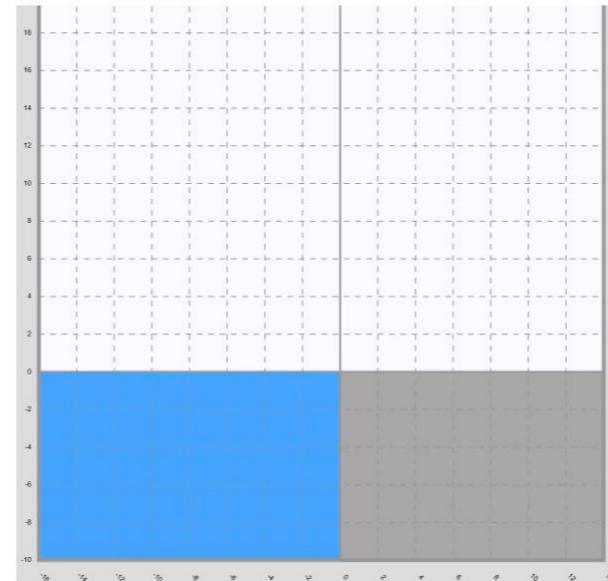
Training Academy



Customer Service Center



MYSENNEBOGEN > PROJECT-PLANNER



Machine

Machine type\*  
885G

Engine\*  
electric

Under carriage\*  
PR300/760

Equipment\*  
K38 Port HL

Pylon\*  
6.0

Cabin\*

Cabin elevation\*

SWITCH VIEW

MAXIMIZE

Harbor

### Turnover calculation:

Grabber Volume	Dead weight	Material	Density	Cycle time	Turnover	Filling	Total weight per Cycle
SGZ-3000.60-HD 3.0 m <sup>3</sup>	4.0 t	iron ore	2.8 t/m <sup>3</sup>	45 s 80.0 cycles/h	672.0 t/h	100.0 %	12.4 t
SGZ-6000.60 6.0 m <sup>3</sup>	4.7 t	fertilizer	1.0 t/m <sup>3</sup>	45 s 80.0 cycles/h	480.0 t/h	100.0 %	10.7 t
SGZ-4500.60 4.5 m <sup>3</sup>	4.2 t	clinker	1.5 t/m <sup>3</sup>	45 s 80.0 cycles/h	540.0 t/h	100.0 %	11.0 t

**We offer solutions, not machines !**

- Customised consultancy
- Cooperation with special attachment suppliers
- Profitability studies

# MOVE BIG THINGS



FOLLOW US ON SOCIAL MEDIA!

