



GEBZE, TÜRKİYE



MALTA FREEPORT, MALTA



LISBON, PORTUGAL



PUERTO BOLÍVAR, ECUADOR

## PORTFOLIO PRESENTATION

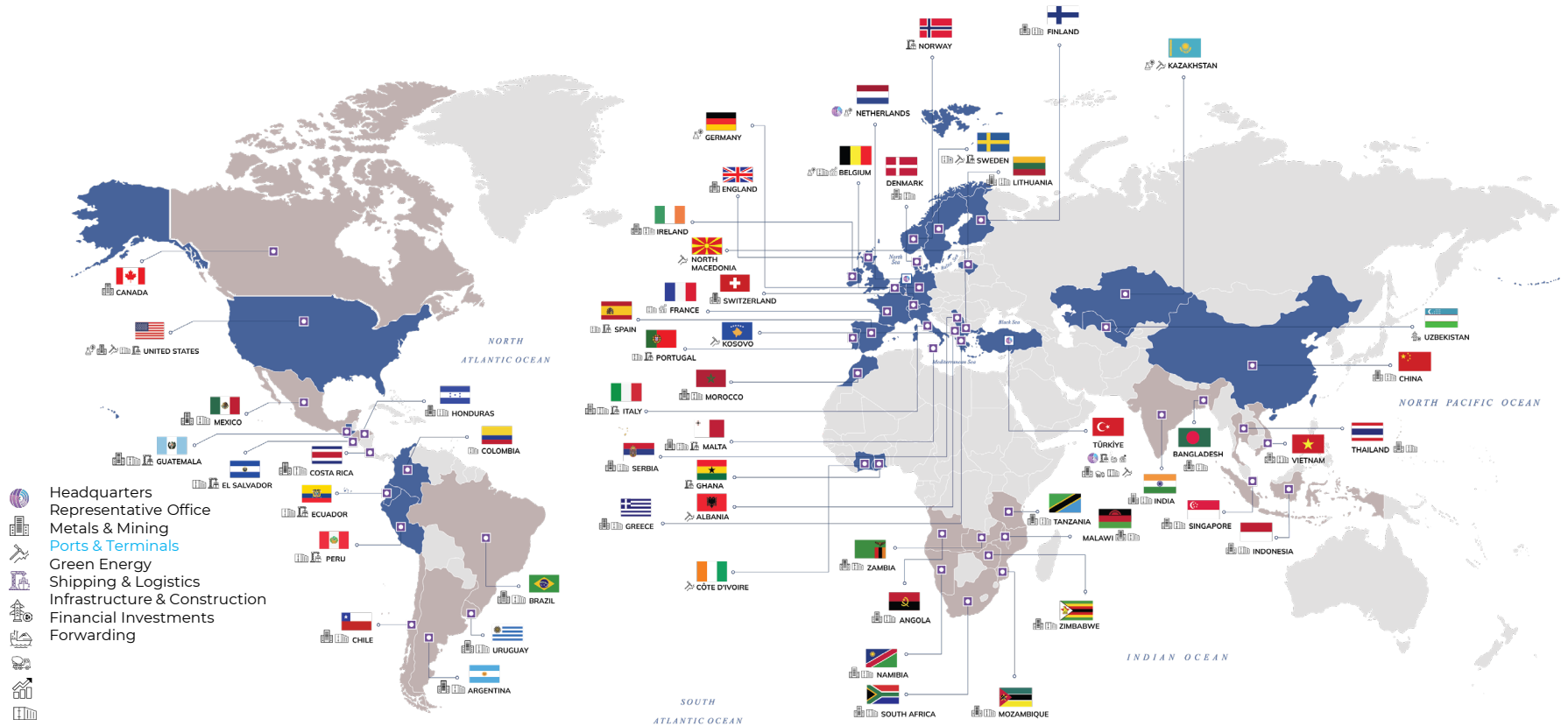
*GAME CHANGER IN PORT OPERATIONS  
& CONTAINER TERMINAL MANAGEMENT*

# YILPORT

**20K + EMPLOYEES  
IN 55 COUNTRIES ON 5 CONTINENTS**

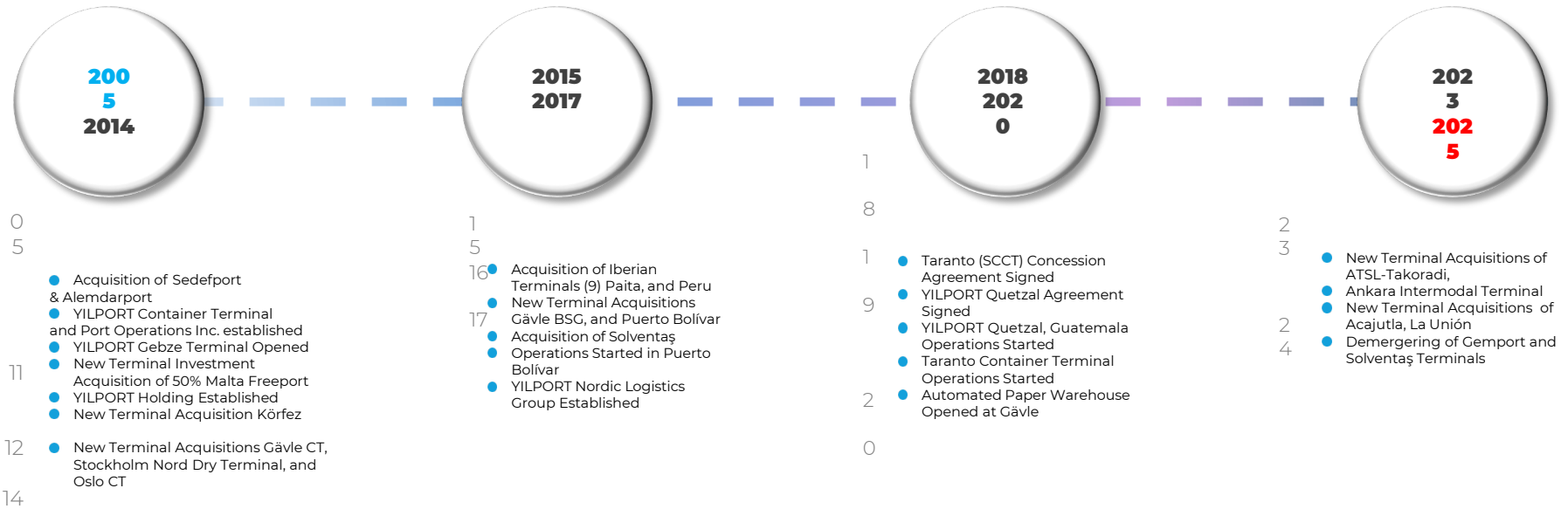
## GROUP PORTFOLIO

Industrial Conglomerate with a Growing Global Footprint

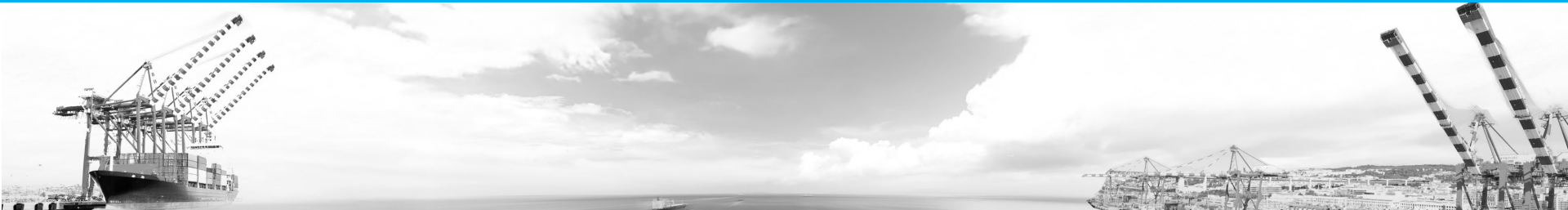


# YILPORT HOLDING TIMELINE

## 20 Years of YILPORT's Strategic Growth Milestones



CoreX Ports and Terminals, as a subsidiary of CoreX Holding, benefits globally diversified industrial knowledge and experience of YILPORT



## YILPORT HOLDING GLOBAL PRESENCE

YILPORT - 10<sup>th</sup> Largest International Container Terminal Operator  
(Equity based throughput league table - Drewry 2024)



**12**  
Countries  
**22**  
Marine  
**5**  
Dry Terminals

CONSOLIDATED  
CAPACITIES

**16.4 M**  
Container TEU

**70.5 M**  
General C. TON

**1.8M<sup>3</sup>**  
Liquid TON

**2.25 M**  
Ro-Ro CEU

# YILPORT PROVIDES ONE-STOP-SHOP SERVICES

## LOGISTICS & FORWARDING

- Freight Forwarding
  - Trucking
  - Rail
  - Feeder
- Combined Services

## COMBI & INLAND

- Empty Depot (sweeping, repair, washing and etc.)
- Storage (bonded, temporary bonded, open, closed)
- Special yards (mineral, marble, tiles)

## LIQUID

- Vessel Operations
- Liquid to Container
- Transfer from Container to Tank
- Blending and Marking

## RO-RO

- Vessel Operations
- Inspection
- PDI
- Touch-up

## GENERAL BULK

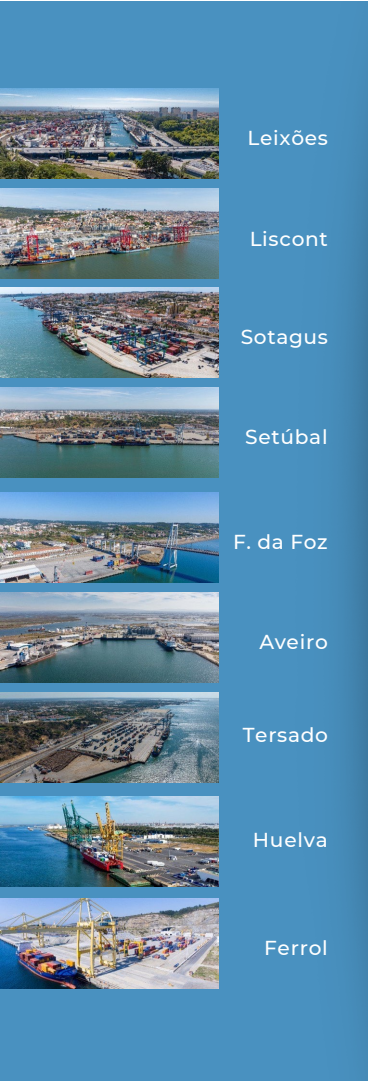
- Vessel Operations
- G.C./Bulk to Container Project
- Lashing - Blending - Fumigation

## CONTAINER

- Vessel Operations
- Yard Operations
- CFS (Stuffing, stripping, inspection)
- Reefer services
- IMO Services

## TUGBOAT & PILOTAGE

- Maneuvering
- Tugboat
- Pilotage



# YILPORT IBERIA

Located on the Iberian Peninsula, YILPORT Iberia presents the best solutions among its multipurpose peers. The terminals are located in Portugal and Spain, offering easy access to railroads, highways, and terminals that are close to industrial zones.

Leixões, Liscont, Sotagus, Setúbal, Figueira da Foz, Aveiro, Tersado, Huelva, and Ferrol Terminals deliver bonded and non-bonded areas and warehouses supported by logistics services.

From beginning to end, YILPORT Iberia terminals provide entire import and export operations 24/7 with a long-term know-how discipline of YILPORT.



**Container**  
Capacity  
**4,100.000**  
TEUs



**General Cargo**  
Capacity  
**17,500.000**  
TONs



**Ro-Ro**  
Capacity  
**300,000**  
CEUs

# Decarbonization Roadmap in YILPORT



**Interim Measure:**  
Biodiesel at  
YILPORT Gävle.

## Electrification Progress



Vertical equipment modernized. Acquisitions in Ghana & El Salvador.

## Fleet Transition



Diesel to Electric & Hybrid fleet transition.

## Renewable Integration



Developing solar and wind power generation at terminals.

## Onshore Power (OPS)



Cold ironing & OPS rollout for cleaner port stays.

## Clean Energy Sourcing



100% renewable electricity supply via PPAs at selected locations.

# OPS = Onshore Power Supply

A Key Decarbonization Initiative: Cold Ironing



## Collaboration Framework



### Ship Owners & Operators

- Fleet OPS Lists: Assemble capable vessel registers.
- Conversions: Plan retrofits for efficiency (e.g., Wartsila).
- Agreements: Define connection fee structures.



### Port Authorities

- Boundaries & Power: Map constraints and requirements.
- Scheduling: Coordinate berthing for OPS access.
- Financials: Manage invoicing and carbon credits.



### Electricity Suppliers

- Supply Contracts: Secure long-term dynamic pricing.
- Demand Profiles: Detail power needs and certification.
- Certification: Validate energy sources and certifications.

# Building a Sustainable Future

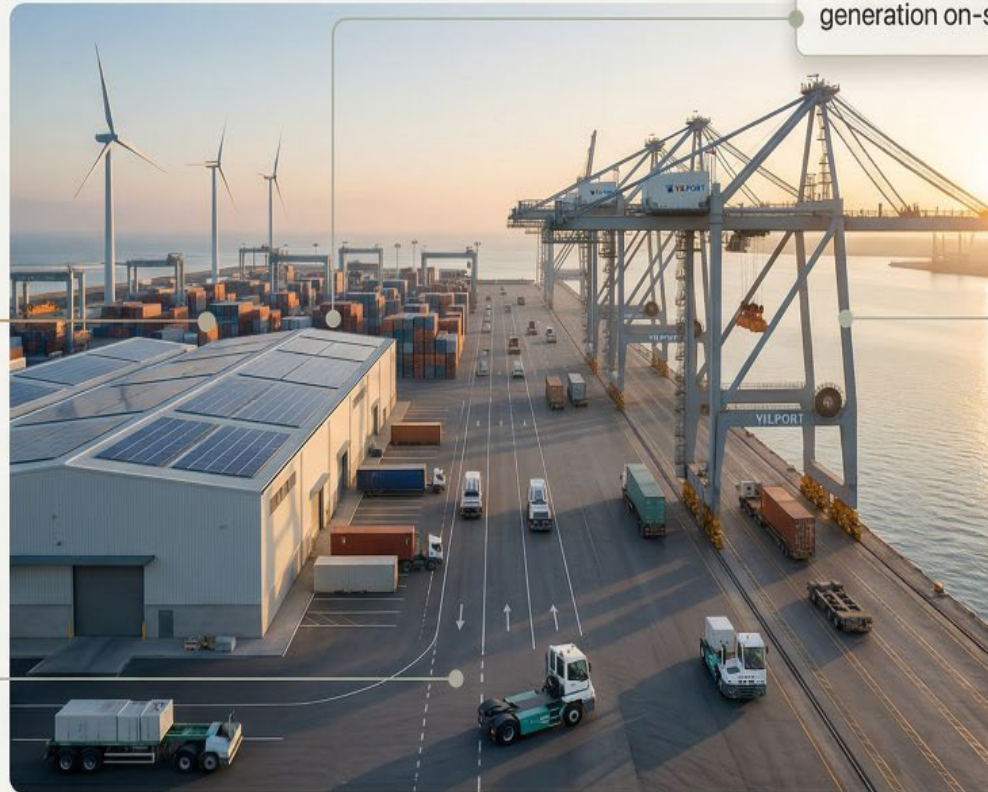


## Integrated Decarbonization Strategy

Synergy between electric tech and clean energy supply

## Stakeholder Collaboration

Partnerships for a sustainable maritime industry



## Renewable Energy Integration

Solar & Wind power generation on-site

## Port Electrification

Transition to zero-emission equipment (Cranes, Vehicles)

POSITIONING YILPORT AS A **LEADER** IN GREEN PORT OPERATIONS AND DECARBONIZATION