



**Latest technologies which boost cargo handling operation.**

---

**LIEBHERR**

# Table of Contents

---

- **LIEBHERR Group & Port Equipment**
- **Grab optimization** with Smart Grip®
- **Boost speed** with Pactronic®
- **Advanced training** with LIEBHERR Simulator®
- **Success story** Mayotte Channel Gateway
- **Conclusion**

# LIEBHERR – a family business

Company founded in 1949 by Dr.-  
Ink. E.h. Hans Liebherr

> €8,8 billion turnover (2014), 41,000 employees  
130 companies worldwide.

> € 800 million invested into new developments (per year)



## LIEBHERR – Port Equipment

---





## LIEBHERR – Port Equipment

---



## LIEBHERR – Port Equipment





# LIEBHERR – Mobile harbour crane LHM - Container

---

Republic of South Africa



# LIEBHERR – Mobile harbour crane LHM - Container

Indonesia





# LIEBHERR – Mobile harbour crane LHM - Bulk

Turkey



# LIEBHERR – Mobile harbour crane LHM – Heavy Lift

Rostock





## Port Equipment – Material Handling Equipment

---





## LIEBHERR – **NEW** Reachstacker LRS 545 **presented at the TOC**



## *Technologies* – Smart Grip, Pactronic and Liebherr Simulator

Latest technologies which boost cargo handling operation.

### **Smart Grip®**

Grab optimization



### **Pactronic®**

Energy accumulator – Double lifting speed



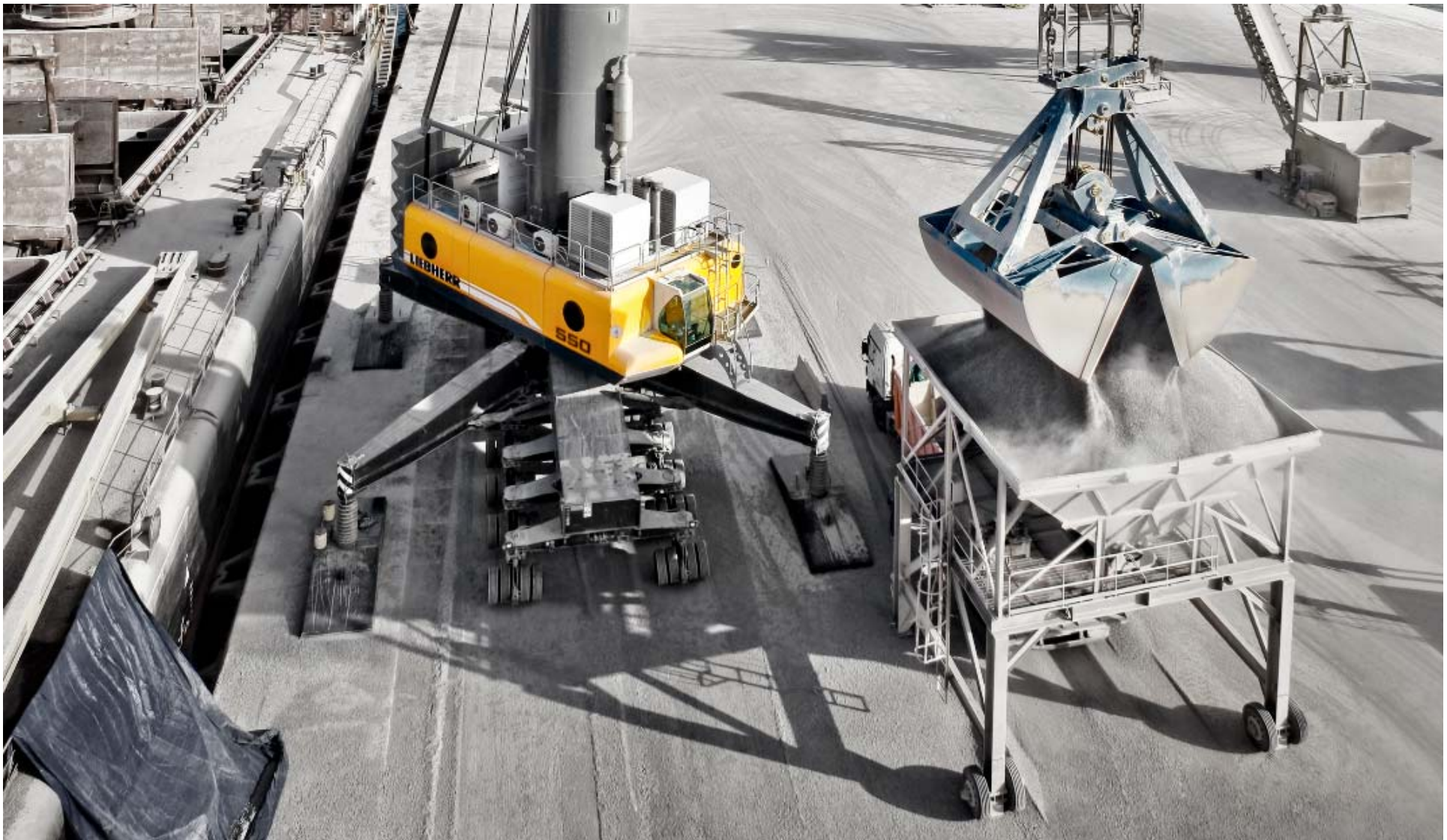
### **LIEBHERR Simulator®**

Give advanced driver skills





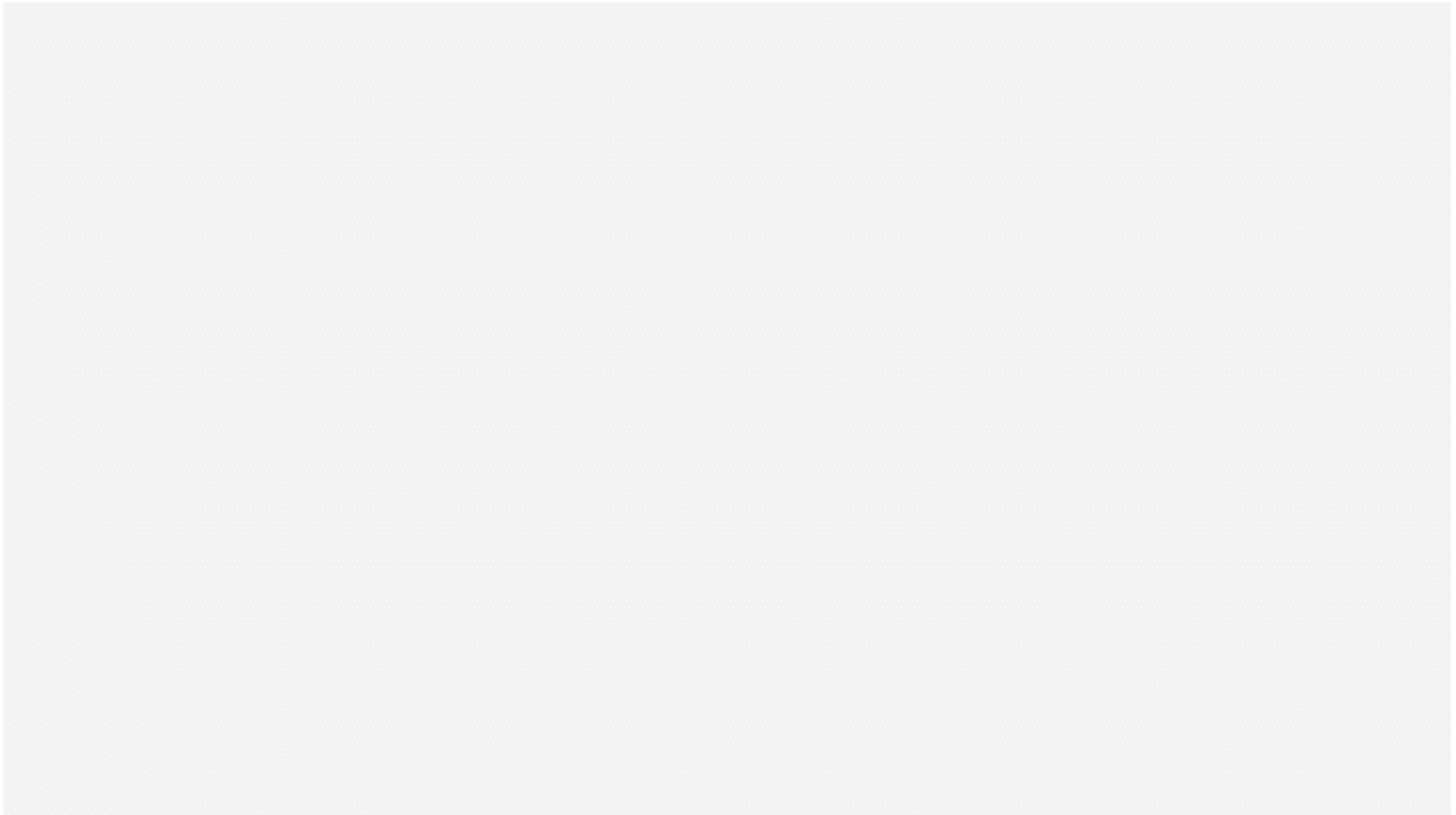
## SMART GRIP – Grab optimization





## SMART GRIP – Grab optimization

---



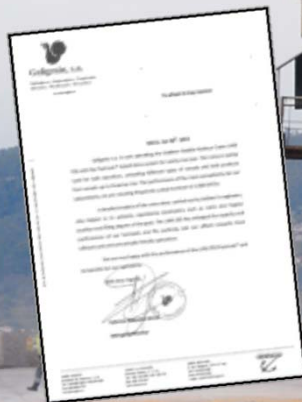
## Practical result – on a LHM 550

“... we are reaching frequently a peak turnover of 1.800 t/hour... „

Bulk  
Cereals

45 m<sup>3</sup>  
Grab

Slewing  
angle 120°



## PACTRONIC – Mobile harbour crane LHM

---





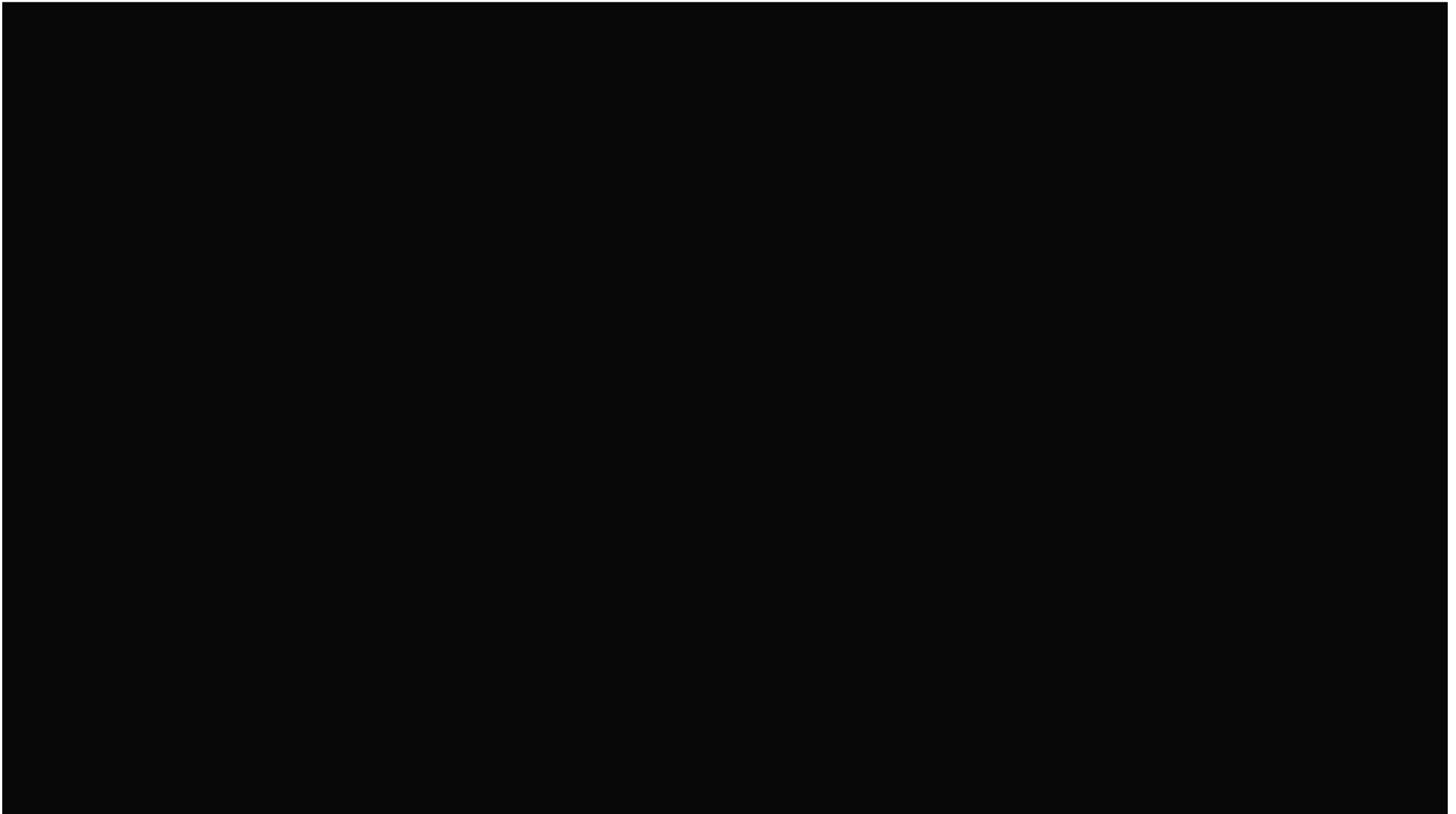
## BOOST SPEED – with Pactronic®

---



## BOOST SPEED – with Pactronic®

---



## Liebherr Simulator– Advance training

---





## Solutions – classroom

Fit a training center

High definition flat  
screen monitor

Sonore effects

Motions platforms  
and engines

**LIEBHERR**

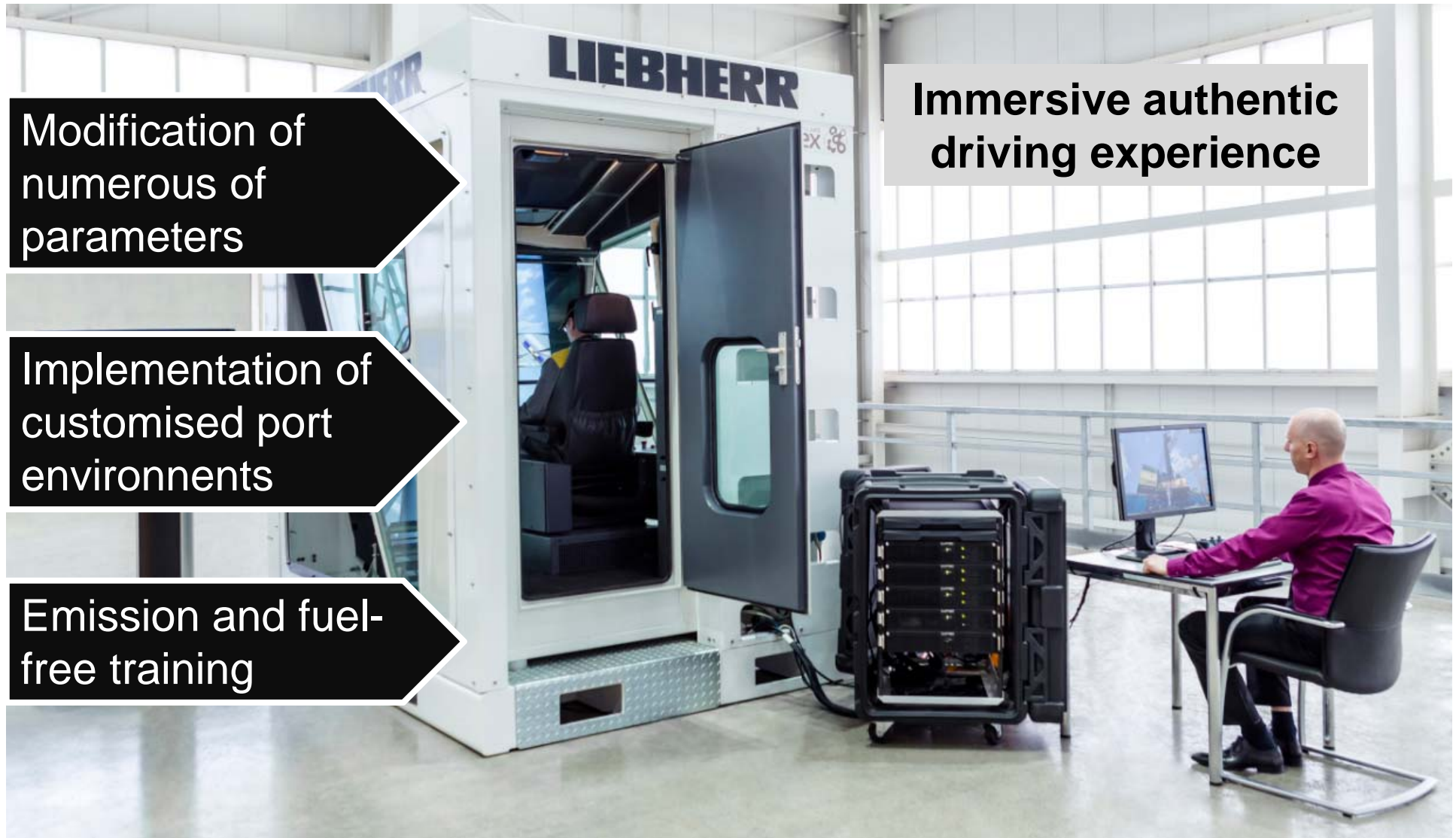
## Solutions – Cabin

Modification of  
numerous of  
parameters

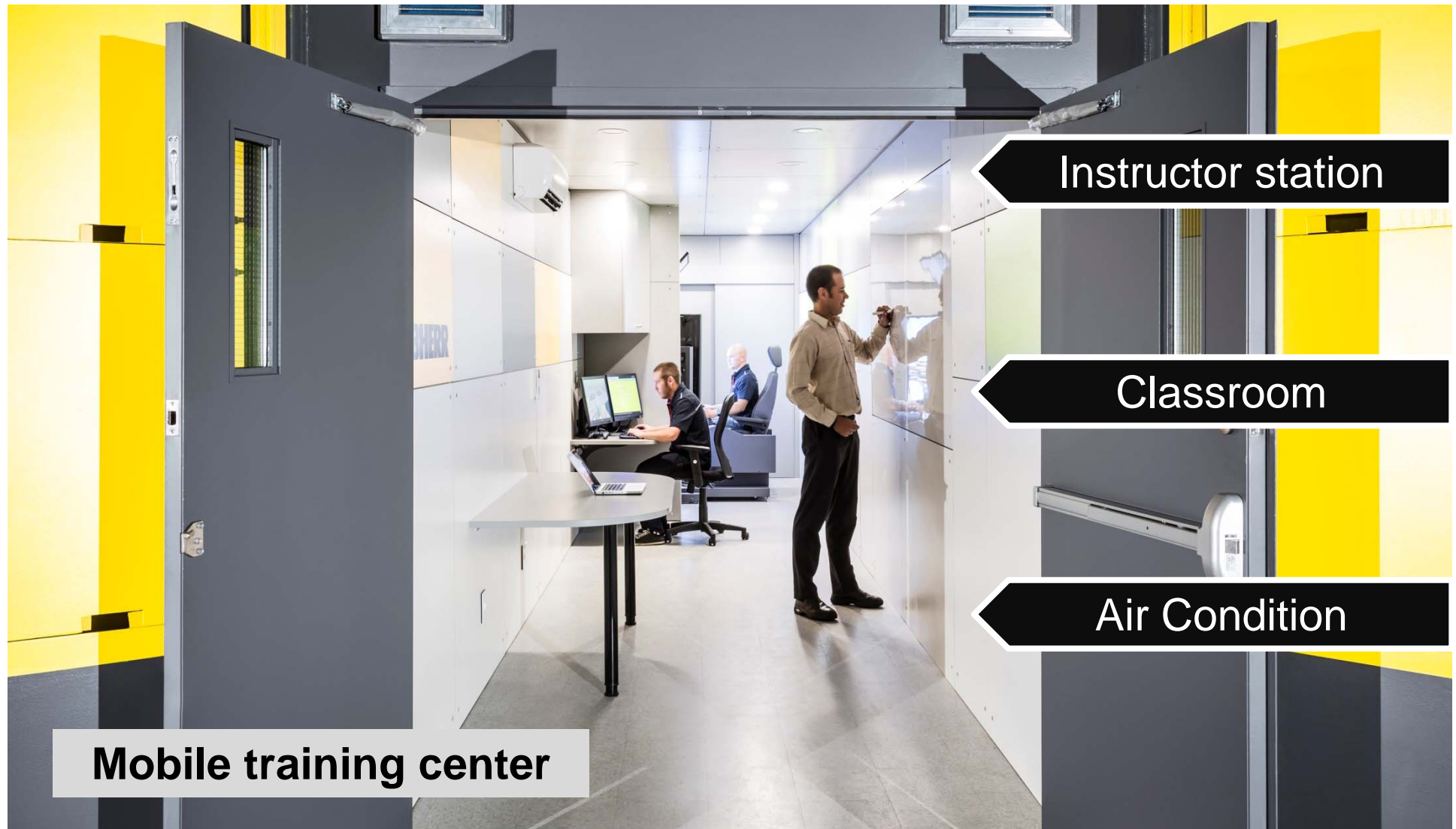
Implementation of  
customised port  
environnents

Emission and fuel-  
free training

Immersive authentic  
driving experience



## Solutions – Container.





# Track performance – Evaluating the progression



Data recording

Diagnostic

Reports & new  
exercises

Track the performance  
over time

Detect bottle necks,  
discover potential

Provide evaluation  
and solutions

# Safety– with LiSIM®



## Training with Simulator:

- ☐ No injuries to port personnel
- ☐ No equipment damage
- ☐ Does not interfere with operation
- ☐ Simulate challenging environmental conditions
- ☐ Teach them how to react to unexpected situations



# Productivity increase – with Liebherr Simulator®

Refresh drivers skills



13% more turnover

# LiSIM Liebherr Simulator – Advanced training

---

**Classroom**



**Cabin**



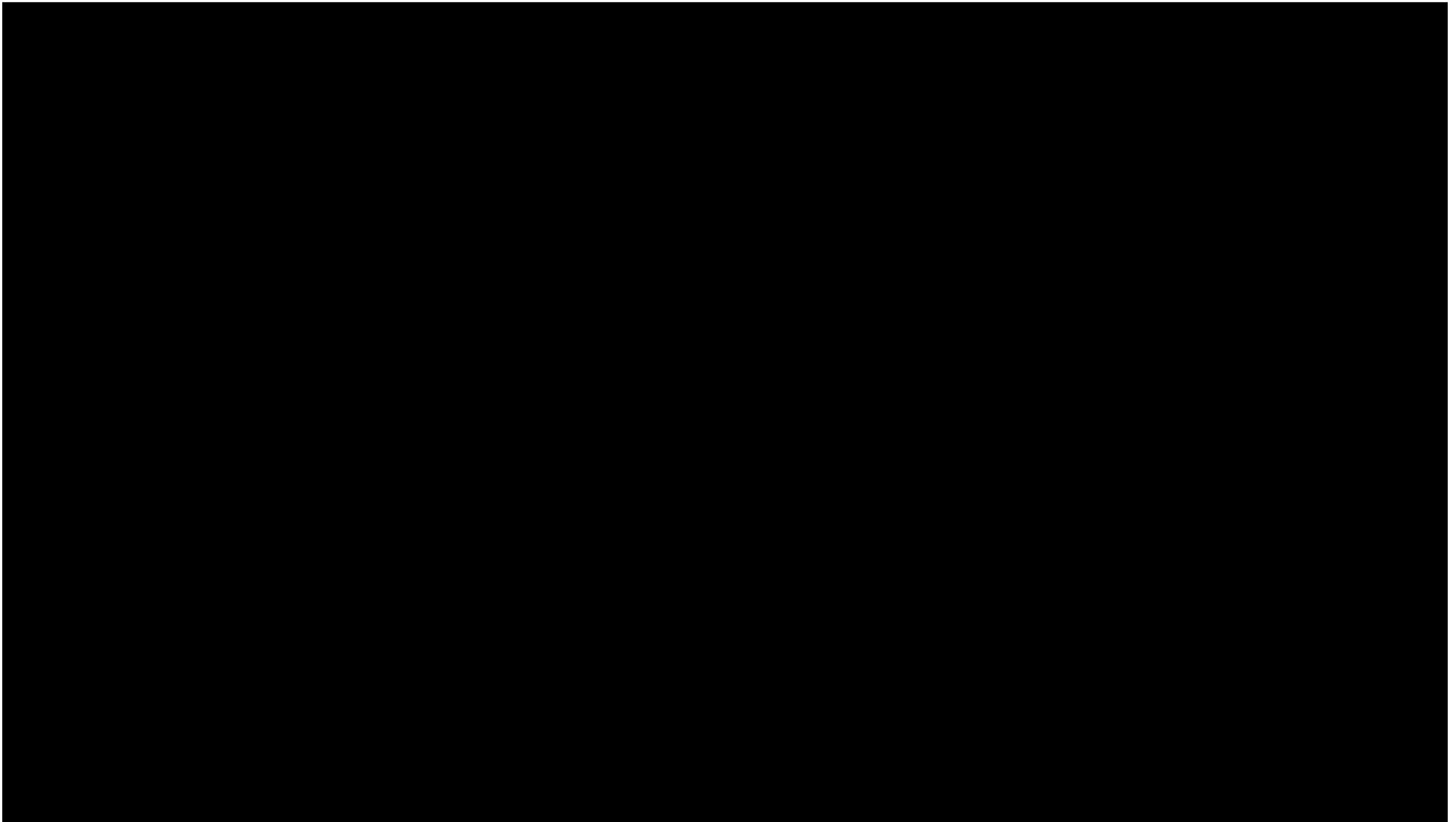
**Container**





## Mayotte chanel Gateway– Success story

---



# Thank you for your attention

---

**Anthony MARTIN-GARIN**

**Liebherr-Werk Nenzing GmbH**

Tel.: +43 50 80 94 13 42

Anthony.MartinGarin@liebherr.com

**STAND N°8**

