

New Transit Hub

In the
Baltic Basin

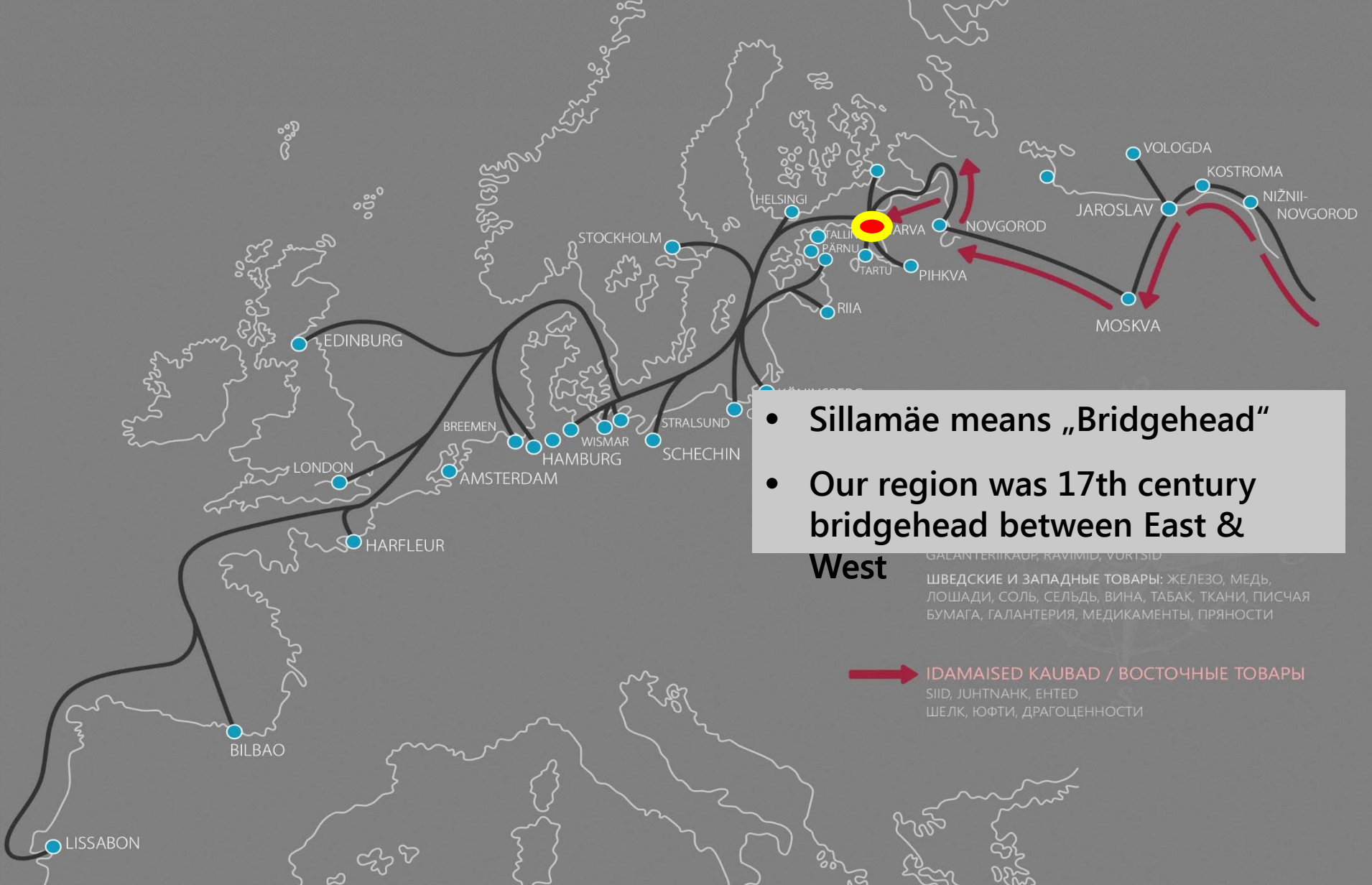
Mr. Lauri Karp
September, 2017



SILPORT
Port of Sillamäe

<http://www.silport.ee>

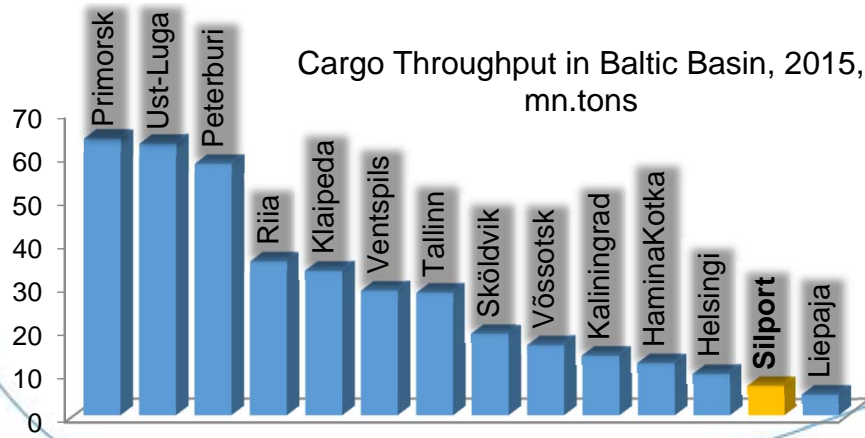
Reason to build a port: Historic Hub



Reason to build a port: Cargo Traffic



- ✓ 500m tons east-west sea cargo
 - by 2030 +120mn. tons
- ✓ Baltic Basin - cargo gateway to Russia
- ✓ 50% of Russian Container Traffic
- ✓ Close to regional industry
 - Leningrad oblast and Moscow
 - Finland, Sweden

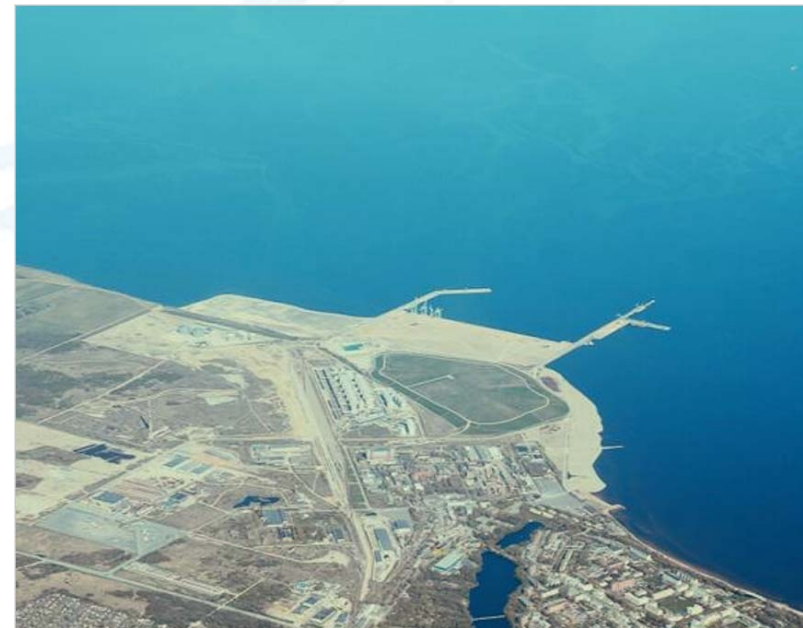


Reason to build a port: Superb Location

1997



15 years later



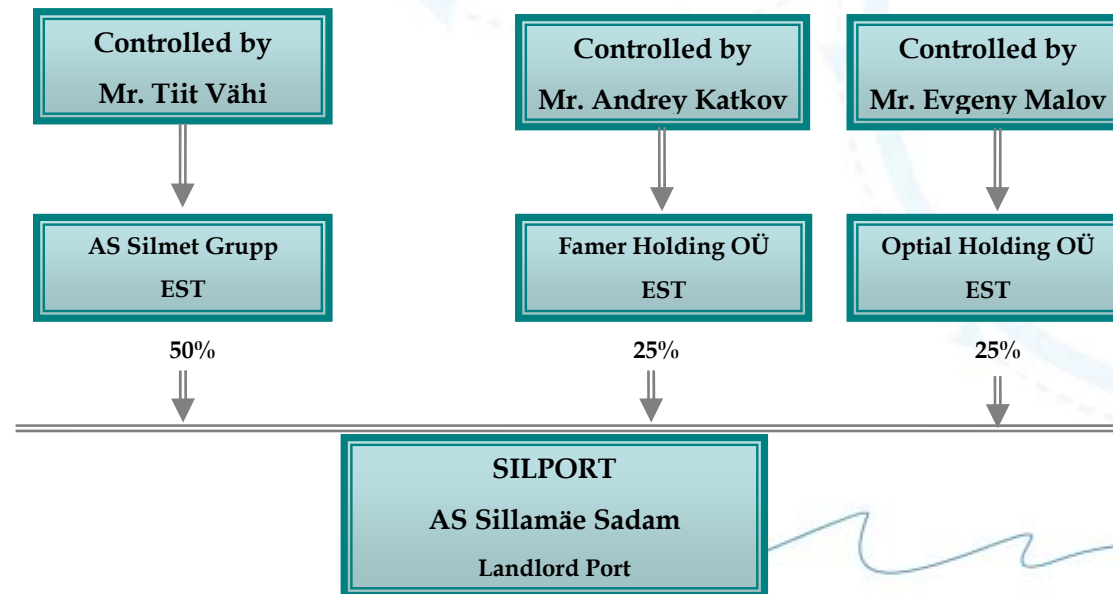
About Private Landlord SILPORT

- ✓ New private freeport at the crossing of EU and Russia/CIS
- ✓ 25 km from Russia on a 7.5km² private territory (port 6.5km²)
- ✓ Category „A“ EU port (TEN-T), commenced 2006
- ✓ Depth up to 16 m and navigable 365 days
- ✓ 7 mn. tons, focus on bulk and liquid cargo
- ✓ Current sea-side infrastructure completed for 30 mn. tons



SILPORT- Ownership Structure

- ✓ AS Sillamäe Sadam (Ger: Silport AG) is private non-listed company in Estonia
- ✓ In joint role as private landlord and (private) Port Authority





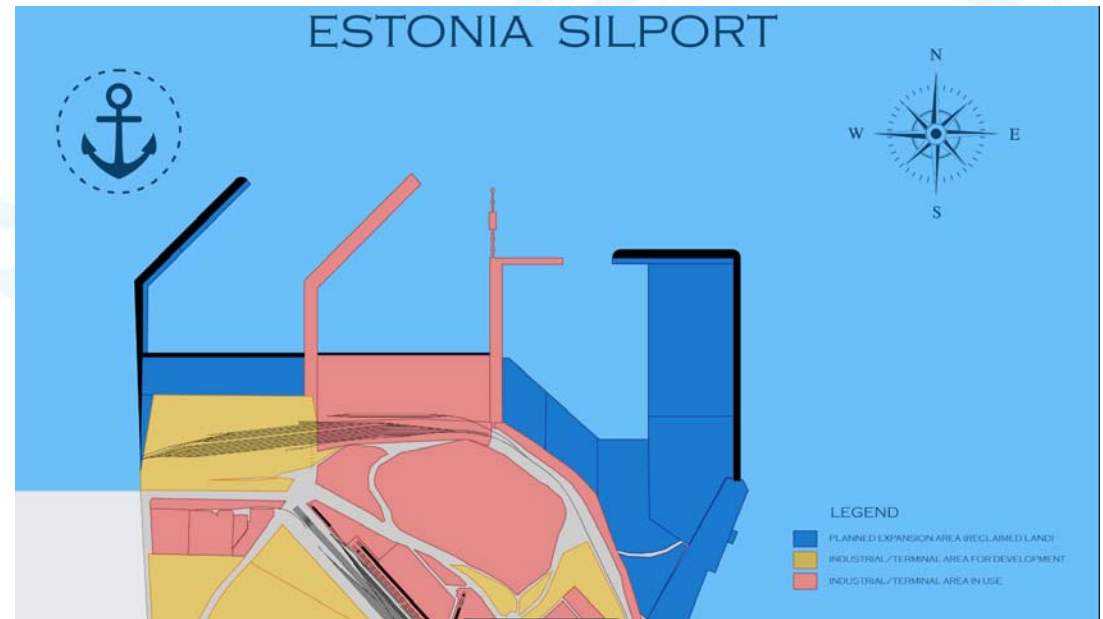
Port Infrastructure

Port Infrastructure

QUAYS (EXISTING)

In total 3km quays operational
Masterplan foresees 9km quays

2 oil products	16m deep
3 liquid chemicals	13m deep
4 ro-ro ramps	12m deep
6 container & general cargo	-15,5m deep



Port Infrastructure Rail&Roads



Silport upper railway station

ROADS

Direct access to highways to St. Petersburg & Moscow

Network of intra-roads with total length of 11 km

RAILWAY

Direct (4,6km) access to Tallinn – St.Petersburg rail line

Silport Upper Railway Station: 14 tracks

Silport Lower Railway Station:

Current railway capacity: 12mn. tons



Terminals in SILPORT

EUROCHEM (dedicated)

- Liquid chemicals
- Metanol
- Acids

BCT/ACRON (dedicated)

- Liquid ammonia
- Liquid fertilizers (UAN)

ALEXELA/TRAFIGURA (dedicated)

- Heavy oil products
- Local Shale Oil

SILSTEVE (independent)

- General and Project Cargo
- Warehousing
- Container
- Ro-Ro



Dry Port Concept in Sillamäe

Freezone-to-Truckstop with online reservation system for smoother hinterland border crossing

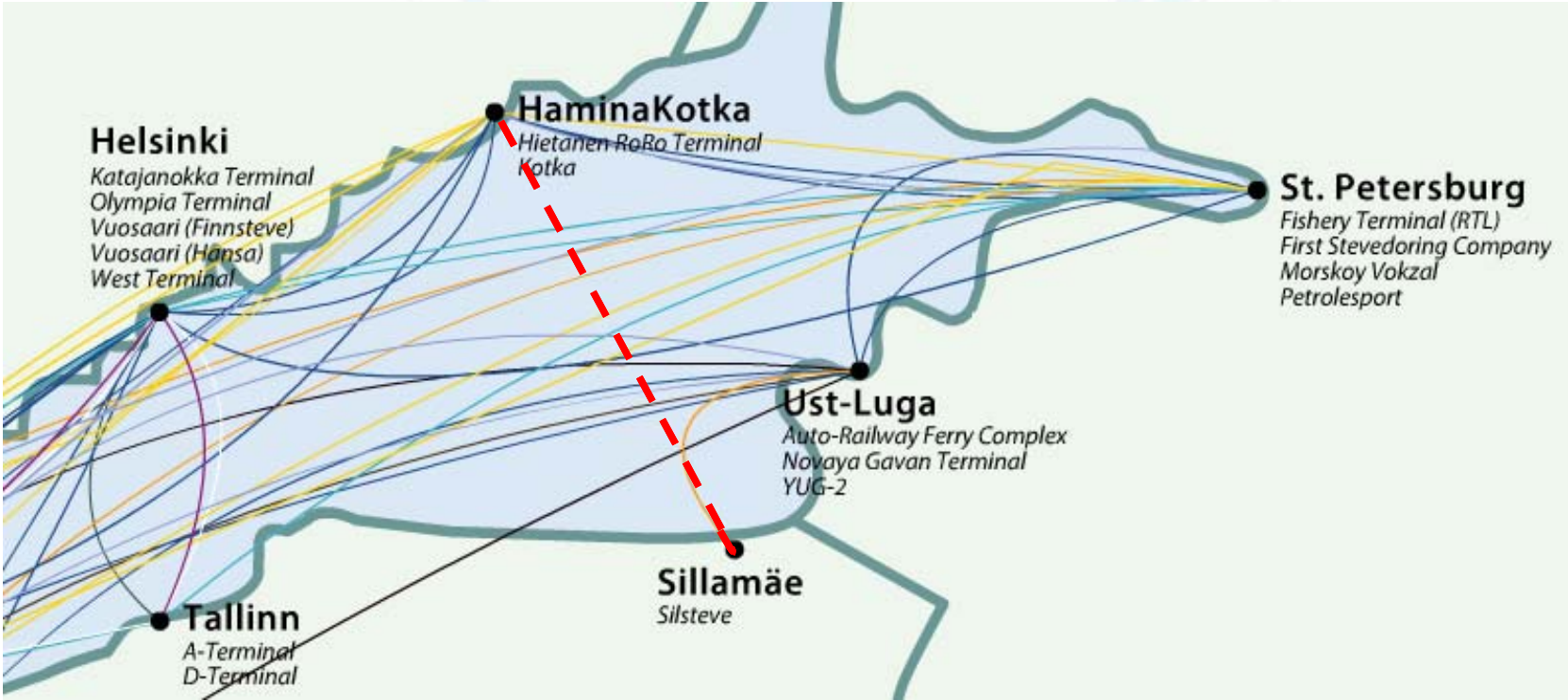
Sillamäe TruckStop

is today a guarded over 10ha large area for 450 trucks with customs services incl. Russian insurance and taxes. It will be expanded to a true intermodal hinterland servicing gateway ("dry port") in the future. Green line for AOE-certified transportation



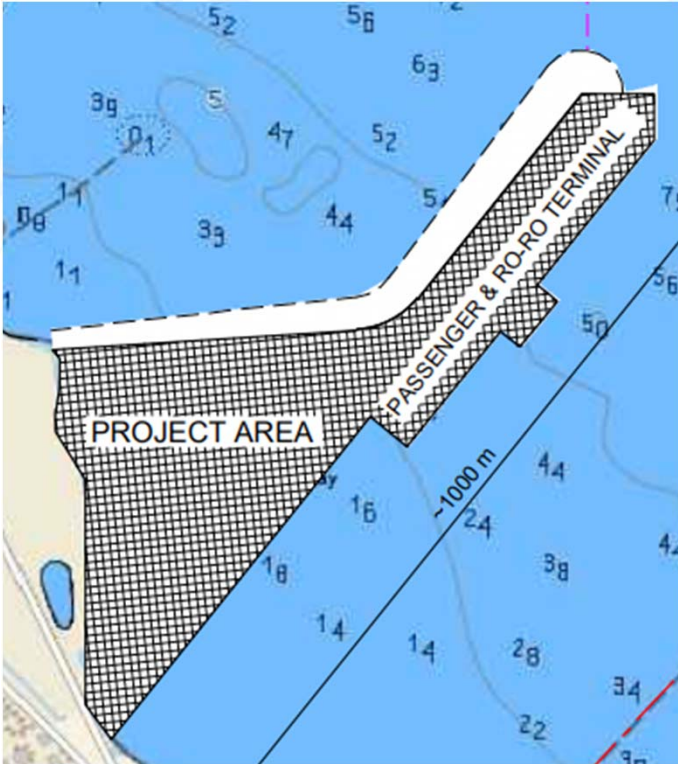
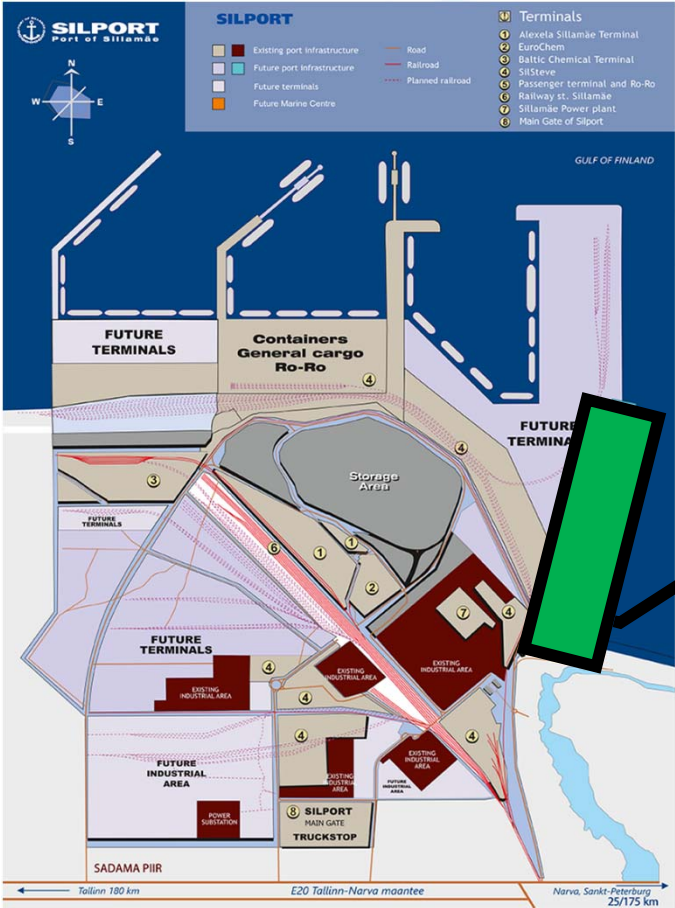
Reason to build a port: Potential

Ro-Ro line connecting industrial regions across the bay



Reason to build a port: Tourism

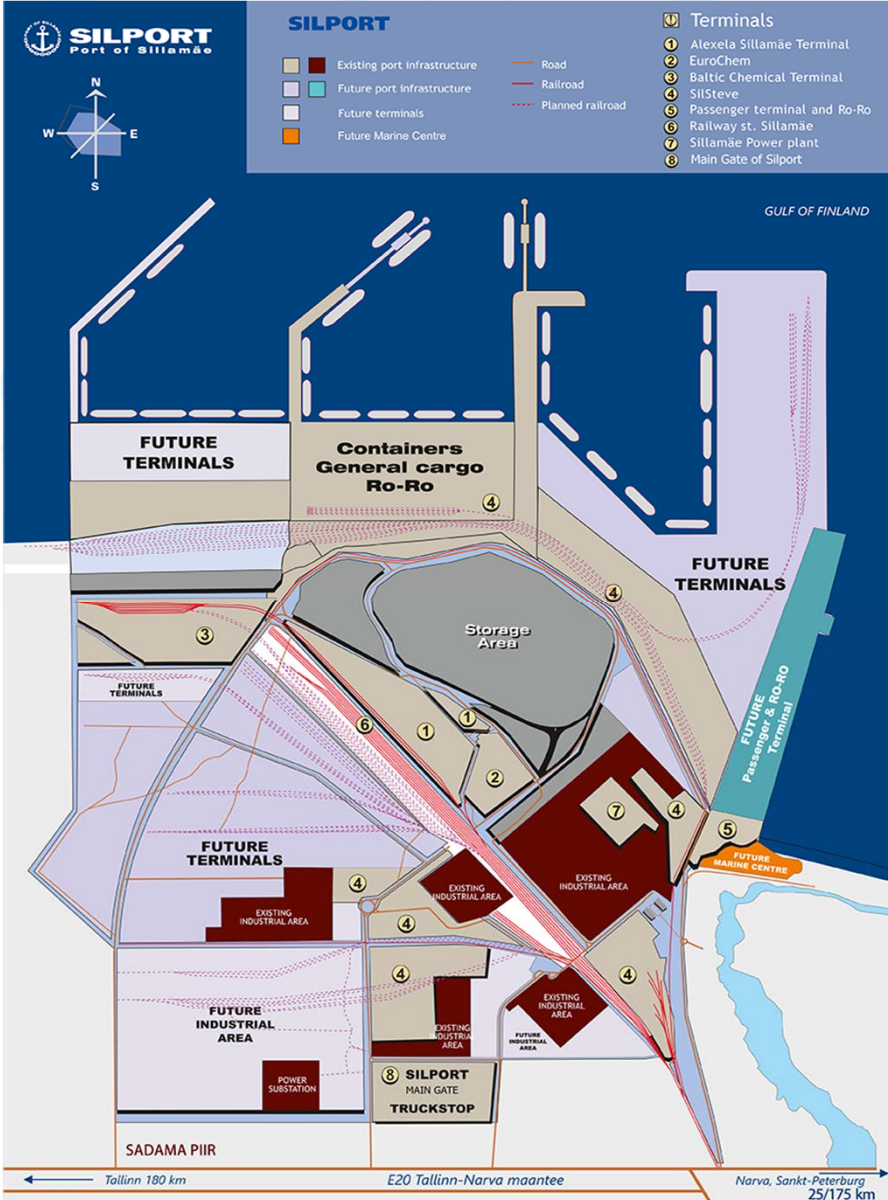
Ida-Virya region as emerging tourism destination



SILPORT
Port of Sillamäe

Reason to build a port: Potential, cont.

- ✓ Chemical industry value-added
 - Factory
 - Mid-sized oil refinery
- ✓ New cargo delivery modes
- ✓ Partnerships along „Silk Road“
- ✓ Digital Hub & Innovation
 - DLT
 - Smart Automation via AI/ML





SILPORT
Port of Sillamäe



SILPORT Pre-Customs Hub



SILPORT
Port of Sillamäe



Contact Information

AS SILLAMÄE SADAM

Suur-Karja 5
10140 Tallinn, Estonia

Phone: +372 50 56841
l.karp@silport.ee



SILPORT
Port of Sillamäe