

PORT OF  TALLINN

The Port of Good News

Port of Tallinn:
**Estonia's Biggest
Maritime Gateway**
*Going Smart
& Digital*

Valdo Kalm

Chairman of the Management Board

Port of Tallinn



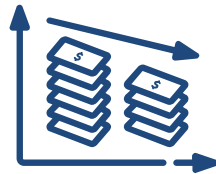
Industry Dynamics

MEGATRENDS

Larger Vessels



Cost Pressure



Technology and automation



Environmental Regulation



Security of borders and assets



Safety of personnel



Productivity and throughput



Automation and process efficiency



Collaboration with stakeholders



real time voice & data Connectivity



Environment monitoring & Reporting



Customer Experience

A smart port is

AUTOMATED and DIGITAL

Fully automated operation from STS Cranes to AGV, using big data

LEARNING

Capture of data for analytics and predictive modelling

EFFICIENT

Optimised Port Of Call process coordinated with inland transport



SUSTAINABLE

Use of renewable energy
Network of sensors to monitor environmental health.

INTEGRATED

Collaborative Decision Making based on single source of information

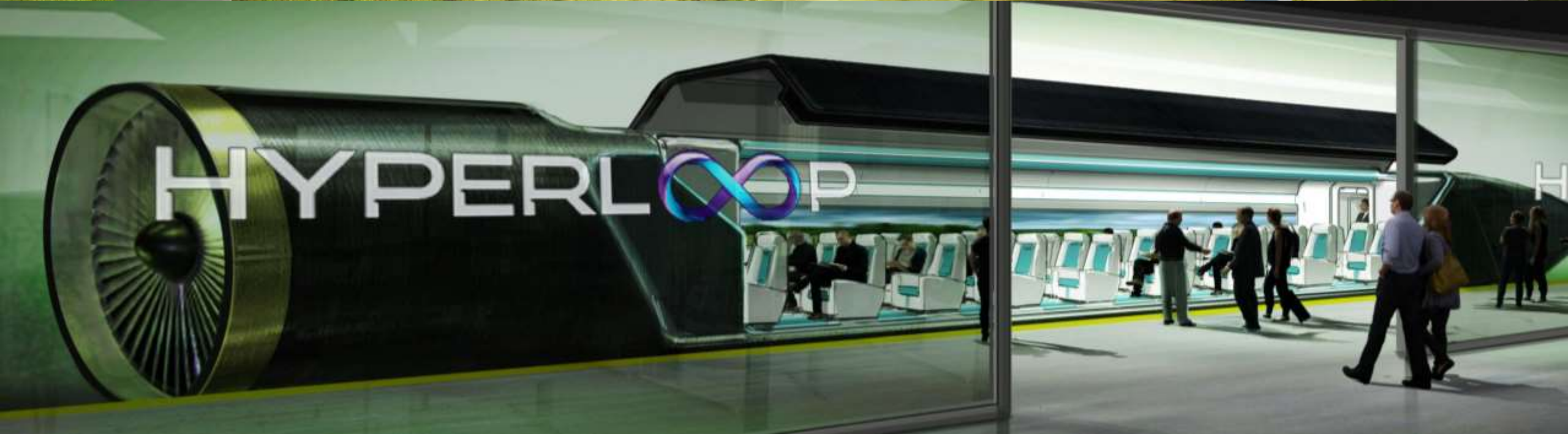
SECURE

Coastal/border security
Cyber security

Maritime ICT cloud



Logistics + 1 = Logistics 5.0 =
Hyperloop





Our VISION:

To become *the most innovative port on the shores of the Baltic Sea* by offering its customers the best *environment* and *development opportunities*.

PORT OF TALLINN

Business Fields



Passengers

*10 mil
passengers
a year*



Cargo

*20 mil tons
a year*



Real Estate

*Industrial parks 86 ha
Old City Harbour 50 ha*



Shipping

*Ferry shipping -
2 mil passengers
a year;
Ice-breaker Botnica*

PORT OF  TALLINN

HARBOURS

FROM CARGO TO CRUISE



Saaremaa
Harbour

Tallinn

Muuga Harbour

Old City Harbour

Old City Marina

Paljassaare Harbour

Paldiski South Harbour

Old City Harbour

Estonia's Biggest Tourism Gateway

TERRITORY	54.2 ha
AQUATORY	75.9 ha
TOTAL LENGTH OF BERTHS	5 km
NUMBER OF BERTHS	25
MAX. DEPTH	10.7 m
MAX. LENGTH OF A VESSEL	340+ m

Passengers (ferries, cruises, yachts), Ro-Ro

Ferry lines



from Old City Harbour

- 2h trip to Helsinki
- Mini-cruise to Stockholm
- 72h visa-free visit to St. Petersburg





SMART PORT Project in Old City Harbour

- **A traffic flow management solution** organizing pre check-in, check-in and line management **for ports** with multiple **ferry operators** by providing holistic and easy to understand service for **people** with trucks and cars.
- Improving passenger **experience** and reducing **environmental impact**.
- Developed in cooperation with:
 
- **Tight cooperation with ferry operators** – Tallink, Viking Line, Eckerö Line, Moby SPL and with **ports** of Kristiansand, Helsinki, Stockholm and other neighbouring ports.



Smart *Port*

Smart Port solution has 3 key components:

1. **Communication** with various **systems** (ferry operators, customs, etc)
2. **Customer experience management**
(online pre-registration, check-in procedures, traffic lane management)
3. **Hardware automation**
(gates' management, number plate recognition, traffic sign control, automatic vehicle dimension validation against pre-registration information)





Co-financed by the European Union
Connecting Europe Facility

Smart Port Project

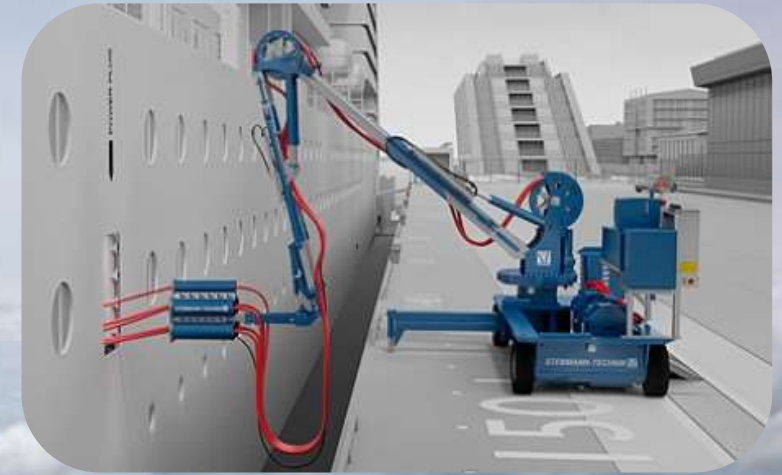
First of the Kind

in the Region!



OPS and automooring

- **On-shore power supply** – cooperation with the **Port of Helsinki, Port of Turku and Ports of Stockholm** to agree to provide in all their ports **on-shore power supply for 11kV** for Ro-Pax vessels.
- **Automooring** – quick, efficient and safe



One vision of *Masterplan 2030*



Streamcity

Zaha Hadid Architects



Streamcity

Zaha Hadid Architects



PORT OF
TALLINN



PALDISKI *SOUTH HARBOUR*

Estonia's Main Ro-Ro Harbour

*Ro-Ro, general cargo,
solid bulk, liquid bulk*

TERRITORY	114.7 ha
AQUATORY	134,5 ha
TOTAL LENGTH OF BERTHS	1,85 km
NUMBER OF BERTHS	10
MAX. DEPTH	14,5 m
MAX. LENGTH OF A VESSEL	230 m

PORT OF
TALLINN



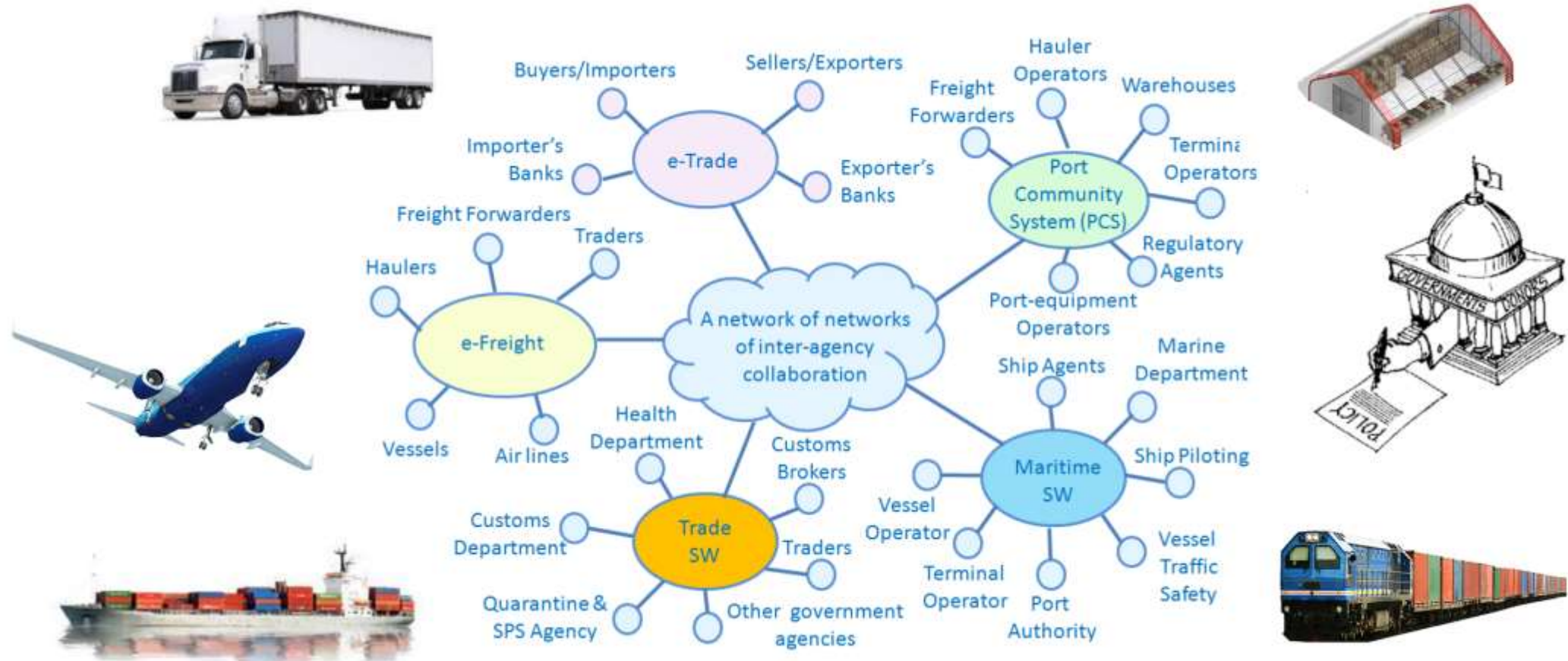
MUUGA HARBOUR

Estonia's Biggest Cargo Harbour

TERRITORY	524.2 ha
AQUATORY	752 ha
TOTAL LENGTH OF BERTHS	6.4 km
NUMBER OF BERTHS	29
MAX. DEPTH	18 m
MAX. LENGTH OF A VESSEL	300+ m

Containers, liquid bulk, solid bulk, general cargo, Ro-Ro

Logistics and transport info X-Road: *Single Window*



- Members of the Estonian Logistics and Transit Association and Prolog (Estonian Purchasing and Supply Chain Management Association) are developing **a joint info platform for logistics and transport**

Port of Tallinn pilot-projects in 2017

cooperation in Single Window

- 1) **Digitalization of the logistic chain**– a joint information platform for cargo handling procedures and data processing by using the blockchain technology
- 1) **Queue Management Service** for trucks to manage the arrival of trucks entering the port through a *Just-In-Time* process based on a virtual queue concept



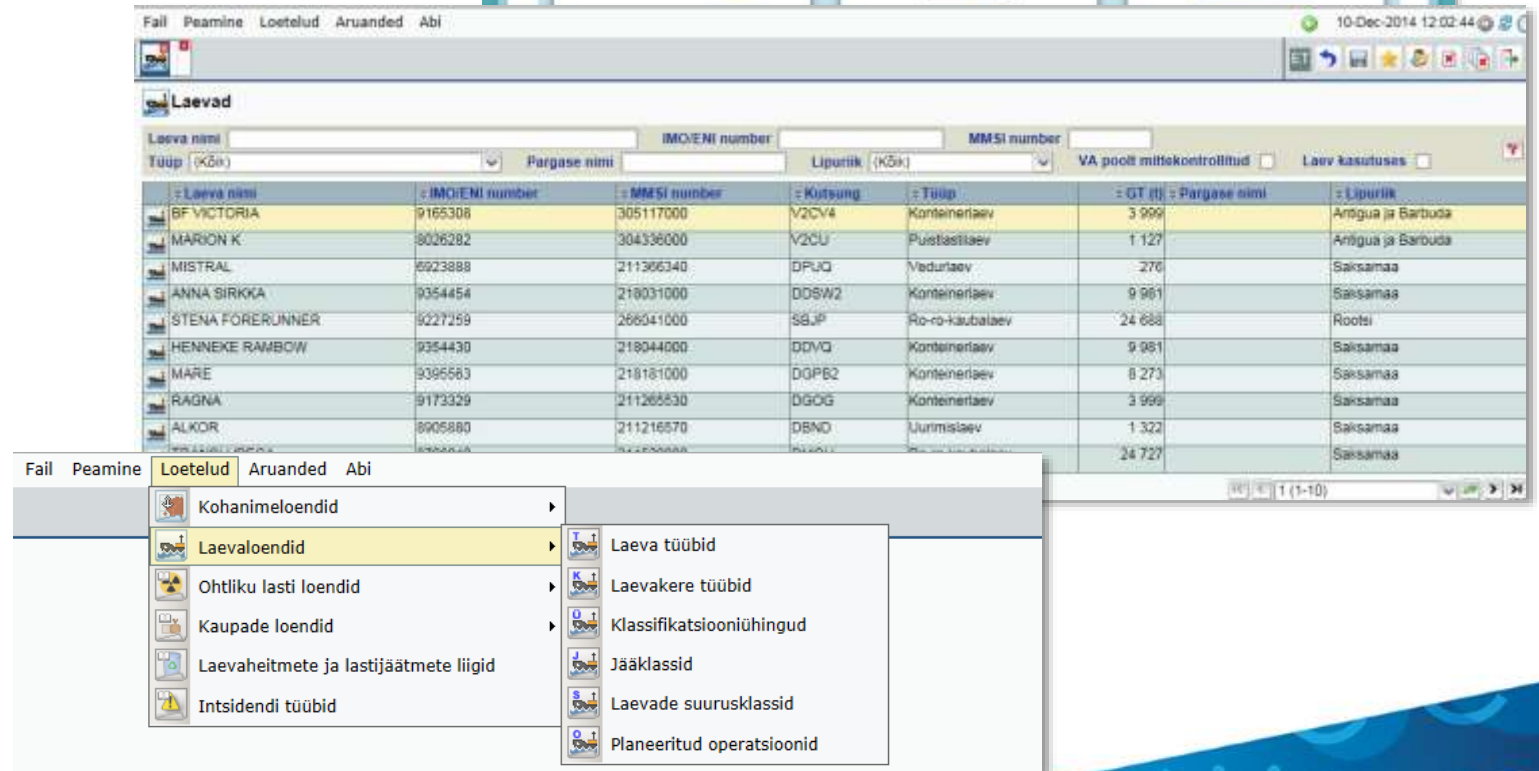
Blockchain *Project*

- A trial **paperless logistical platform**
- Enables **monitoring** of loading, customs processing and pre-shipment of **export containers in real time**
- Substantially reduces **paper consumption** and **bureaucracy**
- **Accelerates** all the processes
- Globally **unique** system



EMDE and *Single Window*

- EMDE (*Estonian Maritime Documents Exchange*) synchronization of data on ship visits and automatic transfer of uploaded documents to the port and relevant authorities
- Harbour Master's Department can carry out necessary EMDE procedures directly via the **Port Management Program FlexPort**
- Electronic data exchange works through **web solutions** and **XML-messages**. Also PDF-files are used as an alternative



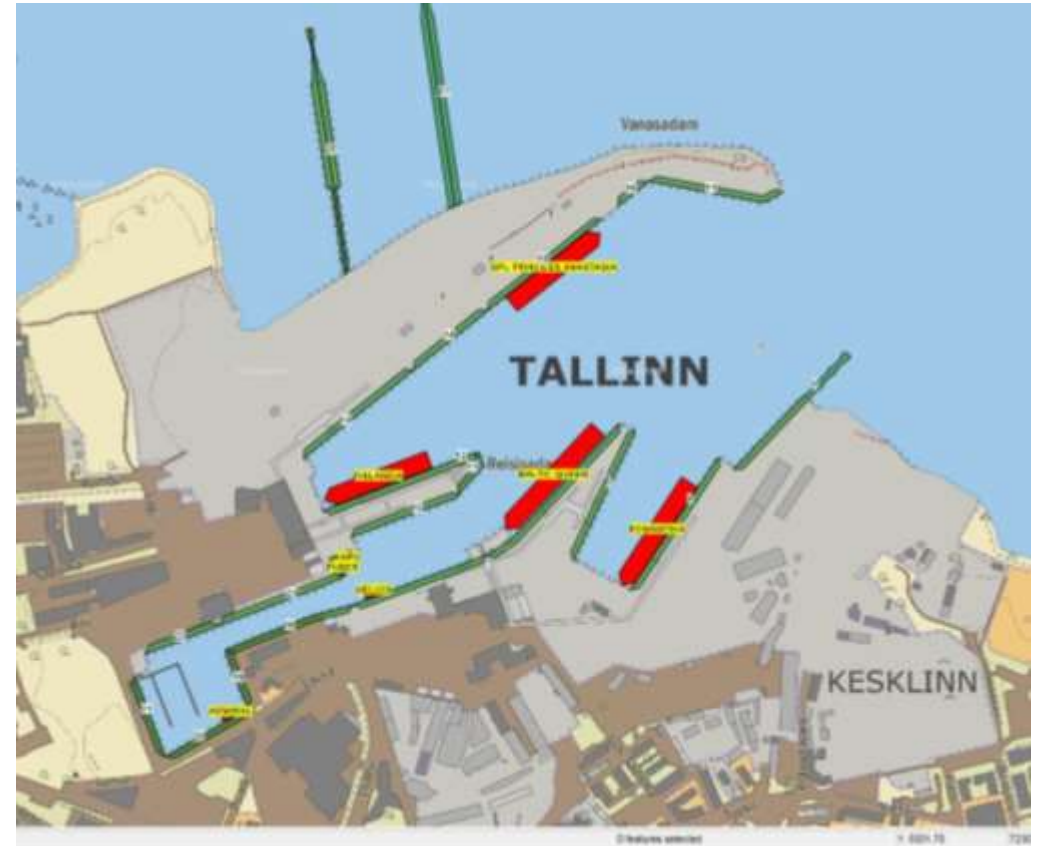
FlexPort

as Port of Tallinn's administration program

- From 2011 we use a port management program **FlexPort**, which is based on enterprise resource planning platform **Microsoft Dynamics AX 2009**
- Integrates **operational data** and **financial records**
- Due to integration of different data it's also possible to display **ships' graphic placement** in the port and get **weather extracts**

Also enables to:

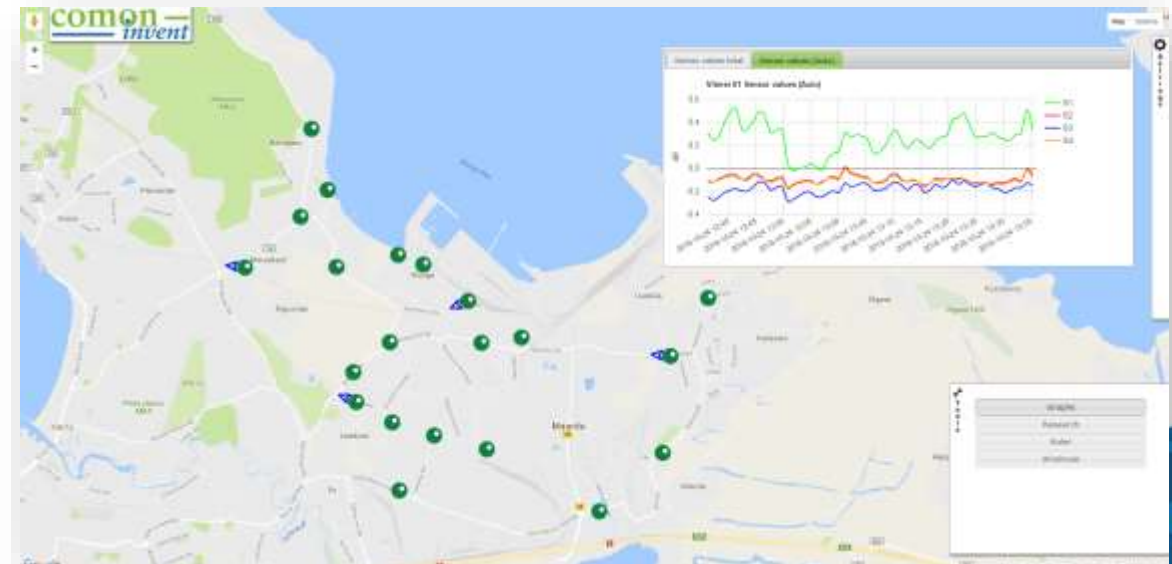
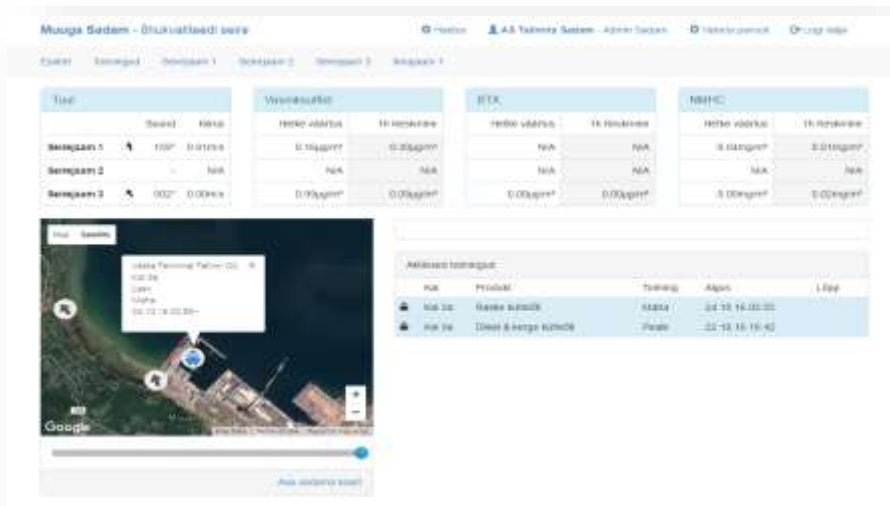
- Register **vessel calls** and their **operations**
- Upload relevant **documents to every call**
- Keep track on **handled goods** independently
- Calculate and issue **invoices**
- Get reports and **statistics**



MAIRIS / e-Nose system

Monitoring air quality & detecting anomalies

- **Reducing** the risk of **odour nuisance**
- **Detecting** anomalies in air composition caused by the presence of reactive trace gases
- Getting updated info about the sources of anomalies – **24/7 online data, 1 minute frequency**
- **Pilot project** – a Network of 20 eNoses



TALLINN

RAIL BALTIC CARGO TERMINAL



PORT OF
TALLINN



Rail Baltic Extension

To Finland & Central and Southern Europe



Muuga Harbour: *Smart Hub*

Muuga:

A Multimodal Transport Hub,
where **Smart Technology**,
different **Railroads** (1520 &
1435), **Land transport** and
Shipping

Meet
+ the Closeness
of Tallinn **Airport**

Port of Tallinn – New Approach

Initial Public Offering (IPO)

The owner of Port of Tallinn, the Government of the Republic of Estonia has decided to proceed with listing up to 30 percent of company's shares on the Estonian stock market.

Deadline: Listing shares on the stock market by the **end of the first half of 2018** at the latest.



Main purposes for the country:

- Getting as many local retail and institutional investors as possible
- Growing the liquidity and attractiveness of Nasdaq Tallinn
- Selling the shares with an optimal price = maximizing company's market capitalization
- Conducting IPO effectively and in due time



Main purposes for the company:

- Allowing for the company to focus more clearly on its business domains
- Improving the company's as well as Estonia's international reputation
- Becoming even more transparent



PORT OF  TALLINN
The Port of Good News

Thank You!

www.portoftallinn.com



ISO 9001
ISO 14001
BUREAU VERITAS
Certification

