

# Crane Upgrades a way to extend port cranes life



**Eduardo Prat** - Vice President EMEA South

14<sup>th</sup> Trans Middle East, Tehran, Iran  
24 & 25 January 2017



**Any Crane, Any Job,  
Anywhere**

## **Contents**

- Introduction to Kalmar
- What are Crane Upgrades
- Why to upgrade?
- Examples of crane upgrade projects
- Conclusions

## Kalmar – Making your every move count.

- Kalmar is part of Cargotec
- Cargotec is listed on the stock exchange with sales totaling EUR 3.729 million in 2015 and employs approximately 11.000 people.
- Approximately 5.300 people are employed in Kalmar Service Centers in more than 100 countries world wide
- Kalmar is market leader in container handling equipment, port automation and services with sales in 2015 of EUR 1.678 million





**One in four container movements around the globe is handled by a Kalmar solution.**

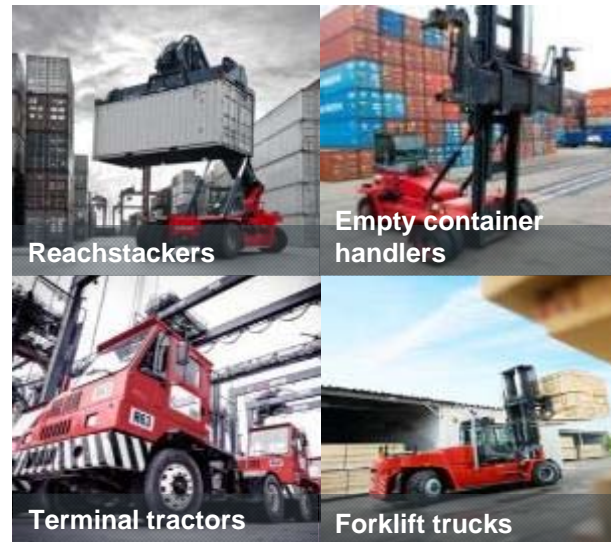


# Kalmar provides the market's widest product portfolio

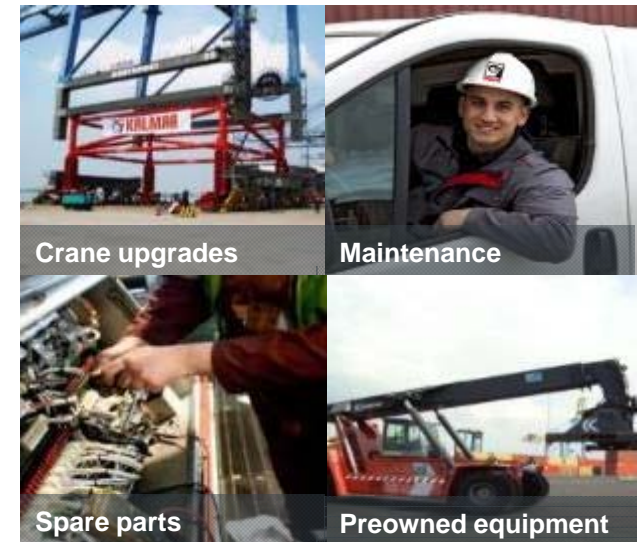
## Automation & Projects Division



## Mobile Equipment Division



## Services Division

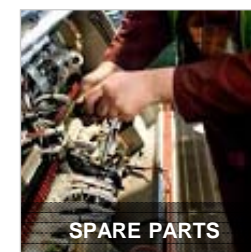
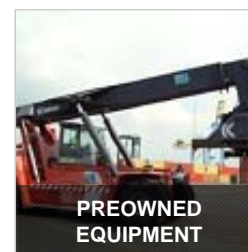
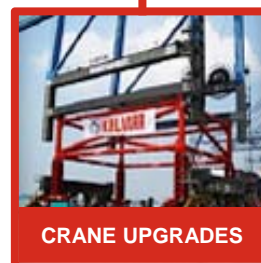
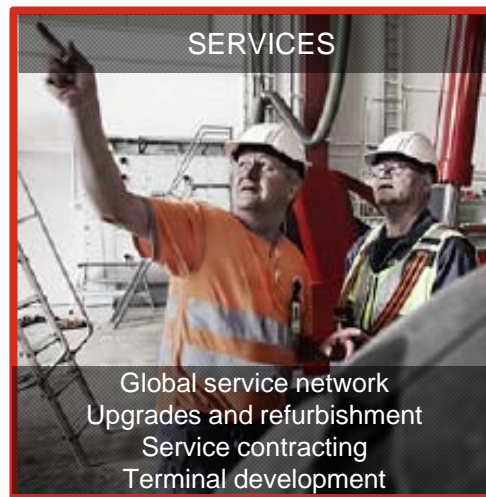
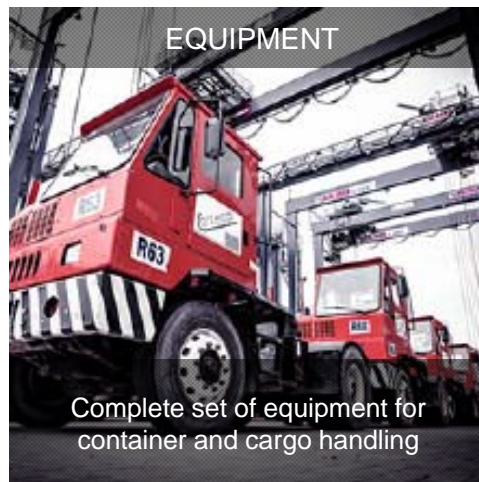




An aerial, wide-angle photograph of a port terminal. The terminal is a large, rectangular paved area with several lanes. Numerous red Kalmar OneTerminal automated guided vehicles (AGVs) are visible, some carrying stacks of colorful intermodal containers. The containers are stacked in neat rows, with colors including blue, green, yellow, and red. The terminal is bordered by a concrete wall with various equipment and structures. The sky is clear and blue.

**Kalmar OneTerminal - the first integrated solution for automated terminals**

# Crane Upgrades is part of Kalmar Services





# What are crane upgrades?

- Crane Upgrades are sizeable projects that enhance the use existing of cranes
- They are performed on large cranes capable of lifting containers or other heavy loads in yards or ship loading/unloading operations
- Typical products include STS cranes, RTG cranes, ASC cranes and straddle carriers
- Upgrades aim to improve either crane productivity, safety, physical dimensioning or physical operating location
- Our projects are based on over 80 years of experience and our key resources include engineering, project management and/or site management





## Why upgrade?

<b>Increasing container volumes</b>	<b>Challenge:</b> increasing wear and tear for cranes <b>Solution:</b> inspections, repair and refurbishment
<b>Increasing terminal competition</b>	<b>Challenge:</b> increasing demands on crane performance <b>Solution:</b> consultancy and inspections, upgrades, modernisation and relocation
<b>Increasing vessel sizes</b>	<b>Challenge:</b> technically competitive cranes become physically too small <b>Solution:</b> consultancy and inspections, upgrades
<b>Increasing need for sustainability</b>	<b>Challenge:</b> being receptive to green values, with acceptable ROI <b>Solution:</b> upgrades and modernisation

## Examples of crane upgrades projects



### **Hong Kong**

Structural visual inspection of four non-Kalmar STS cranes



### **Port Klang, Malaysia**

Refurbishment of 14 non-Kalmar straddle carriers



### **Yilport, Turkey**

Electrification of 18 non-Kalmar RTGs

- Installation and commissioning of pneumatic actuated automatic drive-in units
- Conductor bar system



### **Marseille, France**

Upgrade of three non-Kalmar STS cranes

- Gantry upgrade
- SPMT relocation
- Electrical modifications



### **Rotterdam, the Netherlands**

Upgrade of 12 non-Kalmar STS cranes

- 8-metre height increase
- 4-metre boom extension
- Stacker platform
- Lifetime extension



### **Buenos Aires, Argentina**

Boom extension and relocation of two non-Kalmar STS cranes

- 6-metre boom extension

**Any Crane** / Any Job / Anywhere





# Examples of crane upgrades projects



## **TCB Barcelona – 2014/15**

Heightening 6 meters 3 ZPMC STS Cranes

- Total Control of the Project
- Execution the whole works on site - Safety is our priority



## **Port Said PSCCH – Egypt – 15**

Boom Repair on a Noell STS Crane

- Complete Engineering Works
- Provide right Technical Solution
- Execution and Control of the Works
- Testing Protocol



## **Paceco Valencia15**

Heightening 7 meters 2 Paceco STS Cranes

- Subcontractor of OEM (Paceco)
- Skidding the cranes and execution the whole works on site - Safety is our priority



## **MSCTV Valencia – In execution**

6 STS Crane Heightening and 8 STS Boom extension Works

- Manufacturing Control
- Relocate the cranes: Skidding and SPMT
- Crane Heightening and Boom Extension Works
- Testing Protocol
- Certification of the Cranes



## **Port Said SCCT – In execution**

Securing crane after vessel collision

- Complete Engineering Works: Survey and securing proposal
- Provide right Technical Solution
- Manufacturing Control
- Execution and Control of the Works



## **Abidjan – Ivory Coast15**

Repair Kalmar STS Crane after accident

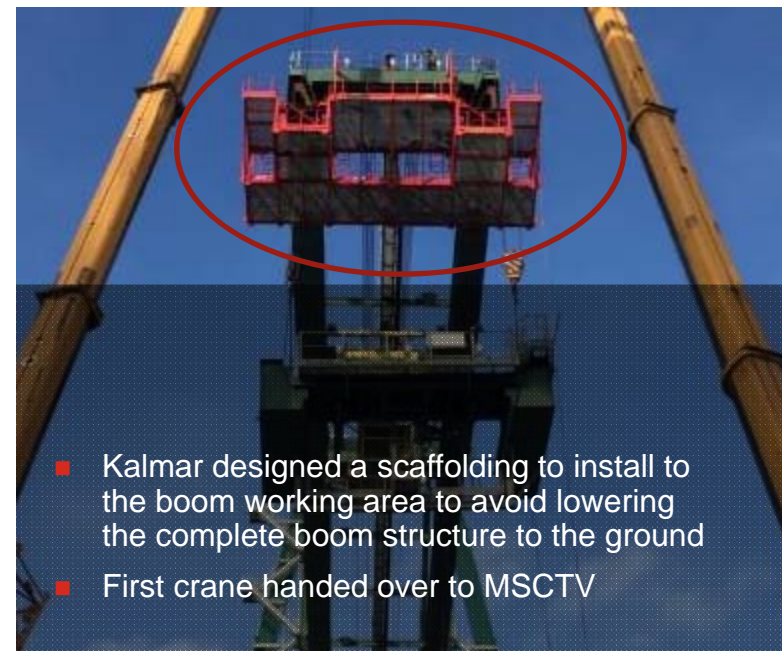
- Complete Engineering Works: Survey and repair proposal
- Provide right Technical Solution
- Manufacturing Control
- Execution and Control of the Works
- Testing Protocol

**Any Crane / Any Job / Anywhere**



# Heightening and boom extension, MSCTV Valencia

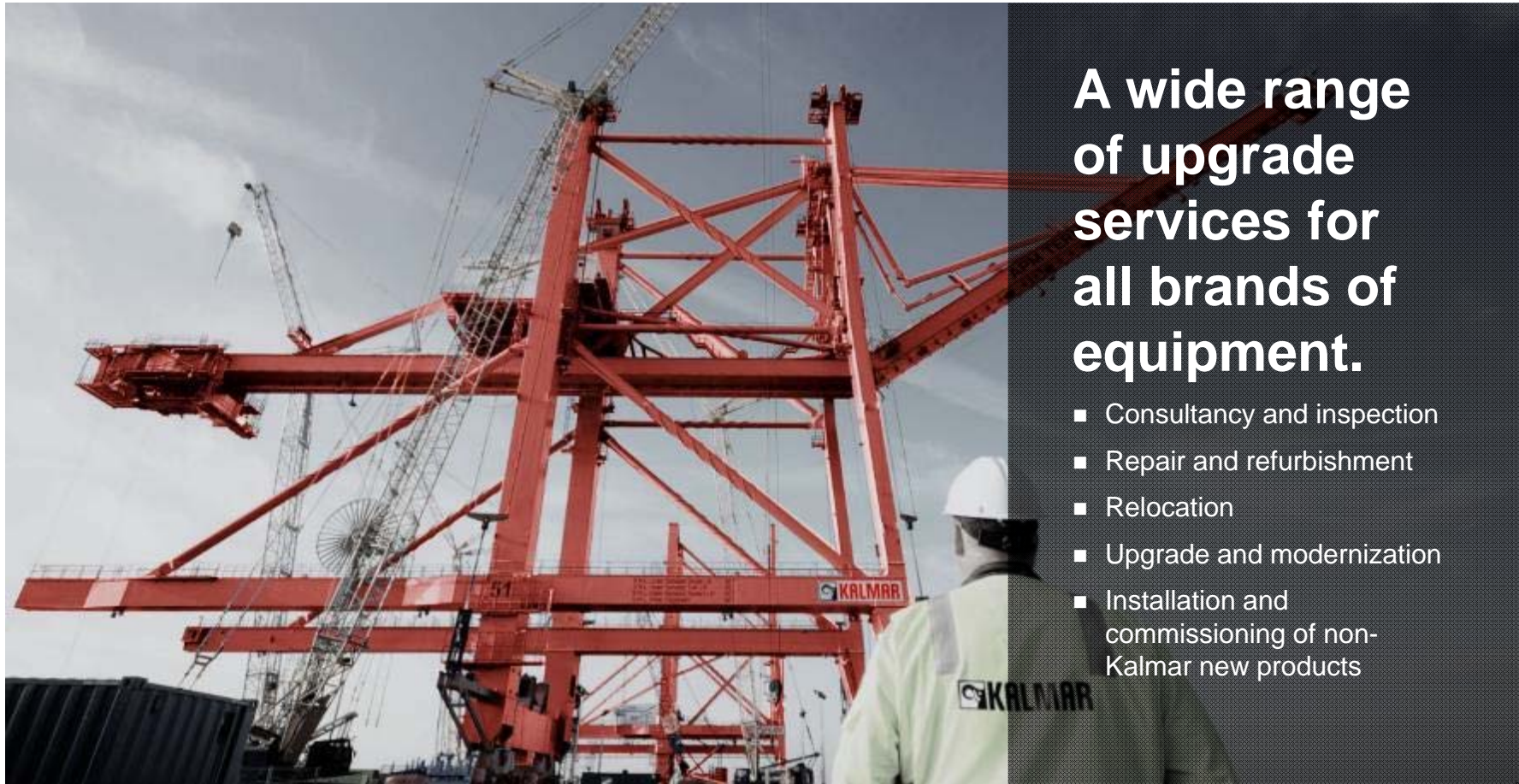
Heightening with 10 meters of 6 STS cranes and 6 meter boom extension of 8 STS cranes



Any Crane / Any Job / Anywhere







## A wide range of upgrade services for all brands of equipment.

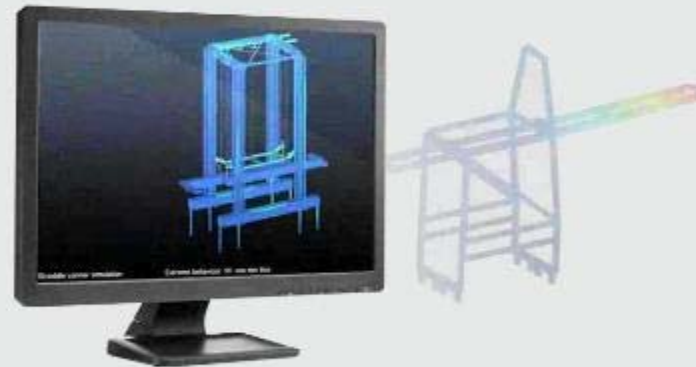
- Consultancy and inspection
- Repair and refurbishment
- Relocation
- Upgrade and modernization
- Installation and commissioning of non-Kalmar new products

Any Crane / **Any Job** / Anywhere



## Consultancy and inspection

- Damage survey
- Equipment modification study
- Lifetime analysis and inspection
- Lifetime extension plans
- Planning for crane upgrade project



Any Crane / **Any Job** / Anywhere

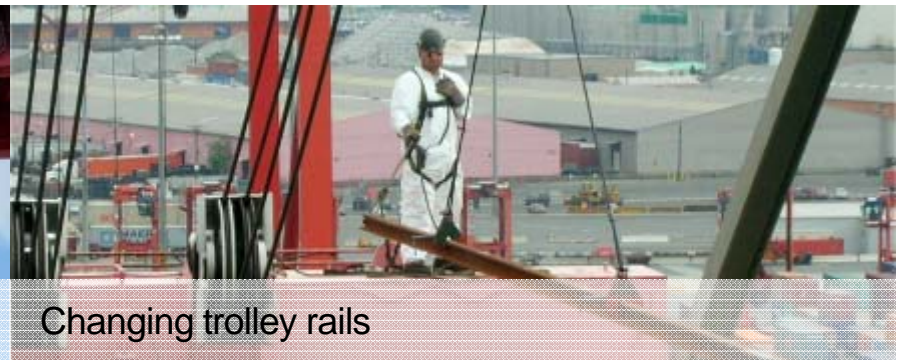




## Repair and refurbishment



Festoon installation



Changing trolley rails



Crane control system and/or motors



Replacing cable reel

Any Crane / **Any Job** / Anywhere



# Relocation



- Moving cranes to another location by land, river or sea
- An increasingly popular choice as terminals adapt to quickly changing needs and seek to optimise their investments

Any Crane / Any Job / Anywhere





## Relocation – within a terminal



Any Crane / Any Job / Anywhere



## Relocation – transport by sea



Sea transport  
relocation of STS  
crane with rail gauge  
modification for new  
terminal

Any Crane / **Any Job** / Anywhere





## Upgrade and modernisation

- Crane heightening and boom extension
- Modernisation of main components (control system, electric motors and cabin etc.)
- Safety additions (stacker platform, boom anti-collision and cameras etc.)
- Environmental and energy saving options (electrification of RTGs and fuel saving engine controllers etc.)
- Automation and operator assisting features (spreader soft landing etc.)

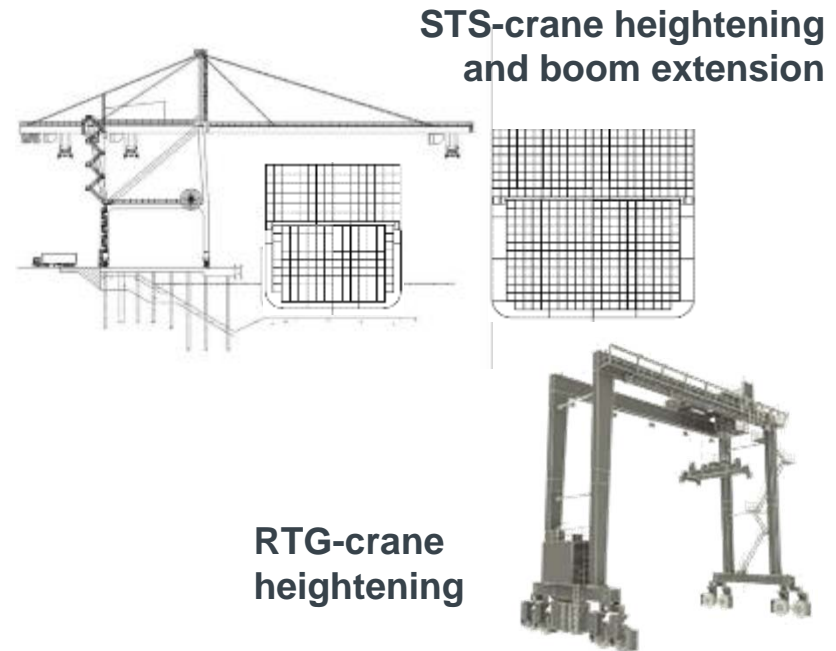
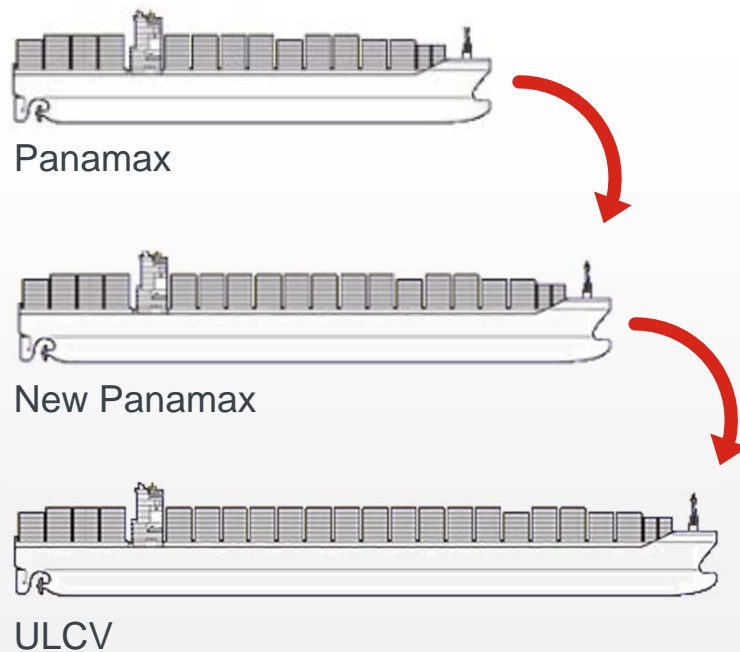


Any Crane / **Any Job** / Anywhere





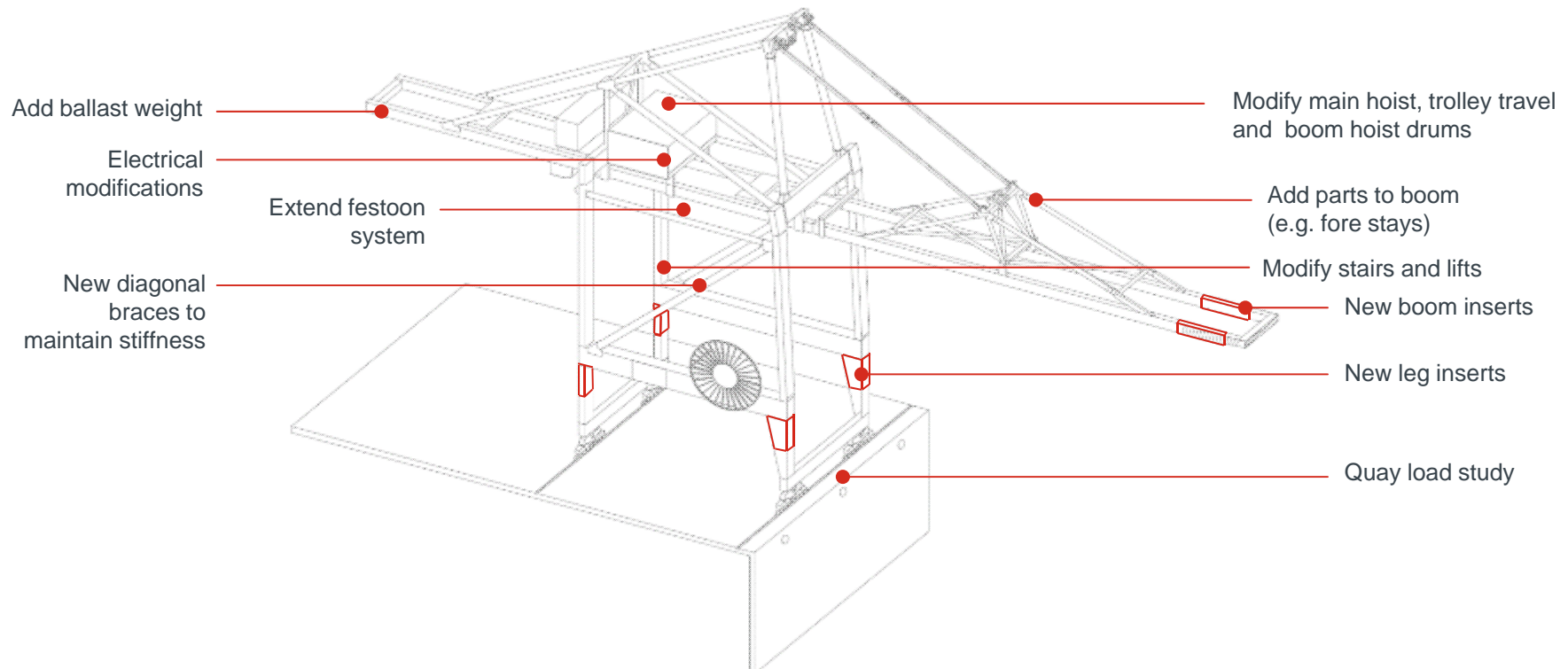
## Upgrade and modernisation – growing ship sizes and volumes are met in most terminals



Any Crane / Any Job / Anywhere



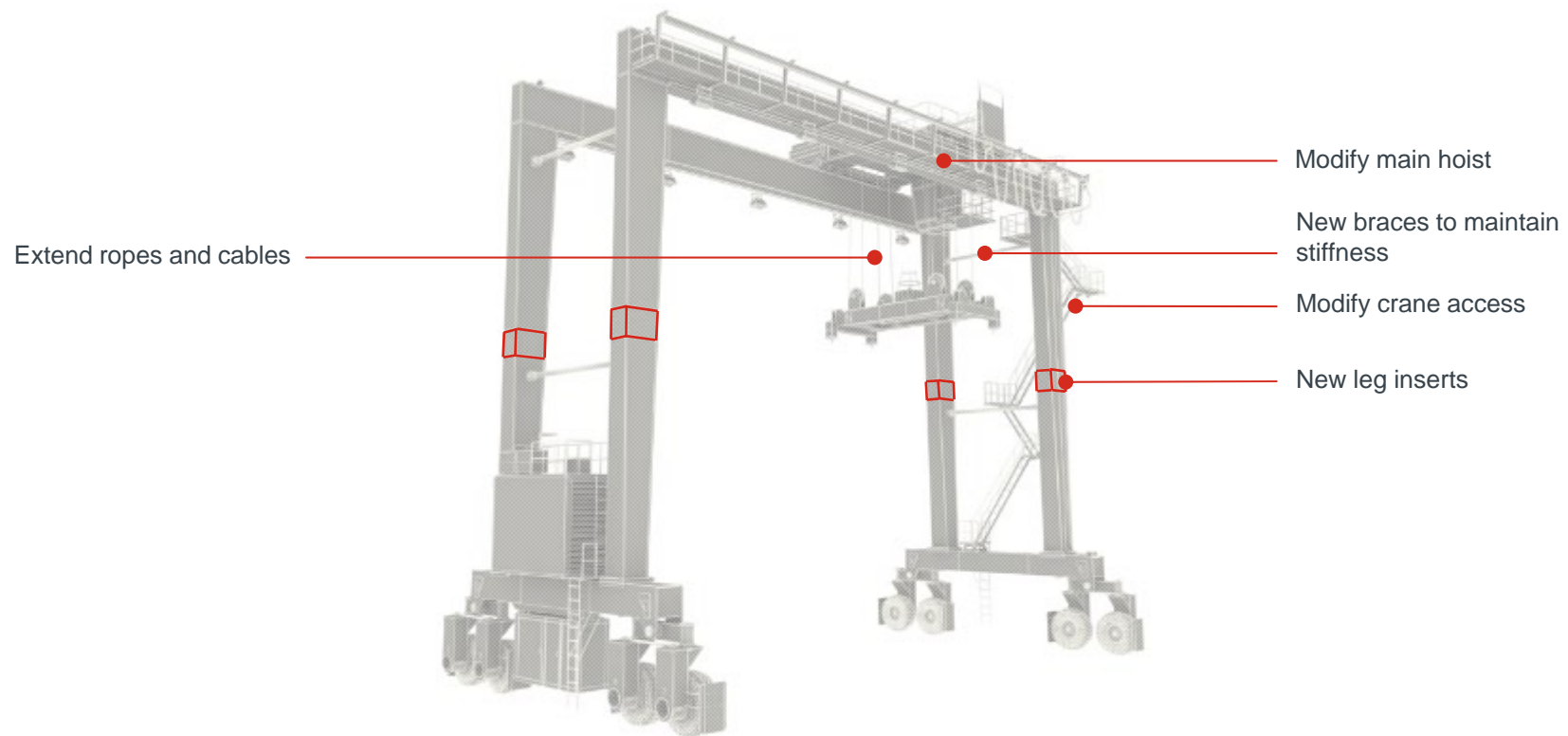
# Upgrade and modernisation – STS-crane heightening and boom extension



Any Crane / **Any Job** / Anywhere



## Upgrade and modernisation – RTG-crane heightening



Any Crane / **Any Job** / Anywhere





# Upgrade and modernisation – budget and time indications

## Budget indication (K€/ crane)

STS boom extension	250 – 1,000
STS crane heightening	750 – 1,250
RTG heightening	75 – 200

## Time from order to delivery (months)

STS boom extension	6 – 12
STS crane heightening	6 – 12
RTG heightening	2 – 4

## Crane out of operation (weeks)

STS boom extension	6 – 10
STS crane heightening	6 – 10
RTG heightening	2 – 4

Any Crane / Any Job / Anywhere



## Upgrade and modernisation – two basic ways to electrify RTG cranes



Cable reel



Conductor bar system

Saving of about  
35,000 litres of diesel  
fuel per year / crane

Zero emissions,  
no engine noise

Less maintenance –  
increased availability

Any Crane / Any Job / Anywhere



## Upgrade and modernisation – a rapid return on investment

### Savings

Diesel Electric RTG (3,000 hours per year)	Electrified RTG (3,000 hours per year)
18.0 litres/hour	40 kW/hour
1.25 €/litre	0.05 €/kWh
54,000 litre/year	120,000 kWh/year
67,500 €/year	6,000 €/year
Approximate savings per RTG per year: <b>€60,000 = US\$ 75,000</b>	

**ROI expectation:** 2 - 4 years (depending on the scope and fuel price)

**Variables:** Total container block length; conductor bar structure or cable length / Local price level for labor and hardware structures / Single or double sided connection (conductor bar) / Filtering of electric power / RTG voltage transformation / various other minor technical challenges.

Any Crane / **Any Job** / Anywhere





## Any job



Any Crane / **Any Job** / Anywhere



## Five regional business centres that cover the world



Any Crane / Any Job / **Anywhere**





# Summary

## Why upgrade?

- Maximise the use of your current assets
- Handle bigger vessels and larger volumes
- Optimise crane performance
- Meet your sustainability targets
- Improve safety

## Why choose Kalmar?

- A trusted partner with a solid track record and service mindset
- Global reach
- Any crane, any job, anywhere.



## Video Crane services projects







**Thank you!**

**eduardo.prat@kalmarglobal.com**  
**www.kalmarglobal.com**