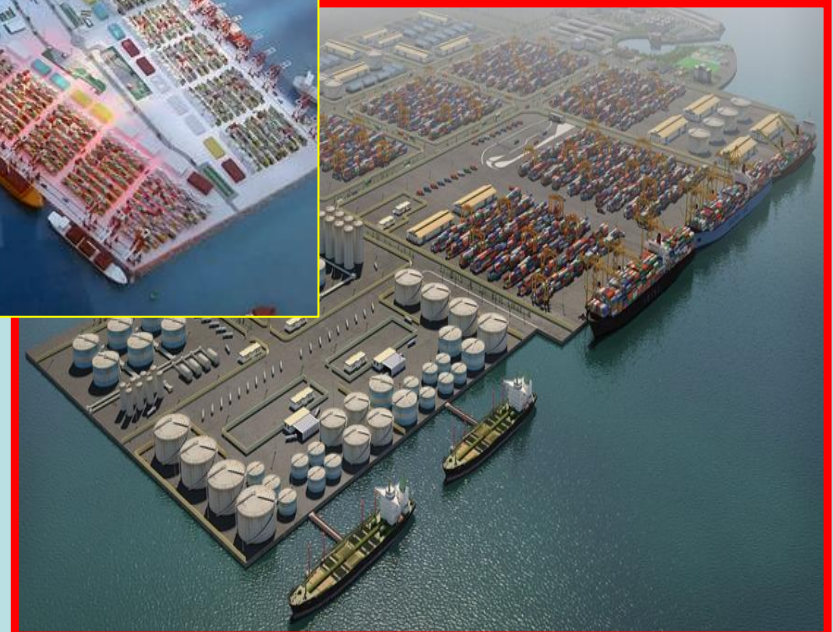
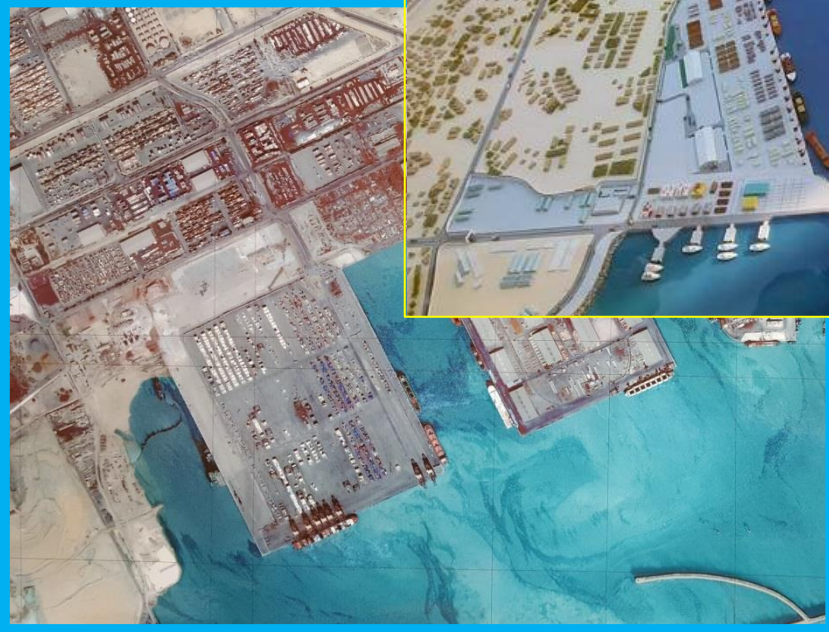



PMO MAJOR PROJECTS



Key Points of Port Activities in Iran

- 
- All Activities in Iranian port have been privatized
 - PMO Manages all the ports in Iran
 - Infrastructure is provided by the PMO and superstructure is supplied by the private sector
 - Nearly all Iranian ports are special/free Economic Zone

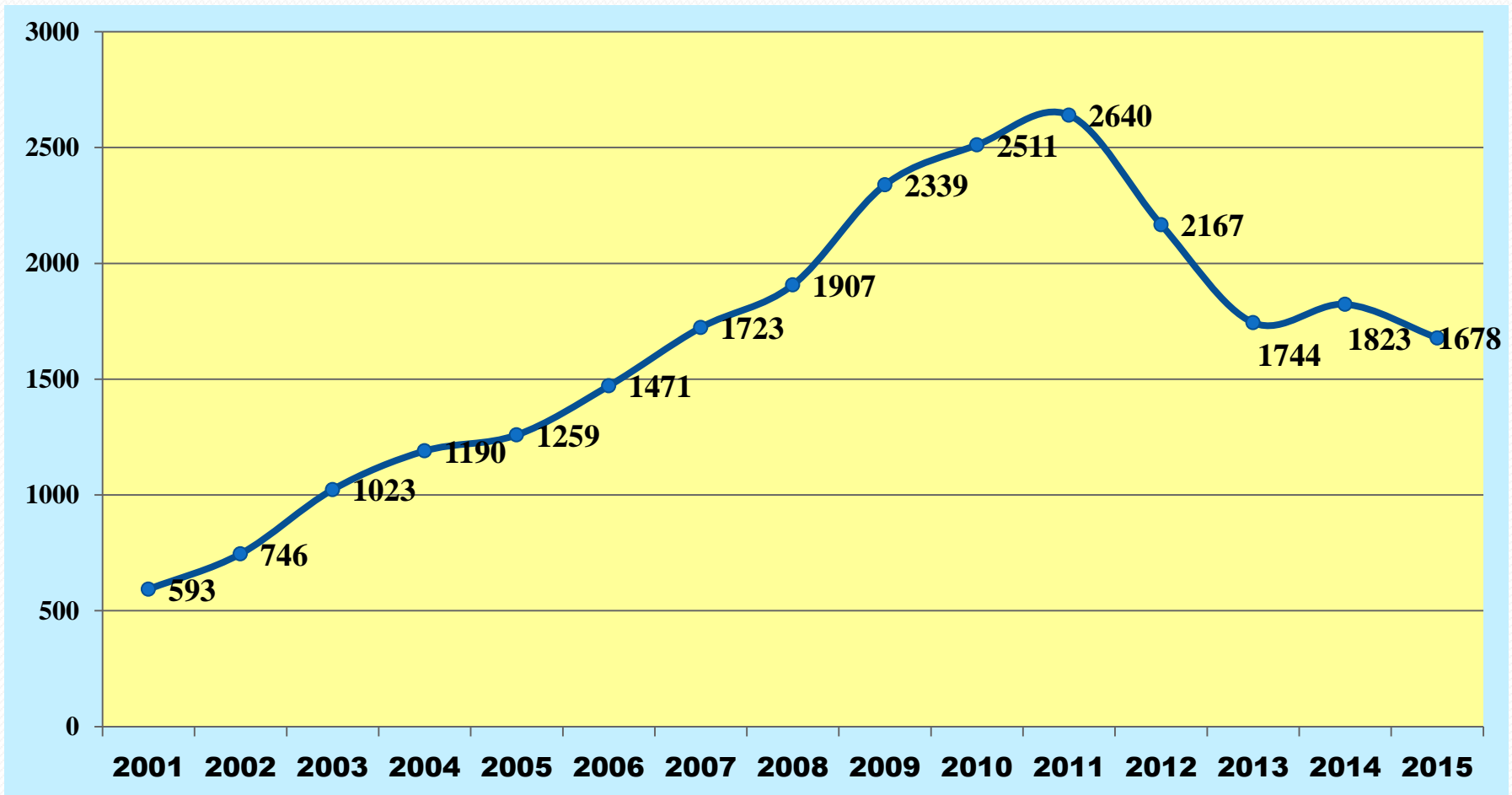


BANDAR ABBS

- ❖ Port area = 4800 hec
- ❖ Berths No. = 36
- ❖ Warehouse = 246,700 m²
- ❖ Capacity= 94 Million Tons



Bandar Abbas Port Throughput (Thousand TEU)



BANDAR ABBAS TERMINALS

(Geographical Position)



Length: 975 m

Depth: 12.5 m

Total Area: 30 ha

Gantry crane: 10 (panamax & post panamax)

Capacity: 1.7 m TEU

Availability of: CFS & Reefer facilities

Container
Terminal 1

An aerial photograph of a port facility. A large, rectangular container terminal is outlined in blue and labeled 'Container Terminal 1'. The terminal is filled with numerous shipping containers. To the left of the terminal, a large ship is docked at a pier. The surrounding area includes various industrial buildings, roads, and parking lots. The water is a deep blue color.

Tender process for Terminal 1

(Main Considerations)

The tender process for Terminal 1 is underway:

- ❖ The Operator shall be a **Joint Venture** of an Iranian and an international operator
- ❖ The duration of the contract will be **5 years**
- ❖ The operator shall make an investment worth **33 m USD**

TERMINAL 2

Geographical Position



Length: 850 m

Depth: 17 m

Gantry crane: 8 (Super post panamax)

Capacity: 1.4 m TEU

Availability of: Reefer facilities

PHASE
1

An aerial photograph of a large port facility. The image shows a long pier extending into the water, with several large rectangular storage areas. A yellow arrow points from the bottom left towards a specific area on the pier, which is labeled 'PHASE 1' in a blue circle. The surrounding area includes various industrial buildings, parking lots, and other port infrastructure. The water is a deep blue color.

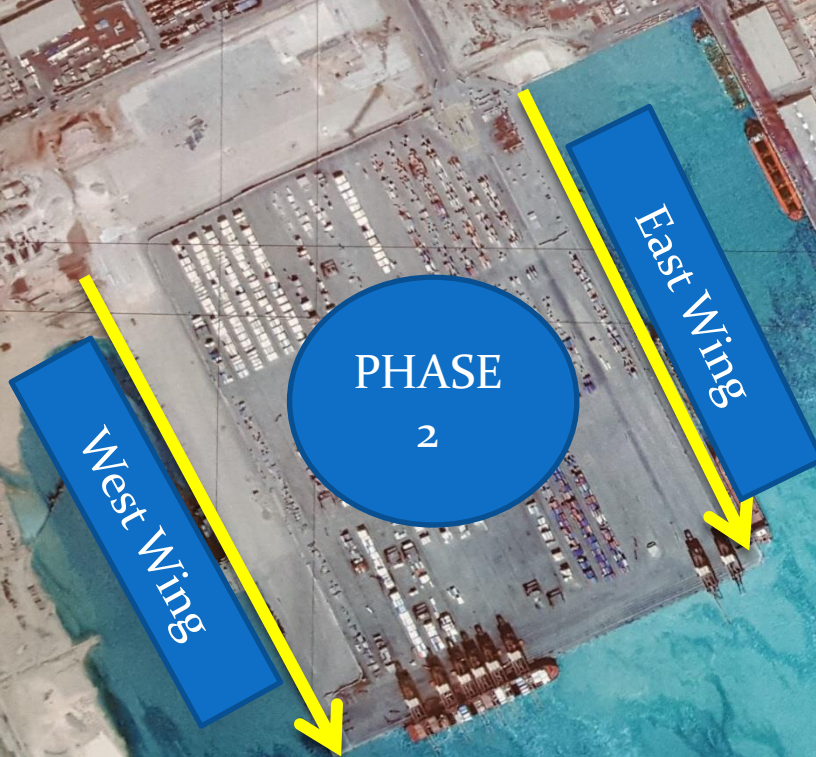
Length: 950+950 m

Depth: 16 m

Gantry crane: 18 (Super post panamax)

Capacity: 3 m TEU

Investment: 230 m USD



Tender process for Terminal 2

(Main Considerations)

The tender process for Terminal 2 is underway:

- ❖ The Operator shall be a **Joint Venture** of an Iranian and an international operator
- ❖ The duration of the contract will be **10 years**
- ❖ The operator shall make an investment worth **50 m USD**

CONTAINER TERMINAL 3 (Geographical Position)



- ❖ Port Area: 11000 hec.
- ❖ Berth no: 37
- ❖ Warehouse: 622000 M²
- ❖ Capacity: 55 million tons

Imam Khomeini Port



Construction of Grain Terminals

Grain Silos with capacity of: 100000 + 100000 tons


Mechanized Grain Warehouse: 10.000 m²

Grain berth: 560 m

Investment: 30 m USD



BIK Container Terminal

- 
- ❖ Container Berth: 1050 m
 - ❖ Capacity: 750 000 TEU
 - ❖ Container Yard: 16 hec
 - ❖ Equipment: 4 Gantry Crane

Tender process for BIK Container Terminal

(Main Considerations)

The tender process for Terminal 2 is underway:

- ❖ The Operator shall be a **Joint Venture** of an Iranian and an international operator
- ❖ The duration of the contract will be **15 years**
- ❖ The operator shall make an investment worth **35 m USD**

- ❖ Port area = 90 hec
- ❖ Berths No. = 13
- ❖ Warehouse = 31,071 m²
- ❖ Capacity= 8 Million Tons

BUSHEHR



NEGIN Island Development Plan

Total Area: 400 ha



NEGIN Island Development Plan



Container Berth: **300 m**
Multipurpose Berth: **300 m**
Liquid Bulk Berth: **220 m**
Investment: **150 m USD**

Development Plan started in: **2014**
And shall end in: **2018**

- ❖ Port area = 284 hec
- ❖ Berths No. = 10
- ❖ Warehouse = 102,000 m²
- ❖ Capacity = 4.5 Million Tons



CHABAHAR

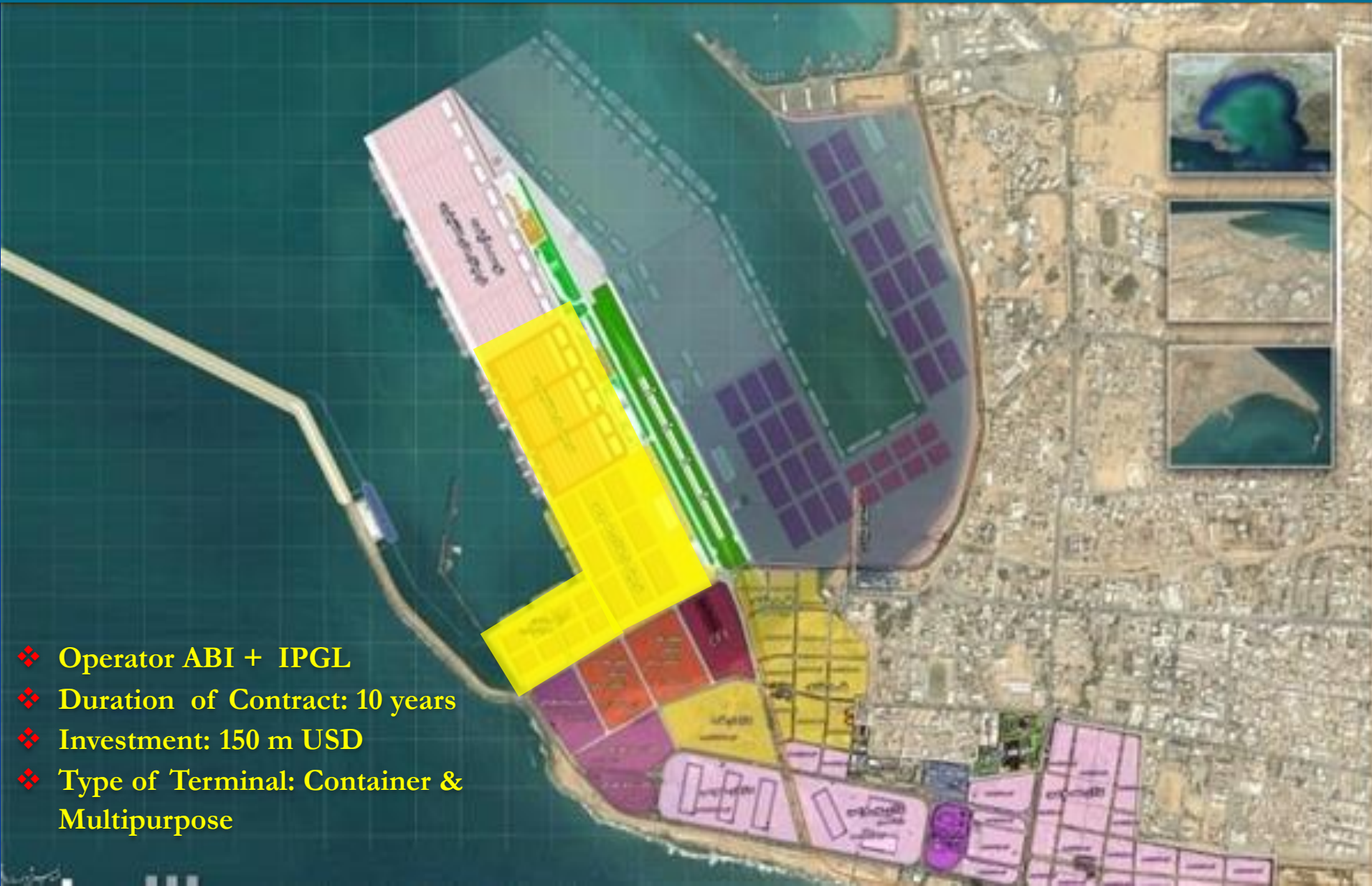
PHASE I

- ❖ Container berth: 740 m
- ❖ Multipurpose berth: 664 m
- ❖ Land reclamation: 195 ha
- ❖ Equipment: 4 STS & 12 RTG



Chabahar Development Plan

CHABAHAR Cargo Terminal



- ❖ Operator ABI + IPGL
- ❖ Duration of Contract: 10 years
- ❖ Investment: 150 m USD
- ❖ Type of Terminal: Container & Multipurpose



ANZALI



ANZALI Development Plan



- ❖ Construction of berth: 20
 - ✓ 10 berths have already been constructed
 - ✓ 3 berths shall be completed shortly
 - ✓ 7 berths will be completed next year
- ❖ Construction of breakwater: 3 km

The End

THANK YOU

