



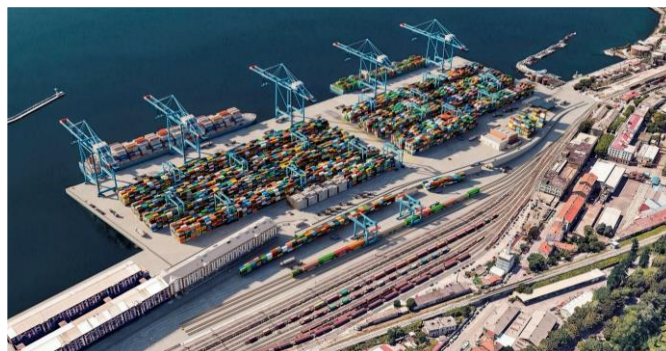
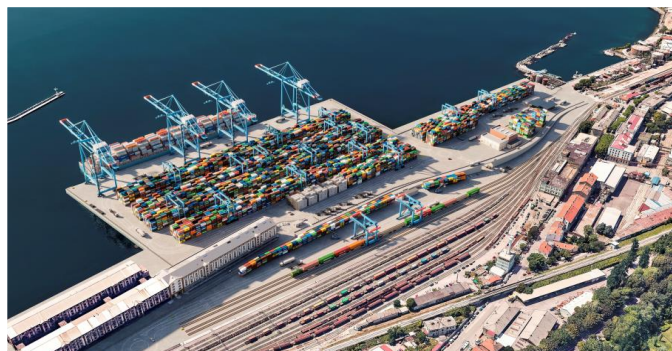
MEDITERRANEAN
Ports and Logistics **2024**



LUČKA UPRAVA RIJEKA
PORT OF RIJEKA AUTHORITY

Capital projects in the Port of Rijeka

Mediterranean Ports and Logistics 2024, Trieste 29 May 2024



Agenda

1

Yesterday

- Completed projects co-financed by CEF (EU MFF 2014 – 2020)
- Container throughput 2023 and rail transport growth

2

Today

- Ongoing projects co-financed by CEF (EU MFF 2014 – 2020)
- Investment by the concessionaire Rijeka Gateway

3

Tomorrow

- New Rijeka Gateway Container Terminal
- Development of inland port capacity – Inland terminals Škrlevo & Matulji
- Railway Projects – Mediterranean Corridor : Railway Section Škrlevo – Rijeka – Jurdani & Lowland Railway
- New Container Terminal on the Island of Krk

4

Conclusion & RGW video

Capital projects in the Port of Rijeka - Yesterday

Completed projects co-financed by CEF (EU MFF 2014 – 2020)



Co-financed by the Connecting Europe
Facility of the European Union

€ 136 m : Total value of the projects co-financed by CEF (EU MFF 2014 – 2020)

- 2 projects for increasing Rijeka port last mile railway connectivity
 - ✓ Intermodal Yard at Adriatic Gate Container Terminal and upgrade of the railway station Rijeka – Brajdica
 - ✓ Intermodal Yard at new Zagreb Deep Sea Container terminal and reconstruction of cargo part of Rijeka railway station
- Value of projects: € 67,143 m



Port of Rijeka multimodal
platform development and
interconnection to Adriatic
Gate Container Terminal
(POR2CORE-AGCT)

**Completed December
2020**

€ 35,556 m

Upgrade of the Rijeka Port
infrastructure - Zagreb
Deep Sea Container
Terminal (POR2CORE-ZCT)

**Completed
September 2022**

€ 31,587 m



Capital projects in the Port of Rijeka - Yesterday

Completed projects co-financed by CEF (EU MFF 2014 – 2020)



€ 136 m : Total value of the projects co-financed by CEF (EU MFF 2014 – 2020)

- Project in Raša Basin includes reconstruction works of the quay platform, installation of the new crane rails, railway tracks at general cargo terminal
- Project in Bakar Basin includes removal of the existing infrastructure and reconstruction of installations, rainwater and wastewater drainage system, reconstruction of the pavement and railway tracks at bulk cargo terminal
- Value of projects: € 13,009 m



Upgrade of the Rijeka Port
infrastructure - General cargo
terminal – Raša Basin
(POR2CORE-GCT)

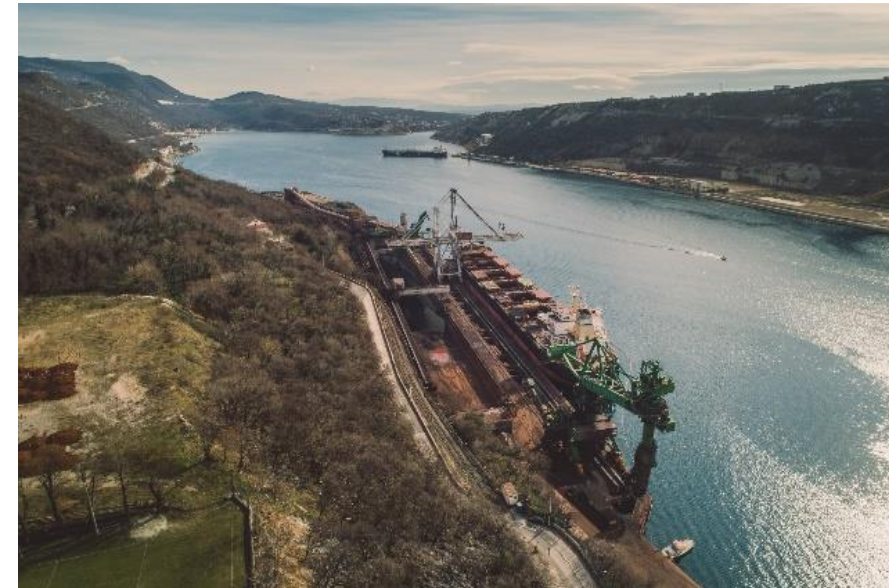
€ 6,914 m

**Completed
April 2021**

Upgrade of the Rijeka Port
infrastructure – Bakar bulk
cargo terminal – Bakar Basin
(POR2CORE-BCTB)

€ 6,095 m

**Completed
December 2021**



Capital projects in the Port of Rijeka - Yesterday

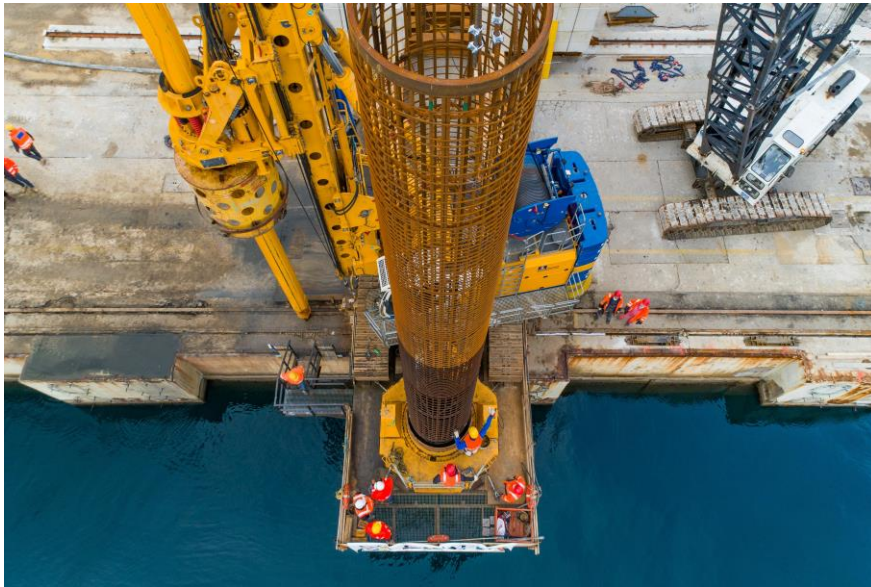
Completed projects co-financed by CEF (EU MFF 2014 – 2020)



Co-financed by the Connecting Europe
Facility of the European Union

€ 136 m : Total value of the projects co-financed by CEF (EU MFF 2014 – 2020)

- Project of AGCT Dredging enables accommodation of bigger container vessels at Adriatic Gate Container Terminal (equalising of the sea depth at 428 m along the quay wall)
- Implementation of Port Community System (standardized digital platform for exchanging data between port community members)



Upgrade of the Rijeka port
infrastructure – Dredging
at the AGCT
(POR2CORE-AGCT
Dredging)

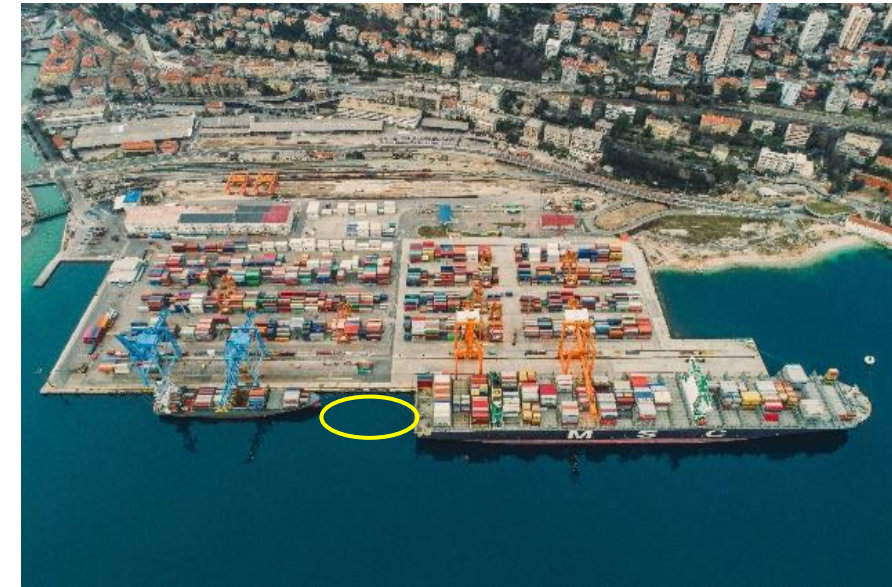
€ 17,389 m

**Completed
December 2023**

Upgrade of the Rijeka Port
infrastructure – Port
Community System
(POR2CORE-PCS)

€ 1,660 m

**Completed
December 2022**



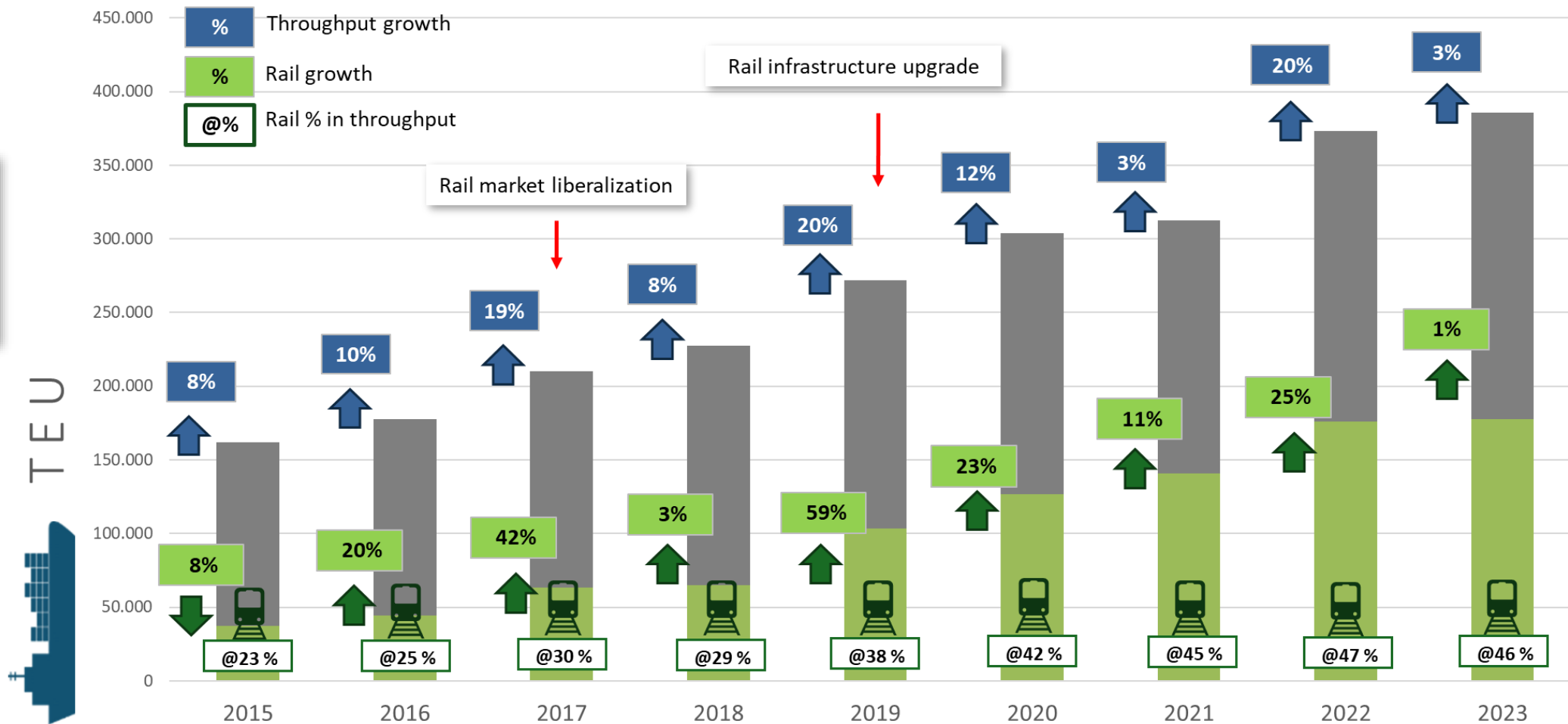
Capital projects in the port of Rijeka - Yesterday

Benefits today: Growth of container throughput and rail transport

Volumes 2023

Total: 385.784 TEU

Rail: 177.803 TEU



Source: Adriatic Gate Container Terminal

Capital projects in the Port of Rijeka - Today

Ongoing projects co-financed by CEF (EU MFF 2014 – 2020)



Co-financed by the Connecting Europe
Facility of the European Union

€ 136 m : Total value of the projects co-financed by CEF (EU MFF 2014 – 2020)

- Project in Rijeka Basin includes removal of the existing infrastructure and reconstruction of installations, rainwater and wastewater drainage system, reconstruction of the pavement, railway tracks and crane rails
- Project to extend Prague Pier include preparation of the technical and procurement documentation for works
- Value of projects: € 37,253 m



Upgrade of the Rijeka Port
infrastructure - Rijeka Basin
(POR2CORE-RijekaBasin)

€ 33,664 m

Ongoing project

Studies to upgrade the
Rijeka Port infrastructure –
Prague Pier Extension
(POR2CORE-Prague Pier
Extension)

€ 3,589 m

Ongoing project

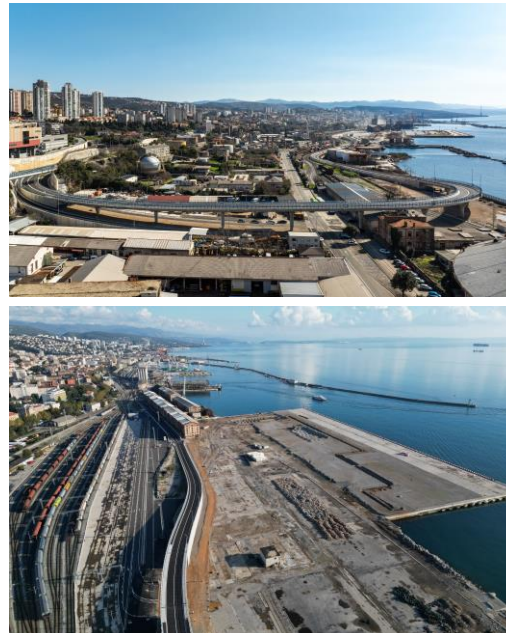
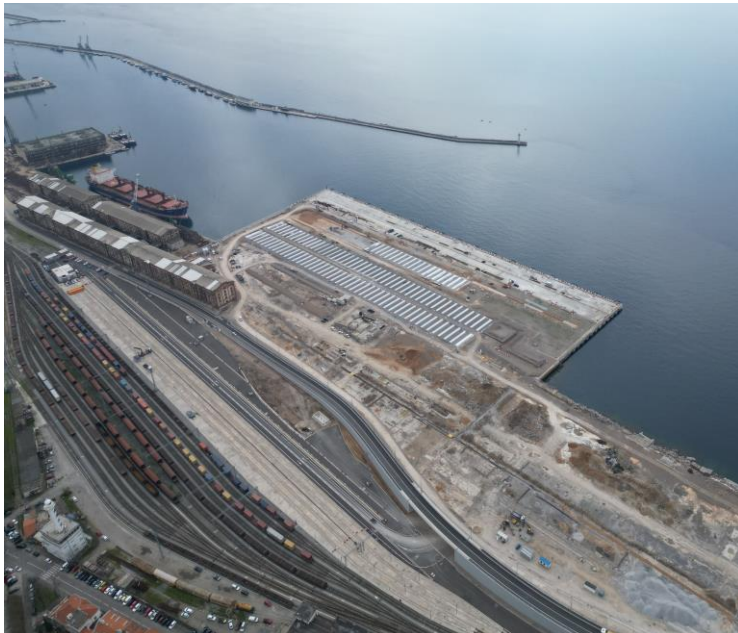


Capital projects in the Port of Rijeka - Today

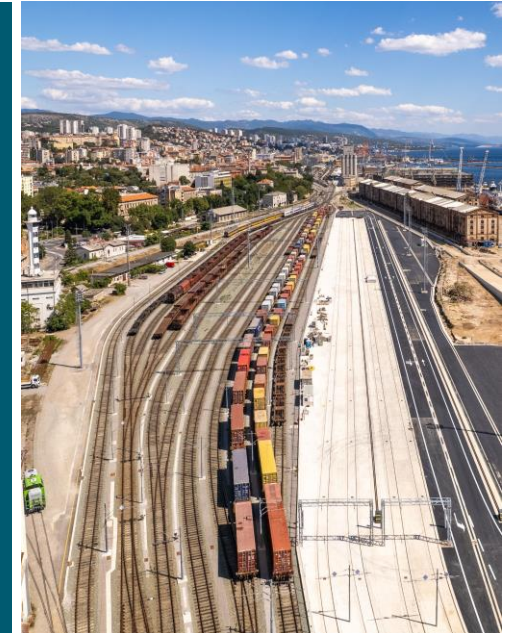
Investments by the concessionaire Rijeka Gateway

Project Status - March 2024

- Total investments € 380 m (Phase 1 + 2)
- Construction works ongoing - Groundbreaking ceremony held on 13th September 2023.
- All major equipment (STS container cranes, RMG and RTG cranes – electrical power) is ordered in December 2022.



- ✓ Intermodal Yard is a part of concession area and is completed in September 2022.
- ✓ Terminal access State Road DC 403 opened in October 2023.
- ✓ New Access Port Road West construction is finished in September 2023.



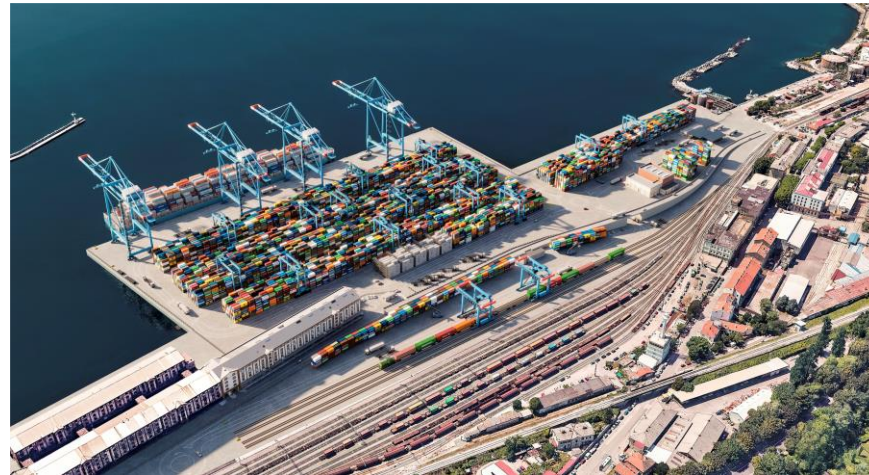
Capital projects in the Port of Rijeka - Tomorrow

New Rijeka Gateway Container Terminal

First container terminal on the Adriatic with **remote- controlled cranes**

Go-live: Q2 2025 (Phase 1)

RGW CT in 2025 will be partially automated terminal (or hybrid, semi-automated) with readiness to be fully automated in the near future



Phase 1

Capacity: 650k TEU
Berth: l=400m, d=20m
Max. vessel size: 18,000 TEU
Total area: 16ha
STS (super post panamax) 4



Phase 2

1,055k TEU
 l=680m, d=20m
 24,000 TEU
 20ha
 5

Capital projects in the Port of Rijeka - Tomorrow

Development of inland port capacity

Škrljevo Inland Terminal

- 10 km away from Rijeka and 3 km from Bakar
- Total area: 417,413 m²
- Open storage area: 130,000 m²,
- Closed warehouses: 44,000 m²
- Free area for development: 243,000 m²
- Free customs zone
- Storage possibility of various types of cargo
- Total area of empty depot 80,000 m²
- Storage capacity of 5,400 TEU dry + 150 TEU reefer plugs
- Connected to the railway and highway network of the Mediterranean corridor
- Open investment opportunities
- Development of industrial facilities and construction of new warehouses, storage of various types of cargo and finishing, processing and packing of various products

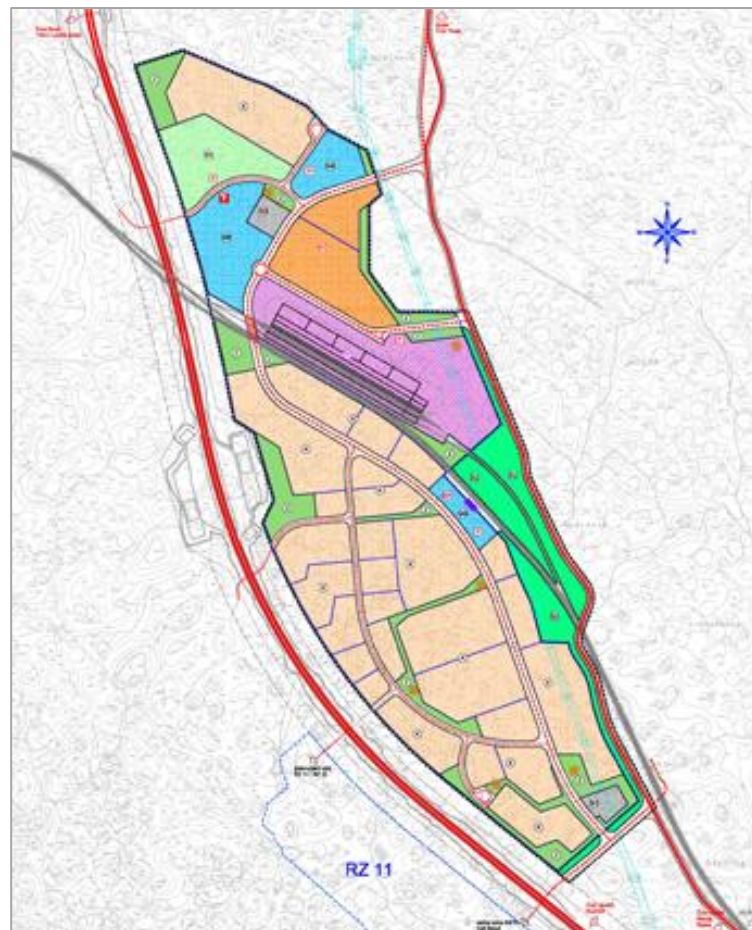


Capital projects in the Port of Rijeka - Tomorrow

Development of inland port capacity

Matulji Inland Terminal

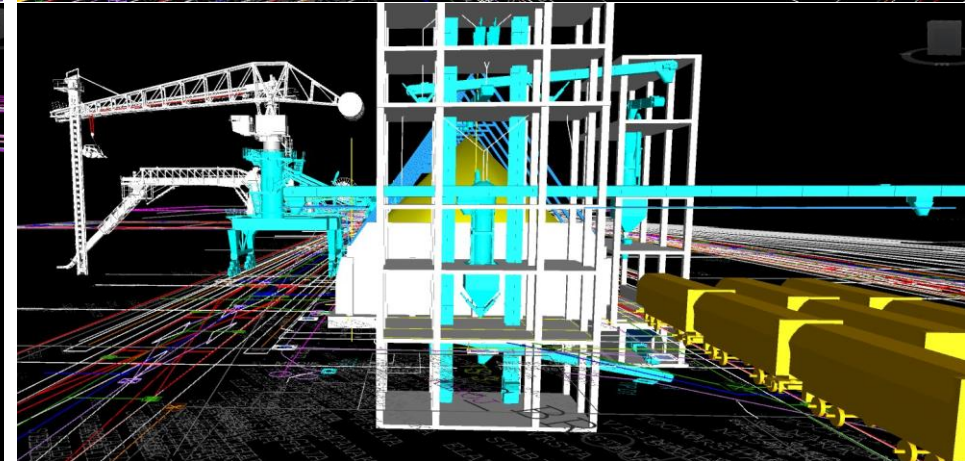
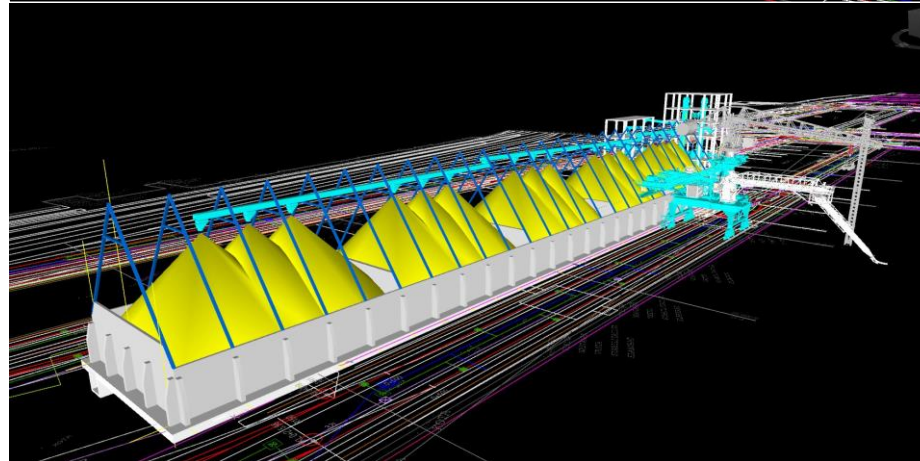
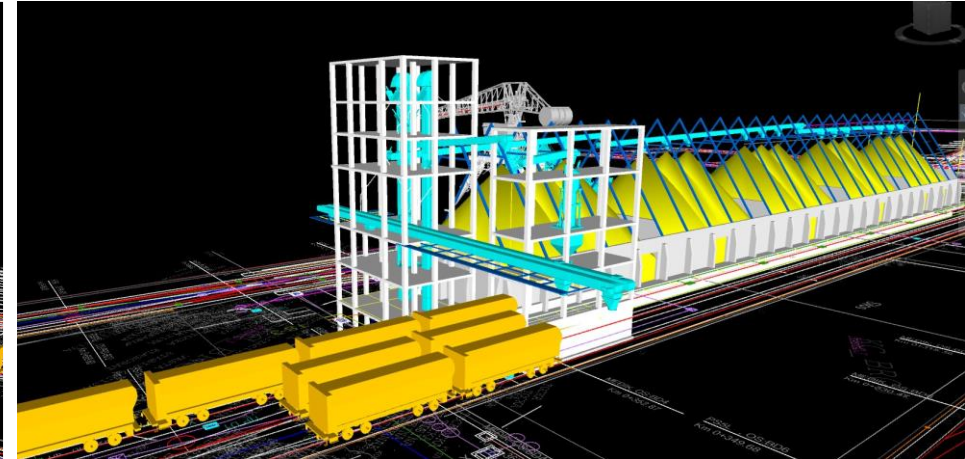
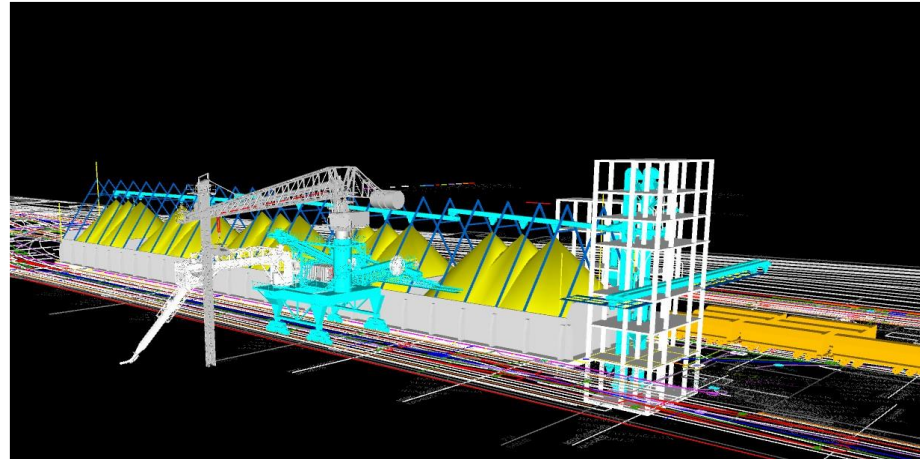
- Total area 160 ha
- Excellent geostrategic position (railway and road connections)
- Located about 18 km north-west of the future Rijeka Gateway Container Terminal
- External container depot
- Already dedicated for intermodal activity 50ha
- Preparation of the Feasibility Study for the Matulji Inland Terminal is underway
- Study is funded by a grant from the Korea Cooperative Supporting Center for Overseas Port Development (KCSC)
- Approved budget for preparation of the FS amounts to USD 800,000



Capital projects in the Port of Rijeka - Tomorrow

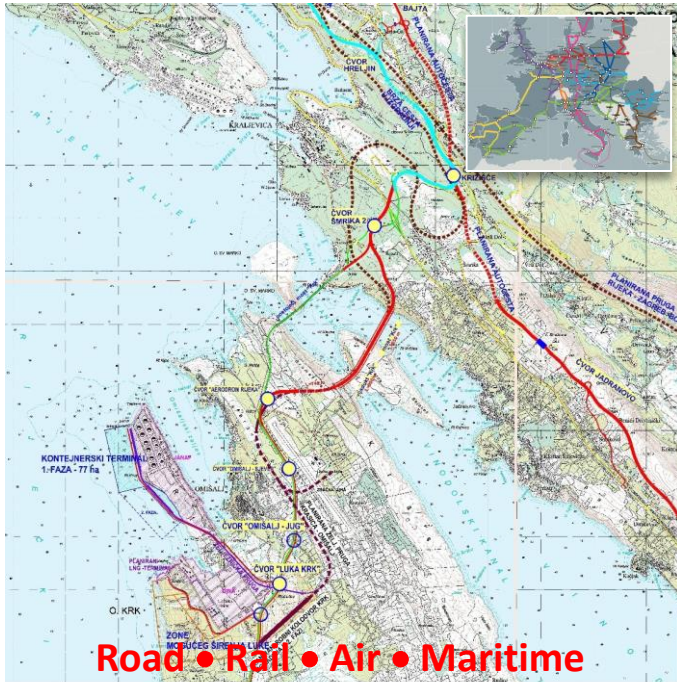
Installation of clean transhipment equipment for grains - Basin Rijeka (POR2CORE – Grains)

- Replacement of existing ship unloader/loader for grains and oilseeds
- Replacement of existing equipment for horizontal transport of grains and oilseeds
- Installation of new equipment for the manipulation of grains and oilseeds in the storage facility
- Installation of new equipment for grains and oilseeds unloading/loading from/to trains
- Estimated total value: € 13,99 m



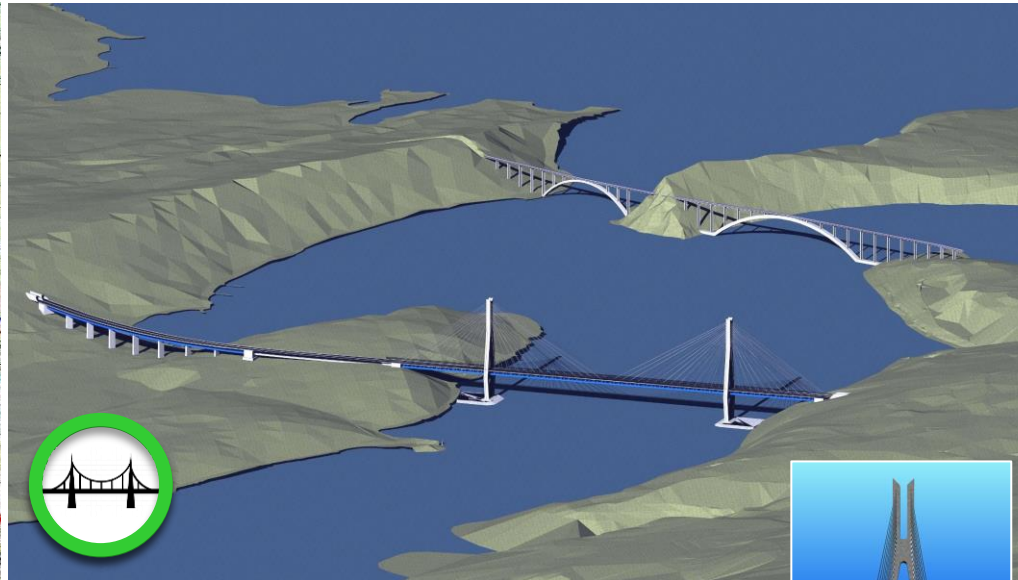
Capital projects in the Port of Rijeka - Tomorrow

New Container Terminal on the Island of Krk



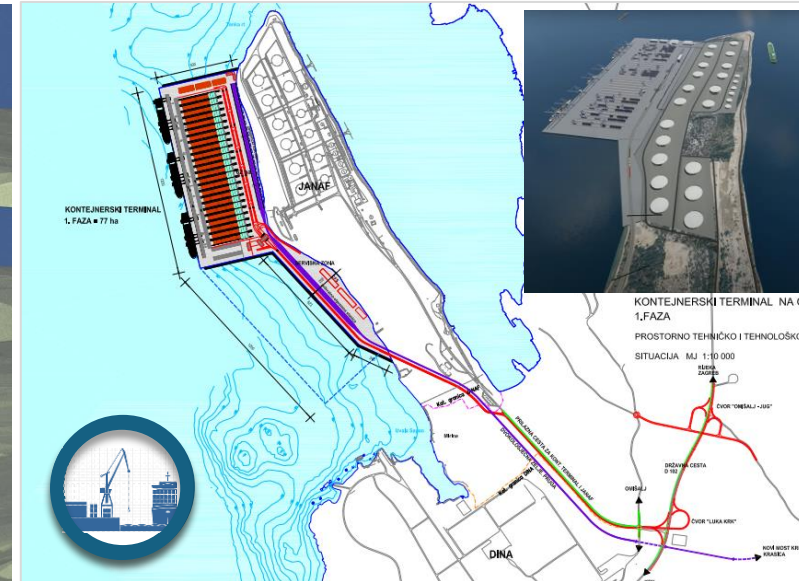
Connection to the TEN-T Corridors

- Lowland Railway Zagreb – Rijeka
- New railway to the Island of Krk



New rail and road Krk bridge

- Bridge length 850 m
- Viaduct length 900 m



New Container Terminal - Phase 1

- | | |
|-------------------|---------------|
| • Quay length | 1400 m |
| • Depth alongside | 20 m |
| • Terminal area | 62 ha + 15 ha |
| • Stacking area | 33,600 TEU |
| • Capacity | 3 M TEU |

Conclusion

2035

Completion of all capital projects

ports, railways, roads, bridge,



- Rijeka Gateway Container Terminal Phase 1 + 2
- Matulji Inland Terminal
- New Container Terminal on the Island of Krk
- Lowland Railway Rijeka – Zagreb – State Border Hungary

- Total capacity of Rijeka port **5,2 million TEU**
- **Port of Rijeka - One of the leading container ports** in the Mediterranean



MEDITERRANEAN
Ports and Logistics **2024**



LUČKA UPRAVA RIJEKA
PORT OF RIJEKA AUTHORITY

Thank You
For Your Attention



Mediterranean Ports and Logistics 2024, Trieste 29 May 2024

