

---

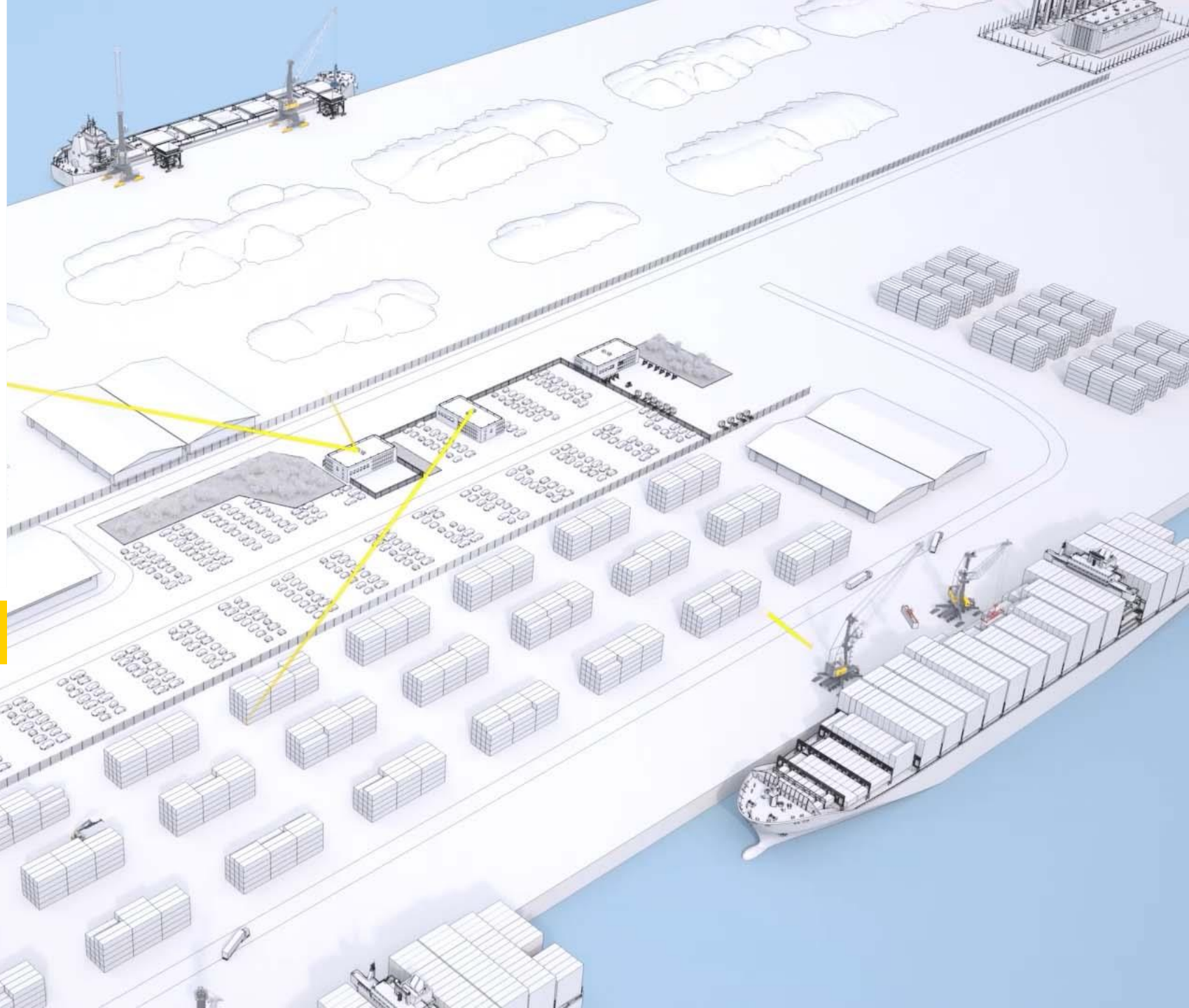
# LiDAT® smartApp

---

Smart up your  
performance

# LIEBHERR

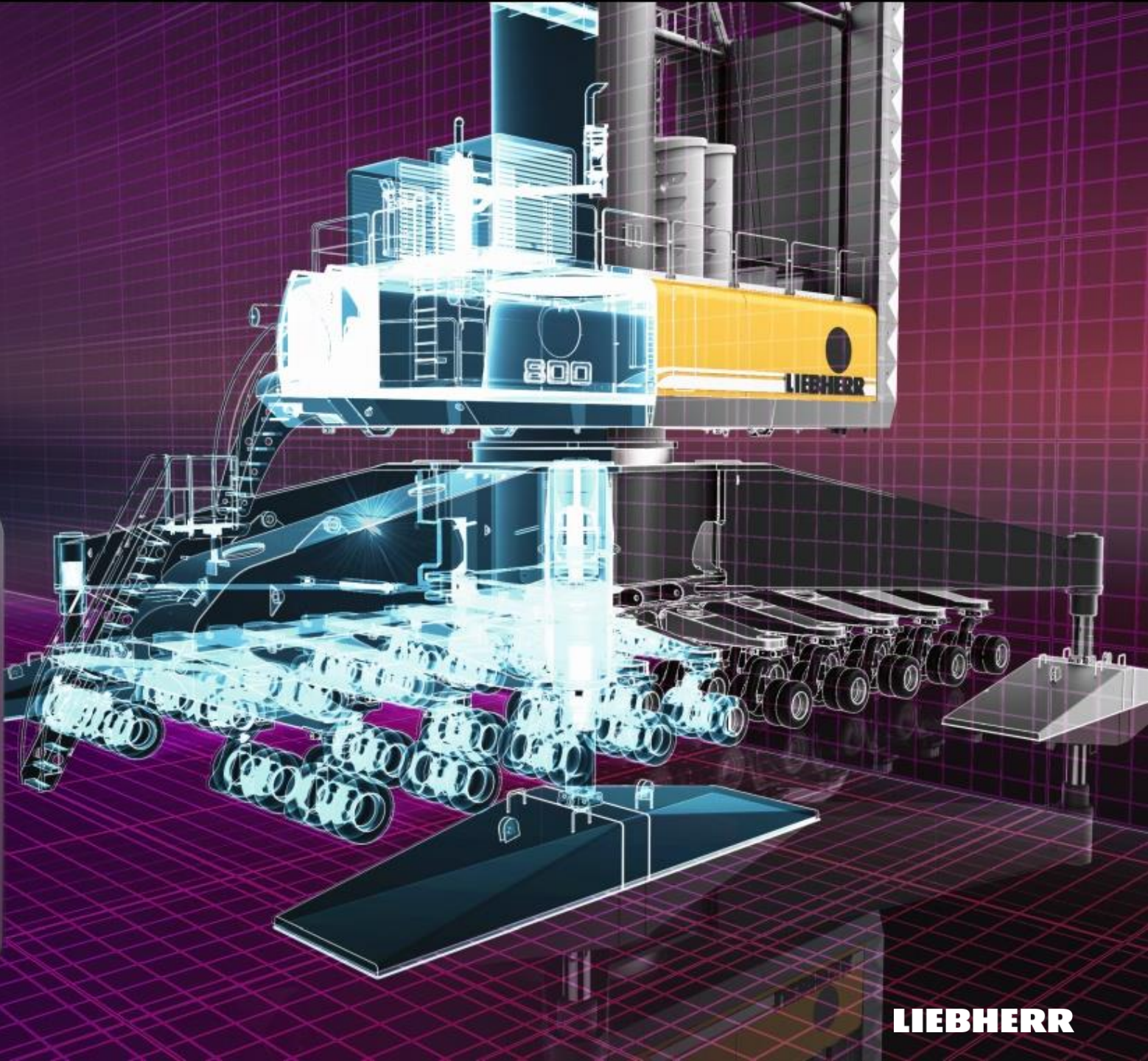
Maritime cranes





## DISC

Intelligent technologies give optimum control over the material handling process.



**LIEBHERR**



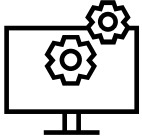
LiDAT® smartApp

# Content

- LiDAT® smart app - What it is
- Technical description
- Benefits
- What comes next



# Intro



## Analysis

Detailed analysis of cargo handling process in real-time



## Web app

Intuitive web application, available for different devices



## Webservice

Connect the smartApp to your own IT infrastructure



## Optimisation

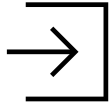
Identification of starting points for optimisation activities

# Intro



## Tracking

Comprehensive, informative data collection on process and machine statuses



## Direct access

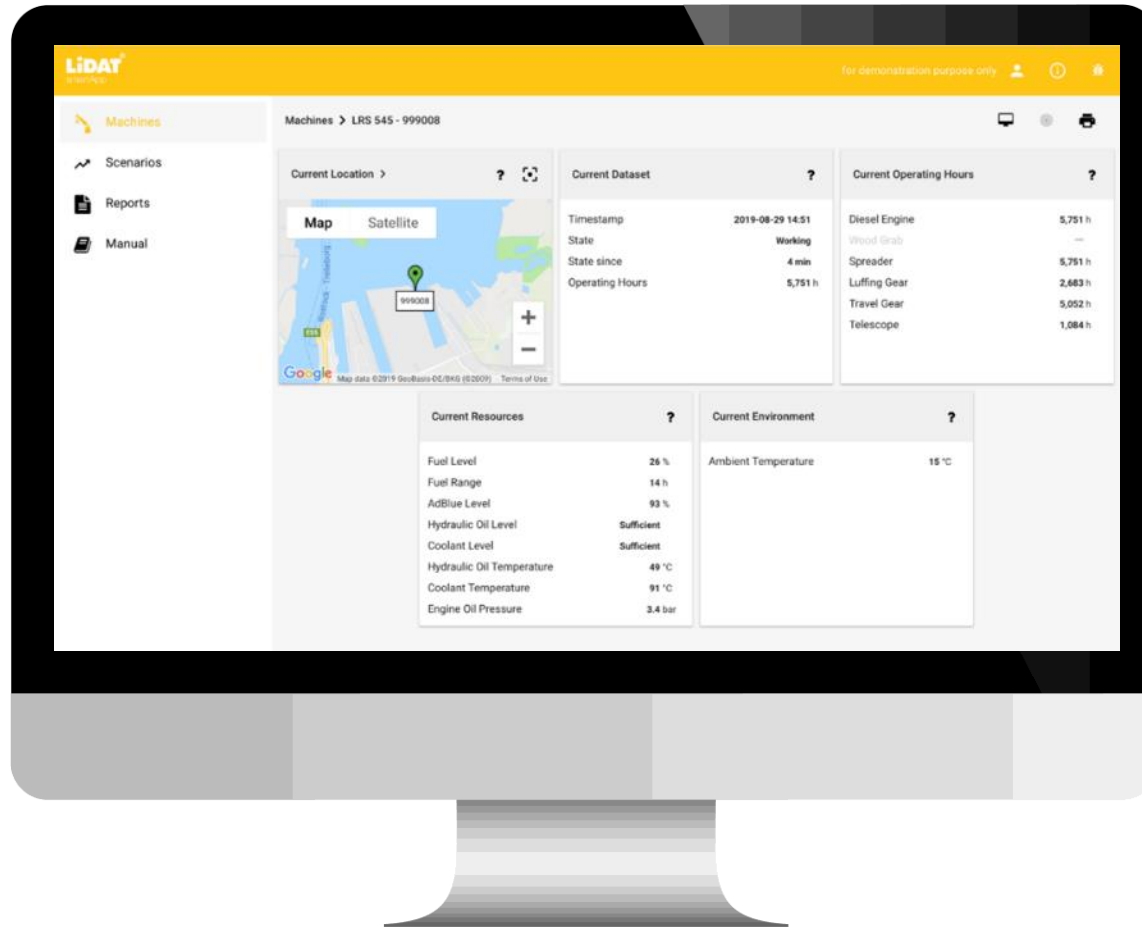
Information obtained directly from crane control system, rather than from external sensors



## Comparison

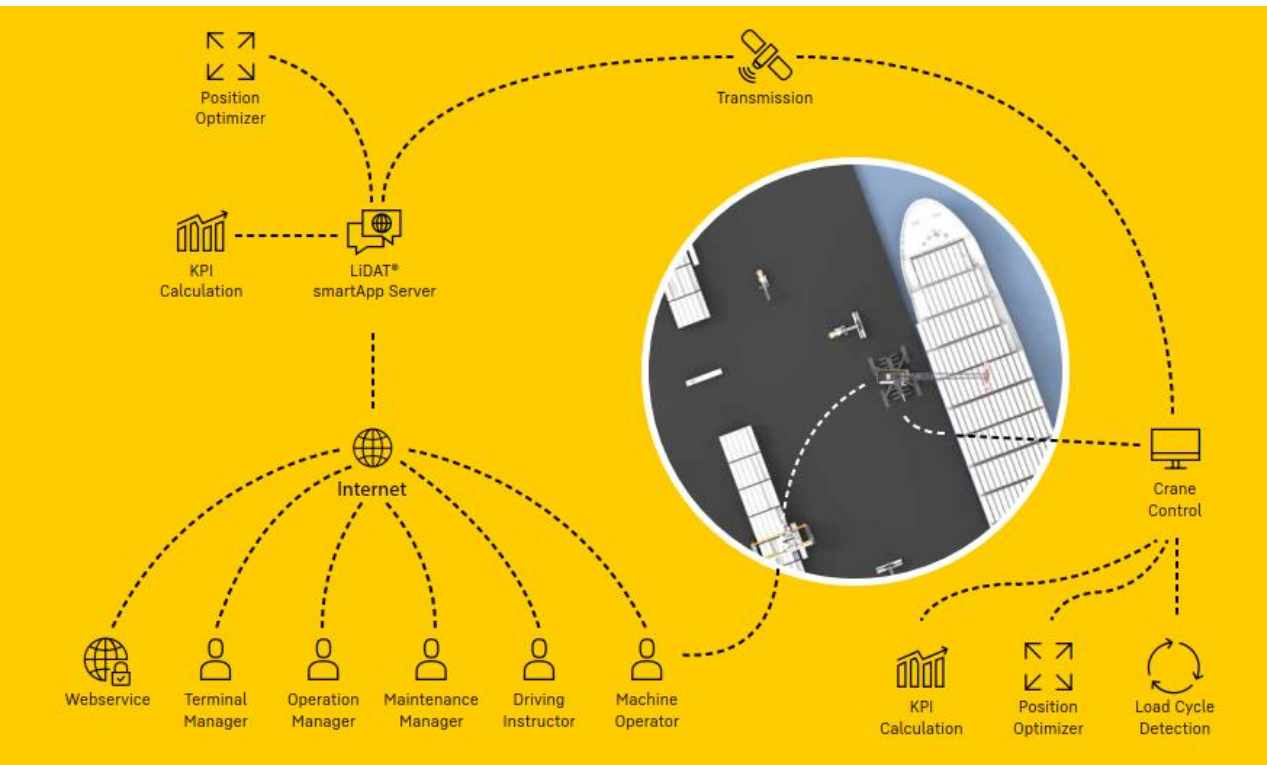
Direct comparison of multiple cranes during definable time periods

# What it is



- IT-solution for analysing and optimising cargo handling processes
- Makes the processes faster, more environmentally friendly and more cost effective
- Real-time overview of the equipment status and the progress
- The Optimization Package additionally recommends specific optimisation actions

# Technical description



- The relevant data transmitted to the LiDAT smartApp server
- Authorised users can access and download the processed data via LiDAT smartApp
- Liebherr handles the setup and support of the transmission link, hosts the data and maintains the software during the active user subscription

LiDAT® smartApp

## What it is







LiDAT® smartApp

## Benefits

- Increased turnover efficiency
- Cost saving
- Eco-friendliness
- Increased resale value
- Good process and machine overview

**LIEBHERR**





The new crane

## Unplugged LHM

- Up to **2 km travelling distance** with 260 kWh capacity
- Fully recharged battery within 10 to 12 hours
- Up to **10 years** battery lifetime
- Emergency operation possible

Zero emission traveling for grid connected cranes

**LIEBHERR**

**Thank  
you.**



**LIEBHERR**



Liebherr-MCCtec Rostock GmbH

## Contact

**Björn Henning**

Sales Manager

Mobile Harbour Cranes

Mobile: +49 160 9044 2928

[bjoern.henning@liebherr.com](mailto:bjoern.henning@liebherr.com)

