



GAME CHANGER IN PORT OPERATIONS AND MANAGEMENT

Mediterranean Port and Logistics - Trieste
29TH MAY 2024

INDUSTRIAL
PORT
OPERATOR

**More than
25.000
employee**



- Established in 1963 as Garip YILDIRIM and Sons Co.
- 5 Subholdings under the YILDIRIM Holding umbrella
- Headquarters are located in Istanbul, Türkiye

YILPORT HOLDING as
a subsidiary of
YILDIRIM GROUP
benefits of global well-
diversified industrial
knowledge and
experience

YILDIRIM Group

Industrial conglomerate with a growing global footprint



	%	Selected Subsidiaries	
Metals & Mining	%31		<ul style="list-style-type: none">Engaged in the exploration, mining, and processing of chrome ore and high-carbon ferrochrome in 5 countries (Türkiye, Kazakhstan, Albania, Sweden, CIS). With the recent acquisition of Elementis Chromium, the Group also added a chromium chemicals business to its portfolio. The group is also planning to expand its global network to Africa and Latin America besides its current presence.#3 player in the global chromium industry. Additionally, #2 highest quality HC FeCr producer.
Ports & Logistics	%24		<ul style="list-style-type: none">International port and terminal operator with activities in 12 countries with 24 marine ports and 7 dry terminals - fastest growing player in the world.Ranked #12 globally in Drewry Global Container Terminal Operators Report – #1 in Turkey.The target is to be among the top global 10 players by 2030.
Fertilizers & Chemicals	%14		<ul style="list-style-type: none">Largest producer and exporter of calcium ammonium nitrate (CAN) fertilizers and ammonia in Türkiye, Netherlands, Belgium, Croatia#3 trader of fertilizers and chemicals (CAN, AN, DAP, AS, NPK, Urea) in Türkiye.
Financial Investments	%31		<ul style="list-style-type: none">Established in the Netherlands in 2010, YILDIRIM Asset Management serves as an investment arm of the group with a flexible mandate.Investments include CMA CGM (#3 container shipping company globally, had USD 74.5 bn revenue, USD 33.3 bn EBITDA in 2022).
Other			<ul style="list-style-type: none">Energy: 3 operational hydro-power plants (147.7 MW) and 2 greenfield power plant projects and 44 MW of installed solar in Türkiye with an additional 250 MW of solar projects in the pipeline.Shipping: Fleet of 19 dry bulk vessels & tankers.Real Estate: Real estate developer with projects of an Ottoman-era tannery and a shoe factory in Istanbul.
	Exits		<ul style="list-style-type: none">Sevenbridges was listed by MIT as "one of the 50 most innovative companies in the world in 2016". Making a \$50 million investment to Seven Bridges Genomics, a healthcare technology company, YILDIRIM Holding made the biggest investment of the year.MidUral is a vertically integrated chemical and metallurgical group of companies, and YILDIRIM Group acquired 49% shares in MidUral Group as a financial investor in 2018. <p><i>Both investments yielding a high economic return have reached the point where exit plans can be implemented.</i></p>

YILPORT Holding

The Fastest Growing International Container Terminal Operator (Following Drewry 2022)



Decarbonisation in Ports Industry

The ports play an important role in the decarbonisation of the economy.

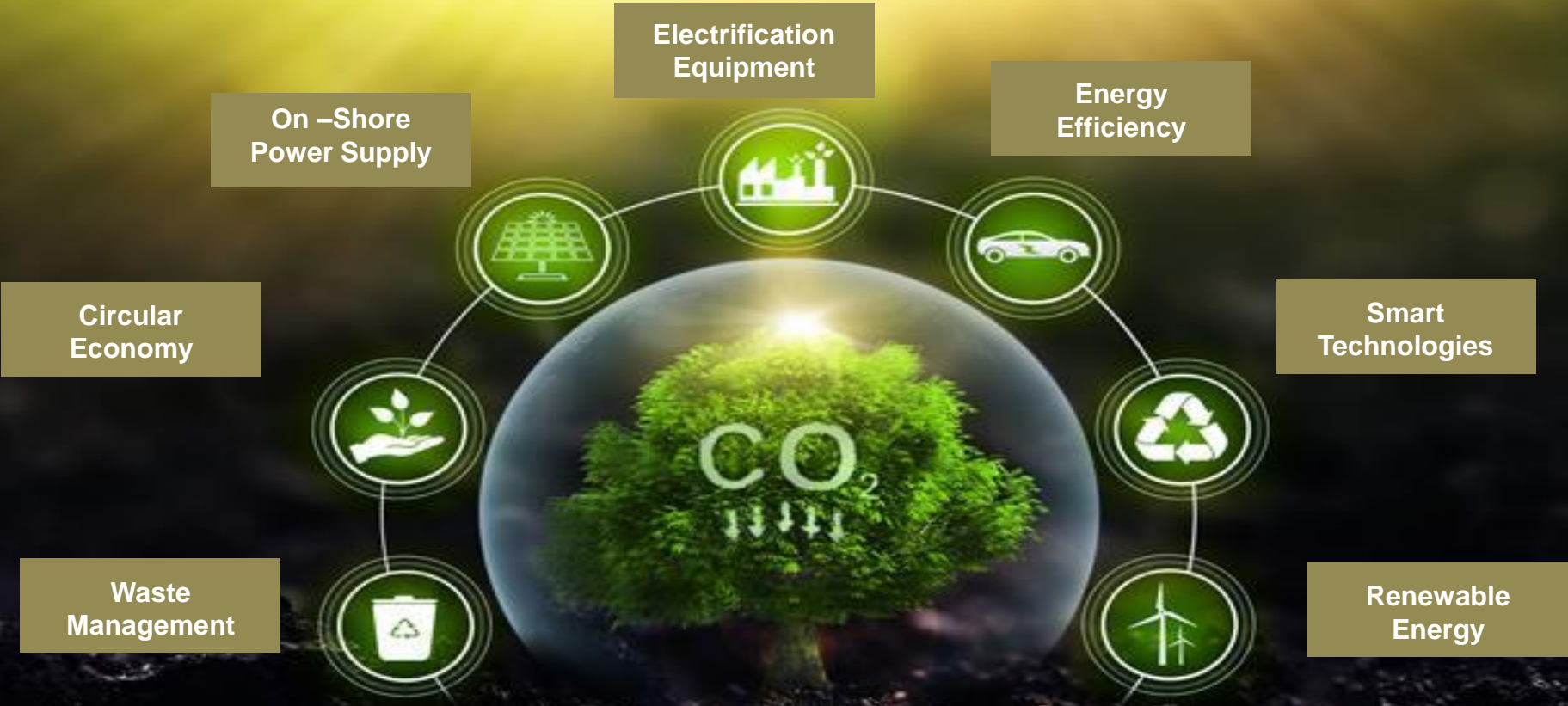
As a point of intersection between the land and the sea, the port could become the catalyst of this change.

Due to the complex, multifaceted nature of ports, a coordinated strategy between port authorities and all stakeholders within ports will be vital to maximise the uptake of carbon-neutral technologies.

Decarbonisation will continue to be one of the top priority in the maritime industry. At YILPORT, we aim to continue our activities with this awareness, and we strive with all our strength to fulfil our responsibility.



YILPORT's Decarbonisation Strategy

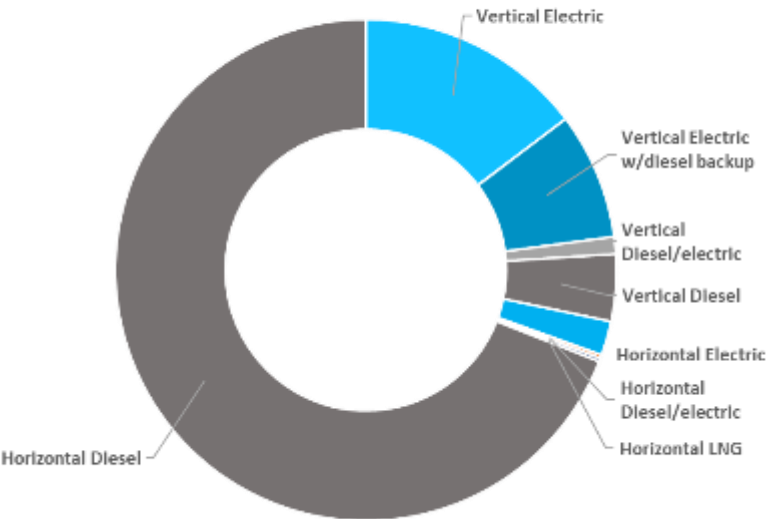


Even though the road towards decarbonisation and energy efficiency in the port sector is full of challenges, Yilport Holding will remain focused on striving to meet our goals through our decarbonisation roadmap and strategy.

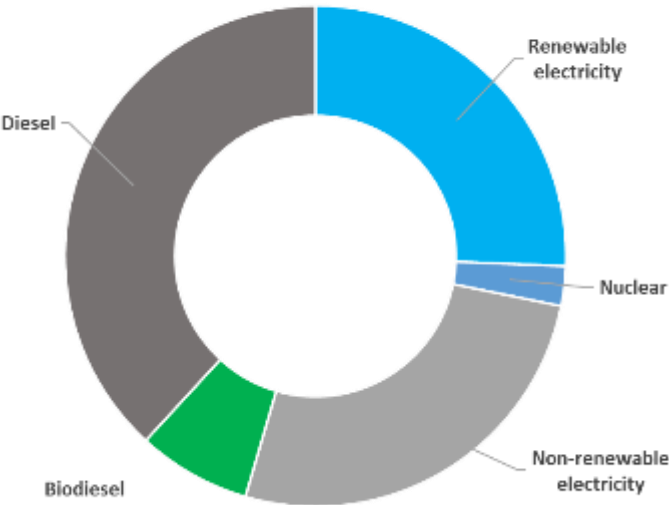
YILPORT Net Zero



YILPORT Equipment Profile
Count of equipment, excludes contractors



YILPORT Energy Profile
MWh consumed 2022



Equipment

- Vertical equipment is 81% electric-powered
- Horizontal equipment is only 3%, mainly forklifts

Energy

- Electricity is 47% renewable, 6% nuclear
- Fuel is 16% renewable (biodiesel)

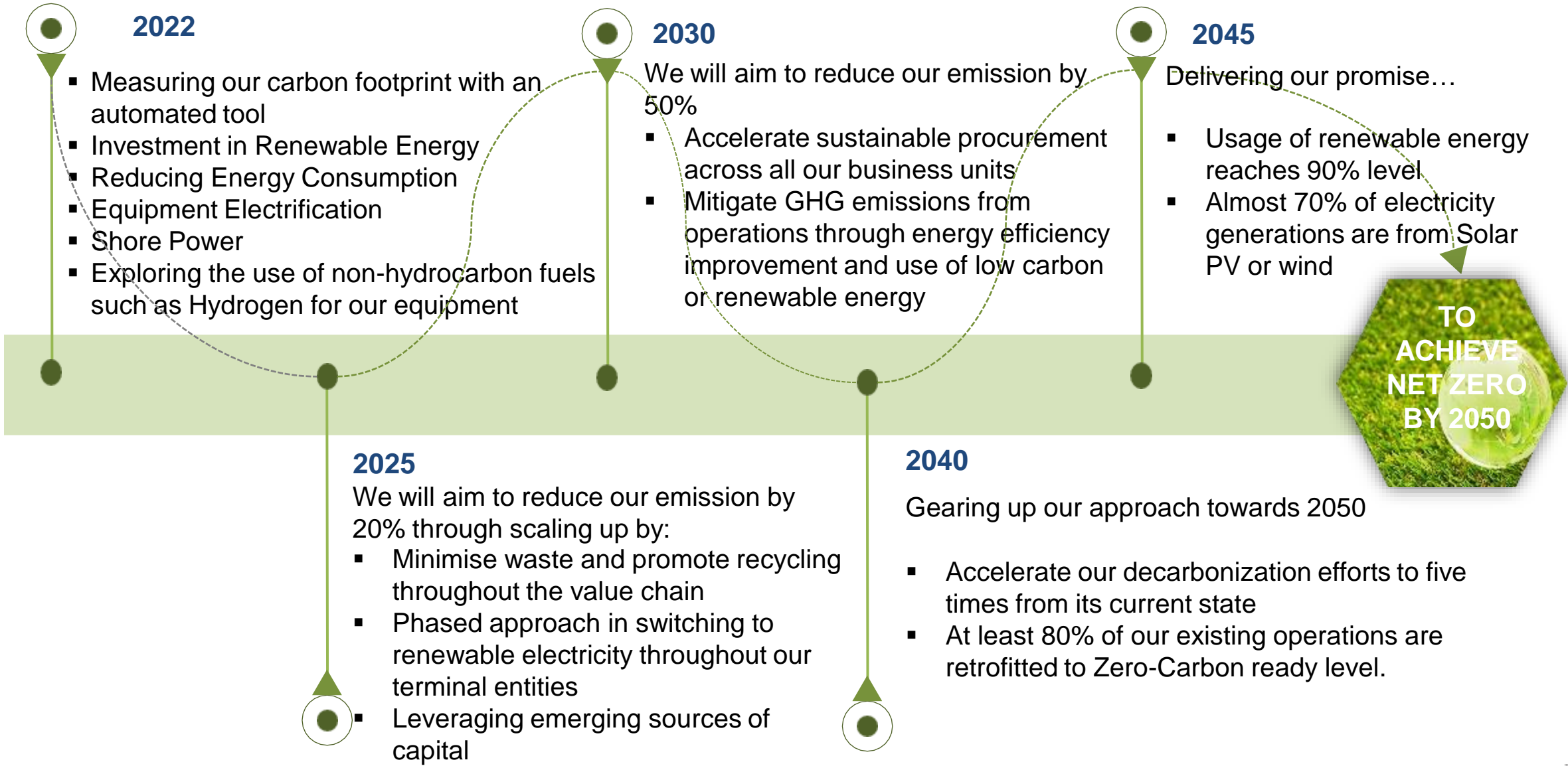
Decarbonization

- Eventual electrification of horizontal transport when it is sensible and practical (post 2027)

Green Port concept

- On-shore power as and when required by law
- Other criteria including ISO certification
- Working with FEPORT and Drewry on rating systems

Yilport Commitment Towards Net Zero by 2050



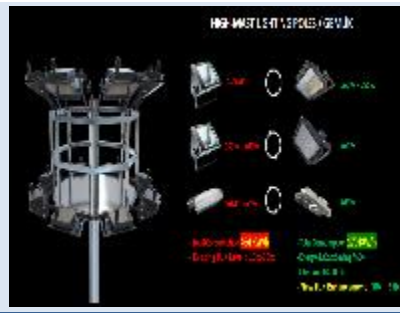
Sustainability Initiatives Across All Yilport Terminal Globally



- Electrified RTG, Mobile Harbour Cranes
- Environmentally-Friendly STS, Reach Stackers, Empty Container Handlers
- New Tier 5 Terminal Tractors

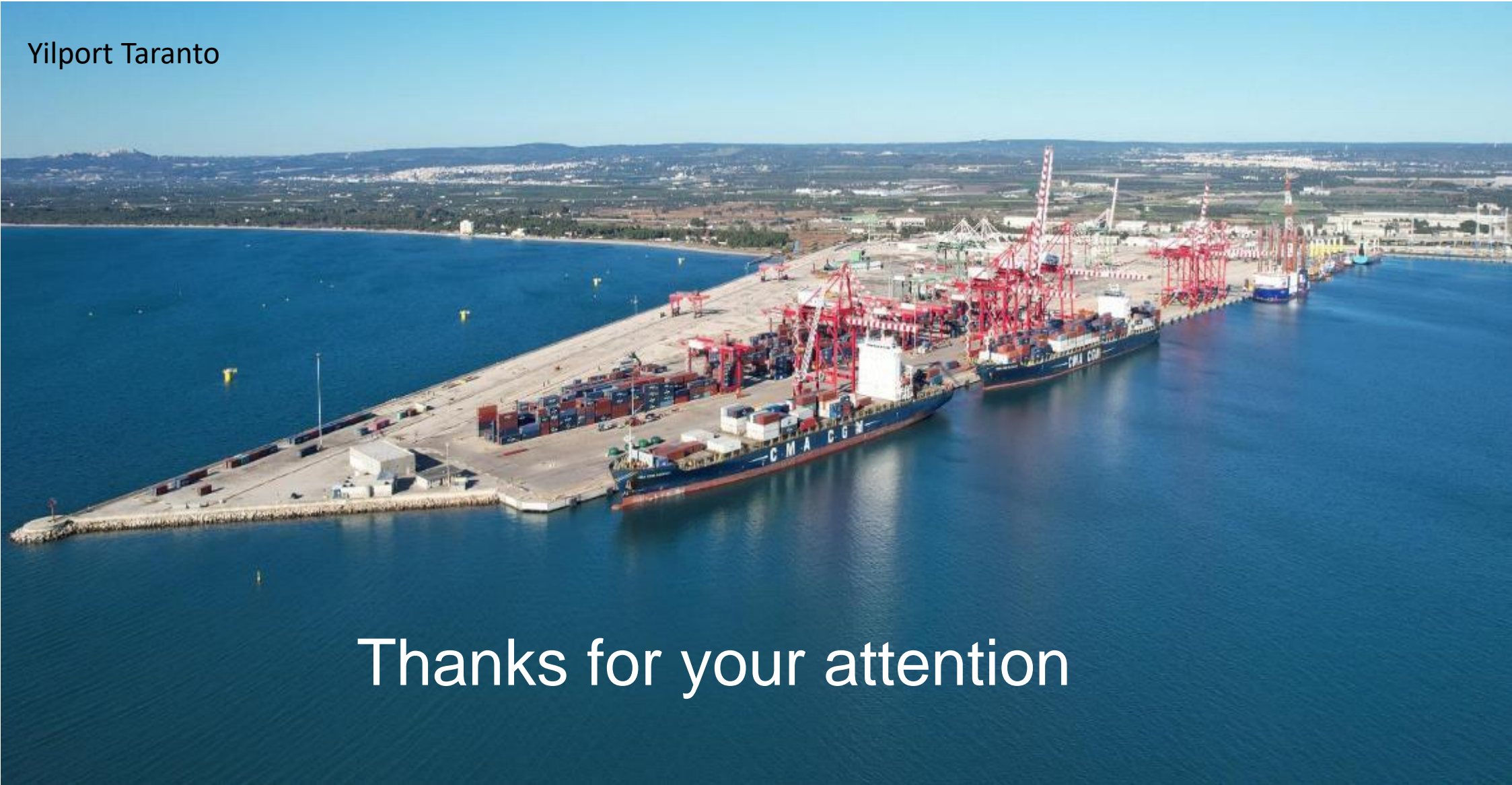


- Solar Powered Terminal Building equipped with EV Car chargers
- Certified Use of 100% Renewable Electricity supplies in YP Oslo



- New Waste Management Plants
- Latest Technology Fire Detector Equipment
- LED Lighting Mast

Yilport Taranto



Thanks for your attention

Autorizzazione dell'iniziativa Due ruote e una sella a sostegno dell'Istituto Giannina Gaslini tramite Gaslininsieme

Genova, 13/05/2024

La Fondazione Gaslininsieme ETS autorizza l'iniziativa Due ruote e una sella, organizzato da Massimiliano Milo, volta a raccogliere fondi per l'Istituto Giannina Gaslini tramite questa Fondazione. Entro l'esclusivo ambito della stessa iniziativa, con le modalità che seguono o che comunque verranno precisamente concordate, viene autorizzato l'utilizzo del logo dedicato (che si trasmette in allegato) e la dicitura "a sostegno del Gaslini tramite Gaslininsieme".

- In caso di utilizzo del logo su locandine o materiale promo-pubblicitario e/o informativo con diffusione attraverso i propri canali social, supporti analogici e/o digitali, è necessario inviarci, per preventiva approvazione, l'anteprima delle bozze delle varie forme e dei vari supporti di comunicazione previsti.
- Per eventuali articoli, interviste o comunicati stampa è richiesta una specifica autorizzazione preventiva.
- Se la raccolta fondi deriva da forme di vendita di prodotti e/o servizi (gadget, biglietti d'ingresso a spettacoli, etc...) viene richiesto di specificare sempre la quota eventualmente destinata alla Fondazione. (p.es: il x% del ricavato di Motoraduno Giulio Enante 2024 verrà destinato alla Fondazione Gaslininsieme ETS).

Le somme destinate a Gaslininsieme dovranno essere versate tramite bonifico bancario:

intestato a: Fondazione Gaslininsieme ETS

IBAN: IT40V0333201400000000965984

Causale: donazione iniziativa due ruote e una sella per Accoglienza

Vi ringraziamo per la vostra generosità.

Con molti cordiali saluti.

Fondazione Gaslininsieme ETS

A sostegno di
GASLININSIEME
per l'Ospedale dei bambini



IBAN: IT40V0333201400000000965984
<https://www.gaslininsieme.org>